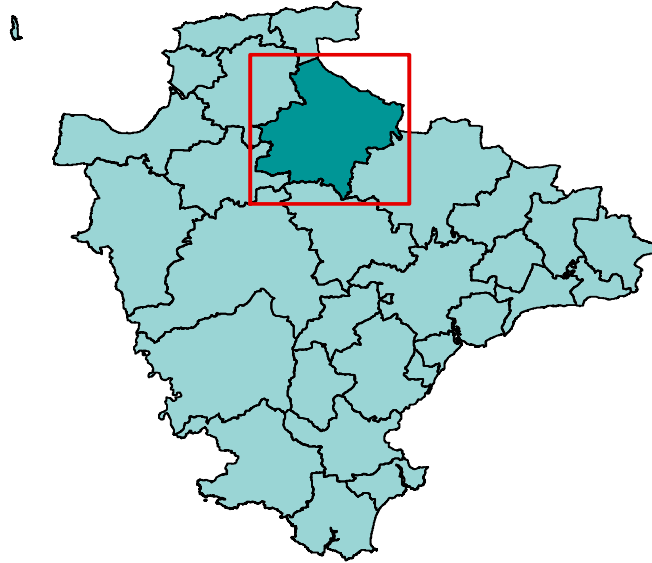


Area definition

This profile, one of 29 covering the area of Devon County Council, has been generated by Strategic Intelligence with the aim of contributing to. It provides a statistical overview, based on a series of facts and figures, of what life is like in the area.

The profile is structured around a series of themes to cover social, economic and environmental well being. It is part of a suite of documents that provide information about the area and the people living there. Further information is available on the Devon County Council website (<http://www.devon.gov.uk/devontownprofiles>).

Each area is built up from parishes with one or more population centres and the remaining rural hinterland. Further information about the creation of the Devon Town geography can be found at the end end of this report.



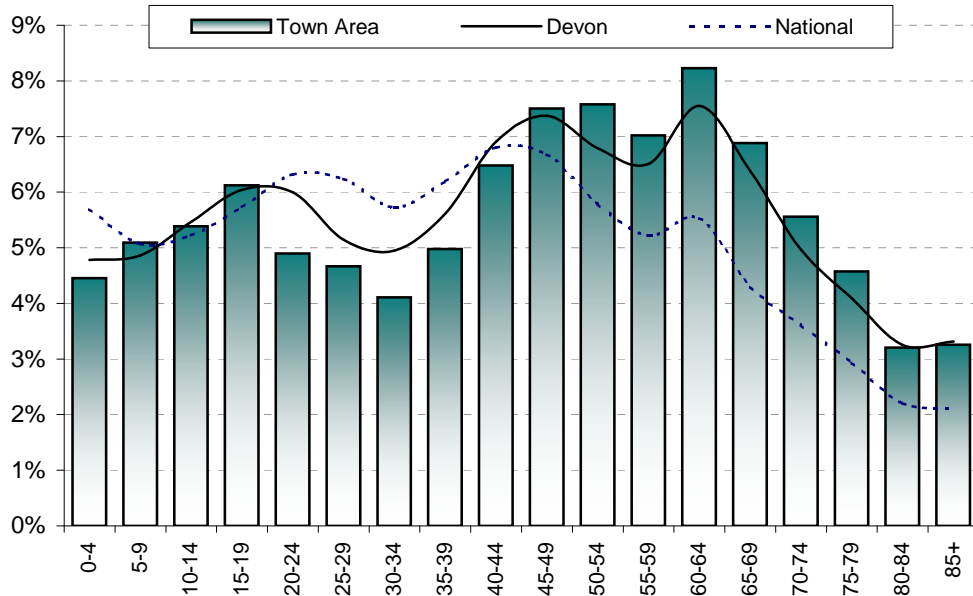
© Crown copyright. All rights reserved. 100019783 2011

The area has one major settlement - South Molton. It also includes the following parishes: Bishop's Nympton, Brayford, Burrington, Chittlehamholt, Chittlehampton, Chulmleigh, East Anstey, East Worlington, Filleigh, George Nympton, King's Nympton, Knowstone, Mariansleigh, Meshaw, Molland, North Molton, Queen's Nympton, Romansleigh, Rose Ash, Satterleigh and Warleigh, Twitchen and West Anstey.

Population

Total population	South Molton	Remainder	Town Area	North Devon	Devon	National
2001	4,095	7,965	12,060	87,508	704,497	57,103,927
2011 (National 2010)	5,126	8,476	13,602	97,415	772,374	60,462,600
Change	1,031	511	1,542	9,907	67,877	3,358,673
% change	25.2%	6.4%	12.8%	11.3%	9.6%	5.9%

Proportion aged	South Molton	Remainder	Town Area	North Devon	Devon	National
0-19	22.3%	20.3%	21.1%	22.0%	21.2%	21.7%
20-39	23.1%	15.9%	18.7%	21.1%	21.7%	24.5%
40-59	25.7%	30.3%	28.6%	27.8%	27.6%	24.5%
60-79	21.1%	27.7%	25.2%	23.0%	23.0%	16.4%
80 and over	7.8%	5.7%	6.5%	6.1%	6.6%	4.3%

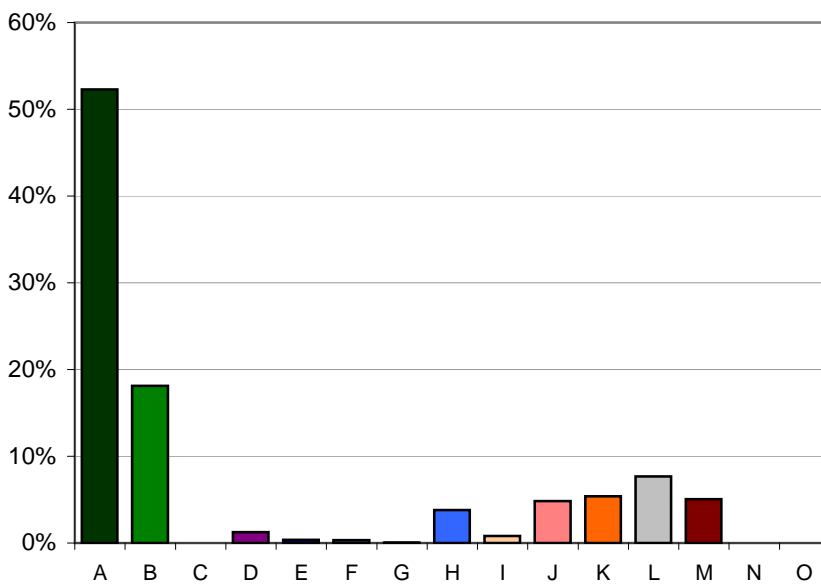


Population attributes

Information about the people that live in the area is taken from Experian's Mosaic data. Mosaic is based on the assumption that people living in an area are likely to be similar; however, it does not provide definitive description of each person.

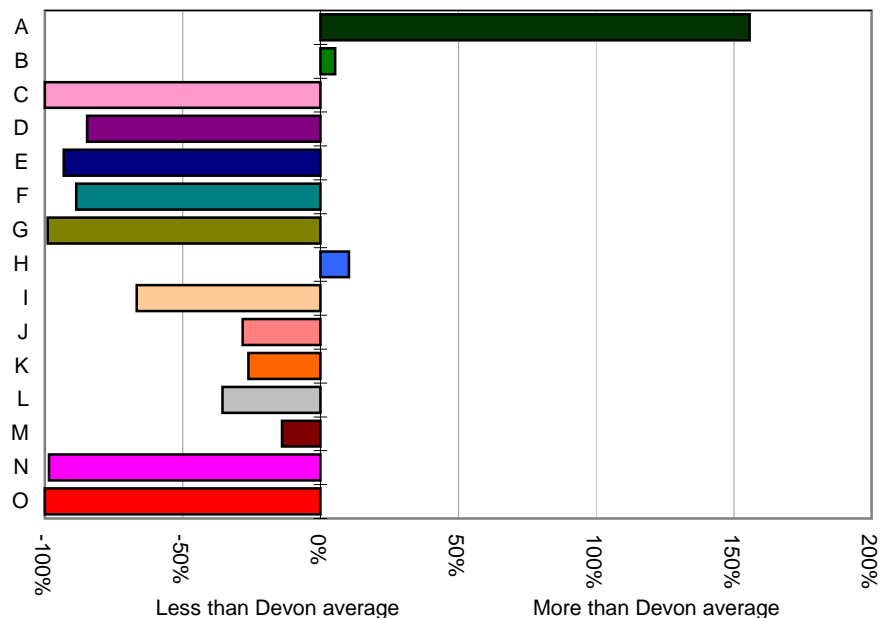
The Mosaic data are broken down in to a number of groups, each one describing a section of the population.

	Households	%	Devon
A -Residents of isolated rural communities	3,090	52.3%	20.5%
B -Residents of small and mid-sized towns with strong local roots	1,071	18.1%	17.2%
C -Wealthy people living in the most sought after neighbourhoods	0	0.0%	0.9%
D -Successful professionals living in suburban or semi-rural homes	75	1.3%	8.3%
E -Middle income families living in moderate suburban semis	22	0.4%	5.4%
F -Couples with young children in comfortable modern housing	19	0.3%	2.8%
G -Young, well-educated city dwellers	3	0.1%	4.9%
H -Couples and young singles in small modern starter homes	225	3.8%	3.5%
I - Lower income workers in urban terraces in often diverse areas	47	0.8%	2.4%
J -Owner occupiers in older-style housing in ex-industrial areas	285	4.8%	6.7%
K -Residents with sufficient incomes in right-to-buy social houses	319	5.4%	7.3%
L -Active elderly people living in pleasant retirement locations	453	7.7%	11.9%
M -Elderly people reliant on state support	298	5.0%	5.9%
N -Young people renting flats in high density social housing	1	0.0%	1.1%
O -Families in low-rise social housing with high levels of benefit	0	0.0%	1.3%



Distribution of households by Mosaic group

Proportion of households compared to Devon average



Deprivation - 2010

The principal source of deprivation data is currently The Indices of Deprivation 2010. This is a Lower Super Output Area (LSOA) level measure of deprivation. There are over 32,000 LSOAs in England, each one containing about 1,500 people. They were developed following the 2001 Census. The index comprises seven domains: income, employment, health & disability, education & training, barriers to housing & services, the living environment and crime. These are combined to give an overall indication of deprivation.

Population living in deprived areas

Population within most deprived 25% of all areas in England	0
% population within most deprived 25% of all areas in England	0%
Population within least deprived 25% of all areas in England	0
% population within least deprived 25% of all areas in England	0%

Deprivation data are not available for wards but the following tables show which wards contain the most deprived LSOA in the Town Area

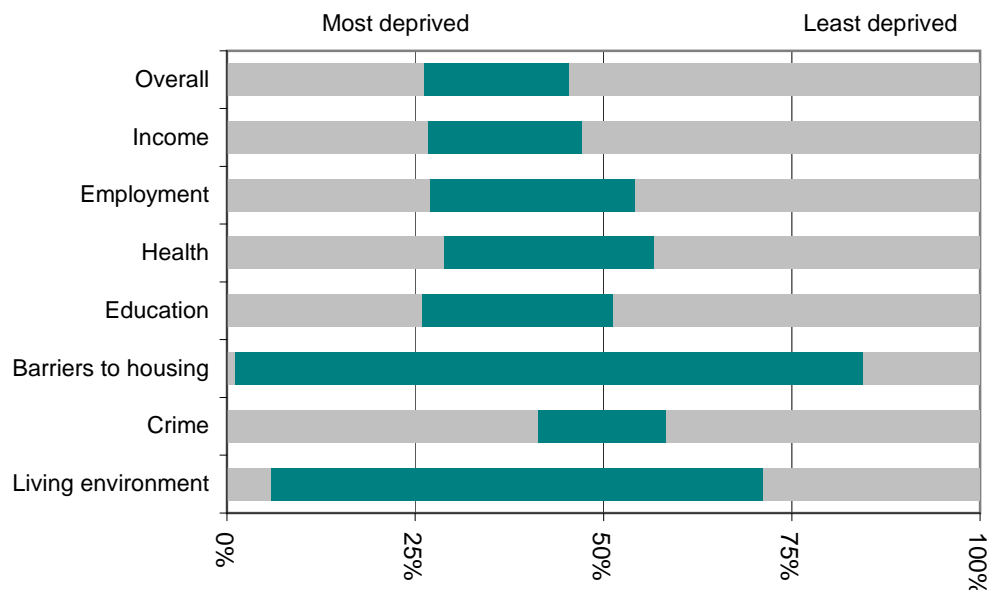
Most deprived areas

Overall	Bishop's Nympton
Income Deprivation	South Molton
Employment Deprivation	Bishop's Nympton
Health Deprivation and Disability	South Molton
Education, Skills and Training Deprivation	South Molton
Barriers to Housing and Services	North Molton
Living Environment Deprivation	North Molton
Crime	South Molton

Least deprived areas

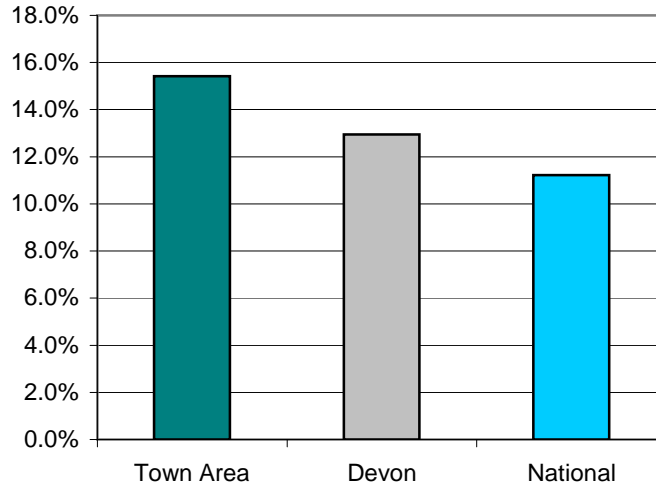
Overall	South Molton
Income Deprivation	Chittlehampton
Employment Deprivation	Chittlehampton
Health Deprivation and Disability	Chittlehampton
Education, Skills and Training Deprivation	Chulmleigh
Barriers to Housing and Services	South Molton
Living Environment Deprivation	South Molton
Crime	Chittlehampton

This graph shows the range of deprivation in the South Molton Town Area. The larger the green bar the more variation there is within the area.



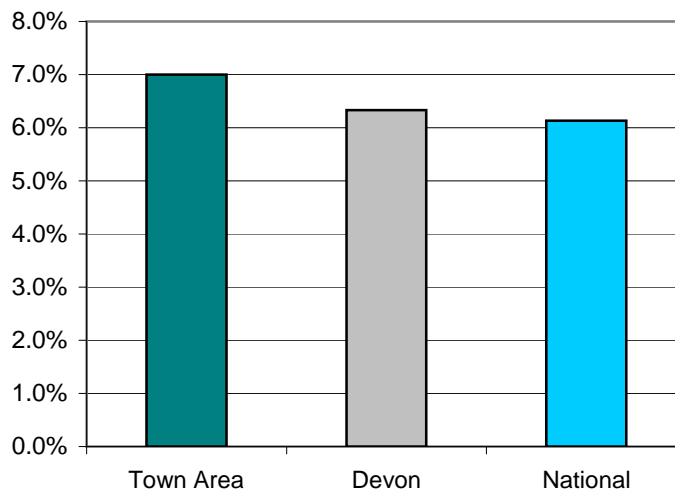
Children Living In Poverty - 2011

	<i>South Molton</i>	<i>Remainder</i>	<i>Town Area</i>	<i>North Devon</i>	<i>Devon</i>	<i>National</i>
Percentage of children living in poverty	11.4%	17.8%	15.4%	12.4%	12.9%	11.2%



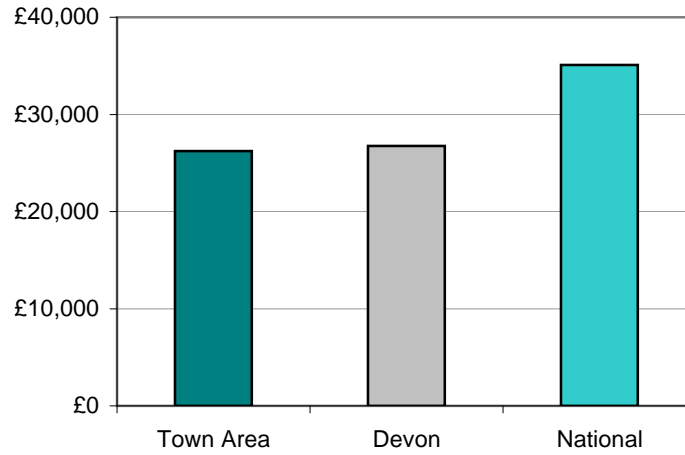
Percentage of Fuel Poverty Households - 2008

	<i>South Molton</i>	<i>Remainder</i>	<i>Town Area</i>	<i>North Devon</i>	<i>Devon</i>	<i>National</i>
Percentage of fuel poverty households	6.5%	7.2%	7.0%	6.6%	6.3%	6.1%



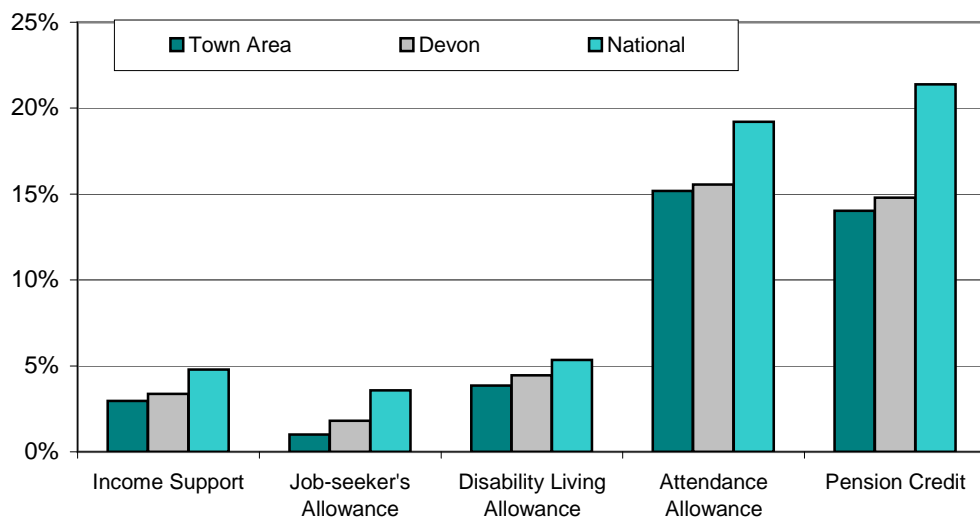
Income - 2008

	<i>South Molton</i>	<i>Remainder</i>	<i>Town Area</i>	<i>North Devon</i>	<i>Devon</i>	<i>National</i>
Average income (£)	25,200	26,900	26,200	26,000	26,800	35,100



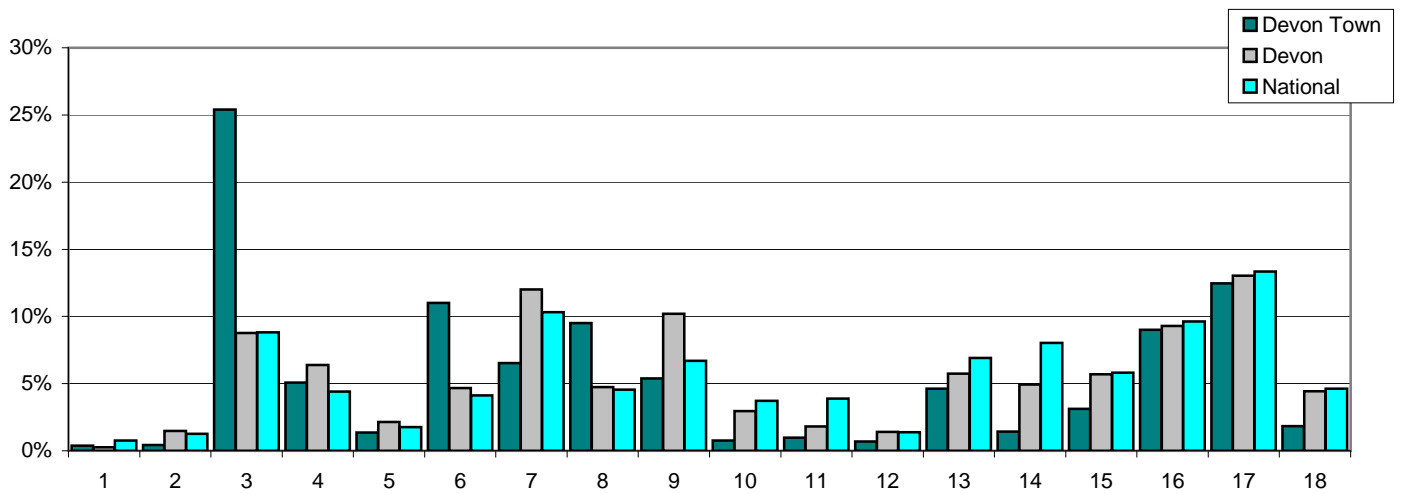
Benefits - 2011

Percent of:	<i>South Molton</i>	<i>Remainder</i>	<i>Town Area</i>	<i>North Devon</i>	<i>Devon</i>	<i>National</i>
16-59 year olds claiming Income Support	4.7%	1.9%	3.0%	3.9%	3.4%	4.8%
16-64 year olds claiming Job Seekers Allowance	1.6%	0.7%	1.0%	1.6%	1.8%	3.6%
Total population claiming Disability Living Allowance	5.1%	3.1%	3.9%	4.7%	4.5%	5.3%
65 and older claiming Attendance Allowance	22.7%	11.0%	15.2%	15.4%	15.6%	19.2%
60 and older claiming Pension Credit	19.9%	11.0%	14.0%	16.9%	14.8%	21.4%



Employment - 2010

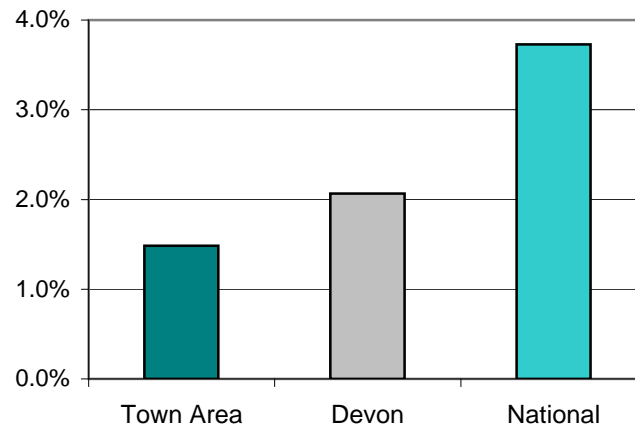
Percent of all employees	South Molton	Remainder	Town Area	North Devon	Devon	National
1 Agriculture, forestry & fishing	0.1%	1.1%	0.4%	0.1%	0.3%	0.8%
2 Mining, quarrying & utilities	0.2%	1.2%	0.4%	0.8%	1.5%	1.3%
3 Manufacturing	29.8%	13.1%	25.4%	13.5%	8.8%	8.8%
4 Construction	4.5%	6.6%	5.1%	3.9%	6.4%	4.4%
5 Motor trades	1.3%	1.4%	1.4%	2.0%	2.1%	1.8%
6 Wholesale	12.6%	6.5%	11.0%	4.7%	4.7%	4.1%
7 Retail	7.1%	5.1%	6.5%	13.6%	12.0%	10.3%
8 Transport & storage (inc postal)	10.4%	7.2%	9.5%	3.5%	4.7%	4.6%
9 Accommodation & food services	4.4%	8.2%	5.4%	15.0%	10.2%	6.7%
10 Information & comms	0.4%	1.8%	0.8%	1.2%	3.0%	3.7%
11 Financial & insurance	1.1%	0.5%	1.0%	1.1%	1.8%	3.9%
12 Property	0.7%	0.7%	0.7%	0.7%	1.4%	1.4%
13 Professional, scientific & technical	4.9%	3.9%	4.6%	3.7%	5.7%	6.9%
14 Business administration & support services	1.0%	2.5%	1.4%	3.7%	4.9%	8.0%
15 Public administration & defence	3.5%	2.0%	3.1%	4.0%	5.7%	5.8%
16 Education	5.5%	18.8%	9.0%	9.5%	9.3%	9.6%
17 Health	10.5%	18.0%	12.5%	15.3%	13.0%	13.3%
18 Arts, entertainment, recreation & other services	2.0%	1.4%	1.8%	3.6%	4.4%	4.6%



Note: This table does not include self-employed businesses which can result in low figures especially in the Agriculture, Forestry & Fishing classification.

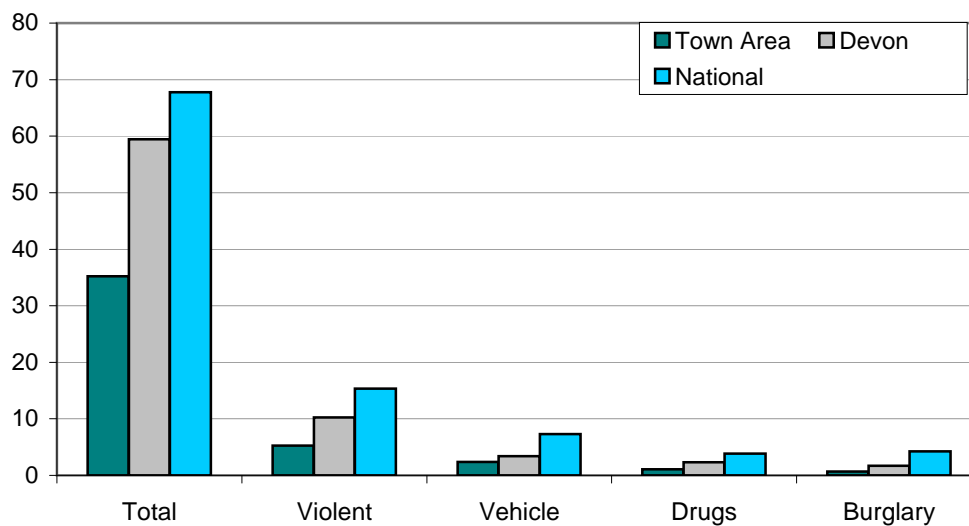
Unemployment - 2011

	<i>South Molton</i>	<i>Remainder</i>	<i>Town Area</i>	<i>North Devon</i>	<i>Devon</i>	<i>National</i>
Number unemployed	55	79	134	1,155	9,451	1,461,644
% of working age population	2.0%	1.3%	1.5%	2.2%	2.2%	4.0%



Crime - April 2010 - March 2011

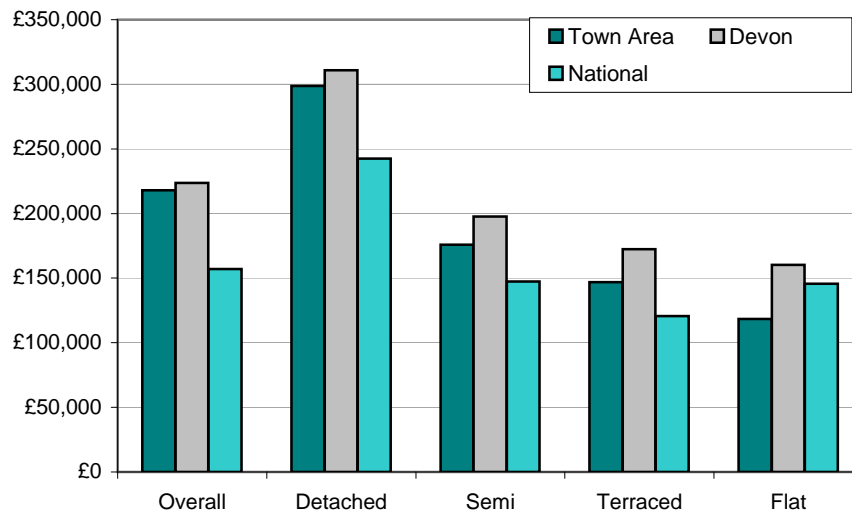
Crimes per 1,000 population	<i>South Molton</i>	<i>Remainder</i>	<i>Town Area</i>	<i>North Devon</i>	<i>Devon</i>	<i>National</i>
Total crime	47.6	27.7	35.2	68.8	59.5	67.8
Violent crime	10.1	2.4	5.3	13.3	10.3	15.4
Vehicle crime	1.6	2.8	2.4	3.2	3.4	7.3
Drug offences	1.4	0.9	1.1	3.2	2.3	3.8
House burglary	0.2	0.9	0.7	1.6	1.7	4.2



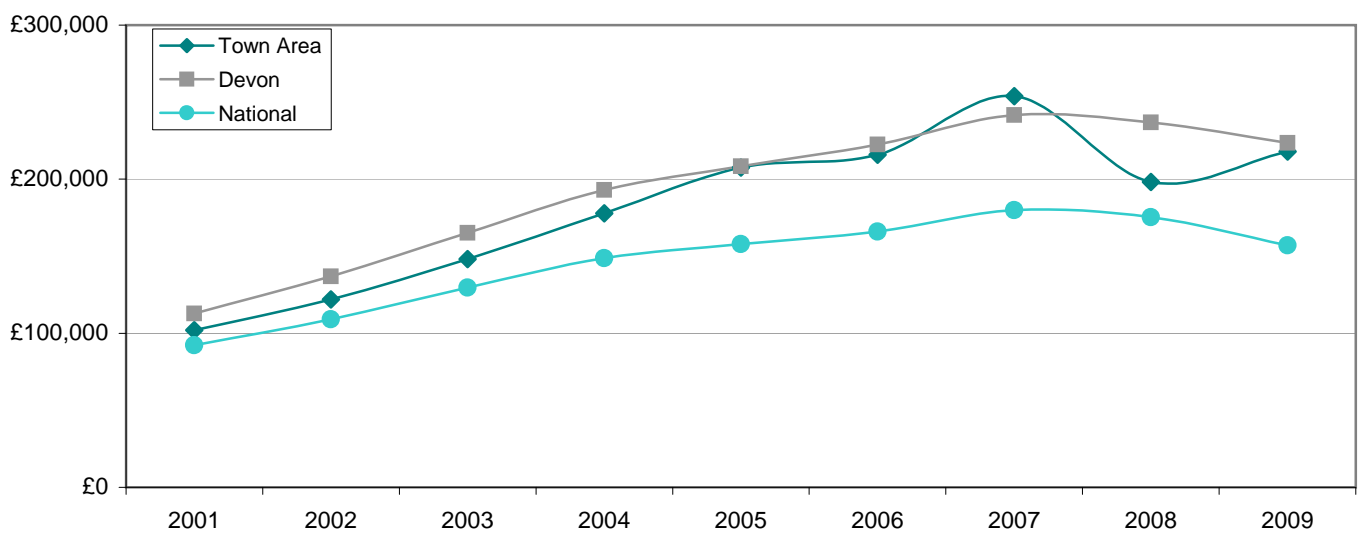
Note: Vehicle Crime Includes: Interfering with a motor vehicle

House prices - 2009

Average prices (£)	South Molton	Remainder	Town Area	North Devon	Devon	National
Overall	164,814	261,999	217,934	209,460	223,645	157,033
Detached	235,310	324,971	298,819	285,301	310,899	242,492
Semi-detached	193,071	168,184	175,758	187,493	197,577	147,464
Terraced	130,689	185,024	146,990	158,442	172,313	120,663
Flat/Maisonette	83,167	153,667	118,417	164,651	160,202	145,635



Overall average price (£)	2001	2002	2003	2004	2005	2006	2007	2008	2009
South Molton	102,012	121,994	148,079	177,789	207,563	215,779	253,887	198,188	217,934
Devon	112,813	136,969	165,264	193,056	208,323	222,478	241,523	236,770	223,645
England & Wales	92,183	108,982	129,632	148,744	157,880	166,063	179,905	175,434	157,033



Place Survey - 2008

The 2008 Place Survey provides information on people's perceptions of their local area and the local services they receive. The survey collects information on 18 national indicators for local government, used to measure local government performance for 152 county councils, metropolitan district councils, London boroughs and unitary authorities.

Further information can be found on the Department for Communities and Local Government's website: www.communities.gov.uk

Figures are the proportion of people responding to the survey who live in the South Molton Town Area.

What things are most important in making somewhere a good place to live?

51%	Health services
41%	The level of crime
38%	Affordable decent housing
31%	Public transport
28%	Access to nature

What things most need improving in this area?

38%	Public transport
37%	Road and pavement repairs
37%	Activities for teenagers
36%	Affordable decent housing
29%	Job prospects

People saying they are very satisfied or fairly satisfied with	Town Area	Devon
Their local area as a place to live	89%	89%
Their local council	43%	52%
Their county council	38%	45%

Education - June 2011

South Molton
Remainder
Town Area
North Devon
Devon
National

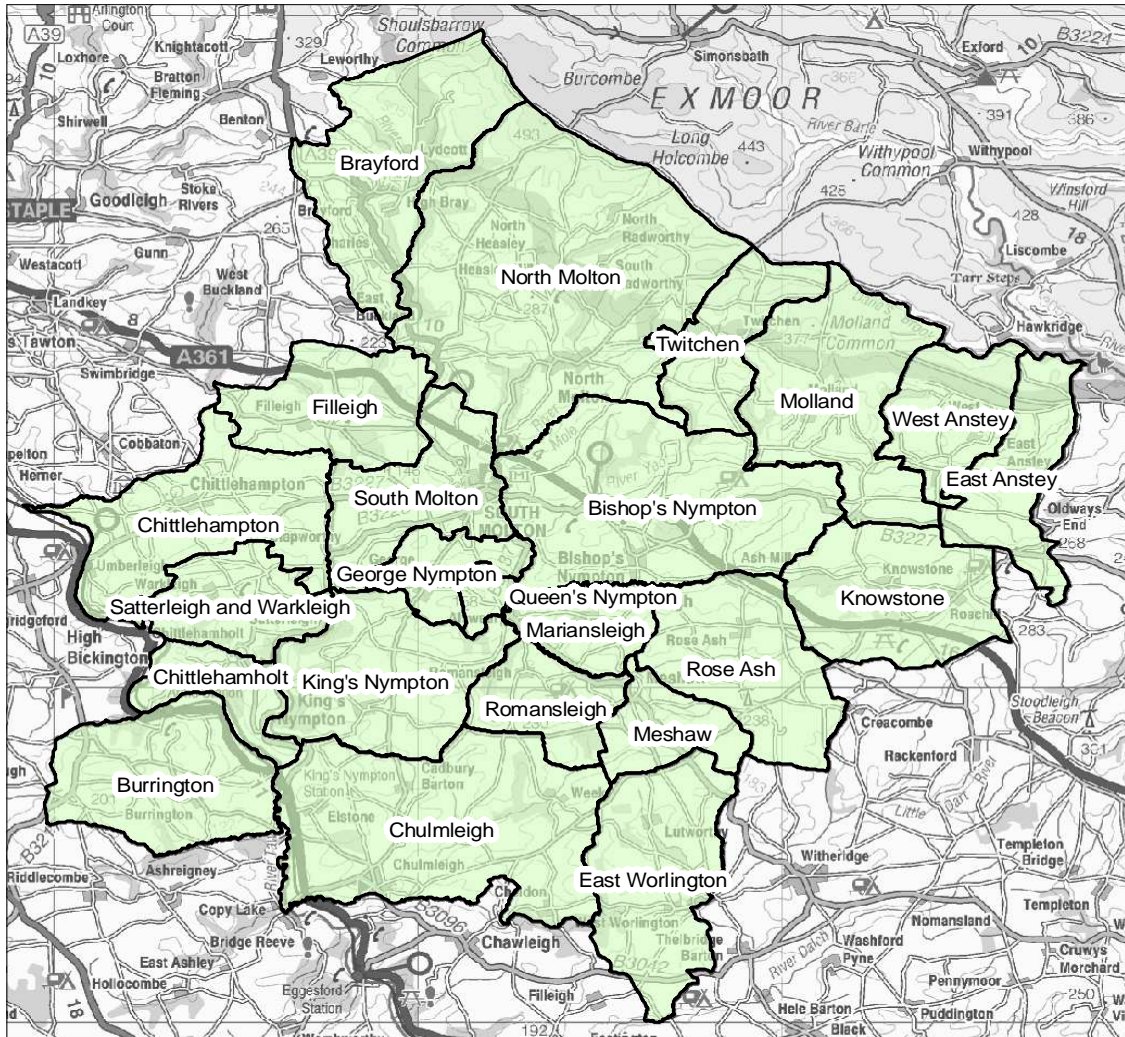
% children achieving Key Stage 2 level 4 or above in

English	77%	91%	86%	85%	85%	81%
Maths	86%	89%	88%	83%	84%	82%
Science	77%	91%	100%	87%	87%	85%

% children achieving 5 or more GCSEs at grades

A*-C	72%	81%	76%	67%	74%	80%
A*-C including	56%	68%	62%	52%	58%	59%
A*-G	106%	94%	97%	95%	96%	n/a

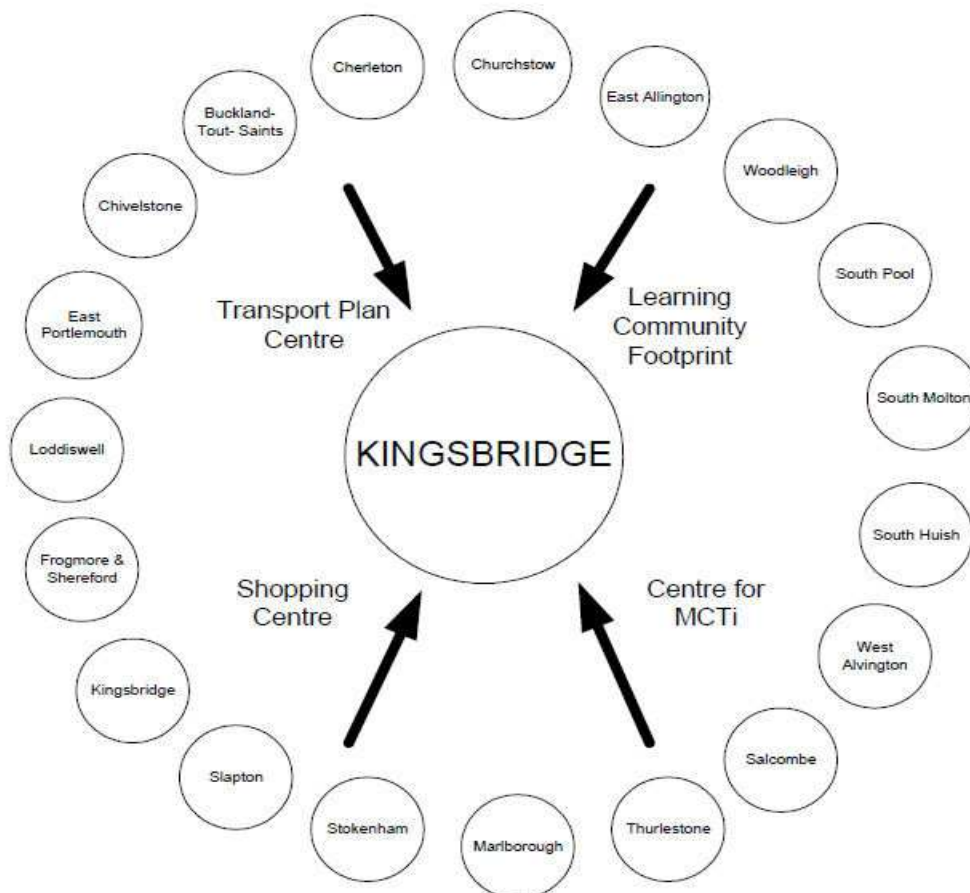
South Molton area



Identifying Devon Towns

The main factor that decides a town's hinterland is provision of services; the place that the hinterland looks to in order to provide the things it needs to survive. In order to identify the 28 Devon Towns, analysis of the following services and other relevant factors have been taken into account:

- Local Travel Plans – which are based on public consultation and map local travel patterns, the majority of which are short ones in and around local communities as part of people's daily lives.
- Shopping catchment areas – which are the service most frequently accessed by people.
- Learning Community catchment areas – which have a major influence on where people look to for services. Learning Community catchments do not always follow district or even county boundaries, but are based on a collection of feeder primary schools.
- Market and Coastal Towns Initiative areas - The Market and Coastal Towns Initiative was started after recognition that the health of a market town is vital to the well being of its hinterland, and that many of Devon's market towns were in need of regeneration. It was a Central Government initiative, administered by the RDAs. Over half of Devon was included in the Market and Coastal Towns Initiative.
- Parishes - The boundary definitions are shown in terms of parishes, as they are traditionally the smallest area used for 'clustering'. The diagram below is an illustration of how this works for one Devon Town: Kingsbridge.



Exeter also provides a similar or related "market town" function as well as being a sub regional centre with a larger sphere of influence.

Further information and sources

Population : 2001 - Census © Crown copyright
2011 - Patient and Practitioner Services Agency, national figures from mid-2010 estimate

Population attributes : Mosaic Public Sector 2010 © Experian

Deprivation : Indices of Deprivation 2010
Department for Communities and Local Government
© Crown copyright
<http://www.communities.gov.uk/indices>

Children Living in Poverty : Child Poverty Unit 2011
<http://endchildpoverty.org.uk/>

Fuel Poverty Households : Fuel Poverty Indicator 2008
<http://www.fuelpovertyindicator.org.uk/>

Income : Estimates based on Experian's Mosaic Household dataset 2008
© Experian

Benefits : May 2011 - Department for Work and Pensions
© Crown copyright
<http://research.dwp.gov.uk/asd/tabtool.asp>

Employment : Business Register and Employment Survey/Annual Business Inquiry 2010
Office for National Statistics © Crown copyright
<http://www.nomisweb.co.uk>

Unemployment : April 2011 - Office for National Statistics
© Crown copyright
<http://www.nomisweb.co.uk>

Crime : April 2010 - March 2011
Devon and Cornwall Constabulary

Education : June 2011 - Children and Young People's Directorate
Devon County Council
Local figures relate to children living in an area and attending a Devon County Council

House prices : Land Registry 2009
© Crown copyright
National figures relates to England and Wales. Overall national house price is weighted by number of sales in each month. National house prices by type are simple averages of monthly averages - this figure may be skewed if there were a large number of sales in a

Place Survey : Department for Communities and Local Government 2008
© Crown copyright
<http://www.communities.gov.uk/publications/localgovernment/newplacesurvey>