

9 Passing side roads

- When riding along the road, be aware that drivers often come out of side roads without giving way to cyclists
- As soon as possible, look into each side road to check for traffic
- Are drivers indicating left or right? Have they seen you?

Be ready to slow down, stop or turn to avoid being hit, should a vehicle pull out in front of you.

10 Turning left

- Approach junctions steadily and with care, looking out for traffic
- Give a left arm signal if you need to inform other road users that you are changing direction
- When turning keep a safe distance away from the kerb and watch out for pedestrians and vehicles
- If you are turning left into a major road, in particular watch for traffic approaching from your right. Wait until traffic has passed and stop if your view is blocked by parked vehicles



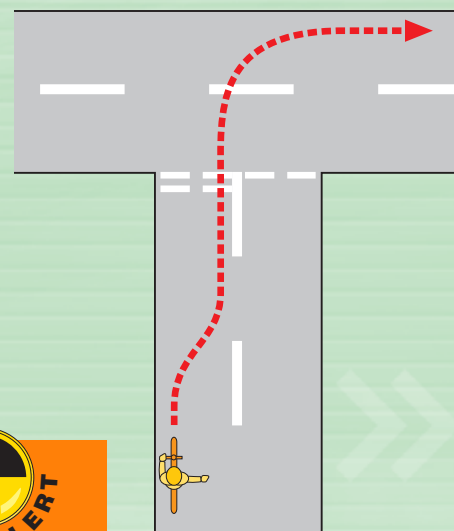
11 Turning right from a minor road into a major road

Extreme care is needed when you turn right. Your turn will consist of two phases:

- Moving to the centre of a minor road**
- Crossing the major road**
- Always look behind you before you attempt to change direction on the approach to a junction
- Give a clear right arm signal before you change road position and maintain it as you move to the centre of the road

On narrow single track roads with no markings, give a right arm signal but keep to the left on your approach to the junction

- You must stop at a 'Stop' sign. You should also stop at "Give Way" signs unless the road you are entering is clear
- Watch out for parked vehicles and for traffic which may turn right with you and cut across your path. Also for pedestrians who may step off the kerb
- Only turn when all traffic on a major road has passed and you have judged that it is safe to do so



Always use the safer alternative if you are unsure about turning right (see over).



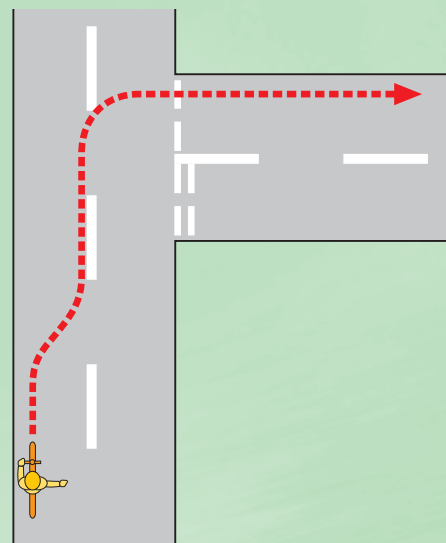
Turning right from a major road into a minor road

Extreme care is needed when turning right.

Your turn will consist of two phases:

- **Moving to the centre of the major road**
- **Crossing the traffic approaching you on the major road**

- Always look behind before moving to the centre of the road
- If the road is too busy, keep to the left and use the safer 'alternative method' of turning
- If you decide to turn right on your bike, give a clear right arm signal and keep signalling until you reach the centre of the road
- Wait opposite the road you want to use until you have judged that it is safe to turn
- When all traffic has passed, turn into the minor road, but look out for pedestrians who may step off the kerb in front of you

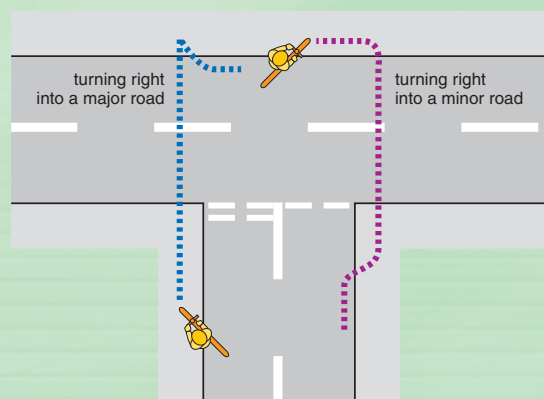


'The alternative method' - a safer way of turning right

You may decide that the roads are too busy to attempt to turn right on your bike. There may be problems in taking a central line to the junction and vehicles behind you may be too close.

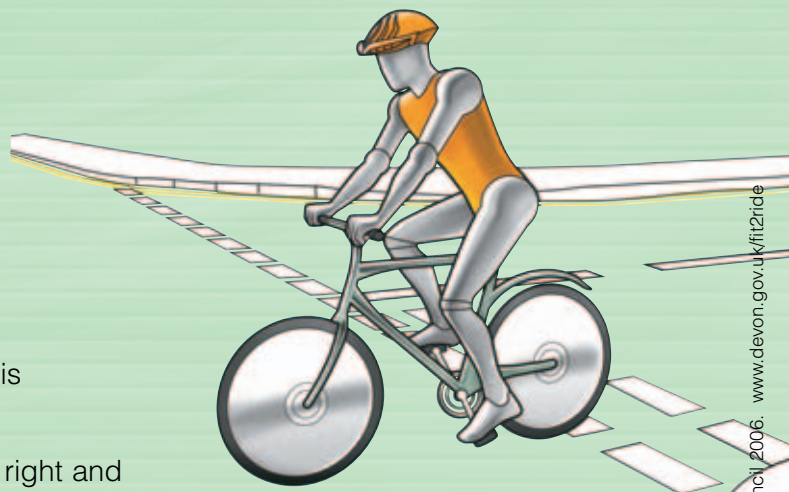
If you feel at risk, cycling a right turn:

Wheel your bicycle across the road when it is safe to do so.



12 Cycling across a major road

- Look over your right shoulder to check for traffic conditions
- Is traffic signalling?
- Keep to the left. There is no need to signal as you are in the correct position
- You must stop at a 'Stop' sign
- Stop at a "Give Way" sign, unless the road is clear of traffic/pedestrians
- Look for traffic ahead and from the left and right and when it is safe move across the major road with care



Devon's rural lanes may not have road markings, so take care!

