

## Contents

### Chapter 1 Introduction 7

- 1.1 Main Objective 7
- 1.2 Background 7
- 1.3 Public Rights of Way and Access in Devon 8
- 1.4 How the Rights of Way Improvement Plan was Developed 10

### Chapter 2 The Strategic Context 13

- Introduction 13
- 2.1 The Devon County Council Structure Plan 2001 - 2016 13
- 2.2 The Devon County Council Strategic Plan 2003-2008 14
- 2.3 The Devon Local Transport Plan 2006-2011 14
- 2.4 Devon County Council Role and Action Programmes 15
- 2.5 Devon County Council Transport Asset Management Plan 15
- 2.6 National Park Management Plans 15
- 2.7 Area of Outstanding Natural Beauty Management Plans 16
- 2.8 Community Strategy for Devon 16

### Chapter 3 Implementation and Review 17

- Introduction 17
- 3.1 Implementation Resources and Priorities 17
- 3.2 Review 18

### Chapter 4 Statement of Objectives, Policies and Actions 19

- Introduction 19
- 4.1 Management of the Access Network 20
  - 4.1A Legal - Definitive Map and Statement 21
  - 4.1B Legal - Public Path Orders 24
  - 4.1C Maintenance 26
  - 4.1D Signing and Waymarking 28
  - 4.1E Information and Communication 30
  - 4.1F Road Safety 32
  - 4.1G Planning 34
  - 4.1H Access Land 36
  - 4.1I Permissive Access 38

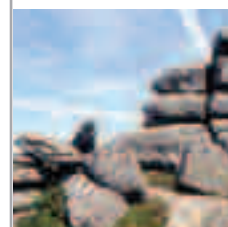
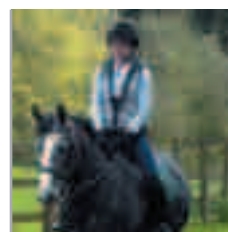


4.2	Provision for Users	39
4.2A	Users with Limited Mobility	39
4.2B	Walkers	41
4.2C	Horse-Riders and Carriage-Drivers	43
4.2D	Cyclists	45
4.2E	Motorised Users	48
4.2F	Dog Walkers	50
4.3	The Wider Context	52
4.3A	Environment	52
4.3B	Tourism and Economic Development	55
4.3C	Health	57
4.3D	Agriculture	59
4.3E	Partnerships	61

## Dartmoor National Park

63

1.	Introduction	65
1.1	Dartmoor National Park Authority	65
1.2	Existing Access Provision	65
1.3	Use of Existing Access Provision	66
2.	The Dartmoor National Park Context	67
2.1	Statutory Purposes	67
2.2	Policy Context	67
2.3	Dartmoor Local Access Forum	70
3.	Structure of the Dartmoor National Park Chapter	70
4.	Assessment of the Network to Provide Opportunities for Recreation and to Meet the Needs of Different Classes of User	71
4.1	Walkers	71
4.2	Horse-Riders	72
4.3	Cyclists	73
4.4	Carriage-Drivers	74
4.5	Motorised Users	74
4.6	Proposed Actions	75
5.	Assessment of the Accessibility of the Network to People with Restricted Mobility and People with Sensory Impairments	77
5.1	Proposed actions	78
6.	Other Issues	79
6.1	Maintenance	79
6.2	Information	79
6.3	Support for Landowners	80
6.4	Heritage and Nature Conservation	80
7.	Conclusion	80
8.	Summary of Actions and Links to DLTP 2006-2011 Objectives	81





<b>Exmoor National Park</b>	<b>85</b>
1. Introduction	87
2. Existing Access Provision	87
2.1 Existing Rights of Way	87
2.2 Permitted Access	87
2.3 Common Land	88
2.4 Open Access	88
2.5 National and Regional Routes	89
2.6 Access to the National Park	90
3. Existing Use of the Public Rights of Way Network	90
3.1 Recreation	90
3.2 Tourism	91
3.3 Local Use	91
4. Context	92
4.1 Statutory Duties	92
4.2 The Sandford Principle	92
4.3 Existing Management Plan Strategy/Objectives	92
4.4 Exmoor Local Access Forum Vision	95
5. Previous Consultations	96
6. Structure of Plan Chapter	96
6.1 Expected Outcomes	96
6.2 Limitations	97
7. Assessment of the Ability of the Network to Provide Opportunities for Recreation and Meet the Needs of Users	97
7.1 Walking	97
7.2 Cycling	98
7.3 Horse Riding	99
7.4 Carriage Drivers	100
7.5 Motorised Users	101
7.6 People with Restricted Mobility and Sensory Impairments	102
8. Other Issues	103
8.1 Maintenance	103
8.2 Signage and Waymarking	106
8.3 Changes to the Network	106
8.4 Social Inclusion	107
8.5 Tourism	107
8.6 Public Information	108
8.7 Nature Conservation	109
8.8 Heritage Conservation & Landscape Character	109
8.9 Contingency Planning	110
8.10 Planning	110
8.11 Landowners/Managers	111
9. Summary of Action for Improvements	112
Annex 1 Summary of Consultation Responses on Rights of Way Management 2000/01 & 2004	117

<b>Glossary</b>	<b>121</b>
-----------------	------------