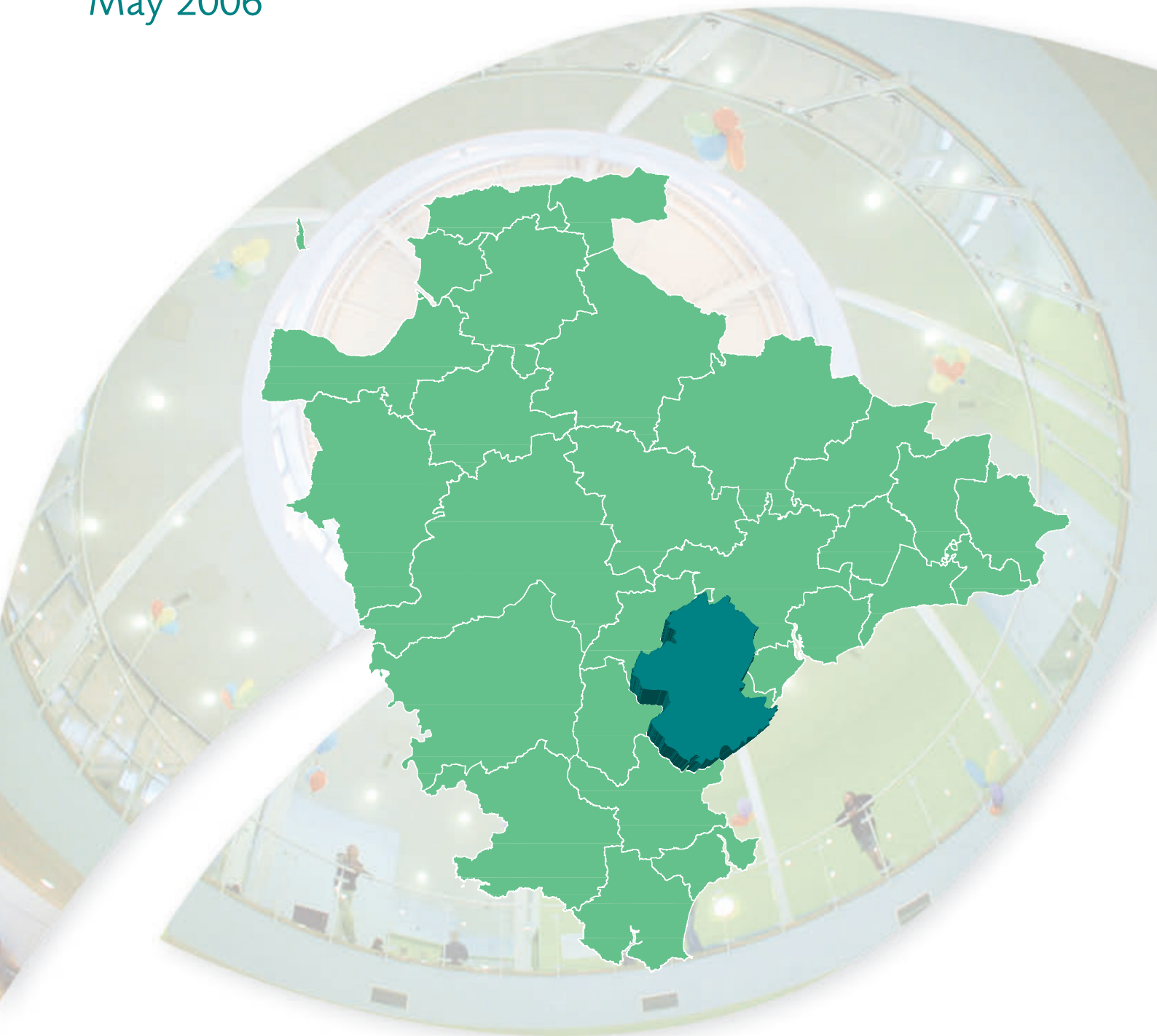


Newton Abbot and Kingsteignton Devon Town Baseline Profile

May 2006

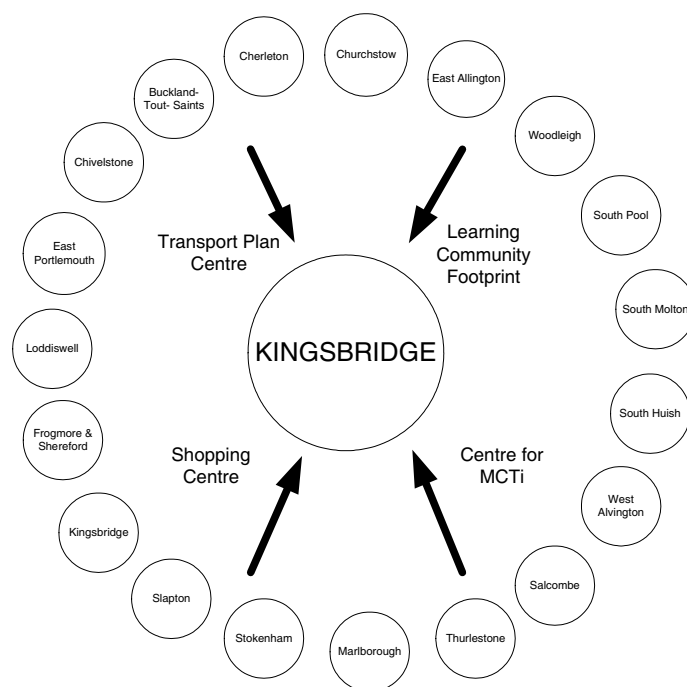


Identifying Devon Towns

The main factor that decides a town's hinterland is provision of services; the place that the hinterland looks to in order to provide the things it needs to survive. In order to identify the 28 Devon Towns, analysis of the following services and other relevant factors have been taken into account:

- Local Travel Plans – which are based on public consultation and map local travel patterns, the majority of which are short ones in and around local communities as part of people's daily lives.
- Shopping catchment areas – which are the service most frequently accessed by people.
- Learning Community catchment areas – which have a major influence on where people look to for services. Learning Community catchments do not always follow district or even county boundaries, but are based on a collection of feeder primary schools.
- Market and Coastal Towns Initiative areas - The Market and Coastal Towns Initiative was started after recognition that the health of a market town is vital to the well being of its hinterland, and that many of Devon's market towns were in need of regeneration. It is a Central Government initiative, administered by the RDAs. Over half of Devon is included in the Market and Coastal Towns Initiative.
- Parishes - The boundary definitions are shown in terms of parishes, as they are traditionally the smallest area used for 'clustering'.

The diagram below is an illustration of how this works for one Devon Town: Kingsbridge.



Exeter also provides a similar or related "market town" function as well as being a sub regional centre with a larger sphere of influence.

Foreword

In Devon, we want a county for everyone.

We want all to share in our economic prosperity, to have access to the best possible public services and to enjoy a good quality of life.

Our county is made up of many small and scattered communities built around larger market and coastal towns and the vibrant city of Exeter.

To make sure that the County Council and other agencies provide a good service to all these diverse communities and can meet their future needs, we need to fully understand and take into account the local situation and any local issues.

We call this initiative “Connecting with Communities” and it is a key part of our Strategic Plan for the future of Devon.

To help, we have produced a local profile of each of the key market and coastal towns in Devon and their surrounding area.

Based on key facts and figures, these profiles are just a starting point for local discussion about the real needs and priorities of each of our communities.

I hope you find this information useful and that it proves an invaluable resource in all future local planning.

Councillor Des Hannon
Executive Support Member for Improvement and Customer Service
Devon County Council



Introduction

This profile, one of 29 covering the area of Devon County Council, has been generated by the County Council's Corporate Information Service and is an important resource contribution to local community planning work.

Each profile provides a statistical overview, based on a series of facts and figures, of what life is like in each "Devon town" area. The profile contains a baseline of information and is intended to provide the basis for further discussion and development within the County Council and with partners.

In light of these discussions the profile can grow into a more rounded picture describing "how things are" for each area, as well as to set out the likely future actions that will be needed to redress any gaps in service or unmet needs.

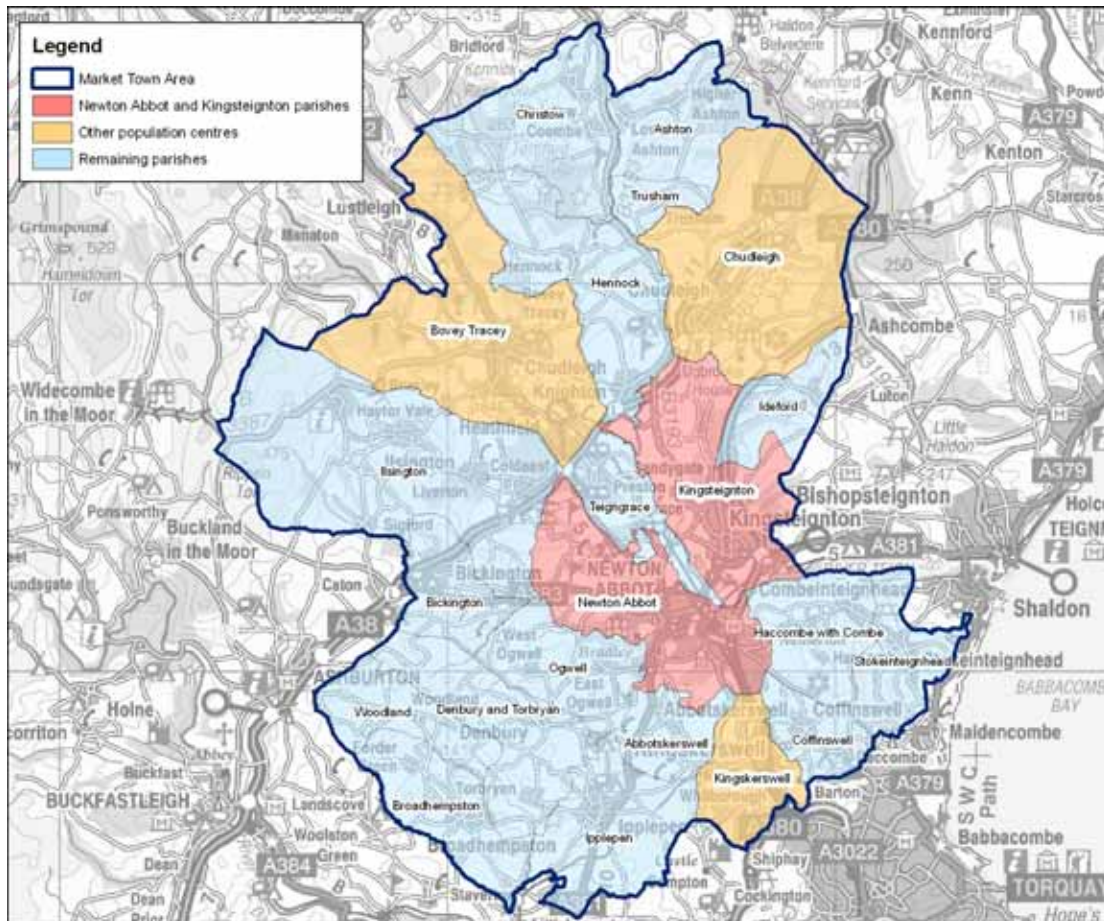
The profile is structured around a series of themes to cover social, economic and environmental well being. This is a starting point in producing profiles about our "Devon town" areas in which considerable effort has been made to provide a comprehensive series of data. Further data will be added to subsequent editions as they become available to provide a more complete picture and monitor trends.

The profiles are available on the County Council website – www.devon.gov.uk

Area Definition

Market town areas have been defined as aggregations of parishes. The following parishes make up the Newton Abbot and Kingsteignton area:

Abbotskerswell	Christow	Hennock	Newton Abbot	Woodland
Ashton	Chudleigh	Ideford	Ogwell	
Bickington	Coffinswell	Illesington	Stokeinteignhead	
Bovey Tracey	Denbury and Torbryan	Kingskerswell	Teigngrace	
Broadhempston	Hacombe with Combe	Kingsteignton	Trusham	



Crown Copyright. All rights reserved. Devon County Council. 100019783 2006

As much of the data included in this profile is produced at a ward level a ‘best-fit’ of wards is also used. Wards are included in one market town area if more than 60% of the population of that ward live within the market town boundary. If between 40% and 60% of a ward’s population falls within a market town area it will be included but may also be included in another area.

The wards that comprise the market town area in this profile are as follows:

Chudleigh	College	Bradley
Kingsteignton West	Buckland & Milber	Bovey
Kingsteignton East	Kerswell-with-combe	Teign Valley
Haytor	Ipplepen	
Bushell	Ambrook	

Eleven wards fall completely inside the market town boundary, with approximately 70% of the population of Bovey and Teign Valley wards living inside the boundary. As such both Bovey and Teign Valley wards will be included in the ‘best-fit’ for the purposes of this profile.

Each market town area is comprised of a centre (coloured red) and its surrounding hinterland (referred to as the ‘Remaining parishes’ throughout this document). The centres for this profile are considered to be the parishes of Newton Abbot and Kingsteignton, or the four wards (Bushell, Bradley, College, and Buckland & Milber) and the two Kingsteignton wards (Kingsteignton East and Kingsteignton West) if appropriate.

There are also three additional population centres – Bovey Tracey, Chudleigh and Kingskerwell – coloured orange. These are parishes where the 2001 Census showed a resident population that exceeded 3,000. The wards of Bovey, Chudleigh and Kerswell-with-Combe are used as a 'best-fit' where data are only available for wards.

Some national datasets are released using a new geographic hierarchy – Super Output Areas. The lowest level – Lower Super Output Areas (or LSOAs) – is about one third the size of a ward. These are aggregated to form Middle Super Output Areas (MSOAs). Where data are only available at Super Output Area a best-fit approach has been adopted. There are 46 LSOAs that fall either fully or partially inside the market town area, 13 of which form Newton Abbot parish and seven of which form a similar area to Kingsteignton. The other population centres within this profile are represented as follows: Five form an area similar to Bovey Tracey parish, three form Chudleigh parish and three form an area similar to Kingskerswell parish. There are ten MSOAs. Five form an area similar to Newton Abbot parish, and one forms a similar area to Kingskerswell parish. It is not possible to produce a reasonable fit for Kingsteignton, Chudleigh and Bovey Tracey.

Additional information has been included to provide some comparisons. All tables have data for the Teignbridge district and the area administered by Devon County Council – where reference is made to the county of Devon this refers to the area covered by Devon County Council, which does not include Plymouth or Torbay. Where possible data are also included at a national level, either for England or England & Wales.

Contents

Population	8
Percentage of population by age band (2004)	8
Population change (1991 to 2004)	9
Ethnicity (2001)	9
Household composition (2001)	9
Deprivation	10
Comparison of IMD 2000 and ID 2004	10
Map of Index of Deprivation (2004)	11
The Local Economy	12
Unemployment as a proportion of working age resident population (April 2005)	12
Economic activity (2001)	13
Income Support and Job Seekers Allowance claim rates (2004)	13
Employment of people living in the area by industry (2001)	15
Percentage of businesses in profile area by Standard Industrial Classification (2004)	16
Skills and Learning	17
Number and percentage of pupils achieving at least Key Stage 2 Level 4 (2004)	17
GCSE attainment (2003)	17
Highest level of qualification (2001)	18
Health, Care and Wellbeing	19
Incapacity Benefit and Severe Disablement Allowance and Disability Living Allowance (2004)	19
Percentage of people living with a limiting long-term illness (2001)	20
General health (2001)	21
Older People	22
Percentage of lone pensioner households (2001)	22
Number of Social Service clients per 1,000 population (2004)	22
Children and Young People	23
Children in need aged 0 to 17 years per 1,000 population aged 0 to 17 years (2003/04)	23
Young offenders aged 10 to 17 years per 1,000 population aged 10 to 17 years (2000 to 2002)	23
Community Safety	24
Total crime per 1,000 population (2004/05)	24
Vehicle crime per 1,000 population (2004/05)	25
Violent crime per 1,000 population (2004/05)	25
Drug offences per 1,000 population (2004/05)	26
Dwelling burglaries per 1,000 population (2004/05)	27
Housing	28
House price change (2001 to 2005)	28
Average house price (2004)	29
Percentage of dwellings by tenure (2001)	29
Transport	30
Car ownership (2001)	30
Mode of travel to work (2001)	31
Accessibility by public transport (2005)	31
The Environment – Landscape	32
Landscape character	32
Landscape Character Zones within the market town area	35
The Environment – Wildlife and Geology	36
Key sites	36
Key sites within the market town area	38

This profile makes use of data from the 1991 and 2001 Censuses. All such data is acknowledged as Crown Copyright.

Population

Summary

The structure of the population in the market town area is broadly similar to that across the district and the county. The area has relatively low numbers of over 65s with roughly 19% of the population compared to 21% in Teignbridge and 23% in Devon County Council – in Chudleigh this falls to 15%.

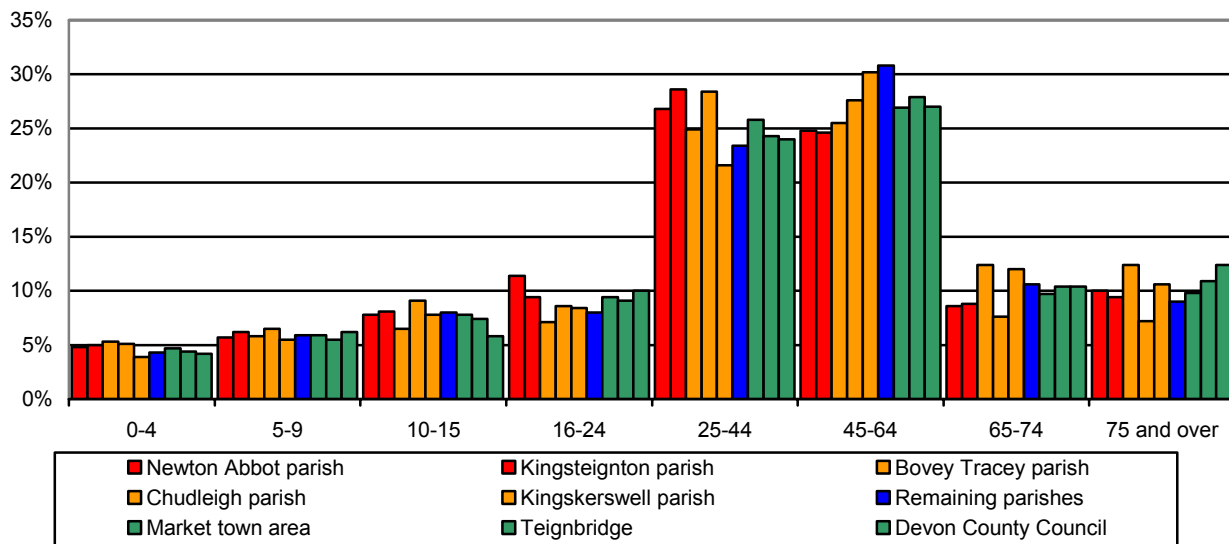
There has been significant population growth since 1991 in the market town area. This increase is more significant than the growth in the district and the county. This growth is not so much in Newton Abbot but rather in Bovey Tracey, Chudleigh, Kingsteignton and Kingskerswell.

The proportion of people from minority ethnic groups in the market town area is consistent with the district and county averages.

The level of households occupied by individuals in the market town area as a whole is similar to the district and county averages but the rural remaining parishes and Kingsteignton have comparatively low percentages.

Percentage of population by age band (2004)

Area	Total population	Age band							
		0-4	5-9	10-15	16-24	25-44	45-64	65-74	75 and over
Newton Abbot parish	24,994	4.8%	5.7%	7.8%	11.4%	26.8%	24.8%	8.6%	10.0%
Kingsteignton parish	10,981	5.0%	6.2%	8.1%	9.4%	28.6%	24.6%	8.8%	9.4%
Bovey Tracey parish	7,263	5.3%	5.8%	6.5%	7.1%	24.9%	25.5%	12.4%	12.4%
Chudleigh parish	4,289	5.1%	6.5%	9.1%	8.6%	28.4%	27.6%	7.6%	7.2%
Kingskerswell parish	5,070	3.9%	5.5%	7.8%	8.4%	21.6%	30.2%	12.0%	10.6%
Remaining parishes	16,467	4.3%	5.9%	8.0%	8.0%	23.4%	30.8%	10.6%	9.0%
Market town area	69,064	4.7%	5.9%	7.8%	9.4%	25.8%	26.9%	9.7%	9.8%
Teignbridge	126,742	4.4%	5.5%	7.4%	9.1%	24.3%	27.9%	10.4%	10.9%
Devon County Council	742,911	4.2%	6.2%	5.8%	10.0%	24.0%	27.0%	10.4%	12.4%



Source: South Devon Health Informatics Service (FHSA 2004)

Population change (1991 to 2004)

Area	1991	2001	2004	% change 1991-2004
Newton Abbot parish	22,603	24,619	24,991	10.6%
Kingsteignton parish	8,763	10,930	10,981	25.3%
Bovey Tracey parish	4,874	7,037	7,263	49.0%
Chudleigh parish	3,229	4,043	4,289	32.8%
Kingskerswell parish	4,201	4,995	5,070	20.7%
Remaining parishes	14,015	15,926	16,470	17.5%
Market town area	57,685	67,550	69,064	19.7%
Teignbridge	108,249	124,142	126,742	17.1%
Devon County Council	646,903	719,775	742,943	14.8%

Source: 1991 and 2001 Census, 2004 South Devon Health Informatics Service (FHSA data)

Ethnicity (2001)

Area	Ethnic Group				
	All People	White	% White	Black and minority ethnic	% Black minority ethnic
Newton Abbot parish	23,559	23,231	98.6%	328	1.4%
Kingsteignton parish	10,622	10,576	99.6%	46	0.4%
Bovey Tracey parish	6,933	6,888	99.4%	45	0.6%
Chudleigh parish	3,858	3,825	99.1%	33	0.9%
Kingskerswell parish	4,798	4,764	99.3%	34	0.7%
Remaining parishes	42,275	41,950	99.2%	325	0.8%
Market town area	65,834	65,181	99.0%	653	1.0%
Teignbridge	120,958	119,742	99.0%	1,216	1.0%
Devon County Council	704,493	696,590	98.9%	7,903	1.1%
England	49,138,831	44,679,361	90.9%	4,459,470	9.1%

Source: 2001 Census

Household composition (2001)

Area	All households	Single person households		Households comprising more than one person	
		Number	%	Number	%
Newton Abbot parish	9,751	2,944	30.2%	6,807	69.8%
Kingsteignton parish	4,486	1,185	26.4%	3,301	73.6%
Bovey Tracey parish	3,055	871	28.5%	2,184	71.5%
Chudleigh parish	1,558	429	27.5%	1,129	72.5%
Kingskerswell parish	2,082	606	29.1%	1,476	70.9%
Remaining parishes	6,342	1,455	22.9%	4,887	77.1%
Market town area	27,274	7,490	27.5%	19,784	72.5%
Teignbridge	51,417	14,940	29.1%	36,477	70.9%
Devon County Council	298,576	86,890	29.1%	211,686	70.9%
England	20,451,427	6,150,264	30.1%	14,301,163	69.9%

Source: 2001 Census

Deprivation

Summary

Two Lower Layer Super Output Areas are ranked in the most deprived 25% nationally, both are in Newton Abbot urban centre.

The principal source of deprivation data is currently The Indices of Deprivation 2004. This is a Lower Layer Super Output Area (LSOA) level measure of multiple deprivation and is made up of seven domains. A LSOA is an area of about 1,500 people and has been devised to standardise statistical geography across the country. The seven domains are:

- Income deprivation
- Employment deprivation
- Health deprivation and disability
- Education, skills and training deprivation
- Barriers to Housing and Services
- Living environment deprivation
- Crime

There are two supplementary Indices (Income Deprivation Affecting Children and Income Deprivation Affecting Older People).

The model which underpins the index of deprivation 2004 is based on the idea of distinct dimensions of deprivation which can be recognised and measured separately. These are experienced by individuals living in an area. Where possible, the indicators relate to 2001.

The information will help target policies and funding, reinforcing the Government's drive to improve the quality of life in disadvantaged communities.

There are over 32,000 LSOAs in the 2004 index, replacing the 8,500 wards used to construct the current index of multiple deprivation 2000. The LSOA boundaries were determined nationally with no local input.

The 2004 index was developed from academic research undertaken by Oxford University.

The table below compares the areas in Devon ranked in the most deprived 25% nationally, in terms of the number of wards in 2000 and the number of LSOAs in 2004, together with the population of these areas.

Comparison of IMD 2000 and ID 2004

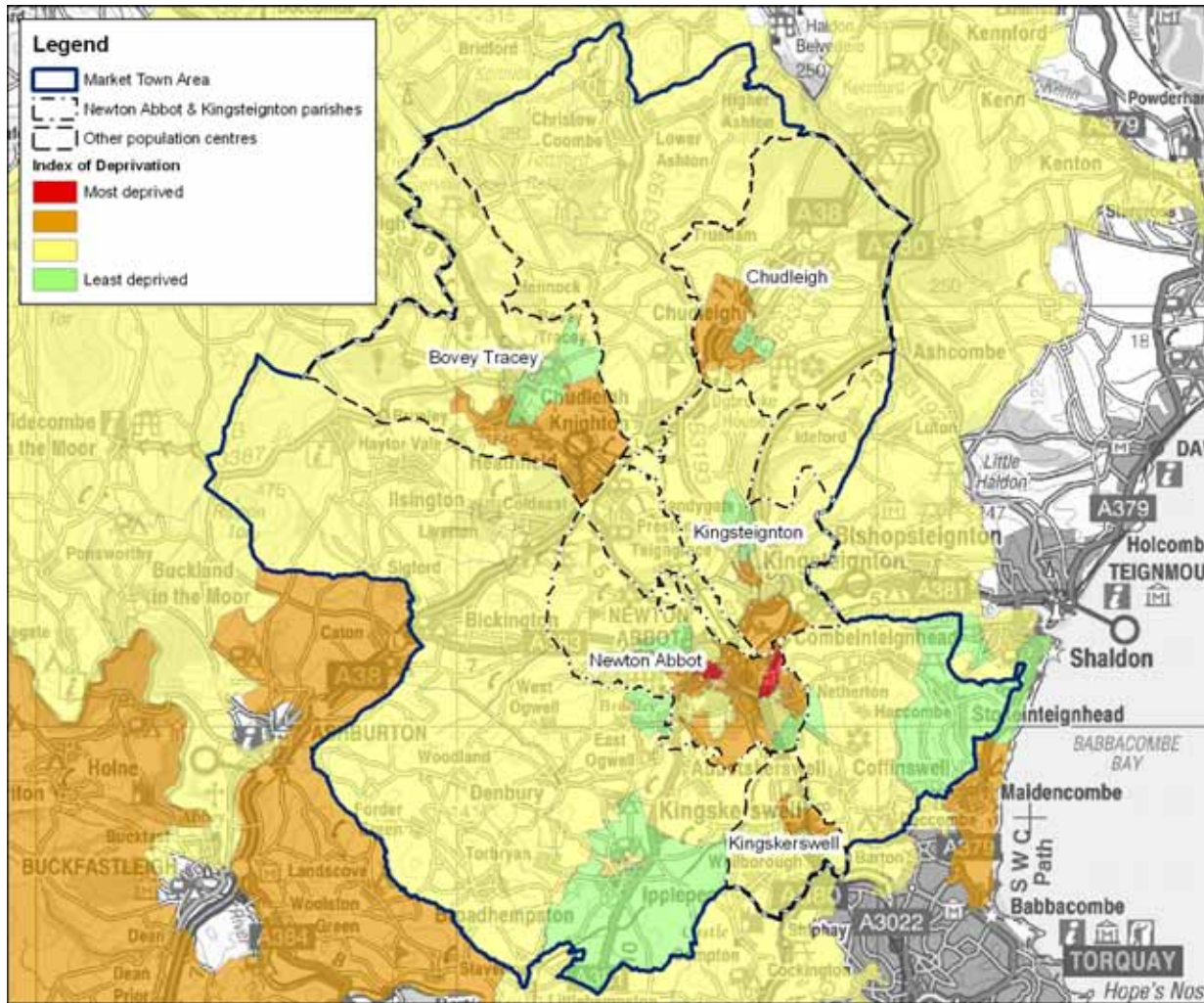
Area	IMD 2000		IMD 2004	
	Number of wards	Population	Number of LSOAs	Population
East Devon	1	3,901	0	0
Exeter	3	17,070	14	22,057
Mid Devon	0	0	1	1,652
North Devon	6	21,409	10	14,158
South Hams	1	5,458	0	0
Teignbridge	6	24,408	6	8,918
Torridge	10	22,217	3	5,731
West Devon	1	1,483	0	0
Devon County Council	28	95,946	34	52,516

Source: Office of the Deputy Prime Minister and South Devon Health Informatics Service (FHSA)

Application of the new index reduces the population in Devon perceived to be living in the most deprived areas by around 45%. This is probably due to the addition of crime and the living environment to the index, which in both cases the area covered by Devon County Council would have scored well compared to the national average. The reduced weighting given to the access to services domain may also be a contributing factor.

There are 46 LSOAs that fall either fully or partially within the area covered by this profile. Two of these are classified as being in the most deprived 25% of LSOAs nationally. 13 LSOAs fall into the next 25-50% and our mainly urban. 23 LSOAs fall into the 50-75% most deprived areas nationally and 8 are in the 75-100%.

Map of Index of Deprivation (2004)



Crown Copyright. All rights reserved. Devon County Council. 100019783 2006

Source: Office of the Deputy Prime Minister

The Local Economy

Summary

Unemployment levels in the market town area are broadly similar to those in the district and county except in Newton Abbot which is slightly higher.

Economic activity rates as a whole are similar to the county and national averages but especially high in Chudleigh and Kingsteignton. Self-employment levels in the surrounding hinterland are significantly higher than the all population centres, county and the national averages.

Claim rates for Income Support and Job Seekers Allowance are slightly lower than average across the area but Newton Abbot is higher than the county figure. This pattern is repeated for Job Seekers Allowance.

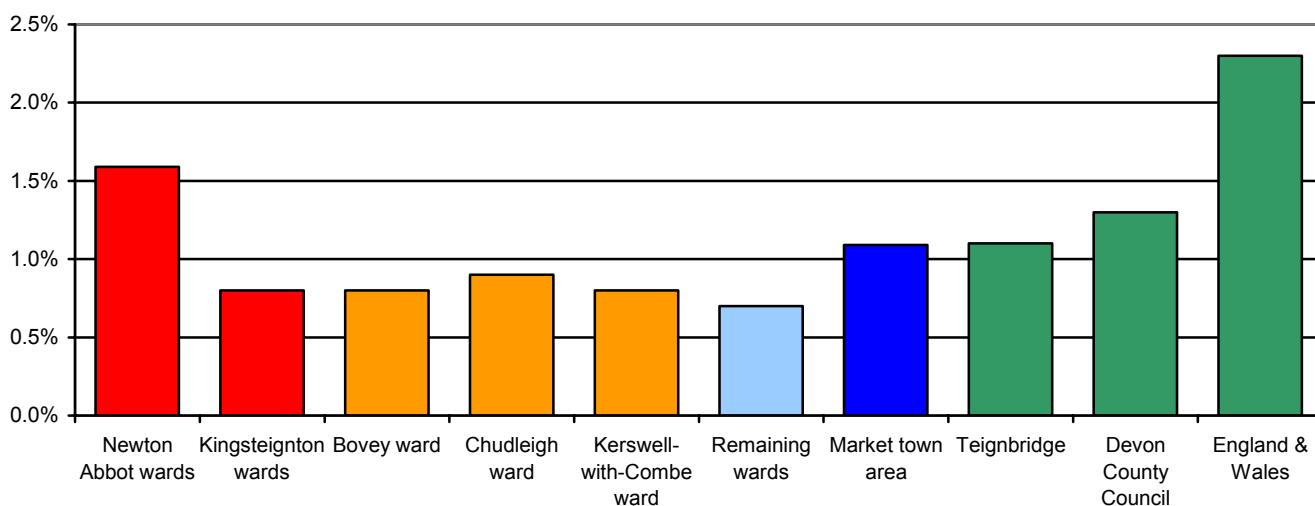
The number of households with an annual income of less than £20,000 is broadly similar to the district and county averages, although rates in the parish of Newton Abbot are higher.

The percentage of employment by industry sector of those living in the market town area highlights the main sectors of employment are wholesale & retail, health & social work and manufacturing. These represent around 46% of employment in the market town area.

The largest number of businesses in the market town area is within the wholesale & retail trade.

Unemployment as a proportion of working age resident population (April 2005)

Area	Number unemployed	% working age population
Newton Abbot wards	224	1.6%
Kingsteignton wards	54	0.8%
Bovey ward	31	0.8%
Chudleigh ward	29	0.9%
Kerswell-with-Combe ward	24	0.8%
Remaining wards	44	0.7%
Market town area	406	1.1%
Teignbridge	787	1.1%
Devon County Council	5,445	1.3%
England & Wales		2.3%



Source: Office of National Statistic

Economic activity (2001)

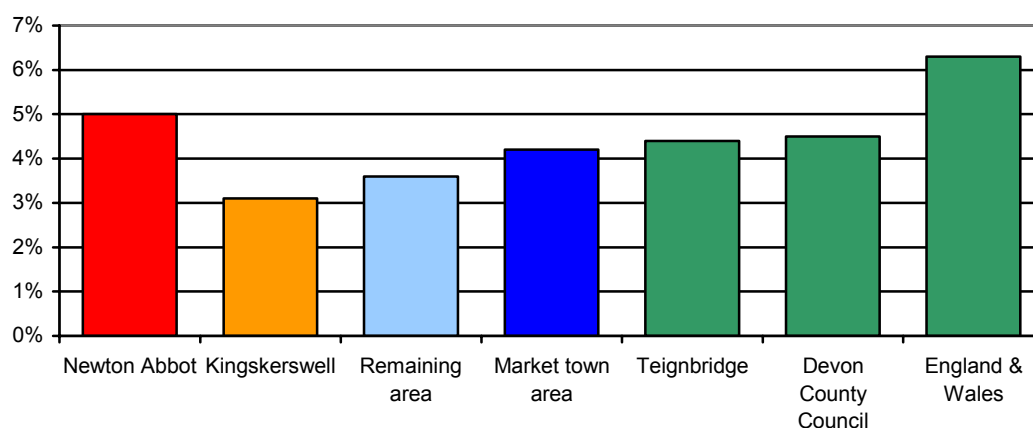
Area	People aged 16 to 74	Total economically active	Economically active	Employed part-time	Employed full-time	Self-employed	Unemployment	Students
Newton Abbot parish	16,487	10,993	66.7%	21.0%	58.0%	12.2%	4.1%	4.7%
Kingsteignton parish	7,512	5,298	70.5%	21.9%	60.2%	11.4%	3.1%	3.4%
Bovey Tracey parish	4,851	3,072	63.3%	20.1%	56.1%	17.6%	3.5%	2.7%
Chudleigh parish	2,665	1,881	70.6%	20.6%	56.5%	17.0%	3.5%	2.5%
Kingskerswell parish	3,394	2,215	65.3%	22.8%	53.4%	18.0%	2.3%	3.5%
Remaining parishes	11,603	7,508	64.7%	20.3%	50.8%	22.7%	3.2%	3.0%
Market town area	46,512	30,967	66.6%	21.0%	56.0%	15.8%	3.5%	3.6%
Teignbridge	85,036	55,375	65.1%	20.9%	54.1%	18.1%	3.5%	3.3%
Devon County Council	503,212	328,379	65.3%	20.5%	52.6%	19.3%	3.9%	3.6%
England	35,532,091	23,756,707	66.9%	17.7%	61.0%	12.4%	5.0%	3.9%

Source: 2001 Census

The data below relating to Income Support and Job Seekers Allowance are based on a best fit of Middle Super Output Areas (MSOAs). There are ten MSOAs within the market town area, five form an area similar to Newton Abbot parish, and one forms a similar area to Kingskerswell parish. It is not possible to produce a reasonable fit for Kingsteignton, Chudleigh and Bovey Tracey.

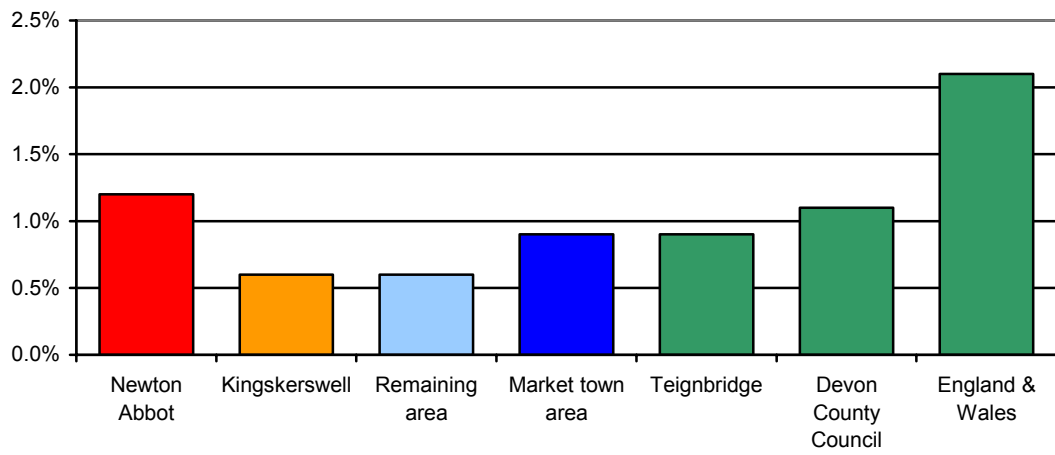
Income Support and Job Seekers Allowance claim rates (2004)

Area	Income Support			Jobseekers Allowance		
	Population aged 16 to 59	All claimants	Claim rate	Population aged 16 to 64	All claimants	Claim rate
Newton Abbot area	15,936	800	5.0%	17,305	200	1.2%
Kingskerswell area	2,918	90	3.1%	3,270	20	0.6%
Remaining area	15,251	555	3.6%	16,748	105	0.6%
Market town area	34,105	1,445	4.2%	37,323	325	0.9%
Teignbridge	65,146	2,860	4.4%	71,993	670	0.9%
Devon County Council	388,926	17,530	4.5%	429,574	4,765	1.1%
England & Wales	30,694,973	1,946,020	6.3%	33,239,665	689,810	2.1%

Income Support claimant rates (2004)

Source: Department for Work and Pensions

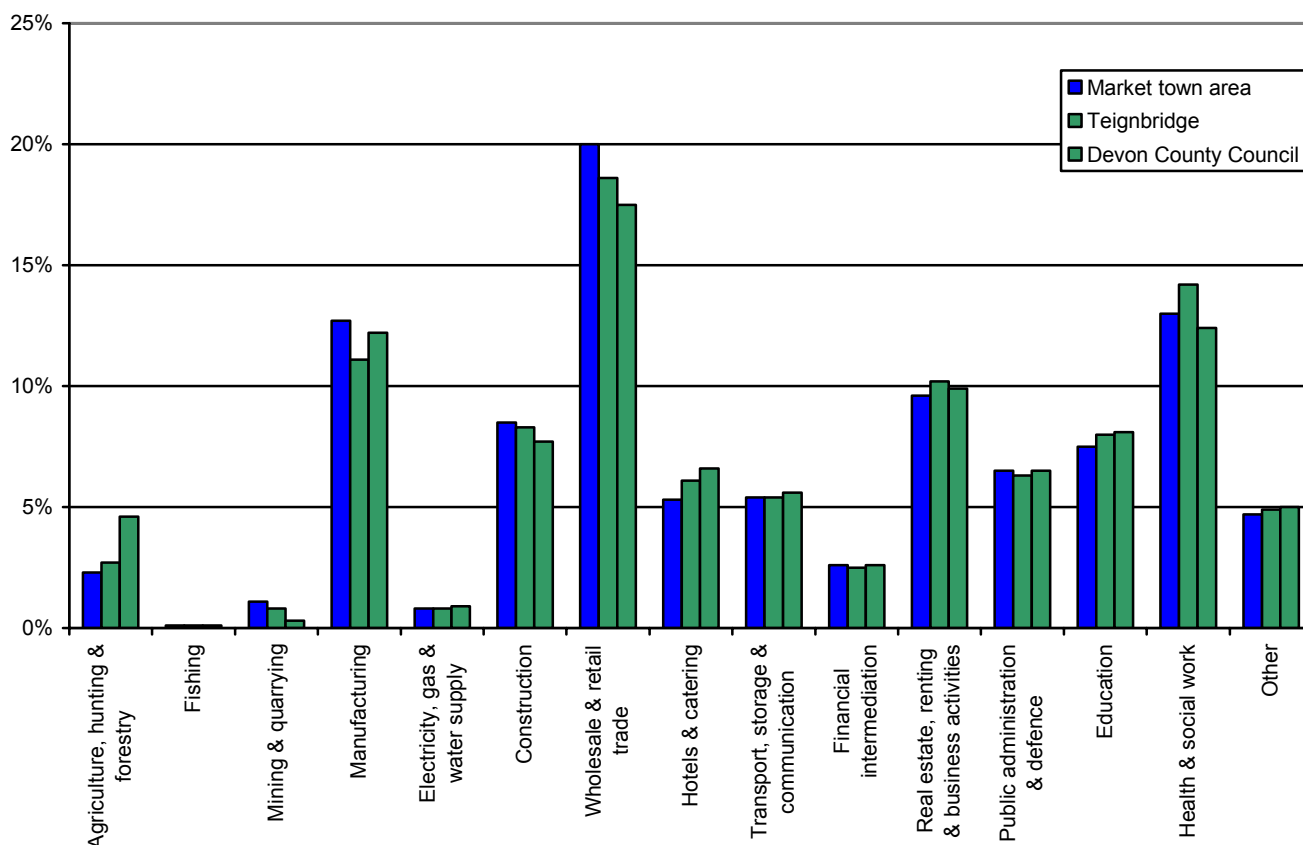
Job Seeker Allowance claim rates (2004)



Source: Department for Work and Pensions

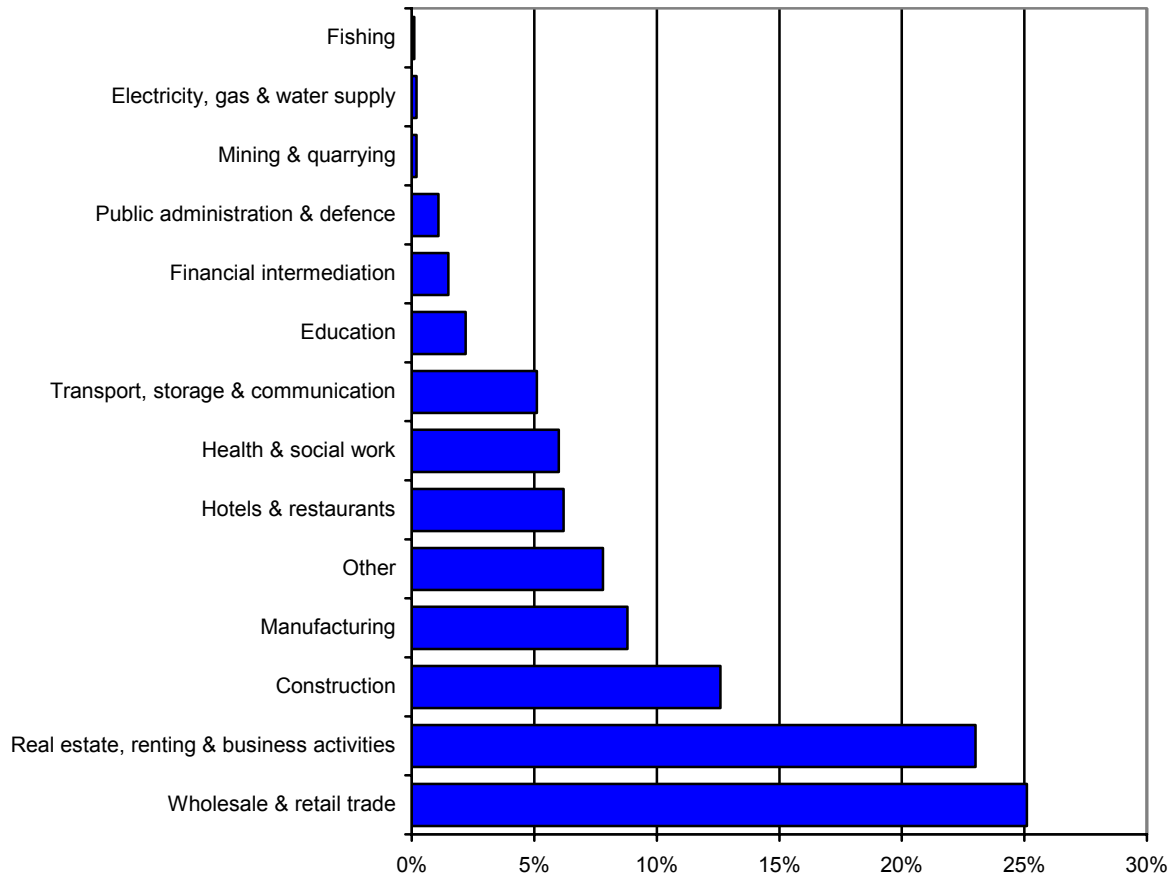
Employment of people living in the area by industry (2001)

Sector	Newton Abbot parish	Kingsteignton parish	Bovey Tracey parish	Chudleigh parish	Kingskerswell parish	Remaining parishes	Market town area	Teignbridge	Devon County Council
Agriculture, hunting & forestry	1.4%	1.6%	2.4%	2.8%	1.5%	4.3%	2.3%	2.7%	4.6%
Fishing	0.0%	0.2%	0.0%	0.0%	0.0%	0.2%	0.1%	0.1%	0.1%
Mining & quarrying	1.2%	1.5%	0.9%	1.1%	0.7%	1.0%	1.1%	0.8%	0.3%
Manufacturing	14.2%	12.6%	12.6%	10.8%	12.3%	11.2%	12.7%	11.1%	12.2%
Electricity, gas & water supply	0.7%	0.8%	0.9%	1.2%	0.4%	0.8%	0.8%	0.8%	0.9%
Construction	9.0%	9.0%	7.1%	6.7%	9.8%	8.1%	8.5%	8.3%	7.7%
Wholesale & retail trade	21.8%	22.7%	20.6%	16.1%	18.9%	16.6%	20.0%	18.6%	17.5%
Hotels & catering	5.0%	4.9%	5.7%	5.0%	6.9%	5.5%	5.3%	6.1%	6.6%
Transport, storage & communication	5.8%	5.6%	6.3%	6.8%	5.0%	4.0%	5.4%	5.4%	5.6%
Financial intermediation	2.1%	2.9%	2.7%	3.4%	3.1%	2.6%	2.6%	2.5%	2.6%
Real estate, renting & business activities	9.3%	8.5%	9.6%	11.2%	7.9%	10.8%	9.6%	10.2%	9.9%
Public administration & defence	5.5%	7.0%	5.9%	8.1%	6.7%	7.4%	6.5%	6.3%	6.5%
Education	6.7%	6.4%	8.1%	8.5%	6.9%	9.0%	7.5%	8.0%	8.1%
Health & social work	12.8%	11.7%	12.2%	13.3%	15.2%	13.7%	13.0%	14.2%	12.4%
Other	4.4%	4.6%	5.1%	4.9%	4.7%	5.0%	4.7%	4.9%	5.0%



Source: 2001 Census

Percentage of businesses in profile area by Standard Industrial Classification (2004)



Source: Annual Business Inquiry

Skills and Learning

Summary

Overall children in the area achieve a slightly lower level than the county and national averages at Key Stage 2 with children living in areas other than Newton Abbot parish achieve noticeably higher results than those that live in the parish.

Achievement rates for GCSEs at grades A* to C were also better for children living outside of Newton Abbot urban centre, although the percentage of children achieving five or more GCSEs at grades A* to G were similar across the market town area. Kingskerswell had worse results than Newton Abbot and Chudleigh was best in the area.

The overall level of qualification within the market town area is broadly similar to the district and county averages. However, the proportion of people with no qualifications is noticeably higher in Newton Abbot, Kingsteignton and Kingskerswell parishes compared to the district and county averages. The three parishes also have a smaller proportion of people with the highest level of qualification.

Number and percentage of pupils achieving at least Key Stage 2 Level 4 (2004)

Area	Total pupils	English		Maths		Science	
		Number	% pupils	Number	% pupils	Number	% pupils
Newton Abbot parish	286	207	72.4%	188	65.7%	238	83.2%
Kingsteignton parish	133	99	74.4%	100	75.2%	116	87.2%
Bovey Tracey parish	73	52	71.2%	53	72.6%	66	90.4%
Chudleigh parish	61	49	80.3%	52	85.2%	55	90.2%
Kingskerswell parish	42	35	83.3%	26	61.9%	37	88.1%
Remaining parishes	157	121	77.1%	117	74.5%	132	84.1%
Market town area	752	563	74.9%	536	71.3%	644	85.6%
Teignbridge	1,362	1,009	74.1%	962	70.6%	1,188	87.2%
Devon County Council	7,781	6,030	77.5%	5,766	74.1%	6,803	87.4%
England			75.0%		73.0%		86.0%

Source: Children and Young People's Services, Devon County Council

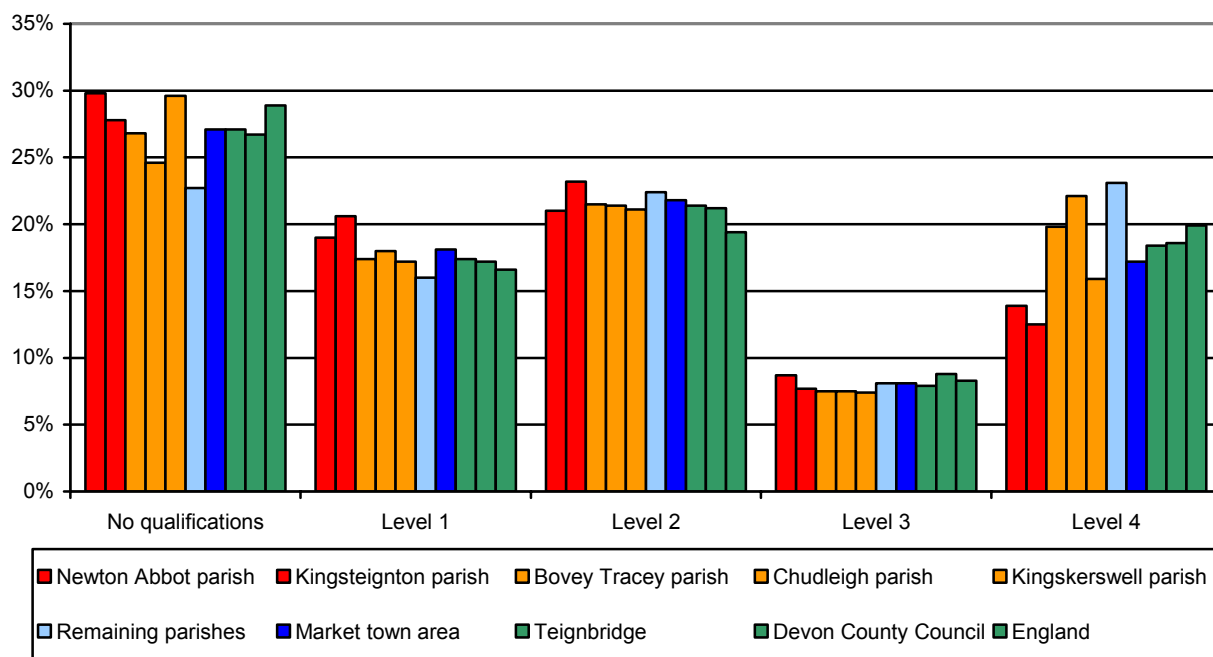
GCSE attainment (2003)

Area	Number of students	Students achieving five or more grade A*-C	% students achieving five or more grade A*-C	Students achieving five or more grade A*-G	% students achieving five or more grade A*-G
Newton Abbot parish	256	118	46.1%	238	93.0%
Kingsteignton parish	129	70	54.3%	126	97.8%
Bovey Tracey parish	59	33	55.9%	56	94.9%
Chudleigh parish	44	33	75.0%	42	95.5%
Kingskerswell parish	36	16	44.4%	33	91.8%
Remaining parishes	134	85	63.4%	128	95.5%
Market town area	658	355	54.0%	623	94.7%
Teignbridge	1,115	578	51.8%	1,051	94.3%
Devon County Council			52.6%		90.6%
England			52.9%		88.8%

Source: Children and Young People's Services, Devon County Council

Highest level of qualification (2001)

Area	No Qualification	Level 1	Level 2	Level 3	Level 4	Other
Newton Abbot parish	29.8%	19.0%	21.0%	8.7%	13.9%	7.6%
Kingsteignton parish	27.8%	20.6%	23.2%	7.7%	12.5%	8.2%
Bovey Tracey parish	26.8%	17.4%	21.5%	7.5%	19.8%	6.9%
Chudleigh parish	24.6%	18.0%	21.4%	7.5%	22.1%	6.5%
Kingskerswell parish	29.6%	17.2%	21.1%	7.4%	15.9%	8.8%
Remaining parishes	22.7%	16.0%	22.4%	8.1%	23.1%	7.8%
Market town area	27.1%	18.1%	21.8%	8.1%	17.2%	7.7%
Teignbridge	27.1%	17.4%	21.4%	7.9%	18.4%	7.9%
Devon County Council	26.7%	17.2%	21.2%	8.8%	18.6%	7.6%
England	28.9%	16.6%	19.4%	8.3%	19.9%	6.9%



Source: 2001 Census

Note:

Level 1: 1+'O' level passes, 1 CSE/GCSE any grades, NVQ level 1, Foundation GNVQ.

Level 2: 5+'O' level passes, 5+CSE's (grade A-C), School Certificate, 1+'A' levels/'AS' levels, NVQ level 2, Intermediate GNVQ.

Level 3: 2+'A' levels, 4+'AS' levels, Higher School Certificate, NVQ level 3, Advanced GNVQ.

Level 4: First degree, Higher degree, NVQ levels 4 and 5, HNC, HND, Qualified Teacher Status, Qualified, Medical Doctor, Qualified Dentist, Qualified Nurse, Midwife, Health Visitor.

Health, Care and Wellbeing

Summary

Incapacity Benefit and Severe Disablement Allowance claim rates are above the county average in Newton Abbot area, but lower in the remaining rural area.

The rate of people living with a limiting long-term illness in all the area listed in the table area are similar but below the district average.

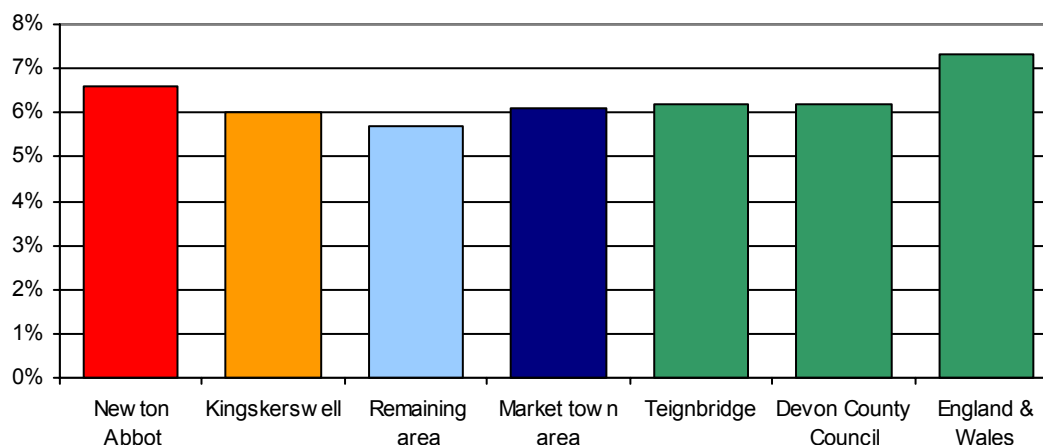
Across the board general health is comparable to the district and county averages.

The data below relating to Incapacity Benefit, Severe Disablement Allowance and Disability Living Allowance are based on a best fit of Middle Super Output Areas. There are ten MSOAs within the market town area, five form an area similar to Newton Abbot parish, and one forms a similar area to Kingskerswell parish. It is not possible to produce a reasonable fit for Kingsteignton, Chudleigh and Bovey Tracey.

Incapacity Benefit and Severe Disablement Allowance and Disability Living Allowance (2004)

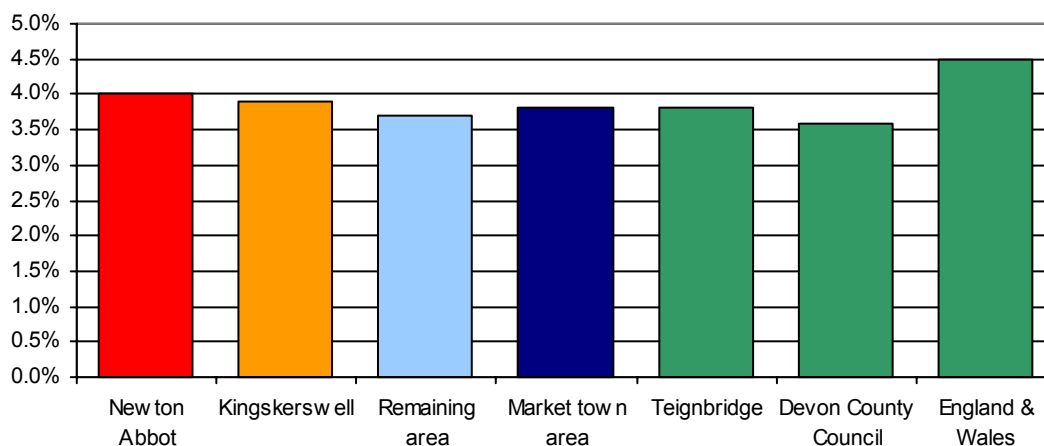
Area	Incapacity Benefit & Severe Disablement Allowance			Disability Living Allowance		
	Population aged 16 to 64	All claimants	Claim rate	Total population	All claimants	Claim rate
Newton Abbot area	17,305	1,140	6.6%	28,184	1,125	4.0%
Kingskerswell area	3,270	195	6.0%	5,489	215	3.9%
Remaining area	16,748	960	5.7%	28,063	1,035	3.7%
Market town area	37,323	2,295	6.2%	61,736	2,375	3.9%
Teignbridge	71,993	4,690	6.2%	120,913	4,645	3.8%
Devon County Council	429,574	26,670	6.2%	704,510	25,645	3.6%
England & Wales	33,239,665	2,421,940	7.3%	52,042,019	2,341,615	4.5%

Incapacity Benefit and Severe Disablement Allowance claimant rates (2004)



Source: Department for Work and Pensions

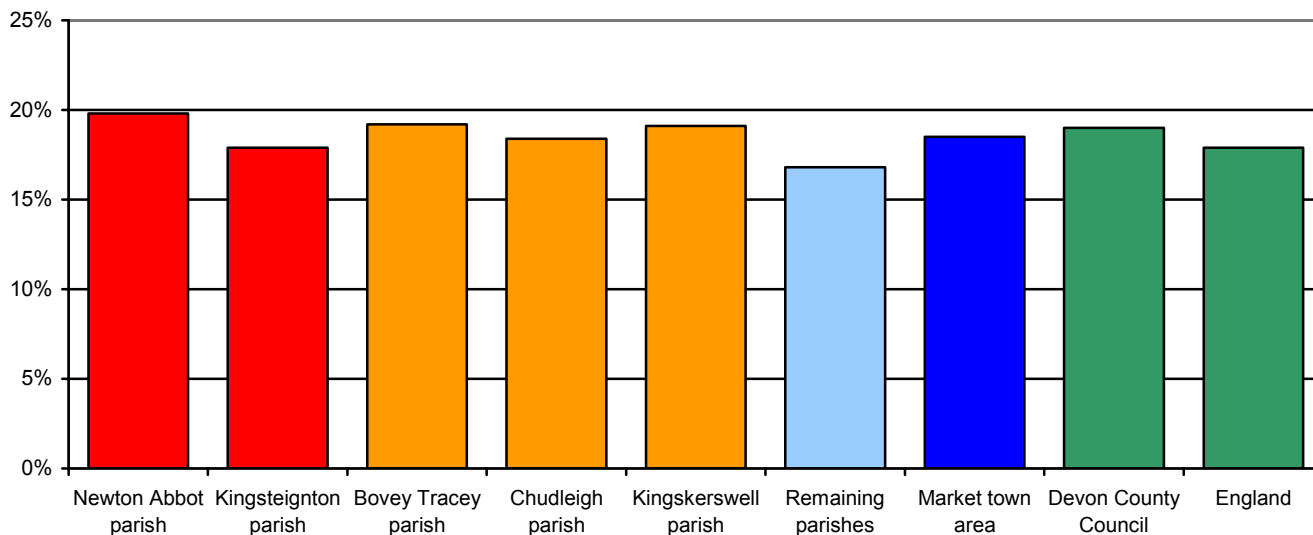
Disability Living Allowance claimant rates (2004)



Source: Department for Work and Pensions

Percentage of people living with a limiting long-term illness (2001)

Area	All people	People living with a limiting long-term illness	% people living with a limiting long-term illness
Newton Abbot parish	23,580	4,660	19.8%
Kingsteignton parish	10,615	1,896	17.9%
Bovey Tracey parish	6,929	1,328	19.2%
Chudleigh parish	3,846	707	18.4%
Kingskerswell parish	4,799	918	19.1%
Remaining parishes	16,060	2,692	16.8%
Market town area	65,829	12,201	18.5%
Teignbridge	120,958	24,185	20.0%
Devon County Council	704,493	133,756	19.0%
England	49,138,831	8,809,194	17.9%



Source: 2001 Census

General health (2001)

Area	All people	People describing their health as good or fairly good		People describing their health as not good	
		Number	%	Number	%
Newton Abbot parish	23,580	21,432	90.9%	2,148	9.1%
Kingsteignton parish	10,615	9,754	91.9%	861	8.1%
Bovey Tracey parish	6,929	6,379	92.1%	550	7.9%
Chudleigh parish	3,846	3,549	92.3%	297	7.7%
Kingskerswell parish	4,799	4,400	91.7%	399	8.3%
Remaining parishes	16,060	14,901	92.8%	1,159	7.2%
Market town area	65,829	60,415	91.8%	5,414	8.2%
Teignbridge	120,958	110,059	91.0%	10,899	9.0%
Devon County Council	704,493	643,988	91.4%	60,505	8.6%
England	49,138,831	44,702,955	91.0%	4,435,876	9.0%

Source: 2001 Census

Older People

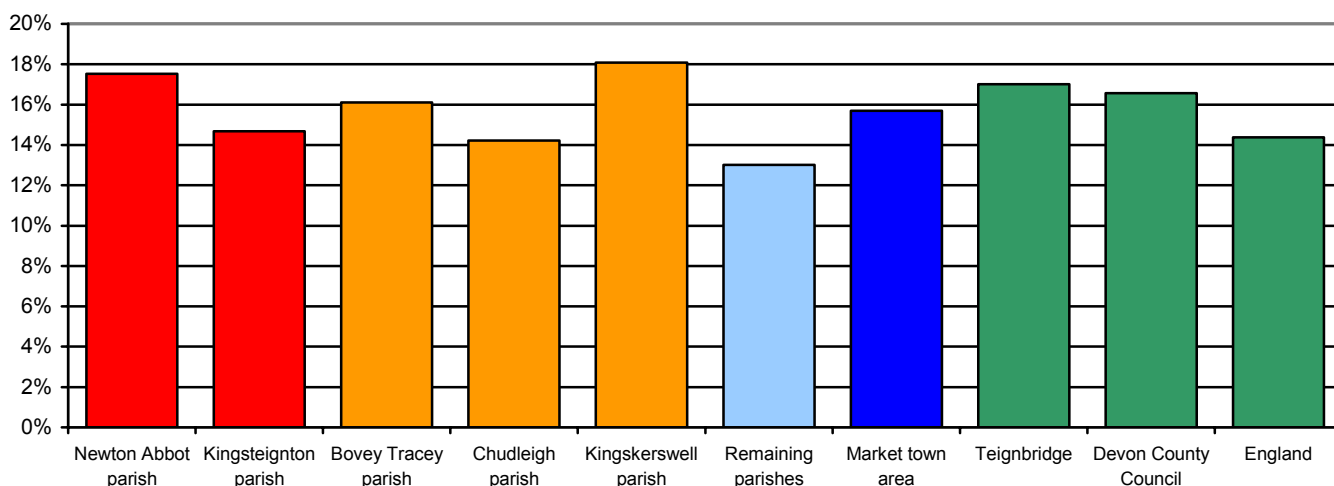
Summary

16% of households in the market town area are occupied by lone pensioners. This is below the county but above the national average.

The rate of Social Services clients is significantly higher in parish compared to the district and county averages.

Percentage of lone pensioner households (2001)

Area	All households	Households occupied by lone pensioners	% Households occupied by lone pensioners
Newton Abbot parish	9,718	1,703	17.5%
Kingsteignton parish	4,478	657	14.7%
Bovey Tracey parish	3,066	494	16.1%
Chudleigh parish	1,562	222	14.2%
Kingskerswell parish	2,091	378	18.1%
Remaining parishes	6,367	829	13.0%
Market town area	27,282	4,283	15.7%
Teignbridge	51,417	8,744	17.0%
Devon County Council	298,576	49,466	16.6%
England	20,451,427	2,939,465	14.4%



Source: 2001 Census

Number of Social Service clients per 1,000 population (2004)

Area	Clients by age group per 1,000 population of the same age group			
	50-64	65-74	75-84	85 or over
Newton Abbot parish	17.6	63.2	168.1	511.6
Kingsteignton parish	11.6	45.7	131.7	465.5
Bovey Tracey parish	10.4	31.1	94.7	392.2
Chudleigh parish	17.3	49.4	126.7	488.6
Kingskerswell parish	12.7	29.5	93.8	398.5
Remaining parishes	10.9	36.5	117.6	484.8
Market town total	12.8	43.4	128.5	452.3
Teignbridge	14.3	44.1	137.1	464.0
Devon County Council	14.7	40.3	140.8	454.6

Source: Adult and Community Services, Devon County Council

Children and Young People

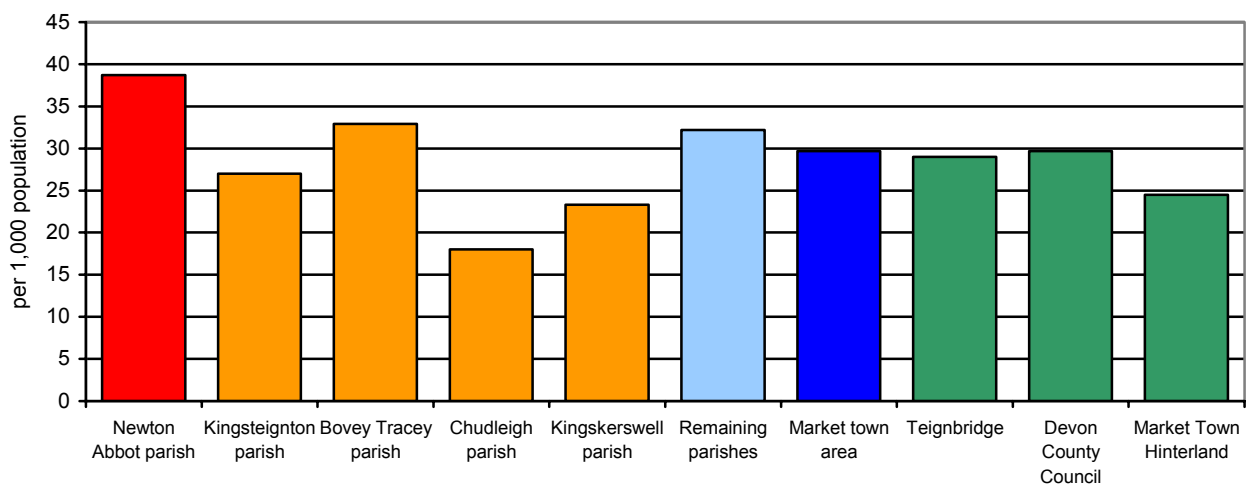
Summary

The proportion of children in need is similar to the averages for the district and county although the rate is higher in Newton Abbot parish.

The proportion of young offenders is significantly lower in the remaining wards of the market town area compared to Newton Abbot wards.

Children in need aged 0 to 17 years per 1,000 population aged 0 to 17 years (2003/04)

Area	Number of Children aged 0-17	Number of Children in Need aged 0-17	Number of children in need aged 0-17 per 1,000 population
Newton Abbot parish	5,239	203	38.7
Kingsteignton parish	2,403	65	27.0
Bovey Tracey parish	1,427	47	32.9
Chudleigh parish	999	18	18.0
Kingskerswell parish	989	23	23.3
Remaining parishes	11,057	356	32.2
Market town area	14,307	425	29.7
Teignbridge	24,693	717	29.0
Devon County Council	145,390	4,317	29.7



Source: Children and Young People's Services, Devon County Council

Young offenders aged 10 to 17 years per 1,000 population aged 10 to 17 years (2000 to 2002)

Area	2000	2001	2002
Newton Abbot wards	16.2	32.8	25.4
Kingsteignton wards	10.6	39.3	23.0
Chudleigh ward	7.3	14.5	15.3
Kerswell-with-Combe ward	5.4	17.7	20.3
Remainder wards	6.6	27.3	17.6
Market town area	10.6	29.4	21.2
Teignbridge	12.1	28.2	20.6
Devon County Council	14.2	20.0	19.3

Source: Youth Offending Team

Community Safety

Summary

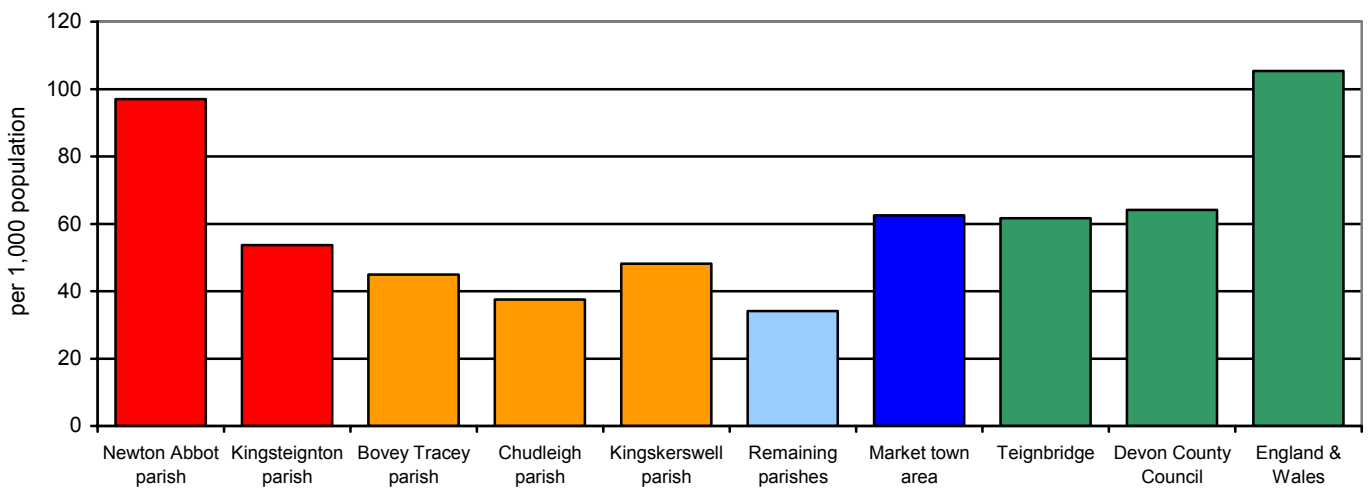
The rates of crime in all categories are highest in Newton Abbot parish which are above the county average.

The rate of violent crime and drug crime in Newton Abbot is above the national average.

Data comprises addressable data only, and as such rates are based on approx 92% of all crime.

Total crime per 1,000 population (2004/05)

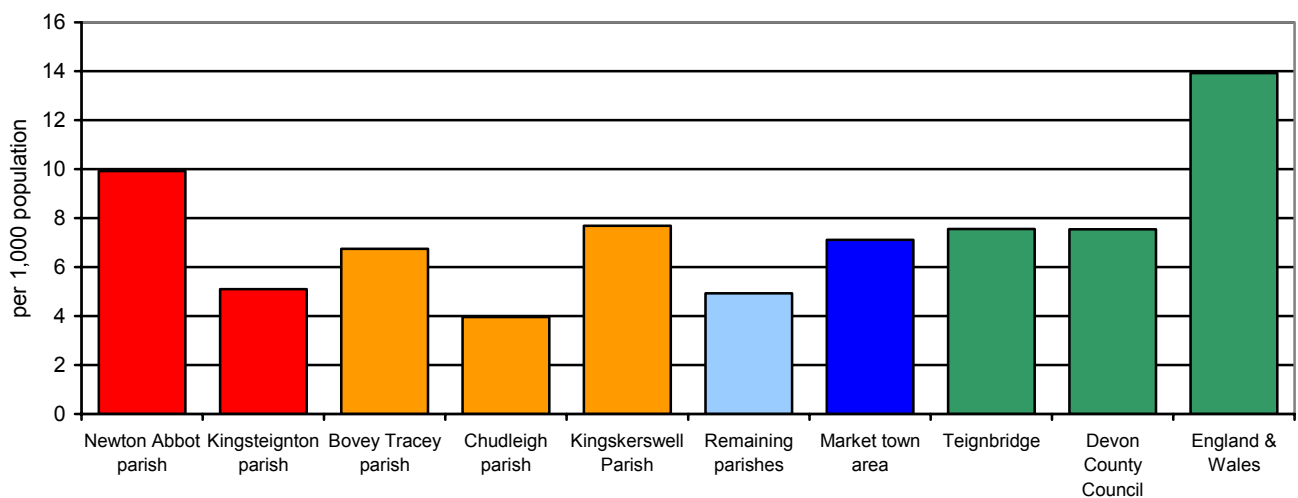
Area	Population	Total number of crimes	Crimes per 1,000 population
Newton Abbot parish	24,993	2,424	97.0
Kingsteignton parish	10,981	589	53.6
Bovey Tracey parish	7,259	326	44.9
Chudleigh parish	4,289	161	37.5
Kingskerswell parish	5,070	244	48.1
Remaining parishes	16,048	547	34.1
Market town area	68,640	4,291	62.5
Teignbridge	125,742	7,748	61.6
Devon County Council	742,940	47,666	64.2
England & Wales	53,045,600	5,562,700	104.9



Source: Devon and Cornwall Constabulary (Amethyst)

Vehicle crime per 1,000 population (2004/05)

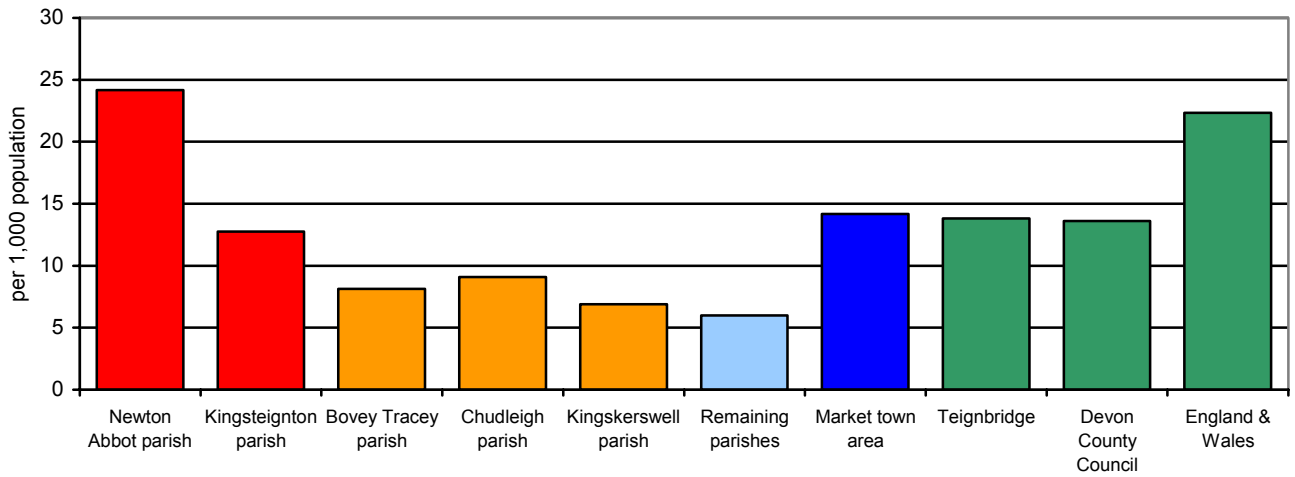
Area	Population	Number of vehicle crimes	Vehicle crimes per 1,000 population
Newton Abbot parish	24,993	248	9.9
Kingsteignton parish	10,981	56	5.1
Bovey Tracey parish	7,259	49	6.8
Chudleigh parish	4,289	17	4.0
Kingskerswell parish	5,070	39	7.7
Remaining parishes	16,048	79	4.9
Market town area	68,640	488	7.1
Teignbridge	125,742	950	7.6
Devon County Council	742,940	5,600	7.5
England & Wales	53,045,600	738,500	13.9



Source: Devon and Cornwall Constabulary (Amethyst)

Violent crime per 1,000 population (2004/05)

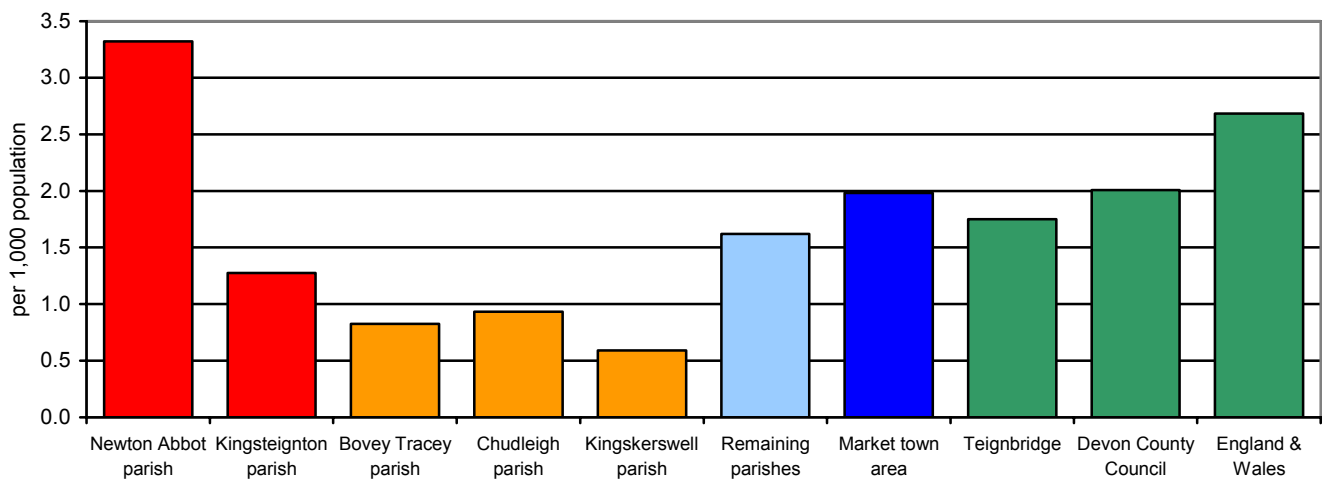
Area	Population	Number of violent crimes	Violent crimes per 1,000 population
Newton Abbot parish	24,993	604	24.2
Kingsteignton parish	10,981	140	12.7
Bovey Tracey parish	7,259	59	8.1
Chudleigh parish	4,289	39	9.1
Kingskerswell parish	5,070	35	6.9
Remaining parishes	16,048	96	6.0
Market town area	68,640	973	14.2
Teignbridge	125,742	1,755	13.8
Devon County Council	742,940	10,138	13.6
England & Wales	53,045,600	1,184,700	22.3



Source: Devon and Cornwall Constabulary (Amethyst)

Drug offences per 1,000 population (2004/05)

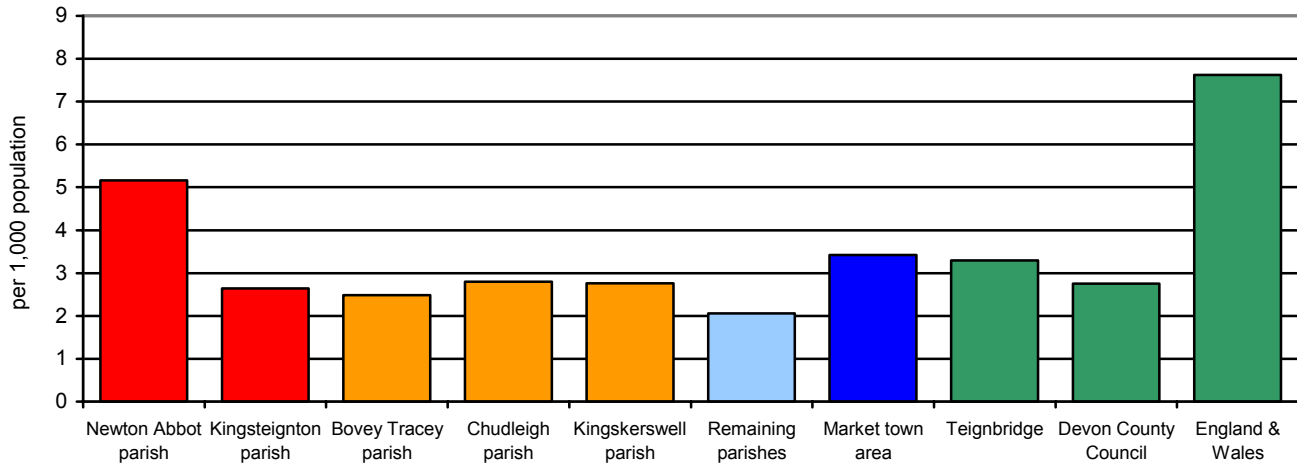
Area	Population	Number of drug offences	Drug offences per 1,000 population
Newton Abbot parish	24,993	83	3.3
Kingsteignton parish	10,981	14	1.3
Bovey Tracey parish	7,259	6	0.8
Chudleigh parish	4,289	n/a	0.9
Kingskerswell parish	5,070	n/a	0.6
Remaining parishes	16,048	26	1.6
Market town area	68,640	136	2.0
Teignbridge	125,742	220	1.7
Devon County Council	742,940	1,492	2.0
England & Wales	53,045,600	142,300	2.7



Source: Devon and Cornwall Constabulary (Amethyst)

Dwelling burglaries per 1,000 population (2004/05)

Area	Population	Number of dwelling burglaries	Dwelling burglaries per 1,000 population
Newton Abbot parish	24,993	129	5.2
Kingsteignton parish	10,981	29	2.6
Bovey Tracey parish	7,259	18	2.5
Chudleigh parish	4,289	12	2.8
Kingskerswell parish	5,070	14	2.8
Remaining parishes	16,048	33	2.1
Market town area	68,640	235	3.4
Teignbridge	125,742	414	3.3
Devon County Council	742,940	2,046	2.8
England & Wales	53,045,600	321,500	7.6



Source: Devon and Cornwall Constabulary (Amethyst)

Housing

Summary

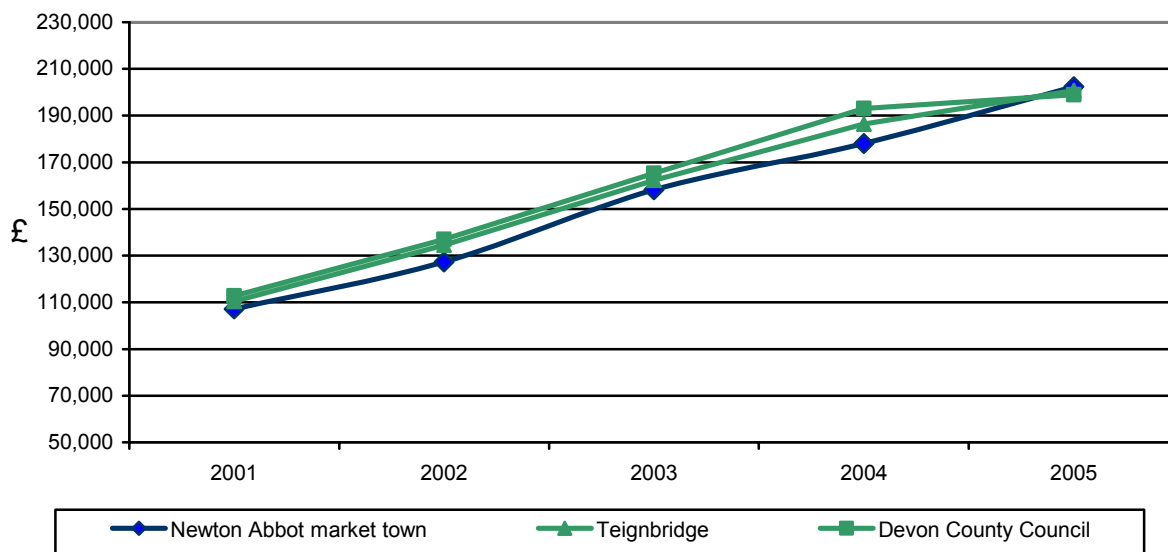
In 2004 house prices outside Newton Abbot were currently around 29% less than those in the remaining parishes. However prices have risen by 93% in Newton Abbot since 2001.

In 2004 average overall house prices within the market town area is similar to the national average. However, there are noticeable variations between the types of property.

Tenure rates in the market town area are similar to those in the district. The level of owner occupied households is above the national average.

House price change (2001 to 2005)

Area	2001	2002	2003	2004	2005	% change 2001 - 2005
Newton Abbot parish	£97,051	£113,920	£141,637	£161,558	£187,656	93.4%
Kingsteignton parish	£95,361	£114,680	£146,739	£168,388	£177,656	86.3%
Bovey Tracey parish	£113,130	£142,247	£173,980	£189,823	£238,495	110.8%
Chudleigh parish	£123,277	£148,094	£187,360	£177,374	£192,546	56.2%
Kingskerswell parish	£112,437	£147,151	£165,969	£184,290	£210,394	87.1%
Remaining parishes	£133,663	£146,953	£179,555	£214,616	£226,044	69.1%
Market town area	£107,226	£127,235	£158,202	£178,070	£202,388	88.7%
Teignbridge	£110,408	£134,567	£162,237	£186,382	£200,711	81.8%
Devon County Council	£112,771	£136,987	£165,267	£193,010	£199,010	76.5%



Source: Land Registry

Note: Data comprises sales between April and December 2001, all sales in 2002, 2003 and 2004 and from January to March 2005.

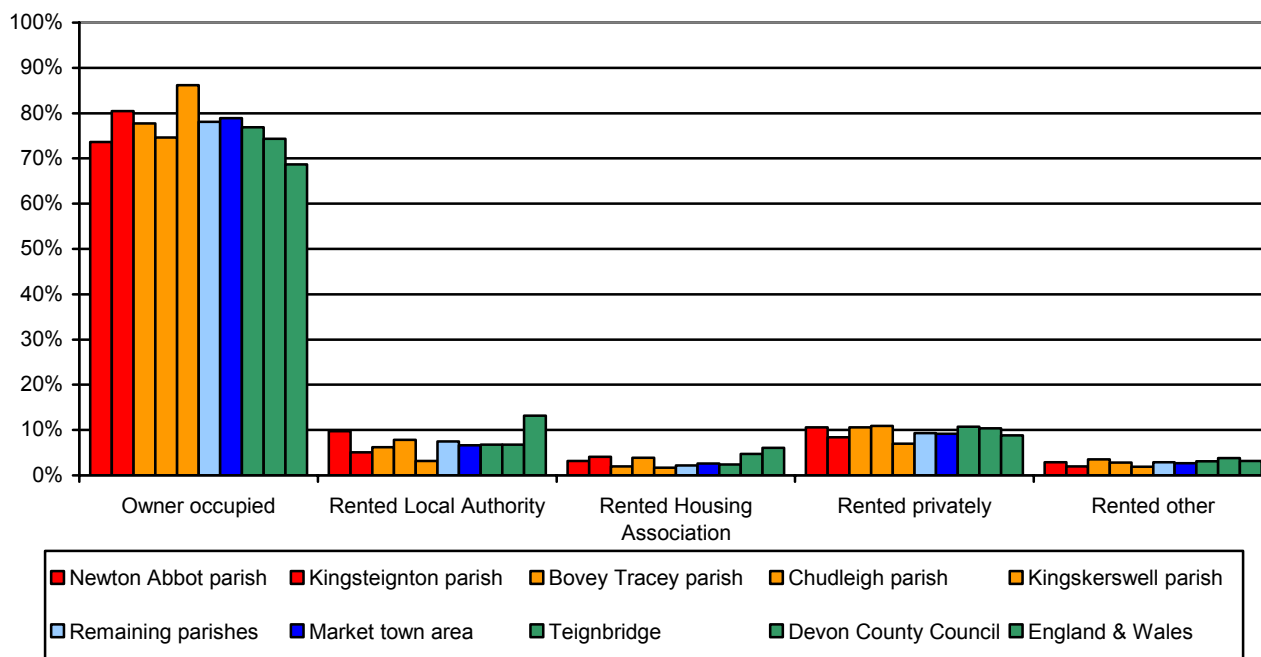
Average house price (2004)

Area	Detached	Semi-Detached	Terraced	Flat/Maisonette	Overall
Newton Abbot Parish	£250,429	£168,139	£130,126	£109,050	£161,558
Kingsteignton Parish	£211,788	£166,456	£137,908	£103,100	£168,389
Bovey Tracey Parish	£251,335	£166,856	£145,858	£118,389	£189,824
Chudleigh Parish	£230,436	£148,899	£142,734	£111,225	£177,378
Kingskerswell Parish	£236,317	£168,220	£143,098	£68,750	£184,290
Remaining Parishes	£259,299	£196,614	£156,250	£130,625	£214,616
Market town area	£242,866	£171,100	£138,129	£110,034	£178,070
Teignbridge	£254,145	£178,554	£146,068	£117,610	£186,382
Devon County Council	£266,940	£180,252	£157,985	£138,260	£193,056
England & Wales	£270,745	£162,379	£136,862	£168,298	£178,504

Source: Land Registry

Percentage of dwellings by tenure (2001)

Area	All households	Owner occupied	Rented Accommodation:			
			Local Authority	Housing association	Private	Other
Newton Abbot parish	9,751	73.6%	9.7%	3.2%	10.6%	2.9%
Kingsteignton parish	4,486	80.5%	5.1%	4.1%	8.4%	2.0%
Bovey Tracey parish	3,055	77.7%	6.2%	2.0%	10.6%	3.5%
Chudleigh parish	1,558	74.6%	7.8%	3.9%	10.9%	2.8%
Kingskerswell parish	2,082	86.2%	3.2%	1.7%	7.0%	1.9%
Remaining parishes	16,101	78.1%	7.5%	2.2%	9.3%	2.9%
Market town area	27,282	78.9%	6.6%	2.6%	9.2%	2.7%
Teignbridge	51,417	76.9%	6.8%	2.4%	10.7%	3.1%
Devon County Council	298,576	74.3%	6.8%	4.7%	10.4%	3.8%
England & Wales	20451,427	68.7%	13.2%	6.1%	8.8%	3.2%



Source: 2001 Census

Transport

Summary

There are higher levels of car ownership outside Newton Abbot parish. Nearly a quarter of households in Newton Abbot parish do not have access to a car.

About 11% of people living in the market town work from home; this is higher in the remaining parishes with a percentage of 16%, this is above all three comparisons. Within Newton Abbot 18% travel to work on a bike or foot. This is noticeably higher than the district and county averages.

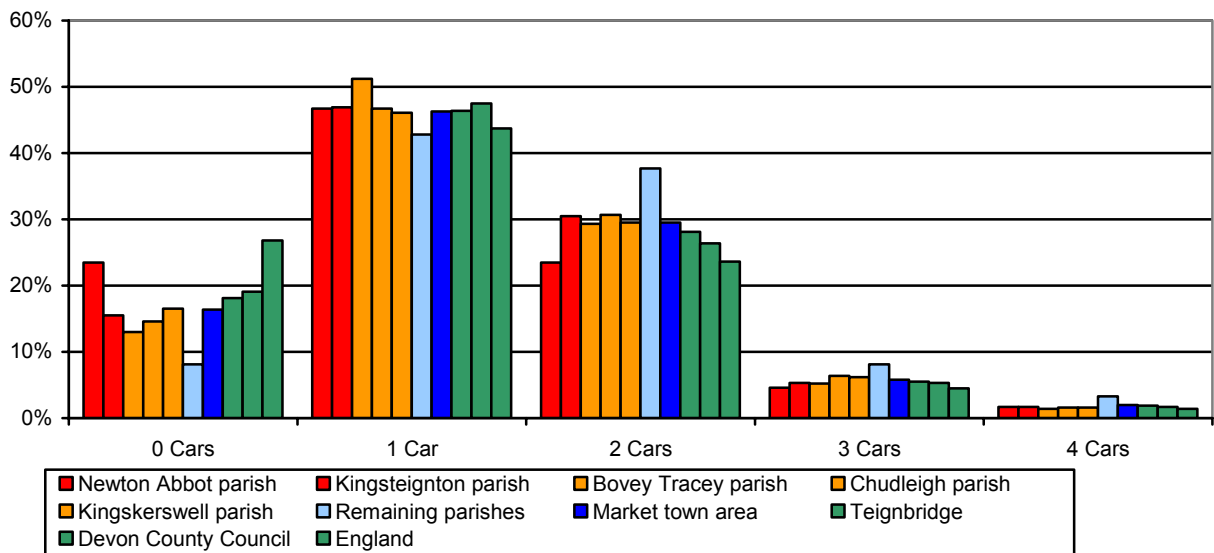
The percentage of households in the market town area that can access a GP within 30 minutes by public transport is noticeably below the county and national averages.

Access to an acute hospital by public transport within 60 minutes is similar to the district and noticeable higher than the national average.

Access to a shop by public transport within the market town area is broadly similar to the county average, but lower than the district and national average. Access is more noticeably lower in the remaining parishes.

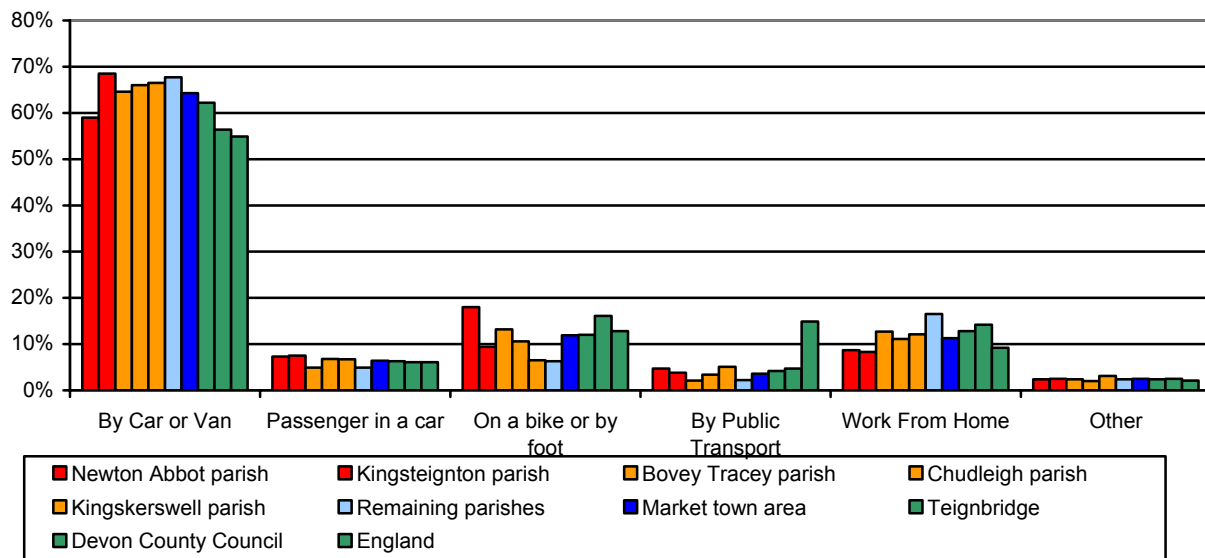
Car ownership (2001)

Area	All households	Households with:				
		No car	One car	Two cars	Three cars	Four or more cars
Newton Abbot parish	9,751	23.5%	46.7%	23.5%	4.6%	1.7%
Kingsteignton parish	4,486	15.5%	46.9%	30.5%	5.3%	1.7%
Bovey Tracey parish	3,055	13.0%	51.2%	29.3%	5.2%	1.4%
Chudleigh parish	1,558	14.6%	46.7%	30.7%	6.4%	1.6%
Kingskerswell parish	2,082	16.5%	46.1%	29.5%	6.2%	1.6%
Remaining parishes	6,347	8.1%	42.8%	37.7%	8.1%	3.3%
Market town area	27,279	16.4%	46.3%	29.5%	5.8%	2.0%
Teignbridge	51,417	18.1%	46.4%	28.1%	5.5%	1.9%
Devon County Council	298,576	19.1%	47.5%	26.4%	5.3%	1.7%
England	20,451,427	26.8%	43.7%	23.6%	4.5%	1.4%



Mode of travel to work (2001)

Area	All People 16-74 in employment	% of population by mode of travel to work					
		By Car or Van	Passenger in a car	On a bike or by foot	By public transport	Work from home	Other
Newton Abbot parish	10,472	59.0%	7.3%	18.0%	4.7%	8.7%	2.4%
Kingsteignton parish	5,101	68.5%	7.5%	9.4%	3.8%	8.3%	2.5%
Bovey Tracey parish	2,986	64.6%	4.9%	13.2%	2.1%	12.7%	2.4%
Chudleigh parish	1,823	66.0%	6.8%	10.6%	3.4%	11.1%	2.0%
Kingskerswell parish	2,169	66.5%	6.7%	6.5%	5.1%	12.1%	3.1%
Remaining parishes	7,227	67.7%	4.9%	6.3%	2.2%	16.5%	2.4%
Market town area	29,778	64.3%	6.4%	11.9%	3.6%	11.3%	2.5%
Teignbridge	53,228	62.2%	6.3%	12.0%	4.2%	12.8%	2.4%
Devon County Council	314,267	56.4%	6.1%	16.1%	4.7%	14.2%	2.5%
England	22,441,498	54.9%	6.1%	12.8%	14.9%	9.2%	2.1%



Source: 2001 Census

The data below relating to Accessibility by public transport are based on a best fit of Lower Super Output Areas (LSOAs).

Accessibility by public transport (2005)

Area	Households	Percentage of households that can access:		
		Acute Hospital within 60 minutes	GP within 30 minutes	Shops within 30 minutes
Newton Abbot	9,825	100.0%	100.0%	100.0%
Kingsteignton	4,716	99.1%	94.7%	96.0%
Bovey Tracey	3,323	72.9%	85.5%	85.5%
Chudleigh	1,557	100.0%	100.0%	100.0%
Kingskerswell	1,955	100.0%	100.0%	100.0%
Remainder	6,406	67.6%	61.4%	70.6%
Market town area	27,782	89.1%	88.5%	90.8%
Teignbridge	51,423	87.8%	88.3%	91.0%
Devon County Council	298,578	66.7%	86.6%	85.2%
England	17,436,116	82.8%	95.2%	94.4%

Source: Department for Transport

Note: Acute hospitals are establishments which provide at least minimal medical, surgical or obstetrical services for inpatient treatment and/or care, and which provide round-the-clock comprehensive qualified nursing service as well as other necessary professional services. Most patients require a relatively short stay.

The Environment – Landscape

Summary

In 2002 Devon County Council undertook and published a landscape appraisal of the county which included a landscape character assessment. The result of this assessment was the division of the County into 32 Landscape Character Zones. The Newton Abbot and Kingsteignton market town area contains seven Landscape Character Zones.

Landscape character

Landscape character is defined as a distinct and recognisable pattern of elements that occur consistently in a particular type of landscape. Character makes each part of the landscape distinct, and gives each its particular sense of place.

Landscape character has an important role to play in that it informs the Devon County Structure Plan's fundamental landscape policy (CO1), requiring that development should be informed by and sympathetic to the landscape character of the area.

In 2002 Devon County Council undertook and published a landscape appraisal of the County which included a landscape character assessment. The result of this assessment was the division of the County into 32 Landscape Character Zones (LCZs), each with its own description and distinctive key characteristic features. The Newton Abbot and Kingsteignton market town area contains parts of seven of these LCZs. For those which are largely within the market town area some of their key characteristics are outlined below.

Bovey Basin

Location - At the head of the Teign Estuary, just to the east of Dartmoor, the main river is joined by a major tributary, the River Bovey. The zone represents the flood plain of the two rivers, stretching between Bovey Tracey and Newton Abbot and east to Kingsteignton and Chudleigh. This zone represents the centre of the market town area.

Designations – A small area on the northern fringe of the zone has been designated an Area of Great Landscape Value, indicating a County significance; it is, however, more of a backdrop to the zone than an integral part of it. There are no other designations.

Key Characteristic Features

- Largely flat river basin ringed by hills, often wooded, including the rim of Dartmoor.
- Vast open-cast ball clay quarrying, spoil pits, settling lakes and associated buildings.
- Artificial lakes and ponds from past quarrying activity.
- Conifer plantations, other woodland belts and scrub.
- Open heathland areas.
- Expanding urban areas, scattered residential development, industrial estates, main roads, power lines.

Haldon Ridge

Location - The zone encompasses the north-south ridge of Great Haldon and Little Haldon, in the south-central part of Devon between the Exe Estuary to the east and the Teign Valley to the west. The east of the market town area is occupied by this zone.

Designations - The whole of the zone has been designated an Area of Great Landscape Value, signifying its landscape importance in a county context.

Key Characteristics Features

- Isolated high ridge forming a dominant backdrop to the Exe Estuary and Exeter, but also to the eastern edge of Dartmoor.
- Extensive coniferous forest area covering former lowland heath.
- Important areas of broad-leaved woodland on ridge flanks.
- Forest, open glades, heathland and pasture providing a combination of valuable habitats.
- Major trunk roads dissect the area.

Teign Valley

Location - The zone covers the middle Teign Valley, in the south-central part of the County. It abuts the eastern edge of Dartmoor and is centred on the Teign from near Chagford downstream to the neighbourhood of Chudleigh. The course of the river results in the zone trending west-east between Chagford and Dunsford and north-south between Dunsford and Chudleigh. The northern part of the market town area falls within this zone.

Designations – Almost the whole of the west-east element of the zone falls within the Dartmoor National Park. The Teign itself forms the National Park boundary in most of the north-south element, the west bank being included. The designation highlights the national landscape importance of much of this zone. The remainder of the zone, primarily the east bank of the Teign, but both sides of the Valley in the south, have been designated as an Area of Great Landscape Value, indicating that this area also has a county significance.

The market town area includes an element of both Dartmoor National Park and the Area of Great Landscape Value.

Key Characteristic Features

- Distinctive, often intimate valley sandwiched between the highlands of Dartmoor and Great Haldon.
- Valley dominated by woodland on steep, sometimes rocky flanks.
- Small scale, irregular field pattern with strong hedgebanks.
- Small villages tucked into side valleys away from the main valley.
- Tree lined river course with stone bridges, weirs, mills and daffodil woods.

Tourist Riviera

Location - The zone stretches along the English Channel coast from Dawlish Warren at the mouth of the Exe to Berry Head, the southern limit of Tor Bay. It includes the resorts of Dawlish and Teignmouth, the Teign Estuary and the urban development of Torbay – Torquay, Paignton and Brixham – and its immediate hinterland. That part of the zone south of the Teign Estuary falls within the market town area.

Designations - With the exception of the developed areas, most of the zone has been designated as an Area of Great Landscape Value, indicating a landscape of county importance. The County Council's Coastal Preservation Area designation covers the undeveloped coastal areas and the Teign Estuary.

Key Characteristic Features

- Extensive coastal development of resorts and associated tourist infrastructure.
- Elegant seafront parks, promenades, palms, pines, white "riviera" buildings.
- Small scale, dissected, hilly landscape in hinterland.
- Tidal Teign Estuary, largely undeveloped.
- Coastal cliffs, ranging from red sandstone to limestone headlands.
- Steep urban areas overlooking bay, estuary and harbours.

Under Dartmoor

Location – The slightly ambiguous zone title refers to the area of South Devon immediately to the south of Dartmoor. It stretches from Newton Abbot and Totnes in the east to the outskirts of Plymouth in the west. It also extends south towards Kingsbridge. The south western part of the market town area falls within this zone.

Designations – An area in the centre, where the valley of the River Avon crosses the zone, is part of the South Devon Area of Outstanding Natural Beauty, a designation indicating national landscape significance. Large areas of the remainder of the zone have been designated an Area of Great Landscape Value, indicative of a landscape of County significance. Parts of the western end of the zone, the area between the Avon and Dart valleys and that to the north east of the Dart Valley, including the element within the market town area, have no designations.

Key Characteristic Features

- A plateau surface dissected by major rivers flowing off Dartmoor.
- Complex, steeply undulating landform shaping the overall plateau, the result of a network of streams and valleys.
- Farming landscape dominated by Dartmoor on the northern skyline.
- Patchwork of fields, small woodlands and hedgerows with some estate planting, including hilltop clumps.
- Scattered settlement of dispersed farmsteads and villages.
- Elements of limestone scenery in the north east.
- Influence of the A38 road along the northern edge.

Dartmoor Enclosed

Location – The zone is a horseshoe-shaped area of land cupped around the eastern, southern and western sides of Dartmoor. It is a generally fairly narrow band stretching from South Zeal in the north east all the way round to Bridestowe in the north west, with a significantly expanded area towards Widecombe in the south. This zone falls within the west and north west of the market town area.

Designations – Most of the zone falls within the Dartmoor National Park, reflecting a landscape of national significance. Parts of the outer edges of the zone in the west are excluded from the National Park. Here, a small area near Yelverton is included within another landscape of national importance, the Tamar Valley Area of Outstanding Natural Beauty. Other outer edges have been designated within the county's Areas of Great Landscape Value, including the fringes of the Lyd Valley in the north west, the Plym Valley in the south west and Crownhill Down further east.

Within the market town area, much of this zone lies within Dartmoor National Park with a small part designated within the Area of Great Landscape Value.

Key Characteristic Features

- Strongly undulating landscape underlain by granite geology.
- Cut by distinctive wooded valleys.
- Strong field pattern, characterised both by hedges and stone walls.
- Enclosed, wooded appearance deriving from the valley woodlands, bushy hedgerows and hedgerow trees.
- Close visual relationship with adjacent high moor.
- Granite buildings, especially farmhouses.
- China clay works.

Dartmoor – High Moor

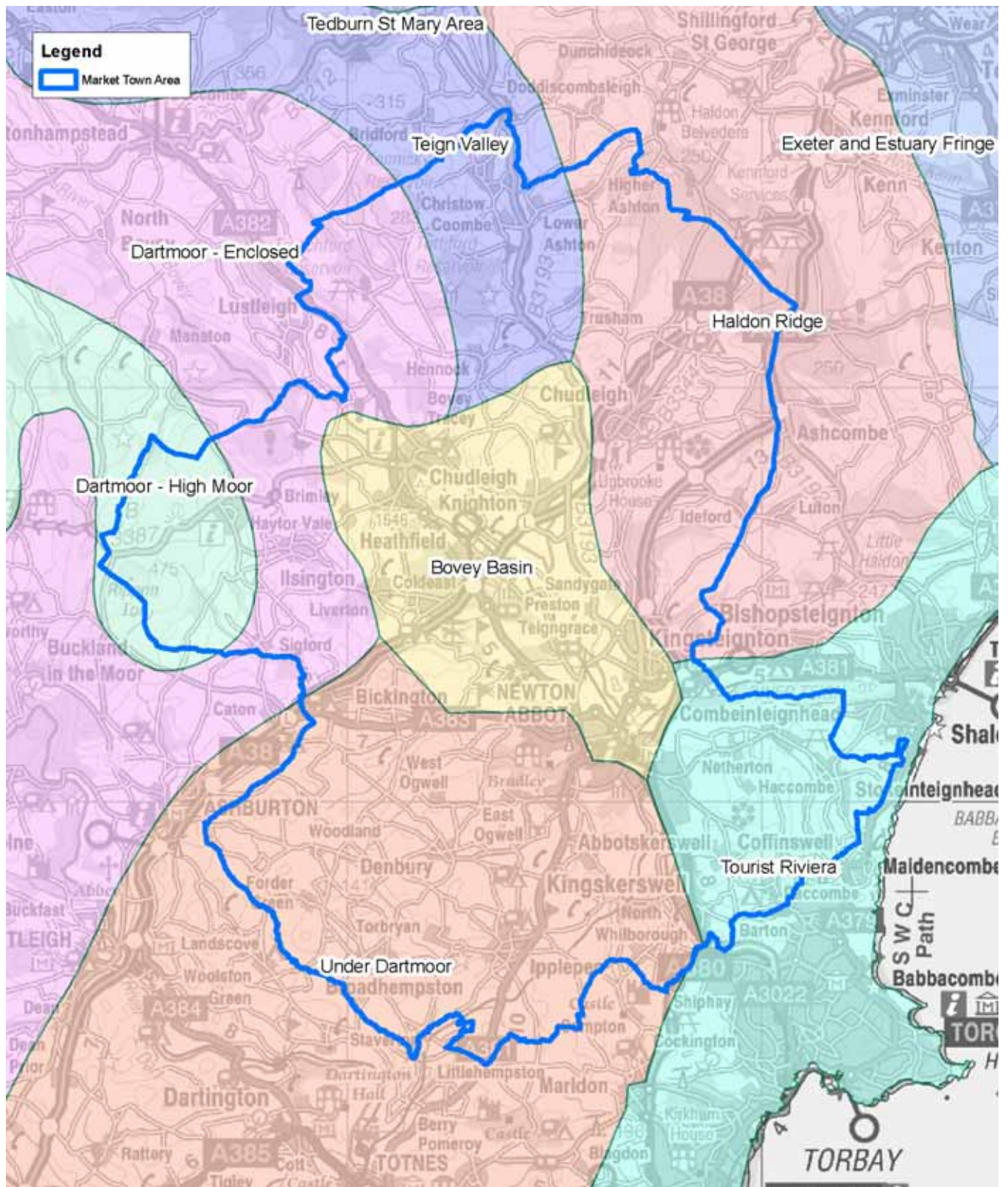
Location – Dartmoor is situated in the west-central part of Devon, west of Exeter and north east of Plymouth. The high moorland part of Dartmoor occupies the central part of Dartmoor. A very small part of this zone is included within the western extremity of the market town area.

Designations – The whole zone is within Dartmoor National Park, a landscape of national importance. The whole of this part of the market town area is within Dartmoor National Park.

Key Characteristic Features

- Extensive high moorland of blanket bog, heath and grass moor.
- Natural granite features providing characteristic landmarks.
- Archaeological features, remnants of quarrying and other extractive workings.
- Visual skyline element of many Devon landscapes.
- Broad, sweeping skylines punctuated by tors; panoramic views and wild "internal" vistas.
- Exposure to the elements.
- Recreational use.
- Ponies, cattle, sheep, walkers, cyclists, horse riders, kite flyers, paragliders, parked cars.

Landscape Character Zones within the market town area.



Crown Copyright. All rights reserved. Devon County Council. 100019783 2006

The Environment – Wildlife and Geology

Summary

The last 60 years have seen many dramatic changes within the English countryside, with increasing urbanisation and shifting patterns of agriculture. Devon has fared better than most, however, being protected by its remoteness and undulating terrain.

There remains much wildlife and geology to enjoy and conserve, and many opportunities exist throughout the County to enhance the natural environment. Landowners, industry and, of course, local communities all have the chance to contribute to the conservation of Devon's rich natural history.

Newton Abbot and the surrounding area really is a particularly interesting and diverse part of the County. The heaths and woodland of Dartmoor to the east, the lowland heaths of the Haldon Ridge and the Bovey Basin (which is also of great importance for its ponds and wetlands), the limestone grasslands and woodlands south of Newton Abbot, and the mudflats of the Teign Estuary combine to create a unique environment. All this within a backdrop of mixed farmland with extensive networks of hedges.

Not surprisingly, this range of habitats supports a great many species. To list just a few examples, the mixed farmland supports ciril buntings, a rare farmland bird now confined to south Devon, and the Haldon heaths support breeding nightjars. The ponds of the Bovey Basin are home to important populations of dragonflies. There are several notable roosts for the rare greater horseshoe bat and the mudflats of the estuary support waders and wildfowl.

Key sites

The table below contains information on the key features of some of the most important wildlife sites of this part of Devon. A map is also included to illustrate these.

Site name	Interest	Designation
South Dartmoor Woods	Extensive areas of ancient semi-natural oak woodland.	SAC, NNR (in part)
South Hams	Coastal site with maritime and calcareous grassland, scrub and cliff communities; woods and caves with palaeontological interest and bats; mines with important bat roosts.	SAC
Torbryan Caves	Devonian limestone caves with Pleistocene fossils. Some also act as bat roosts.	gSSSI
Aller Sand Pit	Type section for Aller Gravels.	gSSSI
River Lemon Valley Woods	Ancient semi-natural & broadleaved woodland & limestone cliff flora.	SSSI
Stover Country Park	Freshwater lake, reedbed, remnant heath, broadleaved & conifer plantation. Rich invertebrate fauna, particularly dragonflies.	SSSI
Bovey Heathfield	Dry heath, wet heath, alder carr and scrub.	SSSI
Brock's Farm	Unimproved neutral grassland.	SSSI
Ugbrooke Park	Important lichen communities.	SSSI
Chudleigh Caves and Woods	Ancient semi-natural woodland & broadleaved plantation on limestone. Lichen interest and palaeontological interest.	SSSI
Lower Dunscombe Farm Quarry	Devonian limestone.	gSSSI
Wolborough Fen	Tall herb vegetation, molinia mire, lowland bog, birch & willow scrub. Invertebrate & fungal interest.	SSSI
Crockham Quarry	Lower carboniferous greenstone.	gSSSI
Ryecroft Quarry	Lower carboniferous Ryecroft greenstone.	gSSSI
Haldon Forest	Heath & conifer plantation on a former heathland site. Bird & invertebrate interest.	SSSI
Great Haldon Heaths	Wet and dry heath with willow scrub.	SSSI
Chudleigh Knighton Heath	Wet and dry heath, lowland bog, ponds and scrub.	SSSI
Chipleigh Quarries	Upper Devonian submarine basaltic volcanism with pillow lavas.	gSSSI

Site name	Interest	Designation
Southacre Clay Pits	Exposures of lignite and clay sediments belonging to the Middle & Upper Bovey Formation.	gSSSI
Blackslade Mire	Mixed valley mire, with transition through wet heath to dry unimproved grassland.	SSSI
Haytor & Smallacombe Iron Mines	Mines important for mineralogy research. There is an important bat roost at Haytor Iron Mine.	SSSI
Haytor Rocks & Quarries	Exposures of two principal variants (the 'Giant' & 'Blue' varieties) of the coarse megacrystic biotite-granite of Dartmoor.	SSSI
Spara Bridge	A complete succession through the Devonian & Carboniferous rocks of the Teign Valley.	gSSSI
Yarner Wood & Trendlebere Down	One of the best remaining ancient oak woodlands in Devon. Trendlebere Down - to the north of Yarner Wood - contains a mosaic of heathland, grassland and valley mire vegetation.	SSSI
Hackney Marshes	Rich mosaic of marshy meadows, grassland, reedbeds and ponds	LNR
Decoy Country Park	Woodland, lake, ponds, streams and fen.	LNR
Aller Brook	A mosaic of very varied habitats, which support a very wide range of flora and fauna.	LNR
Stover	Woodland, heathland, grassland, lake and marsh and a substantial variety of wildlife.	LNR
Jetty Marsh	Mosaic of habitats, including large reedbeds. Important wildlife corridor.	LNR
Wharf Road Sidings	Mixture of reedbeds, grassland, scrub and tidal waters fringed by mudflats. The site is important for its wildlife.	LNR
Churchills	Grassland with a great diversity of wildflowers and butterflies.	LNR

Key:

Special Areas of Conservation (SAC): these sites are notified because they contain species and/or habitats of European importance (listed in the Habitats Directive 1994). SAC is a statutory designation with legal implications.

National Nature Reserves (NNR): these sites are the jewels in the crown of UK nature conservation. They are all among the very best examples of a particular habitat or have important populations of rare species. NNR is a statutory designation with legal implications.

Sites of Special Scientific Interest (SSSI): these sites are notified because of their national importance for wildlife or geological features (gSSSI, above). SSSI is a statutory designation with legal implications. SSSI status does not confer any right of access to the public.

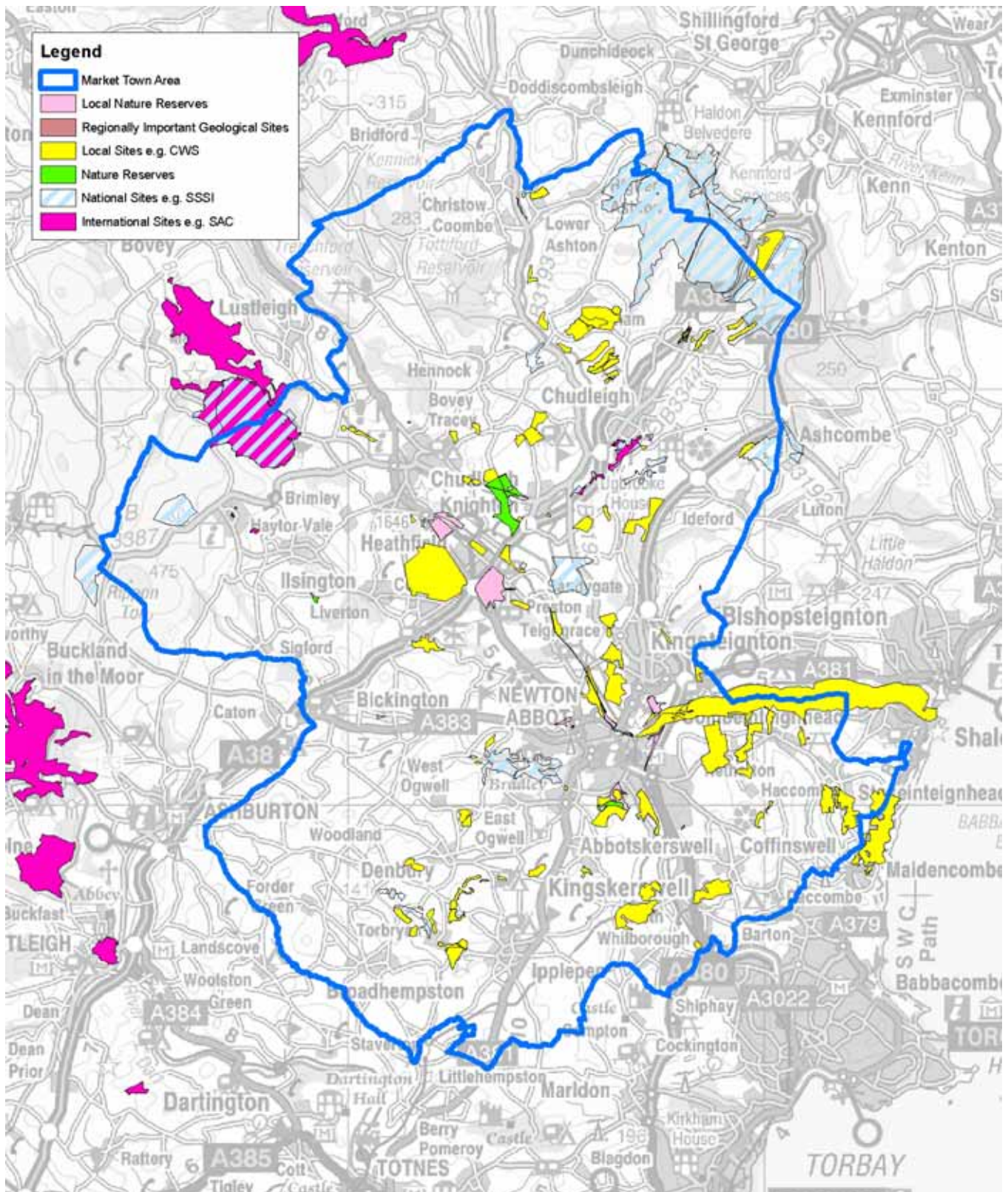
Local Nature Reserves (LNR): these are places with local wildlife or geological interest which offer good opportunities for learning about nature or simply enjoying it. LNR is a statutory designation made by local authorities.

County Wildlife Sites (CWS): these are sites of county importance for wildlife. CWS is not a statutory designation and does not have any legal status, though CWSs are usually included in district planning documents. CWS recognition places no formal obligation on the landowner, but may increase eligibility for land management grants.

The South Dartmoor Woods SAC referred to above consists of several SSSIs including, in this area, Yarner Wood & Trendlebere Down. Similarly, the South Hams SAC includes Chudleigh Caves and Woods, and Haytor & Smallacombe Iron Mines.

In addition to the above table, the Newton Abbot and Kingsteignton market town area includes 94 County Wildlife Sites and County Geological Sites (also known as RIGS). These mainly represent a variety of habitats including unimproved grassland, ancient woodland, wetlands and areas important for farmland birds. There are also a number of interesting geological features represented.

Key sites within the market town area



Crown Copyright. All rights reserved. Devon County Council. 100019783 2006