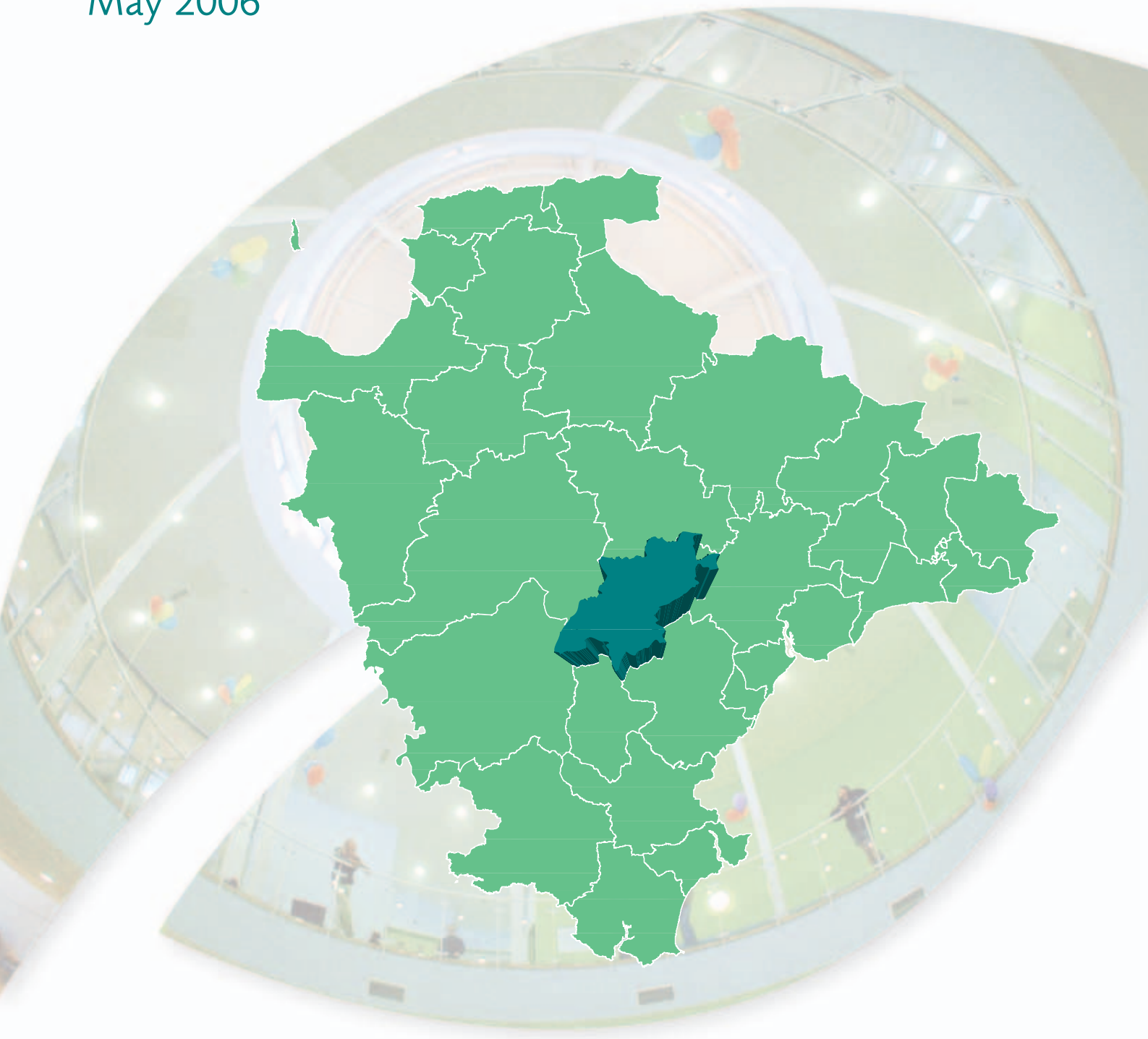


# Moretonhampstead

## Devon Town Baseline Profile

May 2006

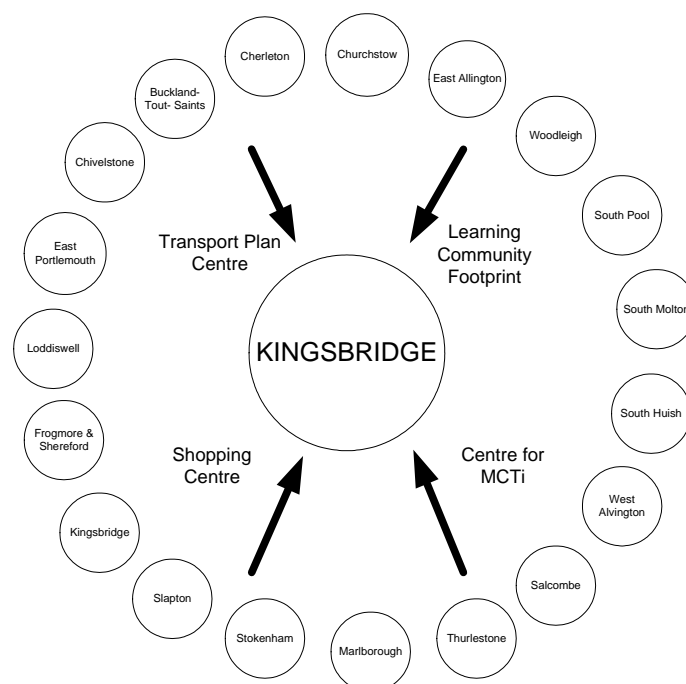


# Identifying Devon Towns

The main factor that decides a town's hinterland is provision of services; the place that the hinterland looks to in order to provide the things it needs to survive. In order to identify the 28 Devon Towns, analysis of the following services and other relevant factors have been taken into account:

- Local Travel Plans – which are based on public consultation and map local travel patterns, the majority of which are short ones in and around local communities as part of people's daily lives.
- Shopping catchment areas – which are the service most frequently accessed by people.
- Learning Community catchment areas – which have a major influence on where people look to for services. Learning Community catchments do not always follow district or even county boundaries, but are based on a collection of feeder primary schools.
- Market and Coastal Towns Initiative areas - The Market and Coastal Towns Initiative was started after recognition that the health of a market town is vital to the well being of its hinterland, and that many of Devon's market towns were in need of regeneration. It is a Central Government initiative, administered by the RDAs. Over half of Devon is included in the Market and Coastal Towns Initiative.
- Parishes - The boundary definitions are shown in terms of parishes, as they are traditionally the smallest area used for 'clustering'.

The diagram below is an illustration of how this works for one Devon Town: Kingsbridge.



Exeter also provides a similar or related "market town" function as well as being a sub regional centre with a larger sphere of influence.

## Foreword

In Devon, we want a county for everyone.

We want all to share in our economic prosperity, to have access to the best possible public services and to enjoy a good quality of life.

Our county is made up of many small and scattered communities built around larger market and coastal towns and the vibrant city of Exeter.

To make sure that the County Council and other agencies provide a good service to all these diverse communities and can meet their future needs, we need to fully understand and take into account the local situation and any local issues.

We call this initiative “Connecting with Communities” and it is a key part of our Strategic Plan for the future of Devon.

To help, we have produced a local profile of each of the key market and coastal towns in Devon and their surrounding area.

Based on key facts and figures, these profiles are just a starting point for local discussion about the real needs and priorities of each of our communities.

I hope you find this information useful and that it proves an invaluable resource in all future local planning.

Councillor Des Hannon  
Executive Support Member for Improvement and Customer Service  
Devon County Council



---

## Introduction

This profile, one of 29 covering the area of Devon County Council, has been generated by the County Council's Corporate Information Service and is an important resource contribution to local community planning work.

Each profile provides a statistical overview, based on a series of facts and figures, of what life is like in each "Devon town" area. The profile contains a baseline of information and is intended to provide the basis for further discussion and development within the County Council and with partners.

In light of these discussions the profile can grow into a more rounded picture describing "how things are" for each area, as well as to set out the likely future actions that will be needed to redress any gaps in service or unmet needs.

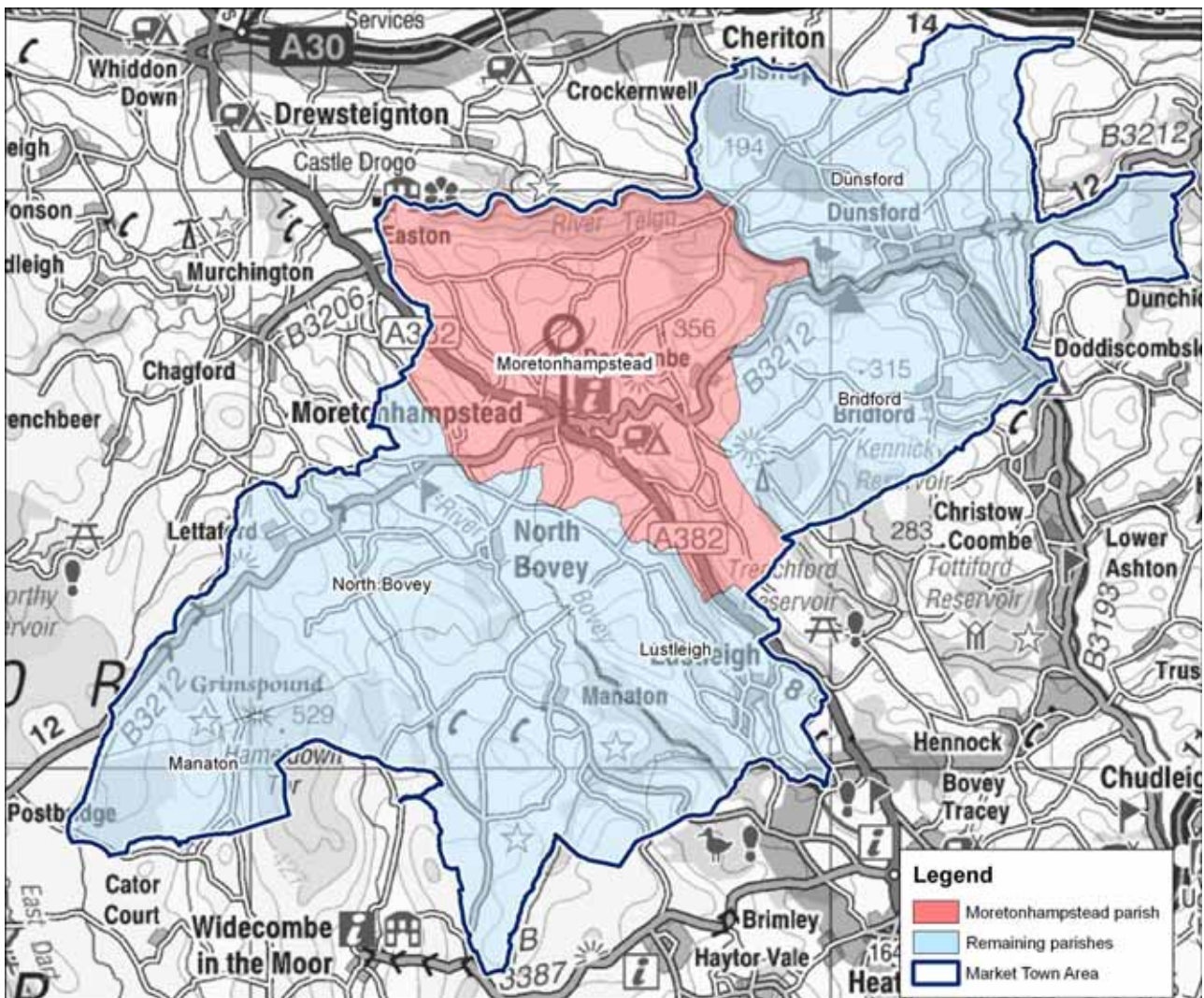
The profile is structured around a series of themes to cover social, economic and environmental well being. This is a starting point in producing profiles about our "Devon town" areas in which considerable effort has been made to provide a comprehensive series of data. Further data will be added to subsequent editions as they become available to provide a more complete picture and monitor trends.

The profiles are available on the County Council website – [www.devon.gov.uk/devontownprofiles](http://www.devon.gov.uk/devontownprofiles)

## Area definition

Market town areas have been defined as aggregations of parishes. The following six parishes make up the Moretonhampstead market town area:

Bridford                      Dunsford                      Lustleigh                      Manaton                      Moretonhampstead  
 North Bovey



Crown Copyright. All rights reserved. Devon County Council. 100019783 2006

As much of the data included in this profile is produced at a ward level, a 'best-fit' of wards is also used. Wards are included in one market town area if more than 60% of the population of that ward live within the market town boundary. If between 40% and 60% of a ward's population falls within a market town area it will be included, but may also be included in another area.

The wards that comprise the market town area in this profile are as follows:

Moorland                      Teign Valley

Moorland ward was included because 80% of the population of the ward live in market town area. Teign Valley was included because 45% of its population live in the area although this ward is also included in the Newton Abbot profile. As only 8% of the population of the ward of Bovey ward falls within this market town it is not included in this profile but in Newton Abbot's instead.

Each market town area is comprised of a centre (coloured red) and its surrounding hinterland (referred to as the "Remaining parishes" throughout this document). The centre for this profile is considered to be the parish of Moretonhampstead but there is no equivalent for ward data that can be applied.

Some national datasets are released using a new geographic hierarchy – Super Output Areas. The lowest level – Lower Super Output Areas (or LSOAs) – is about one third the size of a ward. These are aggregated to form Middle Super Output Areas (MSOAs). Where data are only available at Super Output Area a best-fit approach has been adopted. There are five LSOAs that fall either fully or partially inside the market town area, one of which

---

form Moretonhampstead parish and the rest the remaining parishes. There is one MSOA in the market town area, which can be used to calculate just a total market town area figure.

Additional information has been included to provide some comparisons. All tables have data for the Teignbridge district and the area administered by Devon County Council – where reference is made to the county of Devon this refers to the area covered by Devon County Council, which does not include Plymouth or Torbay. Where possible data are also included at a national level, either for England or England & Wales.

## Contents

Population.....	8
Percentage of population by age band (2004).....	8
Population change (1991 to 2004).....	8
Ethnicity (2001).....	9
Household composition (2001).....	9
Deprivation.....	10
Comparison of IMD 2000 and ID 2004.....	10
Map of Index of Deprivation 2004.....	11
The Local Economy.....	12
Unemployment as a proportion of working age resident population (April 2005).....	12
Economic activity (2001).....	13
Income Support and Job Seekers Allowance claim rates (2004).....	13
Employment of people living in the area by industry (2001).....	15
Percentage of businesses in profile area by Standard Industrial Classification (2004).....	16
Skills and Learning.....	17
Number and percentage of pupils achieving at least Key Stage 2 Level 4 (2004).....	17
GCSE attainment (2002/03).....	17
Highest level of qualification (2001).....	18
Health, Care and Wellbeing.....	19
Incapacity Benefit & Severe Disablement Allowance and Disability Living Allowance claimant rates (2004).....	19
Percentage of people living with a limiting long-term illness (2001).....	20
General Health (2001).....	20
Older People.....	21
Percentage of lone pensioner households (2001).....	21
Number of Social Services clients per 1,000 population (2004).....	21
Children and Young People.....	22
Children in need aged 0 to 17 years per 1,000 population aged 0 to 17 years (2003/04).....	22
Young offenders aged 10 to 17 years per 1,000 population aged 10 to 17 years (2000 to 2002).....	22
Community Safety.....	23
Total crime per 1,000 population (2004/05).....	23
Vehicle crime per 1,000 population (2004/05).....	24
Violent crime per 1,000 population (2004/05).....	24
Drug offences per 1,000 population (2004/05).....	25
Dwelling burglaries per 1,000 population (2004/05).....	25
Housing.....	26
House price change (2001 to 2005).....	26
Average house price (2004).....	26
Percentage of dwellings by tenure (2001).....	27
Transport.....	28
Car ownership (2001).....	28
Mode of travel to work (2001).....	29
Accessibility by public transport (2005).....	29
The Environment – Landscape.....	30
Landscape character.....	30
Landscape Character Zones within the market town area.....	31
The Environment – Wildlife and Geology.....	33
Key sites.....	33

This profile makes use of data from the 1991 and 2001 Censuses. All such data is acknowledged as Crown Copyright.

# Population

## Summary

The structure of the population is broadly similar to that across the district and the county in the under 24 age bands. Above that in the remaining parishes there is a slightly higher proportion of the older working age (45-64) and the 65-74 range and Moretonhampstead parish has a high number of 75 and overs.

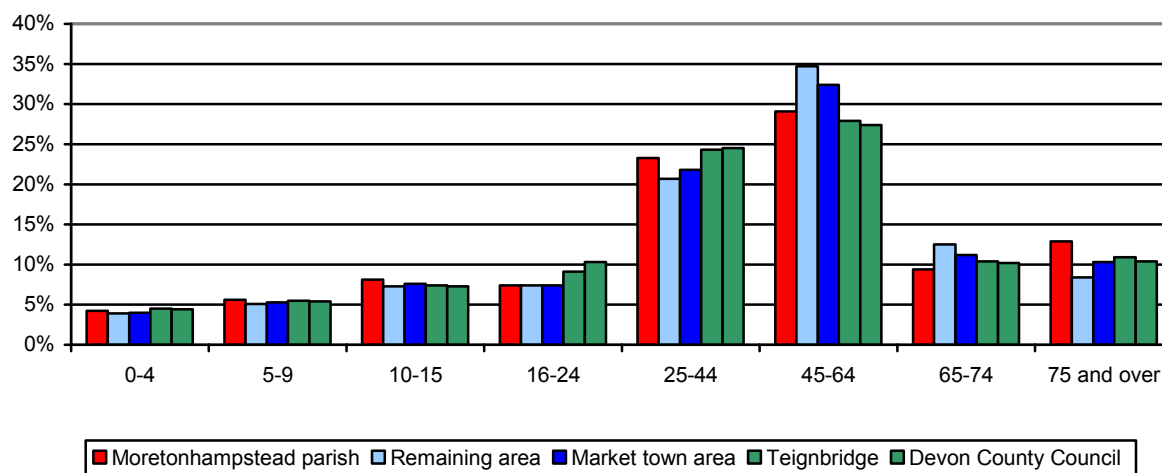
There has been significant population growth since 1991 in Moretonhampstead parish but very little in the remaining parishes.

The proportion of people from minority ethnic groups in the market town area is comparatively low.

The level of households occupied by individuals in Moretonhampstead parish is similar to its comparative district as well as the county and national figure.

## Percentage of population by age band (2004)

Area	Total population	Age band							
		0-4	5-9	10-15	16-24	25-44	45-64	65-74	75 and over
Moretonhampstead parish	1,721	4.2%	5.6%	8.1%	7.4%	23.3%	29.1%	9.4%	12.9%
Remaining parishes	2,408	3.9%	5.1%	7.3%	7.4%	20.7%	34.7%	12.5%	8.4%
Market town area	4,129	4.0%	5.3%	7.6%	7.4%	21.8%	32.4%	11.2%	10.3%
Teignbridge	126,758	4.5%	5.5%	7.4%	9.1%	24.3%	27.9%	10.4%	10.9%
Devon County Council	742,911	4.4%	5.4%	7.3%	10.3%	24.5%	27.4%	10.2%	10.4%



Source: South Devon Health Informatics Service (FHSA data)

## Population change (1991 to 2004)

Area	1991	2001	2004	% change 1991 to 2004
Moretonhampstead parish	1,383	1,537	1,721	24.4%
Remaining parishes	2,370	2,414	2,408	1.6%
Market town area	3,753	3,951	4,129	10.0%
Teignbridge	108,258	120,958	126,758	17.1%
Devon County Council	646,903	704,493	742,911	14.8%

Source: 1991 and 2001 Census, 2004 South Devon Health Informatics Service (FHSA data)

**Ethnicity (2001)**

Area	Ethnic Group				
	All People	White	% White	Black and minority ethnic	% Black and minority ethnic
Moretonhampstead parish	1,537	1,524	99.2%	13	0.8%
Remaining parishes	2,414	2,405	99.6%	9	0.4%
Market town area	3,951	3,929	99.4%	22	0.6%
Teignbridge	120,958	119,742	99.0%	1,216	1.0%
Devon County Council	704,493	696,590	98.9%	7,903	1.1%
England	49,138,831	44,679,361	90.9%	4,459,470	9.1%

Source: 2001 Census

**Household composition (2001)**

Area	All households	Single person households		Households comprising more than one person	
		Number	%	Number	%
Moretonhampstead parish	656	196	29.9%	460	70.1%
Remaining parishes	1,043	261	25.0%	782	75.0%
Market town area	1,699	457	26.9%	1,242	73.1%
Teignbridge	51,417	14,940	29.1%	36,477	70.9%
Devon County Council	298,574	86,890	29.1%	211,684	70.9%
England	20,451,427	6,150,264	30.1%	14,301,163	69.9%

Source: 2001 Census

# Deprivation

## Summary

No Lower Super Output Areas (LSOA) are ranked in the most deprived 25% nationally, or even 50%, but all five LSOAs are ranked in the next 50-75% category.

The principal source of deprivation data is currently The Indices of Deprivation 2004. This is a Lower Super Output Area (LSOA) level measure of multiple deprivation and is made up of seven domains. A LSOA is an area of about 1,500 people and has been devised to standardise statistical geography across the country. The seven domains are:

- Income Deprivation
- Employment Deprivation
- Health Deprivation and Disability
- Education, Skills and Training Deprivation
- Barriers to Housing and Services
- Living Environment Deprivation
- Crime

There are two supplementary Indices (Income Deprivation Affecting Children and Income Deprivation Affecting Older People).

The model which underpins the Index of Deprivation 2004 is based on the idea of distinct dimensions of deprivation which can be recognised and measured separately. These are experienced by individuals living in an area. Where possible, the indicators relate to 2001.

The information will help target policies and funding, reinforcing the Government's drive to improve the quality of life in disadvantaged communities.

There are over 32,000 LSOAs in the 2004 index, replacing the 8,500 wards used to construct the Index of Multiple Deprivation 2000. The LSOA boundaries were determined nationally with no local input.

The 2004 index was developed from academic research undertaken by Oxford University.

The table below compares the areas in Devon ranked in the most deprived 25% nationally, in terms of the number of wards in 2000 and the number of LSOAs in 2004, together with the population of these areas.

## Comparison of IMD 2000 and ID 2004

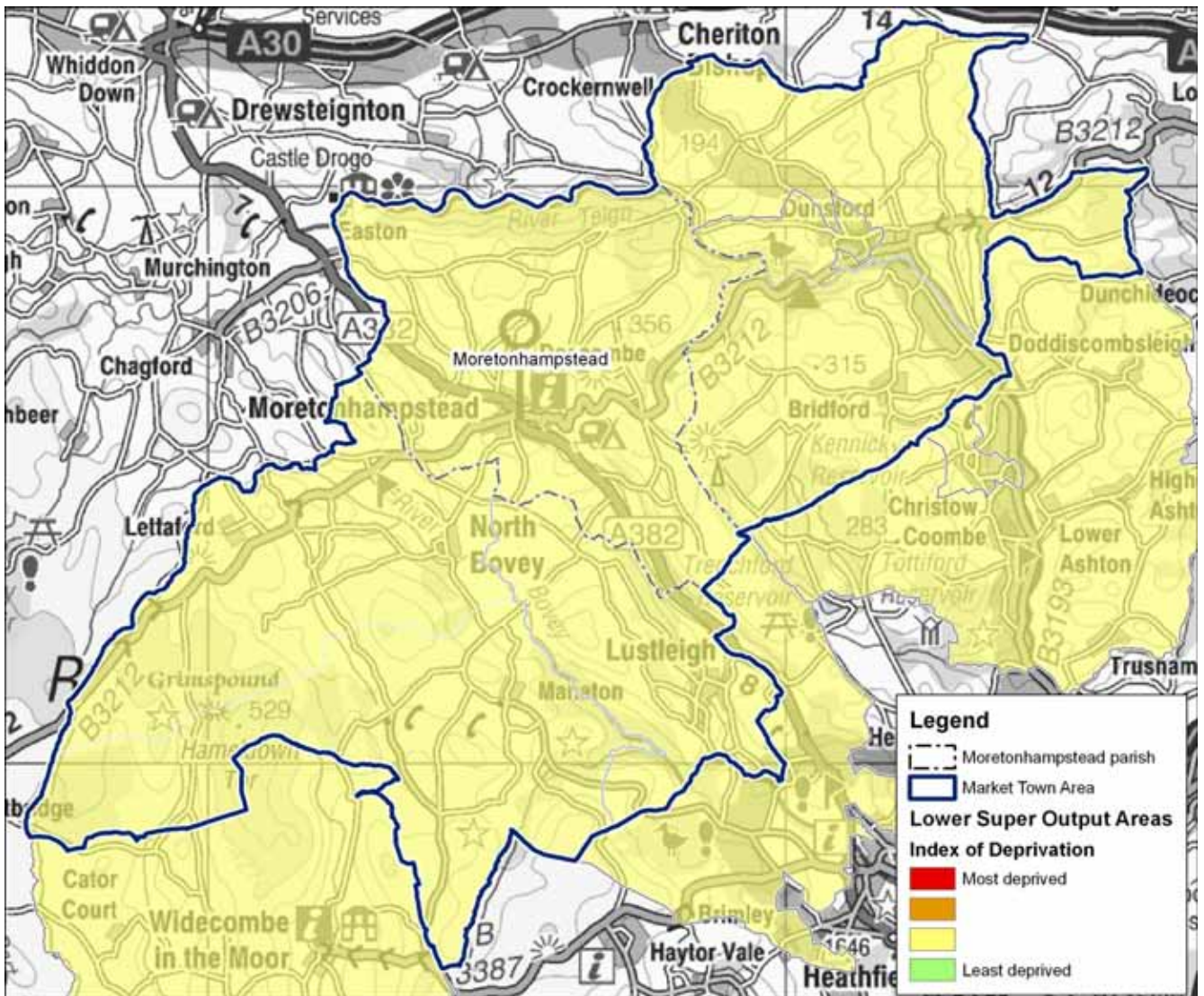
Area	IMD 2000		ID 2004	
	Number of wards	Population	Number of LSOAs	Population
East Devon	1	3,901	0	0
Exeter	3	17,070	14	22,057
Mid Devon	0	0	1	1,652
North Devon	6	21,409	10	14,158
South Hams	1	5,458	0	0
Teignbridge	6	24,408	6	8,918
Torridge	10	22,217	3	5,731
West Devon	1	1,483	0	0
Devon County Council	28	95,946	34	52,516

Source: Office of the Deputy Prime Minister and South Devon Health Informatics Service (FHSA data)

Application of the new index reduces the population in Devon perceived to be living in the most deprived areas by around 45%. This is probably due to the addition of crime and the living environment to the index, which in both cases the area covered by Devon County Council would have scored well compared to the national average. The reduced weighting given to the access to services domain may also be a contributing factor.

There are 5 LSOAs that fall either completely or partially within the area covered by this profile. None of these is classified as being in the most deprived 50% of LSOAs nationally and they are all in the next category 50-75%.

Map of Index of Deprivation 2004



Crown Copyright. All rights reserved. Devon County Council. 100019783 2006

Source: Office of the Deputy Prime Minister

# The Local Economy

## Summary

Unemployment levels are fairly low in the area.

Economic activity rates as a whole within the market town area are about average compared to the county and national averages. Self-employment levels in the area are higher than the county and national averages and may well reflect those involved in farming and tourism.

Claim rates for Income Support are overall quite low and claim rates for Job Seekers Allowance follow a similar trend.

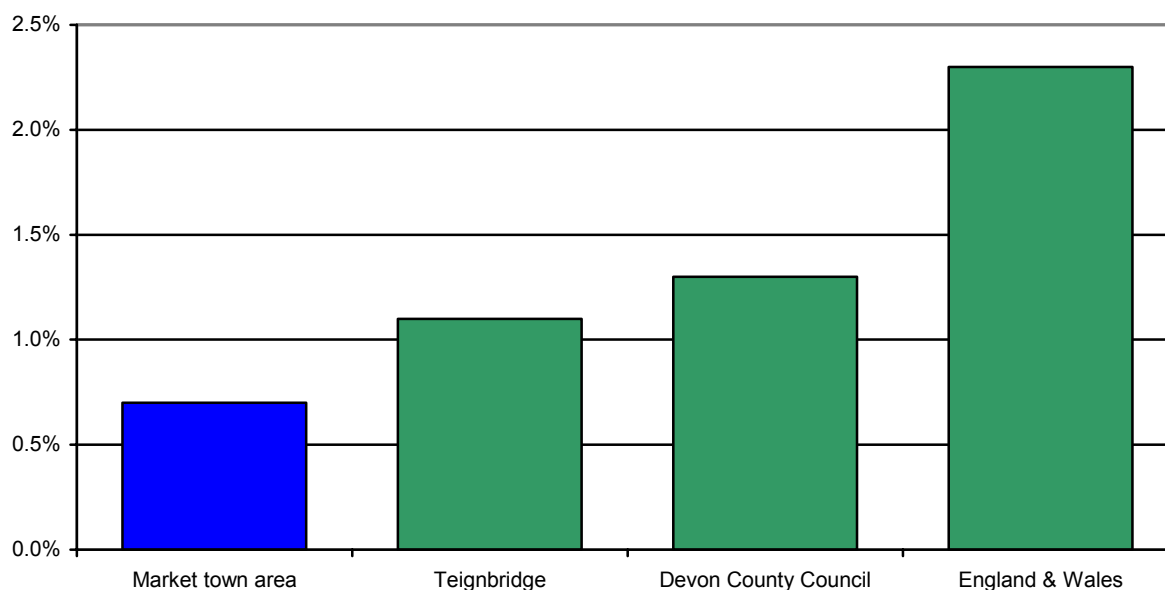
The percentage of households with an annual income of less than £20,000 is quite low in the market town area compared to the district and county averages.

The percentage of employment by industry sector of those living in the market town area highlights the main sectors of employment as wholesale & retail trade, health and social work and real estate etc. This represents just under 40% of employment in the market town area.

The largest numbers of businesses in the market town area are involved in hotels and restaurants, wholesale & retail trade and education and with over 50% of businesses involved in these sectors.

## Unemployment as a proportion of working age resident population (April 2005)

Area	Number unemployed	% working age population
Market town area	23	0.7%
Teignbridge	787	1.1%
Devon County Council	5,445	1.3%
England & Wales	752,758	2.3%



Source: Office for National Statistics

Note: Not possible to differentiate between town and rural area for Moretonhampstead area

**Economic activity (2001)**

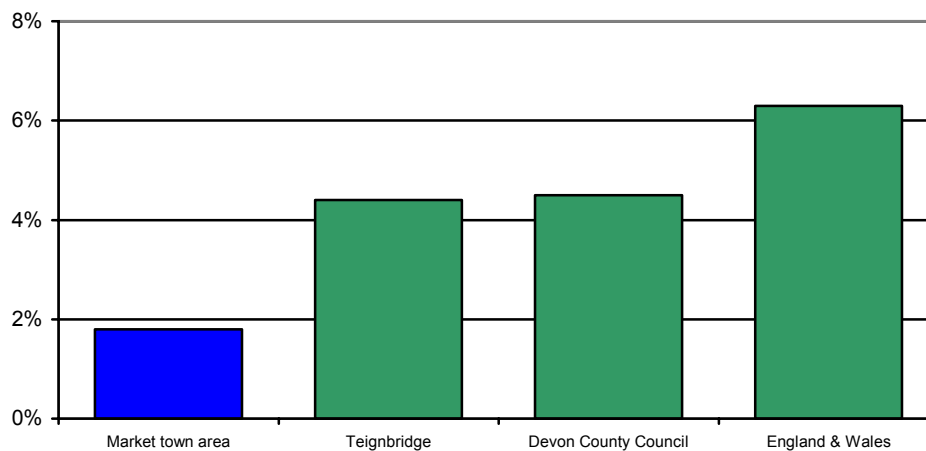
Area	People aged 16 to 74	Total economically active	Economically active	Employed part-time	Employed full-time	Self-employed	Unemployed	Students
Moretonhampstead parish	1,055	683	64.7%	20.6%	42.0%	31.3%	3.2%	2.8%
Remaining parishes	1,799	1,214	67.5%	15.8%	40.4%	37.5%	3.0%	3.3%
Market town area	2,854	1,897	66.5%	17.6%	41.0%	35.3%	3.1%	3.1%
Teignbridge	85,036	55,375	65.1%	20.9%	54.1%	18.1%	3.5%	3.3%
Devon County Council	503,212	328,379	65.3%	20.5%	52.6%	19.3%	3.9%	3.6%
England	35,532,091	23,756,707	66.9%	17.7%	61.0%	12.4%	5.0%	3.9%

Source: 2001 Census

The data below relating to Income Support and Job Seekers Allowance are based on a best fit of Middle Super Output Areas (MSOAs). One MSOA forms a best fit for the market town area.

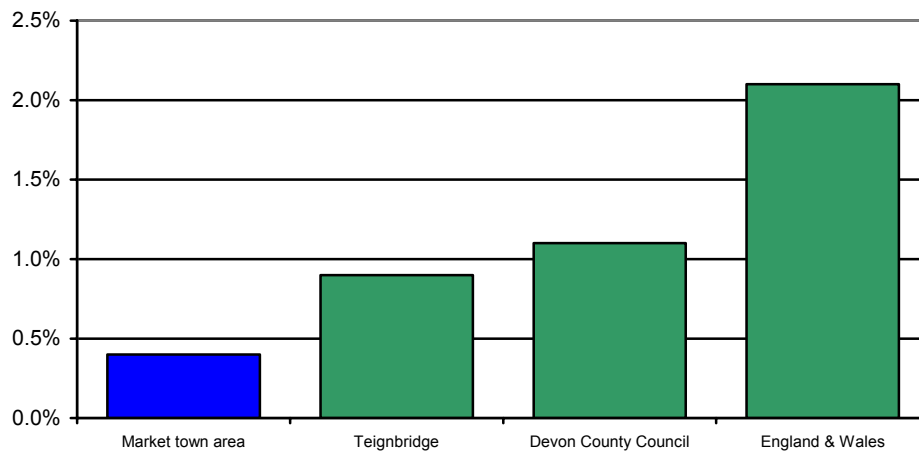
**Income Support and Job Seekers Allowance claim rates (2004)**

Area	Income Support			Jobseekers Allowance		
	Population aged 16 to 59	All claimants	Claim rate	Population aged 16 to 64	All claimants	Claim rate
Market town area	2,986	55	1.8%	3,352	15	0.4%
Teignbridge	65,146	2,860	4.4%	71,993	670	0.9%
Devon County Council	388,926	17,530	4.5%	429,574	4,765	1.1%
England	30,694,973	1,946,020	6.3%	33,239,665	689,810	2.1%

**Income Support claim rates (2004)**

Source: Department for Work and Pensions

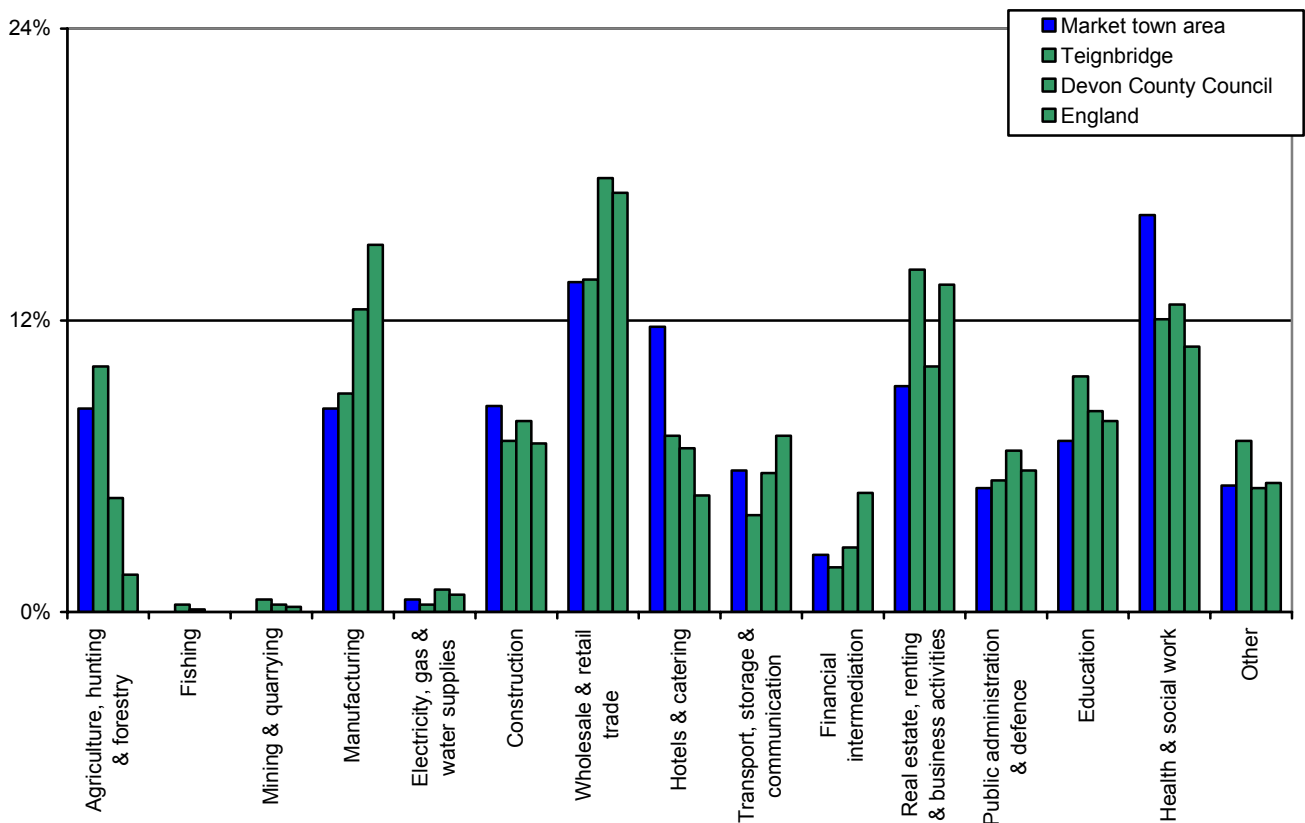
## Job Seeker Allowance claim rates (2004)



Source: Department for Work and Pensions

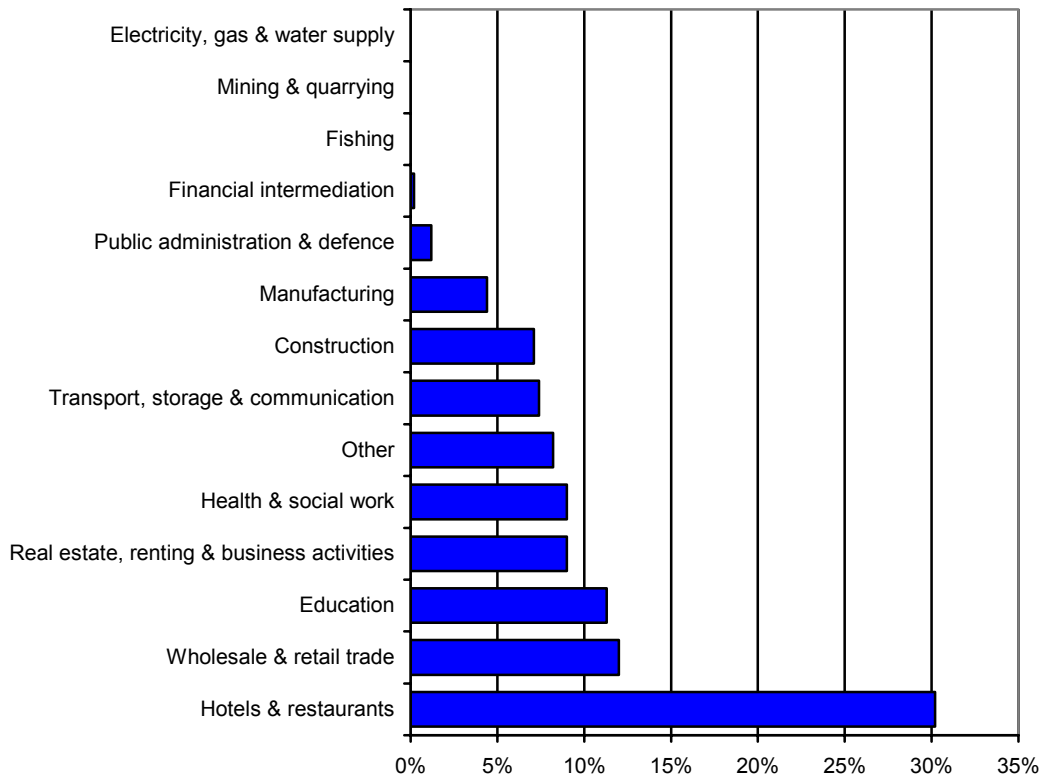
## Employment of people living in the area by industry (2001)

Sector	Moretonhampstead parish	Remaining parishes	Market town area	Teignbridge	Devon County Council	England
Agriculture, hunting & forestry	8.2%	9.9%	9.2%	2.7%	4.6%	1.5%
Fishing	0.0%	0.3%	0.2%	0.1%	0.1%	0.0%
Mining & quarrying	0.0%	0.5%	0.3%	0.8%	0.3%	0.2%
Manufacturing	8.2%	8.8%	8.5%	11.1%	12.2%	14.8%
Electricity, gas & water supplies	0.5%	0.3%	0.3%	0.8%	0.9%	0.7%
Construction	8.3%	6.9%	7.4%	8.3%	7.7%	6.8%
Wholesale & retail trade	13.3%	13.4%	13.4%	18.6%	17.5%	16.9%
Hotels & catering	11.5%	7.1%	8.6%	6.1%	6.6%	4.7%
Transport, storage & communication	5.7%	3.9%	4.6%	5.4%	5.6%	7.1%
Financial intermediation	2.3%	1.8%	2.0%	2.5%	2.6%	4.8%
Real estate, renting & business activities	9.1%	13.8%	12.1%	10.2%	9.9%	13.2%
Public administration & defence	5.0%	5.3%	5.2%	6.3%	6.5%	5.7%
Education	6.9%	9.5%	8.6%	8.0%	8.1%	7.7%
Health & social work	16.0%	11.8%	13.3%	14.2%	12.4%	10.7%
Other	5.1%	6.9%	6.3%	4.9%	5.0%	5.2%



Source: 2001 Census

**Percentage of businesses in profile area by Standard Industrial Classification (2004)**



Source: Annual Business Inquiry

## Skills and Learning

### Summary

Children living in Moretonhampstead market town area achieve mixed results at Key Stage 2. Results in English and Science were above the national average, whilst Maths was below.

Achievement rates for GCSEs at grades A\* to C reveals a contrast between students from Moretonhampstead parish (42%) and those from the remaining parishes (94%).

The overall level of qualification within the market town area is quite different to the district and county averages. There are low numbers with no qualifications and level 1 but high numbers with level 4.

### Number and percentage of pupils achieving at least Key Stage 2 Level 4 (2004)

Area	Total pupils	English		Maths		Science	
		Number	% pupils	Number	% pupils	Number	% pupils
Moretonhampstead parish	26	19	73.1%	19	73.1%	24	92.3%
Remaining parishes	13	11	84.6%	8	61.5%	13	100.0%
Market town area	39	30	76.9%	27	69.2%	37	94.9%
Teignbridge	1,254	955	76.2%	906	72.2%	1,094	87.2%
Devon County Council	7,781	6,030	77.5%	5,766	74.1%	6,803	87.4%
England			75.0%		73.0%		86.0%

Source: Children and Young People's Services, Devon County Council

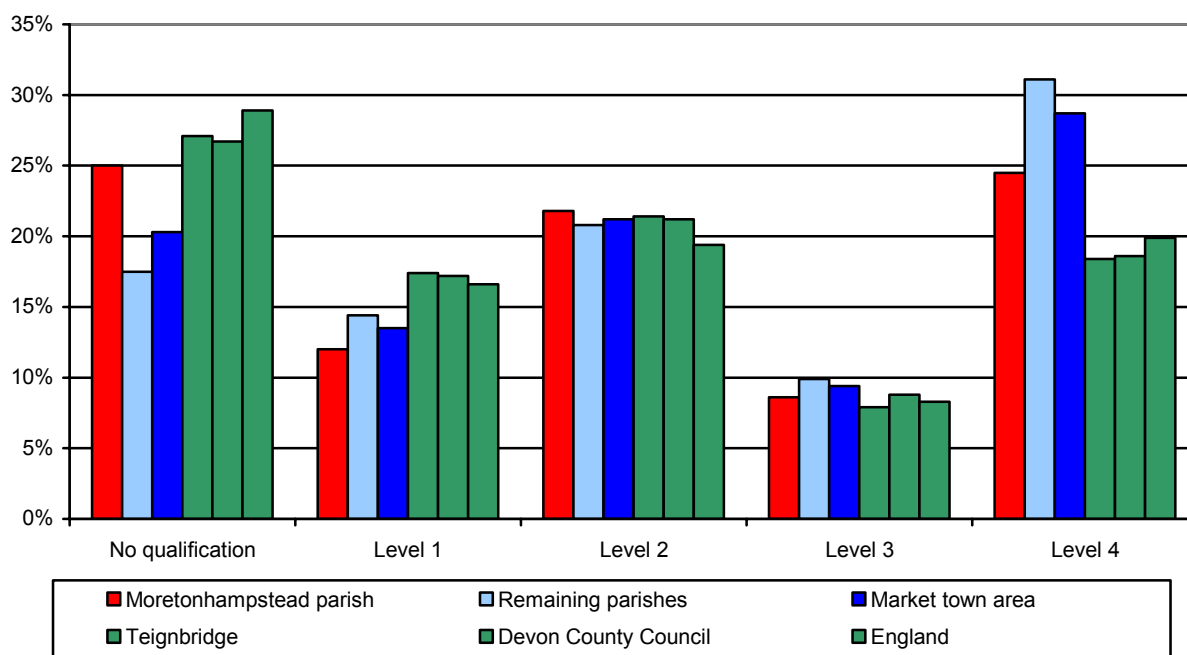
### GCSE attainment (2002/03)

Area	Number of students	Students achieving five or more A*-C	% students achieving five or more A*-C	Students achieving five or more A*-G	% students achieving five or more A*-G
Moretonhampstead parish	12	5	41.7%	12	100.0%
Remaining parishes	16	15	93.8%	16	100.0%
Market town area	28	20	71.4%	28	100.0%
Teignbridge	1,115	578	51.8%	1,051	94.3%
Devon County Council	6,955	3,741	52.6%	6,484	90.6%
England			52.9%		88.8%

Source: Children and Young People's Services, Devon County Council

## Highest level of qualification (2001)

Area	No qualifications	Level 1	Level 2	Level 3	Level 4	Other
Moretonhampstead parish	25.0%	12.0%	21.8%	8.6%	24.5%	8.0%
Remaining parishes	17.5%	14.4%	20.8%	9.9%	31.1%	6.3%
Market town area	20.3%	13.5%	21.2%	9.4%	28.7%	6.9%
Teignbridge	27.1%	17.4%	21.4%	7.9%	18.4%	7.9%
Devon County Council	26.7%	17.2%	21.2%	8.8%	18.6%	7.6%
England	28.9%	16.6%	19.4%	8.3%	19.9%	6.9%



Source: 2001 Census

### Note:

Level 1: 1+'O' level passes, 1 CSE/GCSE any grades, NVQ level 1, Foundation GNVQ.

Level 2: 5+'O' level passes, 5+CSE's (grade A-C), School Certificate, 1+'A' levels/'AS' levels, NVQ level 2, Intermediate GNVQ.

Level 3: 2+ 'A' levels, 4+'AS' levels, Higher School Certificate, NVQ level 3, Advanced GNVQ.

Level 4: First degree, Higher degree, NVQ levels 4 and 5, HNC, HND, Qualified Teacher Status, Qualified, Medical Doctor, Qualified Dentist, Qualified Nurse, Midwife, Health Visitor.

## Health, Care and Wellbeing

### Summary

Incapacity Benefit and Severe Disablement Allowance claim rates are well below all three comparisons in the Moretonhampstead market town area as are claim rates for Disability Living Allowance.

Overall the rate of people living with a limiting long-term illness is below the three comparatives. The same trend follows for the general health indicator.

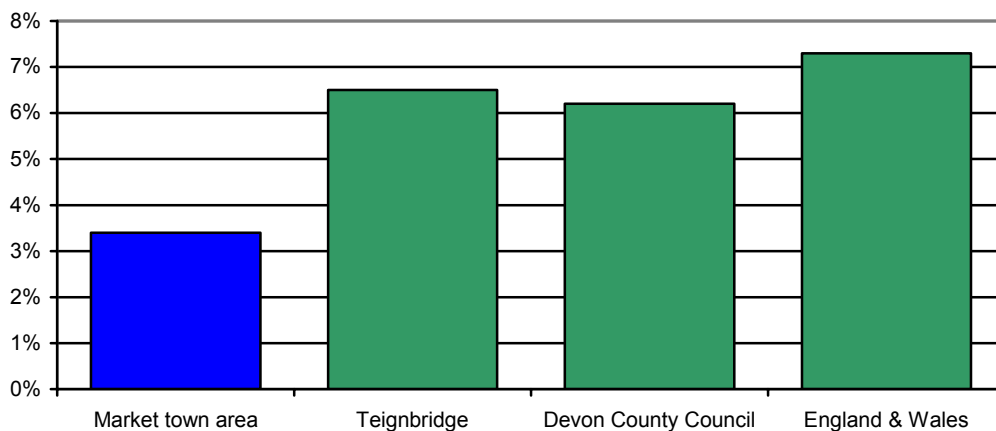
The data below relating to Income Support and Job Seekers Allowance are based on a best fit of Middle Super Output Areas (MSOAs). One MSOA forms a best fit for the market town area.

### Incapacity Benefit & Severe Disablement Allowance and Disability Living Allowance claimant rates (2004)

Area	Incapacity Benefit & Severe Disablement Allowance			Disability Living Allowance		
	Population aged 16 to 64	All claimants	Claim rate	Total population	All claimants	Claim rate
Market Town Area	3,352	115	3.4%	5,611	105	1.9%
Teignbridge	71,993	4,690	6.5%	120,913	4,645	3.8%
Devon County Council	429,574	26,670	6.2%	704,510	25,645	3.6%
England & Wales	33,239,665	2,421,940	7.3%	52,042,019	2,341,615	4.5%

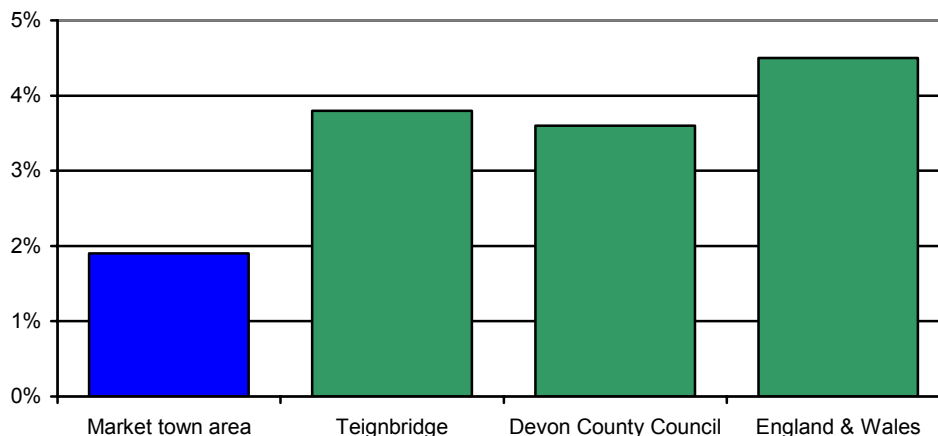
Source: Department for Work and Pensions

### Incapacity Benefit and Severe Disablement Allowance claimant rates (2004)



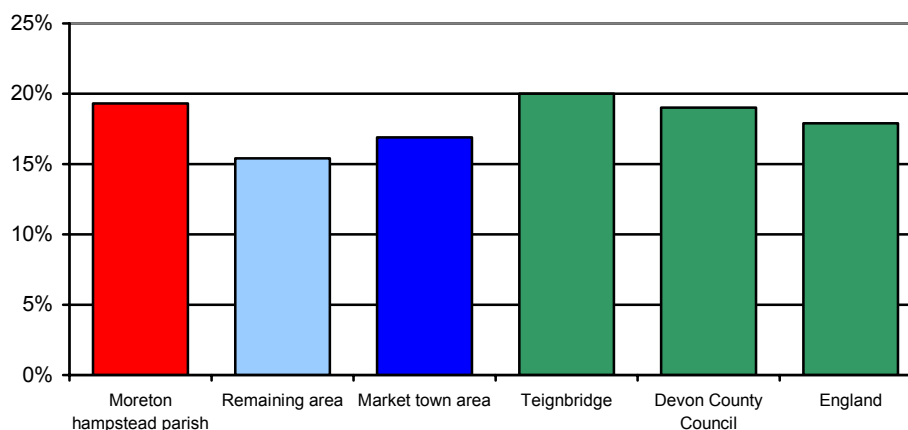
Source: Department for Work and Pensions

### Disability Living Allowance claimant rates (2004)



**Percentage of people living with a limiting long-term illness (2001)**

Area	All people	People living with a limiting long-term illness	% people living with a limiting long-term illness
Moretonhampstead parish	1,536	296	19.3%
Remaining parishes	2,412	371	15.4%
Market town area	3,948	667	16.9%
Teignbridge	120,958	24,185	20.0%
Devon County Council	704,493	133,756	19.0%
England	49,138,831	8,809,194	17.9%



Source: 2001 Census

**General Health (2001)**

Area	All People	People describing their health as good or fairly good		People describing their health as not good	
		Number	%	Number	%
Moretonhampstead parish	1,536	1,380	89.8%	156	10.2%
Remaining parishes	2,412	2,270	94.1%	142	5.9%
Market town area	3,948	3,650	92.5%	298	7.5%
Teignbridge	120,958	110,059	91.0%	10,899	9.0%
Devon County Council	704,493	643,988	91.4%	60,505	8.6%
England	49,138,831	44,702,955	91.0%	4,435,876	9.0%

Source: 2001 Census

## Older People

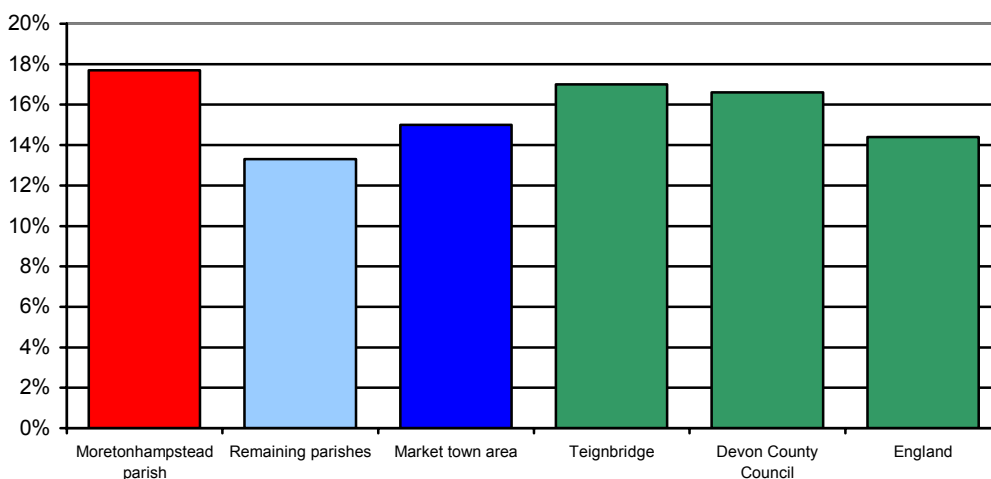
### Summary

Around 18% of households in Moretonhampstead are occupied by lone pensioner households, this is above the district, county and national averages.

The rate of Social Service clients in the market town area is below the district and county average in all age groups bar the 85 and over.

### Percentage of lone pensioner households (2001)

Area	Total households	Households occupied by lone pensioners	% households occupied by lone pensioners
Moretonhampstead parish	656	116	17.7%
Remaining parishes	1,043	139	13.3%
Market town area	1,699	255	15.0%
Teignbridge	51,417	8,744	17.0%
Devon County Council	298,576	49,466	16.6%
England	20,451,427	2,939,465	14.4%



Source: 2001 Census.

### Number of Social Services clients per 1,000 population (2004)

Area	Clients by age group per 1,000 population of the same age group			
	50-64	65-74	75-84	85 and over
Moretonhampstead parish	7.9	37.3	139.1	563.4
Remaining parishes	6.0	6.6	93.8	441.9
Market town area	6.7	17.3	115.8	517.5
Teignbridge	14.3	44.1	137.1	464.0
Devon County Council	14.9	40.6	142.0	460.3

Source: Adult and Community Services, Devon County Council

## Children and Young People

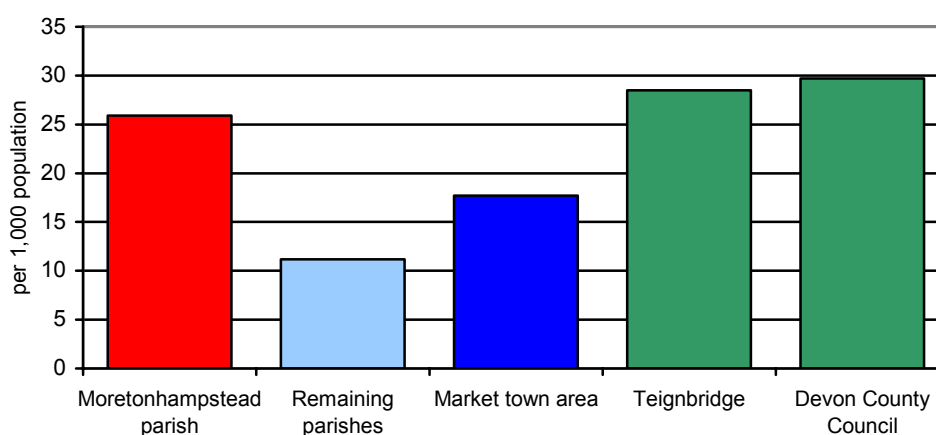
### Summary

The proportion of children in need is below average especially in the remaining parishes area.

The proportion of young offenders is also very low compared to the district and county averages.

### Children in need aged 0 to 17 years per 1,000 population aged 0 to 17 years (2003/04)

Area	Number of children aged 0 to 17	Number of children in need aged 0 to 17	Children in need aged 0 to 17 per 1,000 population aged 0 to 17
Moretonhampstead parish	347	9	25.9
Remaining parishes	445	5	11.2
Market town area	792	14	17.7
Teignbridge	25,169	717	28.5
Devon County Council	145,459	4,317	29.7



Source: Children and Young People's Services, Devon County Council

### Young offenders aged 10 to 17 years per 1,000 population aged 10 to 17 years (2000 to 2002)

Area	2000	2001	2002
Market town area	5.8	8.0	3.8
Teignbridge	12.1	28.1	20.6
Devon County Council	14.2	20.0	19.3

Note: Data based on wards – not possible to differentiate between town and rural area for Moretonhampstead area

Source: Youth Offending Team

## Community Safety

### Summary

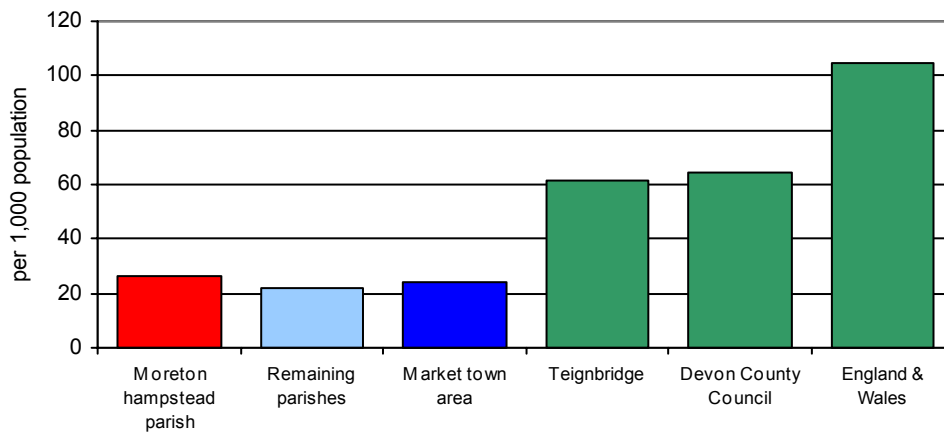
The market town area is below the district, county and national figures in all the crime categories where the data is viable.

There is little difference between the rates between Moretonhampstead parish and the remaining parishes area where data is available.

Data comprises addressable data only, and as such rates are based on approx 92% of all crime.

### Total crime per 1,000 population (2004/05)

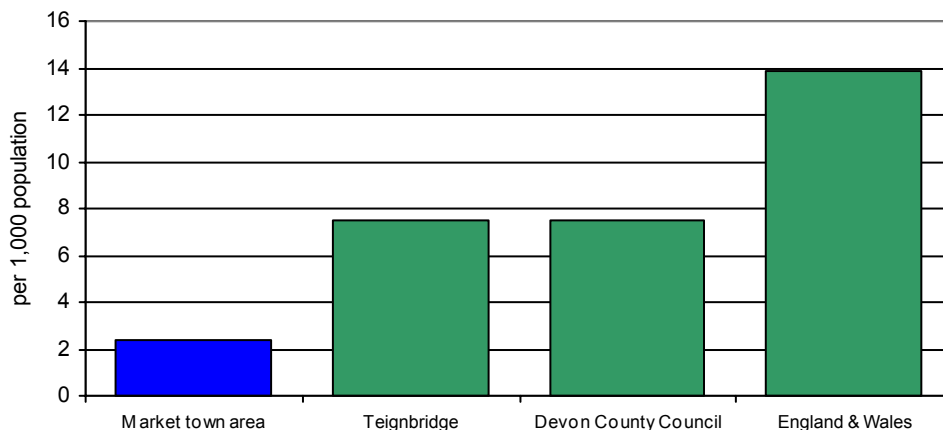
Area	Population	Total number of crimes	Crime per 1,000 population
Moretonhampstead parish	1,721	46	26.7
Remaining parishes	2,408	53	22.0
Market town area	4,129	99	24.0
Teignbridge	126,758	7,748	61.1
Devon County Council	742,911	47,612	64.1
England & Wales	53,045,600	5,562,700	104.9



Source: Devon & Cornwall Constabulary (Amethyst)

## Vehicle crime per 1,000 population (2004/05)

Area	Population	Number of vehicle crimes	Vehicle crimes per 1,000 population
Market town area	4,129	10	2.4
Teignbridge	126,758	950	7.5
Devon County Council	742,911	5,594	7.5
England & Wales	53,045,600	738,500	13.9

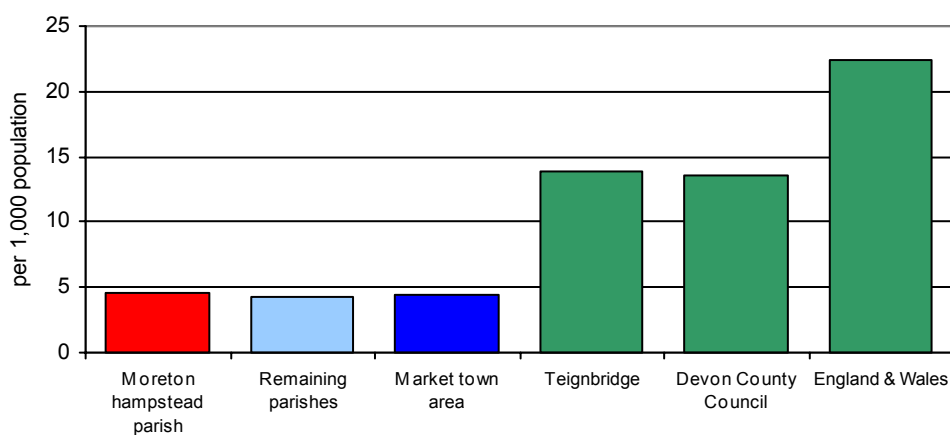


Source: Devon & Cornwall Constabulary (Amethyst)

Note: It is not possible to provide a breakdown for the profile area due to small counts.

## Violent crime per 1,000 population (2004/05)

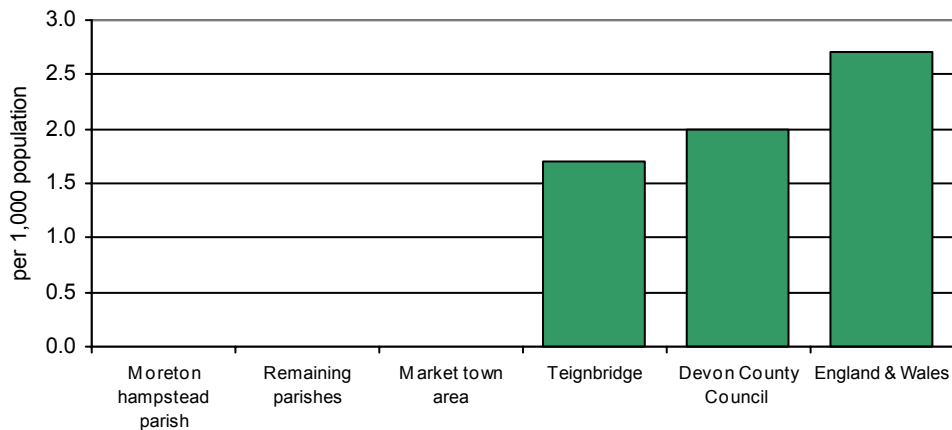
Area	Population	Number of violent crimes	Violent crimes per 1,000 population
Moretonhampstead parish	1,721	8	4.6
Remaining parishes	2,408	10	4.2
Market town area	4,129	18	4.4
Teignbridge	126,758	1,755	13.8
Devon County Council	742,911	10,138	13.6
England & Wales	53,045,600	1,185,700	22.4



Source: Devon & Cornwall Constabulary (Amethyst)

**Drug offences per 1,000 population (2004/05)**

Area	Population	Number of drug offences	Drug offences per 1,000 population
Moretonhampstead parish	1,721		
Remaining parishes	2,408		
Market town area	4,129	< 5	< 1.0
Teignbridge	126,758	220	1.7
Devon County Council	742,911	1,492	2.0
England & Wales	53,045,600	142,300	2.7

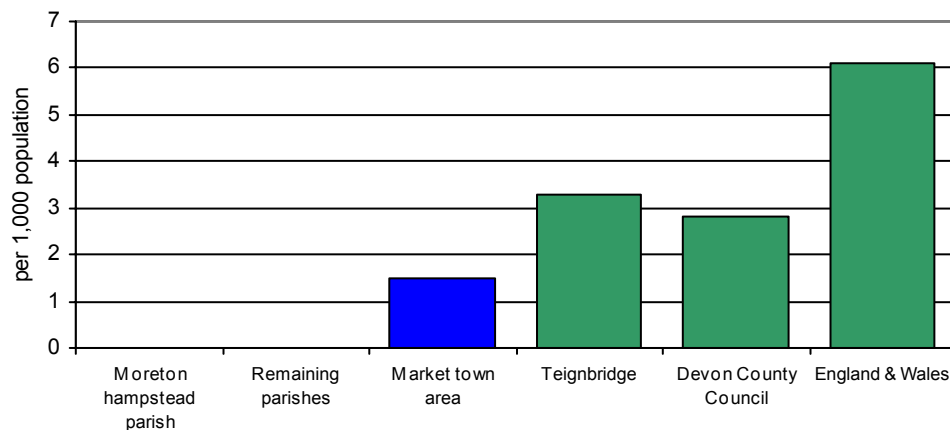


Note: It is not possible to provide a breakdown for the profile area due to small counts.

Source: Devon & Cornwall Constabulary (Amethyst)

**Dwelling burglaries per 1,000 population (2004/05)**

Area	Population	Number of dwelling burglaries	Dwelling burglaries per 1,000 population
Moretonhampstead parish	1,721		
Remaining parishes	2,408		
Market town area	4,129	6	1.5
Teignbridge	126,758	414	3.3
Devon County Council	742,911	2,046	2.8
England & Wales	53,045,600	321,500	6.1



Note: It is not possible to provide a breakdown for Moretonhampstead area due to small counts.

Source: Devon & Cornwall Constabulary (Amethyst)

# Housing

## Summary

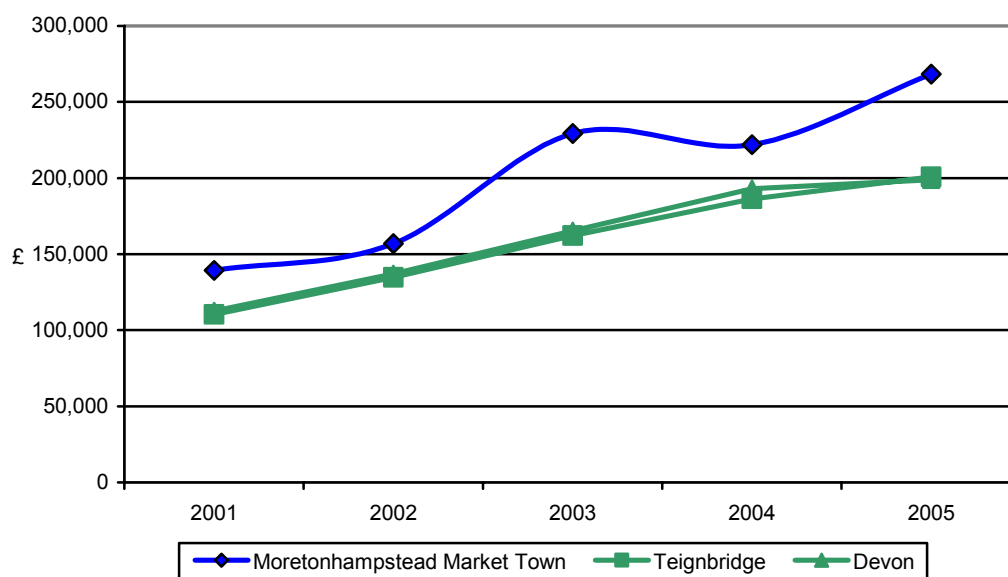
The district and county figures are similar but the market town area prices are considerably higher.

In 2004 average house prices within the market town area were considerably higher than the district and county figures.

In most cases tenure rates are similar to district and county figure, but accommodation rented from the housing association is a lot lower than all three comparisons.

## House price change (2001 to 2005)

Area	2001	2002	2003	2004	2005	% change 2001 - 2005
Moretonhampstead parish	£129,206	£143,750	£219,388	£216,394	£268,375	107.7%
Remaining parishes	£184,036	£178,679	£284,875	£238,313	n/a	n/a
Market town area	£139,307	£156,966	£229,273	£221,873	£268,375	92.7%
Teignbridge	£110,409	£134,598	£162,237	£186,382	£200,712	81.8%
Devon County Council	£112,752	£136,982	£165,267	£193,056	£198,835	76.3%



Source: Land Registry

Note: Data comprises sales between April and December 2001, all sales in 2002, 2003 and 2004 and from January to March 2005.

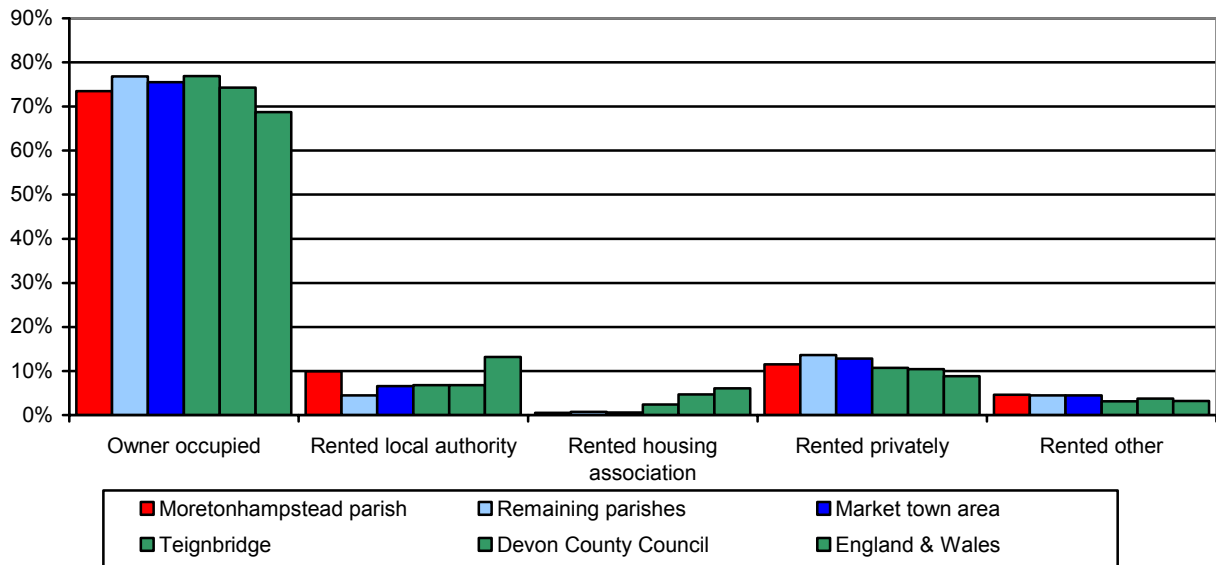
## Average house price (2004)

Area	Detached	Semi-Detached	Terraced	Flat/Maisonette	Overall
Moretonhampstead parish	£286,196	£224,630	£174,082	£129,950	£216,394
Remaining parishes	£291,643	£205,833	£192,333	n/a	£238,313
Market town area	£288,012	£220,292	£177,859	£129,950	£221,873
Teignbridge	£254,145	£178,554	£146,068	£117,610	£186,303
Devon County Council	£266,940	£180,252	£157,985	£138,260	£193,045
England & Wales	£270,745	£162,379	£136,862	£168,298	£178,504

Source: Land Registry

**Percentage of dwellings by tenure (2001)**

Area	All households	Owner occupied	Rented accommodation			
			Local authority	Housing association	Private	Other
Moretonhampstead parish	654	73.5%	9.9%	0.5%	11.5%	4.6%
Remaining parishes	1,047	76.8%	4.5%	0.7%	13.6%	4.5%
Market town area	1,701	75.5%	6.6%	0.6%	12.8%	4.5%
Teignbridge	51,417	76.9%	6.8%	2.4%	10.7%	3.1%
Devon County Council	298,576	74.3%	6.8%	4.7%	10.4%	3.8%
England & Wales	20,451,427	68.7%	13.2%	6.1%	8.8%	3.2%



Source: 2001 Census

# Transport

## Summary

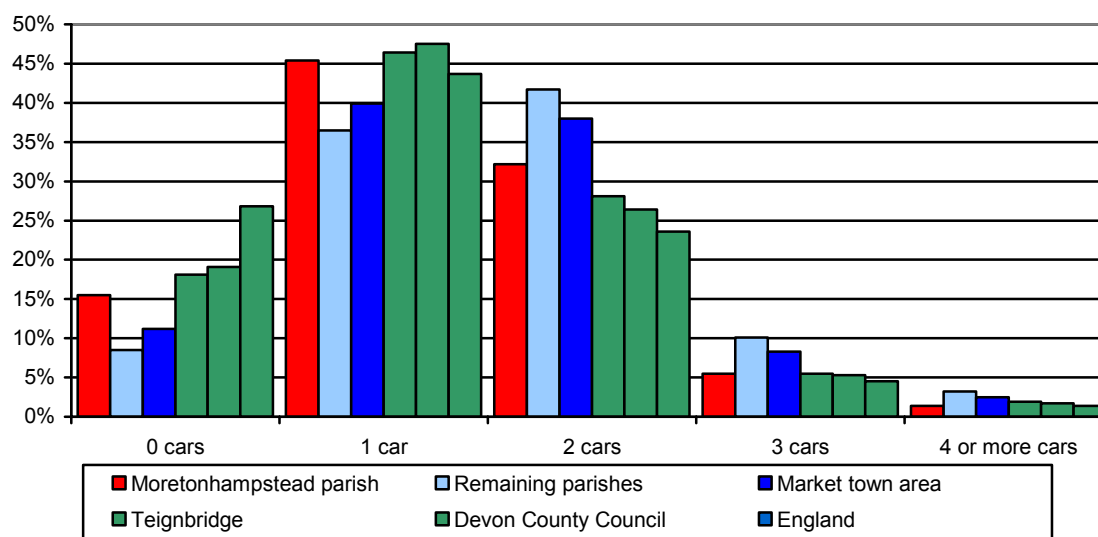
Looking at car ownership in the area the remaining parishes has a higher proportion of households with access to a car than the centre parish of Moretonhampstead.

People living in the market town area travel to work mainly by car or van. The proportion of people using public transport to commute to work is lower than all three comparisons. 29% of people living in the remaining parishes work from home.

There is a great contrast in access to services by public transport between Moretonhampstead parish and the remaining parishes area – especially access to shops and GP services.

## Car ownership (2001)

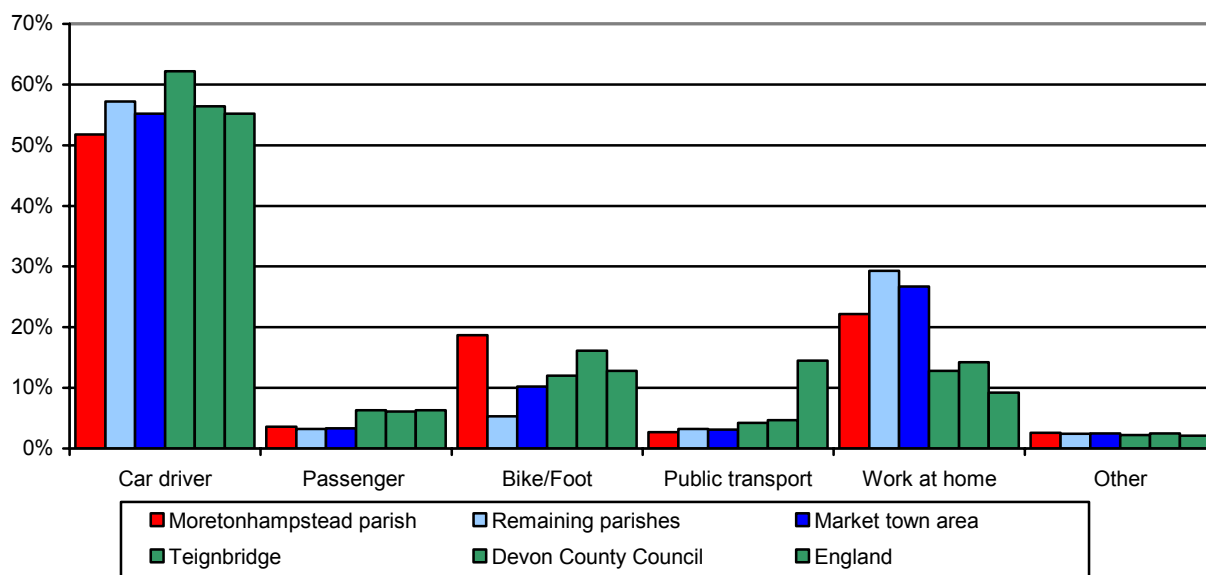
Area	All households	Households with:				
		No car	One car	Two cars	Three cars	Four or more cars
Moretonhampstead parish	656	15.5%	45.4%	32.2%	5.5%	1.4%
Remaining parishes	1,045	8.5%	36.5%	41.7%	10.1%	3.2%
Market town area	1,701	11.2%	39.9%	38.0%	8.3%	2.5%
Teignbridge	51,417	18.1%	46.4%	28.1%	5.5%	1.9%
Devon County Council	298,576	19.1%	47.5%	26.4%	5.3%	1.7%
England	20,451,427	26.8%	43.7%	23.6%	4.5%	1.4%



Source: 2001 Census

**Mode of travel to work (2001)**

Area	All 16-74 year olds in Employment	Percentage of population by mode of travel to work					
		By car or van	Passenger in a car or van	On a bike or by foot	By public transport	Work from home	Other
Moretonhampstead parish	662	51.8%	3.6%	18.7%	2.7%	22.2%	0.9%
Remaining parishes	1,170	57.2%	3.2%	5.3%	3.2%	29.3%	1.8%
Market town area	1,832	55.2%	3.3%	10.2%	3.1%	26.7%	1.5%
Teignbridge	53,228	62.2%	6.3%	12.0%	4.2%	12.8%	2.4%
Devon County Council	314,267	56.4%	6.1%	16.1%	4.7%	14.2%	2.5%
England	23,627,754	55.2%	6.3%	12.8%	14.5%	9.2%	2.1%



Source: 2001 Census

The data below relating to accessibility by public transport are based on a best fit of Lower Super Output Areas (LSOAs).

**Accessibility by public transport (2005)**

Area	Number of households	Percentage of households that can access:		
		Acute hospital within 60 minutes	GP within 30 minutes	Shops within 30 minutes
Moretonhampstead parish	656	75.0%	100.0%	100.0%
Remaining parishes	2,217	32.4%	6.3%	12.5%
Market town area	2,873	42.2%	27.7%	32.5%
Teignbridge	51,423	87.8%	88.3%	91.0%
Devon County Council	298,578	66.7%	86.6%	85.2%
England	17,436,116	82.8%	95.2%	94.4%

Source: Department for Transport

Note: Acute hospitals are establishments which provide at least minimal medical, surgical or obstetrical services for inpatient treatment and/or care, and which provide round-the-clock comprehensive qualified nursing service as well as other necessary professional services. Most patients require a relatively short stay.

# The Environment – Landscape

## Main Issues

In 2002 Devon County Council undertook and published a landscape appraisal of the county which included a landscape character assessment. The result of this assessment was the division of the County into 32 Landscape Character Zones. The Moretonhampstead market town area largely contains three Landscape Character Zones and small elements of two others.

## Landscape Character

Landscape character is defined as a distinct and recognisable pattern of elements that occur consistently in a particular type of landscape. Character makes each part of the landscape distinct, and gives each its particular sense of place.

Landscape character has an important role to play in that it informs the Devon County Structure Plan's fundamental landscape policy (CO1), requiring that development should be informed by and sympathetic to the landscape character of the area.

In 2002 Devon County Council undertook and published a landscape appraisal of the County which included a landscape character assessment. The result of this assessment was the division of the County into 32 Landscape Character Zones (LCZs), each with their own description and distinctive key characteristic features. The Moretonhampstead market town area contains parts of three of these LCZs, with small elements of two others. For those which are largely within the market town some of their key characteristics are outlined below.

### Dartmoor - enclosed

Location - The zone is a horseshoe-shaped area of land cupped around the eastern, southern and western sides of Dartmoor. It is a generally fairly narrow band stretching from South Zeal in the north east all the way round to Bridestowe in the north west, with a significantly expanded area towards Widecombe in the south. This LCZ covers the centre part of the market town area.

Designations - Most of the zone falls within the Dartmoor National Park, reflecting a landscape of national significance. All of the zone within the market town area is included.

#### Key Characteristic Features

- Strongly undulating landscape underlain by granite geology.
- Cut by distinctive wooded valleys.
- Strong field pattern, characterised both by hedges and stone walls.
- Enclosed, wooded appearance deriving from the valley woodlands, bushy hedgerows and hedgerow trees.
- Close visual relationship with adjacent high moor.
- Granite buildings, especially farmhouses.
- China clay works.

### Dartmoor – High Moor

Location - Dartmoor is situated in the west-central part of Devon, west of Exeter and north east of Plymouth. The high moorland part of Dartmoor occupies the central part of Dartmoor. The most southern part of the profile area is covered by this LCZ.

Designations - The whole zone is within Dartmoor National Park, a landscape of national importance.

#### Key Characteristics Features

- Extensive high moorland of blanket bog, heath and grass moor.
- Natural granite features providing characteristic landmarks.
- Archaeological features, remnants of quarrying and other extractive workings.
- Visual skyline element of many Devon landscapes.
- Broad, sweeping skylines punctuated by tors; panoramic views and wild "internal" vistas.
- Exposure to the elements.
- Recreational use.
- Ponies, cattle, sheep, walkers, cyclists, horse riders, kite flyers, paragliders, parked cars.

## Teign Valley

Location - The zone covers the middle Teign Valley, in the south-central part of the County. It abuts the eastern edge of Dartmoor and is centred on the Teign from near Chagford downstream to the neighbourhood of Chudleigh. The course of the river results in the zone trending west-east between Chagford and Dunsford and north-south between Dunsford and Chudleigh. Much of the northern part of the market town area falls within this zone.

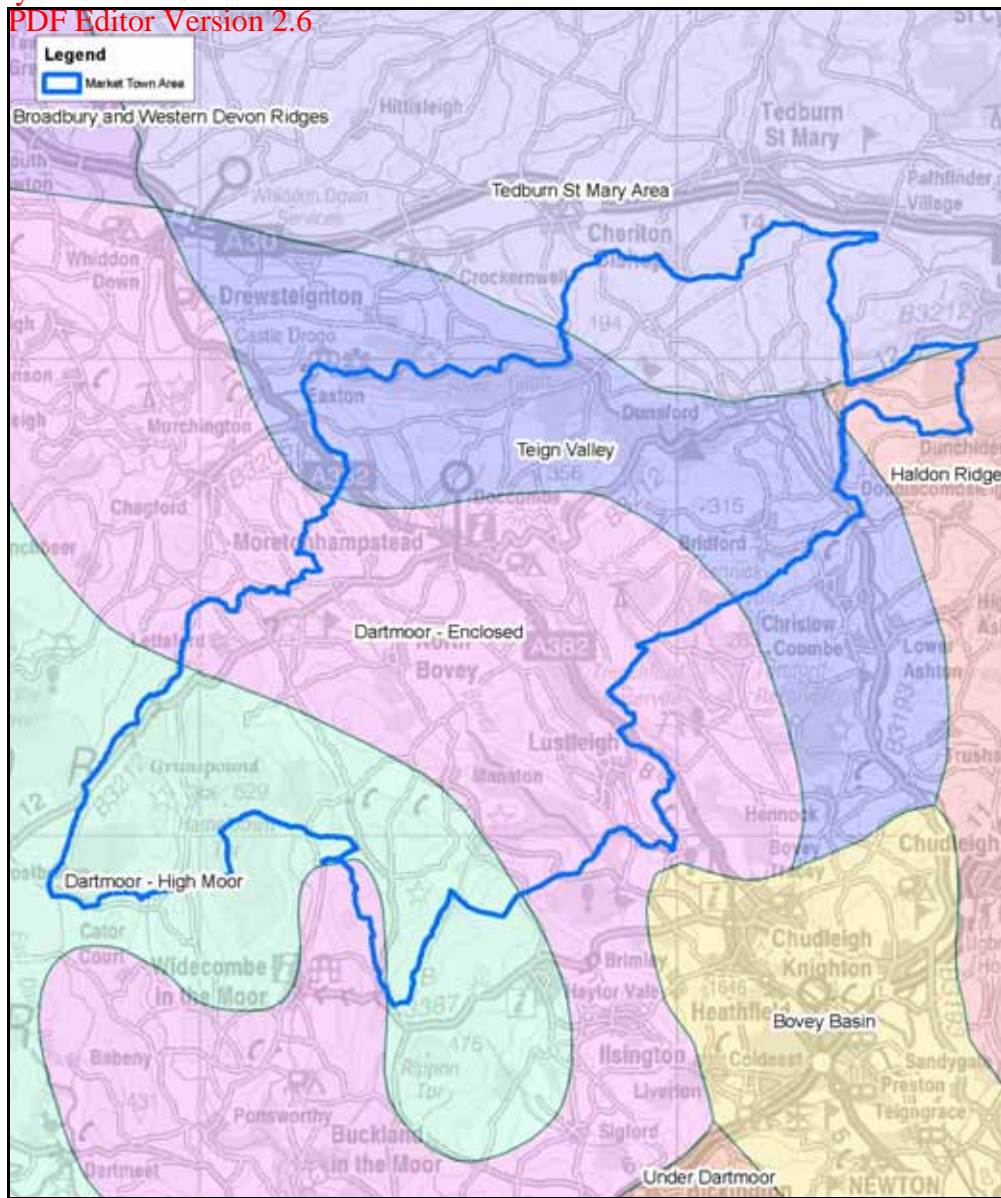
Designations – Virtually all of the zone within this market town area falls within Dartmoor National Park. The designation highlights the national landscapes significance of much of this zone.

### Key Characteristic Features

- Distinctive, often intimate valley sandwiched between the highlands of Dartmoor and Great Haldon.
- Valley dominated by woodland on steep, sometimes rocky flanks.
- Small scale, irregular field pattern with strong hedgebanks.
- Small villages tucked into side valleys away from the main valley.
- Tree lined river course with stone bridges, weirs, mills and daffodil woods.

Small elements of two further LCZs occur within the market town area. In the far north is the Tedburn St Mary Area LCZ and in the north east corner is a very small part of the Haldon Ridge Zone. Both of these elements carry the county landscape designation of Areas of Great Landscape Value (AGLV), indicating their county landscape significance.

## Landscape Character Zones within the market town area



Crown Copyright. All rights reserved. Devon County Council. 100019783 2006

## The Environment – Wildlife and Geology

### Summary

The last 60 years have seen many dramatic changes within the English countryside, with increasing urbanisation and shifting patterns of agriculture. Devon has fared better than most, however, being protected by its remoteness and undulating terrain.

There remains much wildlife and geology to enjoy and conserve, and many opportunities exist throughout the County to enhance the natural environment. Landowners, industry and, of course, local communities all have the chance to contribute to the conservation of Devon's rich natural history.

The area around Moretonhampstead is of considerable importance for wildlife. It is dominated by Dartmoor and has a very upland character and the feel of one of the less intensively managed parts of the County. This is reflected in the habitats to be found here. For example, Western oakwoods, such as along the Teign Valley, are major features of the landscape and have important communities of breeding birds, invertebrates and lichens. Elsewhere large expanses of moorland, with wet and dry heath and areas of mire can be found, again supporting a diverse fauna and flora. The rivers Teign and Bovey add to the diversity of the area and support their own characteristic wildlife.

These habitats are home to a wide diversity of species and only a few examples can be noted here. The Western oakwoods support characteristic communities of breeding birds, including species such as redstart and the spectacular pied flycatcher. The open moorland has its own breeding birds including wheatear and whinchat. The area is also home to many invertebrates, including rare butterflies. For example, the high brown fritillary breeds here. Dormice are present in the woodlands. Wild daffodils can be found quite commonly in this area, with spectacular displays to be seen at Dunsford.

### Key sites

The table below contains information on the key features of some of the most important wildlife sites of this part of Devon. A map is also included to illustrate these.

Site name	Interest	Designation
Dartmoor	Upland habitats including wet and dry heaths, blanket bog and Western oak wood.	SAC
South Dartmoor Woods	Western oak woodland and dry heaths.	SAC
Bovey Valley	Broadleaved woodland with very important lichen and bryophyte flora. Good breeding bird community typical of western woodland.	SSSI
East Dartmoor	Large area of heather moorland and mire communities.	SSSI
Teign Valley Woods	Oak / hazel woodland with a good flora and fauna, including the rare high brown fritillary butterfly and breeding pied flycatcher.	SSSI (& part Devon Wildlife Trust reserve)
Whiddon Deer Park	Contains many old trees that support an exceptional lichen flora and a variety of insects associated with dead wood.	SSSI
Yarner Wood & Trendlebere Down	Western oak woodland and wet and dry heath. Important lichen flora, breeding bird community and butterfly fauna.	SSSI

The Dartmoor SAC, above, consists of a number of SSSIs including, in this area, East Dartmoor.

The South Dartmoor Woods SAC, above, consists of a number of SSSIs including, in this area, Bovey Valley and Yarner Wood & Trendlebere Down.

In addition to the table above, the Moretonhampstead area has **5 County Wildlife Sites** (additional County wildlife Sites will soon be listed within Dartmoor National Park). These mainly represent woodland, unimproved neutral grassland and a kind of acidic, heathy and rushy grassland known as Culm Grassland.

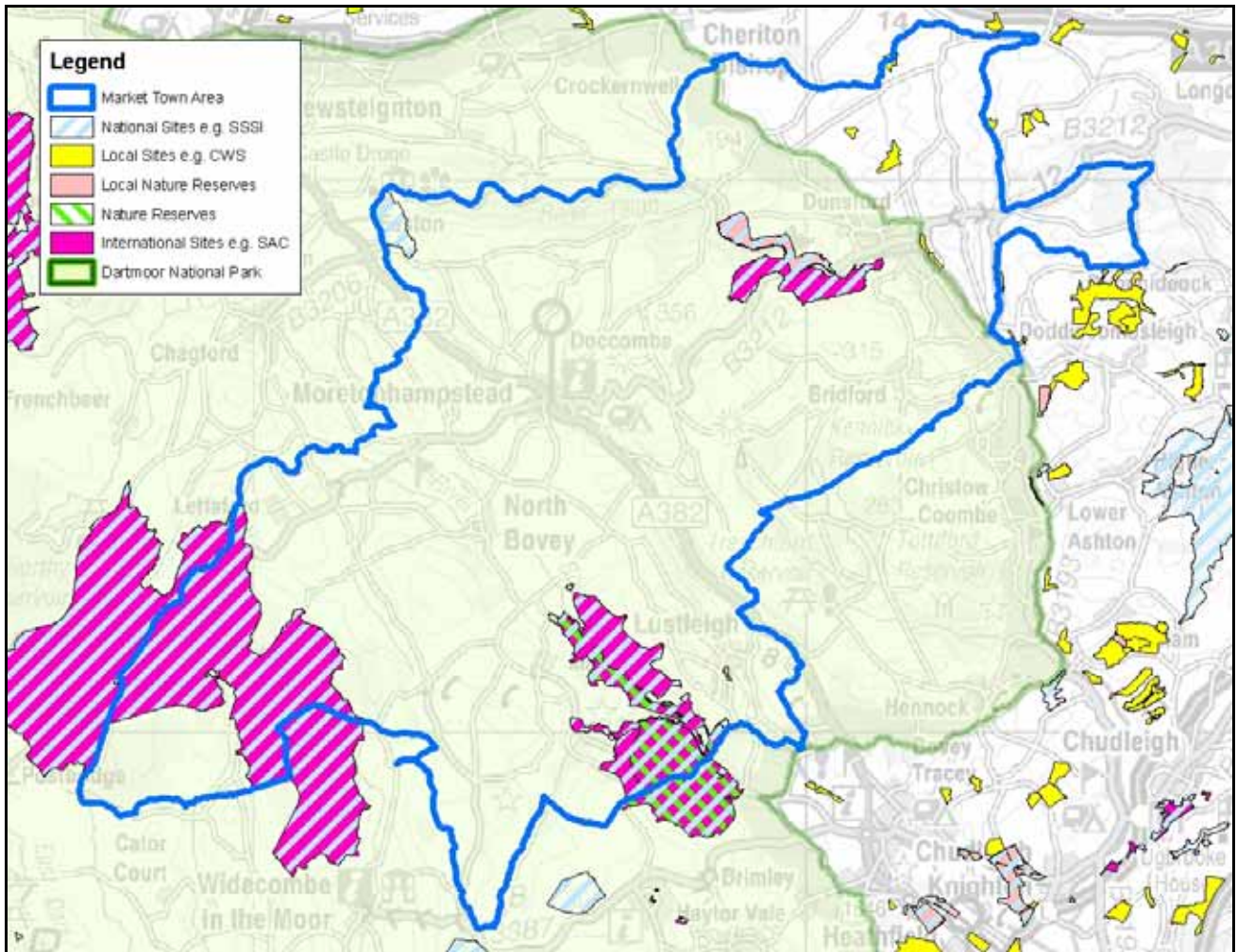
Key:

**Special Areas of Conservation (SAC):** these sites are notified because they contain species and/or habitats of European importance (listed in the Habitats Directive 1994). SAC is a statutory designation with legal implications.

**Sites of Special Scientific Interest (SSSI):** these sites are notified because of their national importance for wildlife or geological features (gSSSI, above). SSSI is a statutory designation with legal implications. SSSI status does not confer any right of access to the public.

**County Wildlife Sites (CWS):** these are sites of county importance for wildlife. CWS is not a statutory designation and does not have any legal status, though CWSs are usually included in district planning documents. CWS recognition places no formal obligation on the landowner, but may increase eligibility for land management grants. There are also County Geological Sites of a similar standing.

**Key sites in the market town area**



Crown Copyright. All rights reserved. Devon County Council. 100019783 2006