

Area definition

This profile is one of 62 (one for each electoral division) that have been produced by Devon County Council's Strategic Intelligence unit. They aim to give a broad overview of each County Councillor's electoral division.

Each profile covers a range of topics such as population, the economy, education standards and house prices.

Further, more detailed information may be available if required - please contact Strategic Intelligence for further information.

Email: StrategicIntelligence@devon.gov.uk

Telephone: 01392 382001



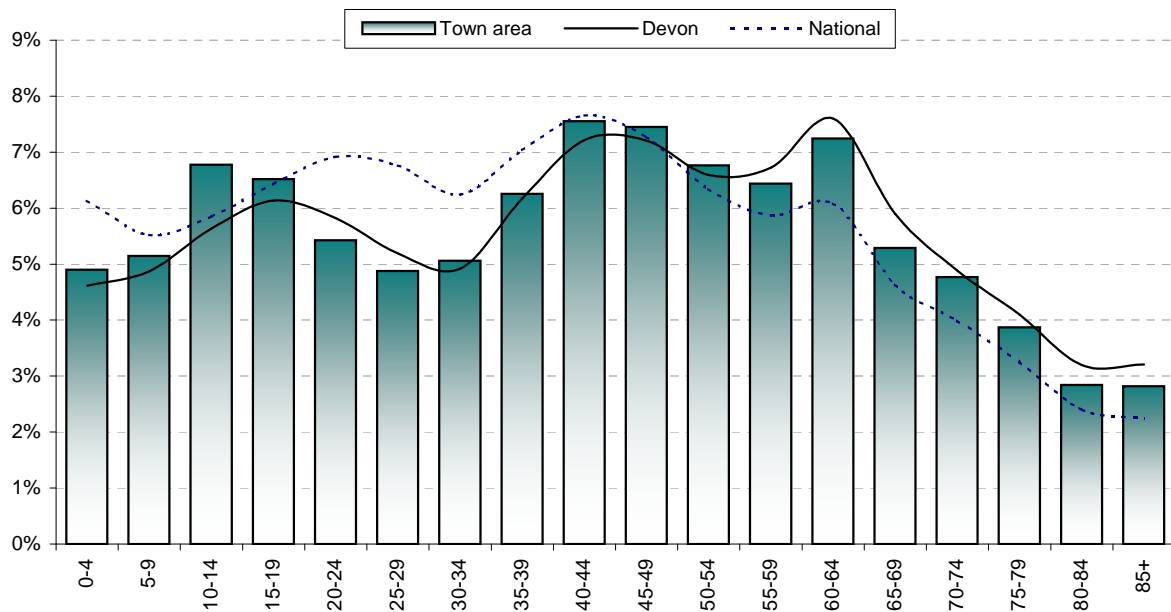
© Crown copyright. All rights reserved. 100019763 2010

The Exmouth Brixington & Withycombe Electoral Division comprises the following 2 wards: Exmouth Brixington and Exmouth Withycombe Raleigh

Population

Total population	Exmouth Brixington	Exmouth Withycombe Raleigh	Electoral Division	East Devon	Devon	National
2001	6,164	7,382	13,546	125,520	704,497	57,103,927
2008	6,572	7,428	14,000	132,700	754,700	59,608,200
Change	408	46	454	7180	50203	2504273
% change	7%	1%	3%	6%	7%	4%

Proportion aged	Exmouth Brixington	Exmouth Withycombe Raleigh	Electoral Division	East Devon	Devon	National
0-19	21.5%	25.9%	23.8%	20.1%	21.7%	24.0%
20-39	20%	24%	22%	19%	23%	27%
40-59	29%	29%	29%	27%	28%	27%
60-79	23%	20%	22%	27%	23%	18%
80 and over	6%	5%	6%	9%	7%	5%



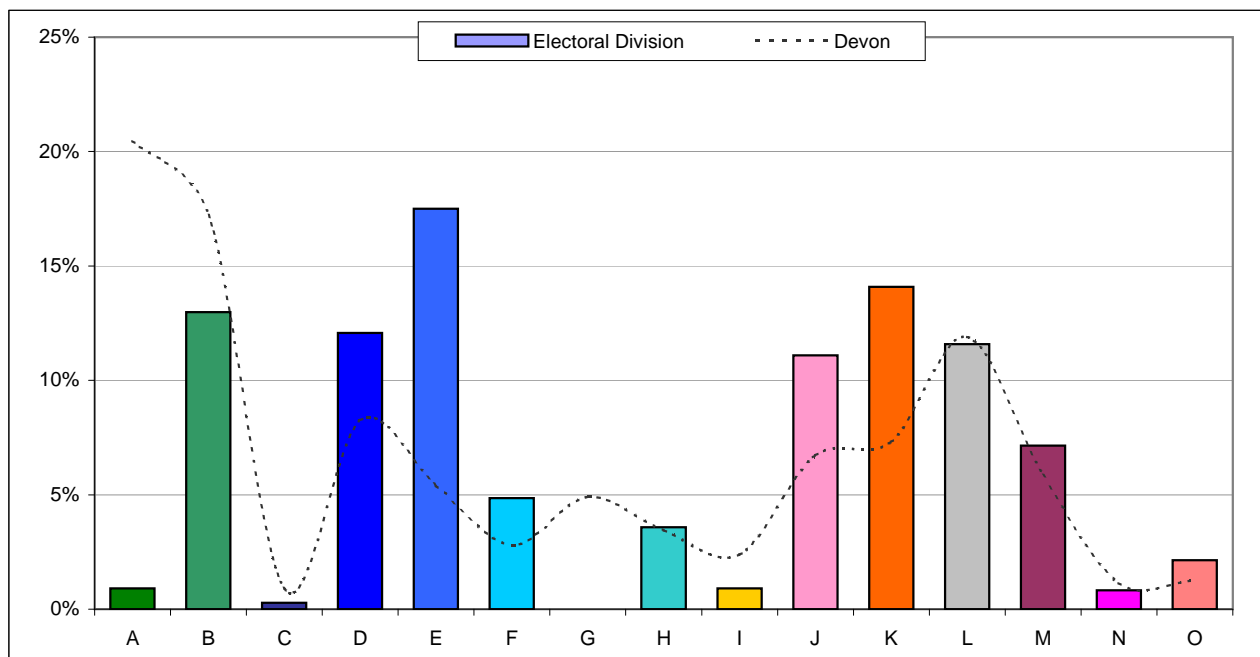
Population attributes

Information about the people that live in the area is taken from Experian's Mosaic data. Mosaic is based on the assumption that people living in an area are likely to be similar; however, it does not provide definitive description of each person.

The Mosaic data are broken down in to a number of groups, each one describing a section of the population.

	Households	%	Devon
A - Residents of isolated rural communities	54	0.9%	20.5%
B - Residents of small and mid-sized towns with strong local roots	770	13.0%	17.2%
C - Wealthy people living in the most sought after neighbourhoods	17	0.3%	0.9%
D - Successful professionals living in suburban or semi-rural homes	716	12.1%	8.3%
E - Middle income families living in moderate suburban semis	1038	17.5%	5.4%
F - Couples with young children in comfortable modern housing	288	4.9%	2.8%
G - Young, well-educated city dwellers	0	0.0%	4.9%
H - Couples and young singles in small modern starter homes	212	3.6%	3.5%
I - Lower income workers in urban terraces in often diverse areas	54	0.9%	2.4%
J - Owner occupiers in older-style housing in ex-industrial areas	658	11.1%	6.7%
K - Residents with sufficient incomes in right-to-buy social houses	835	14.1%	7.3%
L - Active elderly people living in pleasant retirement locations	687	11.6%	11.9%
M - Elderly people reliant on state support	424	7.2%	5.9%
N - Young people renting flats in high density social housing	49	0.8%	1.1%
O - Families in low-rise social housing with high levels of benefit needed	127	2.1%	1.3%

Distribution of households by Mosaic group



Deprivation

The principal source of deprivation data is currently The Indices of Deprivation 2007. This is a Lower Super Output Area (LSOA) level measure of deprivation. There are over 32,000 LSOAs in England, each one containing about 1,500 people. They were developed following the 2001 Census. The index comprises seven domains: income, employment, health & disability, education & training, barriers to housing & services, the living environment and crime. These are combined to give an overall indication of deprivation.

Population living in deprived areas

Population within most deprived 25% of areas in England	0
% population within most deprived 25% of areas in England	0%
Population within least deprived 25% of areas in England	6,725
% population within least deprived 25% of areas in England	47%

Deprivation data are not available for wards but the following tables show which wards contain the most deprived LSOA in the electoral division.

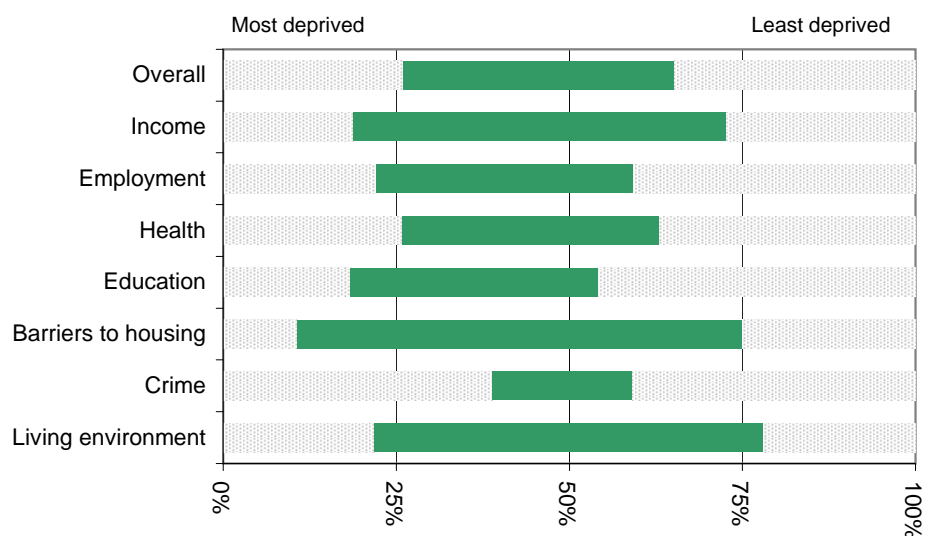
Most deprived areas

Overall	Exmouth Withycombe Raleigh
Income Deprivation	Exmouth Withycombe Raleigh
Employment Deprivation	Exmouth Withycombe Raleigh
Health Deprivation and Disability	Exmouth Withycombe Raleigh
Education, Skills and Training Deprivation	Exmouth Brixington
Barriers to Housing and Services	Exmouth Withycombe Raleigh
Living Environment Deprivation	Exmouth Withycombe Raleigh
Crime	Exmouth Withycombe Raleigh

Least deprived areas

Overall	Exmouth Brixington
Income Deprivation	Exmouth Brixington
Employment Deprivation	Exmouth Brixington
Health Deprivation and Disability	Exmouth Brixington
Education, Skills and Training Deprivation	Exmouth Brixington
Barriers to Housing and Services	Exmouth Brixington
Living Environment Deprivation	Exmouth Brixington
Crime	Exmouth Brixington

This graph shows the range of deprivation in the Exmouth Brixington & Withycombe division. The larger the green bar the more variation there is within the area.



Income

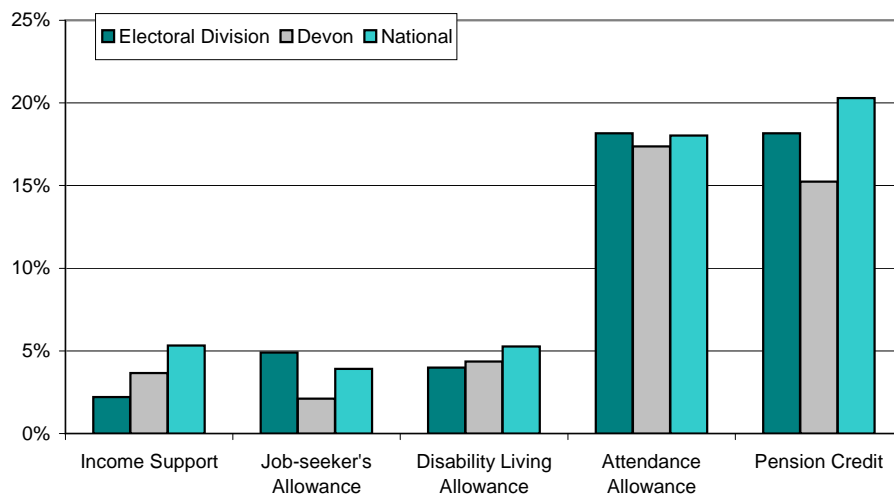
Income data are available at Middle Super Output Area (MSOA) level. MSOAs cover a population of about 7,500 but do not align well with electoral division boundaries. The figures provided below include all MSOAs where a substantial part falls inside the electoral division and as such will give a good indication of income levels in the area.

The figures shown below for wards are estimates based on the number of households in that ward and which MSOA those households are within.

	<i>Exmouth Brixington</i>	<i>Exmouth Withycombe Raleigh</i>	<i>Electoral Division</i>	<i>East Devon</i>	<i>Devon</i>	<i>National</i>
Average income (£)	32,850	30,764	31,738	30,365	31,243	35,101

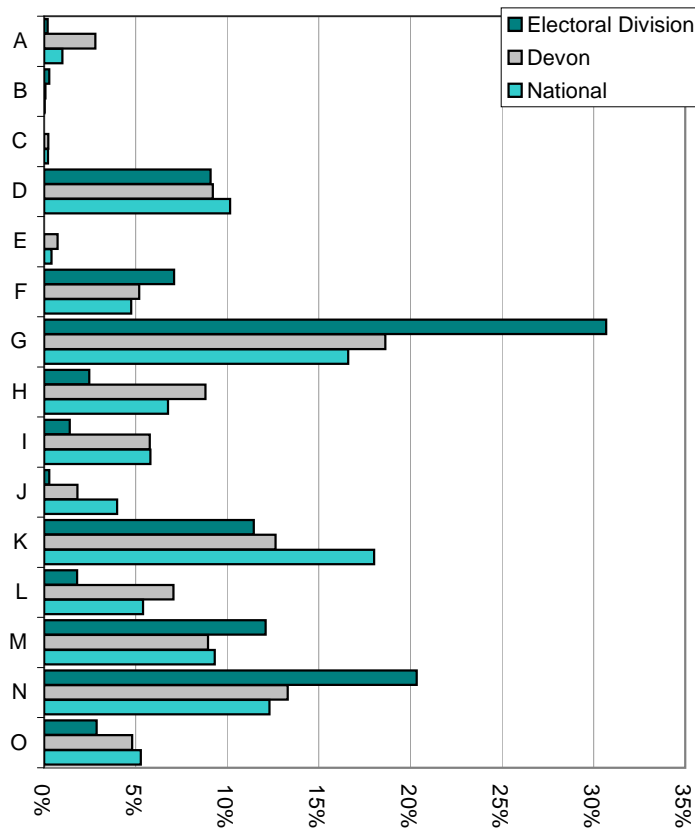
Benefits

Percent of:	<i>Exmouth Brixington</i>	<i>Exmouth Withycombe Raleigh</i>	<i>Electoral Division</i>	<i>East Devon</i>	<i>Devon</i>	<i>National</i>
16-59 year olds claiming Income Support	2.7%	4.6%	2.2%	2.9%	3.7%	5.3%
16-64 year olds claiming Job Seekers Allowance	1.6%	2.7%	4.9%	1.8%	2.1%	3.9%
Total population claiming Disability Living Allowance	5.0%	4.8%	4.0%	3.8%	4.4%	5.3%
65 and older claiming Attendance Allowance	19.1%	20.7%	18.2%	17.0%	17.4%	18.0%
60 and older claiming Pension Credit	15.0%	21.4%	18.2%	12.4%	15.2%	20.3%



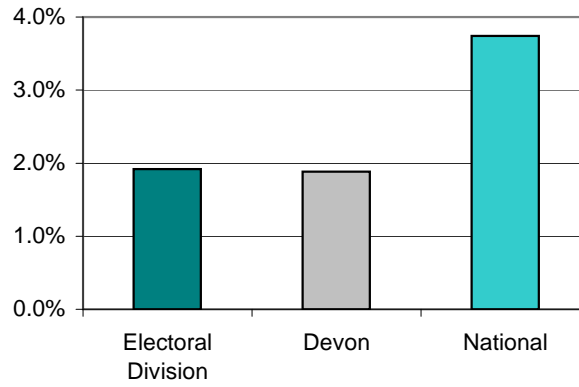
Employment

Percent of all employees	Exmouth Brixington	Exmouth Withycombe Raleigh	Electoral Division	East Devon	Devon	National
A : Agriculture & forestry	0.7%	0.1%	0.2%	3.7%	2.8%	1.0%
B : Fishing	0.9%	0.1%	0.3%	0.1%	0.1%	0.0%
C : Mining & quarrying	0.0%	0.0%	0.0%	0.3%	0.2%	0.2%
D : Manufacturing	0.7%	11.2%	9.1%	7.1%	9.2%	10.2%
gas & water	0.0%	0.0%	0.0%	0.0%	0.7%	0.4%
F : Construction	6.9%	7.1%	7.1%	5.6%	5.2%	4.8%
G : Wholesale & retail trade	20.8%	33.1%	30.7%	19.7%	18.6%	16.6%
H : Hotels & restaurants	7.4%	1.2%	2.5%	11.0%	8.8%	6.8%
I : Transport, storage & comms	0.7%	1.6%	1.4%	6.9%	5.8%	5.8%
J : Financial services	0.0%	0.3%	0.3%	2.6%	1.8%	4.0%
K : Real estate & business activities	15.0%	10.5%	11.4%	9.9%	12.6%	18.0%
L : Public admin & defence	0.0%	2.3%	1.8%	5.3%	7.1%	5.4%
M : Education	17.8%	10.7%	12.1%	8.2%	8.9%	9.3%
N : Health & social work	27.1%	18.7%	20.3%	14.4%	13.3%	12.3%
O : Other community services	1.9%	3.1%	2.9%	5.2%	4.8%	5.3%



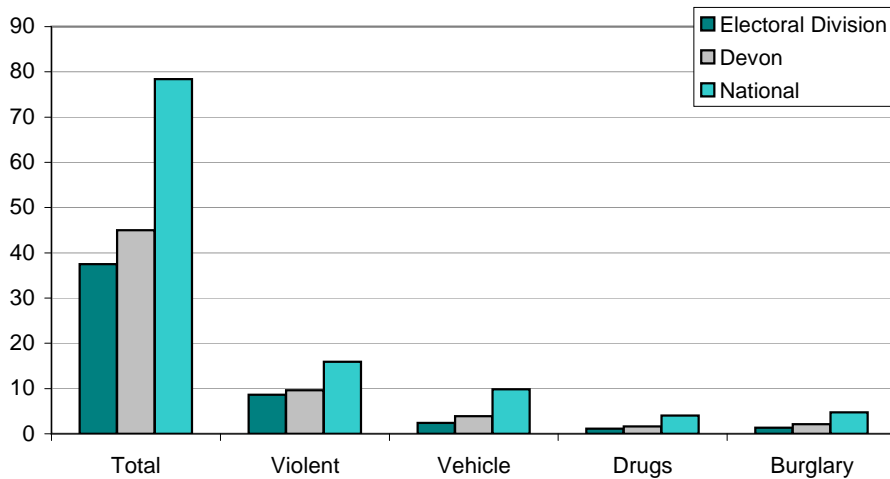
Unemployment

	<i>Exmouth Brixington</i>	<i>Exmouth Withycombe Raleigh</i>	<i>Electoral Division</i>	<i>East Devon</i>	<i>Devon</i>	<i>National</i>
Number unemployed	54	100	154	1,115	8,268	1,383,990
% of working age population	1.5%	2.3%	1.9%	1.6%	1.9%	3.7%



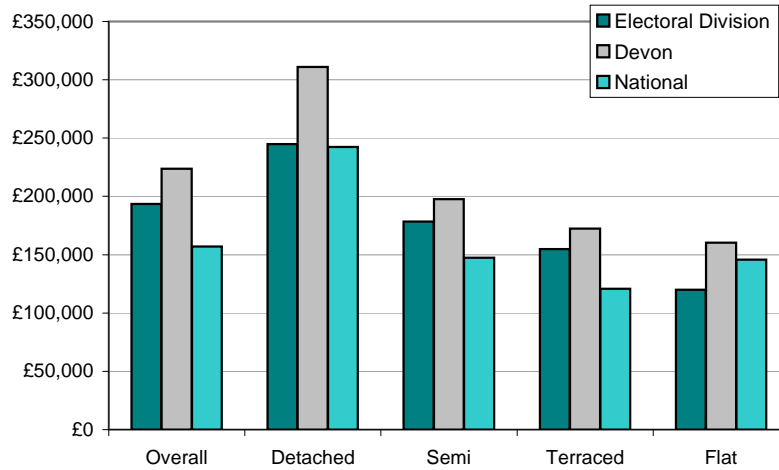
Crime

Crimes per 1,000 population	<i>Exmouth Brixington</i>	<i>Exmouth Withycombe Raleigh</i>	<i>Electoral Division</i>	<i>East Devon</i>	<i>Devon</i>	<i>National</i>
Total crime	24.1	49.0	37.5	38.9	45.0	78
Violent crime	5.3	11.4	8.6	8.1	9.6	15.9
Vehicle crime	1.4	3.2	2.4	3.5	3.9	10
Drug offences	0.0	2.1	1.1	1.9	1.6	4.0
House burglary	0.8	1.8	1.3	2.0	2.1	4.7

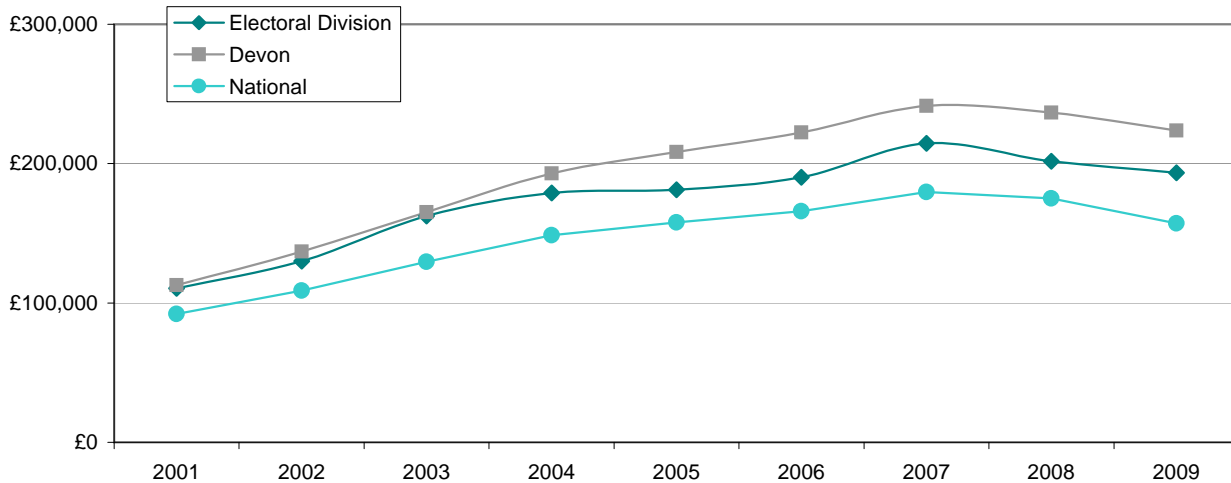


House prices

2009 average prices (£)	Exmouth Brixington	Exmouth Withycombe Raleigh	Electoral Division	East Devon	Devon	National
Overall	204,233	180,515	193,410	246,494	223,636	157,033
Detached	243,234	248,472	244,798	340,503	310,899	242,492
Semi-detached	174,902	184,578	178,492	214,777	197,547	147,464
Terraced	153,592	155,637	154,918	182,190	172,313	120,663
Flat/Maisonette	0	120,077	120,077	175,442	160,202	145,635



Overall average price (£)	2001	2002	2003	2004	2005	2006	2007	2008	2009
Exmouth Brixington & Withycombe	110,419	130,074	162,346	178,932	181,145	190,151	214,629	201,586	193,410
Devon	112,730	136,964	165,224	193,049	208,325	222,466	241,522	236,700	223,636
England & Wales	92,189	108,981	129,626	148,705	157,774	165,907	179,678	175,124	157,033



Place Survey

The 2008 Place Survey provides information on people's perceptions of their local area and the local services they receive. The survey collects information on 18 national indicators for local government, used to measure local government performance for 152 county councils, metropolitan district councils, London boroughs and unitary authorities.

Further information can be found on the Department for Communities and Local Government's website:
www.communities.gov.uk

Figures are the proportion of people responding to the survey who live in the Exmouth Brixington & Withycombe electoral division. Due to the relatively small number of people surveyed in each electoral division the results may be unreliable, but they will give an indication of feelings within the area - 113 people were surveyed in the Exmouth Brixington & Withycombe electoral division.

What things are most important in making somewhere a good place to live?

56%	Health services
51%	The level of crime
35%	Affordable decent housing
35%	Public transport
33%	Clean streets

What things most need improving in this area?

48%	Activities for teenagers
39%	Wage levels and cost of living
37%	Road and pavement repairs
33%	Affordable decent housing
30%	Shopping facilities

People saying they are very satisfied or fairly satisfied with	Electoral division	Devon
Their local area as a place to live	93%	89%
Their local council	56%	52%
Their county council	49%	45%

Education

Exmouth
 Brixington
 Exmouth
 Withercombe
 Raleigh
 Electoral
 Division
 East Devon
 Devon
 National

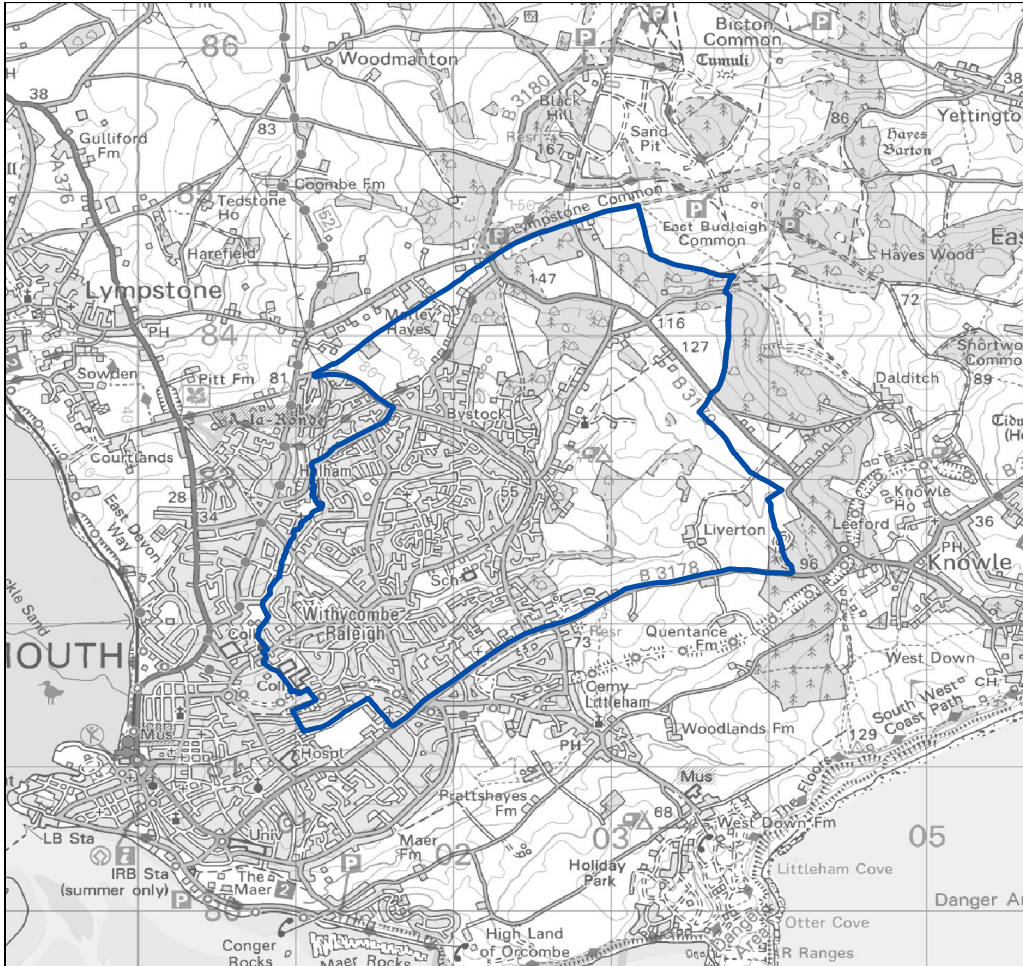
% children achieving Key Stage 2 level 4 or above in

English	83%	79%	81%	84%	81%	80%
Maths	82%	76%	79%	83%	80%	79%
Science	89%	85%	87%	92%	90%	88%

% children achieving 5 or more GCSEs at grades

A*-C	74%	65%	69%	69%	66%	70%
A*-C including English and Maths	61%	57%	59%	58%	51%	51%
A*-G	93%	88%	90%	93%	94%	92%

Exmouth Brixington & Withercombe area



Further information and sources

Population : 2001 - Census © Crown copyright
2008 - Registrar General's Mid Year Estimates, Office for National Statistics © Crown copyright
Age breakdown - Devon figures from NHS Devon, national figures from 2009 Mid Year Estimate,
Office for National Statistics © Crown copyright

Population attributes : Mosaic Public Sector © Experian

Deprivation : Indices of Deprivation 2007
Department for Communities and Local Government, © Crown copyright
<http://www.communities.gov.uk/indices>

Income : Model-Based Estimates at MSOA Level, 2007/08
Crown Copyright ©

Benefits : May 2009 - Department for Work and Pensions
© Crown copyright
<http://research.dwp.gov.uk/asd/tabtool.asp>

Employment : Annual Business Inquiry 2007
Office for National Statistics © Crown copyright
<http://www.nomisweb.co.uk>

Unemployment : April 2009 - Office for National Statistics
© Crown copyright
<http://www.nomisweb.co.uk>

Crime : April 2008 - March 2009
Devon and Cornwall Constabulary

Education : Children and Young People's Directorate, Devon County Council
Department for Education © Crown Copyright
Local figures relate to children living in an area and attending a Devon County Council maintained school. As such figures may vary from nationally published data.

House prices : Land Registry
© Crown copyright
National figures relates to England and Wales. Overall national house price is weighted by number of sales in each month. National house prices by type are simple averages of monthly averages - this figure may be skewed if there were a large number of sales in a particular month.

Place Survey : Department for Communities and Local Government
© Crown copyright
<http://www.communities.gov.uk/publications/localgovernment/newplacesurvey>

This profile has been produced by the County Council's Strategic Intelligence Unit. For further information please contact us.

Email: StrategicIntelligence@devon.gov.uk

Telephone: 01392 382738