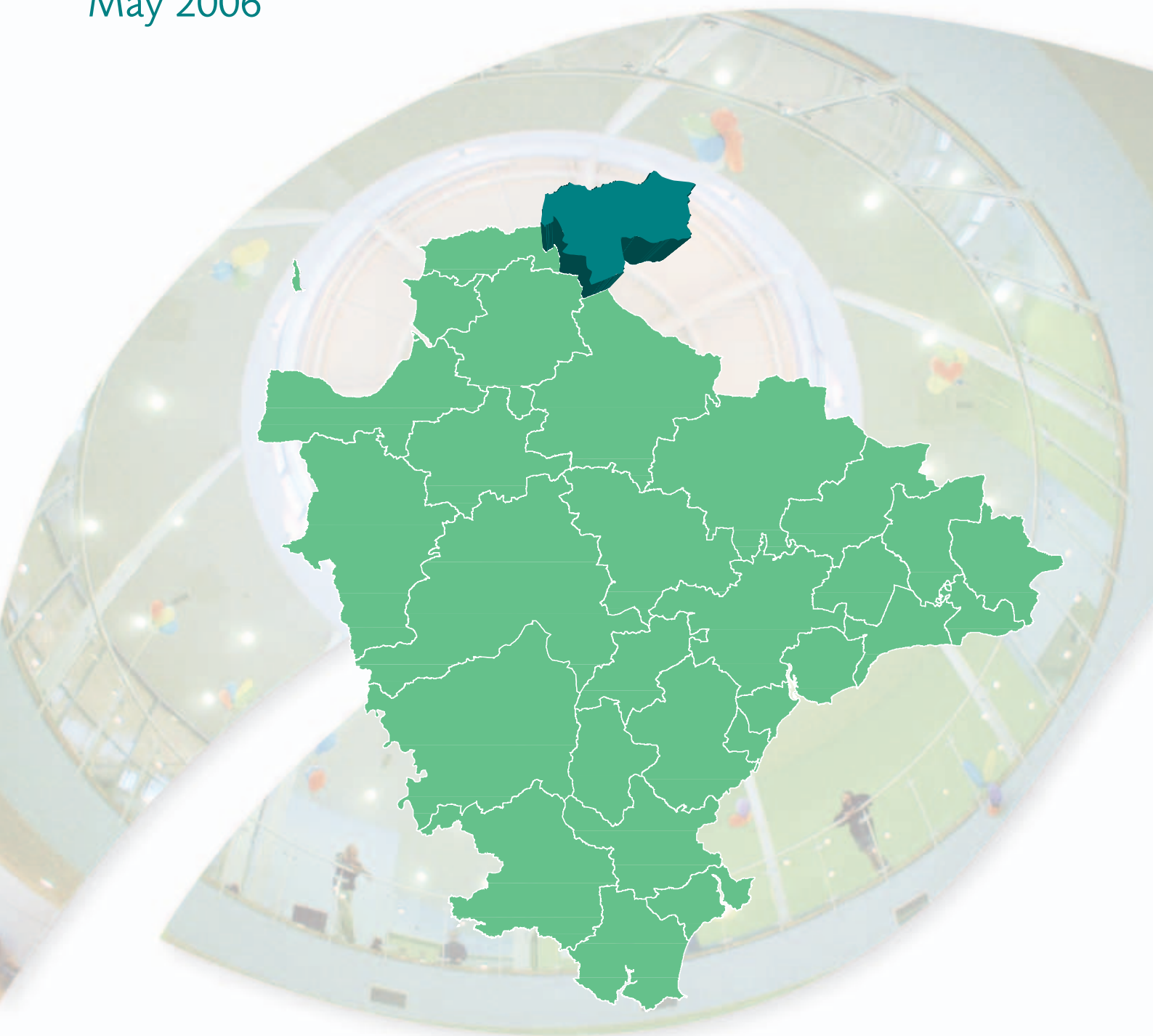


# Lynton and Lynmouth Devon Town Baseline Profile

May 2006

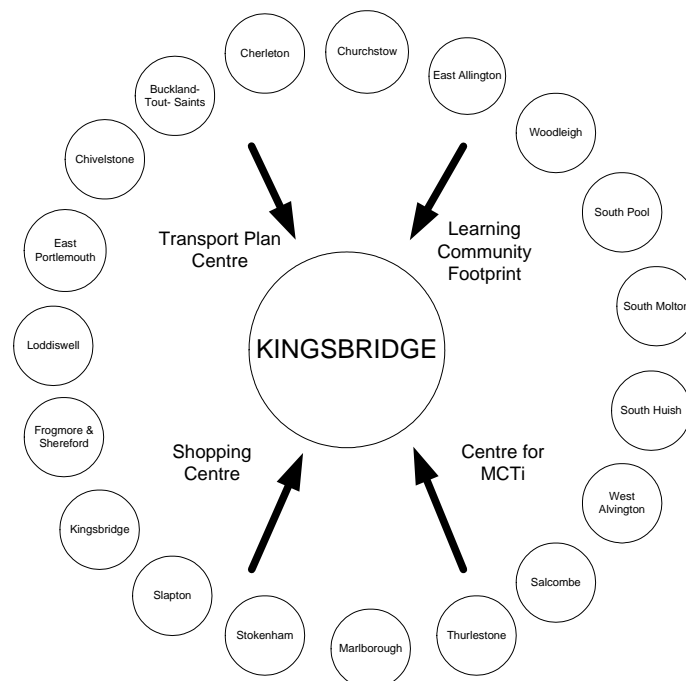


# Identifying Devon Towns

The main factor that decides a town's hinterland is provision of services; the place that the hinterland looks to in order to provide the things it needs to survive. In order to identify the 28 Devon Towns, analysis of the following services and other relevant factors have been taken into account:

- Local Travel Plans – which are based on public consultation and map local travel patterns, the majority of which are short ones in and around local communities as part of people's daily lives.
- Shopping catchment areas – which are the service most frequently accessed by people.
- Learning Community catchment areas – which have a major influence on where people look to for services. Learning Community catchments do not always follow district or even county boundaries, but are based on a collection of feeder primary schools.
- Market and Coastal Towns Initiative areas - The Market and Coastal Towns Initiative was started after recognition that the health of a market town is vital to the well being of its hinterland, and that many of Devon's market towns were in need of regeneration. It is a Central Government initiative, administered by the RDAs. Over half of Devon is included in the Market and Coastal Towns Initiative.
- Parishes - The boundary definitions are shown in terms of parishes, as they are traditionally the smallest area used for 'clustering'.

The diagram below is an illustration of how this works for one Devon Town: Kingsbridge.



Exeter also provides a similar or related "market town" function as well as being a sub regional centre with a larger sphere of influence.

## Foreword

In Devon, we want a county for everyone.

We want all to share in our economic prosperity, to have access to the best possible public services and to enjoy a good quality of life.

Our county is made up of many small and scattered communities built around larger market and coastal towns and the vibrant city of Exeter.

To make sure that the County Council and other agencies provide a good service to all these diverse communities and can meet their future needs, we need to fully understand and take into account the local situation and any local issues.

We call this initiative “Connecting with Communities” and it is a key part of our Strategic Plan for the future of Devon.

To help, we have produced a local profile of each of the key market and coastal towns in Devon and their surrounding area.

Based on key facts and figures, these profiles are just a starting point for local discussion about the real needs and priorities of each of our communities.

I hope you find this information useful and that it proves an invaluable resource in all future local planning.

Councillor Des Hannon  
Executive Support Member for Improvement and Customer Service  
Devon County Council



---

## Introduction

This profile, one of 29 covering the area of Devon County Council, has been generated by the County Council's Corporate Information Service and is an important resource contribution to local community planning work.

Each profile provides a statistical overview, based on a series of facts and figures, of what life is like in each "Devon town" area. The profile contains a baseline of information and is intended to provide the basis for further discussion and development within the County Council and with partners.

In light of these discussions the profile can grow into a more rounded picture describing "how things are" for each area, as well as to set out the likely future actions that will be needed to redress any gaps in service or unmet needs.

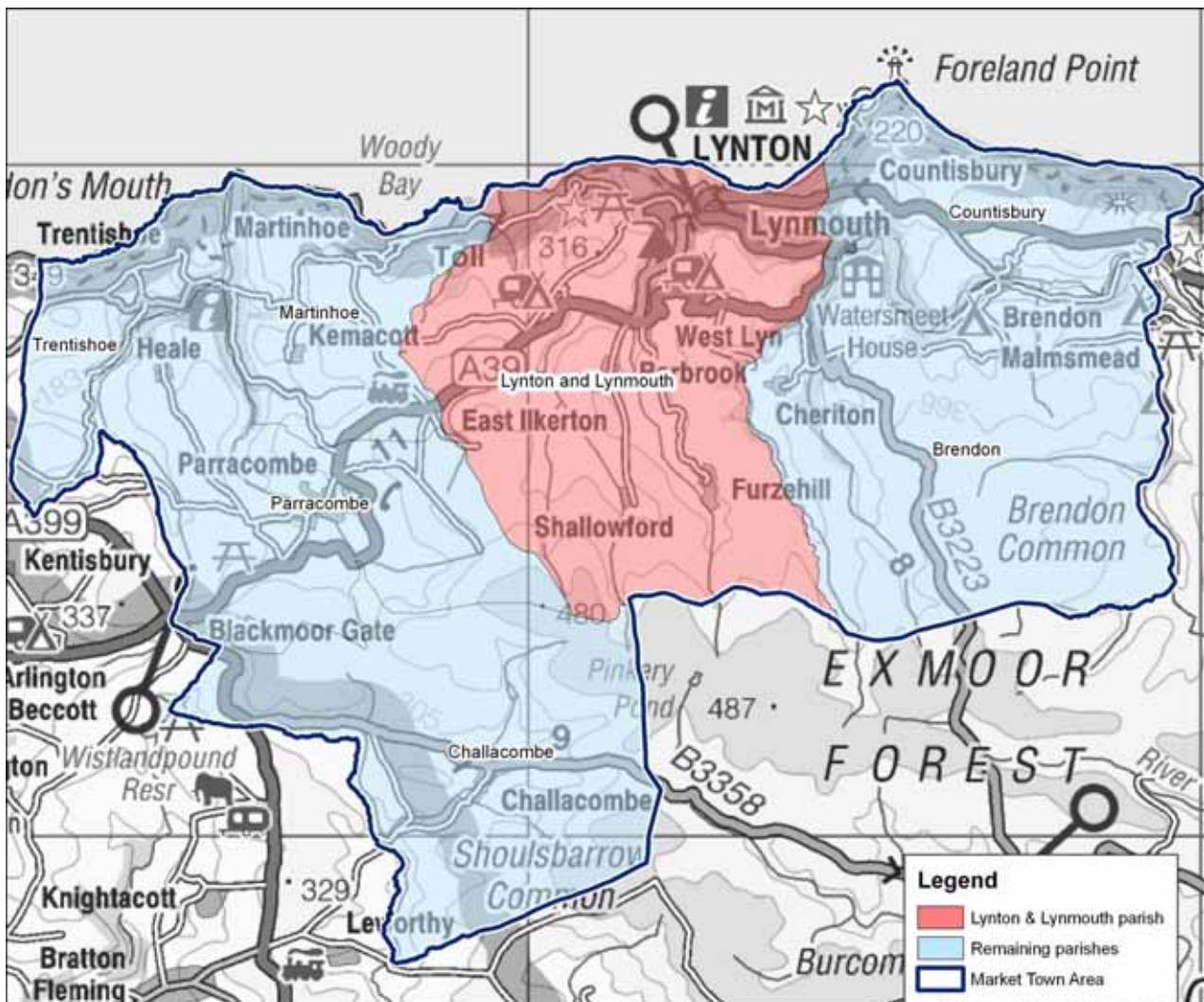
The profile is structured around a series of themes to cover social, economic and environmental well being. This is a starting point in producing profiles about our "Devon town" areas in which considerable effort has been made to provide a comprehensive series of data. Further data will be added to subsequent editions as they become available to provide a more complete picture and monitor trends.

The profiles are available on the County Council website – [www.devon.gov.uk/devontownprofiles](http://www.devon.gov.uk/devontownprofiles)

## Area definition

Market town areas have been defined as aggregations of parishes. The following seven parishes make up the Lynton & Lynmouth market town area:

Brendon	Challacombe	Countisbury	Lynton & Lynmouth	Martinhoe
Parracombe	Trentishoe			



Crown Copyright. All rights reserved. Devon County Council. 100019783 2006

As much of the data included in this profile is produced at a ward level, a 'best-fit' of wards is also used. Wards are included in one market town area if more than 60% of the population of that ward live within the market town boundary. If between 40% and 60% of a ward's population falls within a market town area it will be included, but may also be included in another area.

The ward that comprises the market town area in this profile is as follows:

Lynton & Lynmouth

Lynton & Lynmouth ward falls completely inside the market town boundary. As only 7% of the population of the ward of Bratton Fleming ward falls within this market town it is not included in this profile but in Barnstaple's instead. The same applies to Combe Martin where 11% of the ward is in this market town area and the ward is included in the Ilfracombe profile.

Each market town area is comprised of a centre (coloured red) and its surrounding hinterland (referred to as the "Remaining parishes" throughout this document). The centre for this profile is considered to be the parish of Lynton & Lynmouth but there is no equivalent for ward data that can be applied.

Some national datasets are released using a new geographic hierarchy – Super Output Areas. The lowest level – Lower Super Output Areas (or LSOAs) – is about one third the size of a ward. These are aggregated to form Middle Super Output Areas (MSOAs). Where data are only available at Super Output Area a best-fit approach has been adopted. There are three LSOAs that fall either fully or partially inside the market town area, but

---

unfortunately these cannot be used to calculate a centre and remaining area. There is one MSOA in the market town area, which can be used to calculate just a total market town area figure.

Additional information has been included to provide some comparisons. All tables have data for the North Devon district and the area administered by Devon County Council – where reference is made to the county of Devon this refers to the area covered by Devon County Council, which does not include Plymouth or Torbay. Where possible data are also included at a national level, either for England or England & Wales.

## Contents

Population.....	8
Percentage of population by age band (2004).....	8
Population change (1991 to 2004).....	8
Ethnicity (2001).....	9
Household composition (2001).....	9
Deprivation.....	10
Comparison of IMD 2000 and ID 2004.....	10
Map of Index of Deprivation 2004.....	11
The Local Economy.....	12
Unemployment as a proportion of working age resident population (April 2005).....	12
Economic activity (2001).....	13
Households with an annual income of less than £20,000 (2004).....	14
Employment of people living in the area by industry (2001).....	15
Percentage of businesses in profile area by Standard Industrial Classification (2004).....	16
Skills and Learning.....	17
Number and percentage of pupils achieving at least Key Stage 2 Level 4 (2004).....	17
GCSE attainment (2002/03).....	17
Highest level of qualification (2001).....	18
Health, Care and Wellbeing.....	19
Incapacity Benefit & Severe Disablement Allowance and Disability Living Allowance claimant rates (2004).....	19
Percentage of people living with a limiting long-term illness (2001).....	20
General Health (2001).....	20
Older People.....	21
Percentage of lone pensioner households (2001).....	21
Number of Social Services clients per 1,000 population (2004).....	21
Children and Young People.....	22
Children in need aged 0 to 17 years per 1,000 population aged 0 to 17 years (2003/04).....	22
Young offenders aged 10 to 17 years per 1,000 population aged 10 to 17 years (2000 to 2002).....	22
Community Safety.....	23
Total crime per 1,000 population (2004/05).....	23
Vehicle crime per 1,000 population (2004/05).....	24
Violent crime per 1,000 population (2004/05).....	24
Drug offences per 1,000 population (2004/05).....	25
Dwelling burglaries per 1,000 population (2004/05).....	25
Housing.....	26
House price change (2001 to 2005).....	26
Average house price (2004).....	26
Percentage of dwellings by tenure (2001).....	27
Transport.....	28
Car ownership (2001).....	28
Mode of travel to work (2001).....	29
Accessibility by public transport (2005).....	29
The Environment – Landscape.....	30
Landscape character.....	30
Landscape Character Zones within the market town area.....	31
The Environment – Wildlife and Geology.....	31
Key sites.....	32

This profile makes use of data from the 1991 and 2001 Censuses. All such data is acknowledged as Crown Copyright.

## Population

### Summary

The structure of the population is broadly similar to that across the district and the county. In the remaining parishes there is a slightly higher proportion of the older working age (45-64) offset by a lower proportion in the younger working age (25-44).

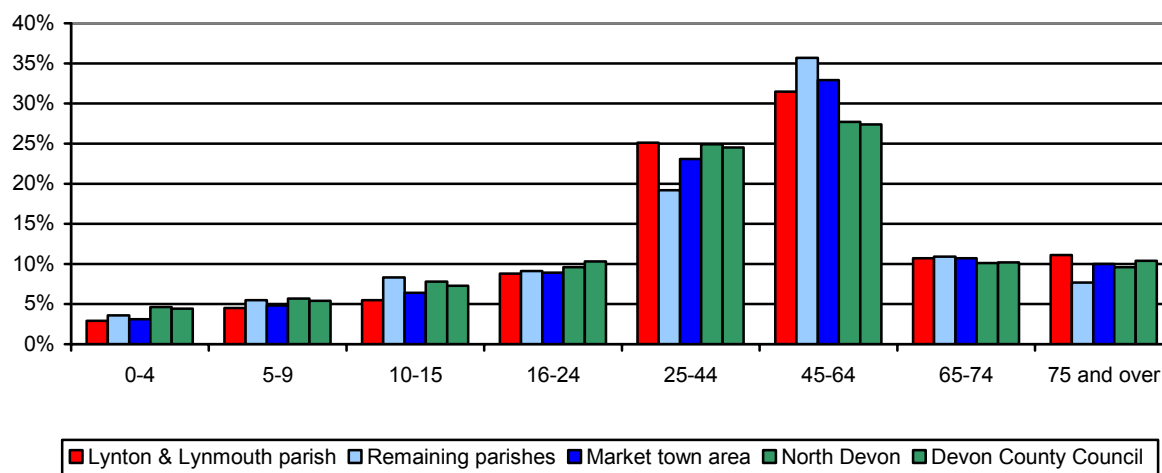
Although there has been some population growth since 1991 in the area, the rate is much slower than the county and district rates.

The proportion of people from minority ethnic groups in the market town area is about average for Devon.

The level of households occupied by individuals in the market town area as a whole is about average but quite low in remaining parishes where the figure is 22%.

### Percentage of population by age band (2004)

Area	Total population	Age band							
		0-4	5-9	10-15	16-24	25-44	45-64	65-74	75 and over
Lynton & Lynmouth parish	1,716	2.9%	4.5%	5.5%	8.8%	25.1%	31.5%	10.7%	11.1%
Remaining parishes	843	3.6%	5.5%	8.3%	9.1%	19.2%	35.7%	10.9%	7.7%
Market town area	2,559	3.1%	4.8%	6.4%	8.9%	23.1%	32.9%	10.7%	10.0%
North Devon	95,121	4.6%	5.7%	7.8%	9.6%	24.9%	27.7%	10.1%	9.6%
Devon County Council	742,911	4.4%	5.4%	7.3%	10.3%	24.5%	27.4%	10.2%	10.4%



Source: South Devon Health Informatics Service (FHSA data)

### Population change (1991 to 2004)

Area	1991	2001	2004	% change 1991 to 2004
Lynton & Lynmouth parish	1,658	1,509	1,716	3.5%
Remaining parishes	807	797	843	4.5%
Market town area	2,465	2,306	2,559	3.8%
North Devon	84,800	87,508	95,121	12.1%
Devon County Council	646,903	704,493	742,911	14.8%

Source: 1991 and 2001 Census, 2004 South Devon Health Informatics Service (FHSA data)

**Ethnicity (2001)**

Area	Ethnic Group				
	All People	White	% White	Black and minority ethnic	% Black and minority ethnic
Lynton & Lynmouth parish	1,509	1,499	99.3%	10	0.7%
Remaining parishes	797	791	99.2%	6	0.8%
Market town area	2,306	2,290	99.3%	16	0.7%
North Devon	87,508	86,674	99.0%	834	1.0%
Devon County Council	704,493	696,590	98.9%	7,903	1.1%
England	49,138,831	44,679,361	90.9%	4,459,470	9.1%

Source: 2001 Census

**Household composition (2001)**

Area	All households	Single person households		Households comprising more than one person	
		Number	%	Number	%
Lynton & Lynmouth parish	626	201	32.1%	425	67.9%
Remaining parishes	305	68	22.3%	237	77.7%
Market town area	931	269	28.9%	662	71.1%
North Devon	36,777	10,252	27.9%	26,525	72.1%
Devon County Council	298,574	86,890	29.1%	211,684	70.9%
England	20,451,427	6,150,264	30.1%	14,301,163	69.9%

Source: 2001 Census

# Deprivation

## Summary

No Lower Super Output Areas (LSOA) are ranked in the most deprived 25% nationally, with all three LSOAs ranked in the next 25-50% most deprived.

The principal source of deprivation data is currently The Indices of Deprivation 2004. This is a Lower Super Output Area (LSOA) level measure of multiple deprivation and is made up of seven domains. A LSOA is an area of about 1,500 people and has been devised to standardise statistical geography across the country. The seven domains are:

- Income Deprivation
- Employment Deprivation
- Health Deprivation and Disability
- Education, Skills and Training Deprivation
- Barriers to Housing and Services
- Living Environment Deprivation
- Crime

There are two supplementary Indices (Income Deprivation Affecting Children and Income Deprivation Affecting Older People).

The model which underpins the Index of Deprivation 2004 is based on the idea of distinct dimensions of deprivation which can be recognised and measured separately. These are experienced by individuals living in an area. Where possible, the indicators relate to 2001.

The information will help target policies and funding, reinforcing the Government's drive to improve the quality of life in disadvantaged communities.

There are over 32,000 LSOAs in the 2004 index, replacing the 8,500 wards used to construct the Index of Multiple Deprivation 2000. The LSOA boundaries were determined nationally with no local input.

The 2004 index was developed from academic research undertaken by Oxford University.

The table below compares the areas in Devon ranked in the most deprived 25% nationally, in terms of the number of wards in 2000 and the number of LSOAs in 2004, together with the population of these areas.

## Comparison of IMD 2000 and ID 2004

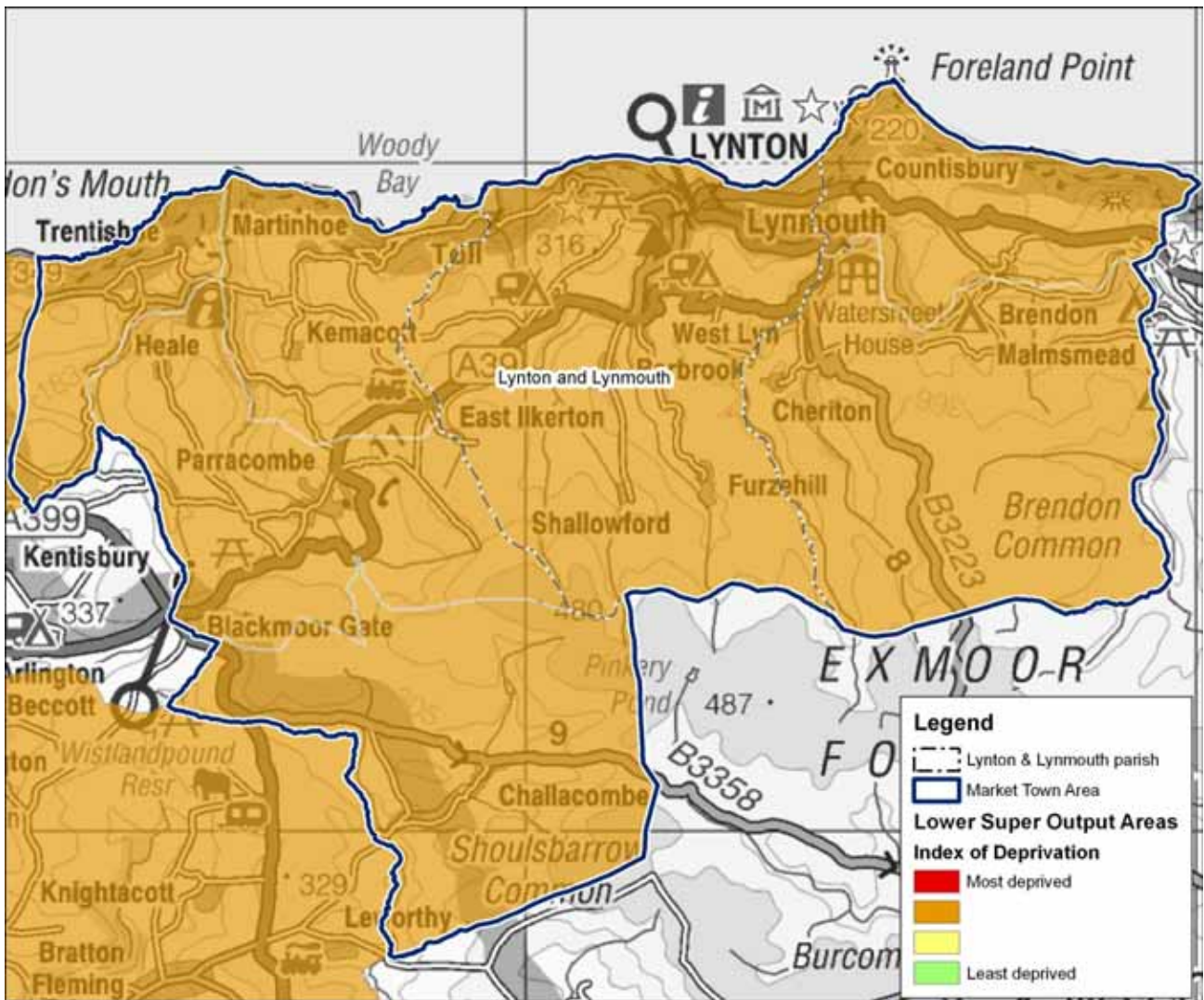
Area	IMD 2000		ID 2004	
	Number of wards	Population	Number of LSOAs	Population
East Devon	1	3,901	0	0
Exeter	3	17,070	14	22,057
Mid Devon	0	0	1	1,652
North Devon	6	21,409	10	14,158
South Hams	1	5,458	0	0
Teignbridge	6	24,408	6	8,918
Torridge	10	22,217	3	5,731
West Devon	1	1,483	0	0
Devon County Council	28	95,946	34	52,516

Source: Office of the Deputy Prime Minister and South Devon Health Informatics Service (FHSA data)

Application of the new index reduces the population in Devon perceived to be living in the most deprived areas by around 45%. This is probably due to the addition of crime and the living environment to the index, which in both cases the area covered by Devon County Council would have scored well compared to the national average. The reduced weighting given to the access to services domain may also be a contributing factor.

There are 3 LSOAs that fall either completely or partially within the area covered by this profile. None of these is classified as being in the most deprived 25% of LSOAs nationally but they are all in the next category 25-50%.

Map of Index of Deprivation 2004



Crown Copyright. All rights reserved. Devon County Council. 100019783 2006

Source: Office of the Deputy Prime Minister

# The Local Economy

## Summary

Unemployment levels are fairly low in the area.

Economic activity rates as a whole within the market town area are slightly high compared to the county and national averages. Self-employment levels in the area are significantly higher than the county and national averages and may well reflect those involved in farming and tourism.

Claim rates for Income Support are overall quite low. Claim rates for Job Seekers Allowance follow a similar trend except that the market town area is slightly higher than the county figure.

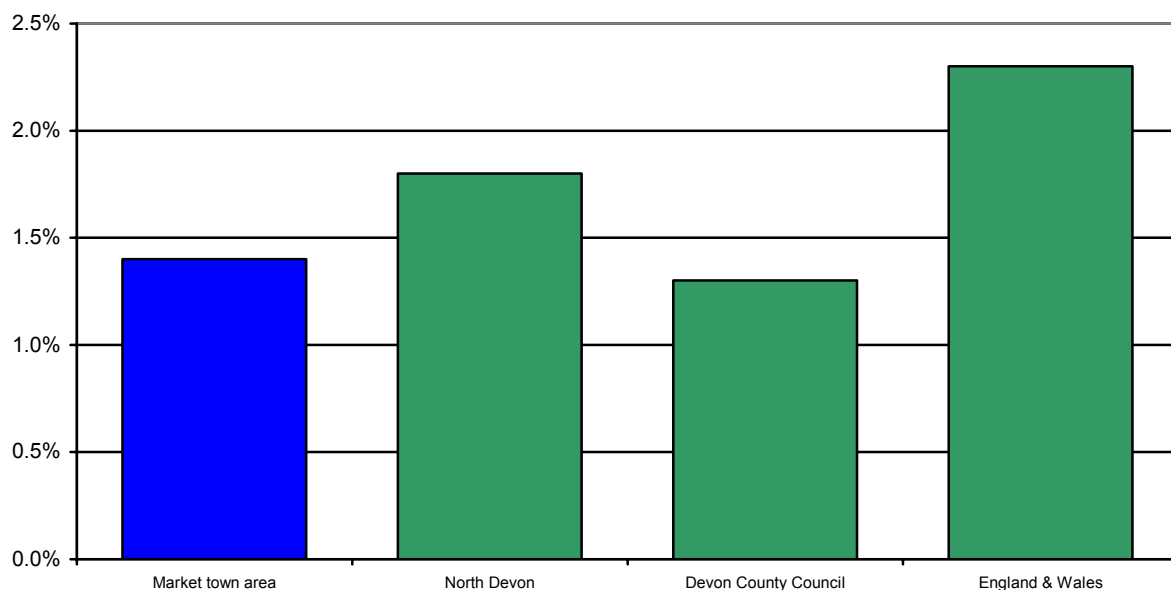
The number of households with an annual income of less than £20,000 is about average in the overall market town area but very high in Lynton & Lynmouth parish (almost 50%) and quite low in the remaining parishes.

The percentage of employment by industry sector of those living in the market town area highlights the main sectors of employment as hotels & catering, wholesale & retail trade and agriculture, hunting & forestry. These represent more than 40% of employment in the market town area.

The largest numbers of businesses in the market town area are involved in hotels and restaurants, health & social work and wholesale & retail trade and with about 75% of businesses involved in these sectors.

## Unemployment as a proportion of working age resident population (April 2005)

Area	Number unemployed	% working age population
Market town area	15	1.4%
North Devon	923	1.8%
Devon County Council	5,445	1.3%
England & Wales	752,758	2.3%



Note: Not possible to differentiate between town and rural area for Lynton & Lynmouth area

Source: Office for National Statistics

**Economic activity (2001)**

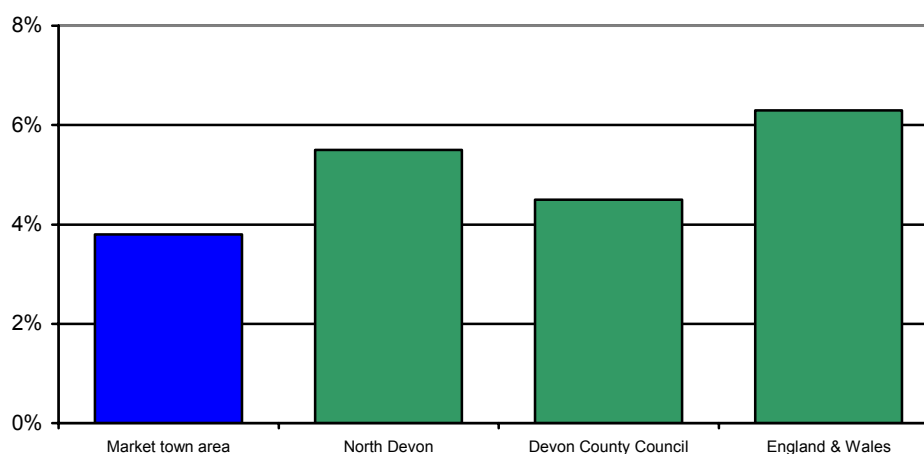
Area	People aged 16 to 74	Total economically active	Economically active	Employed part-time	Employed full-time	Self-employed	Unemployed	Students
Lynton & Lynmouth parish	1,143	800	70.0%	17.4%	40.9%	34.9%	5.1%	1.8%
Remaining parishes	599	404	67.4%	15.1%	34.4%	46.5%	2.5%	1.5%
Market town area	1,742	1,204	69.1%	16.6%	38.7%	38.8%	4.2%	1.7%
North Devon	62,384	41,484	66.5%	20.9%	50.6%	20.7%	5.0%	2.8%
Devon County Council	503,212	328,379	65.3%	20.5%	52.6%	19.3%	3.9%	3.6%
England	35,532,091	23,756,707	66.9%	17.7%	61.0%	12.4%	5.0%	3.9%

Source: 2001 Census

The data below relating to Income Support and Job Seekers Allowance are based on a best fit of Middle Super Output Areas (MSOAs). One MSOA forms a best fit for the market town area.

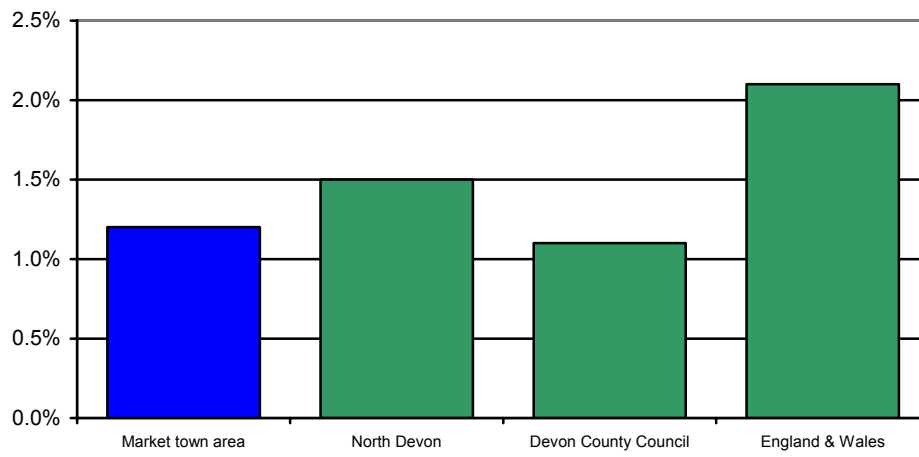
**Income Support and Job Seekers Allowance claim rates (2004)**

Area	Income Support			Jobseekers Allowance		
	Population aged 16 to 59	All claimants	Claim rate	Population aged 16 to 64	All claimants	Claim rate
Market town area	3,022	115	3.8%	3,419	40	1.2%
North Devon	48,072	2,650	5.5%	53,296	805	1.5%
Devon County Council	388,926	17,530	4.5%	429,574	4,765	1.1%
England	30,694,973	1,946,020	6.3%	33,239,665	689,810	2.1%

**Income Support claim rates (2004)**

Source: Department for Work and Pensions

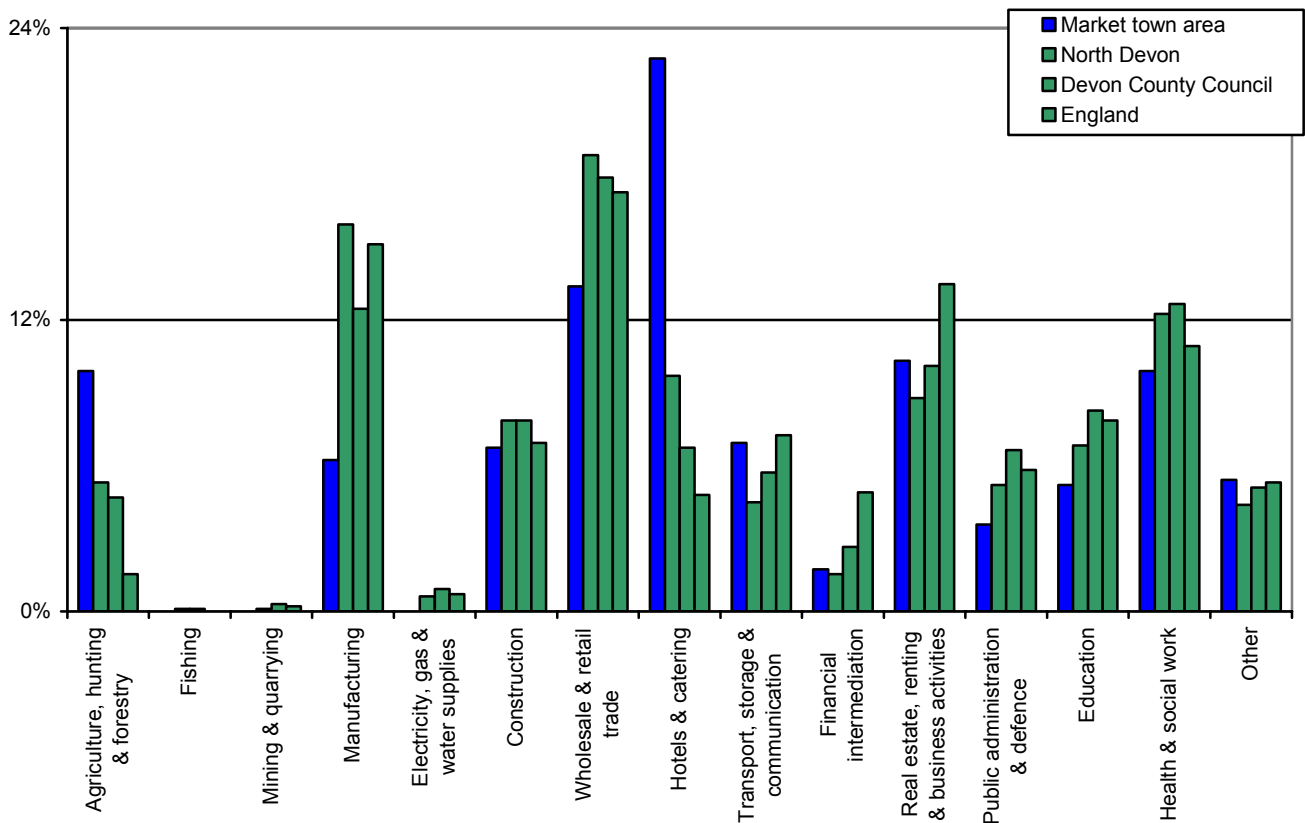
## Job Seeker Allowance claim rates (2004)



Source: Department for Work and Pensions

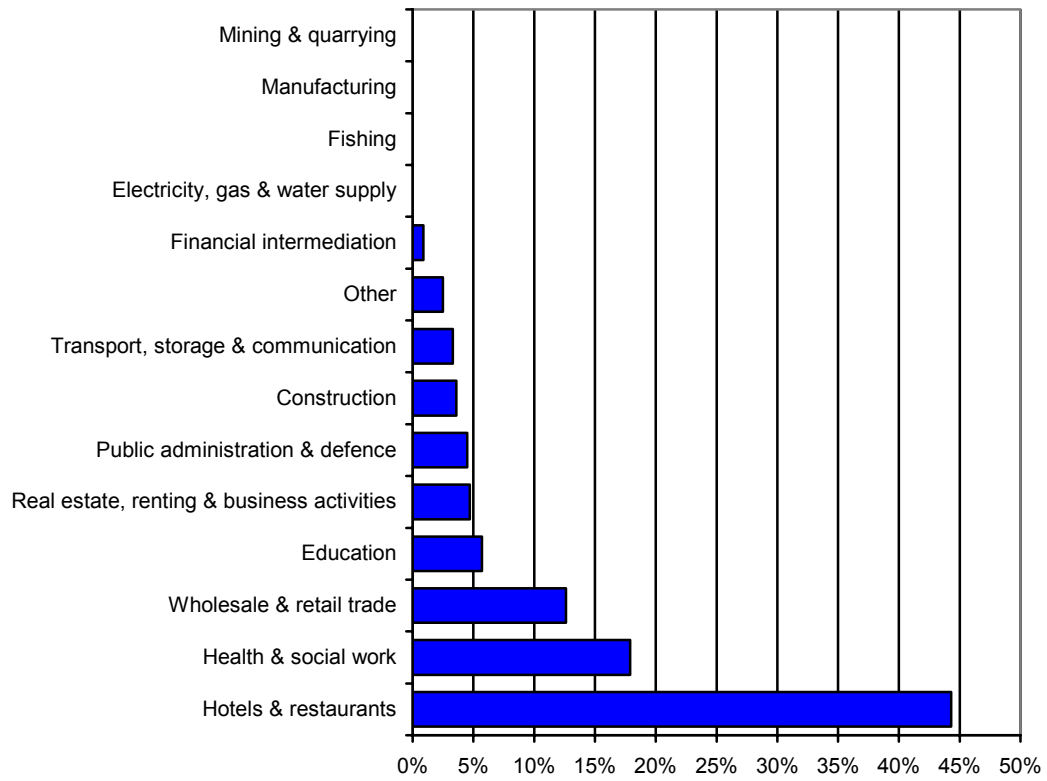
## Employment of people living in the area by industry (2001)

Sector	Lynton & Lynmouth parish	Remaining parishes	Market town area	North Devon	Devon County Council	England
Agriculture, hunting & forestry	5.2%	18.2%	9.7%	5.2%	4.6%	1.5%
Fishing	0.0%	0.0%	0.0%	0.1%	0.1%	0.0%
Mining & quarrying	0.0%	0.0%	0.0%	0.1%	0.3%	0.2%
Manufacturing	5.8%	6.6%	6.1%	15.6%	12.2%	14.8%
Electricity, gas & water supplies	0.0%	0.0%	0.0%	0.6%	0.9%	0.7%
Construction	7.0%	5.8%	6.6%	7.7%	7.7%	6.8%
Wholesale & retail trade	14.3%	10.9%	13.1%	18.4%	17.5%	16.9%
Hotels & catering	25.8%	15.7%	22.3%	9.5%	6.6%	4.7%
Transport, storage & communication	7.3%	5.8%	6.8%	4.4%	5.6%	7.1%
Financial intermediation	1.3%	2.3%	1.7%	1.5%	2.6%	4.8%
Real estate, renting & business activities	10.2%	9.9%	10.1%	8.6%	9.9%	13.2%
Public administration & defence	3.7%	3.0%	3.5%	5.1%	6.5%	5.7%
Education	3.3%	8.6%	5.1%	6.7%	8.1%	7.7%
Health & social work	11.3%	6.8%	9.7%	12.0%	12.4%	10.7%
Other	4.8%	6.3%	5.3%	4.3%	5.0%	5.2%



Source: 2001 Census

## Percentage of businesses in profile area by Standard Industrial Classification (2004)



Source: Annual Business Inquiry

## Skills and Learning

### Summary

Generally children living in Lynton & Lynmouth market town area achieve significantly high results at Key Stage 2. Results in English in Lynton & Lynmouth parish were an exception and were quite low.

Achievement rates for GCSEs at grades A\* to C were also slightly better than average in the Lynton & Lynmouth Market town area.

The overall level of qualification within the market town area is roughly level with the district and county averages.

### Number and percentage of pupils achieving at least Key Stage 2 Level 4 (2004)

Area	Total pupils	English		Maths		Science	
		Number	% pupils	Number	% pupils	Number	% pupils
Lynton & Lynmouth parish	12	8	66.7%	10	83.3%	12	100.0%
Remaining parishes	7	6	85.7%	6	85.7%	5	71.4%
Market town area	19	14	73.7%	16	84.2%	17	89.5%
North Devon	1,113	869	78.1%	849	76.3%	987	88.7%
Devon County Council	7,781	6,030	77.5%	5,766	74.1%	6,803	87.4%
England			75.0%		73.0%		86.0%

Source: Children and Young People's Services, Devon County Council

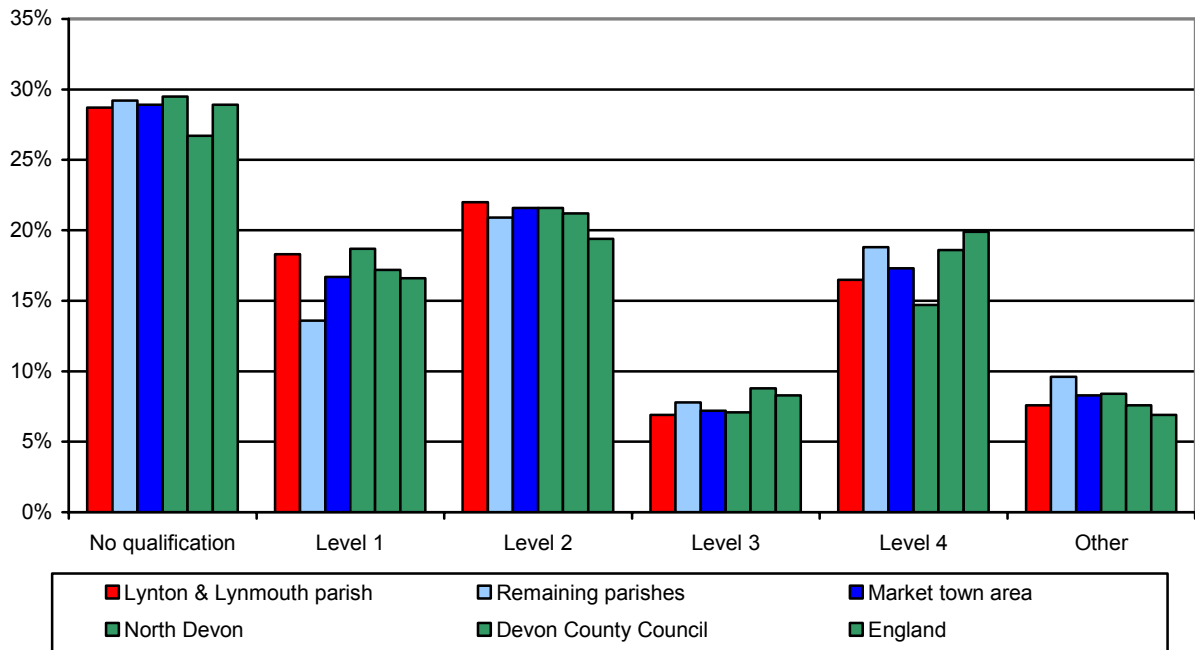
### GCSE attainment (2002/03)

Area	Number of students	Students achieving five or more A*-C	% students achieving five or more A*-C	Students achieving five or more A*-G	% students achieving five or more A*-G
Lynton & Lynmouth parish	12	8	66.7%	11	91.7%
Remaining parishes	9	6	66.7%	8	88.9%
Market town area	21	14	66.7%	19	90.5%
North Devon	1,000	514	51.4%	936	93.6%
Devon County Council	6,955	3,741	52.6%	6,484	90.6%
England			52.9%		88.8%

Source: Children and Young People's Services, Devon County Council

## Highest level of qualification (2001)

Area	No qualification s	Level 1	Level 2	Level 3	Level 4	Other
Lynton & Lynmouth parish	28.7%	18.3%	22.0%	6.9%	16.5%	7.6%
Remaining parishes	29.2%	13.6%	20.9%	7.8%	18.8%	9.6%
Market town area	28.9%	16.7%	21.6%	7.2%	17.3%	8.3%
North Devon	29.5%	18.7%	21.6%	7.1%	14.7%	8.4%
Devon County Council	26.7%	17.2%	21.2%	8.8%	18.6%	7.6%
England	28.9%	16.6%	19.4%	8.3%	19.9%	6.9%



Source: 2001 Census

### Note:

Level 1: 1+'O' level passes, 1 CSE/GCSE any grades, NVQ level 1, Foundation GNVQ.

Level 2: 5+'O' level passes, 5+CSE's (grade A-C), School Certificate, 1+'A' levels/'AS' levels, NVQ level 2, Intermediate GNVQ.

Level 3: 2+'A' levels, 4+'AS' levels, Higher School Certificate, NVQ level 3, Advanced GNVQ.

Level 4: First degree, Higher degree, NVQ levels 4 and 5, HNC, HND, Qualified Teacher Status, Qualified, Medical Doctor, Qualified Dentist, Qualified Nurse, Midwife, Health Visitor.

## Health, Care and Wellbeing

### Summary

Incapacity Benefit and Severe Disablement Allowance claim rates are slightly below average in the Lynton & Lynmouth market town area as are claim rates for Disability Living Allowance.

Overall the rate of people living with a limiting long-term illness is slightly lower than average. The same trend follows for the general health indicator.

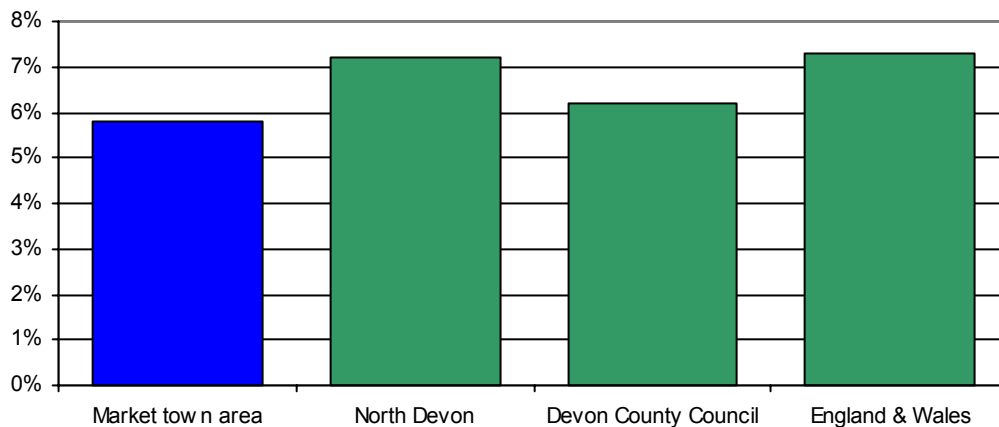
The data below relating to Income Support and Job Seekers Allowance are based on a best fit of Middle Super Output Areas (MSOAs). One MSOA forms a best fit for the market town area.

### Incapacity Benefit & Severe Disablement Allowance and Disability Living Allowance claimant rates (2004)

Area	Incapacity Benefit & Severe Disablement Allowance			Disability Living Allowance		
	Population aged 16 to 64	All claimants	Claim rate	Total population	All claimants	Claim rate
Market town area	3,419	200	5.8%	5,569	190	3.4%
North Devon	53,296	3,815	7.2%	87,525	3,490	4.0%
Devon County Council	429,574	26,670	6.2%	704,510	25,645	3.6%
England & Wales	33,239,665	2,421,940	7.3%	52,042,019	2,341,615	4.5%

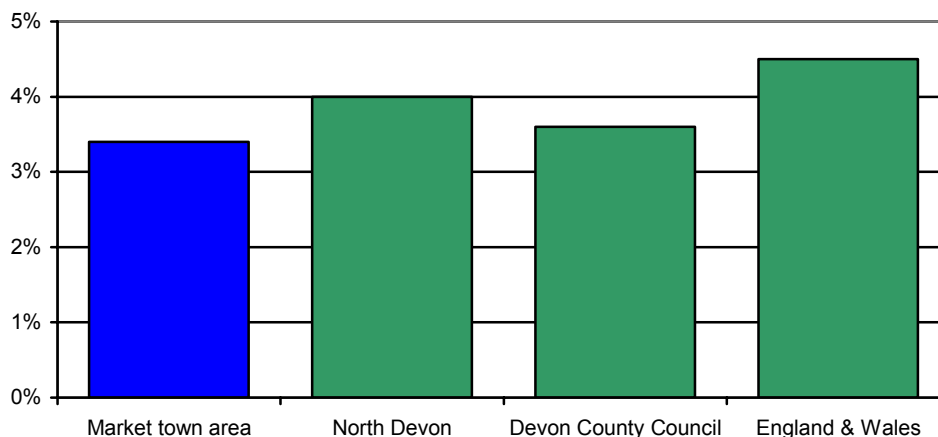
Source: Department for Work and Pensions

### Incapacity Benefit and Severe Disablement Allowance claimant rates (2004)



Source: Department for Work and Pensions

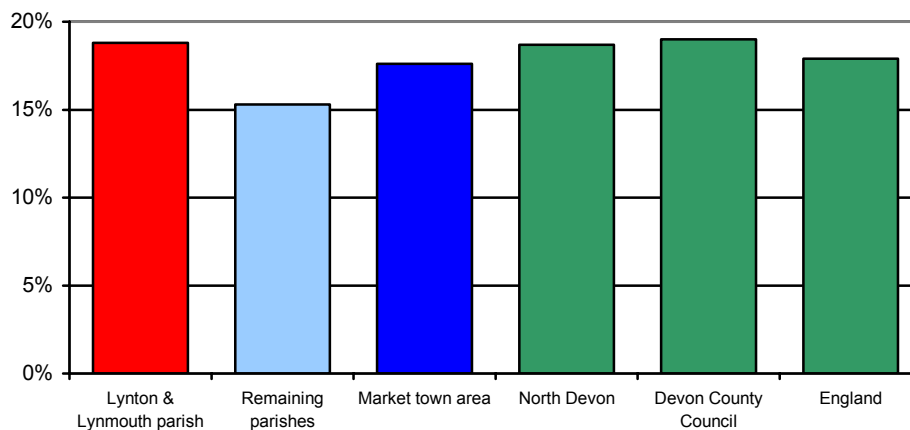
### Disability Living Allowance claimant rates (2004)



Source: Department for Work and Pensions

## Percentage of people living with a limiting long-term illness (2001)

Area	All people	People living with a limiting long-term illness	% people living with a limiting long-term illness
Lynton & Lynmouth parish	1,513	284	18.8%
Remaining parishes	795	122	15.3%
Market town area	2,308	406	17.6%
North Devon	87,508	16,377	18.7%
Devon County Council	704,493	133,756	19.0%
England	49,138,831	8,809,194	17.9%



Source: 2001 Census

## General Health (2001)

Area	All People	People describing their health as good or fairly good		People describing their health as not good	
		Number	%	Number	%
Lynton & Lynmouth parish	1,513	1,388	91.7%	125	8.3%
Remaining parishes	795	744	93.6%	51	6.4%
Market town area	2,308	2,132	92.4%	176	7.6%
North Devon	87,508	79,833	91.2%	7,675	8.8%
Devon County Council	704,493	643,988	91.4%	60,505	8.6%
England	49,138,831	44,702,955	91.0%	4,435,876	9.0%

Source: 2001 Census

## Older People

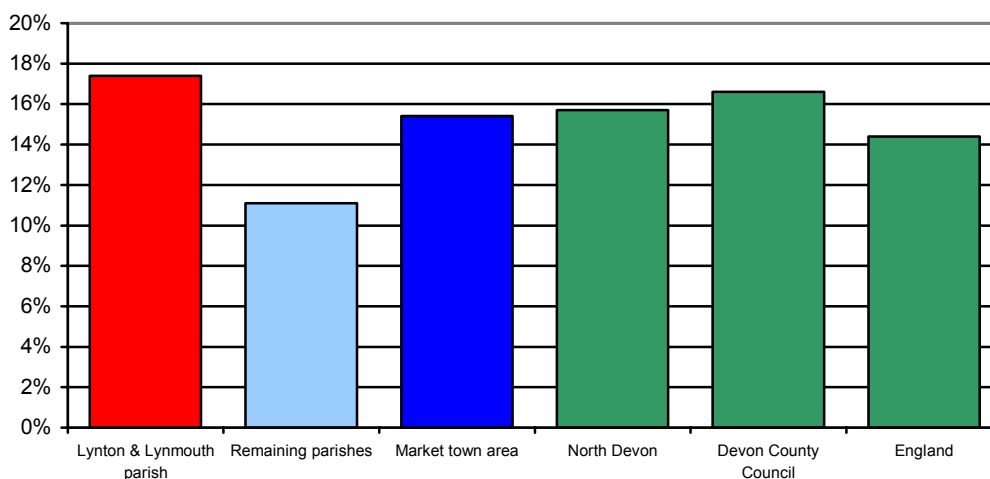
### Summary

The level of households occupied by lone pensioners in Lynton & Lynmouth parish is quite high with about 17% of households though the remaining parishes are quite low.

The rate of Social Services clients is about average in the overall market town area.

### Percentage of lone pensioner households (2001)

Area	Total households	Households occupied by lone pensioners	% households occupied by lone pensioners
Lynton & Lynmouth parish	626	109	17.4%
Remaining parishes	305	34	11.1%
Market town area	931	143	15.4%
North Devon	36,777	5,764	15.7%
Devon County Council	298,576	49,466	16.6%
England	20,451,427	2,939,465	14.4%



Source: 2001 Census.

### Number of Social Services clients per 1,000 population (2004)

Area	Clients by age group per 1,000 population of the same age group			
	50-64	65-74	75-84	85 and over
Lynton & Lynmouth parish	2.4	38.3	214.3	588.2
Remaining parishes	12.3	43.5	38.5	153.8
Market town area	6.0	40.0	166.7	500.0
North Devon	15.3	40.3	150.8	517.7
Devon County Council	14.9	40.6	142.0	460.3

Source: Adult and Community Services, Devon County Council

## Children and Young People

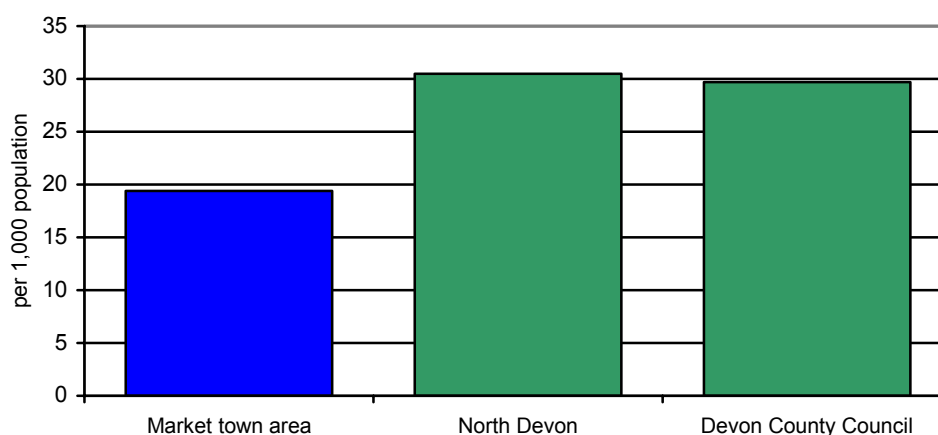
### Summary

The proportion of children in need is below average.

The proportion of young offenders is roughly level with the district and county averages.

### Children in need aged 0 to 17 years per 1,000 population aged 0 to 17 years (2003/04)

Area	Number of children aged 0 to 17	Number of children in need aged 0 to 17	Children in need aged 0 to 17 per 1,000 population aged 0 to 17
Market town area	413	8	19.4
North Devon	19,636	598	30.5
Devon County Council	145,459	4,317	29.7



Note: Numbers too small to differentiate between town and rural area for Lynton & Lynmouth area

Source: Children and Young People's Services, Devon County Council

### Young offenders aged 10 to 17 years per 1,000 population aged 10 to 17 years (2000 to 2002)

Area	2000	2001	2002
Market town area	12.9	26.7	36.8
North Devon	19.4	22.7	27.6
Devon County Council	14.2	20.0	19.3

Note: Data based on wards – not possible to differentiate between town and rural area for Lynton & Lynmouth area

Source: Youth Offending Team

## Community Safety

### Summary

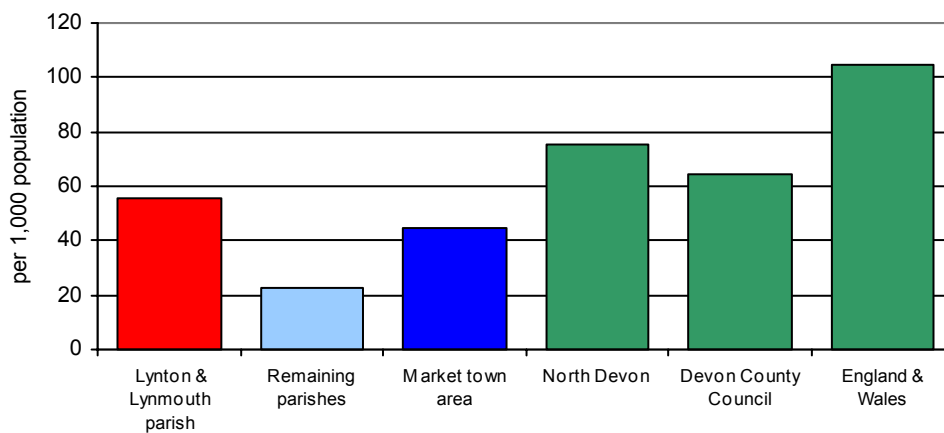
The market town area is generally below the county figures in all the crime categories where the data is viable.

Crime rates outside Lynton & Lynmouth are significantly lower than most comparators where data is available.

Data comprises addressable data only, and as such rates are based on approx 92% of all crime.

### Total crime per 1,000 population (2004/05)

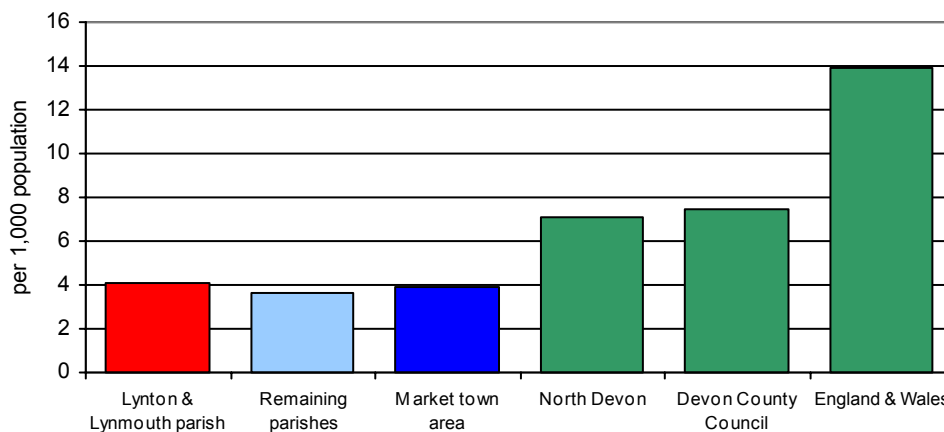
Area	Population	Total number of crimes	Crime per 1,000 population
Lynton & Lynmouth parish	1,716	95	55.4
Remaining parishes	843	19	22.5
Market town area	2,559	114	44.5
North Devon	95,121	7,185	75.5
Devon County Council	742,911	47,612	64.1
England & Wales	53,045,600	5,562,700	104.9



Source: Devon & Cornwall Constabulary (Amethyst)

## Vehicle crime per 1,000 population (2004/05)

Area	Population	Number of vehicle crimes	Vehicle crimes per 1,000 population
Lynton & Lynmouth parish	1,716	7	4.1
Remaining parishes	843	3	3.6
Market town area	2,559	10	3.9
North Devon	95,121	677	7.1
Devon County Council	742,911	5,594	7.5
England & Wales	53,045,600	738,500	13.9



Source: Devon & Cornwall Constabulary (Amethyst)

## Violent crime per 1,000 population (2004/05)

Area	Population	Number of violent crimes	Violent crimes per 1,000 population
Lynton & Lynmouth parish	1,716	n/a	n/a
Remaining parishes	843	n/a	n/a
Market town area	2,559	19	7.4
North Devon	95,121	1,597	16.8
Devon County Council	742,911	10,138	13.6
England & Wales	53,045,600	1,185,700	22.4



Note: It is not possible to provide a breakdown for Lynton & Lynmouth area due to small counts.

Source: Devon & Cornwall Constabulary (Amethyst)

**Drug offences per 1,000 population (2004/05)**

Area	Population	Number of drug offences	Drug offences per 1,000 population
Lynton & Lynmouth parish	1,716	n/a	n/a
Remaining parishes	843	n/a	n/a
Market town area	2,559	n/a	n/a
North Devon	95,121	268	2.8
Devon County Council	742,911	1,492	2.0
England & Wales	53,045,600	142,300	2.7

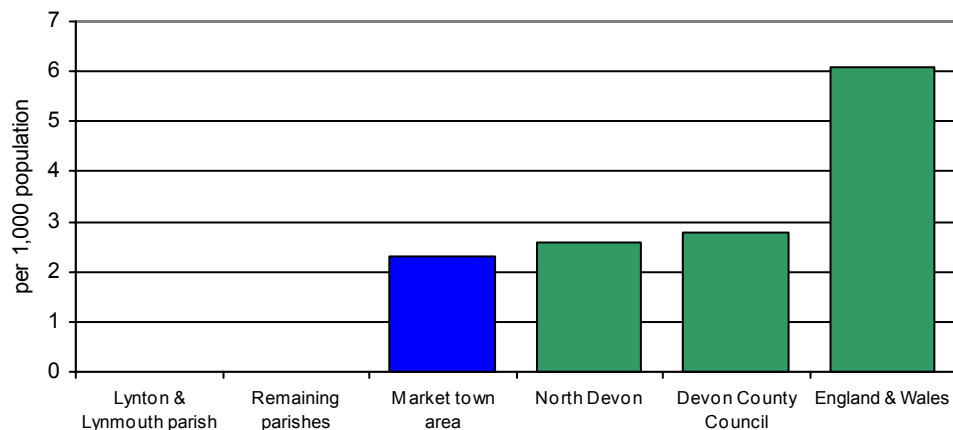


Note: It is not possible to provide a breakdown for Lynton & Lynmouth area due to small counts.

Source: Devon & Cornwall Constabulary (Amethyst)

**Dwelling burglaries per 1,000 population (2004/05)**

Area	Population	Number of dwelling burglaries	Dwelling burglaries per 1,000 population
Lynton & Lynmouth parish	1,716		
Remaining parishes	843		
Market town area	2,559	6	2.3
North Devon	95,121	247	2.6
Devon County Council	742,911	2,046	2.8
England & Wales	53,045,600	321,500	6.1



Note: It is not possible to provide a breakdown for Lynton & Lynmouth area due to small counts.

Source: Devon & Cornwall Constabulary (Amethyst)

# Housing

## Summary

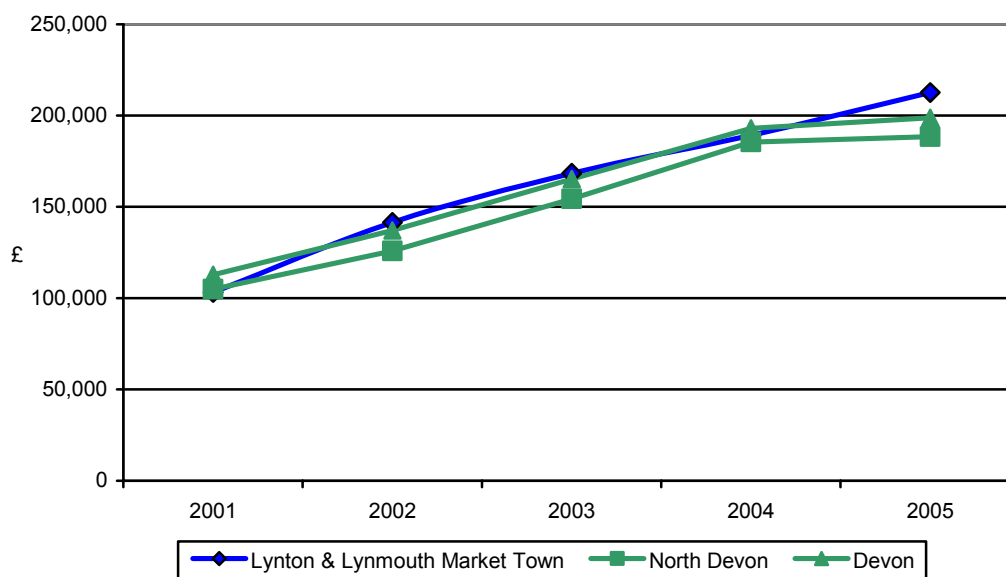
The district and county figures are quite close and the market town area has been generally slightly higher than both of them and this trend appears to be continuing.

In 2004 average house prices within the market town area were considerably higher than the district and county figures.

Tenure rates are similar to district and county comparisons.

## House price change (2001 to 2005)

Area	2001	2002	2003	2004	2005	% change 2001 - 2005
Lynton & Lynmouth parish	£104,357	£134,521	£168,340	£186,571	£212,595	103.7%
Remaining parishes	£58,500	£203,580	n/a	£217,500	n/a	n/a
Market town area	£103,181	£141,427	£168,340	£189,096	£212,595	106.0%
North Devon	£104,943	£125,794	£154,310	£185,554	£188,522	79.6%
Devon County Council	£112,752	£136,982	£165,267	£193,056	£198,835	76.3%



Source: Land Registry

Note: Data comprises sales between April and December 2001, all sales in 2002, 2003 and 2004 and from January to March 2005.

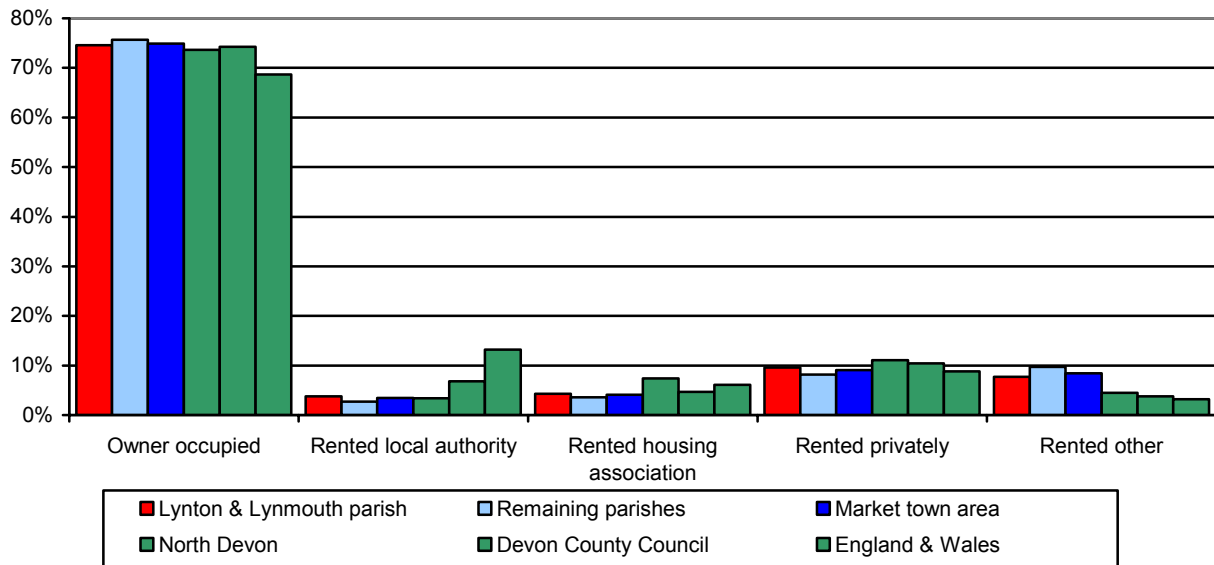
## Average house price (2004)

Area	Detached	Semi-Detached	Terraced	Flat/Maisonette	Overall
Lynton & Lynmouth parish	£316,600	£254,167	£174,570	£147,583	£186,571
Remaining parishes	£207,500	£230,000	£225,000		£217,500
Market town area	£285,429	£250,714	£179,155	£147,583	£189,096
North Devon	£250,176	£175,443	£148,058	£124,173	£185,554
Devon County Council	£266,940	£180,252	£157,985	£138,260	£193,045
England & Wales	£270,745	£162,379	£136,862	£168,298	£178,504

Source: Land Registry

### Percentage of dwellings by tenure (2001)

Area	All households	Owner occupied	Rented accommodation			
			Local authority	Housing association	Private	Other
Lynton & Lynmouth parish	625	74.6%	3.8%	4.3%	9.6%	7.7%
Remaining parishes	329	75.7%	2.7%	3.6%	8.2%	9.7%
Market town area	954	74.9%	3.5%	4.1%	9.1%	8.4%
North Devon	36,776	73.6%	3.4%	7.4%	11.1%	4.5%
Devon County Council	298,576	74.3%	6.8%	4.7%	10.4%	3.8%
England & Wales	20,451,427	68.7%	13.2%	6.1%	8.8%	3.2%



Source: 2001 Census

# Transport

## Summary

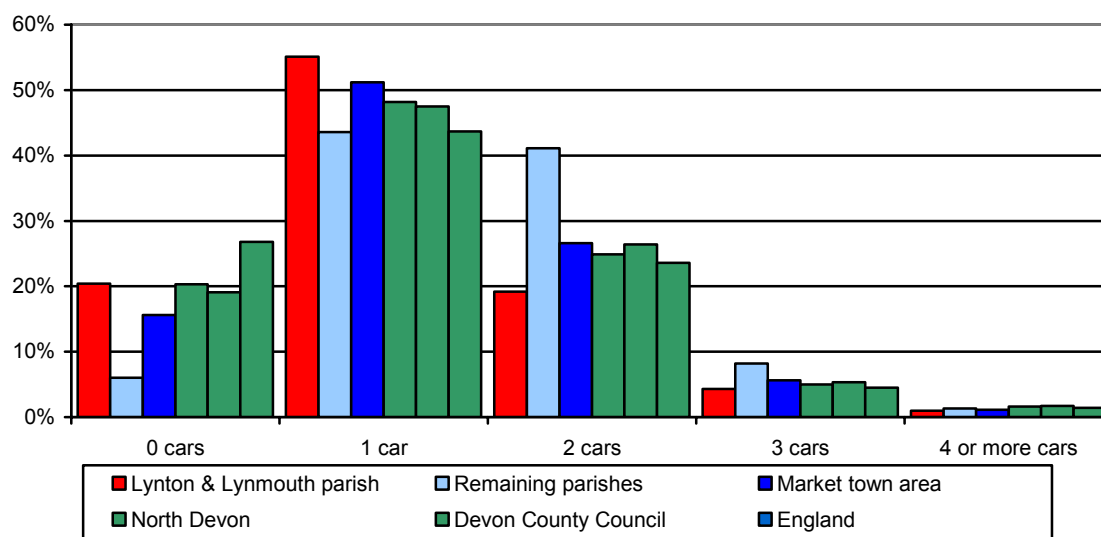
There are high levels of car ownership in the area with the remaining parishes having just above 50% of households owning 2 or more cars/vans and only 6% having none.

Car/Van use for travelling to work is very low at over 37% and this is mainly due to the high numbers that work from home. Lynton & Lynmouth parish also has a large percentage travelling to work by foot or bicycle but public transport usage is low.

Access to services by public transport seems to be about average except for getting to shops.

## Car ownership (2001)

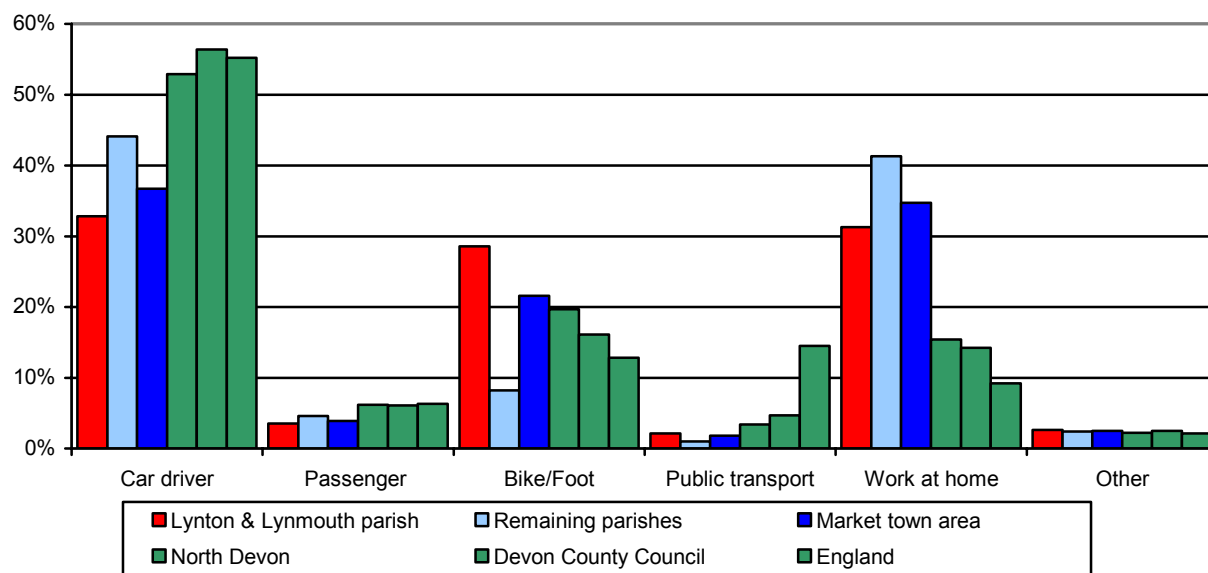
Area	All households	Households with:				
		No car	One car	Two cars	Three cars	Four or more cars
Lynton & Lynmouth parish	626	20.4%	55.1%	19.2%	4.3%	1.0%
Remaining parishes	319	6.0%	43.6%	41.1%	8.2%	1.3%
Market town area	945	15.6%	51.2%	26.6%	5.6%	1.1%
North Devon	36,776	20.3%	48.2%	24.9%	5.0%	1.6%
Devon County Council	298,576	19.1%	47.5%	26.4%	5.3%	1.7%
England	20,451,427	26.8%	43.7%	23.6%	4.5%	1.4%



Source: 2001 Census

**Mode of travel to work (2001)**

Area	All 16-74 year olds in Employment	Percentage of population by mode of travel to work					
		By car or van	Passenger in a car or van	On a bike or by foot	By public transport	Work from home	Other
Lynton & Lynmouth parish	752	32.8%	3.5%	28.6%	2.1%	31.3%	1.7%
Remaining parishes	390	44.1%	4.6%	8.2%	1.0%	41.3%	0.8%
Market town area	1,142	36.7%	3.9%	21.6%	1.8%	34.7%	1.4%
North Devon	39,316	52.9%	6.2%	19.7%	3.4%	15.4%	2.4%
Devon County Council	314,267	56.4%	6.1%	16.1%	4.7%	14.2%	2.5%
England	23,627,754	55.2%	6.3%	12.8%	14.5%	9.2%	2.1%



Source: 2001 Census

The data below relating to accessibility by public transport are based on a best fit of Lower Super Output Areas (LSOAs).

**Accessibility by public transport (2005)**

Area	Number of households	Percentage of households that can access:		
		Acute hospital within 60 minutes	GP within 30 minutes	Shops within 30 minutes
Lynton & Lynmouth area	725	86.6%	86.6%	0.0%
Remaining area	1,173	66.0%	38.4%	28.5%
Market town area	1,898	73.9%	56.8%	17.6%
North Devon	36,820	78.9%	85.0%	84.2%
Devon County Council	298,578	66.7%	86.6%	85.2%
England	17,436,116	82.8%	95.2%	94.4%

Source: Department for Transport

Note: Acute hospitals are establishments which provide at least minimal medical, surgical or obstetrical services for inpatient treatment and/or care, and which provide round-the-clock comprehensive qualified nursing service as well as other necessary professional services. Most patients require a relatively short stay.

# The Environment – Landscape

## Main Issues

In 2002 Devon County Council undertook and published a landscape appraisal of the county which included a landscape character assessment. The result of this assessment was the division of the County into 32 Landscape Character Zones. The Lynton and Lynmouth market town area contains two Landscape Character Zones.

## Landscape Character

Landscape character is defined as a distinct and recognisable pattern of elements that occur consistently in a particular type of landscape. Character makes each part of the landscape distinct, and gives each its particular sense of place.

Landscape character has an important role to play in that it informs the Devon County Structure Plan's fundamental landscape policy (CO1), requiring that development should be informed by and sympathetic to the landscape character of the area.

In 2002 Devon County Council undertook and published a landscape appraisal of the County which included a landscape character assessment. The result of this assessment was the division of the County into 32 Landscape Character Zones (LCZs), each with their own description and distinctive key characteristic features. The Holsworthy market town area contains parts of two of these LCZs; some of their key characteristics are outlined below.

## Exmoor and North Devon High Coast

**Location** - The zone occupies a relatively narrow coastal fringe along the northernmost coast of Devon from Woolacombe and Morte Point in the west to Exmoor and beyond to the county boundary with Somerset in the east. It has an average depth of only between 3 and 5km/1½ - 3 miles. This LCZ covers the northern part of the market town area.

**Designations** - The whole zone west of Combe Martin, with the exception of the town of Ilfracombe and its immediate hinterland, lies within the North Devon Area of Outstanding Natural Beauty. The whole zone within the market town area is within Exmoor National Park, reflect a landscape of national importance.

In addition, the whole zone within the market town area, with the exception only of the developed area of Lynton/Lynmouth, is designated by Devon County Council as a Coastal Preservation Area. Further, a narrow coastal strip has been defined as Heritage Coast by the Countryside Agency.

### Key Characteristic Features

- Geological strata shaping distinctive jagged features and headland landmarks.
- High cliffs rising in height to "hogsback" formations to the east.
- Hidden inlets and rocky coves.
- Steep, dramatic wooded combes with waterfalls and scree.
- Distinctive settlement pattern in sheltered combes – linear forms.
- Archaeological interest.
- Valuable ecological habitats.

## Exmoor Uplands

**Location** - The zone occupies the north-eastern corner of the County, comprising the highest parts of Exmoor in Devon, adjacent to the Somerset boundary. This LCZ covers the southern part of the market town area.

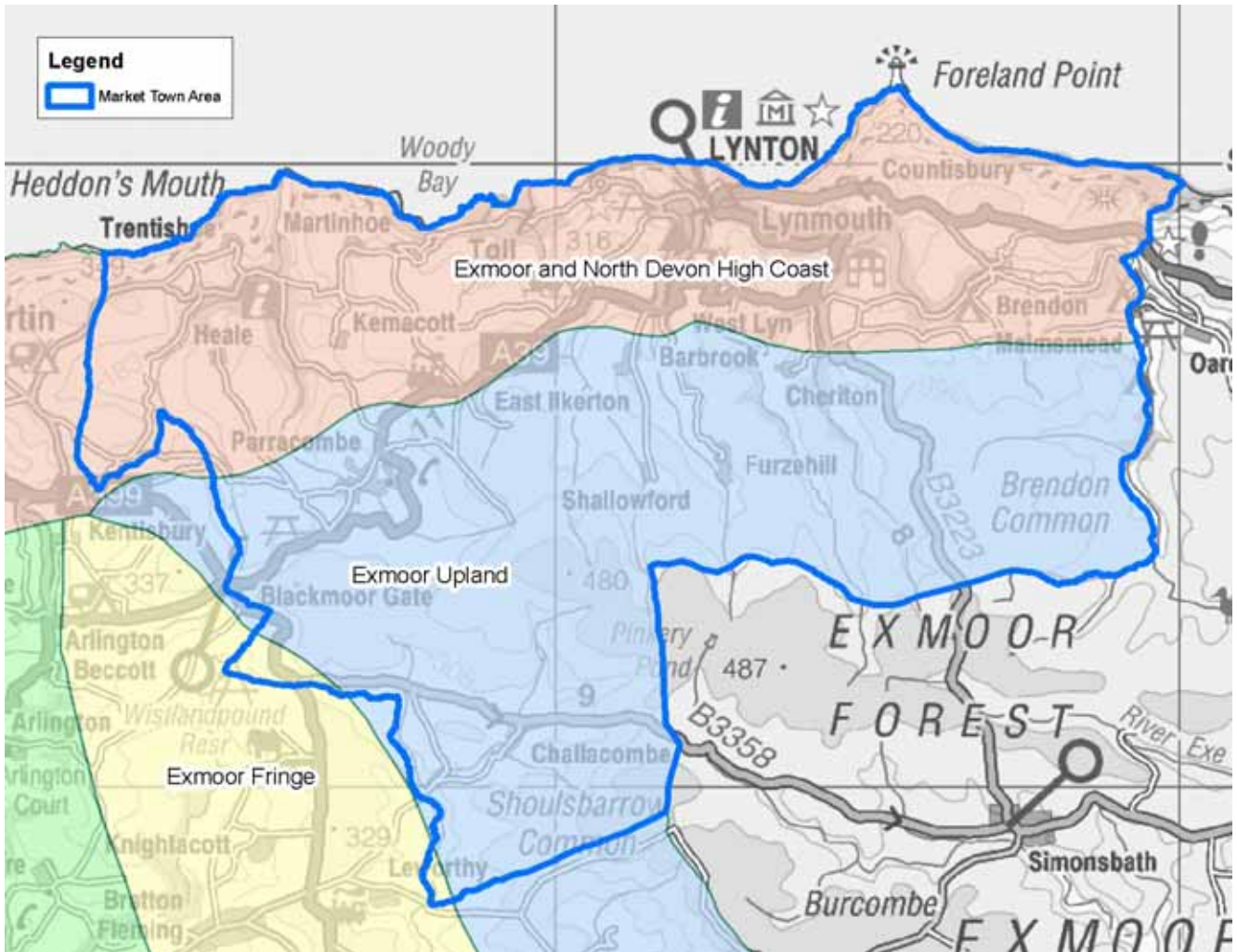
**Designations** - The zone within the market town area falls entirely within Exmoor National Park, a landscape of national significance.

### Key Characteristics Features

- Extensive grass and heather moorland.
- Broad, sweeping landforms.
- Distinctive beech hedgebanks, some stone faced.
- Old oak coppice woodlands, especially associated with valleys, rivers and upland streams.
- Fast flowing upland streams cutting across open moorland.

- Extensive views.

**Landscape Character Zones within the market town area**



Crown Copyright. All rights reserved. Devon County Council. 100019783 2006

## The Environment – Wildlife and Geology

### Summary

The last 60 years have seen many dramatic changes within the English countryside, with increasing urbanisation and shifting patterns of agriculture. Devon has fared better than most, however, being protected by its remoteness and undulating terrain.

There remains much wildlife and geology to enjoy and conserve, and many opportunities exist throughout the County to enhance the natural environment. Landowners, industry and, of course, local communities all have the chance to contribute to the conservation of Devon's rich natural history.

The area of Lynton & Lynmouth is very rich in wildlife. Upland areas support important habitats such as wet and dry heath and unimproved acidic grassland. The varied topography has allowed many areas to escape agricultural improvement and areas of unimproved neutral and marshy grassland are still relatively common. The extensive area of coastline is of considerable importance - areas of maritime heath and grassland are frequent, and the valleys support areas of ancient woodland with diverse communities of bryophytes and lichens. The area is also of considerable geological importance.

These habitats support many plants and animals. For example, moorland areas support important breeding bird communities such as merlin, ring ouzel, curlew and snipe, whilst hen harriers and golden plover are regular winter visitors. The coastal zone supports breeding wheatear and stonechat, among others, with the woods home to such species as pied flycatcher and redstart. Rare butterflies are also present in the area, including the high brown fritillary and the heath fritillary.

### Key sites

The table below contains information on the key features of some of the most important wildlife sites of this part of Devon. A map is also included to illustrate these.

Site name	Interest	Designation
Exmoor & Quantock Oakwoods	Western oakwoods, wet woodlands, bats and otters.	SAC
Exmoor Heaths	Wet and dry heaths, blanket bog, fens, Western oakwoods, and vegetated sea cliffs.	SAC
Dean Steep	Excellent exposures of Devonian age Lynton Beds and Hangman Sandstone formations.	gSSSI
Exmoor Coastal Heaths	Mosaics of heathland, mires, woodlands, scrub, acidic and coastal grassland. Important butterfly and breeding bird communities.	SSSI
Glenthorne	Accessible and revealing exposure of the Hangman Sandstone Group.	gSSSI
North Exmoor	Heathland, woodland, blanket bog and transitional habitats. Important butterfly and breeding bird communities.	SSSI
River Lyn	Unique sequence of geomorphological exposures reflecting the unusual rainfall sequence and associated flood event of August 1952.	gSSSI
Watersmeet	One of the largest areas of ancient oak woodland in the south-west. Rich communities of lower plants. Also areas of wet woodland and a diverse breeding bird community.	SSSI
West Exmoor Coast & Woods	Important areas of western oakwood and coastal heathland, a diverse breeding bird community and areas of geological interest.	SSSI

The Exmoor & Quantock Oakwoods SAC, above, consists of a number of SSSIs including, in this area, North Exmoor, Watersmeet and West Exmoor Coast & Woods.

The Exmoor Heaths SAC, above, consists of a number of SSSIs including, in this area, Exmoor Coastal Heaths, North Exmoor and West Exmoor Coast & Woods.

In addition to the table above, the Lynton & Lynmouth area has **84 County Wildlife Sites**. These mainly represent unimproved neutral and marshy grasslands and mires, together with areas of upland acid grassland and heath.

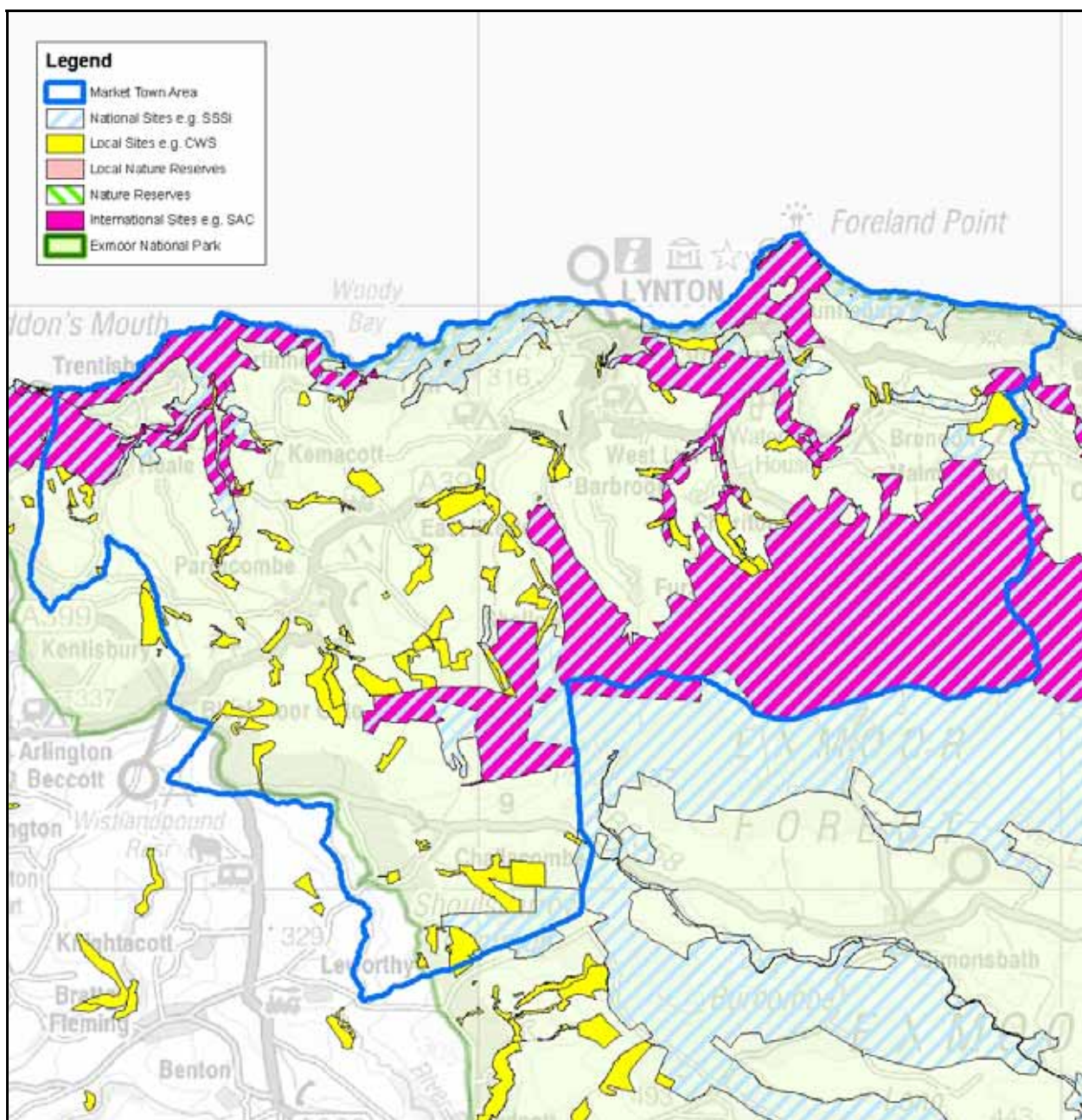
Key:

**Special Areas of Conservation (SAC):** these sites are notified because they contain species and/or habitats of European importance (listed in the Habitats Directive 1994). SAC is a statutory designation with legal implications.

**Sites of Special Scientific Interest (SSSI):** these sites are notified because of their national importance for wildlife or geological features (gSSSI, above). SSSI is a statutory designation with legal implications. SSSI status does not confer any right of access to the public.

**County Wildlife Sites (CWS):** these are sites of county importance for wildlife. CWS is not a statutory designation and does not have any legal status, though CWSs are usually included in district planning documents. CWS recognition places no formal obligation on the landowner, but may increase eligibility for land management grants. There are also County Geological Sites of a similar standing.

### Key sites in the market town area



Crown Copyright. All rights reserved. Devon County Council. 100019783 2006