

Reproduced from Ordnance Survey mapping with the permission of the Controller of Her Majesty's Stationery Office. Unauthorised reproduction infringes Crown copyright and may lead to prosecution or civil proceedings. Licence No. LA076562

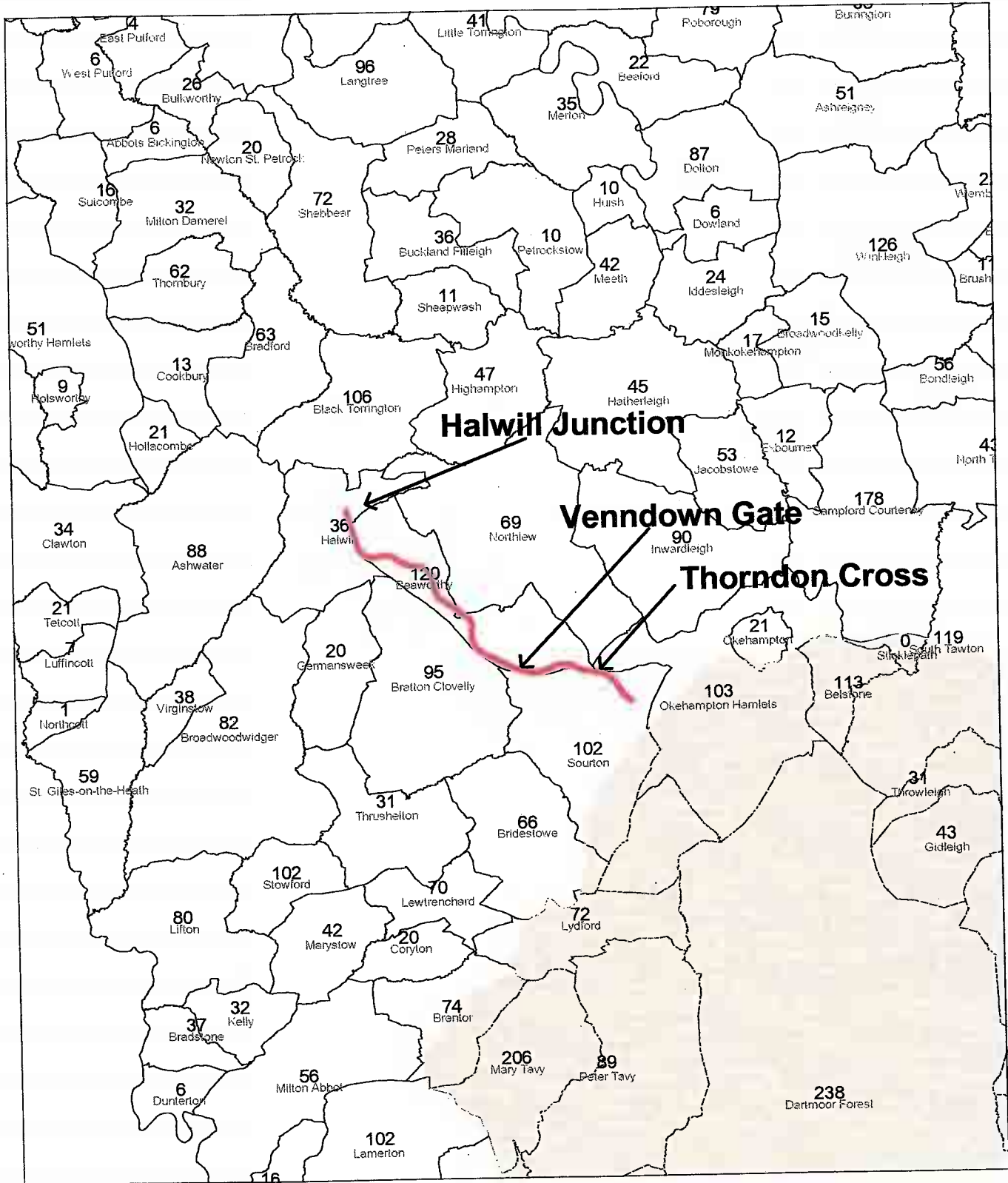
**Strategic Bridleway: Dartmoor to Halwill Junction**

Key	
Proposed Bridleway	
A Roads	
Off Road Riding Routes	
Bridleways	
Byways Open To All Traffic	

drawing number	ED/PROW/05/116
date	Sep 2005
scale	n/a
drawn by	MJJ

**Edward Chorlton**  
COUNTY ENVIRONMENT DIRECTOR



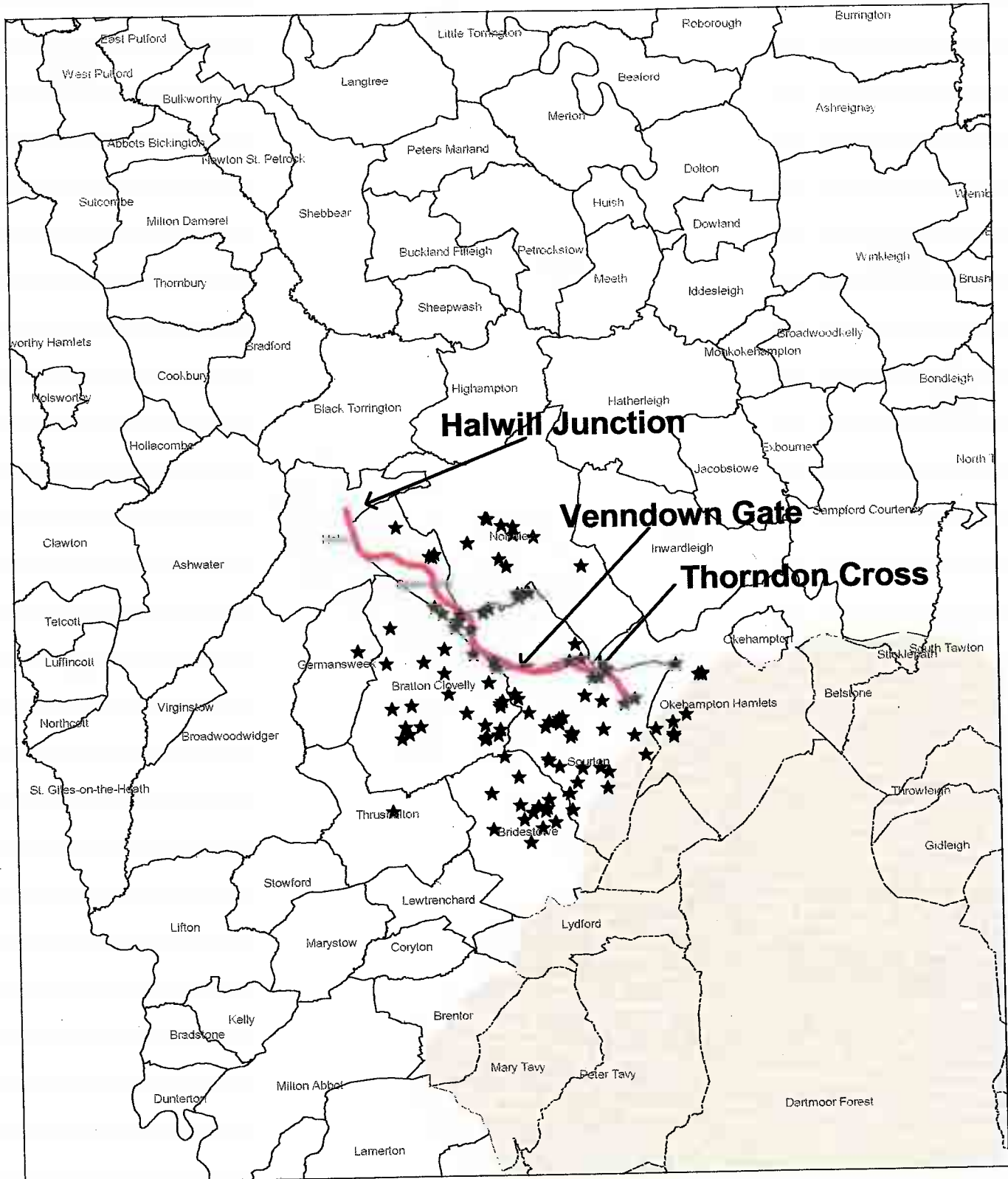


**British Horse Society Census 1997/98:  
Horses by Parish**

**Phase 1: Thorndon Cross to Venndown Gate  
Phase 2: Venndown Gate to Halwill Junction**

Scale: 1cm to 2km

Devon LAF  
13/09/05



**South West Riders Census 2003:  
Number of horses = 569**

**Phase 1: Thorndon Cross to Venndown Gate  
Phase 2: Venndown Gate to Halwill Junction**

Scale: 1cm to 2km

Devon LAF  
13/09/05