

Contents

Introduction	3
Summary.....	3
Population pyramid	4
Area definition.....	5
Background.....	5
Identifying Devon Towns	6

Introduction

This profile, one of 29 covering the area of Devon County Council has been generated by the County Council's Strategic Intelligence Unit.

Each profile provides a detailed picture of the projected population change within the area between 2006 and 2021.

It is intended that this profile will be viewed alongside the "Devon Town" baseline profile and the Mosaic "Lifestyle" profile to provide a comprehensive picture of what life is like in each Devon Town.

Summary

Overall the population of the Kingsbridge area is predicted to increase by 1,141 people between 2006 and 2021 – a rise of 6.5%.

The total number in the younger age groups (from 0 to 19) is predicted to decrease by 378 to 3,012 – a fall of 11.2%.

The 20 to 44 year age band is also predicted to see a decrease, in this case of 291 to 3,502 or 7.7%.

The 45 to 64 age group should see a decrease of 74 people (1.4%) to 5,361.

The older age groups (65 years and older) are due to see an increase in number of 1,884. This equates to a 37.6% increase over the 15 years that these projections cover and will take the population in this group to 6,897.

The largest change is predicted to be in the 70 to 74 age group with an increase of 52.1%.

Note

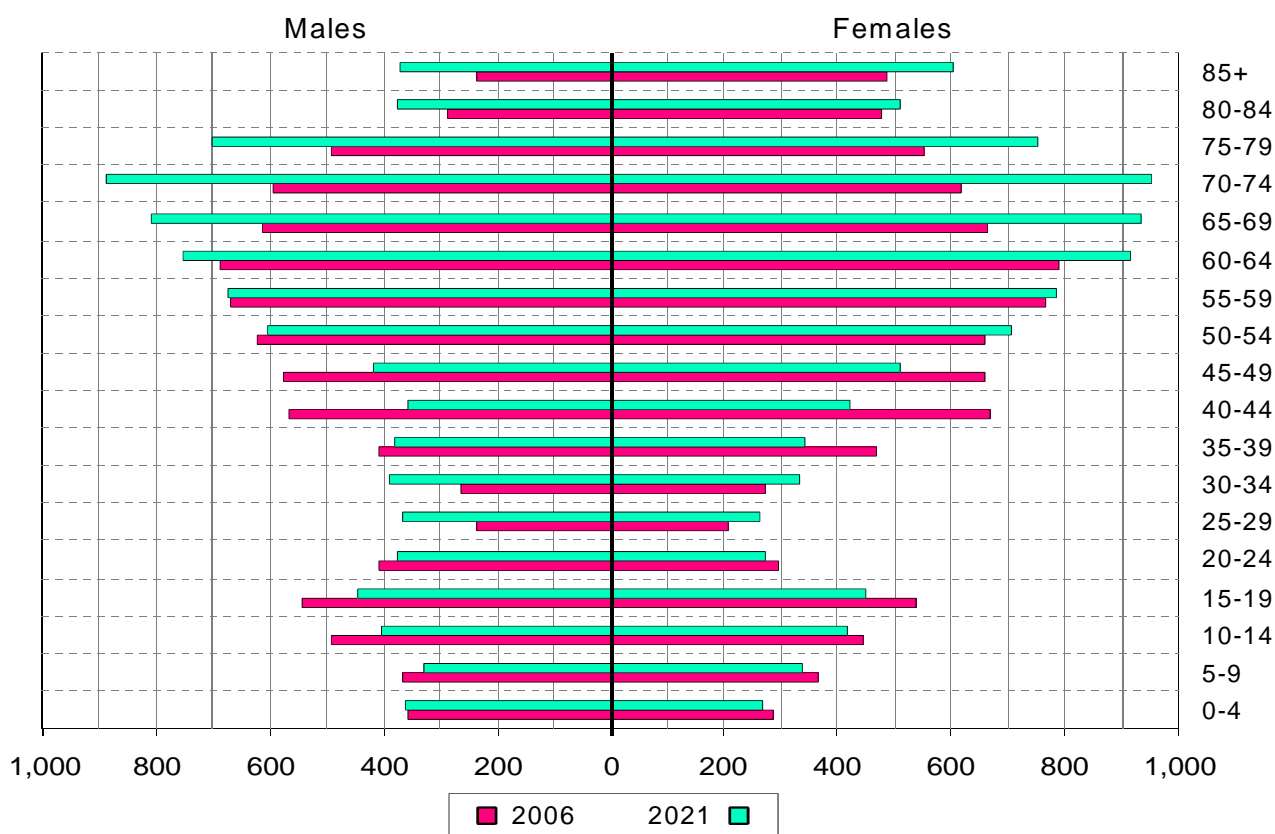
Estimates are provided in units to facilitate further calculations but they cannot be guaranteed to be as exact as the level of detail implied by these figures. We request that data are rounded to the nearest 50 if quoted in any publication, documentation or similar.

Figures may not add to totals due to rounding.

Please also refer to the Background information which supports the model on which these figures have been calculated.

Population pyramid

The following population pyramid shows the projected population breakdown by quinary age bands for 2021 along with estimated figures for 2006 for comparison.



Age band	Males			Females			Total		
	2006	2021	% change	2006	2021	% change	2006	2021	% change
0-4	357	359	0.5	286	270	-5.7	644	629	-2.2
5-9	366	329	-10.0	364	339	-6.8	729	668	-8.4
10-14	492	404	-17.8	444	417	-6.1	936	821	-12.3
15-19	543	444	-18.2	538	450	-16.4	1,081	894	-17.3
20-24	406	375	-7.6	295	272	-7.9	701	647	-7.7
25-29	236	367	55.6	206	262	26.9	442	628	42.2
30-34	262	391	49.1	275	334	21.5	537	725	35.0
35-39	409	379	-7.3	468	344	-26.5	877	723	-17.6
40-44	569	356	-37.4	668	423	-36.6	1,236	779	-37.0
45-49	574	416	-27.4	659	509	-22.7	1,232	925	-24.9
50-54	622	604	-3.0	660	705	6.8	1,283	1,309	2.1
55-59	670	676	0.8	769	785	2.0	1,439	1,460	1.5
60-64	689	751	9.1	792	916	15.6	1,481	1,667	12.6
65-69	613	809	31.9	664	934	40.8	1,277	1,743	36.5
70-74	594	890	49.8	617	951	54.3	1,210	1,841	52.1
75-79	491	701	42.7	552	752	36.3	1,043	1,453	39.3
80-84	286	373	30.6	476	511	7.3	762	885	16.0
85+	234	373	59.1	487	602	23.8	721	975	35.2
Total	8,413	8,998	7.0	9,219	9,775	6.0	17,632	18,773	6.5

Note

Estimates are provided in units to facilitate further calculations but they cannot be guaranteed to be as exact as the level of detail implied by these figures. We request that data are rounded to the nearest 50 if quoted in any publication, documentation or similar.

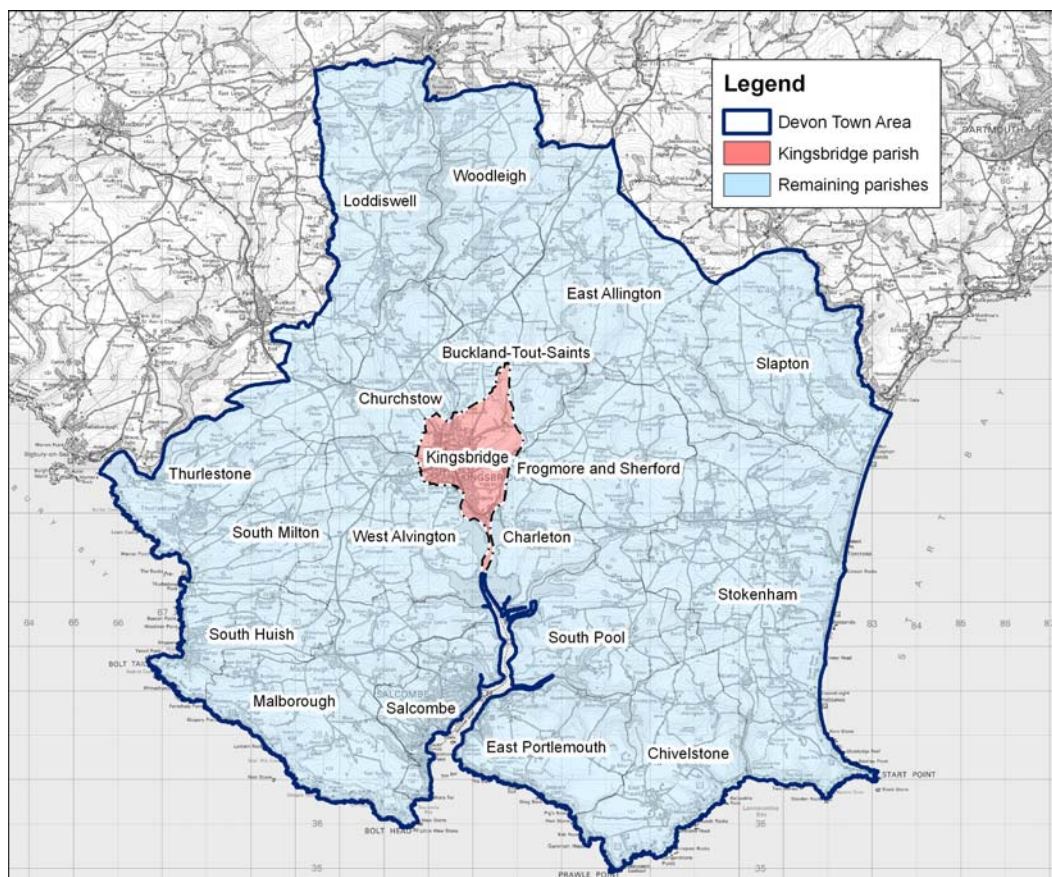
Figures may not add to totals due to rounding.

Please also refer to the Background information which supports the model on which these figures have been calculated.

Area definition

The “Devon Town” areas have been defined as aggregations of parishes. The following parishes make up the Kingsbridge “Devon Town” area:

Buckland-Tout-Saints	Charleton	Chivelstone	Churchstow	East Allington
East Portlemouth	Frogmore & Sherford	Kingsbridge	Loddiswell	Malborough
Salcombe	Slapton	South Huish	South Milton	South Pool
Stokenham	Thurlestone	West Alvington	Woodleigh	



© Crown Copyright. All rights reserved. Devon County Council. 100019783 2007

Each “Devon Town” area comprises a centre (coloured red) and its surrounding hinterland.

Background

The projections have been prepared using the Chelmer population projection model at the district level to project 5 year age groups. These projections are then split into parish projections on the basis of the age/sex ratios from the 2001 population census applied to all of the 5 year age groups. The resultant detailed parish data is then aggregated into the defined Devon Town areas.

The base data used by the Chelmer model is the 2001 mid year estimates by district prepared by the Office for National Statistics in the light of the 2001 census. This data has been adjusted by updating the model to use the 2005 mid year estimates, the latest available at the time of preparation, and the births and deaths data up to 2006.

The figures in this report are based on the migration rate over the last 20 years of data but modified slightly for some districts to take account of capacity restraints in Exeter, for example, and the building of new communities at Cranbrook and Sherford. This projection is very similar to that used for the current Structure Plan for Devon.

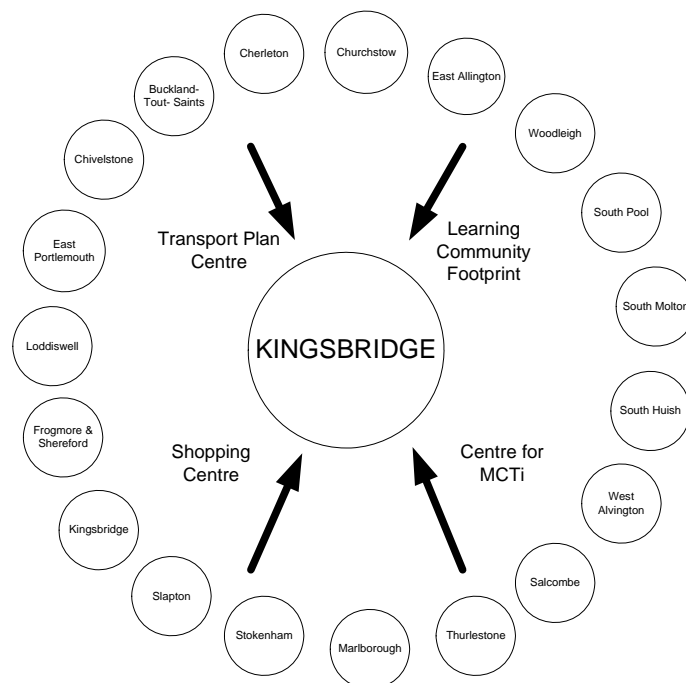
The usual ‘health warning’ applies to these projections. They are projections based on trends which may change and the further away the date the more the uncertainty increases. In addition, the smaller the area the more uncertain the projections particularly for individual or small age groupings.

Identifying Devon Towns

The main factor that decides a town's hinterland is provision of services; the place that the hinterland looks to in order to provide the things it needs to survive. In order to identify the 28 Devon Towns, analysis of the following services and other relevant factors have been taken into account:

- Local Travel Plans – which are based on public consultation and map local travel patterns, the majority of which are short ones in and around local communities as part of people's daily lives.
- Shopping catchment areas – which are the service most frequently accessed by people.
- Learning Community catchment areas – which have a major influence on where people look to for services. Learning Community catchments do not always follow district or even county boundaries, but are based on a collection of feeder primary schools.
- Market and Coastal Towns Initiative areas - The Market and Coastal Towns Initiative was started after recognition that the health of a market town is vital to the well being of its hinterland, and that many of Devon's market towns were in need of regeneration. It is a Central Government initiative, administered by the RDAs. Over half of Devon is included in the Market and Coastal Towns Initiative.
- Parishes - The boundary definitions are shown in terms of parishes, as they are traditionally the smallest area used for 'clustering'.

The diagram below is an illustration of how this works..



Exeter also provides a similar or related "market town" function as well as being a sub regional centre with a larger sphere of influence.