

2. Introduction to the 2009 JSNA

2. Devon Overview

2.1 What is a JSNA?

The Department of Health defines a Joint Strategic Needs Assessment (JSNA) as:

'a systematic method for reviewing the health and wellbeing needs of a population, leading to agreed commissioning priorities that will improve health and wellbeing outcomes and reduce inequalities.'

The JSNA is intended to provide a holistic and top-level view of the current and future needs within Devon. It is a continuous process so that the most up to date information is always available to inform strategic direction and decision-making. This will ensure that the population's needs are at the centre of everything that we do.

The government placed responsibility on all upper-tier local authorities and PCTs to undertake a Joint Strategic Needs Assessment through the introduction of the Local Government and Public Involvement in Health Act (2007).

Through breaking down the title it becomes clear what is required by the department of health:

Joint – The JSNA provides a framework for NHS Devon and Devon County Council to work in partnership alongside the people of Devon, to improve health and well-being in the county.

Strategic – The JSNA will provide up to date and in-depth information on the current and future health and wellbeing needs within Devon. This information will form the basis for the production and refresh of all strategic and planning documents for NHS Devon and Devon County Council, ensuring that NHS Devon and Devon County Council are planning jointly to improve the health and social care within Devon.

Needs Assessment – The needs assessment process undertaken as part of the JSNA will allow for services to be based on people's wants and needs, regardless of what has gone before.

2.2 Why do we need it?

JSNA's are core to the successful provision of health and social care in Devon, and is an essential step of the commissioning cycle. The more that we know about the health, wellbeing and social needs of the population that we serve, the better we are able to commission services to meet those needs. Clearly a joint understanding between partners will enable better joint commissioning. This will allow for the tailoring of services, across commissioners, to the needs of the public, fitting with the Department of Health's vision of World Class Commissioning.

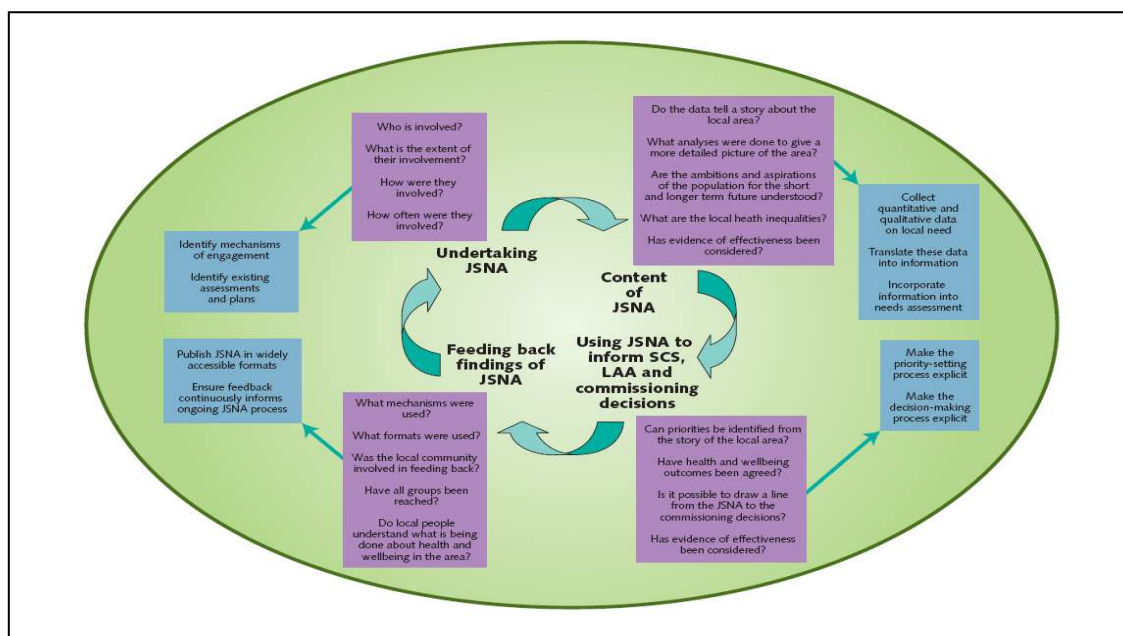
2.3 How do we use it?

The JSNA is produced to provide an assessment of the current and future need of the population. NHS Devon and Devon County Council understand that it is not just the information and knowledge gained that is important, but how the information and knowledge is used to improve the health and social care of Devon.

Therefore, NHS Devon and Devon County Council have embedded the JSNA in their commissioning cycles to ensure that all their strategies and planning documents meet the needs of the local population.

Figure 1 is a process map designed by the Department of Health which NHS Devon has used to ensure that each JSNA is robust and representative of local needs is used to support strategic planning and commissioning decisions, and the findings are fed back to the local community to provide transparency to local decision-making.

Figure 1 – The Joint Strategic Needs Assessment process



The core purpose of the JSNA is to support commissioning and therefore the main audiences for this work remain key commissioning influencers and decision makers:

- Strategic commissioners across health and social care
- Locality clinical commissioners through consortia across Devon
- Partners in commissioning for example Local Strategic Partnerships

However the JSNA also has wider audiences. It is relevant to providers of health and social care and we would expect service delivery to become increasingly aligned to the needs identified. There is interest from a range of wider partners as we develop greater understanding of the communities we serve, for example district, town and parish councils, housing and environmental departments of the county council, and the police. Added to that, there is tremendous potential for sharing this understanding with communities themselves to support their engagement in health and wellbeing.

2.4 The 2009/10 JSNA

2.4.1 Background

In 2008 NHS Devon and Devon County Council produced their first JSNA. It received positive feedback by CSCI in 2008 and in our World Class Commissioning review for the same year.

In refreshing and developing our JSNA for 2009, our commitment has been to build on our early success through an annual cycle of improvement in our JSNA. In particular we have taken steps to ensure the JSNA this year, reflects the feedback we received from stakeholders and the public. In The Way Ahead consultation last year, we also specifically consulted on the quality of the JSNA. Our JSNA consultation and questions reached out to more than 500 stakeholder contacts, plus a wider population through the internet and public engagement events. Overall the feedback was extremely positive, with some helpful suggestions for future improvement including:

- More focus on the rural dimension in our town profiles
- Data and actual numbers as well as percentage comparators for each Devon Town
- Greater emphasis on deprivation and its impact on our communities

2.4.2 2009 JSNA Improvements

The 2009 document is Devon's second JSNA for health care and well-being between NHS Devon and Devon County Council. It has further developed the relationships between strategic intelligence and analyst teams from NHS Devon and Devon County Councils as well as the public. With the systems in place to collect the data and produce the assessment it has allowed for further improvements to be made to the JSNA including those suggested in the feedback.

New additions to the town/city profiles and the locality profiles for the 2009 Devon JSNA include:

- Adult Safeguarding Referrals
- Dementia Prevalence
- Ethnicity Statistics
- Carers Analysis
- Place Survey Analysis
- Alcohol-Related Admissions
- Urban/Rural Deprivation

The Devon Overview has been expanded to include a wider variety of areas including:

- | | |
|--|--|
| <ul style="list-style-type: none"> • Rurality and access to services • Housing • Environment • Crime • Birth and Maternity • Mental Health • Healthy Living and Obesity • Smoking • Sexual Health | <ul style="list-style-type: none"> • Alcohol • Falls • Safeguarding Adults • Children & Young People – safeguarding • Homeless Single People and Families • Gypsies and Travellers • Migrants • Domestic Abuse |
|--|--|

In order to provide a wider range of information, the JSNA steering group has worked alongside some new partners this year including the Police, Devon County Council Environment Department and the Housing Service.

This years JSNA is beginning the process of integrating predictive modelling into the needs assessments. This will provide more information on the effects of certain health, wellbeing and social issues on services which will further enhance the document, enabling more effective and targeted strategies and commissioning.

Due to this, the 2009/10 JSNA provides a more comprehensive understanding of important issues for health and social care in the county.

2.4.3 2009 JSNA Structure

To provide the best assessment of the current and future needs of the population of Devon, the 2009 JSNA segments the population in a range of ways including:

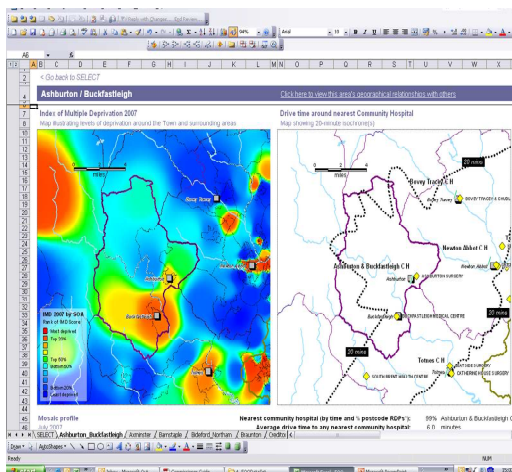
- A county wide view of the population profile spanning demography, social and environmental factors, health and wellbeing and the specific needs of vulnerable groups
- Profiles across the three geographical localities in Devon, covering need and use of health and social care services, and aligning the JSNA to Devon's recently established locality commissioning arrangements
- Town profiles for the 28 Towns plus Exeter City, again spanning need and use of health and social care services. These town profiles have been strengthened with a greater span of understanding of referrals and activity in key services
- A review of the in depth needs assessments we have conducted across a range of care areas, many of which were prepared for 'The Way Ahead', with further assessments added this year, for example the Carer Needs Assessment and Stroke Equity Audits.
- A view to the future, to anticipate population changes or events we need to prepare for and their potential impact through a range of predictive modelling and horizon scanning

2.5 Future Development

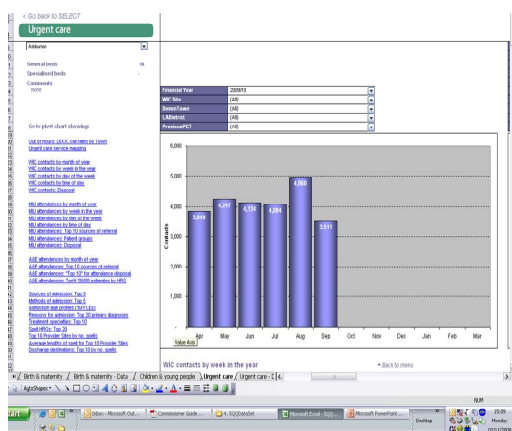
As part of the Transforming Community Services Programme, an interactive planning tool has been commissioned. The tool aims to gain a better understanding of the use of community services, and encourage engagement for locality clinical commissioners and other stakeholders, building on the JSNA. This planning tool uses the 28 Devon market and coastal towns and the city of Exeter that are used in the JSNA.

The screenshots below illustrate a small amount of its current capability.

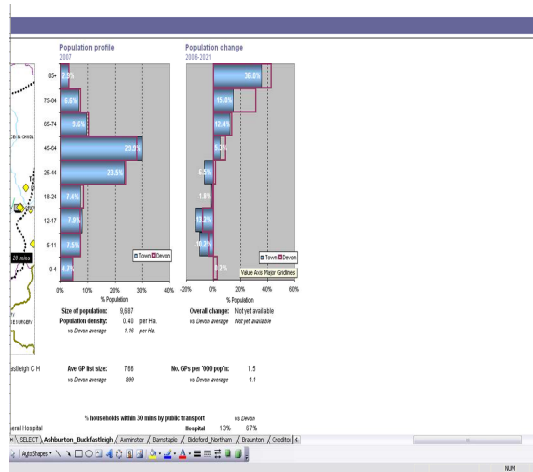
Town based deprivation and drive time maps



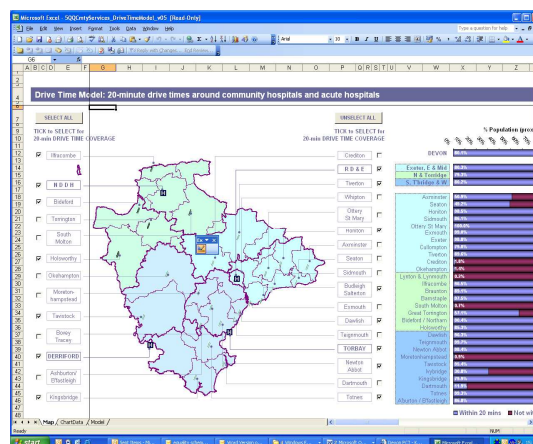
Care area activity



Population change profiles



Drive time modelling



In 2010 we are aiming to adapt the tool further to enable all the JSNA information to be interactively accessed online. It will also provide the ability to enter all new JSNA information online as soon as we receive it, ensuring the most up to date information is available.

2.6 How to use this JSNA?

The 2009 JSNA provides a large range of information covering a number of population segments. Therefore the most effective way to use this JSNA is to:

- Be specific and clear about the information that you are trying to find i.e. population number
- Decide on the population segment that you want to focus on i.e. the population number of Holsworthy town. The section can be found through going to the contents list. It would also be useful to look through the list of in depth needs assessments to see if a study has already been undertaken.
- Read through the relevant section/s or relevant needs assessment to find out further information.
- If more information is required on that subject then further personal research can be undertaken, or the JSNA steering group can be contacted to point you in the direction or provide more information.