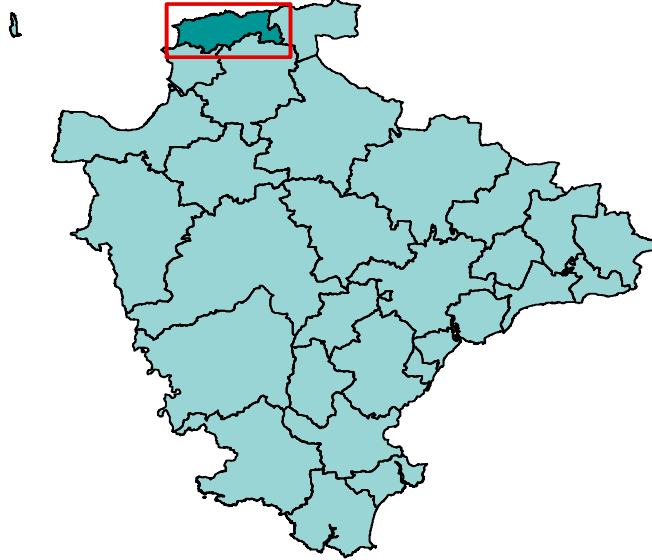


Area definition

This profile, one of 29 covering the area of Devon County Council, has been generated by Strategic Intelligence with the aim of contributing to. It provides a statistical overview, based on a series of facts and figures, of what life is like in the area.

The profile is structured around a series of themes to cover social, economic and environmental well being. It is part of a suite of documents that provide information about the area and the people living there. Further information is available on the Devon County Council website (<http://www.devon.gov.uk/devontownprofiles>).

Each area is built up from parishes with one or more population centres and the remaining rural hinterland. Further information about the creation of the Devon Town geography can be found at the end end of this report.



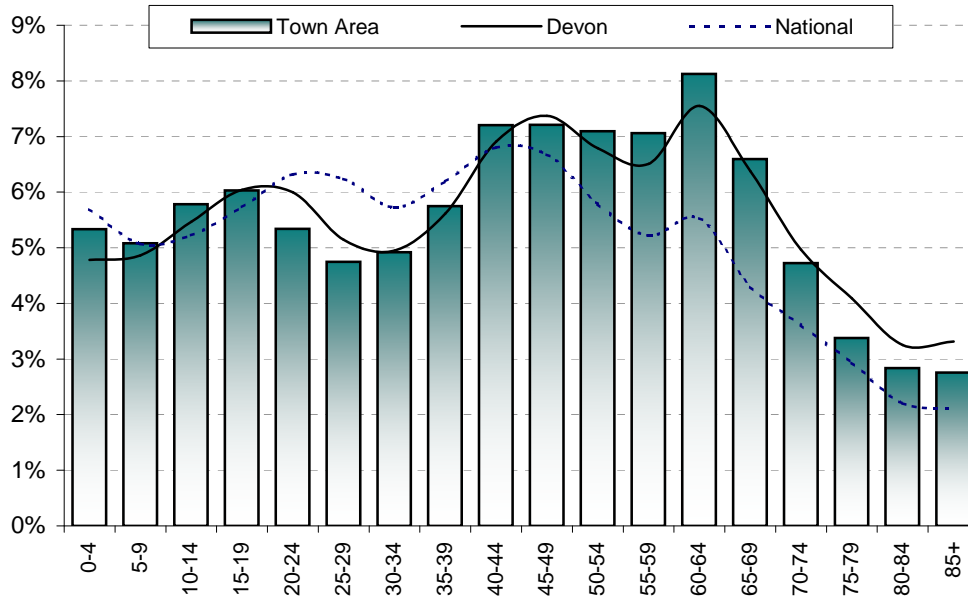
© Crown copyright. All rights reserved. 100019783 2011

The area has one major settlement - Ilfracombe. It also includes the following parishes: Berrynarbor, Bittadon, Combe Martin, Kentisbury, Mortehoe and West Down.

Population

Total population	Ilfacombe	Remainder	Town Area	North Devon	Devon	National
2001	10,838	5,834	16,672	87,508	704,497	57,103,927
2011 (National 2010)	12,425	6,597	19,022	97,415	772,374	60,462,600
Change	1,587	763	2,350	9,907	67,877	3,358,673
% change	14.6%	13.1%	14.1%	11.3%	9.6%	5.9%

Proportion aged	Ilfacombe	Remainder	Town Area	North Devon	Devon	National
0-19	23.1%	20.6%	22.2%	22.0%	21.2%	21.7%
20-39	21.9%	18.6%	20.8%	21.1%	21.7%	24.5%
40-59	28.6%	28.6%	28.6%	27.8%	27.6%	24.5%
60-79	20.7%	26.7%	22.8%	23.0%	23.0%	16.4%
80 and over	5.7%	5.4%	5.6%	6.1%	6.6%	4.3%

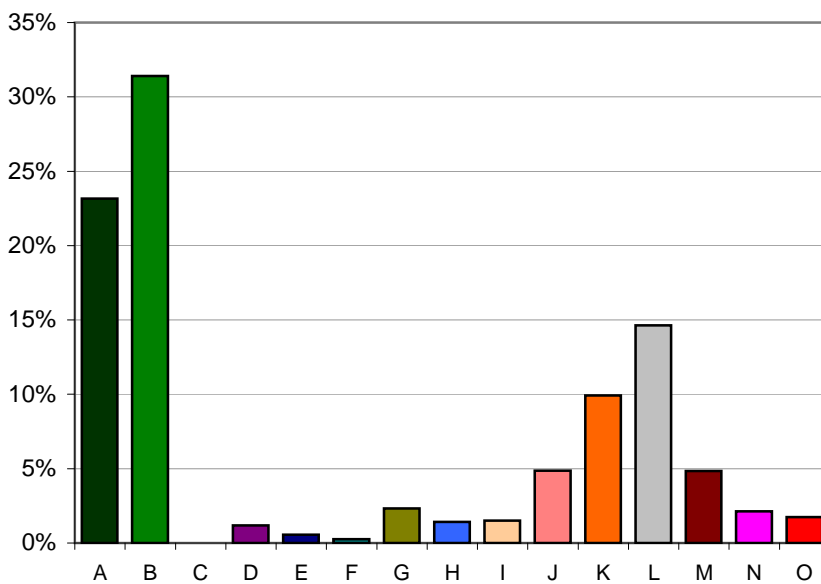


Population attributes

Information about the people that live in the area is taken from Experian's Mosaic data. Mosaic is based on the assumption that people living in an area are likely to be similar; however, it does not provide definitive description of each person.

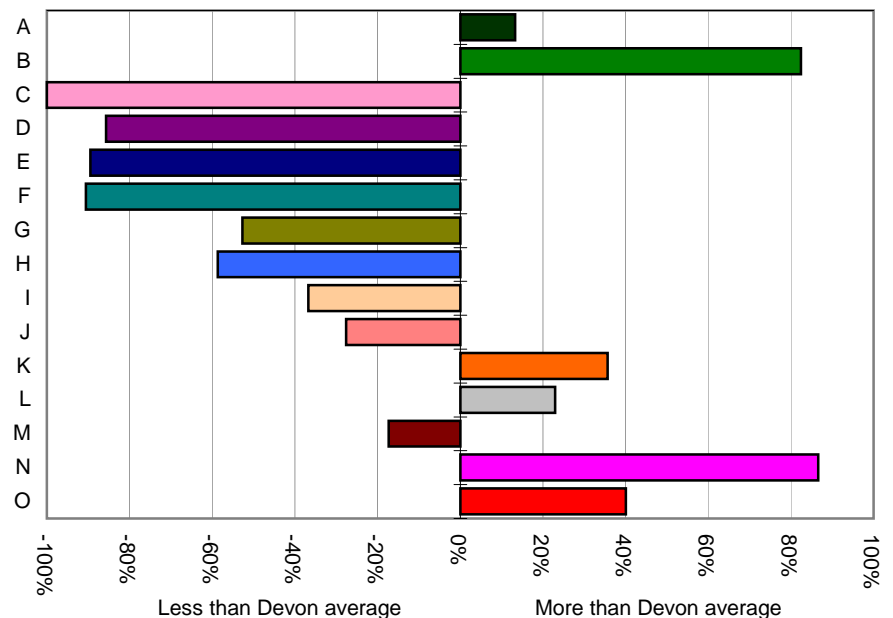
The Mosaic data are broken down in to a number of groups, each one describing a section of the population.

	Households	%	Devon
A -Residents of isolated rural communities	1,917	23.2%	20.5%
B -Residents of small and mid-sized towns with strong local roots	2,599	31.4%	17.2%
C -Wealthy people living in the most sought after neighbourhoods	0	0.0%	0.9%
D -Successful professionals living in suburban or semi-rural homes	98	1.2%	8.3%
E -Middle income families living in moderate suburban semis	47	0.6%	5.4%
F -Couples with young children in comfortable modern housing	22	0.3%	2.8%
G -Young, well-educated city dwellers	192	2.3%	4.9%
H -Couples and young singles in small modern starter homes	118	1.4%	3.5%
I - Lower income workers in urban terraces in often diverse areas	125	1.5%	2.4%
J -Owner occupiers in older-style housing in ex-industrial areas	403	4.9%	6.7%
K -Residents with sufficient incomes in right-to-buy social houses	821	9.9%	7.3%
L -Active elderly people living in pleasant retirement locations	1,211	14.6%	11.9%
M -Elderly people reliant on state support	401	4.8%	5.9%
N -Young people renting flats in high density social housing	176	2.1%	1.1%
O -Families in low-rise social housing with high levels of benefit	145	1.8%	1.3%



Distribution of households by Mosaic group

Proportion of households compared to Devon average



Deprivation - 2010

The principal source of deprivation data is currently The Indices of Deprivation 2010. This is a Lower Super Output Area (LSOA) level measure of deprivation. There are over 32,000 LSOAs in England, each one containing about 1,500 people. They were developed following the 2001 Census. The index comprises seven domains: income, employment, health & disability, education & training, barriers to housing & services, the living environment and crime. These are combined to give an overall indication of deprivation.

Population living in deprived areas

Population within most deprived 25% of all areas in England	4,874
% population within most deprived 25% of all areas in England	26%
Population within least deprived 25% of all areas in England	0
% population within least deprived 25% of all areas in England	0%

Deprivation data are not available for wards but the following tables show which wards contain the most deprived LSOA in the Town Area

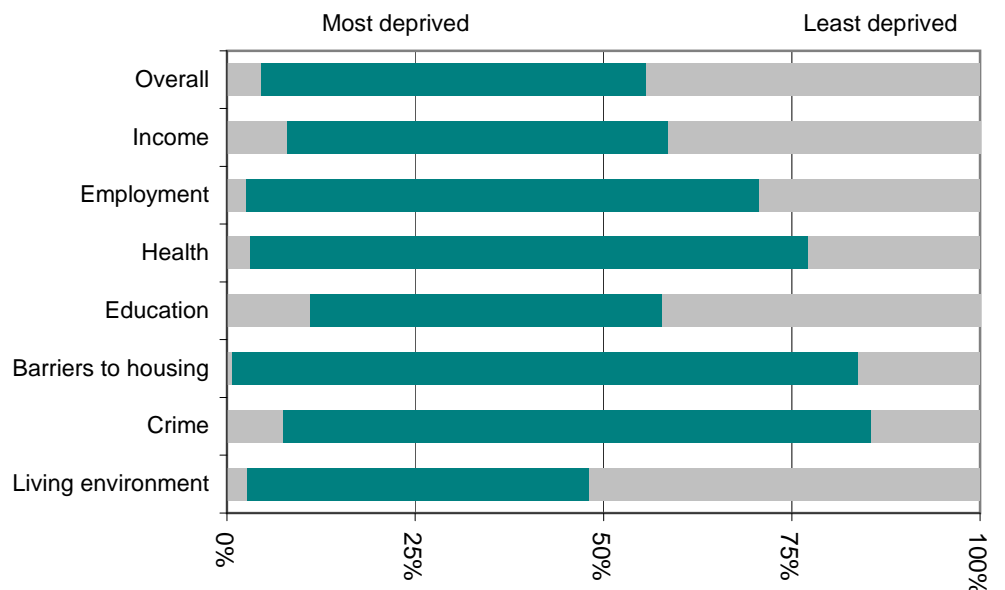
Most deprived areas

Overall	Ilfracombe Central
Income Deprivation	Ilfracombe Central
Employment Deprivation	Ilfracombe Central
Health Deprivation and Disability	Ilfracombe Central
Education, Skills and Training Deprivation	Ilfracombe Central
Barriers to Housing and Services	Combe Martin
Living Environment Deprivation	Ilfracombe Central
Crime	Ilfracombe Central

Least deprived areas

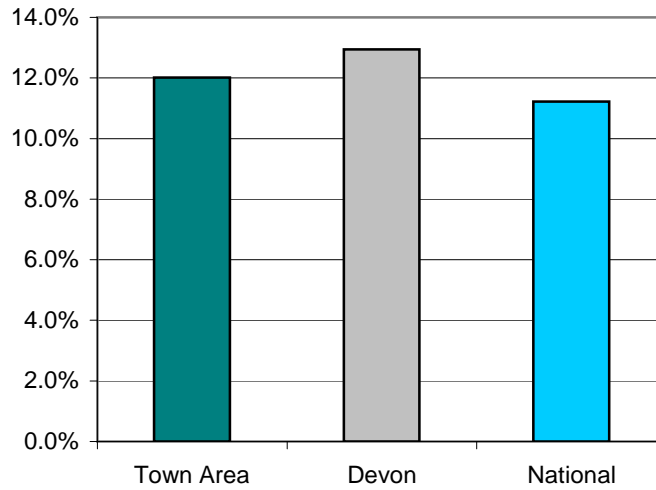
Overall	Georgeham and Morteheo
Income Deprivation	Georgeham and Morteheo
Employment Deprivation	Georgeham and Morteheo
Health Deprivation and Disability	Georgeham and Morteheo
Education, Skills and Training Deprivation	Georgeham and Morteheo
Barriers to Housing and Services	Ilfracombe Central
Living Environment Deprivation	Ilfracombe West
Crime	Combe Martin

This graph shows the range of deprivation in the Ilfracombe Town Area. The larger the green bar the more variation there is within the area.



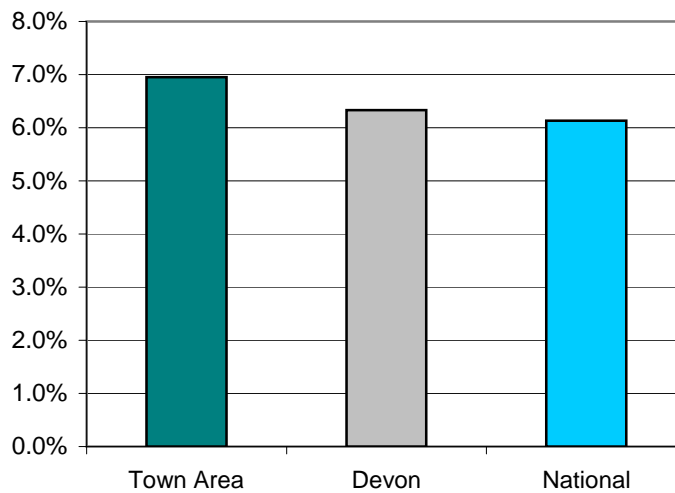
Children Living In Poverty - 2011

	<i>Ilfracombe</i>	<i>Remainder</i>	<i>Town Area</i>	<i>North Devon</i>	<i>Devon</i>	<i>National</i>
Percentage of children living in poverty	12.7%	10.9%	12.0%	12.4%	12.9%	11.2%



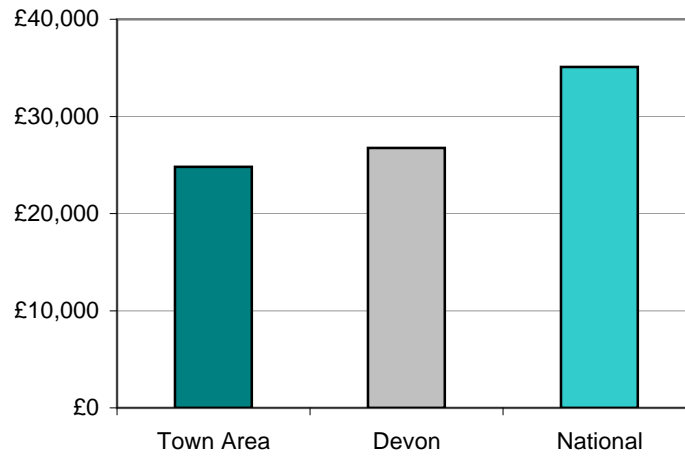
Percentage of Fuel Poverty Households - 2008

	<i>Ilfracombe</i>	<i>Remainder</i>	<i>Town Area</i>	<i>North Devon</i>	<i>Devon</i>	<i>National</i>
Percentage of fuel poverty households	7.0%	6.8%	7.0%	6.6%	6.3%	6.1%



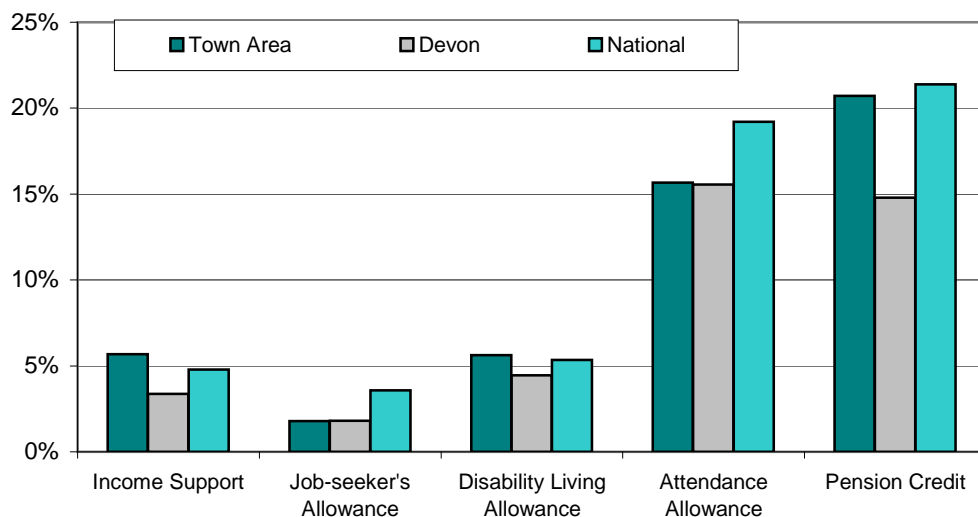
Income - 2008

	<i>Ifracombe</i>	<i>Remainder</i>	<i>Town Area</i>	<i>North Devon</i>	<i>Devon</i>	<i>National</i>
Average income (£)	23,800	26,400	24,800	26,000	26,800	35,100



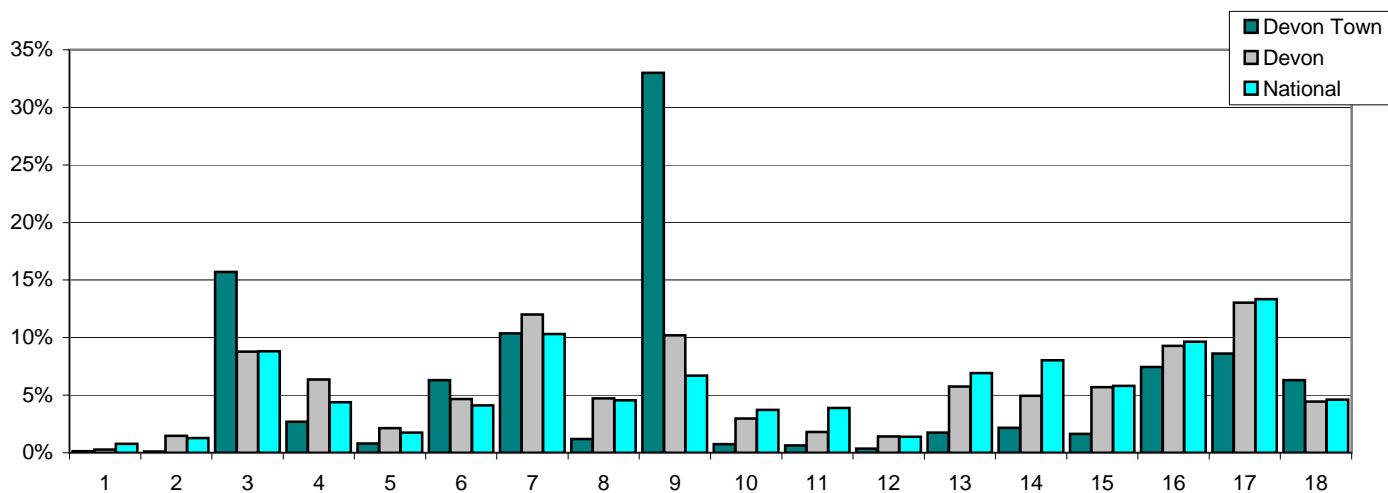
Benefits - 2011

Percent of:	<i>Ifracombe</i>	<i>Remainder</i>	<i>Town Area</i>	<i>North Devon</i>	<i>Devon</i>	<i>National</i>
16-59 year olds claiming Income Support	6.4%	3.2%	5.7%	3.9%	3.4%	4.8%
16-64 year olds claiming Job Seekers Allowance	2.2%	0.4%	1.8%	1.6%	1.8%	3.6%
Total population claiming Disability Living Allowance	6.4%	3.4%	5.6%	4.7%	4.5%	5.3%
65 and older claiming Attendance Allowance	18.5%	11.3%	15.7%	15.4%	15.6%	19.2%
60 and older claiming Pension Credit	25.6%	10.6%	20.7%	16.9%	14.8%	21.4%



Employment - 2010

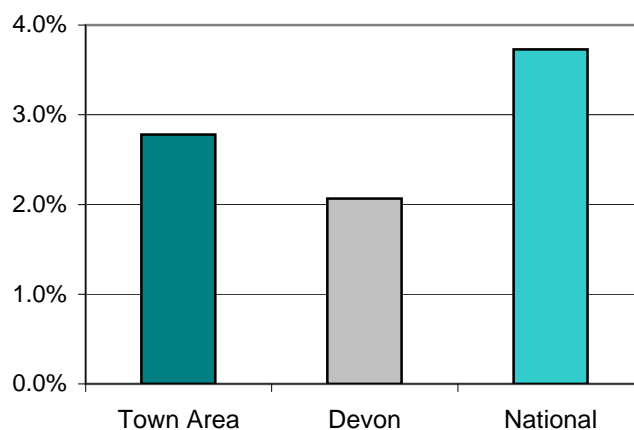
Percent of all employees	Ifracombe	Remainder	Town Area	North Devon	Devon	National
1 Agriculture, forestry & fishing	0.0%	0.3%	0.1%	0.1%	0.3%	0.8%
2 Mining, quarrying & utilities	0.1%	0.1%	0.1%	0.8%	1.5%	1.3%
3 Manufacturing	23.1%	5.5%	15.7%	13.5%	8.8%	8.8%
4 Construction	1.9%	3.3%	2.7%	3.9%	6.4%	4.4%
5 Motor trades	0.4%	1.4%	0.8%	2.0%	2.1%	1.8%
6 Wholesale	6.1%	7.0%	6.3%	4.7%	4.7%	4.1%
7 Retail	12.3%	8.2%	10.4%	13.6%	12.0%	10.3%
8 Transport & storage (inc postal)	1.6%	0.7%	1.2%	3.5%	4.7%	4.6%
9 Accommodation & food services	17.1%	55.9%	33.0%	15.0%	10.2%	6.7%
10 Information & comms	0.7%	0.6%	0.7%	1.2%	3.0%	3.7%
11 Financial & insurance	1.0%	0.2%	0.6%	1.1%	1.8%	3.9%
12 Property	0.5%	0.2%	0.4%	0.7%	1.4%	1.4%
13 Professional, scientific & technical	2.6%	0.6%	1.7%	3.7%	5.7%	6.9%
14 Business administration & support services	2.1%	2.3%	2.2%	3.7%	4.9%	8.0%
15 Public administration & defence	2.0%	1.2%	1.6%	4.0%	5.7%	5.8%
16 Education	9.5%	4.8%	7.4%	9.5%	9.3%	9.6%
17 Health	13.2%	1.0%	8.6%	15.3%	13.0%	13.3%
18 Arts, entertainment, recreation & other services	6.0%	6.8%	6.3%	3.6%	4.4%	4.6%



Note: This table does not include self-employed businesses which can result in low figures especially in the Agriculture, Forestry & Fishing classification.

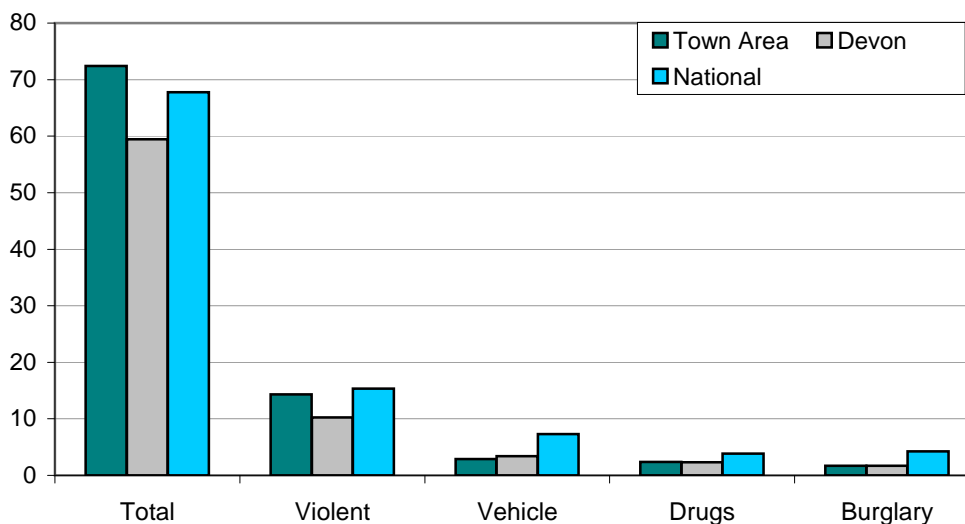
Unemployment - 2011

	<i>Ilfracombe</i>	<i>Remainder</i>	<i>Town Area</i>	<i>North Devon</i>	<i>Devon</i>	<i>National</i>
Number unemployed	240	51	291	1,155	9,451	1,461,644
% of working age population	3.5%	1.4%	2.9%	2.2%	2.2%	4.0%



Crime - April 2010 - March 2011

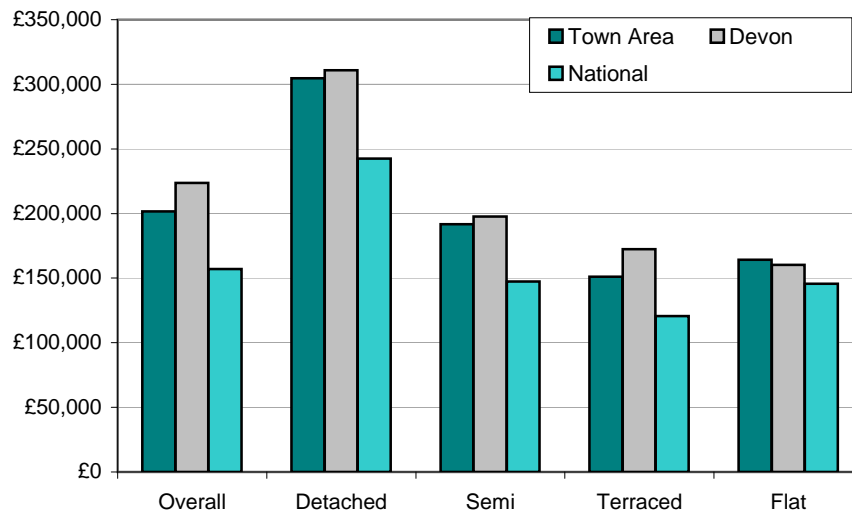
Crimes per 1,000 population	<i>Ilfracombe</i>	<i>Remainder</i>	<i>Town Area</i>	<i>North Devon</i>	<i>Devon</i>	<i>National</i>
Total crime	87.1	44.7	72.4	68.8	59.5	67.8
Violent crime	17.5	8.3	14.3	13.3	10.3	15.4
Vehicle crime	3.0	2.7	2.9	3.2	3.4	7.3
Drug offences	3.3	0.6	2.4	3.2	2.3	3.8
House burglary	1.9	1.2	1.7	1.6	1.7	4.2



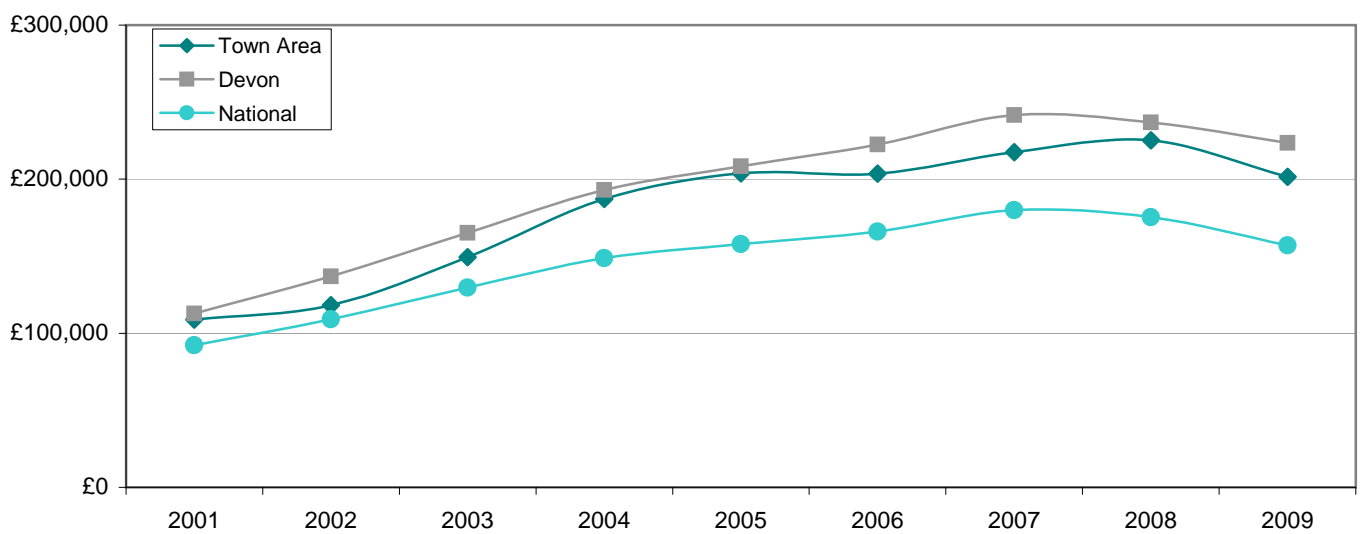
Note: Vehicle Crime Includes: Interfering with a motor vehicle

House prices - 2009

Average prices (£)	<i>Ifracombe</i>	<i>Remainder</i>	<i>Town Area</i>	<i>North Devon</i>	<i>Devon</i>	<i>National</i>
Overall	165,157	259,199	201,560	209,460	223,645	157,033
Detached	254,158	353,935	304,791	285,301	310,899	242,492
Semi-detached	193,400	189,858	191,629	187,493	197,577	147,464
Terraced	145,275	169,219	151,022	158,442	172,313	120,663
Flat/Maisonette	117,764	239,845	164,348	164,651	160,202	145,635



Overall average price (£)	<i>2001</i>	<i>2002</i>	<i>2003</i>	<i>2004</i>	<i>2005</i>	<i>2006</i>	<i>2007</i>	<i>2008</i>	<i>2009</i>
Ifracombe	108,878	118,130	149,322	187,179	203,889	203,618	217,571	225,231	201,560
Devon	112,813	136,969	165,264	193,056	208,323	222,478	241,523	236,770	223,645
England & Wales	92,183	108,982	129,632	148,744	157,880	166,063	179,905	175,434	157,033



Place Survey - 2008

The 2008 Place Survey provides information on people's perceptions of their local area and the local services they receive. The survey collects information on 18 national indicators for local government, used to measure local government performance for 152 county councils, metropolitan district councils, London boroughs and unitary authorities.

Further information can be found on the Department for Communities and Local Government's website: www.communities.gov.uk

Figures are the proportion of people responding to the survey who live in the Ilfracombe Town Area.

What things are most important in making somewhere a good place to live?

44%	The level of crime
42%	Clean streets
42%	Health services
29%	Job prospects
29%	Public transport

What things most need improving in this area?

44%	Activities for teenagers
39%	Job prospects
39%	Wage levels and cost of living
36%	Road and pavement repairs
33%	Clean streets

People saying they are very satisfied or fairly satisfied with

	Town Area	Devon
Their local area as a place to live	85%	89%
Their local council	35%	52%
Their county council	29%	45%

Education - June 2011

Ifracombe *Remainder* *Town Area* *North Devon* *Devon* *National*

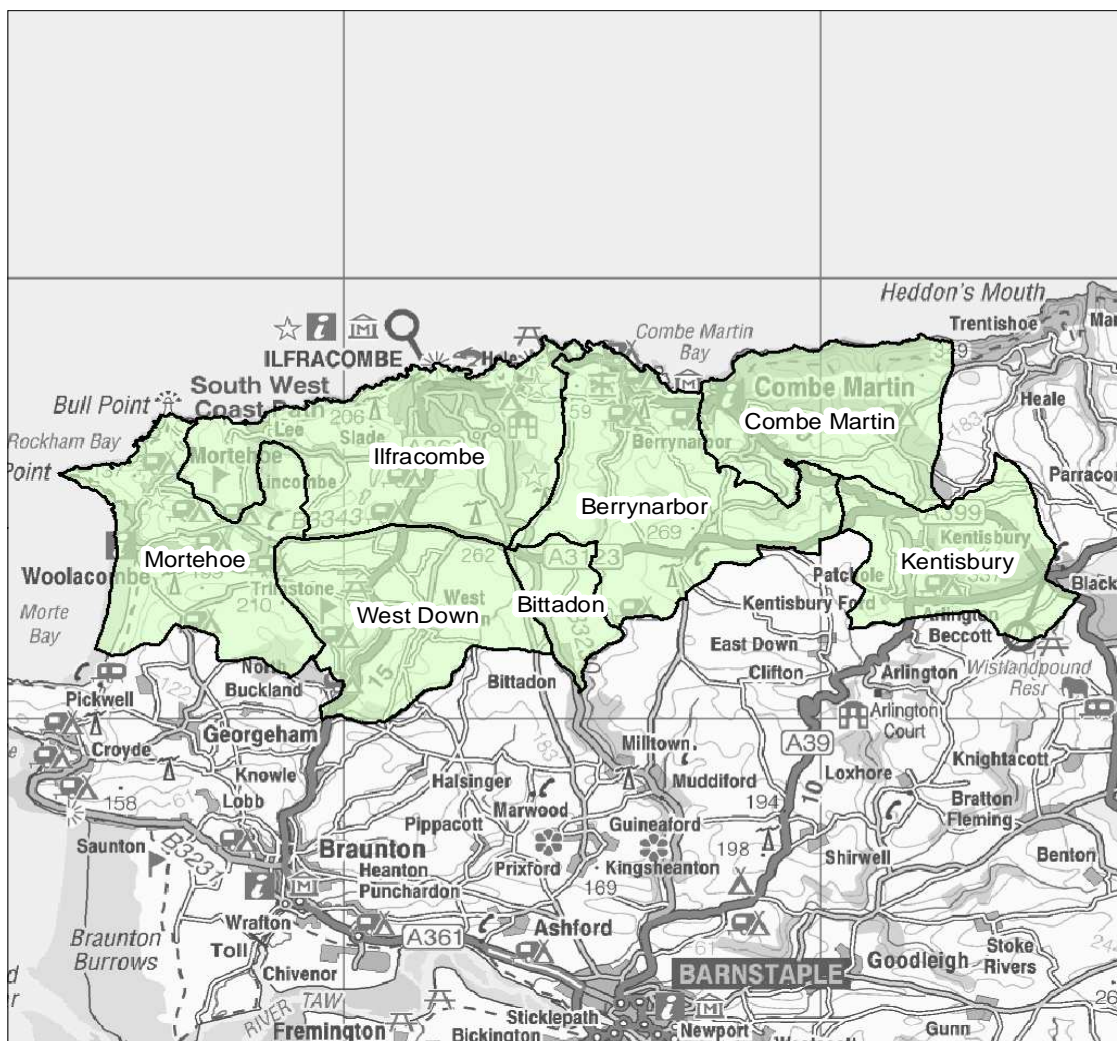
% children achieving Key Stage 2 level 4 or above in

English	85%	86%	85%	85%	85%	81%
Maths	75%	75%	75%	83%	84%	82%
Science	85%	86%	100%	87%	87%	85%

% children achieving 5 or more GCSEs at grades

A*-C	62%	64%	72%	67%	74%	80%
A*-C including	38%	49%	48%	52%	58%	59%
A*-G	81%	82%	93%	95%	96%	n/a

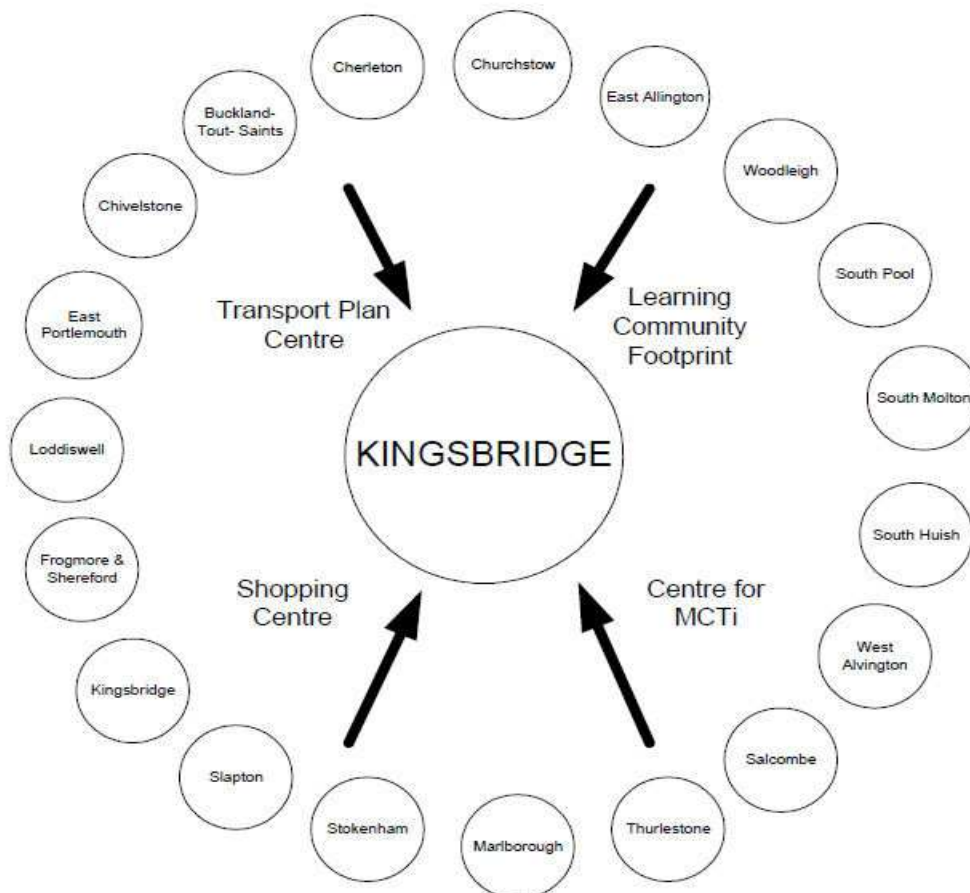
Ifracombe area



Identifying Devon Towns

The main factor that decides a town's hinterland is provision of services; the place that the hinterland looks to in order to provide the things it needs to survive. In order to identify the 28 Devon Towns, analysis of the following services and other relevant factors have been taken into account:

- Local Travel Plans – which are based on public consultation and map local travel patterns, the majority of which are short ones in and around local communities as part of people's daily lives.
- Shopping catchment areas – which are the service most frequently accessed by people.
- Learning Community catchment areas – which have a major influence on where people look to for services. Learning Community catchments do not always follow district or even county boundaries, but are based on a collection of feeder primary schools.
- Market and Coastal Towns Initiative areas - The Market and Coastal Towns Initiative was started after recognition that the health of a market town is vital to the well being of its hinterland, and that many of Devon's market towns were in need of regeneration. It was a Central Government initiative, administered by the RDAs. Over half of Devon was included in the Market and Coastal Towns Initiative.
- Parishes - The boundary definitions are shown in terms of parishes, as they are traditionally the smallest area used for 'clustering'. The diagram below is an illustration of how this works for one Devon Town: Kingsbridge.



Exeter also provides a similar or related "market town" function as well as being a sub regional centre with a larger sphere of influence.

Further information and sources

Population : 2001 - Census © Crown copyright
2011 - Patient and Practitioner Services Agency, national figures from mid-2010 estimate

Population attributes : Mosaic Public Sector 2010 © Experian

Deprivation : Indices of Deprivation 2010
Department for Communities and Local Government
© Crown copyright
<http://www.communities.gov.uk/indices>

Children Living in Poverty : Child Poverty Unit 2011
<http://endchildpoverty.org.uk/>

Fuel Poverty Households : Fuel Poverty Indicator 2008
<http://www.fuelpovertyindicator.org.uk/>

Income : Estimates based on Experian's Mosaic Household dataset 2008
© Experian

Benefits : May 2011 - Department for Work and Pensions
© Crown copyright
<http://research.dwp.gov.uk/asd/tabtool.asp>

Employment : Business Register and Employment Survey/Annual Business Inquiry 2010
Office for National Statistics © Crown copyright
<http://www.nomisweb.co.uk>

Unemployment : April 2011 - Office for National Statistics
© Crown copyright
<http://www.nomisweb.co.uk>

Crime : April 2010 - March 2011
Devon and Cornwall Constabulary

Education : June 2011 - Children and Young People's Directorate
Devon County Council
Local figures relate to children living in an area and attending a Devon County Council

House prices : Land Registry 2009
© Crown copyright
National figures relates to England and Wales. Overall national house price is weighted by number of sales in each month. National house prices by type are simple averages of monthly averages - this figure may be skewed if there were a large number of sales in a

Place Survey : Department for Communities and Local Government 2008
© Crown copyright
<http://www.communities.gov.uk/publications/localgovernment/newplacesurvey>