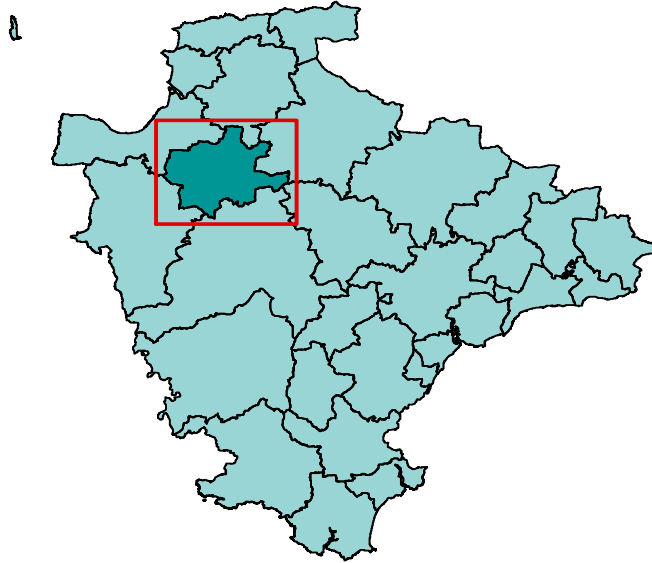


Area definition

This profile, one of 29 covering the area of Devon County Council, has been generated by Strategic Intelligence with the aim of contributing to. It provides a statistical overview, based on a series of facts and figures, of what life is like in the area.

The profile is structured around a series of themes to cover social, economic and environmental well being. It is part of a suite of documents that provide information about the area and the people living there. Further information is available on the Devon County Council website (<http://www.devon.gov.uk/devontownprofiles>).

Each area is built up from parishes with one or more population centres and the remaining rural hinterland. Further information about the creation of the Devon Town geography can be found at the end end of this report.



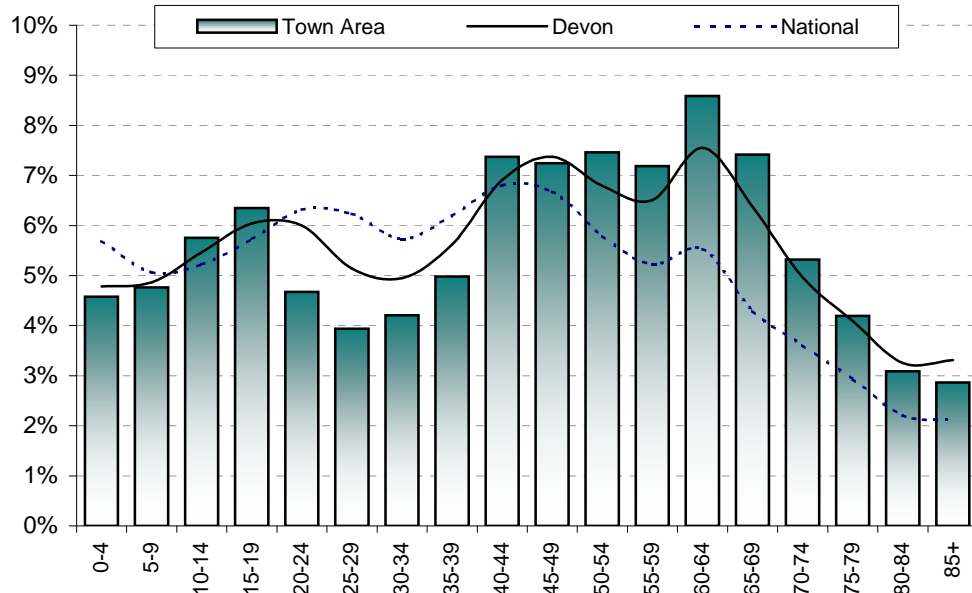
© Crown copyright. All rights reserved. 100019783 2011

The area has one major settlement - Great Torrington. It also includes the following parishes: Ashreigney, Beaford, Buckland Filleigh, Dolton, Dowland, Frithelstock, High Bickington, Huish, Langtree, Little Torrington, Merton, Peters Marland, Petrockstow, Roborough, St. Giles in the Wood and Yarnscombe.

Population

Total population	Great Torrington	Remainder	Town Area	Torrige	Devon	National
2001	5,278	6,166	11,444	58,965	704,497	57,103,927
2011 (National 2010)	5,815	6,679	12,494	65,940	772,374	60,462,600
Change	537	513	1,050	6,975	67,877	3,358,673
% change	10.2%	8.3%	9.2%	11.8%	9.6%	5.9%

Proportion aged	Great Torrington	Remainder	Town Area	Torrige	Devon	National
0-19	24.5%	18.8%	21.4%	21.0%	21.2%	21.7%
20-39	20.7%	15.3%	17.8%	19.3%	21.7%	24.5%
40-59	27.4%	30.8%	29.3%	28.1%	27.6%	24.5%
60-79	21.1%	29.4%	25.5%	25.5%	23.0%	16.4%
80 and over	6.2%	5.7%	6.0%	6.1%	6.6%	4.3%

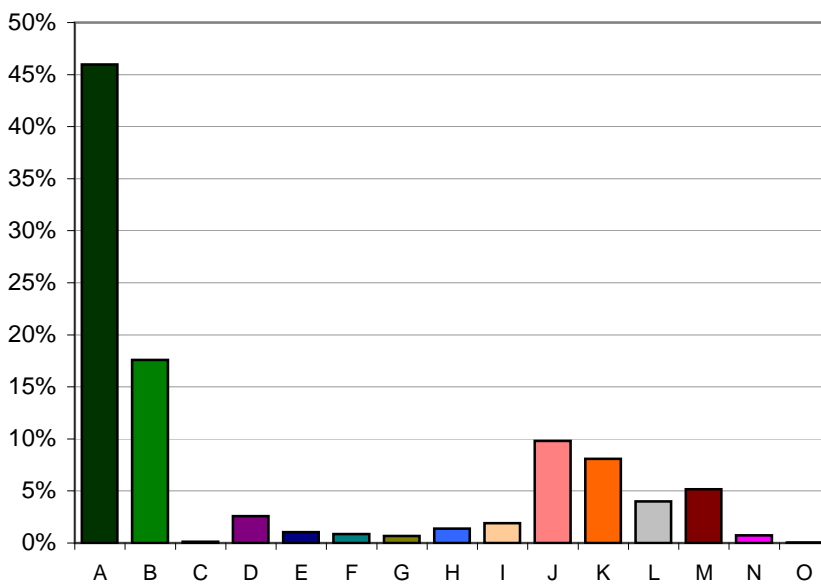


Population attributes

Information about the people that live in the area is taken from Experian's Mosaic data. Mosaic is based on the assumption that people living in an area are likely to be similar; however, it does not provide definitive description of each person.

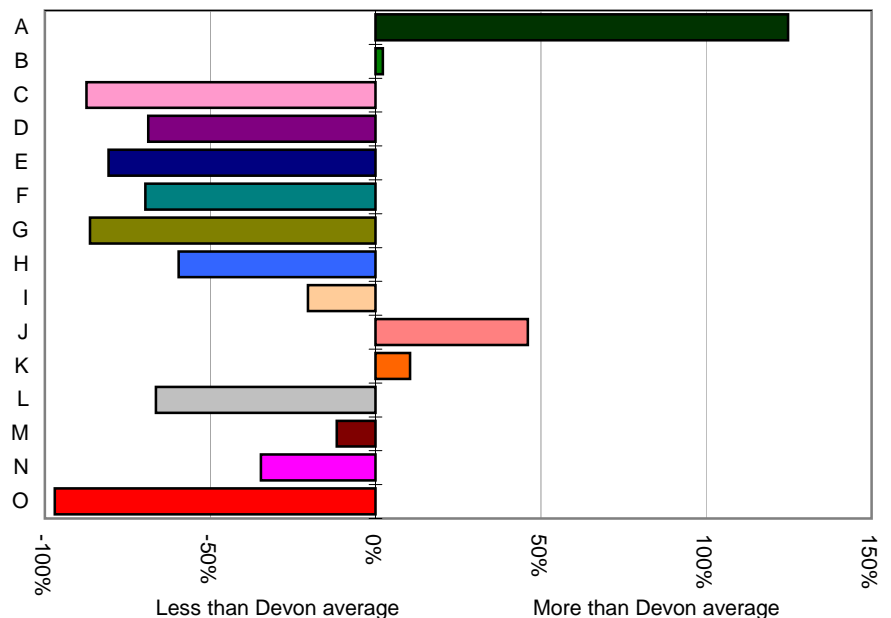
The Mosaic data are broken down in to a number of groups, each one describing a section of the population.

	Households	%	Devon
A -Residents of isolated rural communities	2,471	46.0%	20.5%
B -Residents of small and mid-sized towns with strong local roots	946	17.6%	17.2%
C -Wealthy people living in the most sought after neighbourhoods	6	0.1%	0.9%
D -Successful professionals living in suburban or semi-rural homes	139	2.6%	8.3%
E -Middle income families living in moderate suburban semis	56	1.0%	5.4%
F -Couples with young children in comfortable modern housing	46	0.9%	2.8%
G -Young, well-educated city dwellers	36	0.7%	4.9%
H -Couples and young singles in small modern starter homes	75	1.4%	3.5%
I - Lower income workers in urban terraces in often diverse areas	102	1.9%	2.4%
J -Owner occupiers in older-style housing in ex-industrial areas	528	9.8%	6.7%
K -Residents with sufficient incomes in right-to-buy social houses	434	8.1%	7.3%
L -Active elderly people living in pleasant retirement locations	215	4.0%	11.9%
M -Elderly people reliant on state support	278	5.2%	5.9%
N -Young people renting flats in high density social housing	40	0.7%	1.1%
O -Families in low-rise social housing with high levels of benefit	2	0.0%	1.3%



Distribution of households by Mosaic group

Proportion of households compared to Devon average



Deprivation - 2010

The principal source of deprivation data is currently The Indices of Deprivation 2010. This is a Lower Super Output Area (LSOA) level measure of deprivation. There are over 32,000 LSOAs in England, each one containing about 1,500 people. They were developed following the 2001 Census. The index comprises seven domains: income, employment, health & disability, education & training, barriers to housing & services, the living environment and crime. These are combined to give an overall indication of deprivation.

Population living in deprived areas

Population within most deprived 25% of all areas in England	0
% population within most deprived 25% of all areas in England	0%
Population within least deprived 25% of all areas in England	0
% population within least deprived 25% of all areas in England	0%

Deprivation data are not available for wards but the following tables show which wards contain the most deprived LSOA in the Town Area

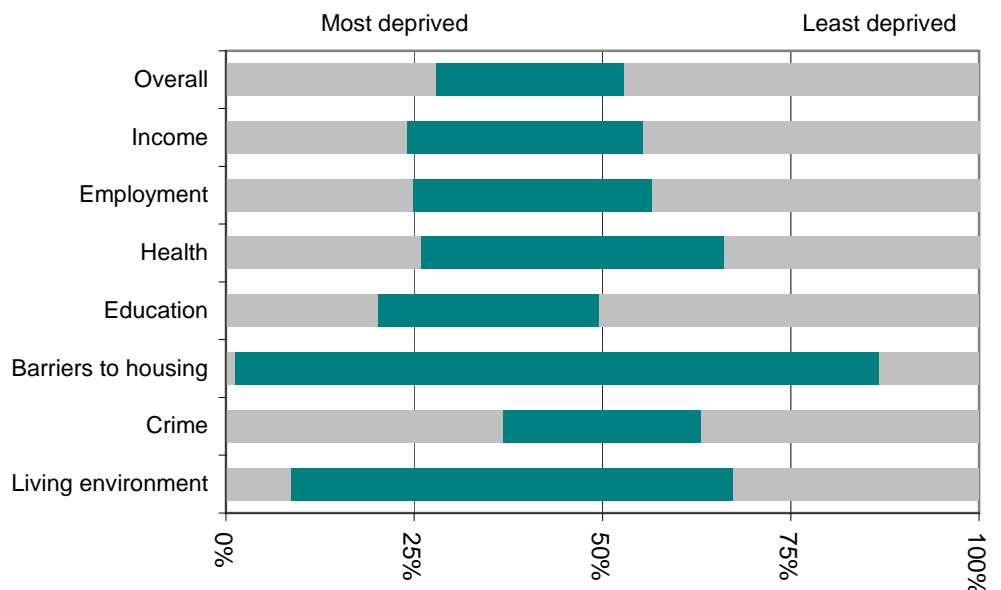
Most deprived areas

Overall	Torrington
Income Deprivation	Torrington
Employment Deprivation	Torrington
Health Deprivation and Disability	Torrington
Education, Skills and Training Deprivation	Torrington
Barriers to Housing and Services	Two Rivers
Living Environment Deprivation	Clinton
Crime	Torrington

Least deprived areas

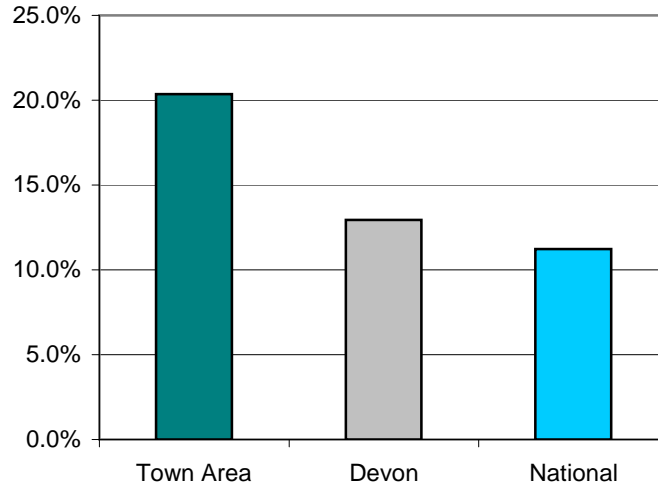
Overall	Torrington
Income Deprivation	Two Rivers
Employment Deprivation	Two Rivers
Health Deprivation and Disability	Two Rivers
Education, Skills and Training Deprivation	Three Moors
Barriers to Housing and Services	Torrington
Living Environment Deprivation	Torrington
Crime	Two Rivers

This graph shows the range of deprivation in the Great Torrington Town Area. The larger the green bar the more variation there is within the area.



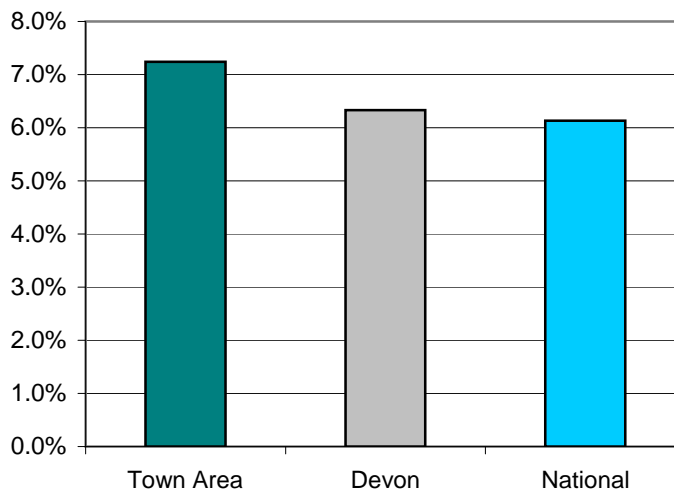
Children Living In Poverty - 2011

	<i>Great Torrington</i>	<i>Remainder</i>	<i>Town Area</i>	<i>Torrige</i>	<i>Devon</i>	<i>National</i>
Percentage of children living in poverty	11.8%	33.0%	20.4%	13.8%	12.9%	11.2%



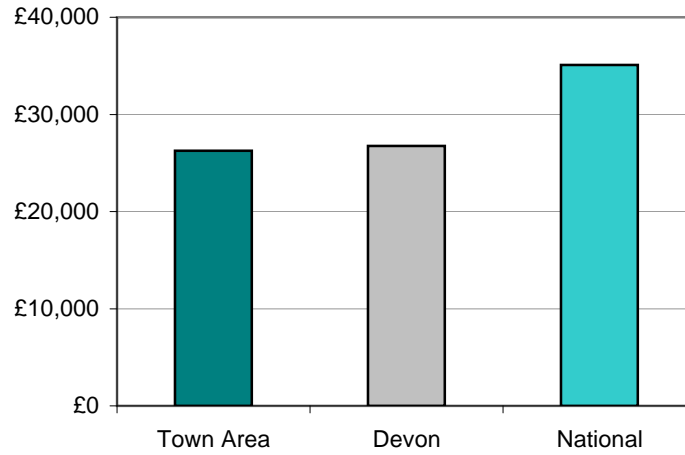
Percentage of Fuel Poverty Households - 2008

	<i>Great Torrington</i>	<i>Remainder</i>	<i>Town Area</i>	<i>Torrige</i>	<i>Devon</i>	<i>National</i>
Percentage of fuel poverty households	6.9%	7.4%	7.2%	7.0%	6.3%	6.1%



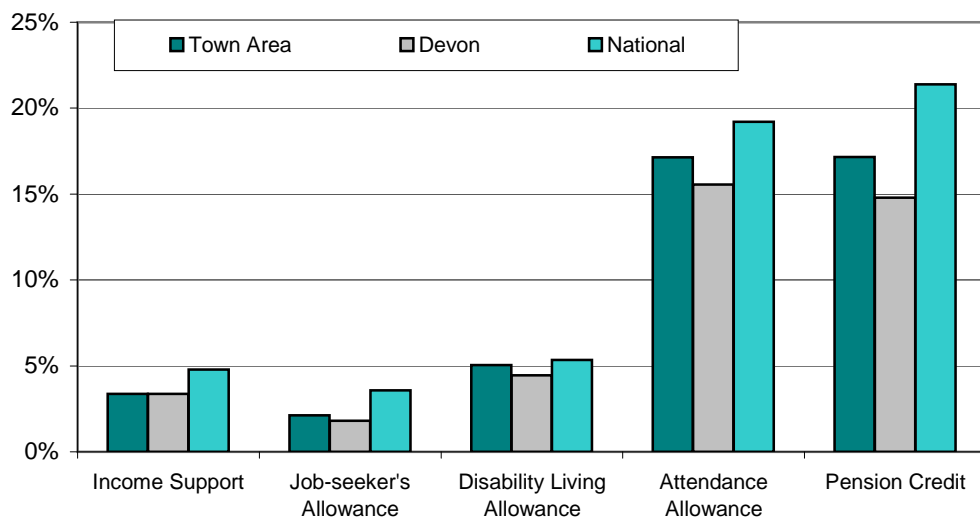
Income - 2008

	<i>Great Torrington</i>	<i>Remainder</i>	<i>Town Area</i>	<i>Torrige</i>	<i>Devon</i>	<i>National</i>
Average income (£)	24,800	27,500	26,300	25,500	26,800	35,100



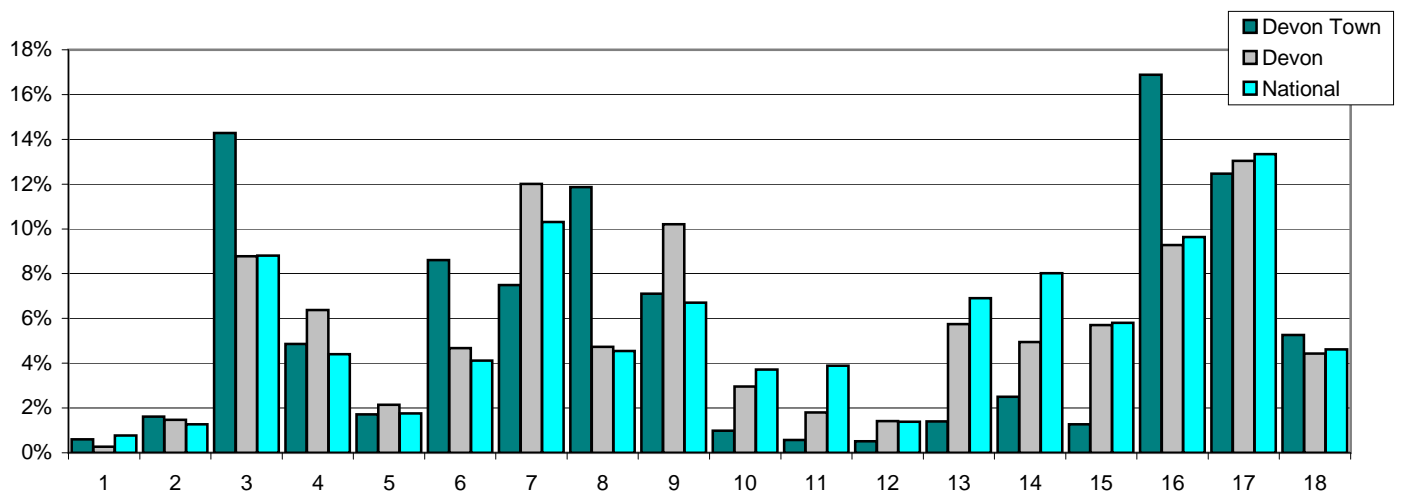
Benefits - 2011

Percent of:	<i>Great Torrington</i>	<i>Remainder</i>	<i>Town Area</i>	<i>Torrige</i>	<i>Devon</i>	<i>National</i>
16-59 year olds claiming Income Support	4.7%	2.4%	3.4%	4.1%	3.4%	4.8%
16-64 year olds claiming Job Seekers Allowance	2.7%	1.7%	2.1%	2.3%	1.8%	3.6%
Total population claiming Disability Living Allowance	4.9%	5.2%	5.0%	5.2%	4.5%	5.3%
65 and older claiming Attendance Allowance	17.7%	16.7%	17.1%	14.4%	15.6%	19.2%
60 and older claiming Pension Credit	20.8%	14.7%	17.2%	16.4%	14.8%	21.4%



Employment - 2010

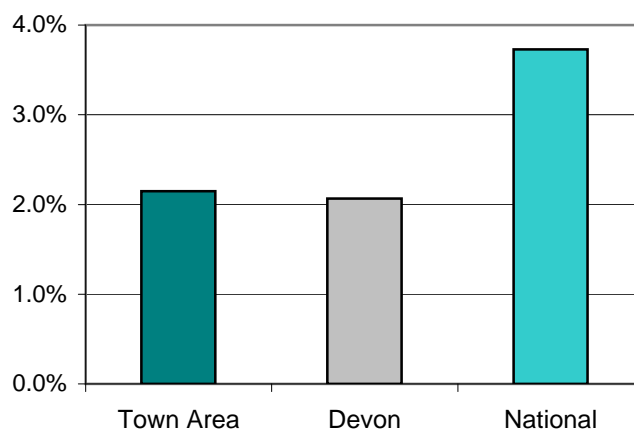
Percent of all employees	Great Torrington	Remainder	Town Area	Torrige	Devon	National
1 Agriculture, forestry & fishing	0.1%	1.0%	0.6%	0.7%	0.3%	0.8%
2 Mining, quarrying & utilities	1.8%	1.5%	1.6%	0.7%	1.5%	1.3%
3 Manufacturing	20.4%	9.3%	14.3%	12.7%	8.8%	8.8%
4 Construction	3.9%	5.6%	4.9%	5.6%	6.4%	4.4%
5 Motor trades	1.1%	2.2%	1.7%	1.4%	2.1%	1.8%
6 Wholesale	1.8%	14.1%	8.6%	4.4%	4.7%	4.1%
7 Retail	11.5%	4.2%	7.5%	11.7%	12.0%	10.3%
8 Transport & storage (inc postal)	5.6%	17.0%	11.9%	4.5%	4.7%	4.6%
9 Accommodation & food services	4.7%	9.1%	7.1%	10.4%	10.2%	6.7%
10 Information & comms	0.3%	1.6%	1.0%	1.1%	3.0%	3.7%
11 Financial & insurance	0.9%	0.3%	0.6%	1.4%	1.8%	3.9%
12 Property	0.7%	0.3%	0.5%	1.2%	1.4%	1.4%
13 Professional, scientific & technical	0.6%	2.0%	1.4%	4.4%	5.7%	6.9%
14 Business administration & support services	2.0%	2.9%	2.5%	5.4%	4.9%	8.0%
15 Public administration & defence	2.8%	0.0%	1.3%	2.7%	5.7%	5.8%
16 Education	17.7%	16.3%	16.9%	12.4%	9.3%	9.6%
17 Health	20.6%	5.8%	12.5%	14.3%	13.0%	13.3%
18 Arts, entertainment, recreation & other services	3.5%	6.7%	5.3%	5.0%	4.4%	4.6%



Note: This table does not include self-employed businesses which can result in low figures especially in the Agriculture, Forestry & Fishing classification.

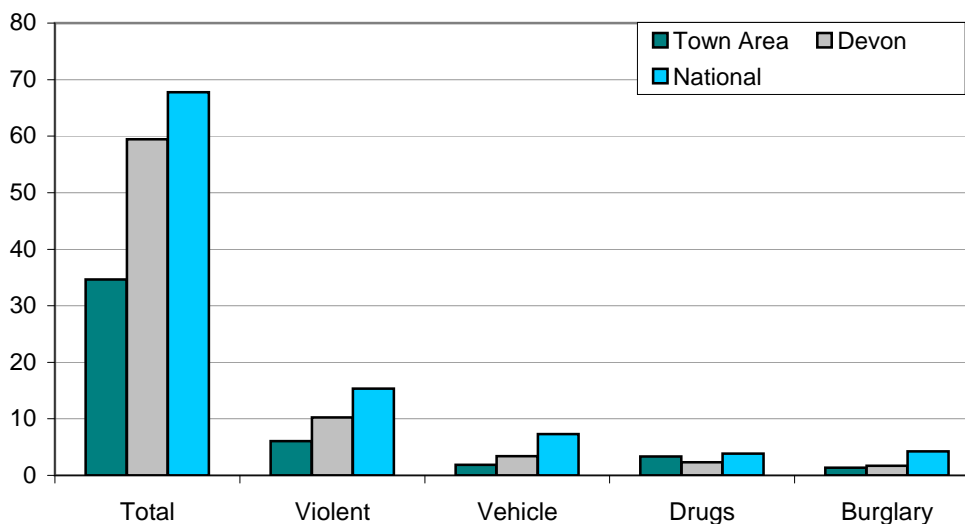
Unemployment - 2011

	<i>Great Torrington</i>	<i>Remainder</i>	<i>Town Area</i>	<i>Torrige</i>	<i>Devon</i>	<i>National</i>
Number unemployed	114	99	213	1,010	9,451	1,461,644
% of working age population	3.3%	1.5%	2.3%	2.7%	2.2%	4.0%



Crime - April 2010 - March 2011

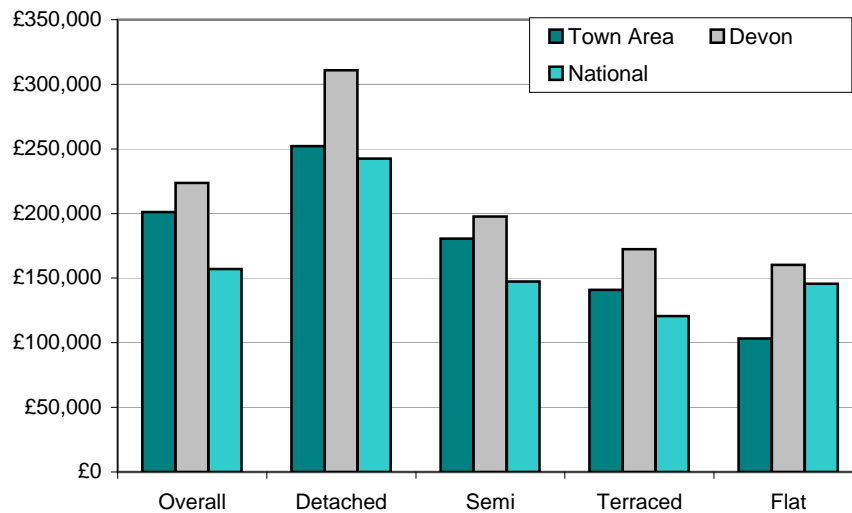
Crimes per 1,000 population	<i>Great Torrington</i>	<i>Remainder</i>	<i>Town Area</i>	<i>Torrige</i>	<i>Devon</i>	<i>National</i>
Total crime	52.3	19.3	34.7	45.7	59.5	67.8
Violent crime	9.5	3.1	6.1	9.2	10.3	15.4
Vehicle crime	1.9	1.8	1.8	1.8	3.4	7.3
Drug offences	6.0	1.0	3.4	1.7	2.3	3.8
House burglary	2.1	0.7	1.4	1.0	1.7	4.2



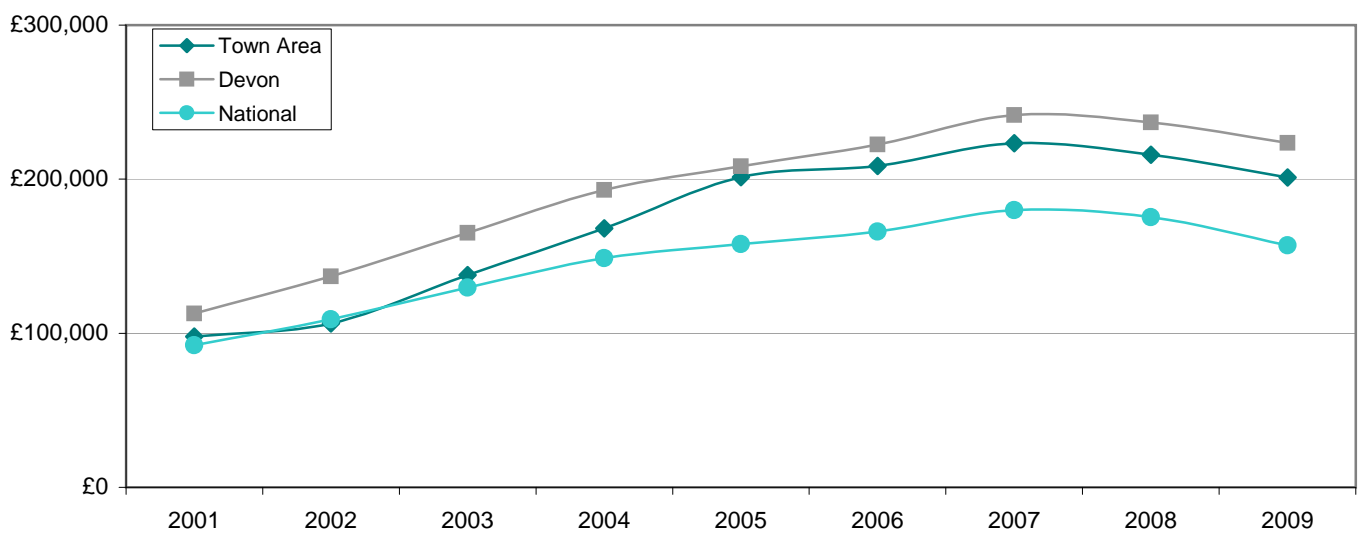
Note: Vehicle Crime Includes: Interfering with a motor vehicle

House prices - 2009

Average prices (£)	Great Torrington	Remainder	Town Area	Torrige	Devon	National
Overall	155,030	249,165	201,127	199,342	223,645	157,033
Detached	193,030	282,048	252,063	253,178	310,899	242,492
Semi-detached	148,778	218,833	180,621	174,827	197,577	147,464
Terraced	135,818	154,066	140,903	147,424	172,313	120,663
Flat/Maisonette	103,400		103,400	158,676	160,202	145,635



Overall average price (£)	2001	2002	2003	2004	2005	2006	2007	2008	2009
Great Torrington	97,846	106,453	137,772	168,173	201,323	208,650	223,260	215,781	201,127
Devon	112,813	136,969	165,264	193,056	208,323	222,478	241,523	236,770	223,645
England & Wales	92,183	108,982	129,632	148,744	157,880	166,063	179,905	175,434	157,033



Place Survey - 2008

The 2008 Place Survey provides information on people's perceptions of their local area and the local services they receive. The survey collects information on 18 national indicators for local government, used to measure local government performance for 152 county councils, metropolitan district councils, London boroughs and unitary authorities.

Further information can be found on the Department for Communities and Local Government's website: www.communities.gov.uk

Figures are the proportion of people responding to the survey who live in the Great Torrington Town Area.

What things are most important in making somewhere a good place to live?

45%	The level of crime
40%	Health services
32%	Affordable decent housing
30%	Access to nature
28%	Clean streets

What things most need improving in this area?

42%	Job prospects
40%	Public transport
39%	Wage levels & local cost of living
36%	Road and pavement repairs
35%	Affordable decent housing

People saying they are very satisfied or fairly satisfied with	Town Area	Devon
Their local area as a place to live	91%	89%
Their local council	40%	52%
Their county council	39%	45%

Education - June 2011

Great Torrington
Remainder
Town Area
Torrige
Devon
National

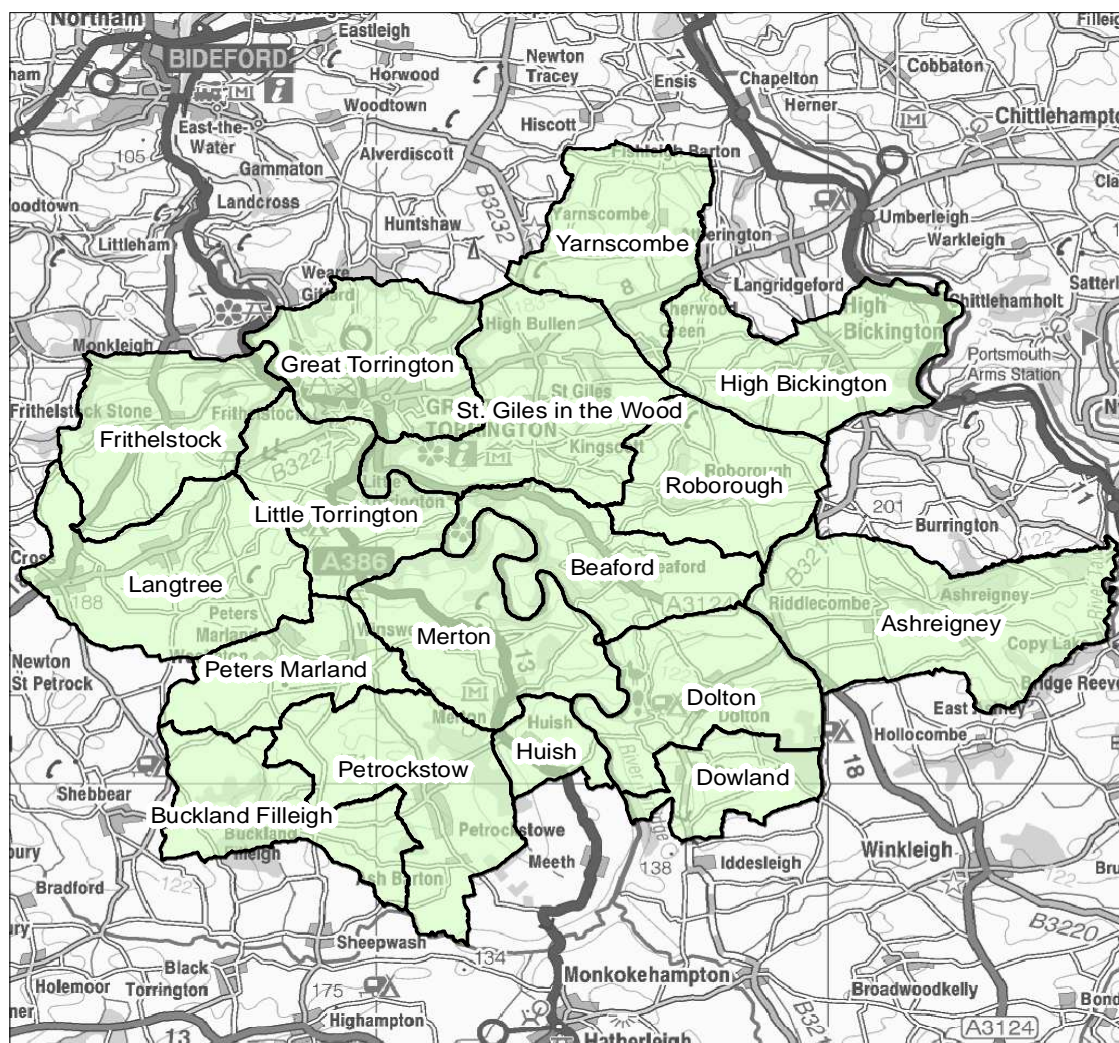
% children achieving Key Stage 2 level 4 or above in

English	76%	83%	79%	82%	85%	81%
Maths	78%	85%	80%	83%	84%	82%
Science	76%	83%	100%	89%	87%	85%

% children achieving 5 or more GCSEs at grades

A*-C	55%	98%	72%	67%	74%	80%
A*-C including	43%	89%	61%	54%	58%	59%
A*-G	83%	126%	98%	95%	96%	n/a

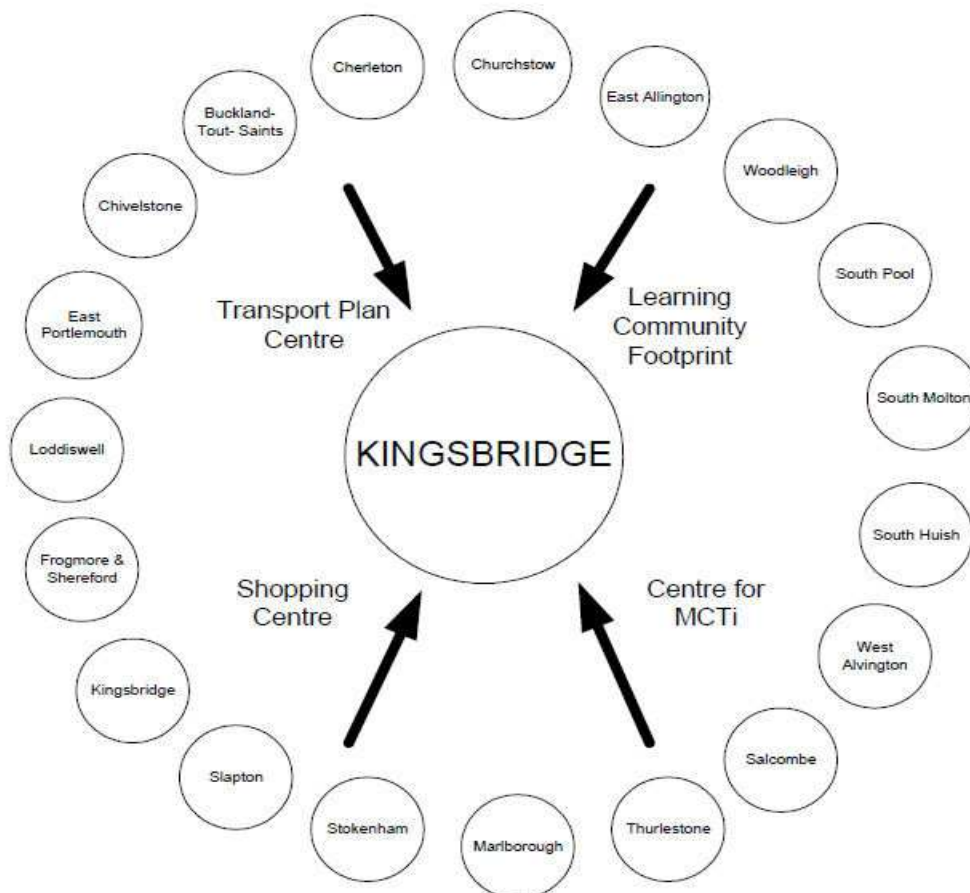
Great Torrington area



Identifying Devon Towns

The main factor that decides a town's hinterland is provision of services; the place that the hinterland looks to in order to provide the things it needs to survive. In order to identify the 28 Devon Towns, analysis of the following services and other relevant factors have been taken into account:

- Local Travel Plans – which are based on public consultation and map local travel patterns, the majority of which are short ones in and around local communities as part of people's daily lives.
- Shopping catchment areas – which are the service most frequently accessed by people.
- Learning Community catchment areas – which have a major influence on where people look to for services. Learning Community catchments do not always follow district or even county boundaries, but are based on a collection of feeder primary schools.
- Market and Coastal Towns Initiative areas - The Market and Coastal Towns Initiative was started after recognition that the health of a market town is vital to the well being of its hinterland, and that many of Devon's market towns were in need of regeneration. It was a Central Government initiative, administered by the RDAs. Over half of Devon was included in the Market and Coastal Towns Initiative.
- Parishes - The boundary definitions are shown in terms of parishes, as they are traditionally the smallest area used for 'clustering'. The diagram below is an illustration of how this works for one Devon Town: Kingsbridge.



Exeter also provides a similar or related "market town" function as well as being a sub regional centre with a larger sphere of influence.

Further information and sources

Population : 2001 - Census © Crown copyright
2011 - Patient and Practitioner Services Agency, national figures from mid-2010 estimate

Population attributes : Mosaic Public Sector 2010 © Experian

Deprivation : Indices of Deprivation 2010
Department for Communities and Local Government
© Crown copyright
<http://www.communities.gov.uk/indices>

Children Living in Poverty : Child Poverty Unit 2011
<http://endchildpoverty.org.uk/>

Fuel Poverty Households : Fuel Poverty Indicator 2008
<http://www.fuelpovertyindicator.org.uk/>

Income : Estimates based on Experian's Mosaic Household dataset 2008
© Experian

Benefits : May 2011 - Department for Work and Pensions
© Crown copyright
<http://research.dwp.gov.uk/asd/tabtool.asp>

Employment : Business Register and Employment Survey/Annual Business Inquiry 2010
Office for National Statistics © Crown copyright
<http://www.nomisweb.co.uk>

Unemployment : April 2011 - Office for National Statistics
© Crown copyright
<http://www.nomisweb.co.uk>

Crime : April 2010 - March 2011
Devon and Cornwall Constabulary

Education : June 2011 - Children and Young People's Directorate
Devon County Council
Local figures relate to children living in an area and attending a Devon County Council

House prices : Land Registry 2009
© Crown copyright
National figures relates to England and Wales. Overall national house price is weighted by number of sales in each month. National house prices by type are simple averages of monthly averages - this figure may be skewed if there were a large number of sales in a

Place Survey : Department for Communities and Local Government 2008
© Crown copyright
<http://www.communities.gov.uk/publications/localgovernment/newplacesurvey>