

SITE

Name: Bellever Tor

Parish: Dartmoor Forest

Local Authority: [Dartmoor National Park](#)

National Grid Ref: SX 645 764

OS Sheets: 1:50k 191 1:10k SX67 NW, **GS Sheet** 1:50k 338

Locality Description: Granite tor 1.25km south west of Bellever.

Nature and Status of Site: Low, widespread, hill-crest tor and clitter on the Dartmoor Granite. The tor is a County Geological Site (www.devonrigs.org.uk).

Summary of Geological / Geomorphological Interest: A good example of a granite tor with very well developed tabular jointing and with gullies and clitter. The granite is a biotite granite (biotite is a dark platy mineral) with some very large feldspar crystals, and rare remnants of the original country rock.

Site sensitivity: The outcrop should not be scarred or damaged by hammering. The lithology can be examined from loose material.

Safety Considerations: Generally safe, provided due care is taken on rough ground and near steep faces.

Educational Age Groups: Secondary, College/6th Form, University.

Parking and Access: The site is best accessed on foot via the forestry tracks leading 1km south-westwards from the Forestry Commissions car park at Bellever Forest. Alternatively, access can be gained via the footpath northwards from the car park at Dunnabridge Pound (1.75km). Footpaths also link up with the Higher Cherrybrook site (2.0km) to the north-west (see separate Register entry), where there is also a car park (although there is a problem of theft from vehicles in this location).

There are a number of daily bus services from Princetown to Bellever. For timetable details, visit www.traveline.org.uk.

Site Owner: Forestry Commission. Tel. 01392 832262 or visit the website [online](#).

Detailed Geology: Dartmoor Granite, Carboniferous-Permian. Biotite granite with sparse orthoclase feldspar megacrysts, patchy tourmalinisation and rare xenoliths. Prominent, near horizontal, tabular jointing, spaced at 100-300mm, causing the rock to split into large slabs in places. The tor is cut by widely spaced, vertical joints, aligned about north-south, producing wide gully features.

References:

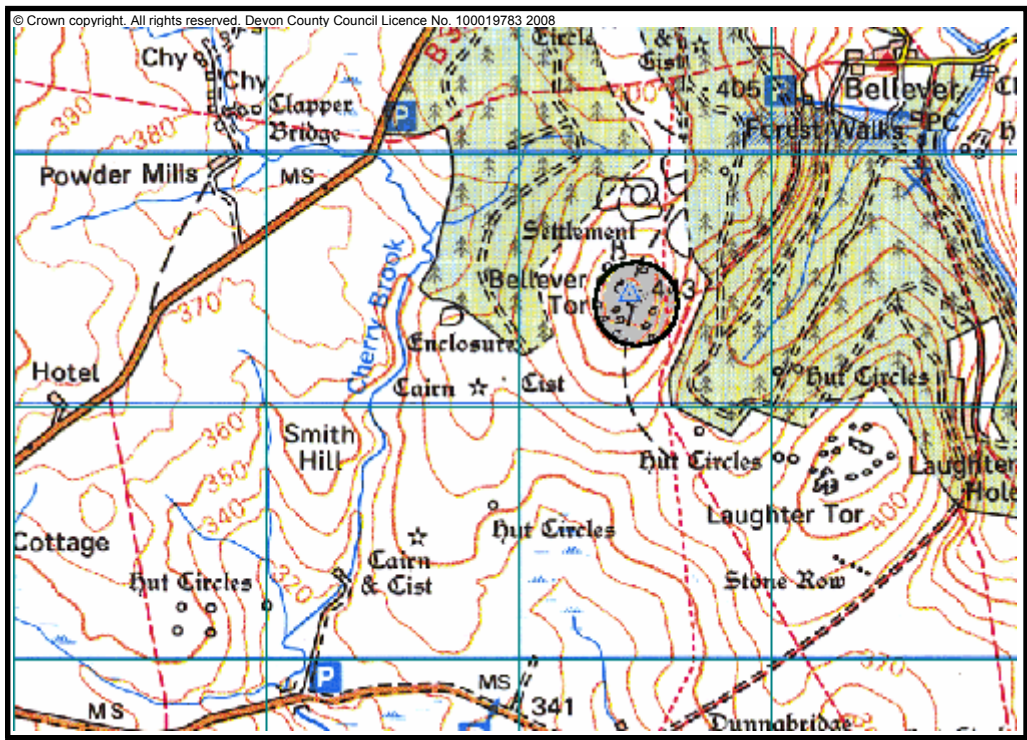
Taylor, R T, & Freshney E C Report on the Assessment of County Geological Sites in the Dartmoor National Park (prepared for Dartmoor National Park Authority) *ERC Report 98/371* (Earth Resources Centre, University of Exeter, 1998)

For further information on the geology and geomorphology of Dartmoor go to: www.dartmoor-npa.gov.uk/

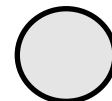
LOCATION PLAN

BELLEVER TOR DARTMOOR FOREST, DARTMOOR NATIONAL PARK

National Grid Ref: SX 645 764



Scale 1:25,000



Site
locality

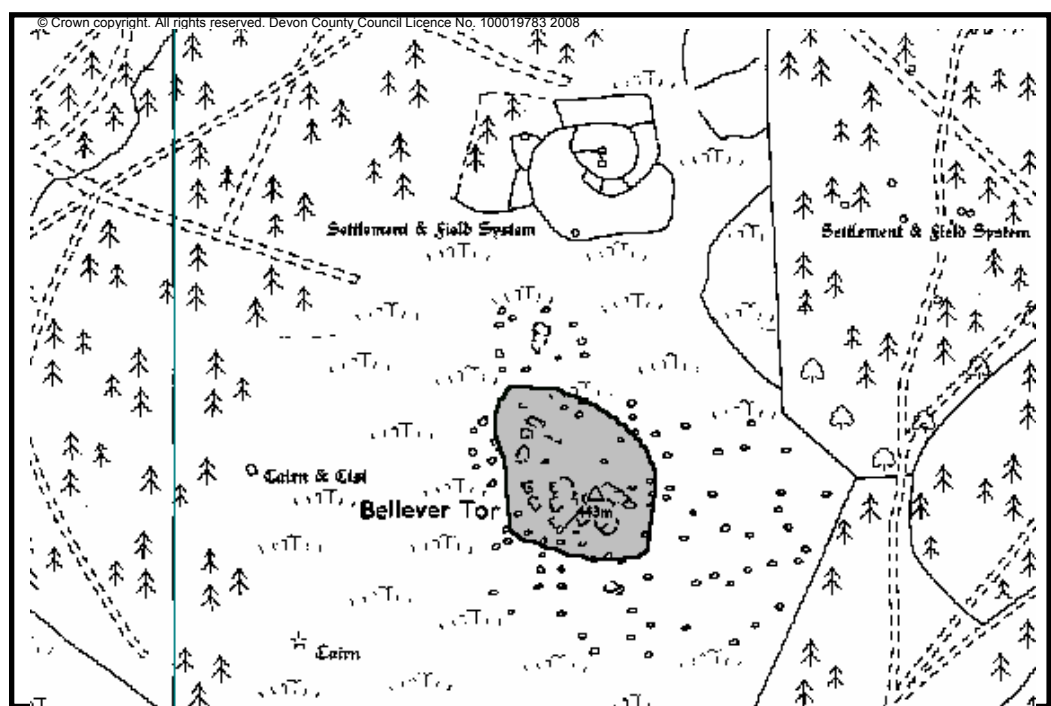
Parking and Access

- The site is best accessed on foot via the forestry tracks leading 1km south-westwards from the Forestry Commissions car park at Bellever Forest. Alternatively, access can be gained via the footpath northwards from the car park at Dunnabridge Pound (1.75km).
- There are a few daily bus services from Princetown to Bellever

SITE PLAN

BELLEVER TOR DARTMOOR FOREST, DARTMOOR NATIONAL PARK

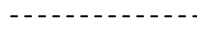
National Grid Ref: SX 645 764



Approx. Extent of Site



Forestry tracks

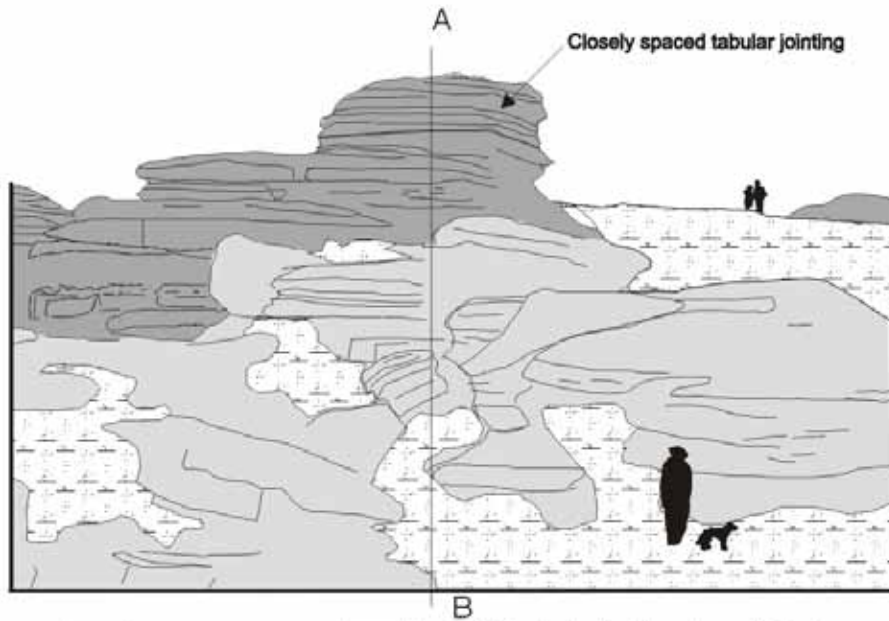


Scale 1 : 7,500

Main Points of Interest:

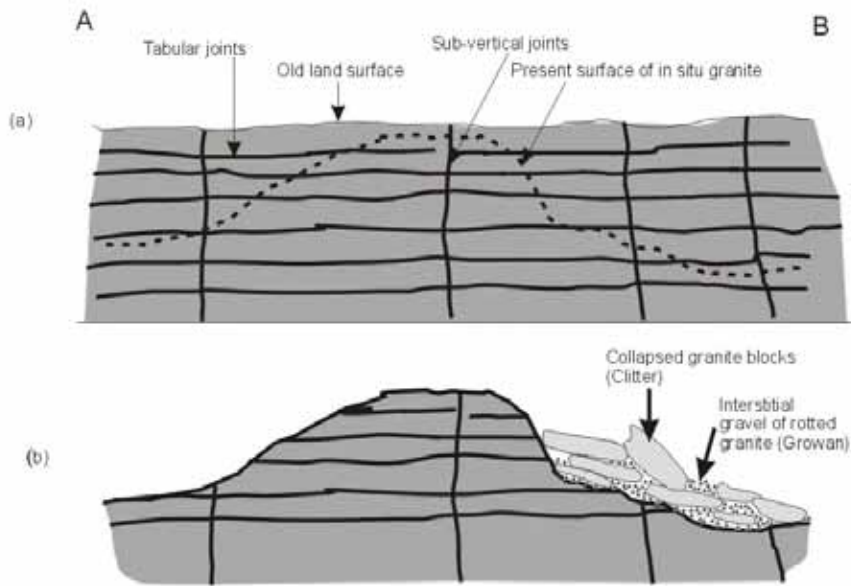
- Good example of granite tor with very well developed jointing causing the rock to split into large slabs and producing wide gullies.
- A biotite granite with large feldspar crystals and rare remnants of the original country rock.

BELLEVER TOR



Area of in situ granite
 Area of disturbed and collapsed granite blocks (Clitter)

View: northeastwards towards part of Bellever Tor



Cross sections through the tor towards the viewer

- (a) Prior to the deep weathering of the granite and before the formation of the tor
- (b) Present day situation

Sketch by Dr E Freshney

BELLEVER TOR



General view of Bellever Tor, as interpreted above (note well developed tabular jointing and clitter slopes below).