

The latest version of this fact sheet can be found on www.devon.gov.uk/factsheets or from Care Direct

Care Direct
0845 1551 007
adult social care information & advice

Devon Partnership
NHS Trust



Devon
County Council

factsheet

www.devon.gov.uk/socialcare

Comments on this factsheet - ring Care Direct

**Factsheet 24 – 09 December 2010
(4 pages)**



Residential/nursing care for younger adults with disabilities



People with learning disabilities and other vulnerable adults who need accommodation could choose to live in a care home.

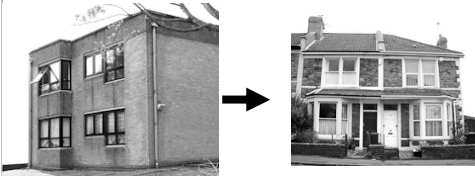
Important things about care homes



Care homes provide care and support.



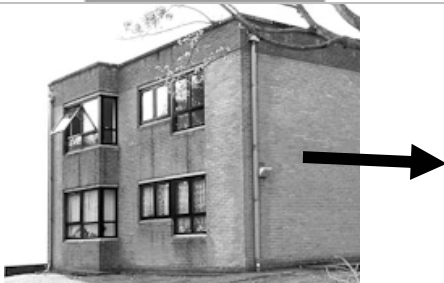
The money you pay to a care home covers everything you need in your daily life.



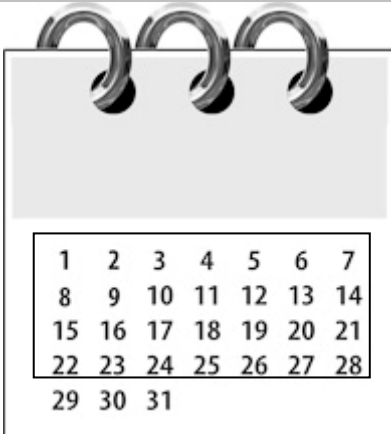
If there is a problem with the accommodation or care you can move to somewhere else.



You only get a fixed amount of money in a care home and you can not claim housing benefit.



You could be asked to leave the home at any time but



you would have to be told at least 4 weeks before.



If you live in a care home you can't choose who you live with or who cares for you.



You can have a say about day to day things but this would have to be done with other people who live in the home.

Types of care homes



Care homes can be small homes for 4 or 5 people or



larger homes for up to 20 people.



Care homes for younger adults may offer accommodation for a long time or



young people may choose to live in a care home for a short time while they learn skills to help them live on their own.

Further factsheets can be found online at www.devon.gov.uk/factsheets

Also see the Learning Disability Devon website:
www.learningdisabilitydevon.org.uk/

If you would like this factsheet in a different format such as Braille or audio, or in a different language, please contact our Customer Service Centre on 0845 155 1015 or email customer@devon.gov.uk.

Factsheet 24 – 09 December 2010 (4 pages)