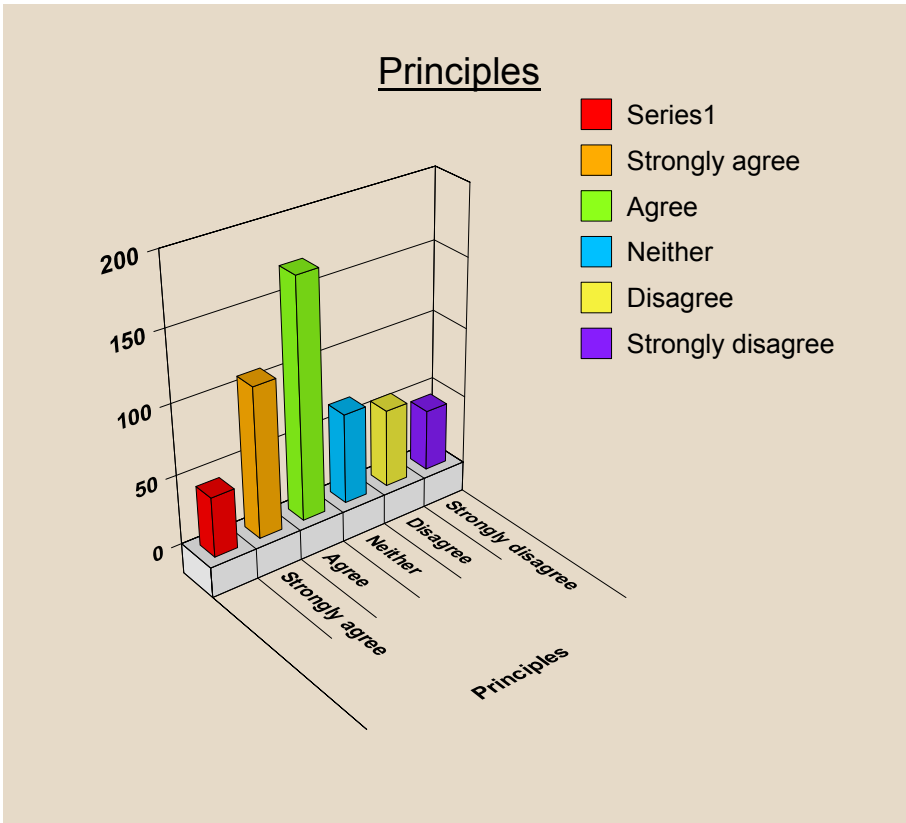
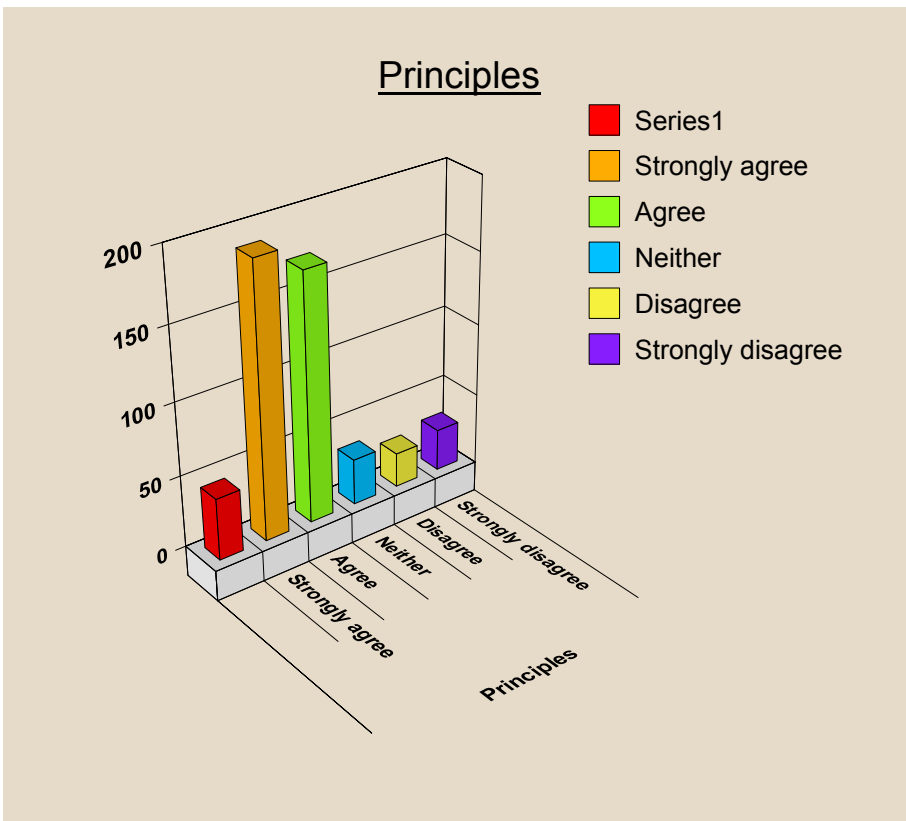


Q.1. Maintain Social Services income from charging for non-residential services at the current level



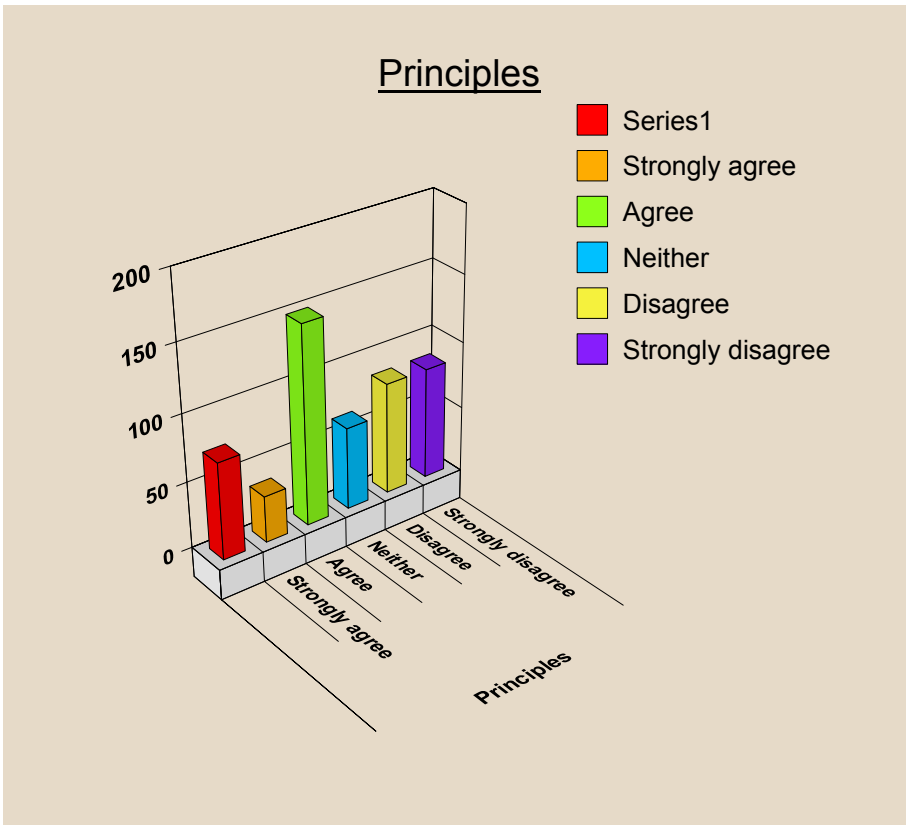
Absolute Respondents		
Base		487
Principles	N/A	43
	Strongly agree	108
	Agree	171
	Neither	65
	Disagree	56
	Strongly disagree	44

Q.2. Adopt a fair and consistent approach across all client groups and not treat people differently because of their age, gender or type of disability



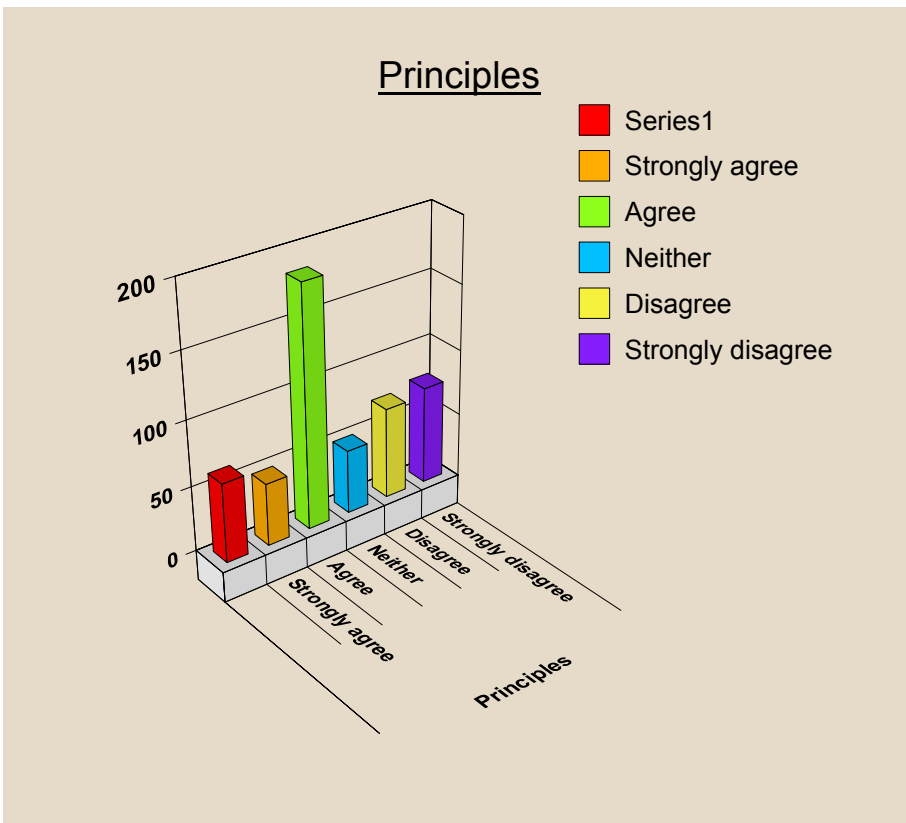
Absolute Respondents		
Base		487
Principles	N/A	43
	Strongly agree	188
	Agree	171
	Neither	32
	Disagree	24
	Strongly disagree	29

Q.3. Charge for all eligible non-residential services in a care package



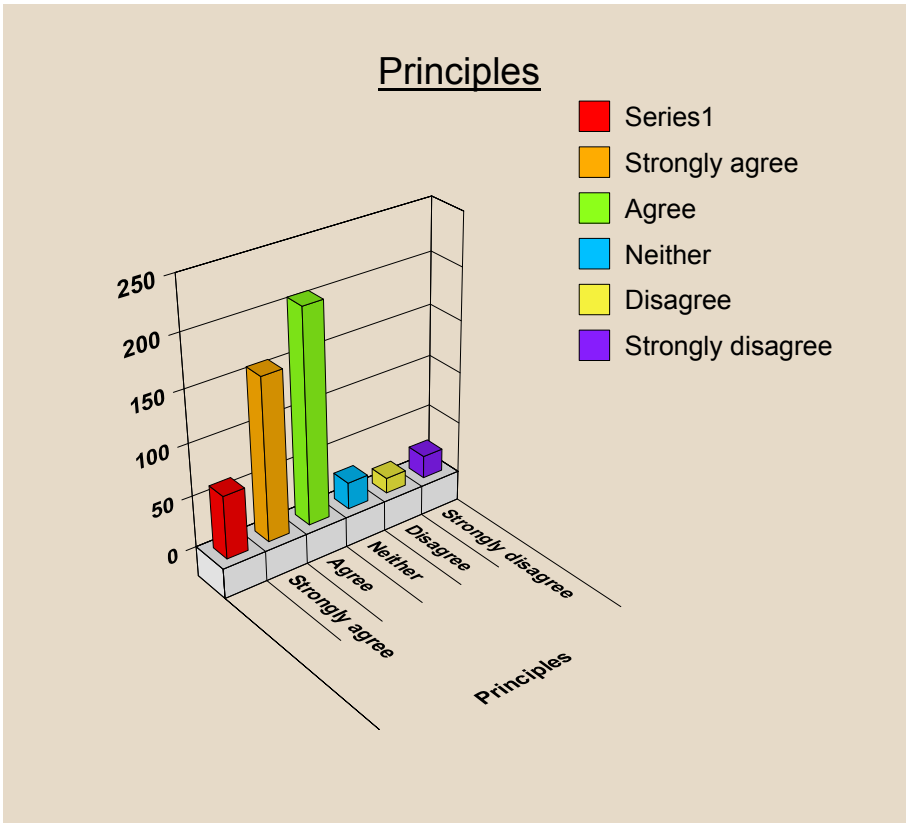
Absolute Respondents		
Base		487
Principles	N/A	73
	Strongly agree	35
	Agree	149
	Neither	62
	Disagree	84
	Strongly disagree	84

Q.4. Charge the standard rate for services unless a financial assessment determines otherwise



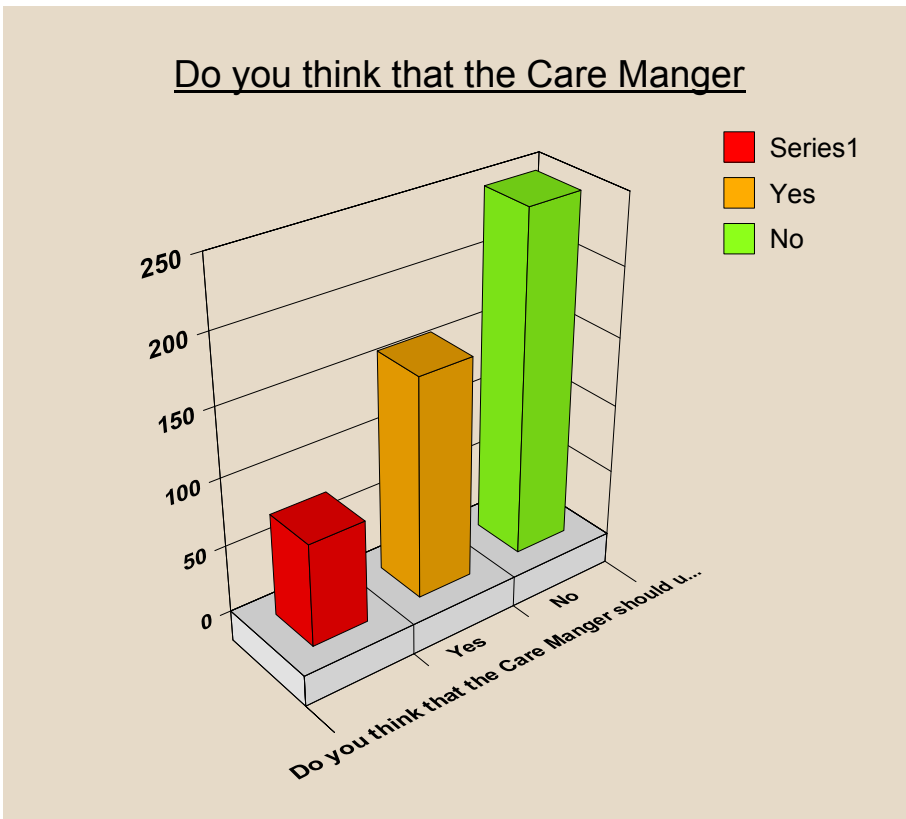
Absolute Respondents		
Base		487
Principles	N/A	61
	Strongly agree	48
	Agree	184
	Neither	49
	Disagree	70
	Strongly disagree	75

Q.5. Provide information, advise and alternative options to people to maximise their personal income and choice over services



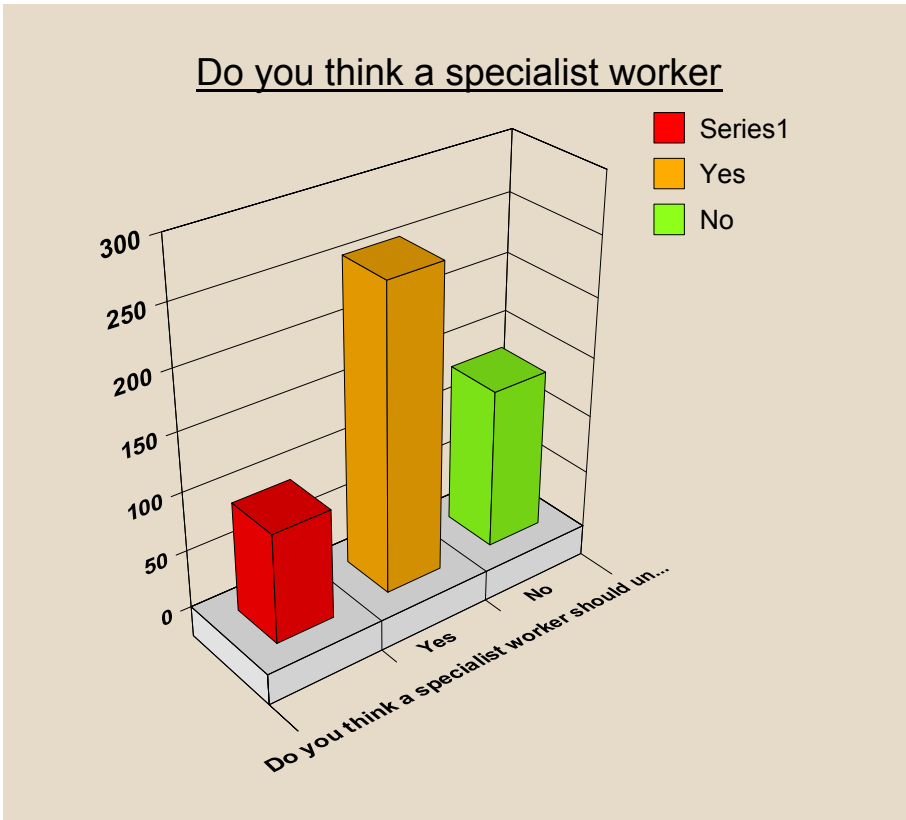
Absolute Respondents		
Base		487
Principles	N/A	61
	Strongly agree	157
	Agree	206
	Neither	26
	Disagree	15
	Strongly disagree	22

Q.6. Do you think that the Care Manager should undertake the financial assessment and benefits check?



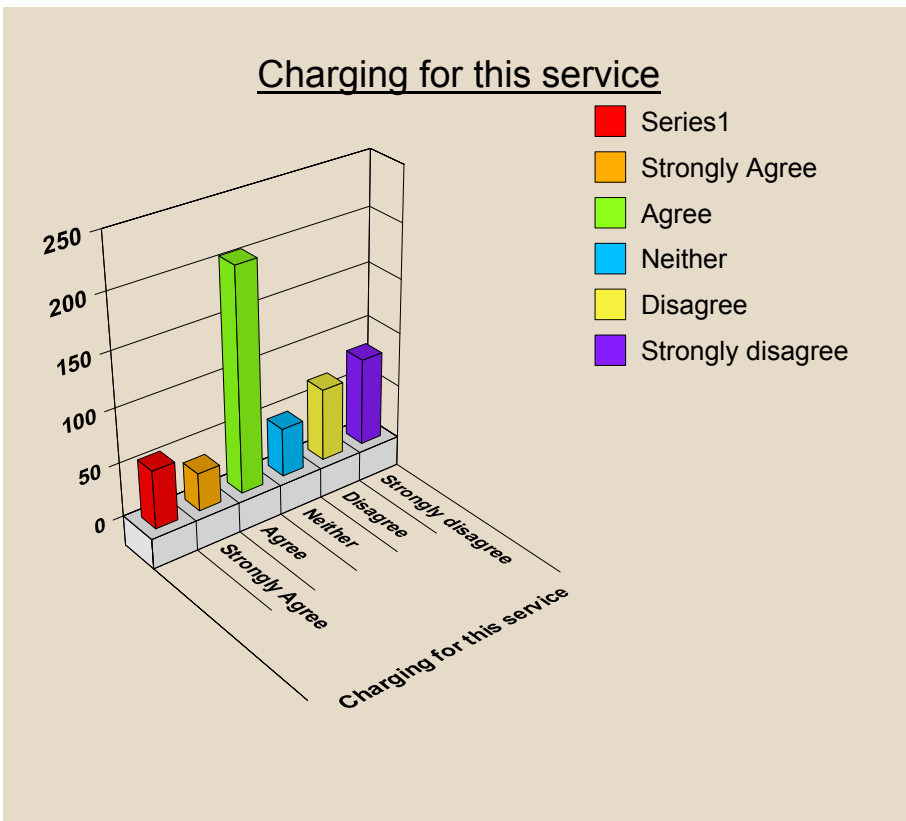
Absolute Respondents		
Base		487
Do you think that the Care Manger should u...	N/A	76
	Yes	162
	No	249

Q.7. Do you think a specialist worker should undertake the financial assessment and benefits check?



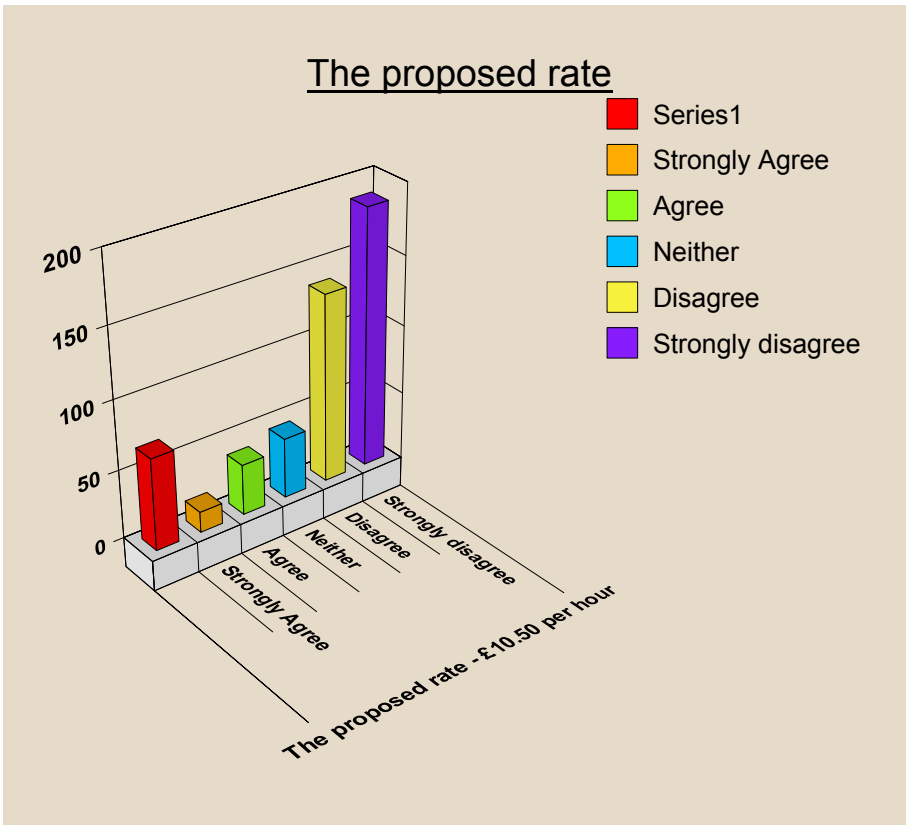
Absolute Respondents		
Base		487
Do you think a specialist worker should un...	N/A	94
	Yes	257
	No	136

Q.8. Personal Care – Help with personal tasks in the home, dressing, washing etc... for a charge



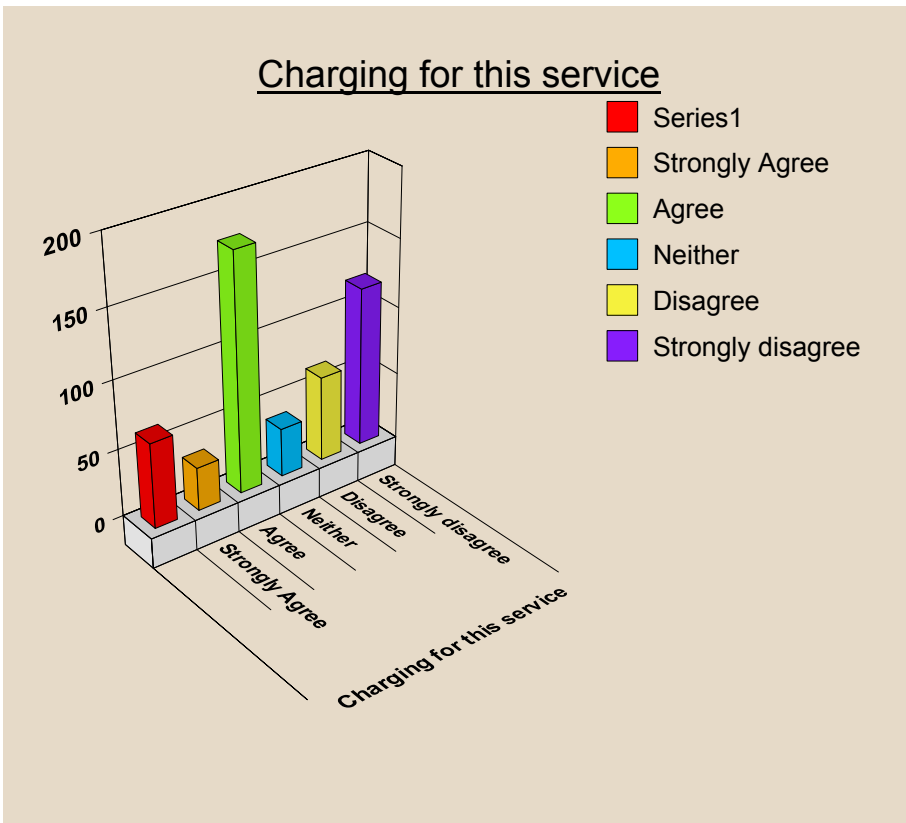
Absolute Respondents		
Base		487
Charging for this service	N/A	54
	Strongly Agree	35
	Agree	205
	Neither	45
	Disagree	67
	Strongly disagree	81

Q.9. The proposed rate for personal care tasks - £10.50 per hour



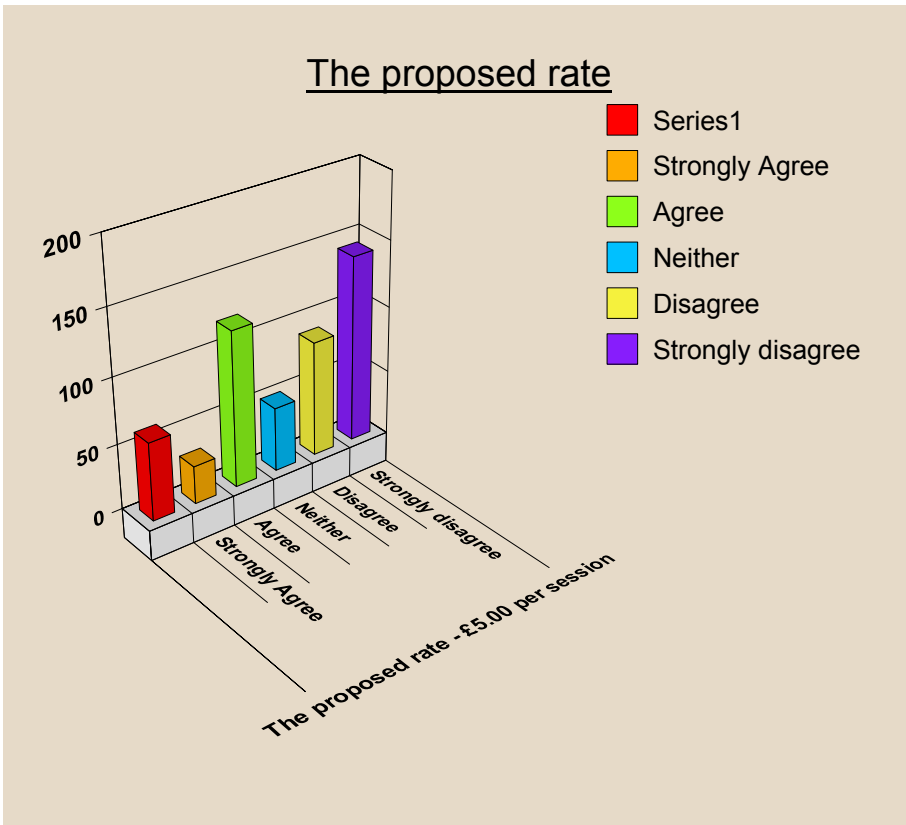
Absolute Respondents		
Base		487
The proposed rate - £10.50 per hour	N/A	67
	Strongly Agree	15
	Agree	37
	Neither	44
	Disagree	137
	Strongly disagree	187

Q.10. Day Care – Going out for the day to a centre/home for a charge



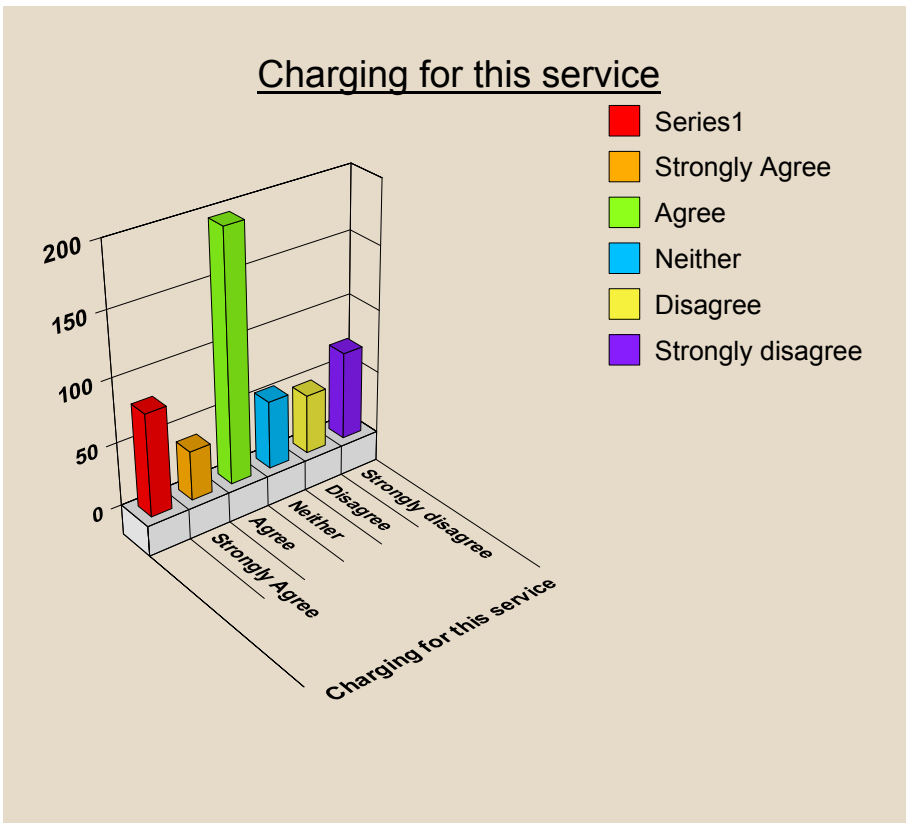
Absolute Respondents		
Base		487
Charging for this service	N/A	63
	Strongly Agree	32
	Agree	175
	Neither	36
	Disagree	63
	Strongly disagree	118

Q.11. The proposed rate for day care - £5.00 per session



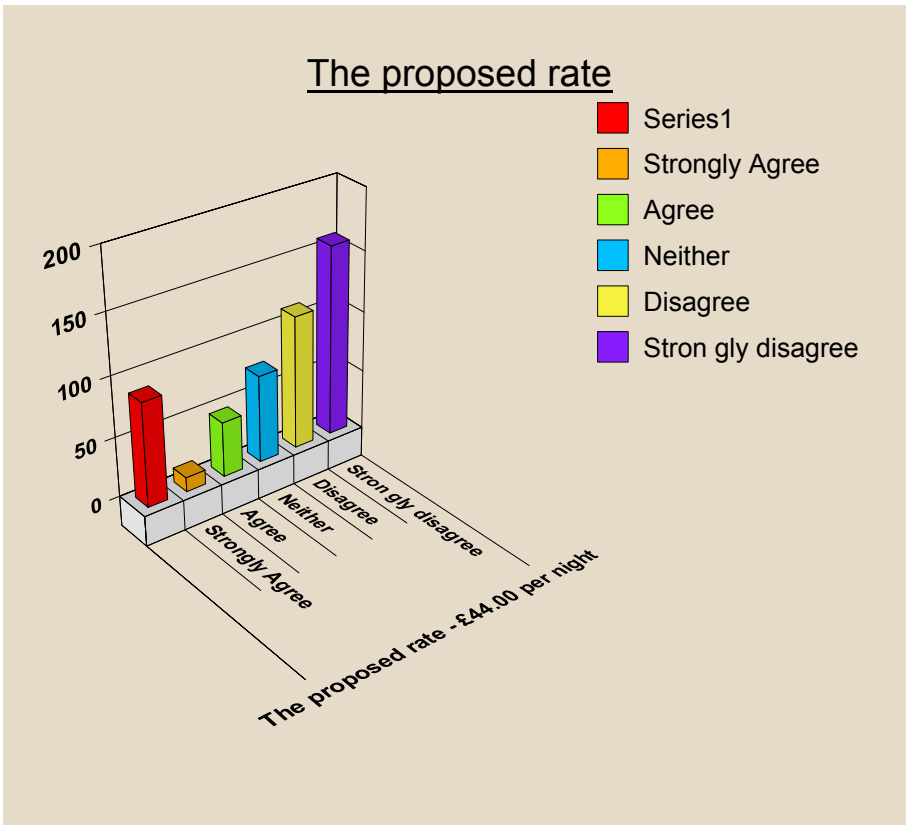
Absolute Respondents		
Base		487
The proposed rate - £5.00 per session	N/A	60
	Strongly Agree	29
	Agree	119
	Neither	49
	Disagree	88
	Strongly disagree	142

Q.12. Night sitting/sleeping – Having a paid carer in the house overnight for a charge



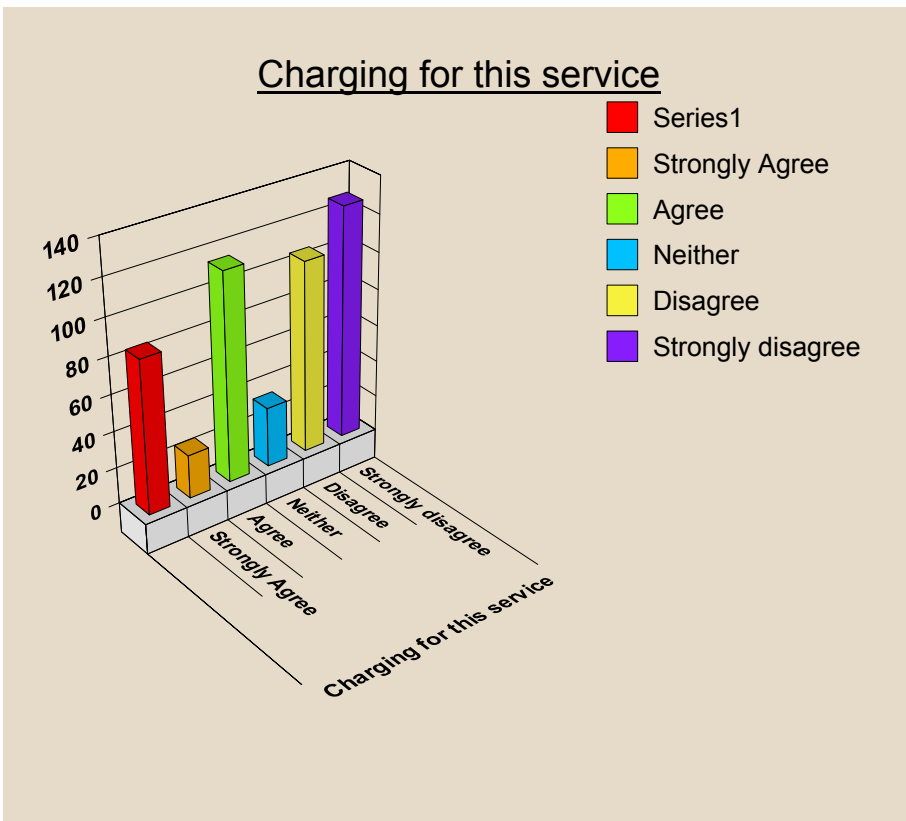
Absolute Respondents		
Base		487
Charging for this service	N/A	81
	Strongly Agree	39
	Agree	196
	Neither	54
	Disagree	47
	Strongly disagree	70

Q.13. The proposed rate for night sitting/sleeping - £44.00 per night



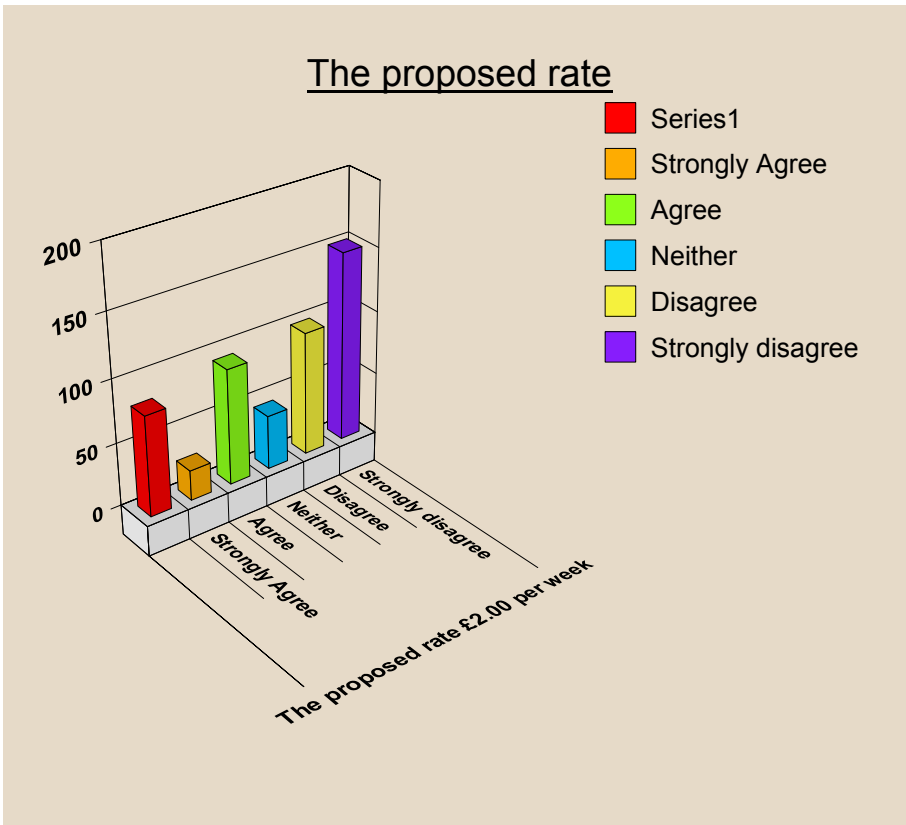
Absolute Respondents		
Base		487
The proposed rate - £44.00 per night	N/A	87
	Strongly Agree	12
	Agree	46
	Neither	73
	Disagree	111
	Strongly disagree	158

Q.14. Independence equipment – items of equipment to assist with personal tasks in the home/bathroom/kitchen etc... for a charge



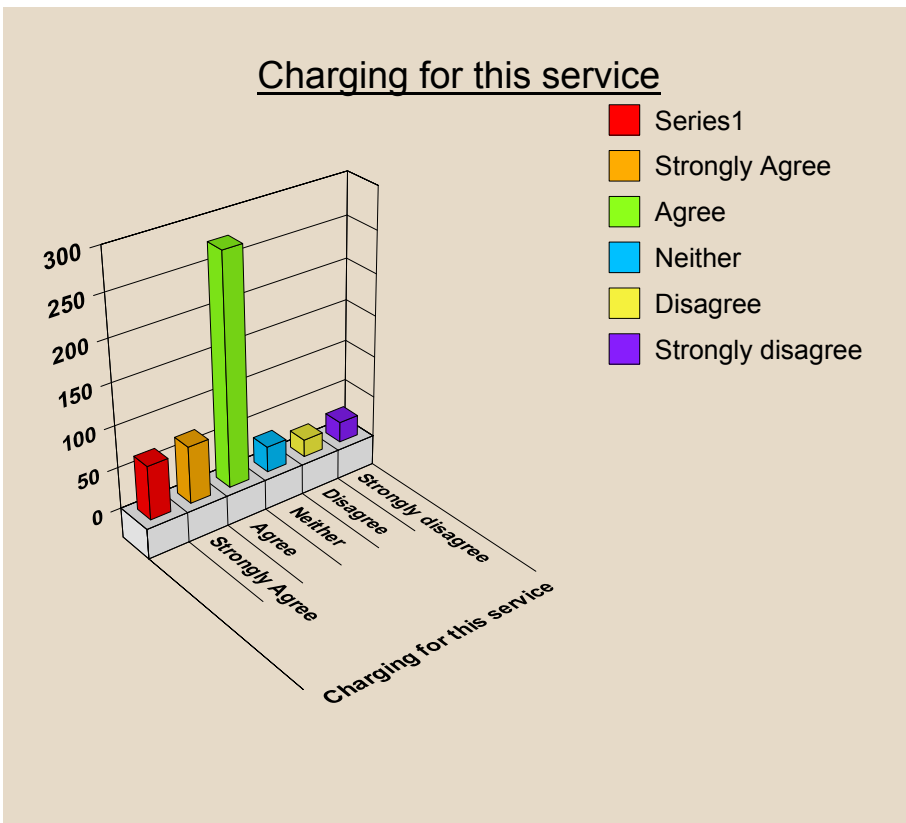
Absolute Respondents		
Base		487
Charging for this service	N/A	84
	Strongly Agree	24
	Agree	114
	Neither	33
	Disagree	105
	Strongly disagree	127

Q.15. The proposed rate for independence equipment - £2.00 per week



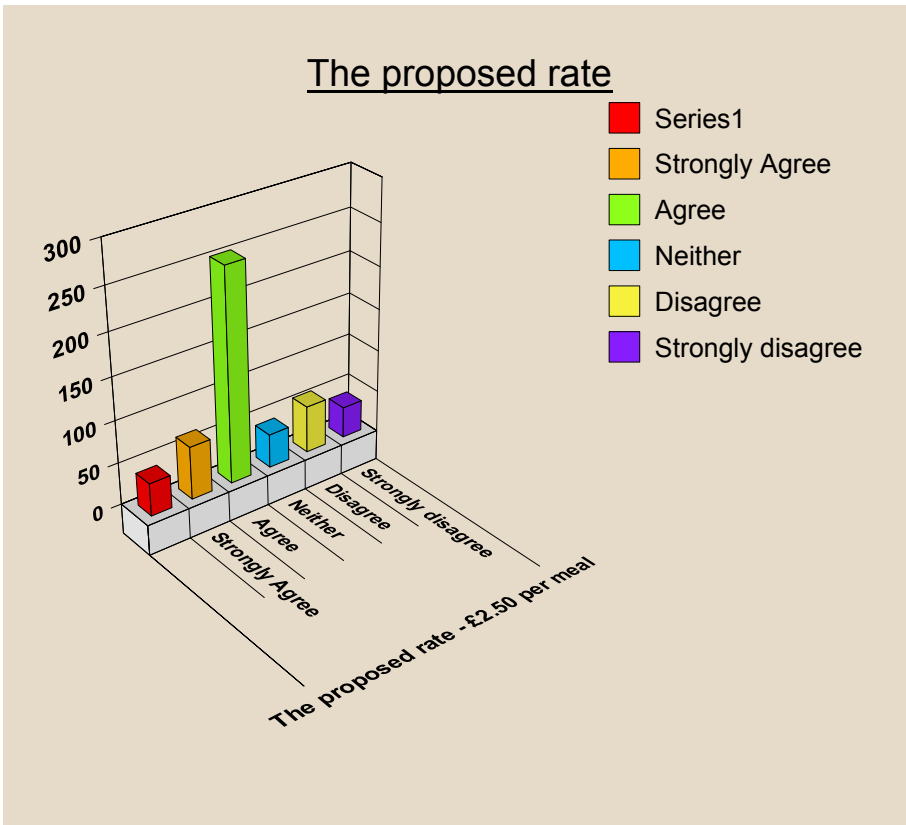
Absolute Respondents		
Base		487
The proposed rate £2.00 per week	N/A	80
	Strongly Agree	24
	Agree	92
	Neither	43
	Disagree	98
	Strongly disagree	150

Q.16. Meals – A main meal provided for you at home or in a day care setting for a charge



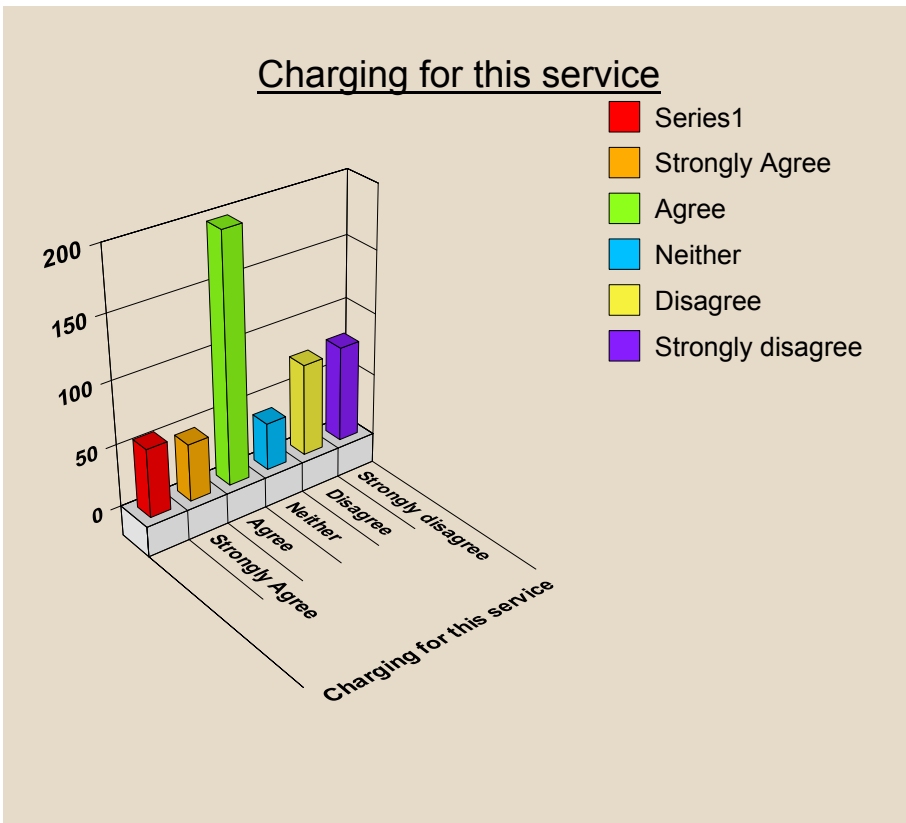
Absolute Respondents		
Base		487
Charging for this service	N/A	65
	Strongly Agree	69
	Agree	276
	Neither	31
	Disagree	21
	Strongly disagree	25

Q.17. The proposed rate - £2.50 per meal



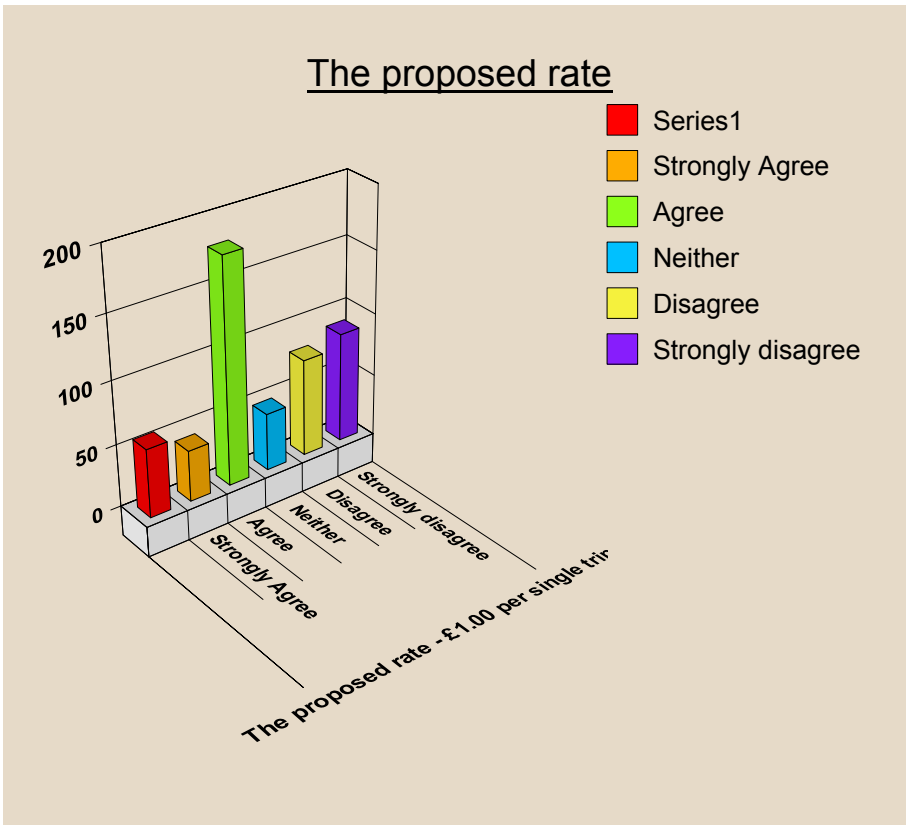
Absolute Respondents		
Base		487
The proposed rate - £2.50 per meal	N/A	39
	Strongly Agree	63
	Agree	252
	Neither	40
	Disagree	56
	Strongly disagree	37

Q.18. Transport to and from day care or other services for a charge



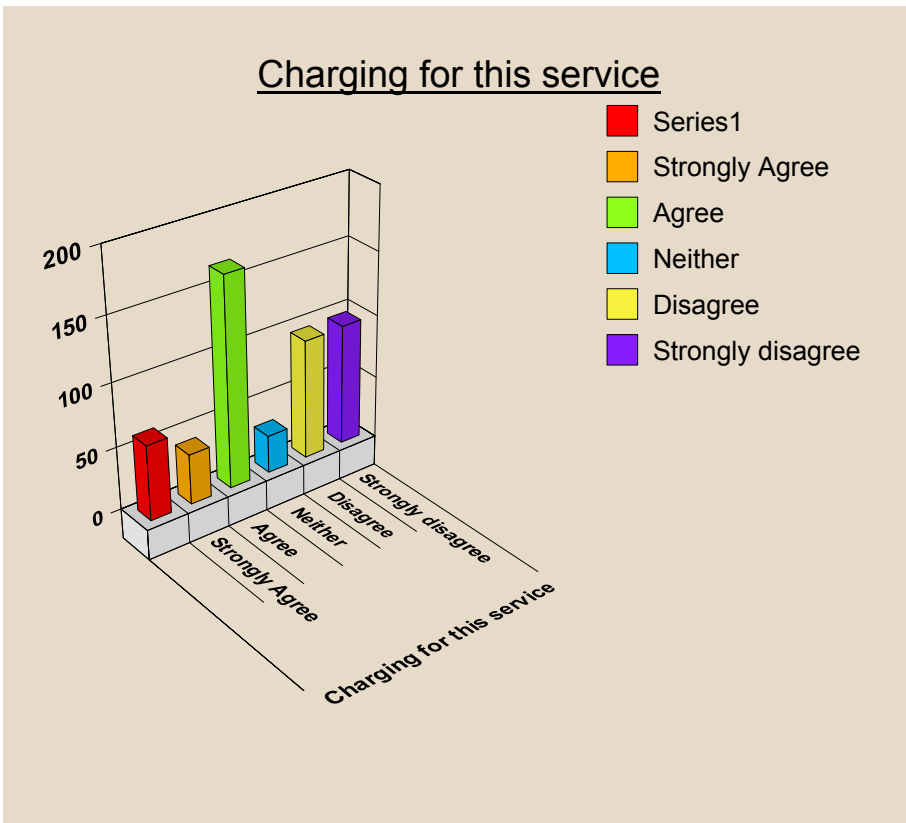
Absolute Respondents		
Base		487
Charging for this service	N/A	55
	Strongly Agree	46
	Agree	197
	Neither	38
	Disagree	74
	Strongly disagree	77

Q.19. The proposed rate for transport - £1.00 per single trip



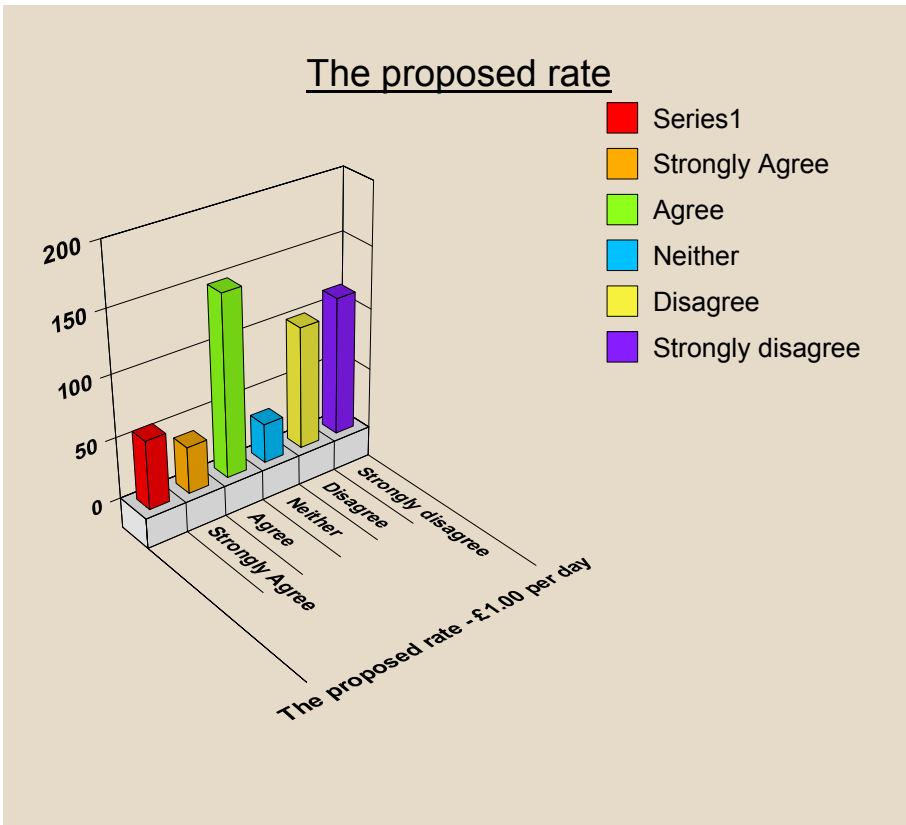
Absolute Respondents		
Base		487
The proposed rate - £1.00 per single trip	N/A	55
	Strongly Agree	41
	Agree	179
	Neither	46
	Disagree	78
	Strongly disagree	88

Q.20. Beverages at day care – refreshments provided in a day care setting



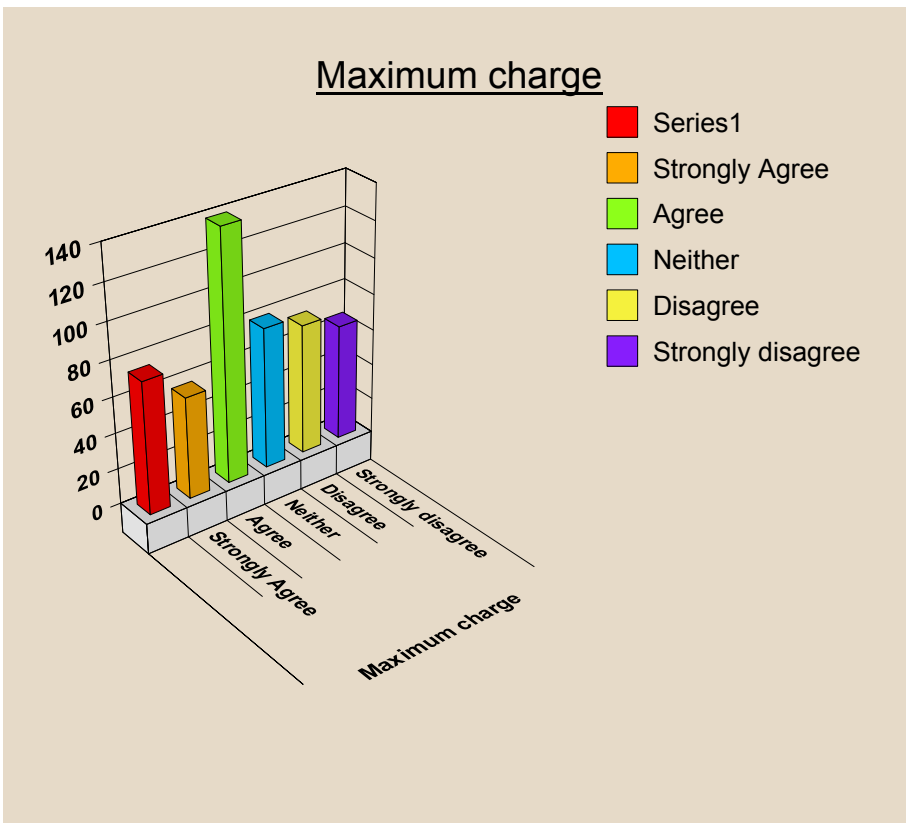
Absolute Respondents		
Base		487
Charging for this service	N/A	60
	Strongly Agree	40
	Agree	166
	Neither	30
	Disagree	95
	Strongly disagree	96

Q.21. The proposed rate for refreshments - £1.00 per day



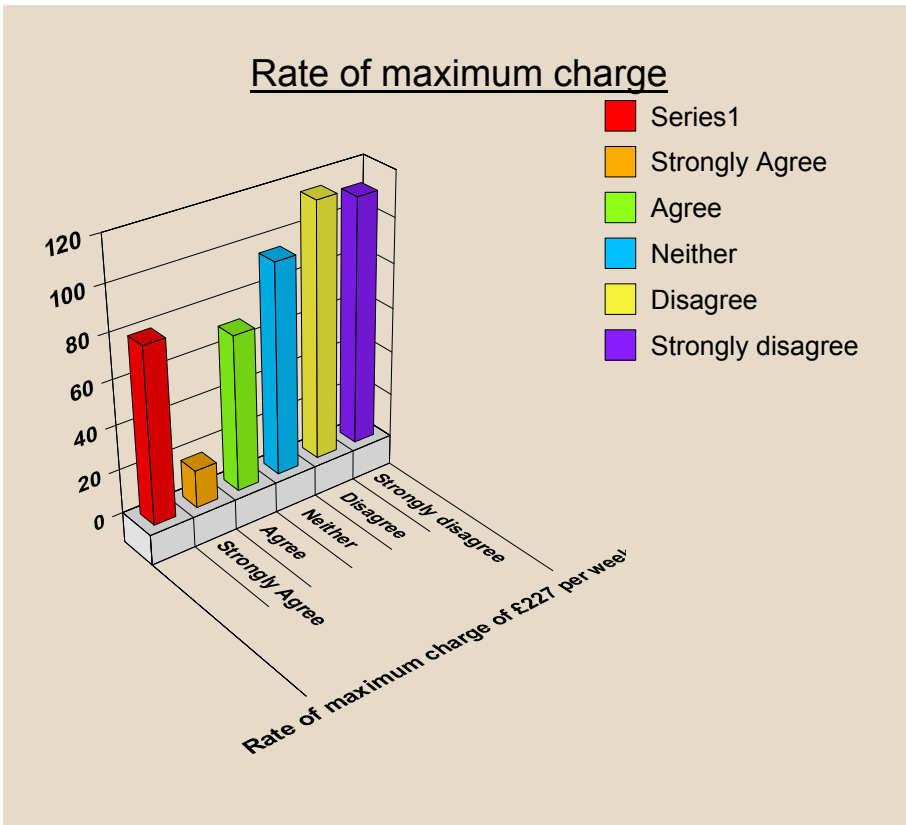
Absolute Respondents		
Base		487
The proposed rate - £1.00 per day	N/A	56
	Strongly Agree	38
	Agree	148
	Neither	32
	Disagree	100
	Strongly disagree	113

Q.22. Maximum charge – we are proposing a maximum charge equivalent to 95% of what we currently pay for residential care



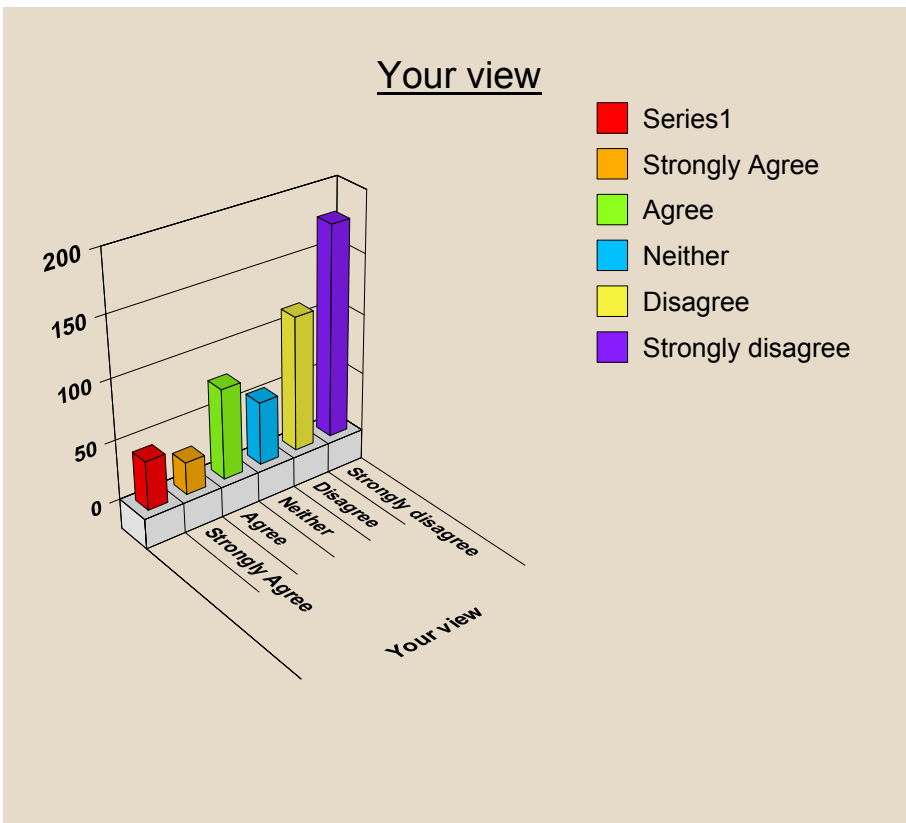
Absolute Respondents		
Base		487
Maximum charge	N/A	74
	Strongly Agree	57
	Agree	139
	Neither	79
	Disagree	73
	Strongly disagree	65

Q.23. Rate of maximum charge of £227.00 per week



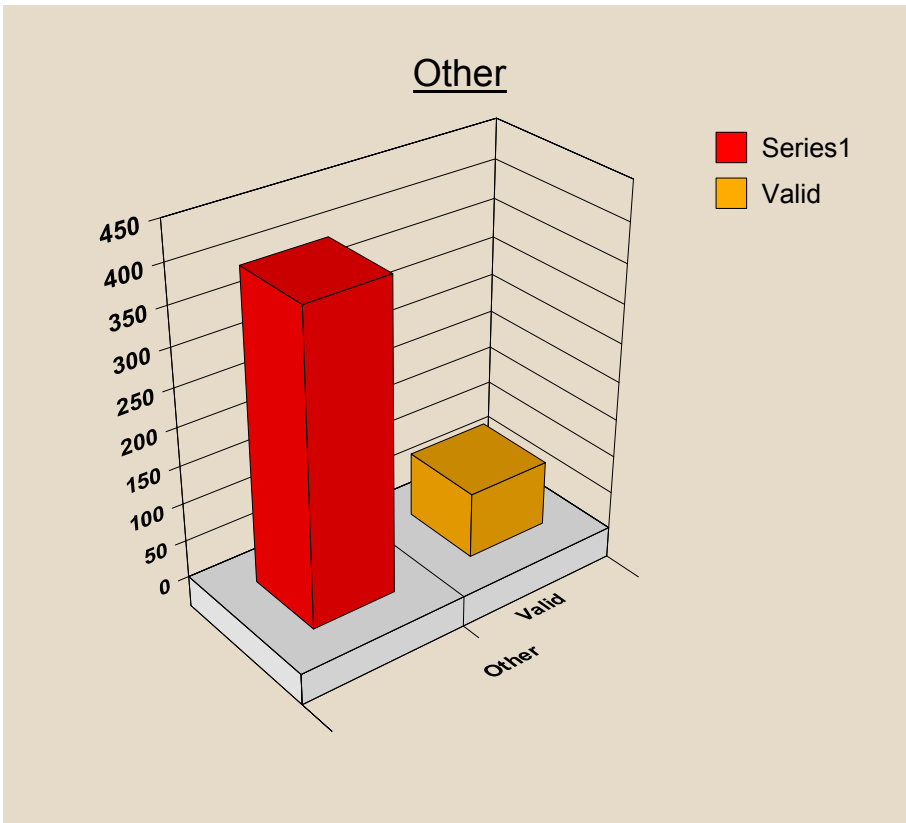
Absolute Respondents		
Base		487
Rate of maximum charge of £227 per week	N/A	79
	Strongly Agree	17
	Agree	70
	Neither	95
	Disagree	115
	Strongly disagree	111

Q.24. Disability related expenditure – Do you think that disability related benefits should be included as income for chargeable purposes?



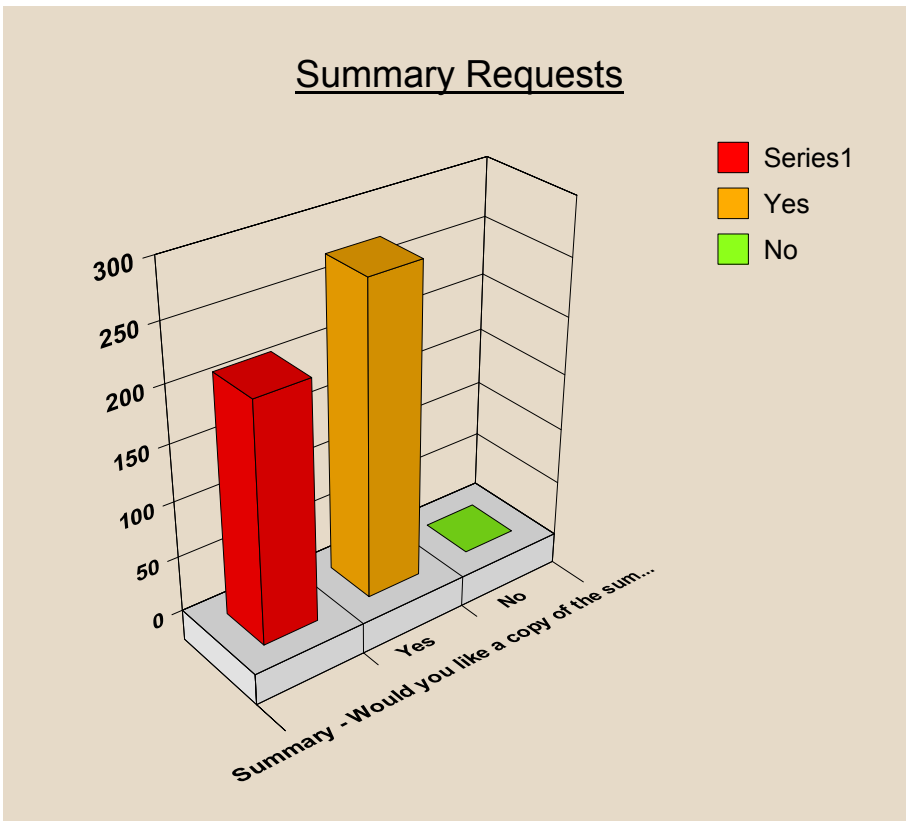
Absolute Respondents		
Base		487
Your view	N/A	41
	Strongly Agree	27
	Agree	76
	Neither	53
	Disagree	113
	Strongly disagree	177

Q.25. How would you describe yourself?



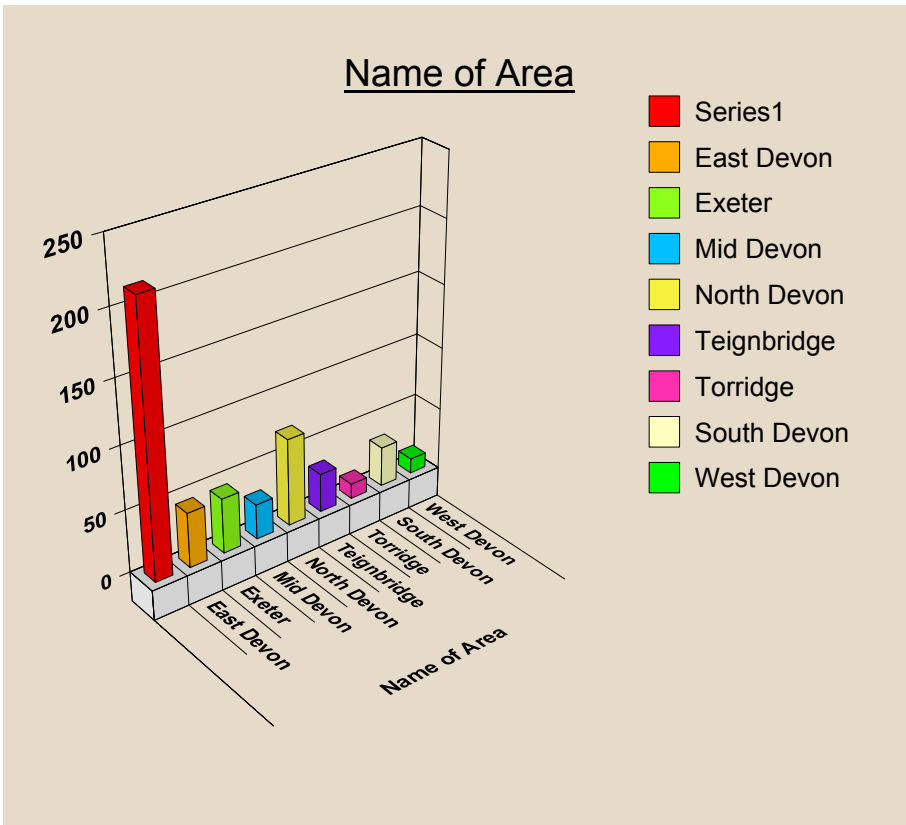
Absolute Respondents		
Base		487
Other		401
	Valid	86

Q.26. Summary – Would you like a copy of the summarised consultation responses?



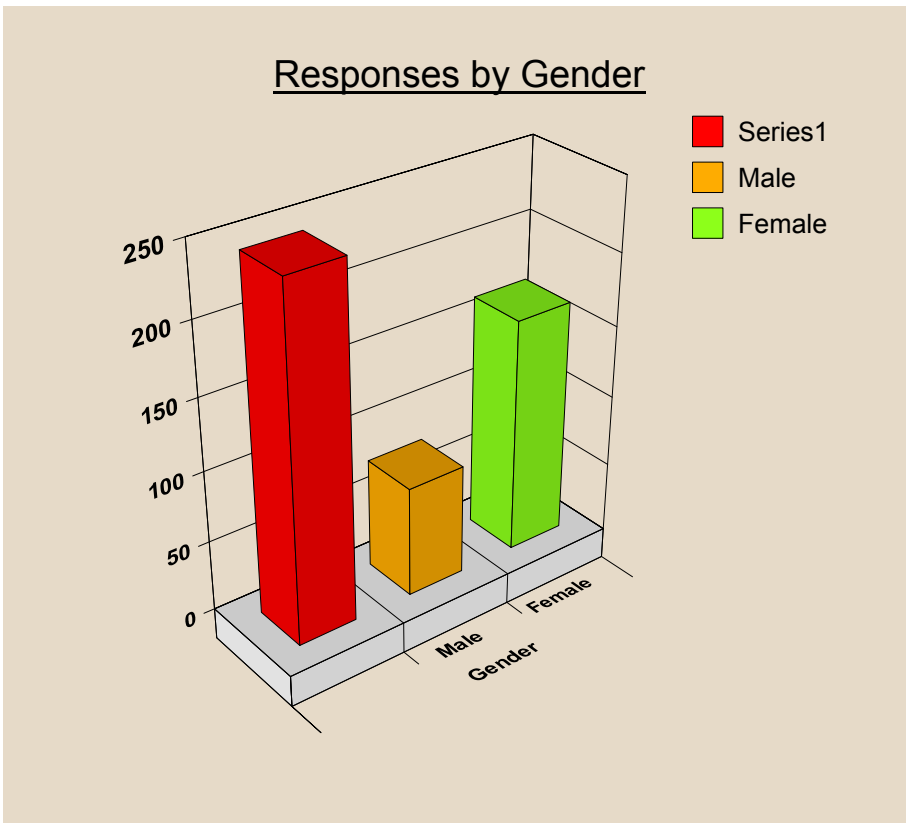
Absolute Respondents		
Base		487
Summary - Would you like a copy of the sum...	N/A	212
	Yes	275
	No	-

Q.28. Response area's



Absolute Respondents		
Base		487
Name of Area	N/A	214
	East Devon	44
	Exeter	44
	Mid Devon	28
	North Devon	70
	Teignbridge	31
	Torridge	12
	South Devon	32
	West Devon	12

Q.28 Responses by gender



Absolute Respondents		
Base		487
Gender	N/A	244
	Male	78
	Female	165