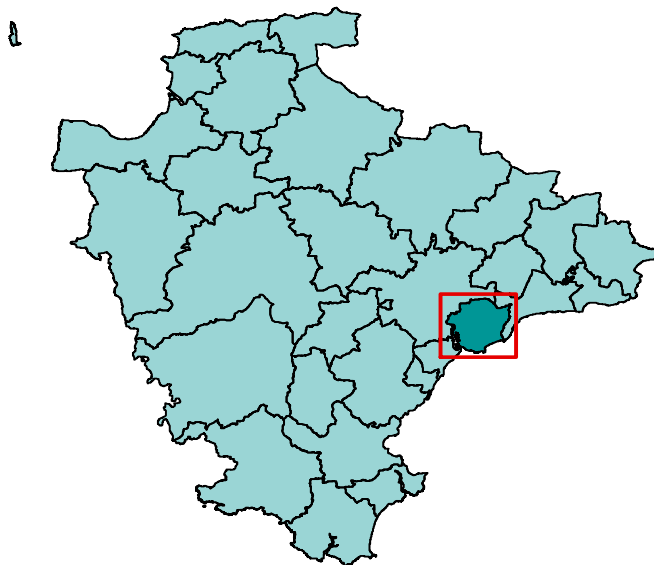


Area definition

This profile, one of 29 covering the area of Devon County Council, has been generated by Strategic Intelligence with the aim of contributing to. It provides a statistical overview, based on a series of facts and figures, of what life is like in the area.

The profile is structured around a series of themes to cover social, economic and environmental well being. It is part of a suite of documents that provide information about the area and the people living there. Further information is available on the Devon County Council website (<http://www.devon.gov.uk/devontownprofiles>).

Each area is built up from parishes with one or more population centres and the remaining rural hinterland. Further information about the creation of the Devon Town geography can be found at the end end of this report.



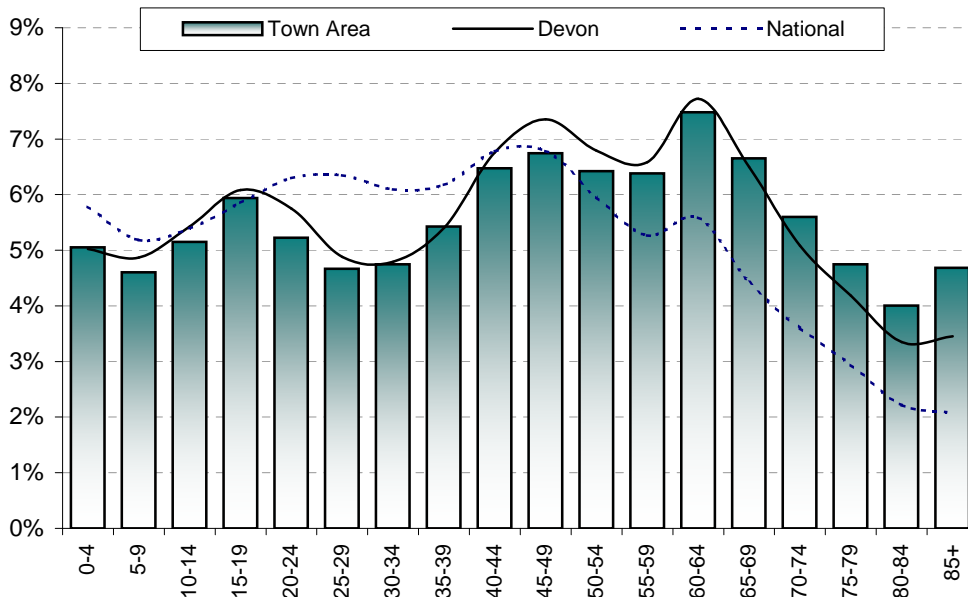
© Crown copyright. All rights reserved. 100019783 2011

The area has one major settlement - Exmouth - and two smaller population centres - Budleigh Salterton and Woodbury. It also includes the following parishes: Bicton, Colaton Raleigh, East Budleigh and Lympstone.

Population

Total population	Exmouth	Budleigh Salterton	Woodbury	Remainder	Town Area	East Devon	Devon	National
2001	32,972	4,232	3,165	4,979	45,348	125,520	704,493	52,360,000
2011	34,432	4,590	5,260	3,497	47,779	132,457	746,399	60,462,600
Change	1,460	358	2,095	-1,482	2,431	6,937	41,906	8,102,600
% change	4.4%	8.5%	66.2%	-29.8%	5.4%	5.5%	5.9%	15.5%

Proportion aged	0-19	20-39	40-59	60-79	80 and over
Exmouth	21.0%	20.7%	26.6%	23.4%	8.2%
Budleigh Salterton	16.6%	12.8%	22.2%	33.0%	15.3%
Woodbury	15.9%	19.4%	15.5%	12.5%	3.3%
Remainder	31.5%	24.1%	40.6%	41.7%	12.4%
Town Area	20.7%	20.1%	26.0%	24.5%	8.7%
East Devon	19.8%	17.1%	26.7%	27.2%	9.3%
Devon	21.4%	20.8%	27.5%	23.5%	6.8%
National	22.2%	24.9%	24.8%	16.6%	4.3%

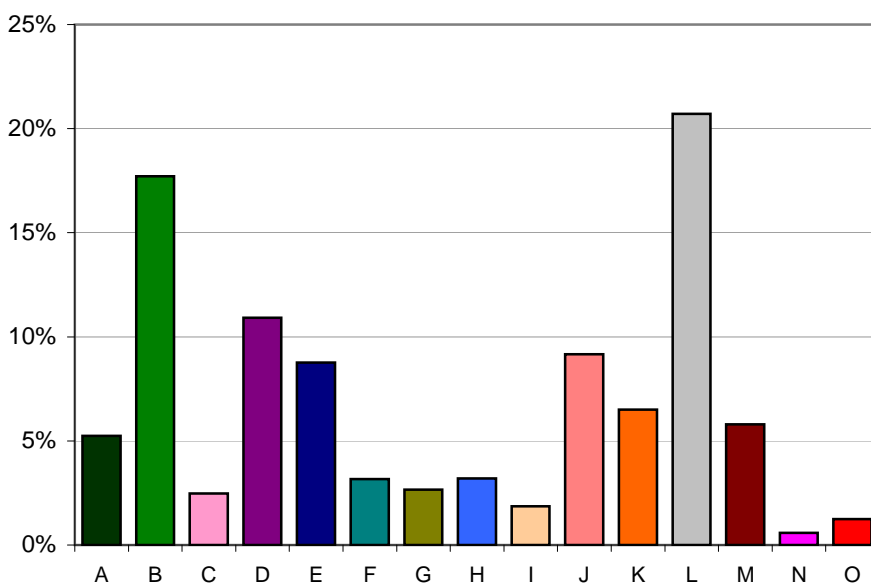


Population attributes

Information about the people that live in the area is taken from Experian's Mosaic data. Mosaic is based on the assumption that people living in an area are likely to be similar; however, it does not provide definitive description of each person.

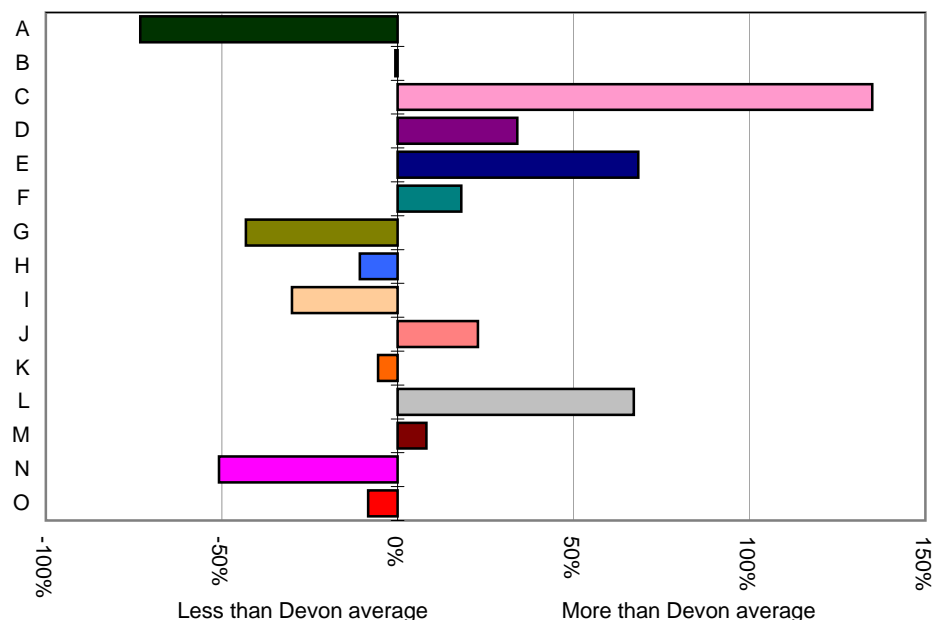
The Mosaic data are broken down in to a number of groups, each one describing a section of the population.

	Households	%	Devon
A -Residents of isolated rural communities	1,161	5.2%	19.5%
B -Residents of small and mid-sized towns with strong local roots	3,922	17.7%	17.8%
C -Wealthy people living in the most sought after neighbourhoods	547	2.5%	1.1%
D -Successful professionals living in suburban or semi-rural homes	2,415	10.9%	8.1%
E -Middle income families living in moderate suburban semis	1,939	8.8%	5.2%
F -Couples with young children in comfortable modern housing	702	3.2%	2.7%
G -Young, well-educated city dwellers	588	2.7%	4.7%
H -Couples and young singles in small modern starter homes	709	3.2%	3.6%
I - Lower income workers in urban terraces in often diverse areas	412	1.9%	2.7%
J -Owner occupiers in older-style housing in ex-industrial areas	2,029	9.2%	7.5%
K -Residents with sufficient incomes in right-to-buy social houses	1,440	6.5%	6.9%
L -Active elderly people living in pleasant retirement locations	4,583	20.7%	12.4%
M -Elderly people reliant on state support	1,284	5.8%	5.4%
N -Young people renting flats in high density social housing	131	0.6%	1.2%
O -Families in low-rise social housing with high levels of benefit	275	1.2%	1.4%



Distribution of households by Mosaic group

Proportion of households compared to Devon average



Deprivation - 2010

The principal source of deprivation data is currently The Indices of Deprivation 2010. This is a Lower Super Output Area (LSOA) level measure of deprivation. There are over 32,000 LSOAs in England, each one containing about 1,500 people. They were developed following the 2001 Census. The index comprises seven domains: income, employment, health & disability, education & training, barriers to housing & services, the living environment and crime. These are combined to give an overall indication of deprivation.

Population living in deprived areas

Population within most deprived 25% of all areas in England	2,362
% population within most deprived 25% of all areas in England	5%
Population within least deprived 25% of all areas in England	15,704
% population within least deprived 25% of all areas in England	33%

Deprivation data are not available for wards but the following tables show which wards contain the most deprived LSOA in the Town Area

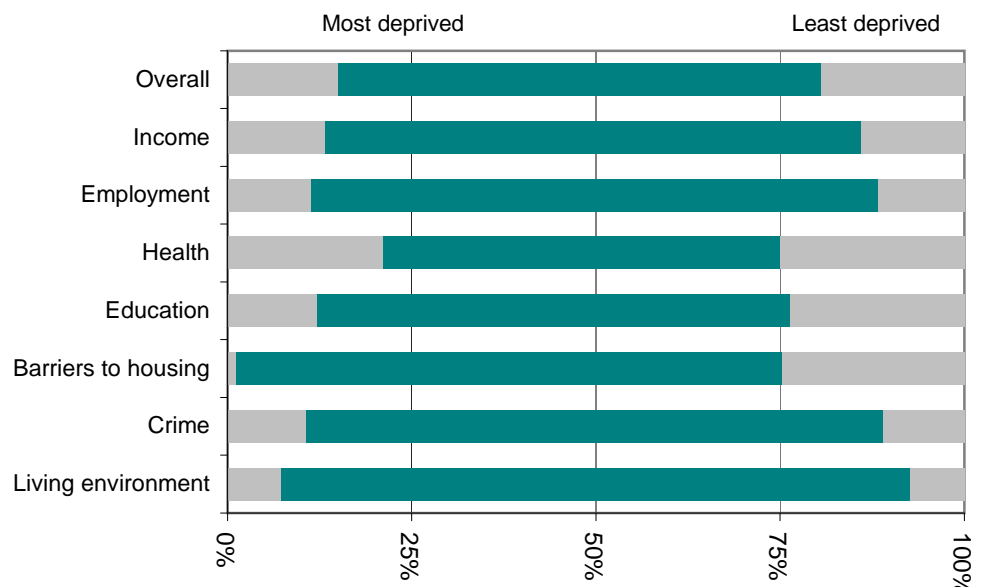
Most deprived areas

Overall	Exmouth Littleham
Income Deprivation	Exmouth Littleham
Employment Deprivation	Exmouth Littleham
Health Deprivation and Disability	Exmouth Town
Education, Skills and Training Deprivation	Exmouth Withycombe Raleigh
Barriers to Housing and Services	Raleigh
Living Environment Deprivation	Exmouth Town
Crime	Exmouth Town

Least deprived areas

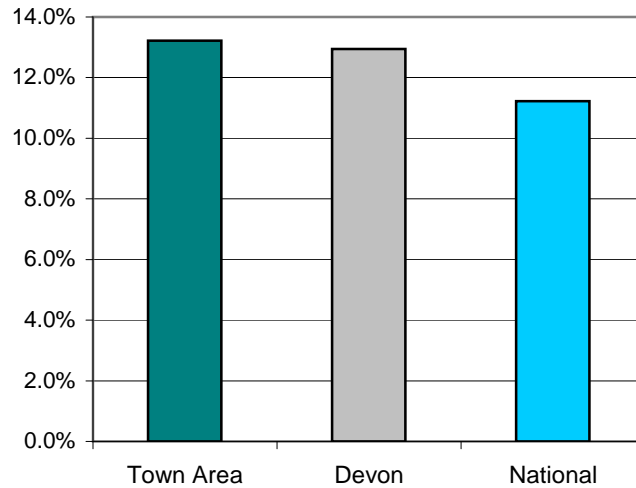
Overall	Woodbury and Lypstone
Income Deprivation	Woodbury and Lypstone
Employment Deprivation	Woodbury and Lypstone
Health Deprivation and Disability	Woodbury and Lypstone
Education, Skills and Training Deprivation	Exmouth Littleham
Barriers to Housing and Services	Exmouth Brixington
Living Environment Deprivation	Exmouth Brixington
Crime	Exmouth Halsdon

This graph shows the range of deprivation in the Exmouth Town Area. The larger the green bar the more variation there is within the area.



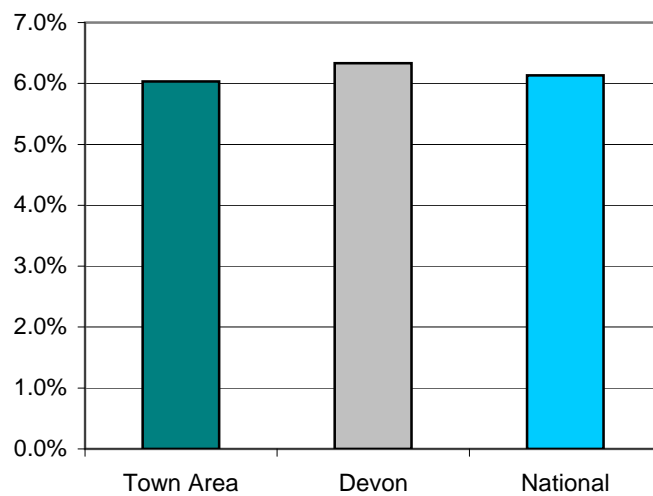
Children Living In Poverty - 2011

	<i>Exmouth</i>	<i>BudleighSalter ton</i>	<i>Woodbury</i>	<i>Remainder</i>	<i>Town Area</i>	<i>East Devon</i>	<i>Devon</i>	<i>National</i>
Percentage of children living in poverty	1.7%	95.1%	6.6%	33.0%	13.2%	13.6%	12.9%	11.2%



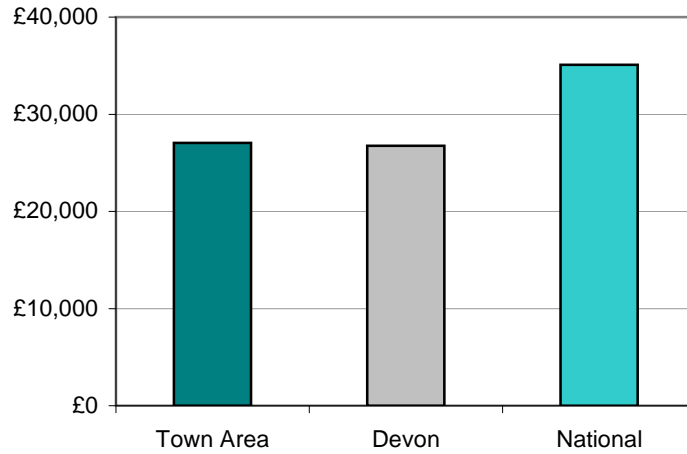
Percentage of Fuel Poverty Households - 2008

	<i>Exmouth</i>	<i>BudleighSalter ton</i>	<i>Woodbury</i>	<i>Remainder</i>	<i>Town Area</i>	<i>East Devon</i>	<i>Devon</i>	<i>National</i>
Percentage of fuel poverty households	5.6%	6.1%	5.8%	6.2%	6.0%	6.0%	6.3%	6.1%



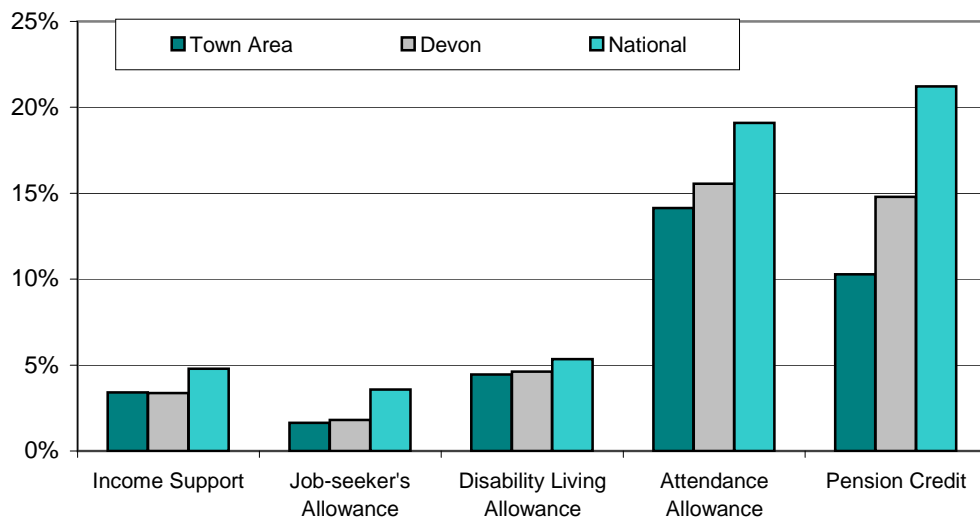
Income - 2008

	<i>Exmouth</i>	<i>Budleigh Salterton</i>	<i>Woodbury</i>	<i>Remainder</i>	<i>Town Area</i>	<i>East Devon</i>	<i>Devon</i>	<i>National</i>
Average income (£)	26,500	26,600	33,800	29,700	27,100	27,000	26,800	35,100



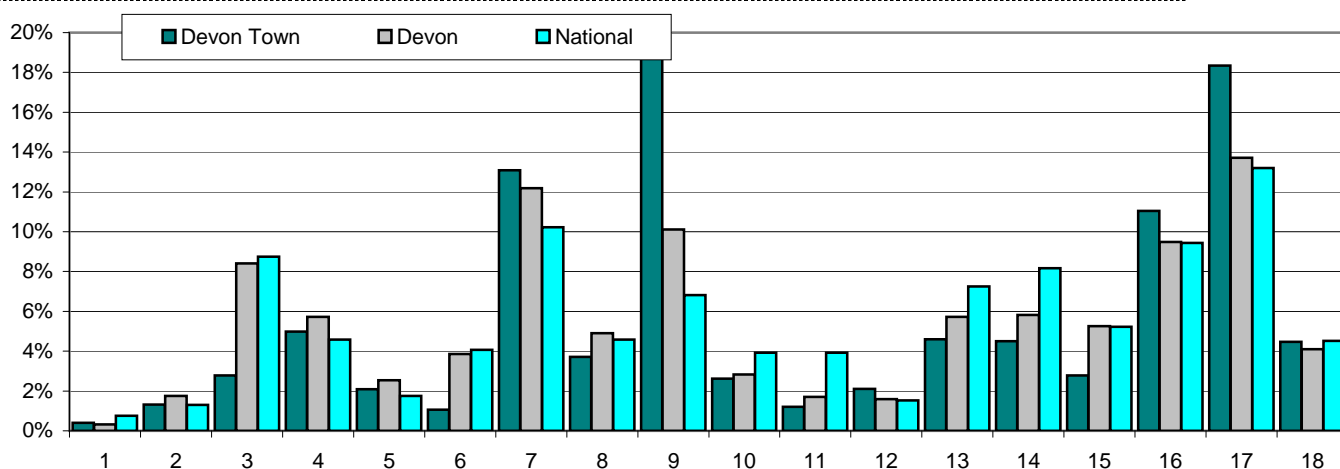
Benefits - 2011

Percent of:	<i>Exmouth</i>	<i>Budleigh Salterton</i>	<i>Woodbury</i>	<i>Remainder</i>	<i>Town Area</i>	<i>East Devon</i>	<i>Devon</i>	<i>National</i>
16-59 year olds claiming Income Support	3.7%	3.0%	1.5%	2.5%	3.4%	2.7%	3.4%	4.8%
16-64 year olds claiming Job Seekers Allowance	1.8%	1.1%	0.6%	1.2%	1.6%	1.5%	1.8%	3.6%
Total population claiming Disability Living Allowance	5.0%	3.1%	1.2%	5.7%	4.5%	3.9%	4.6%	5.3%
65 and older claiming Attendance Allowance	20.7%	16.6%	10.7%	18.5%	14.1%	15.6%	15.6%	19.1%
60 and older claiming Pension Credit	16.0%	9.2%	8.9%	12.3%	10.3%	12.1%	14.8%	21.2%



Employment - 2011

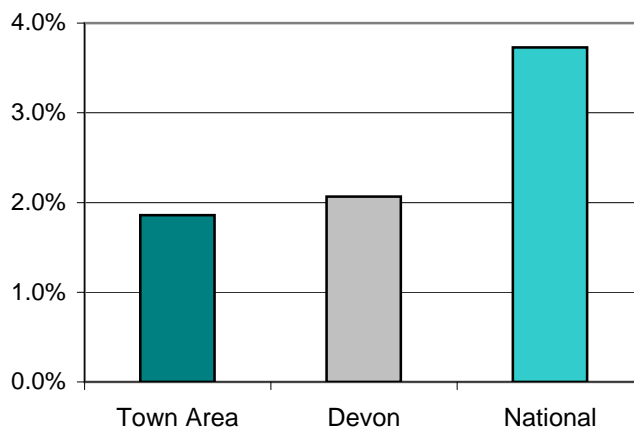
Percent of all employees	Exmouth	Budleigh Salterton	Woodbury	Remainder	Town Area	East Devon	Devon	National
1 Agriculture, forestry & fishing	0.4%	0.0%	1.4%	0.1%	0.4%	0.3%	0.3%	0.8%
2 Mining, quarrying & utilities	0.4%	0.1%	1.1%	5.5%	1.3%	1.0%	1.7%	1.3%
3 Manufacturing	2.8%	1.5%	1.3%	3.7%	2.8%	6.3%	8.4%	8.7%
4 Construction	4.3%	5.0%	2.5%	8.8%	5.0%	7.3%	5.7%	4.6%
5 Motor trades	2.3%	3.5%	0.2%	1.4%	2.1%	2.4%	2.5%	1.8%
6 Wholesale	0.7%	0.1%	0.3%	3.2%	1.1%	3.3%	3.9%	4.1%
7 Retail	15.8%	15.2%	8.7%	3.6%	13.1%	13.6%	12.2%	10.2%
8 Transport & storage (inc postal)	2.7%	1.5%	11.7%	5.2%	3.7%	7.1%	4.9%	4.6%
9 Accommodation & food services	20.0%	6.5%	27.8%	15.5%	18.9%	12.0%	10.1%	6.8%
10 Information & comms	2.7%	0.9%	7.2%	1.2%	2.6%	2.0%	2.8%	3.9%
11 Financial & insurance	1.3%	2.6%	0.7%	0.4%	1.2%	2.3%	1.7%	3.9%
12 Property	2.0%	2.7%	2.1%	2.3%	2.1%	1.4%	1.6%	1.5%
13 Professional, scientific & technical	3.6%	5.2%	11.6%	5.2%	4.6%	4.9%	5.7%	7.3%
14 Business administration & support services	3.3%	8.4%	5.9%	7.2%	4.5%	4.5%	5.8%	8.2%
15 Public administration & defence	2.6%	1.4%	0.2%	5.0%	2.8%	4.2%	5.3%	5.2%
16 Education	9.3%	5.1%	9.3%	20.7%	11.0%	8.5%	9.5%	9.4%
17 Health	21.2%	30.3%	6.0%	8.3%	18.3%	13.8%	13.7%	13.2%
18 Arts, entertainment, recreation & other services	4.6%	9.9%	2.0%	2.9%	4.5%	5.1%	4.1%	4.5%



Note: This table does not include self-employed businesses which can result in low figures especially in the Agriculture, Forestry & Fishing classification.

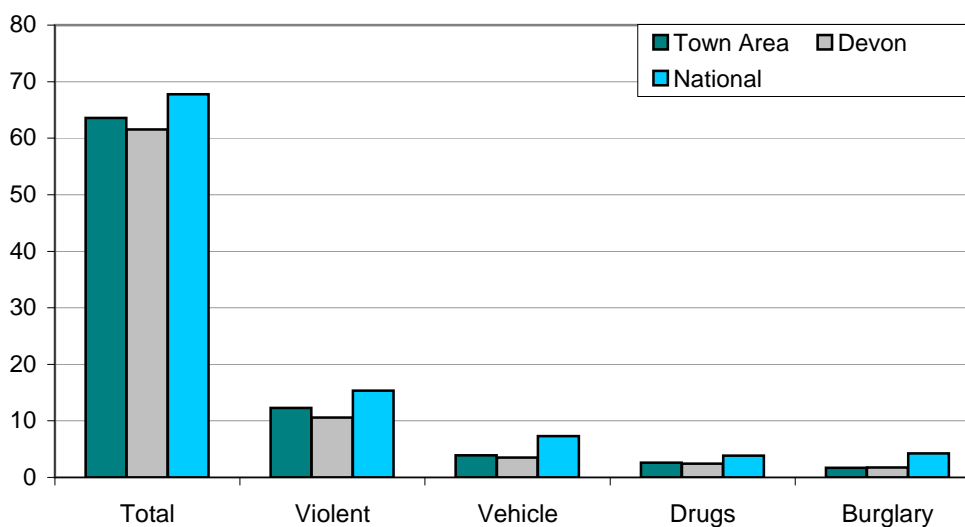
Unemployment - 2011

	<i>Exmouth</i>	<i>Budleigh Salterton</i>	<i>Woodbury</i>	<i>Remainder</i>	<i>Town Area</i>	<i>East Devon</i>	<i>Devon</i>	<i>National</i>
Number unemployed	452	31	11	28	522	1,267	9,451	1,461,644
% of working age population	2.2%	1.4%	0.4%	1.1%	2.0%	1.8%	2.2%	4.0%



Crime - April 2010 - March 2011

Crimes per 1,000 population	<i>Exmouth</i>	<i>Budleigh Salterton</i>	<i>Woodbury</i>	<i>Remainder</i>	<i>Town Area</i>	<i>East Devon</i>	<i>Devon</i>	<i>National</i>
Total crime	77.1	29.6	21.5	38.6	63.6	50.5	61.5	67.8
Violent crime	15.6	4.6	3.0	4.0	12.3	8.5	10.6	15.4
Vehicle crime	4.2	1.7	3.0	5.4	3.9	3.0	3.5	7.3
Drug offences	3.3	1.1	0.8	0.6	2.6	1.8	2.4	3.8
House burglary	1.7	2.2	1.3	1.7	1.7	1.4	1.7	4.2



Note: Vehicle Crime Includes: Interfering with a motor vehicle

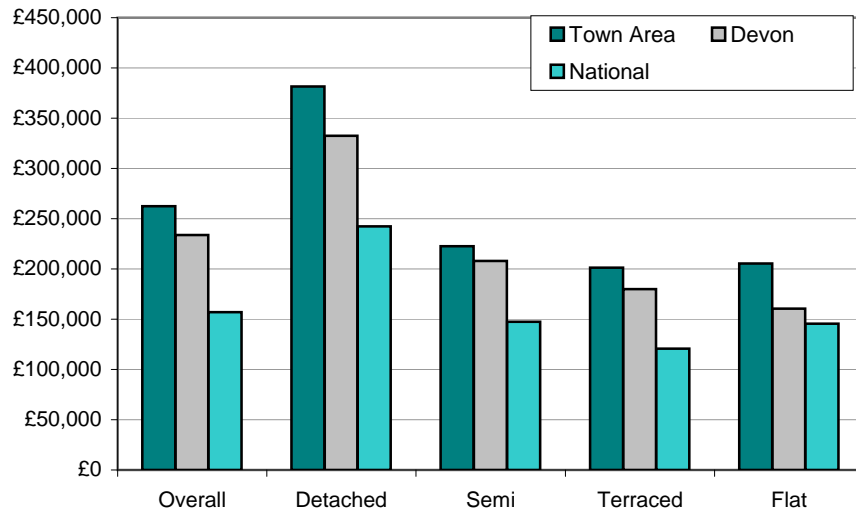
Collisions

The following data cover collisions that led to injury/injuries, and only includes incidents that were reported to/recorded by the Police.

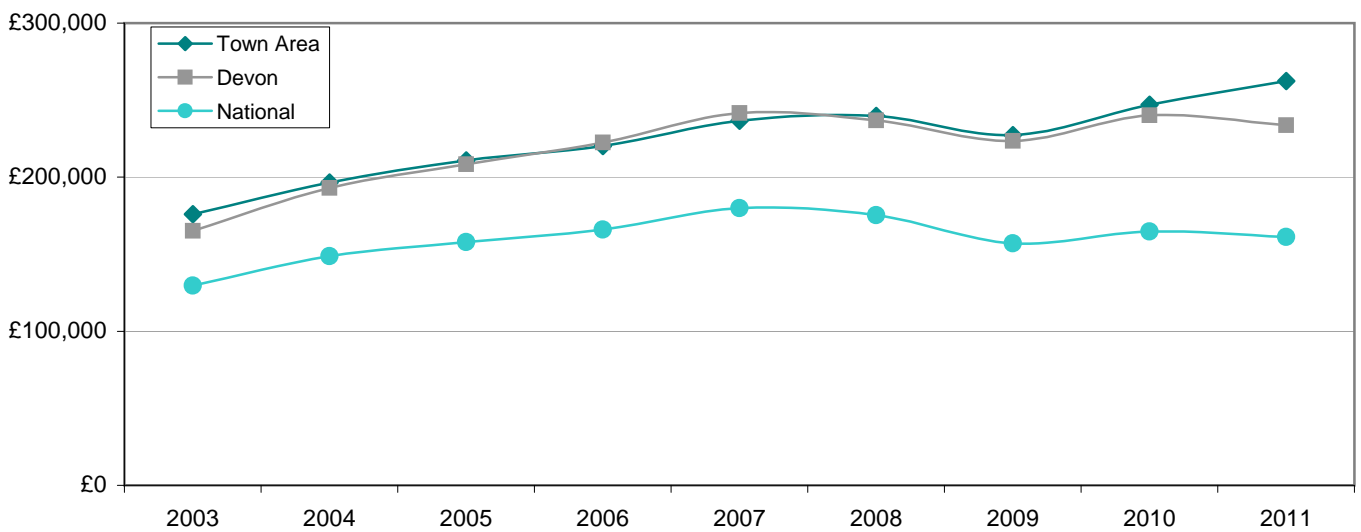
	<i>Exmouth</i>	<i>Budleigh Salterton</i>	<i>Woodbury</i>	<i>Remainder</i>	<i>Town Area</i>	<i>East Devon</i>	<i>Devon</i>	<i>National</i>
2009								
Collisions	47	5	14	17	83	354	2,026	163,554
Fatalities	0	0	0	0	0	2	30	2,222
Serious injuries	3	2	1	1	7	31	158	24,690
Slight injuries	62	3	23	21	109	484	2,606	195,234
2010								
Collisions	57	1	16	13	87	283	1,796	154,414
Fatalities	0	0	0	0	0	7	28	1,850
Serious injuries	5	0	2	3	10	44	263	24,510
Slight injuries	68	2	20	16	106	348	2,270	184,138
2011								
Collisions	50	3	24	20	97	333	1,860	151,474
Fatalities	0	0	0	0	0	2	18	1,901
Serious injuries	6	0	4	3	13	38	216	25,023
Slight injuries	54	4	26	28	112	451	2,386	178,927

House prices - 2011

Average prices (£)	Exmouth	Budleigh Salterton	Woodbury	Remainder	Town Area	East Devon	Devon	National
Overall	225,912	354,768	382,184	363,361	262,351	262,447	233,819	161,281
Detached	293,132	599,560	508,643	510,871	381,562	364,956	332,431	255,169
Semi-detached	205,403	279,667	292,373	243,582	222,515	218,065	208,055	152,839
Terraced	195,424	233,497	183,704	232,484	201,381	189,352	179,796	122,617
Flat/Maisonette	202,642	219,219	211,000		205,463	186,946	160,521	150,693



Overall average price (£)	2003	2004	2005	2006	2007	2008	2009	2010	2011
Exmouth	176,042	196,513	210,858	220,243	236,685	239,723	227,334	246,947	262,351
Devon	165,264	193,056	208,323	222,478	241,523	236,770	223,645	240,201	233,819
England & Wales	129,632	148,744	157,880	166,063	179,905	175,434	157,033	164,727	161,281



Place Survey - 2008

The 2008 Place Survey provides information on people's perceptions of their local area and the local services they receive. The survey collects information on 18 national indicators for local government, used to measure local government performance for 152 county councils, metropolitan district councils, London boroughs and unitary authorities.

Further information can be found on the Department for Communities and Local Government's website: www.communities.gov.uk

Figures are the proportion of people responding to the survey who live in the Exmouth Town Area.

What things are most important in making somewhere a good place to live?

54%	Health services
49%	The level of crime
37%	Clean streets
33%	Public transport
32%	Affordable decent housing

What things most need improving in this area?

41%	Activities for teenagers
40%	Road and pavement repairs
35%	Wage levels & local cost of living
32%	Affordable decent housing
27%	Job prospects

People saying they are very satisfied or fairly satisfied with	Town Area	Devon
Their local area as a place to live	91%	89%
Their local council	54%	52%
Their county council	48%	45%

Education - June 2011

Exmouth
Budleigh Salterton
Woodbury
Remainder
Town Area
East Devon
Devon
National

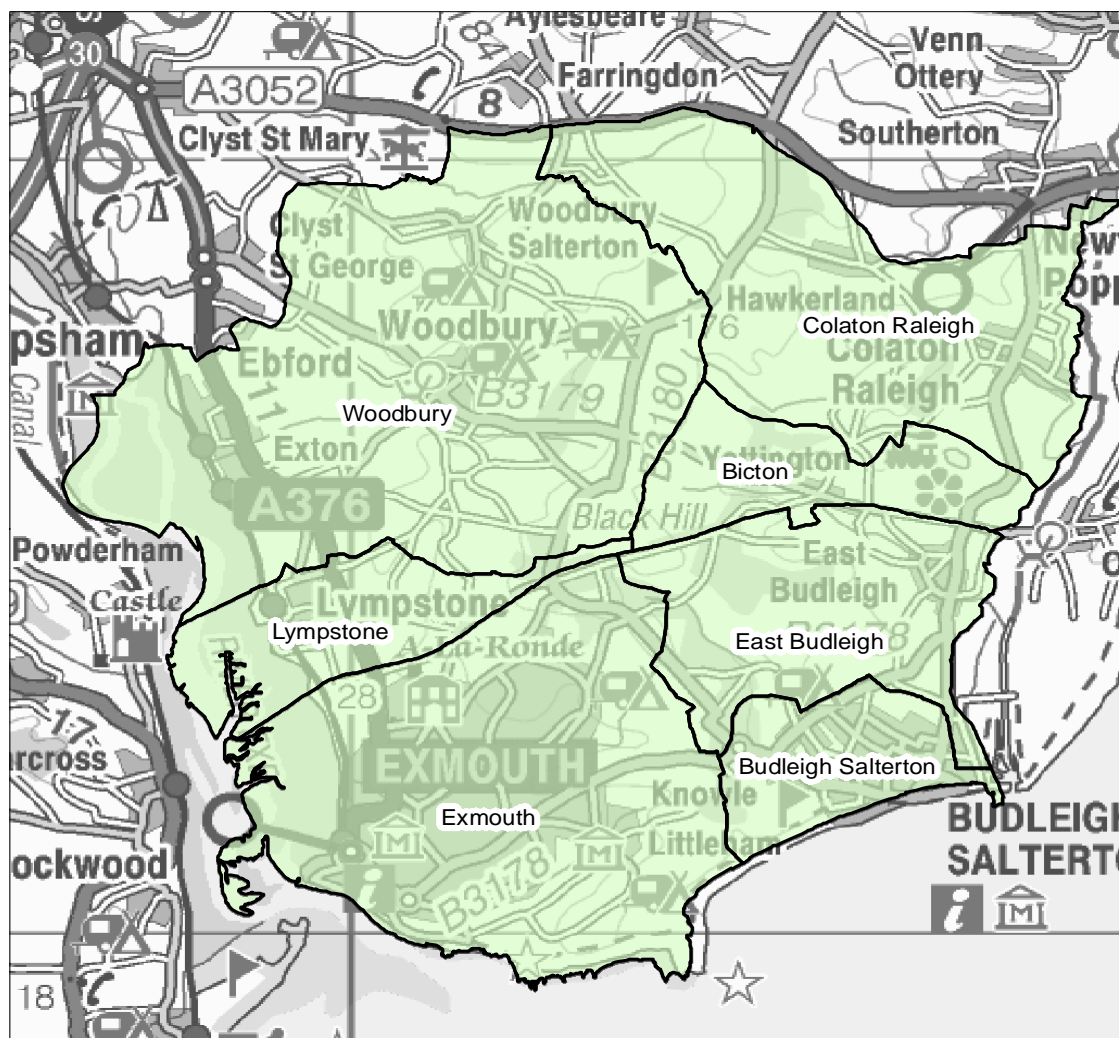
% children achieving Key Stage 2 level 4 or above in

English	78%	96%	95%	94%	82%	86%	85%	81%
Maths	73%	84%	95%	94%	77%	85%	84%	82%
Science	78%	96%	95%	94%	100%	88%	87%	85%

% children achieving 5 or more GCSEs at grades

A*-C	72%	100%	77%	85%	70%	75%	74%	80%
A*-C including	59%	93%	61%	81%	59%	64%	58%	59%
A*-G	100%	141%	84%	104%	95%	97%	96%	n/a

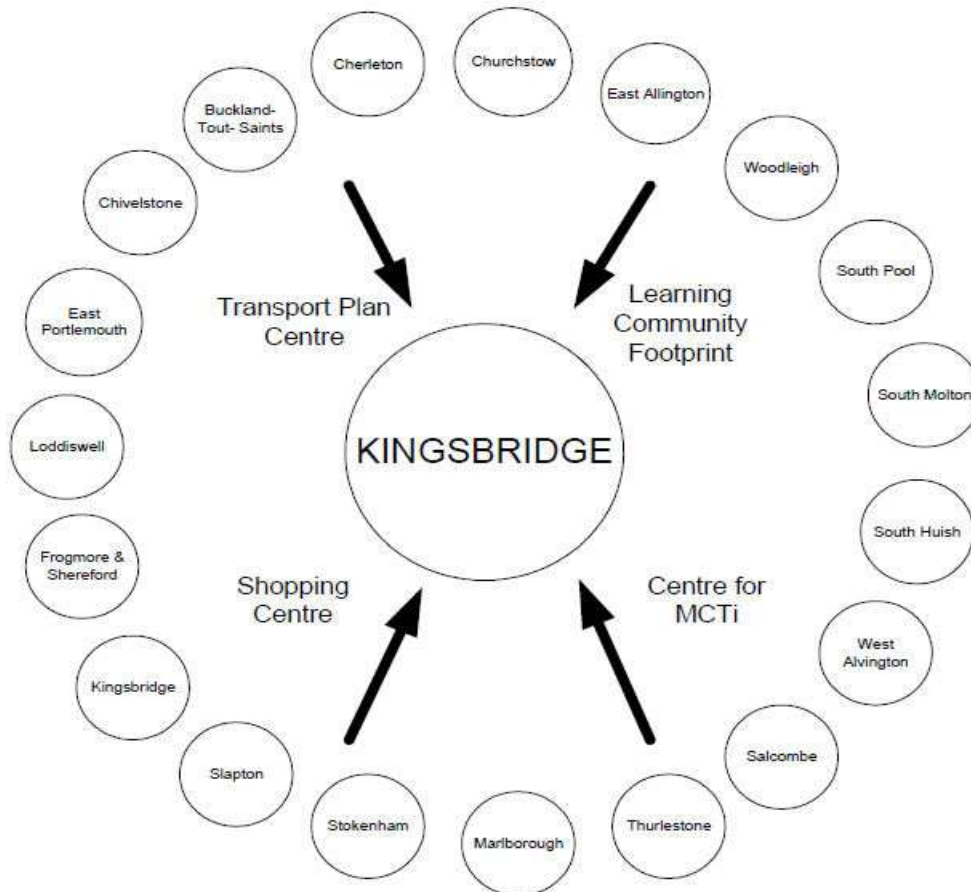
Exmouth area



Identifying Devon Towns

The main factor that decides a town's hinterland is provision of services; the place that the hinterland looks to in order to provide the things it needs to survive. In order to identify the 28 Devon Towns, analysis of the following services and other relevant factors have been taken into account:

- Local Travel Plans – which are based on public consultation and map local travel patterns, the majority of which are short ones in and around local communities as part of people's daily lives.
- Shopping catchment areas – which are the service most frequently accessed by people.
- Learning Community catchment areas – which have a major influence on where people look to for services. Learning Community catchments do not always follow district or even county boundaries, but are based on a collection of feeder primary schools.
- Market and Coastal Towns Initiative areas - The Market and Coastal Towns Initiative was started after recognition that the health of a market town is vital to the well being of its hinterland, and that many of Devon's market towns were in need of regeneration. It was a Central Government initiative, administered by the RDAs. Over half of Devon was included in the Market and Coastal Towns Initiative.
- Parishes - The boundary definitions are shown in terms of parishes, as they are traditionally the smallest area used for 'clustering'. The diagram below is an illustration of how this works for one Devon Town: Kingsbridge.



Exeter also provides a similar or related "market town" function as well as being a sub regional centre with a larger sphere of influence.

Further information and sources

Population : 2001 - Census © Crown copyright
2011 - Census (2011)

Population attributes : Mosaic Public Sector 2010 © Experian

Deprivation : Indices of Deprivation 2010
Department for Communities and Local Government
© Crown copyright
<http://www.communities.gov.uk/indices>

Children Living in Poverty : Child Poverty Unit 2011
<http://endchildpoverty.org.uk/>

Fuel Poverty Households : Fuel Poverty Indicator 2008
<http://www.fuelpovertyindicator.org.uk/>

Income : Estimates based on Experian's Mosaic Household dataset 2008
© Experian

Benefits : May 2011 - Department for Work and Pensions
© Crown copyright
<http://research.dwp.gov.uk/asd/tabtool.asp>

Employment : Business Register and Employment Survey/Annual Business Inquiry 2011
Office for National Statistics © Crown copy 0
<http://www.nomisweb.co.uk>

Unemployment : April 2011 - Office for National Statistics
© Crown copyright
<http://www.nomisweb.co.uk>

Crime : April 2010 - March 2011
Devon and Cornwall Constabulary

Education : June 2011 - Children and Young People's Directorate
Devon County Council
Local figures relate to children living in an area and attending a Devon County Council

House prices : Land Registry 2011
© Crown copyright
National figures relates to England and Wales. Overall national house price is weighted by number of sales in each month. National house prices by type are simple averages of monthly averages - this figure may be skewed if there were a large number of sales in a particular

Place Survey : Department for Communities and Local Government 2008
© Crown copyright
<http://www.communities.gov.uk/publications/localgovernment/newplacesurvey>