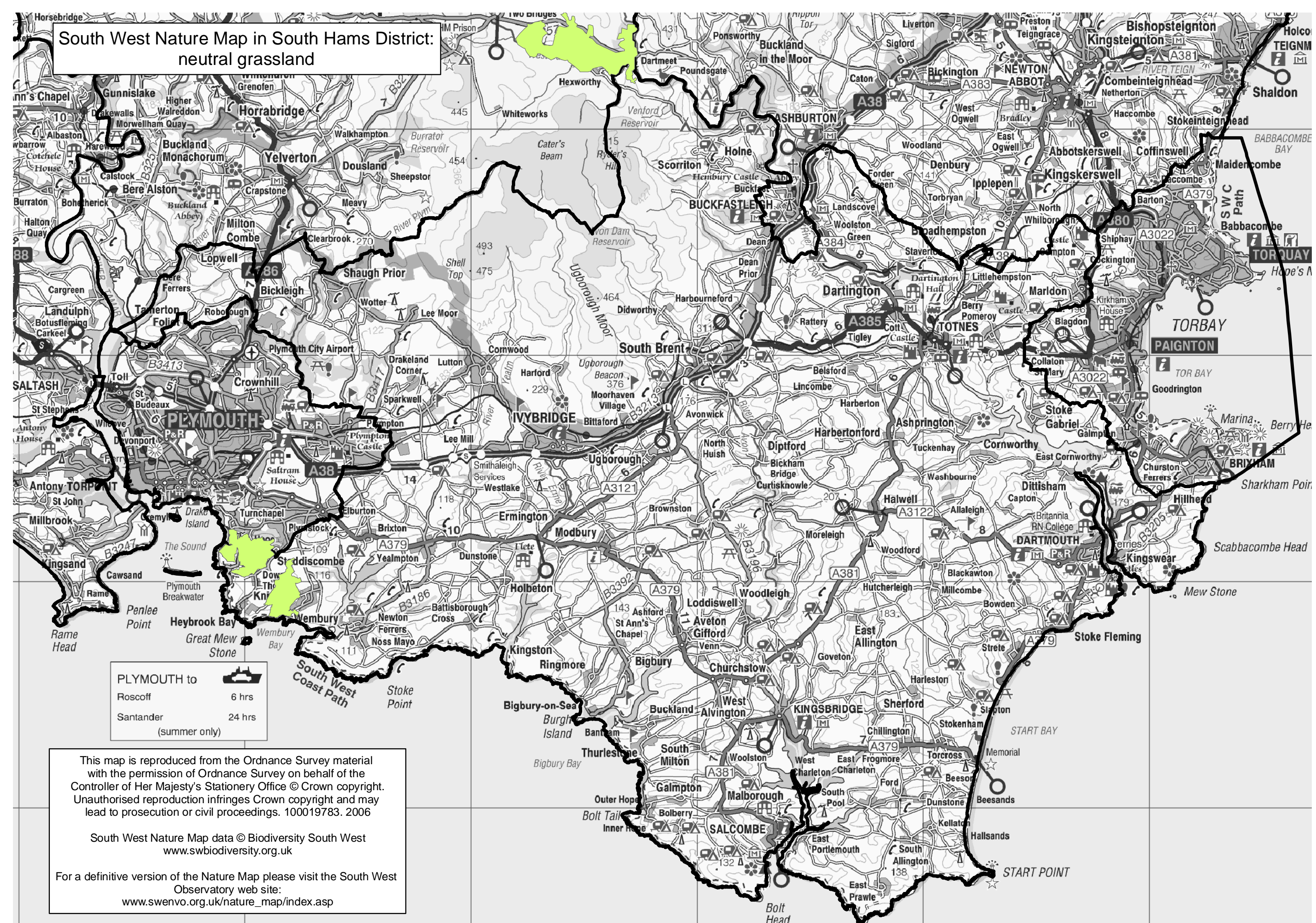


South West Nature Map in South Hams District:
neutral grassland



PLYMOUTH to	
Roscoff	6 hrs
Santander	24 hrs
(summer only)	

This map is reproduced from the Ordnance Survey material with the permission of Ordnance Survey on behalf of the Controller of Her Majesty's Stationery Office © Crown copyright. Unauthorised reproduction infringes Crown copyright and may lead to prosecution or civil proceedings. 100019783. 2006

South West Nature Map data © Biodiversity South West
www.swbiodiversity.org.uk

For a definitive version of the Nature Map please visit the South West Observatory web site:
www.swenvo.org.uk/nature_map/index.asp