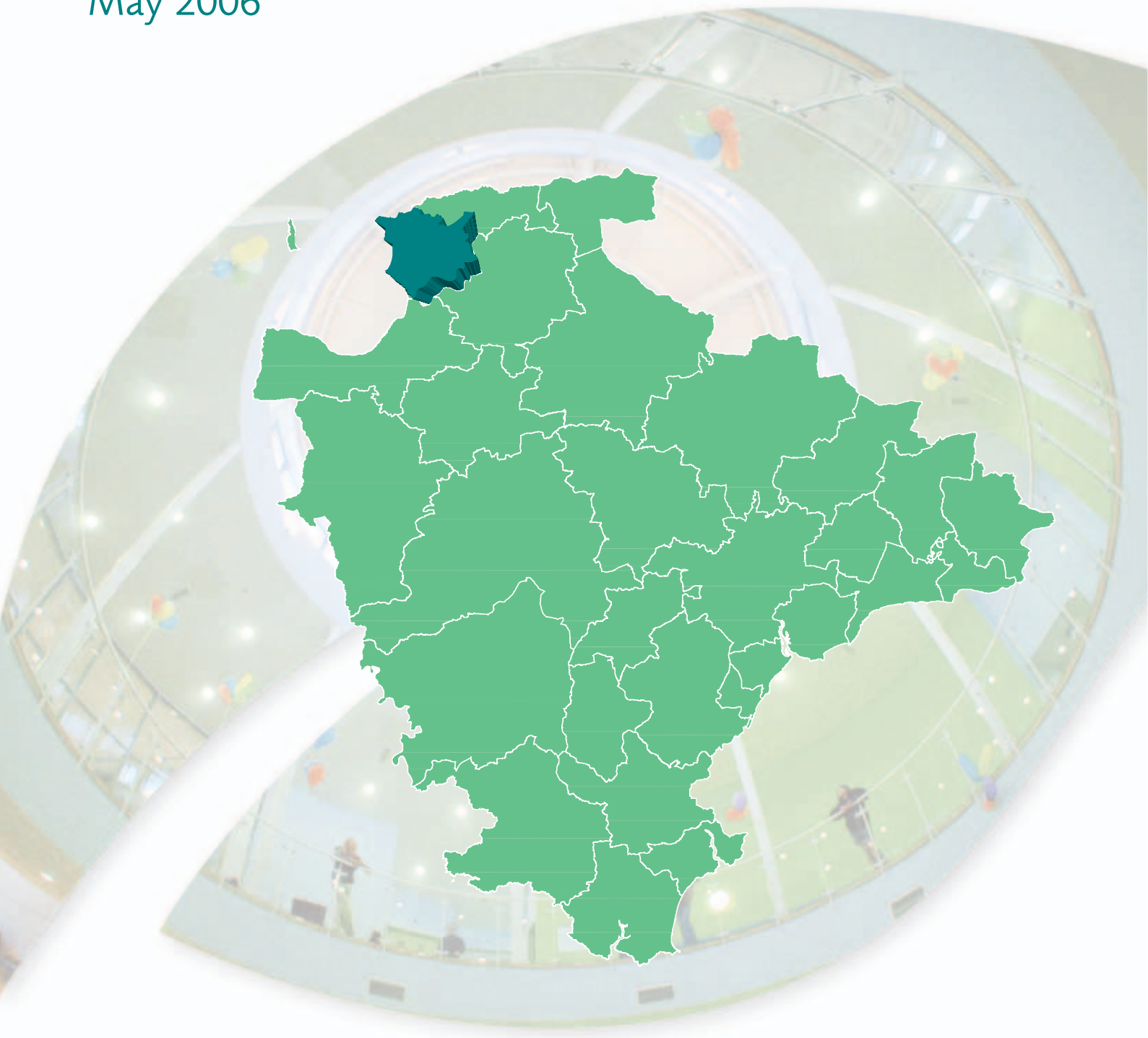


Braunton

Devon Town Baseline Profile

May 2006



Foreword

In Devon, we want a county for everyone.

We want all to share in our economic prosperity, to have access to the best possible public services and to enjoy a good quality of life.

Our county is made up of many small and scattered communities built around larger market and coastal towns and the vibrant city of Exeter.

To make sure that the County Council and other agencies provide a good service to all these diverse communities and can meet their future needs, we need to fully understand and take into account the local situation and any local issues.

We call this initiative “Connecting with Communities” and it is a key part of our Strategic Plan for the future of Devon.

To help, we have produced a local profile of each of the key market and coastal towns in Devon and their surrounding area.

Based on key facts and figures, these profiles are just a starting point for local discussion about the real needs and priorities of each of our communities.

I hope you find this information useful and that it proves an invaluable resource in all future local planning.

Councillor Des Hannon
Executive Support Member for Improvement and Customer Service
Devon County Council



Introduction

This profile, one of 29 covering the area of Devon County Council, has been generated by the County Council's Corporate Information Service and is an important resource contribution to local community planning work.

Each profile provides a statistical overview, based on a series of facts and figures, of what life is like in each "Devon town" area. The profile contains a baseline of information and is intended to provide the basis for further discussion and development within the County Council and with partners.

In light of these discussions the profile can grow into a more rounded picture describing "how things are" for each area, as well as to set out the likely future actions that will be needed to redress any gaps in service or unmet needs.

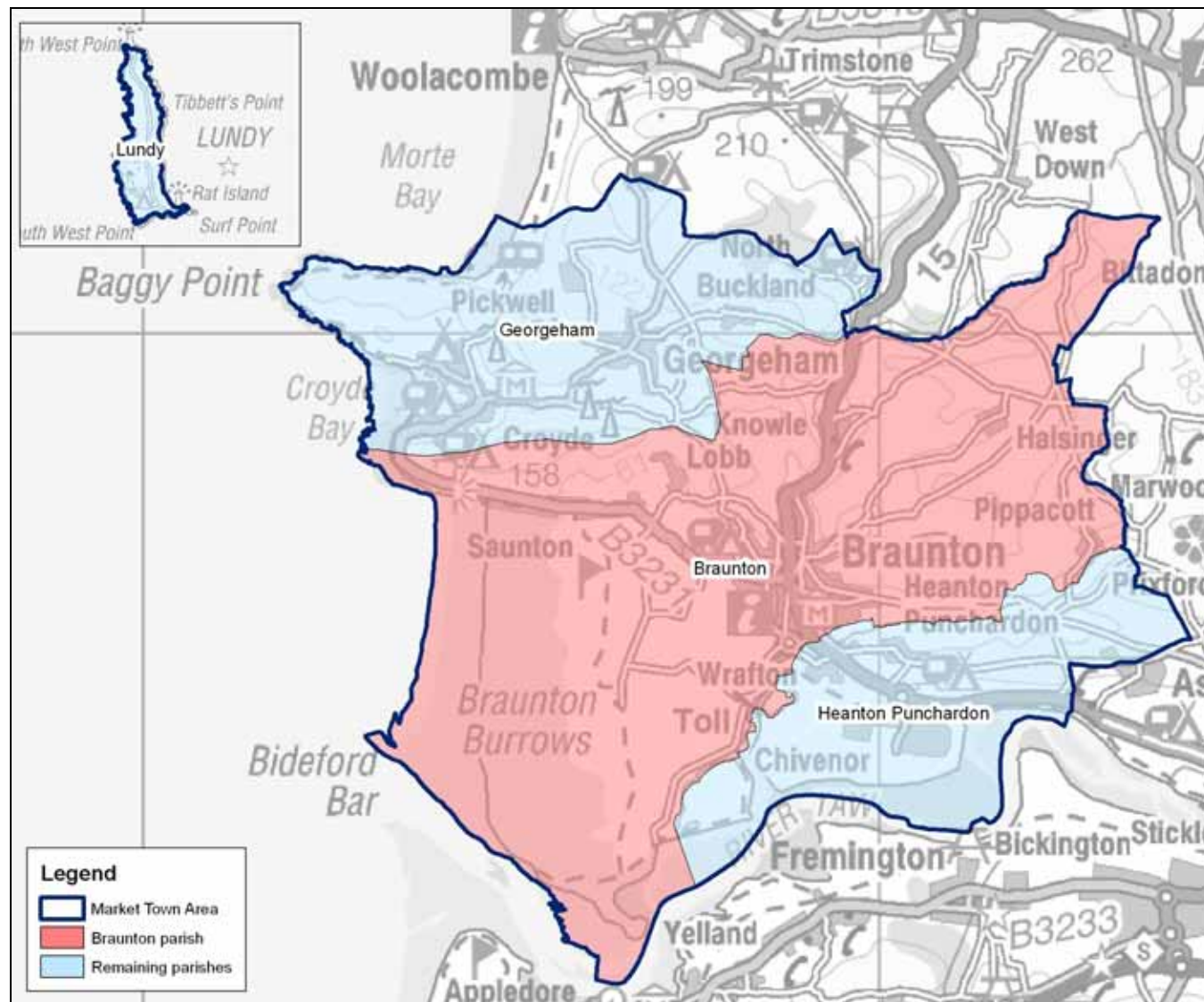
The profile is structured around a series of themes to cover social, economic and environmental well being. This is a starting point in producing profiles about our "Devon town" areas in which considerable effort has been made to provide a comprehensive series of data. Further data will be added to subsequent editions as they become available to provide a more complete picture and monitor trends.

The profiles are available on the County Council website – www.devon.gov.uk

Area definition

Market town areas have been defined as aggregations of parishes. The following 3 parishes make up the Braunton market town area:

Braunton Georgeham Heanton Punchardon



Crown Copyright. All rights reserved. Devon County Council. 100019783 2006

As much of the data included in this profile is produced at a ward level a 'best-fit' of wards is also used. Wards are included in one market town area if more than 60% of the population of that ward live within the market town boundary. If between 40% and 60% of a ward's population falls within a market town area it will be included but may also be included in another area.

The wards that comprise the market town area in this profile are as follows:

Braunton East Braunton West Georgeham & Morteheoe Heanton Punchardon

The two Braunton wards fall completely inside the market town boundary. Over 80% of the population of Heanton Punchardon ward and 40% of the population of Georgeham & Morteheoe ward live inside the boundary and as such these wards are included in the 'best-fit' for the purposes of this profile. Georgeham & Morteheoe ward is also included in the Ilfracombe market town area.

Each market town area is comprised of a centre (coloured red) and its surrounding hinterland (referred to as the "Remaining parishes" throughout this document). The centre for this profile is considered to be the parish of Braunton, or the two Braunton wards – Braunton East and Braunton West – if appropriate.

Some national datasets are released using a new geographic hierarchy – Super Output Areas. The lowest level – Lower Super Output Areas (or LSOAs) – is about one third the size of a ward. These are aggregated to form Middle Super Output Areas (MSOAs). Where data are only available at Super Output area a best-fit approach has been adopted. There are eight LSOAs that fall either fully or partially inside the market town area and two MSOAs. Five LSOAs forms an area the same as Braunton parish with the remaining three being used as a best fit for the remaining area. Due to their large size it is not possible to produce a figure for Braunton parish using the MSOAs.

Additional information has been included to provide some comparisons. All tables have data for the North Devon district and the area administered by Devon County Council – where reference is made to the county of Devon this refers to the area covered by Devon County Council, which does not include Plymouth or Torbay. Where possible data are also included at a national level, either for England or England & Wales.

Contents

Population	6
Percentage of population by age band (2004).....	6
Population change (1991 to 2004).....	6
Ethnicity (2001)	7
Household composition (2001)	7
Deprivation	8
Comparison of IMD 2000 and ID 2004	8
Map of Index of Deprivation 2004	9
The Local Economy	10
Unemployment as a proportion of working age resident population (April 2005).....	10
Economic activity (2001).....	11
Income Support and Job Seekers Allowance claim rates (2004).....	11
Employment of people living in the area by industry (2001).....	13
Percentage of businesses in profile area by Standard Industrial Classification (2004).....	14
Skills and Learning	15
Number and percentage of pupils achieving at least Key Stage 2 Level 4 (2004).....	15
GCSE attainment (2002/03).....	15
Highest level of qualification (2001)	15
Health, Care and Wellbeing.....	17
Incapacity Benefit & Severe Disablement Allowance and Disability Living Allowance claim rates (2004).....	17
Percentage of people living with a limiting long-term illness (2001)	18
General health (2001)	18
Older People	19
Percentage of lone pensioner households (2001)	19
Number of Social Services clients per 1,000 population (2004).....	19
Children and Young People.....	20
Children in need aged 0 to 17 years per 1,000 population aged 0 to 17 years (2003/04)	20
Young offenders aged 10 to 17 years per 1,000 population aged 10 to 17 years (2000 to 2002)	20
Community Safety	21
Total crime per 1,000 population (2004/05).....	21
Vehicle crime per 1,000 population (2004/05)	22
Violent crime per 1,000 population (2004/05).....	22
Drug offences per 1,000 population (2004/05)	23
Dwelling burglaries per 1,000 population (2004/05)	23
Housing.....	24
House price change (2001 to 2005).....	24
Average house price (2004).....	24
Percentage of dwellings by tenure (2001)	25
Transport.....	26
Car ownership (2001).....	26
Mode of travel to work (2001)	26
Accessibility by public transport (2005).....	27
The Environment – Landscape.....	28
Landscape character.....	28
Landscape Character Zones within the market town area.	29
The Environment – Wildlife and Geology	30
Key sites.....	30
Key sites within the market town area	31

This profile makes use of data from the 1991 and 2001 Censuses. All such data is acknowledged as Crown Copyright.

Population

Summary

The structure of the population in the market town area is broadly similar to that across the district and the county. However, there is a higher proportion of the younger age groups (0 to 9) in the rural areas and a higher proportion of the older age groups (aged 45 and over) in the urban centre.

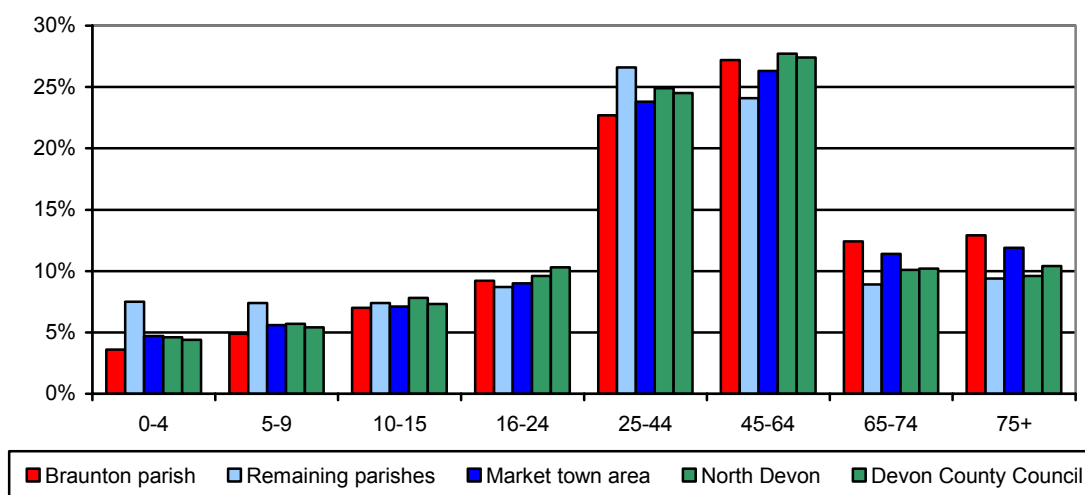
The population of the market town area has risen by around 4% since 1991. The population of the rural parishes has fallen by 7.3%, primarily due to a reduction of 600 people in Heanton Punchardon – possibly due to changes at Chivenor.

The proportion of people from minority ethnic groups in the market town area as a whole is similar to the district and county averages. Rates are slightly higher in the rural parishes than the urban centre.

The level of households occupied by individuals in the market town area is similar to the district average and slightly below the levels for the county and nationally. Rates of single person occupancy are higher in Braunton than in the remaining parishes.

Percentage of population by age band (2004)

Area	Total population	Age band							
		0-4	5-9	10-15	16-24	25-44	45-64	65-74	75 and over
Braunton parish	8,286	3.6%	4.9%	7.0%	9.2%	22.7%	27.2%	12.4%	12.9%
Remaining parishes	3,265	7.5%	7.4%	7.4%	8.7%	26.6%	24.1%	8.9%	9.4%
Market town area	11,551	4.7%	5.6%	7.1%	9.0%	23.8%	26.3%	11.4%	11.9%
North Devon	95,121	4.6%	5.7%	7.8%	9.6%	24.9%	27.7%	10.1%	9.6%
Devon County Council	742,911	4.4%	5.4%	7.3%	10.3%	24.5%	27.4%	10.2%	10.4%



Source: South Devon Health Informatics Service (FHSA data)

Population change (1991 to 2004)

Area	1991	2001	2004	% change 1991-2004
Braunton parish	7,558	7,503	8,286	9.6%
Remaining parishes	3,522	3,319	3,265	-7.3%
Market town area	11,080	10,822	11,551	4.3%
North Devon	84,800	87,508	95,121	12.1%
Devon County Council	646,903	704,493	742,911	14.8%

Source: 1991 & 2001 Census, 2004 South Devon Health Informatics Service (FHSA data)

Note: The figure for Heanton Punchardon, part of the remaining parishes, for 1991 has been reduced by the number of people resident in defence establishments to more closely reflect the 2001 and 2004 data – a reduction of 225. It is unclear what current population of Chivenor Airbase is and therefore these figures should be treated with caution.

Ethnicity (2001)

Area	All people	Ethnic Group			
		White	% White	Black or Minority Ethnic	% Black or Minority Ethnic
Braunton parish	7,503	7,451	99.3%	52	0.7%
Remaining parishes	3,303	3,261	98.7%	42	1.3%
Market town area	10,806	10,712	99.1%	94	0.9%
North Devon	87,508	86,674	99.0%	834	1.0%
Devon County Council	704,493	696,590	98.9%	7,903	1.1%
England	49,138,831	44,679,361	90.9%	4,459,470	9.1%

Source: 2001 Census

Household composition (2001)

Area	All households	Single person households		Households comprising more than one person	
		Number	%	Number	%
Braunton parish	3,326	978	29.4%	2,348	70.6%
Remaining parishes	1,265	294	23.2%	971	76.8%
Market town Area	4,591	1,272	27.7%	3,319	72.3%
North Devon	36,777	10,252	27.9%	26,525	72.1%
Devon County Council	298,576	86,890	29.1%	211,686	70.9%
England	20,451,427	6,150,264	30.1%	14,301,163	69.9%

Source: 2001 Census

Deprivation

Summary

No Lower Super Output Areas (LSOAs) within the market town boundary fall in the most deprived 25% of LSOAs nationally. Two fall into the 25% to 50% most deprived group.

The principal source of deprivation data is currently The Indices of Deprivation 2004. This is a Lower Super Output Area (LSOA) level measure of multiple deprivation and is made up of seven domains. A LSOA is an area of about 1,500 people and has been devised to standardise statistical geography across the country. The seven domains are:

- Income deprivation
- Employment deprivation
- Health deprivation and disability
- Education, skills and training deprivation
- Barriers to Housing and Services
- Living environment deprivation
- Crime

There are two supplementary Indices (Income Deprivation Affecting Children and Income Deprivation Affecting Older People).

The model which underpins the index of deprivation 2004 is based on the idea of distinct dimensions of deprivation which can be recognised and measured separately. These are experienced by individuals living in an area. Where possible, the indicators relate to 2001.

The information will help target policies and funding, reinforcing the Government's drive to improve the quality of life in disadvantaged communities'.

There are over 32,000 LSOAs in the 2004 index, replacing the 8,500 wards used to construct the current index of multiple deprivation 2000. The LSOA boundaries were determined nationally with no local input.

The 2004 index was developed from academic research undertaken by Oxford University.

The table below compares the areas in Devon ranked in the most deprived 25% nationally, in terms of the number of wards in 2000 and the number of LSOAs in 2004, together with the population of these areas.

Comparison of IMD 2000 and ID 2004

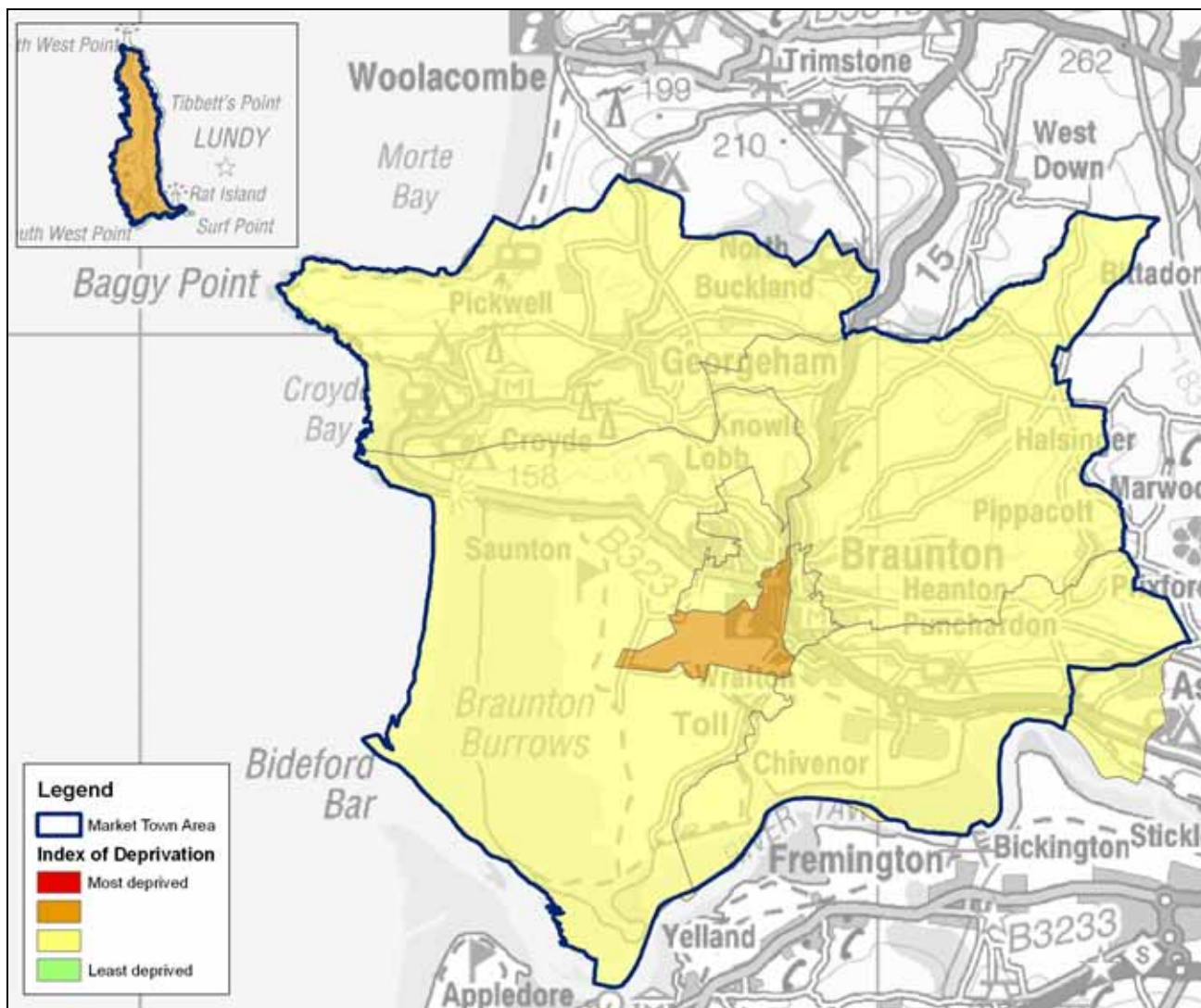
Area	IMD 2000		ID 2004	
	Number of wards	Population	Number of LSOAs	Population
East Devon	1	3,901	0	0
Exeter	3	17,070	14	22,057
Mid Devon	0	0	1	1,652
North Devon	6	21,409	10	14,158
South Hams	1	5,458	0	0
Teignbridge	6	24,408	6	8,918
Torridge	10	22,217	3	5,731
West Devon	1	1,483	0	0
Devon County Council	28	95,946	34	52,516

Source: Office of the Deputy Prime Minister and South Devon Health Informatics Service (FHSA data)

Application of the new index reduces the population in Devon perceived to be living in the most deprived areas by around 45%. This is probably due to the addition of crime and the living environment to the index, which in both cases the area covered by Devon County Council would have scored well compared to the national average. The reduced weighting given to the access to services domain may also be a contributing factor.

There are eight LSOAs that fall either completely or partially within the area covered by this profile. None of these are classified as being in the most deprived 25% of LSOAs nationally. Two LSOAs fall into the next 25% – one in Braunton and the other covering Lundy – with the remaining six LSOAs falling into the 50-75% most deprived areas.

Map of Index of Deprivation 2004



Crown Copyright. All rights reserved. Devon County Council. 100019783 2006

Source: Office of the Deputy Prime Minister

The Local Economy

Summary

Unemployment levels in the market town area are similar to the county average and below the rates for the district and nationally.

The highest level of economic activity is seen in the remaining rural parishes but overall levels are similar local and national comparators. Part-time employment levels are higher in the urban centre, with full-time employment being more common outside Braunton parish.

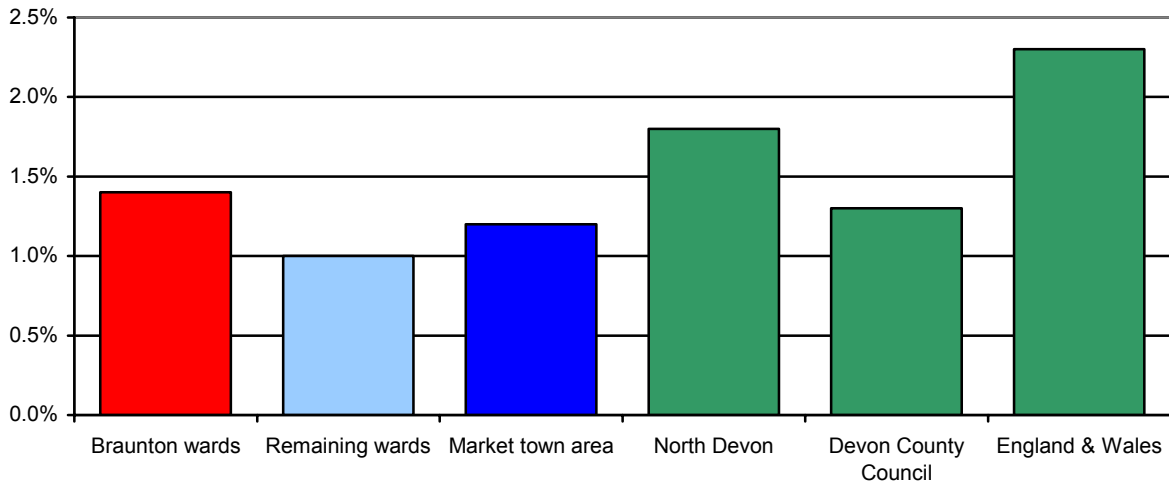
Claim rates in the area for Income Support are below the district, county and national average. A similar picture is seen with respect to Job Seekers Allowance, although the rate for Devon is only marginally higher than that for the market town area.

The proportion of households with an income of less than £20,000 across the market town area is similar to the district and county averages. Fewer households have an income of less than £20,000 in the remaining parishes than in the urban centre.

The greatest proportion of people in employment worked in the wholesale and retail sector with the largest proportion of businesses being in the hotels and restaurants sector.

Unemployment as a proportion of working age resident population (April 2005)

Area	Number unemployed	% working age population
Braunton wards	57	1.4%
Remaining wards	34	1.0%
Market town area	91	1.2%
North Devon	923	1.8%
Devon County Council	5,445	1.3%
England & Wales	752,758	2.3%



Source: Office for National Statistics

Economic activity (2001)

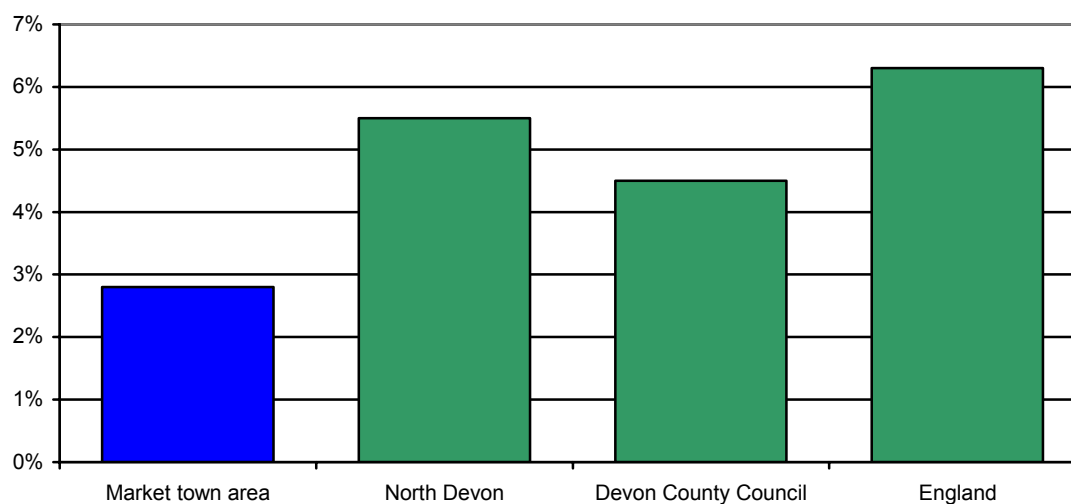
Area	People aged 16 to 74	Economically active population	Economically active	Employed part-time	Employed full-time	Self employed	Unemployed	Students
Braunton parish	5,280	3,359	63.6%	23.3%	51.8%	18.2%	3.5%	3.2%
Remaining parishes	2,337	1,649	70.6%	18.6%	55.4%	20.1%	3.4%	2.5%
Market town area	7,617	5,008	65.7%	21.8%	53.0%	18.8%	3.5%	3.0%
North Devon	62,384	41,484	66.5%	20.9%	50.6%	20.7%	5.0%	2.8%
Devon County Council	503,212	328,379	65.3%	20.5%	52.6%	19.3%	3.9%	3.6%
England	35,532,091	23,756,707	66.9%	17.7%	61.0%	12.4%	5.0%	3.9%

Source: 2001 Census

The data below relating to Income Support and Job Seekers Allowance are based on a best fit of Middle Super Output Areas (MSOAs). Two MSOAs form an area similar to area covered by this profile, but due to their large size, it is not possible to produce figures for Braunton.

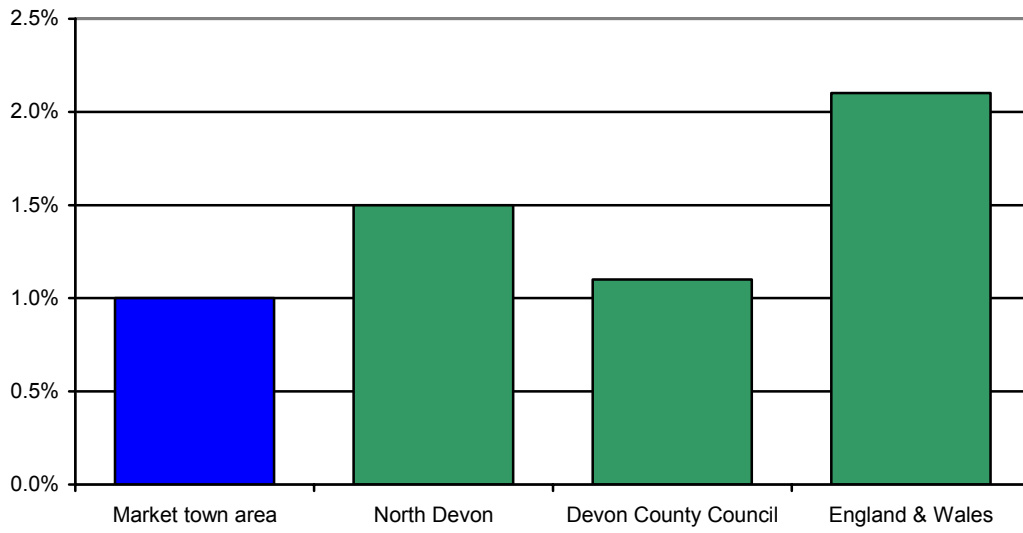
Income Support and Job Seekers Allowance claim rates (2004)

Area	Income Support			Job Seekers Allowance		
	Population aged 16 to 59	All claimants	Claim rate	Population aged 16 to 64	All claimants	Claim rate
Market town area	7,054	200	2.8%	7,867	75	1.0%
North Devon	48,072	2,650	5.5%	53,296	805	1.5%
Devon County Council	388,926	17,530	4.5%	429,574	4,765	1.1%
England & Wales	30,694,973	1,946,020	6.3%	33,239,665	689,810	2.1%

Income Support claim rates (2004)

Source: Department for Work and Pension

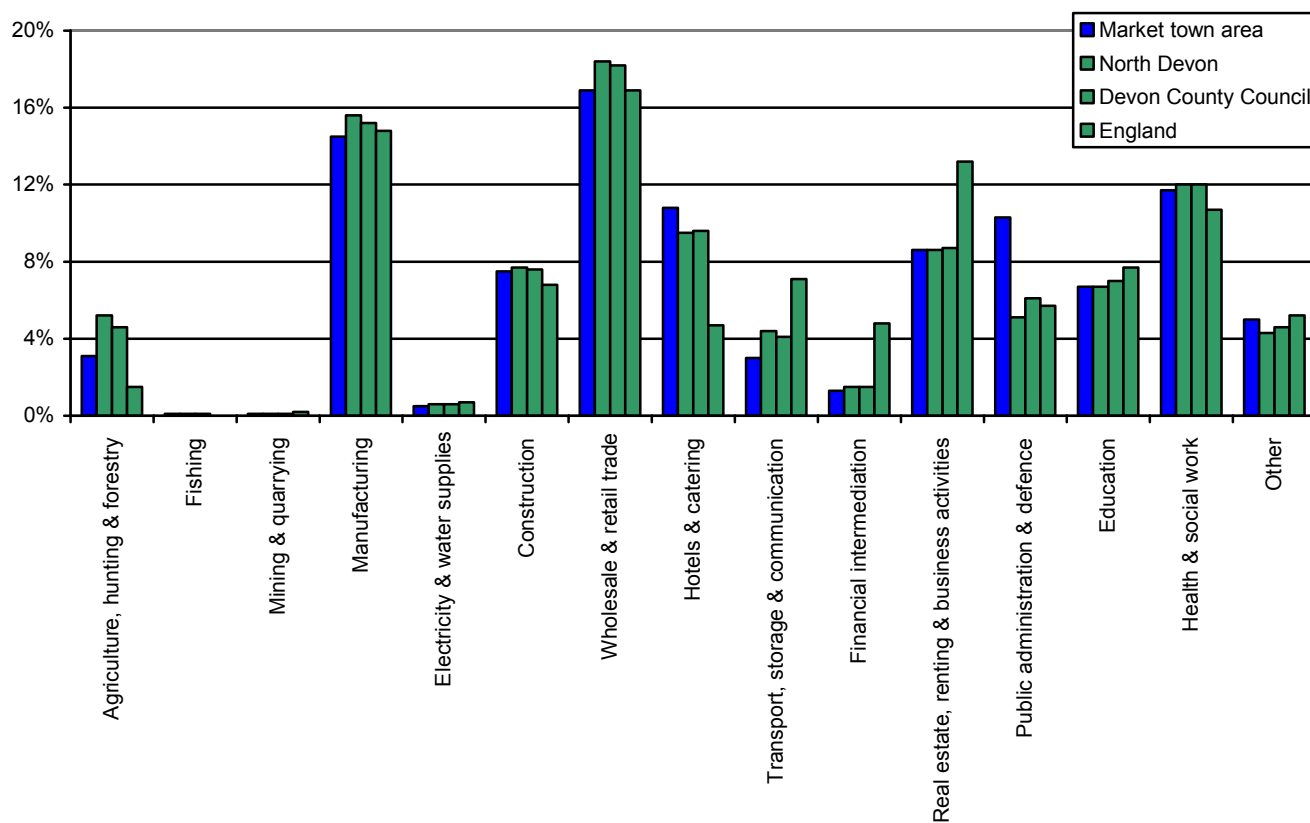
Job Seekers Allowance claim rates (2004)



Source: Department for Work and Pensions

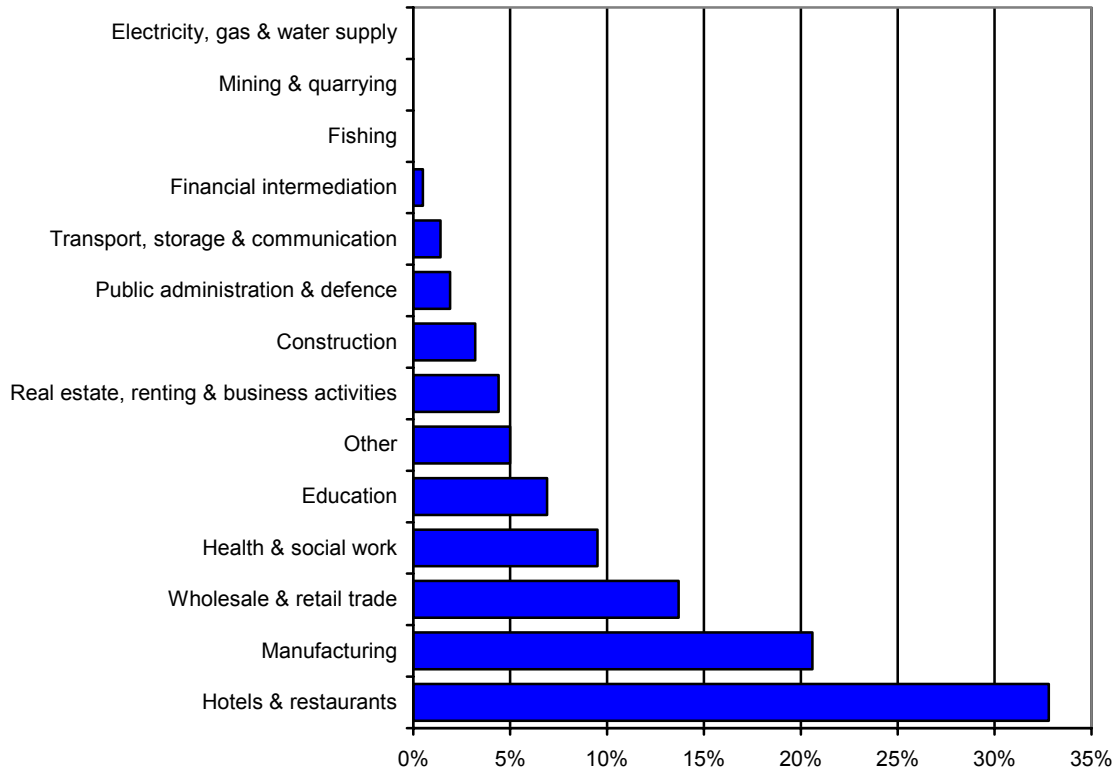
Employment of people living in the area by industry (2001)

Sector	Braunton parish	Remaining parishes	Market town area	North Devon	Devon County Council	England
Agriculture, hunting & forestry	2.8%	3.6%	3.1%	5.2%	4.6%	1.5%
Fishing	0.1%	0.0%	0.1%	0.1%	0.1%	0.0%
Mining & quarrying	0.1%	0.0%	0.1%	0.1%	0.1%	0.2%
Manufacturing	16.8%	10.0%	14.5%	15.6%	15.2%	14.8%
Electricity & water supplies	0.6%	0.3%	0.5%	0.6%	0.6%	0.7%
Construction	8.3%	5.9%	7.5%	7.7%	7.6%	6.8%
Wholesale & retail trade	18.3%	13.9%	16.9%	18.4%	18.2%	16.9%
Hotels & catering	9.4%	13.5%	10.8%	9.5%	9.6%	4.7%
Transport, storage & communication	3.2%	2.4%	3.0%	4.4%	4.1%	7.1%
Financial intermediation	1.2%	1.4%	1.3%	1.5%	1.5%	4.8%
Real estate, renting & business activities	9.1%	7.8%	8.6%	8.6%	8.7%	13.2%
Public administration & defence	4.9%	21.2%	10.3%	5.1%	6.1%	5.7%
Education	7.2%	5.7%	6.7%	6.7%	7.0%	7.7%
Health & social work	12.8%	9.6%	11.7%	12.0%	12.0%	10.7%
Other	5.2%	4.8%	5.0%	4.3%	4.6%	5.2%



Source: 2001 Census

Percentage of businesses in profile area by Standard Industrial Classification (2004)



Source: Annual Business Inquiry

Skills and Learning

Summary

Overall, the proportion of children achieving at least level 4 at Key Stage 2 is above district, county and national averages. Results for English and Maths were better in Braunton parish than in the remaining parishes. Results for Science were similar across the area.

Results for GCSEs are a little different with students in the rural wards achieving better A*-C results than those in the Braunton wards. Rates overall are above those for the district, county and country.

The proportion of people with no qualifications is significantly higher in Braunton parish than in the remaining parishes. A larger proportion of people have lower level qualifications than the county and national averages. There is also a smaller proportion of people with the higher levels of qualifications.

Number and percentage of pupils achieving at least Key Stage 2 Level 4 (2004)

Area	Total pupils	English		Maths		Science	
		Number	% pupils	Number	% pupils	Number	% pupils
Braunton parish	83	75	90.4%	68	81.9%	75	90.4%
Remaining parishes	35	29	82.9%	25	71.4%	32	91.4%
Market town area	118	104	88.1%	93	78.8%	107	90.7%
North Devon	1,113	869	78.1%	849	76.3%	987	88.7%
Devon County Council	7,781	6,030	77.5%	5,766	74.1%	6,803	87.4%
England			75.0%		73.0%		86.0%

Source: Children and Young People's, Devon County Council

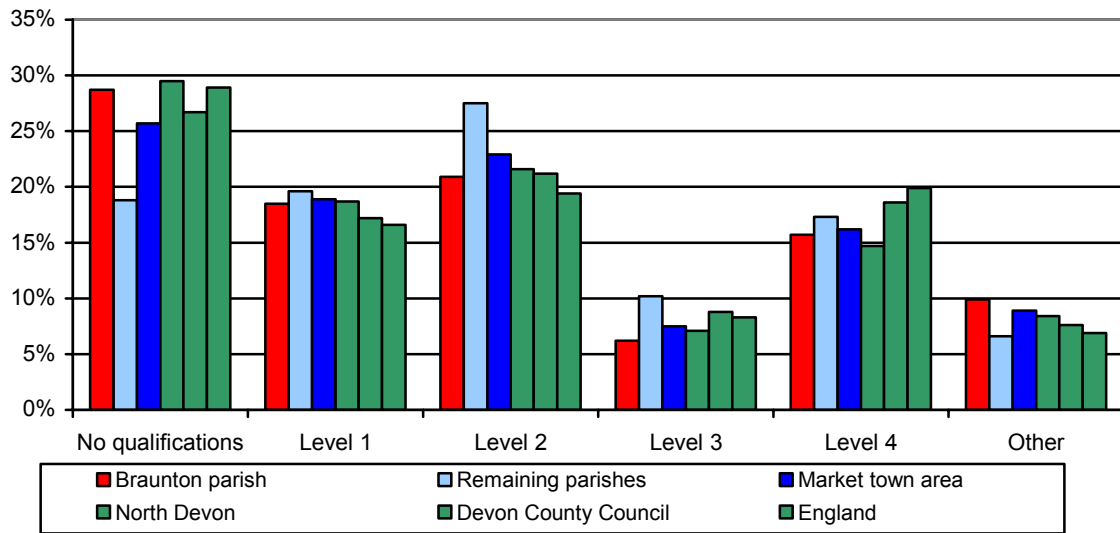
GCSE attainment (2002/03)

Area	Number of students	Students achieving five or more A*-C	% students achieving five or more A*-C	Students achieving five or more A*-G	% students achieving five or more A*-G
Braunton wards	103	57	55.3%	97	94.2%
Remaining wards	32	20	62.5%	30	93.8%
Market town area	135	77	57.0%	127	94.1%
North Devon	1,000	514	51.4%	936	93.6%
Devon County Council			53.8%		93.2%
England			52.9%		88.8%

Source: Children and Young People's, Devon County Council

Highest level of qualification (2001)

Area	No qualifications	Level 1	Level 2	Level 3	Level 4	Other
Braunton parish	28.7%	18.5%	20.9%	6.2%	15.7%	9.9%
Remaining parishes	18.8%	19.6%	27.5%	10.2%	17.3%	6.6%
Market town area	25.7%	18.9%	22.9%	7.5%	16.2%	8.9%
North Devon	29.5%	18.7%	21.6%	7.1%	14.7%	8.4%
Devon County Council	26.7%	17.2%	21.2%	8.8%	18.6%	7.6%
England	28.9%	16.6%	19.4%	8.3%	19.9%	6.9%



Source: 2001 Census

Note:

Level 1: 1+'O' level passes, 1 CSE/GCSE any grades, NVQ level 1, Foundation GNVQ.

Level 2: 5+'O' level passes, 5+CSE's (grade A-C), School Certificate, 1+'A' levels/'AS' levels, NVQ level 2, Intermediate GNVQ.

Level 3: 2+ 'A' levels, 4+'AS' levels, Higher School Certificate, NVQ level 3, Advanced GNVQ.

Level 4: First degree, Higher degree, NVQ levels 4 and 5, HNC, HND, Qualified Teacher Status, Qualified, Medical Doctor, Qualified Dentist, Qualified Nurse, Midwife, Health Visitor.

Health, Care and Wellbeing

Summary

Incapacity Benefit and Severe Disablement Allowance claim rates for the market town area are below the district, county and national averages. This is also the case for claimants of Disability Living Allowance.

The proportion of people living with a limiting long term illness is higher in Braunton parish than in the remaining parishes, with the overall rate being similar to the district, county and national averages. A similar pattern applies to those who described their health as "not good".

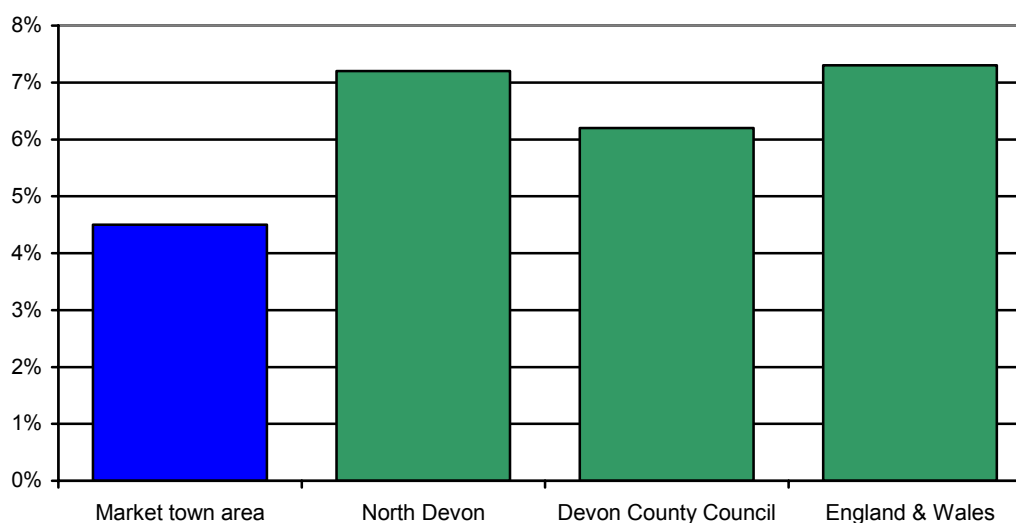
The data below relating to Incapacity Benefit & Severe Disablement Allowance and Disability Living Allowance are based on a best fit of Middle Super Output Areas (MSOAs). Two MSOAs form an area similar to area covered by this profile, but due to their large size, it is not possible to produce figures for Braunton.

Incapacity Benefit & Severe Disablement Allowance and Disability Living Allowance claim rates (2004)

Area	Incapacity Benefit & Severe Disablement Allowance			Disability Living Allowance		
	Population aged 16 to 64	All claimants	Claim rate	Total population	All claimants	Claim rate
Market town area	7,867	355	4.5%	13,196	390	3.0%
North Devon	53,296	3,815	7.2%	87,525	3,490	4.0%
Devon County Council	429,574	26,670	6.2%	704,510	25,645	3.6%
England & Wales	33,239,665	2,421,940	7.3%	52,042,016	2,341,615	4.5%

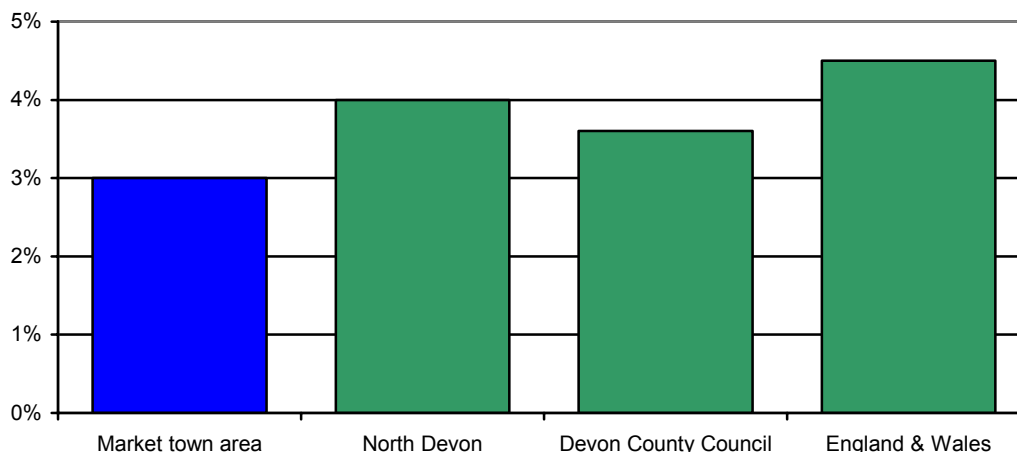
Source: Department for Work and Pensions

Incapacity Benefit and Severe Disablement Allowance claim rates (2004)



Source: Department for Work and Pensions

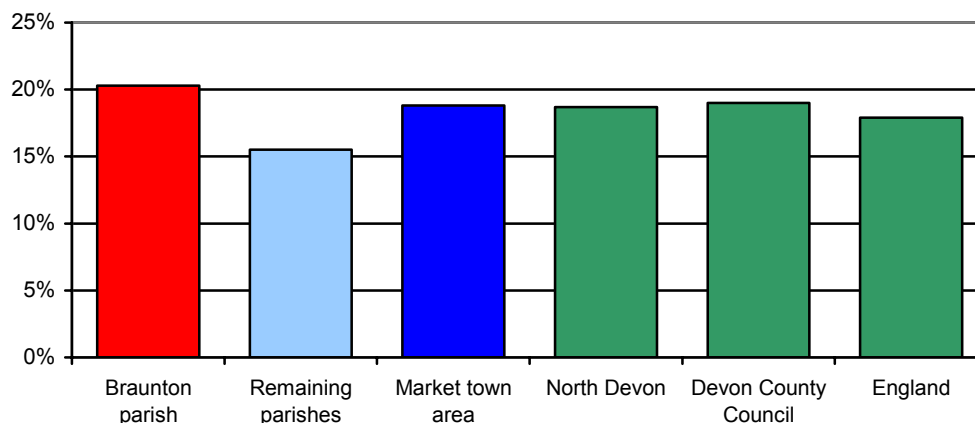
Disability Living Allowance claim rates (2004)



Source: Department for Work and Pensions

Percentage of people living with a limiting long-term illness (2001)

Area	All people	People living with a limiting long-term illness	% people living with a limiting long-term illness
Braunton parish	7,510	1,522	20.3%
Remaining parishes	3,299	510	15.5%
Market town area	10,809	2,032	18.8%
North Devon	87,508	16,377	18.7%
Devon County Council	704,493	133,756	19.0%
England	49,138,831	8,809,194	17.9%



Source: 2001 Census

General health (2001)

Area	All people	People describing their health as good or fairly good		People describing their health as not good	
		Number	%	Number	%
Braunton parish	7,510	6,872	91.5%	638	8.5%
Remaining parishes	3,299	3,074	93.2%	225	6.8%
Market town area	10,809	9,946	92.0%	863	8.0%
North Devon	87,508	79,833	91.2%	7,675	8.8%
Devon County Council	704,493	643,988	91.4%	60,505	8.6%
England	49,138,831	44,702,955	91.0%	4,435,876	9.0%

Source: 2001 Census

Older People

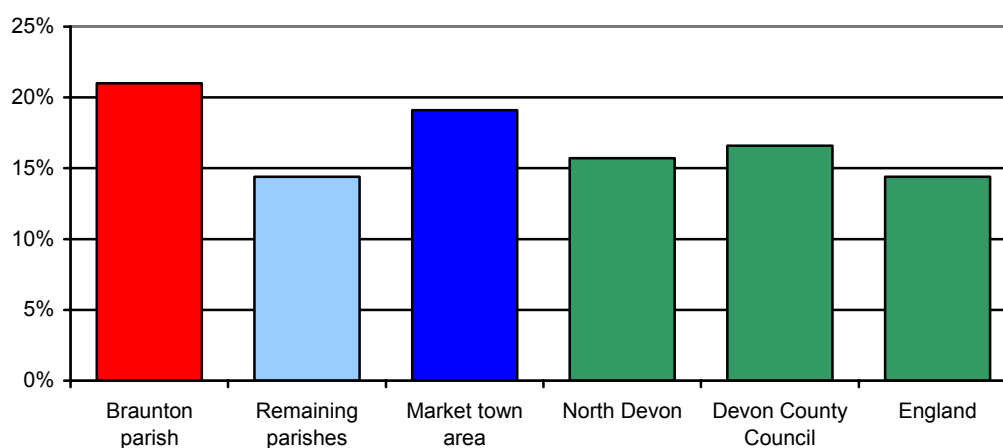
Summary

The level of households occupied by lone pensioners within the market town area is higher than the district, county and national averages. Rates are higher in Braunton parish than the remaining areas.

Social Services client rates in the profile area are lower than the district and Devon averages for 50 to 74 year olds and comparable for the older age groups. For the older age groups rates are lower in the remaining parishes than in Braunton.

Percentage of lone pensioner households (2001)

Area	Total households	Households occupied by lone pensioners	% households occupied by lone pensioners
Braunton parish	3,326	697	21.0%
Remaining parishes	1,265	183	14.4%
Market town area	4,591	879	19.1%
North Devon	36,777	5,764	15.7%
Devon County Council	298,576	49,466	16.6%
England	20,451,427	2,939,465	14.4%



Source: 2001 Census

Number of Social Services clients per 1,000 population (2004)

Area	Clients by age group per 1,000 population of the same age group			
	50-64	65-74	75-84	85 and over
Braunton parish	8.5	26.2	154.8	554.0
Remaining parishes	8.4	37.8	129.9	402.6
Market town area	8.5	28.8	149.2	521.1
North Devon	15.3	40.3	150.8	517.7
Devon County Council	14.9	40.6	142.0	460.3

Source: Adult and Community Services, Devon County Council

Children and Young People

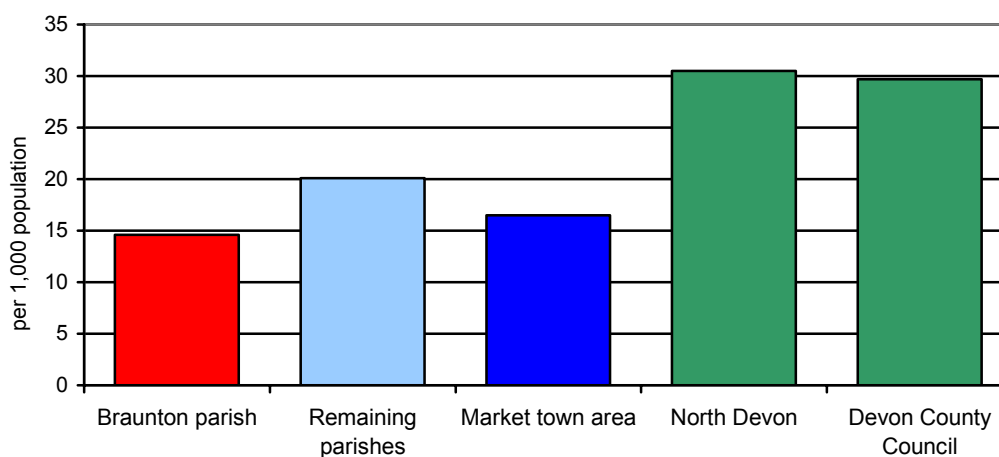
Summary

The proportion of children in need is higher in the remaining parishes than in Braunton. However, rates are still well below the district and county comparators.

Rates of young offenders in the market town area are broadly similar to the district average and somewhat higher than the county average.

Children in need aged 0 to 17 years per 1,000 population aged 0 to 17 years (2003/04)

Area	Number of children aged 0 - 17	Number of children in need aged 0 - 17	Children in need aged 0 - 17 per 1,000 population aged 0 to 17
Braunton parish	1,509	22	14.6
Remaining parishes	796	16	20.1
Market town area	2,305	38	16.5
North Devon	19,636	598	30.5
Devon County Council	145,459	4,317	29.7



Source: Children and Young People's Services, Devon County Council

Young offenders aged 10 to 17 years per 1,000 population aged 10 to 17 years (2000 to 2002)

Area	2000	2001	2002
Braunton wards	25.7	24.5	31.6
Remaining wards	12.4	17.6	26.8
Market town area	20.6	21.8	29.7
North Devon	19.4	22.7	27.6
Devon County Council	14.2	20.0	19.3

Source: Youth Offending Team

Community Safety

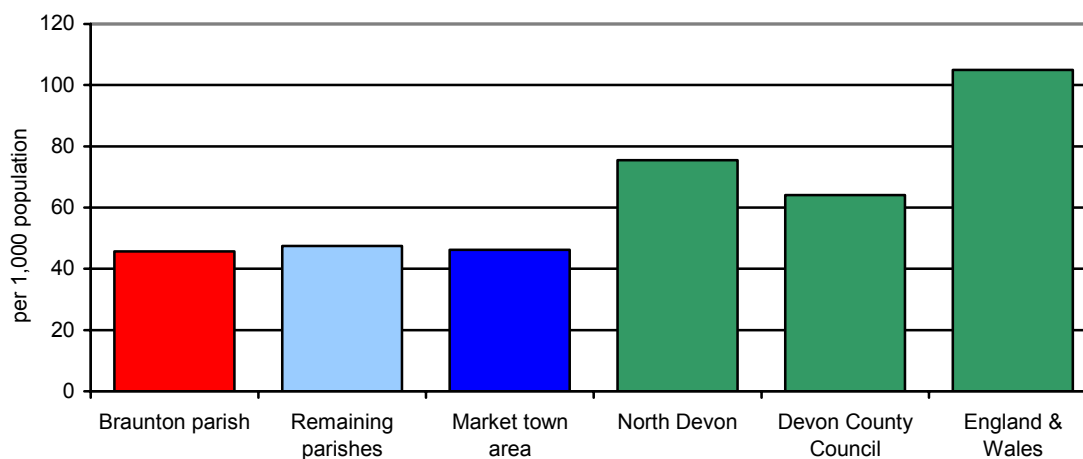
Summary

The rates of crime in all categories for the profile area are lower than the district, county and national averages. The vehicle crime rate is much higher in Braunton than the remaining parishes.

Data comprises addressable data only, and as such rates are based on approximately 92% of all crime.

Total crime per 1,000 population (2004/05)

Area	Population	Total number of crimes	Crime per 1,000 population
Braunton parish	8,286	379	45.7
Remaining parishes	3,265	155	47.5
Market town area	11,551	534	46.2
North Devon	95,121	7,185	75.5
Devon County Council	742,911	47,612	64.1
England & Wales	53,045,600	5,562,700	104.9



Source: Devon & Cornwall Constabulary (Amethyst)

Vehicle crime per 1,000 population (2004/05)

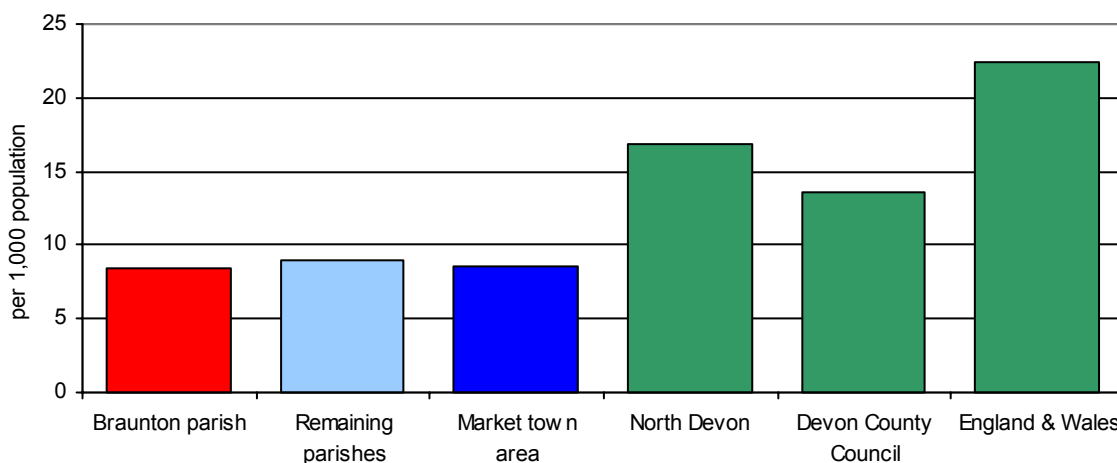
Area	Population	Number of vehicle crimes	Vehicle crime per 1,000 population
Braunton parish	8,286	51	6.2
Remaining parishes	3,265	7	2.1
Market town area	11,551	58	5.0
North Devon	95,121	677	7.1
Devon County Council	742,911	5,594	7.5
England & Wales	53,045,600	738,500	13.9



Source: Devon & Cornwall Constabulary (Amethyst)

Violent crime per 1,000 population (2004/05)

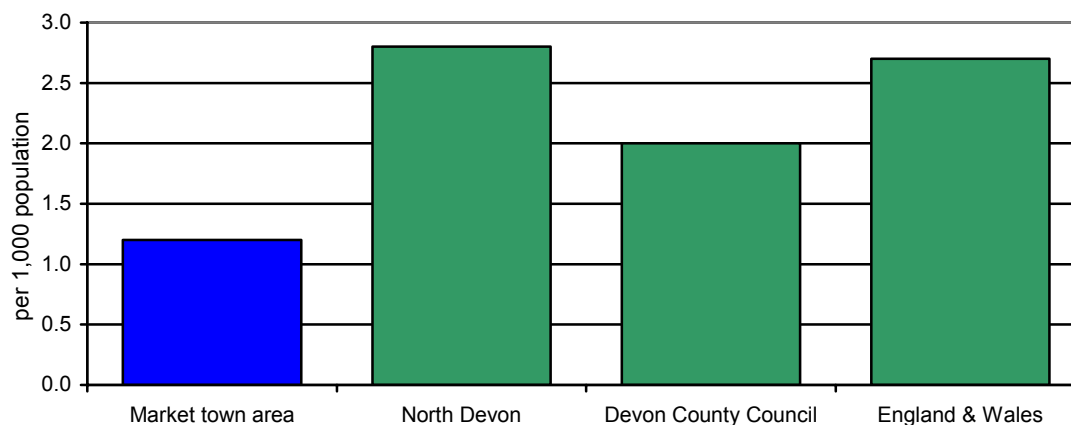
Area	Population	Number of violent crimes	Violent crimes per 1,000 population
Braunton parish	8,286	70	8.4
Remaining parishes	3,265	29	8.9
Market town area	11,551	99	8.6
North Devon	95,121	1,597	16.8
Devon County Council	742,911	10,138	13.6
England & Wales	53,045,600	1,185,700	22.4



Source: Devon & Cornwall Constabulary (Amethyst)

Drug offences per 1,000 population (2004/05)

Area/Comparison	Population	Number of drug offences	Drug offences per 1,000 population
Market town area	11,551	14	1.2
North Devon	95,121	268	2.8
Devon County Council	742,911	1,492	2.0
England & Wales	53,045,600	142,300	2.7

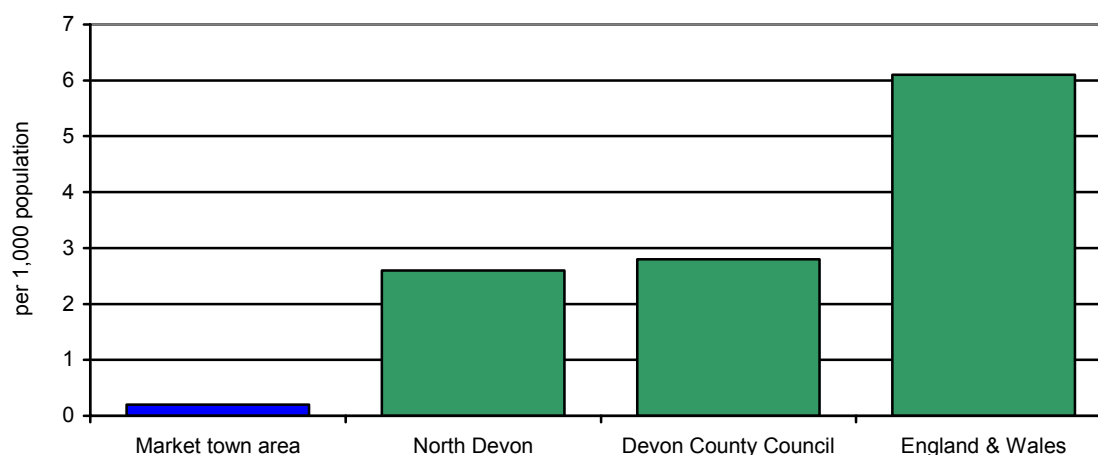


Source: Devon & Cornwall Constabulary (Amethyst)

Note: It is not possible to provide a breakdown for parishes due to small counts.

Dwelling burglaries per 1,000 population (2004/05)

Area/Comparison	Population	Number of dwelling burglaries	Dwelling burglaries per 1,000 population
Market town area	11,551	2	0.2
North Devon	95,121	247	2.6
Devon County Council	742,911	2,046	2.8
England & Wales	53,045,600	321,500	6.1



Source: Devon & Cornwall Constabulary (Amethyst)

Note: It is not possible to provide a breakdown for parishes due to small counts.

Housing

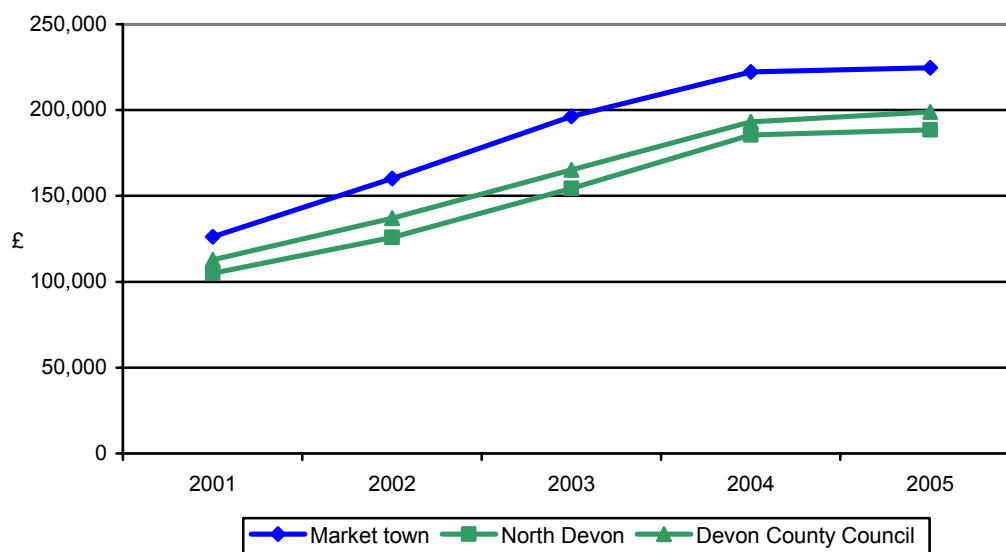
Summary

In 2004 house prices outside Braunton were 13% higher than those in the town. Overall, prices have risen by nearly 80% since 2001 and are 13% higher than the Devon average.

Owner occupation levels are higher in the profile area are higher than the district, county and national averages, with rates in Braunton above those for the remaining parishes.

House price change (2001 to 2005)

Area	2001	2002	2003	2004	2005	% change 2001 - 2005
Braunton parish	£119,937	£155,560	£185,852	£212,929	£215,329	79.5%
Remaining parishes	£150,461	£173,942	£223,883	£245,948	£244,250	62.3%
Market town	£126,296	£160,119	£196,296	£222,131	£224,658	77.9%
North Devon	£104,943	£125,794	£154,310	£185,554	£188,522	79.6%
Devon County Council	£112,752	£136,982	£165,267	£193,045	£198,835	76.3%



Source: Land Registry

Note: Data comprises sales between April and December 2001, all sales in 2002, 2003 and 2004 and from January to March 2005.

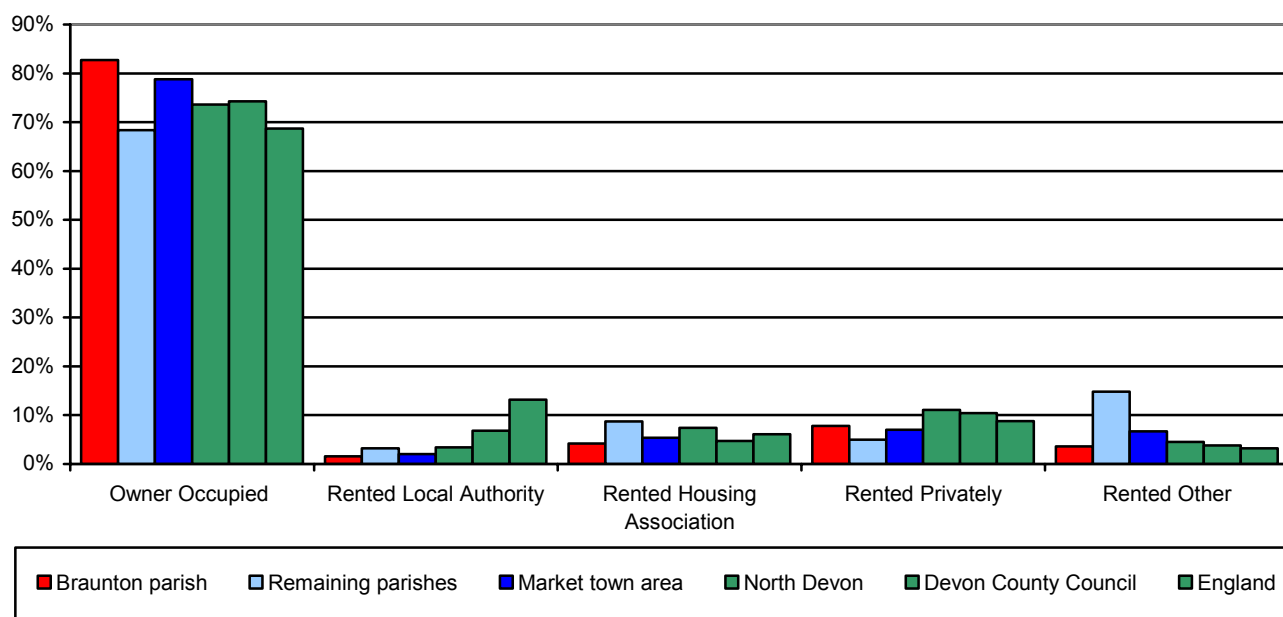
Average house price (2004)

Area	Detached	Semi-Detached	Terraced	Flat/Maisonette	Overall
Braunton parish	£267,556	£190,221	£164,406	£115,986	£212,929
Remaining parishes	£370,543	£187,914	£129,773	£110,000	£245,948
Market town area	£296,095	£189,772	£151,086	£115,488	£222,131
North Devon	£250,176	£175,443	£148,058	£124,173	£185,554
Devon County Council	£266,940	£180,252	£157,985	£138,260	£193,045
England & Wales	£270,745	£162,379	£136,862	£168,298	£178,504

Source: Land Registry

Percentage of dwellings by tenure (2001)

Area	All households	Owner occupied	Rented accommodation:			
			Local authority	Housing associations	Private	Other
Braunton parish	3,326	82.7%	1.6%	4.2%	7.8%	3.6%
Remaining parishes	1,266	68.4%	3.2%	8.7%	5.0%	14.8%
Market town area	4,592	78.8%	2.0%	5.4%	7.0%	6.7%
North Devon	36,776	73.6%	3.4%	7.4%	11.1%	4.5%
Devon County Council	298,576	74.3%	6.8%	4.7%	10.4%	3.8%
England	20,451,427	68.7%	13.2%	6.1%	8.8%	3.2%



Source: 2001 Census

Transport

Summary

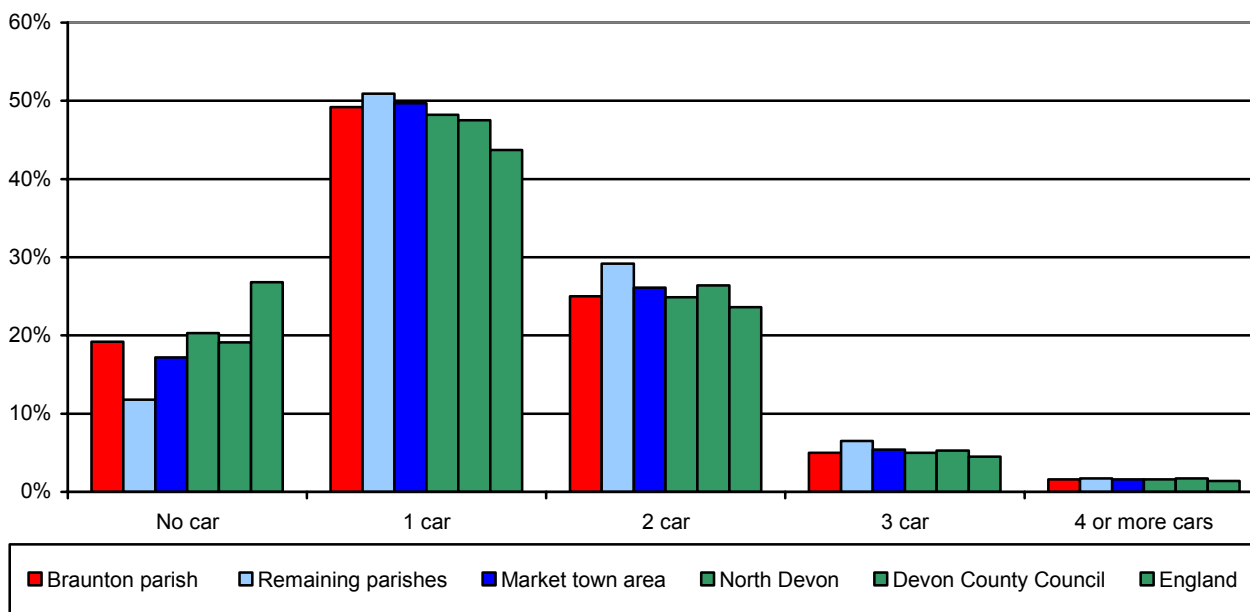
There are slightly higher levels of car ownership outside Braunton. Nearly a fifth of Braunton households do not have access to a car.

Mode of travel to work in the profile area is broadly similar to that in the district and county. There is a noticeably higher proportion of people who travel to work on foot or by bicycle in the remaining parishes. Travel by car is more common in Braunton parish.

Overall the area's accessibility by public transport is comparable to that of the district. It has similar accessibility to shops and a GP to Devon and better accessibility to an acute hospital.

Car ownership (2001)

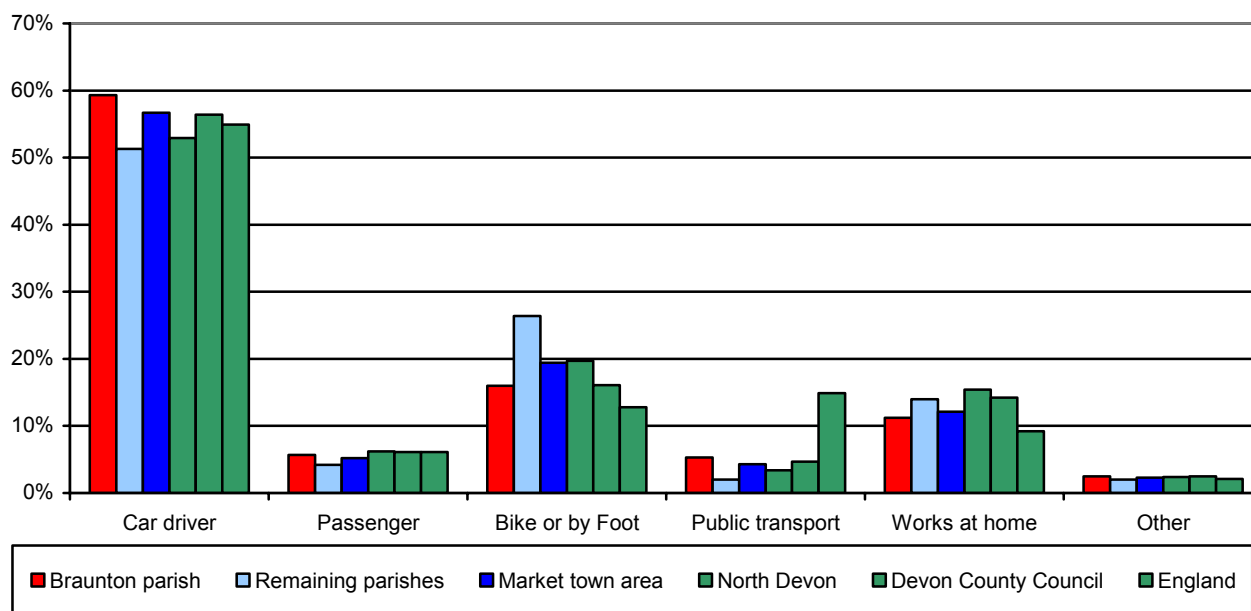
Area	All households	Households with:				
		No car	One car	Two cars	Three cars	Four or more cars
Braunton parish	3,326	19.2%	49.2%	25.0%	5.0%	1.6%
Remaining parishes	1,265	11.8%	50.9%	29.2%	6.5%	1.7%
Market town area	4,591	17.2%	49.7%	26.1%	5.4%	1.6%
North Devon	36,776	20.3%	48.2%	24.9%	5.0%	1.6%
Devon County Council	298,576	19.1%	47.5%	26.4%	5.3%	1.7%
England	20,451,427	26.8%	43.7%	23.6%	4.5%	1.4%



Source: 2001 Census.

Mode of travel to work (2001)

Area	All 16-74 year olds in employment	Percentage of population by mode of travel to work					
		By car or van	Passenger in a car	On a bike or by foot	By public transport	Work from home	Other
Braunton parish	3,234	59.3%	5.7%	16.0%	5.3%	11.2%	2.5%
Remaining parishes	1,574	51.3%	4.2%	26.4%	2.0%	14.0%	2.0%
Market town area	4,808	56.7%	5.2%	19.4%	4.3%	12.1%	2.3%
North Devon	39,316	52.9%	6.2%	19.7%	3.4%	15.4%	2.4%
Devon County Council	314,267	56.4%	6.1%	16.1%	4.7%	14.2%	2.5%
England	22,441,498	54.9%	6.1%	12.8%	14.9%	9.2%	2.1%



Source: 2001 Census

The data below relating to accessibility by public transport are based on a best fit of Lower Super Output Areas (LSOAs).

Accessibility by public transport (2005)

Area	Number of households	Percentage of households that can access		
		Acute hospital within 60 minutes	GP within 30 minutes	Shop within 30 minutes
Braunton area	3,344	98.1%	98.1%	98.1%
Remaining area	2,052	57.4%	62.1%	57.4%
Market town area	5,396	82.6%	84.4%	82.6%
North Devon	36,820	78.9%	85.0%	84.2%
Devon County Council	298,578	66.7%	86.6%	85.2%
England	17,436,116	82.8%	95.2%	94.4%

Source: Department for Transport

Note: Acute hospitals are establishments which provide at least minimal medical, surgical or obstetrical services for inpatient treatment and/or care, and which provide round-the-clock comprehensive qualified nursing service as well as other necessary professional services. Most patients require a relatively short stay.

The Environment – Landscape

Summary

In 2002 Devon County Council undertook and published a landscape appraisal of the county which included a landscape character assessment. The result of this assessment was the division of the County into 32 Landscape Character Zones. The Braunton market town area contains three Landscape Character Zones.

Landscape character

Landscape character is defined as a distinct and recognisable pattern of elements that occur consistently in a particular type of landscape. Character makes each part of the landscape distinct, and gives each its particular sense of place.

Landscape character has an important role to play in that it informs the Devon County Structure Plan's fundamental landscape policy (CO1), requiring that development should be informed by and sympathetic to the landscape character of the area.

In 2002 Devon County Council undertook and published a landscape appraisal of the county which included a landscape character assessment. The result of this assessment was the division of the county into 32 Landscape Character Zones (LCZs), each with its own description and distinctive key characteristic features. The Barnstaple market town area contains parts of three of these LCZs. For those which are largely within the market town area some of their key characteristics are outlined below.

Lundy

Location An offshore island in the middle of the Bristol Channel, 11 miles/18km north north west of Hartland Point and 22 miles/35km west of Morteheo.

Designations - Lundy is designated by Devon County Council as a Coastal Preservation Area.

Key Characteristic Features

- Mostly granite tableland towering high above the sea.
- Exposed and open rolling heathland.
- Stone walls and wire fences.
- Immense seascapes.
- Lack of tree cover.
- Wind and sea swell.

North Devon Downs

Location – The zone meets the sea at Morte Bay and Croyde Bay and runs eastwards towards the edge of Exmoor as far as a line approximately between Kentisbury and East Buckland. Its northern edge is parallel to the north coast but inland, largely following the line of the A3123 road while in the south it keeps north of the Taw Estuary and the A361 road. It forms the northern part of the market town area.

Designations - The coastal area in the west of the zone falls within the North Devon Area of Outstanding Natural Beauty, a designation reflecting its national landscape importance. The same area has been designated as a Coastal Preservation Area by Devon County Council and defined as Heritage Coast by the Countryside Agency.

Key Characteristics Features

- Rounded, open downland, divided by three significant wooded river valleys.
- Large fields, closely trimmed hedgebanks.
- Windtrimmed tree groups and occasional stunted hedgerow trees.
- Parkland scenery, especially in the east.
- Secluded hamlets and farms in valley bottoms.
- Coastal down headlands in the west enclosing broad sandy bays.
- Picturesque cob and thatch coastal villages.

Taw-Torridge Estuary

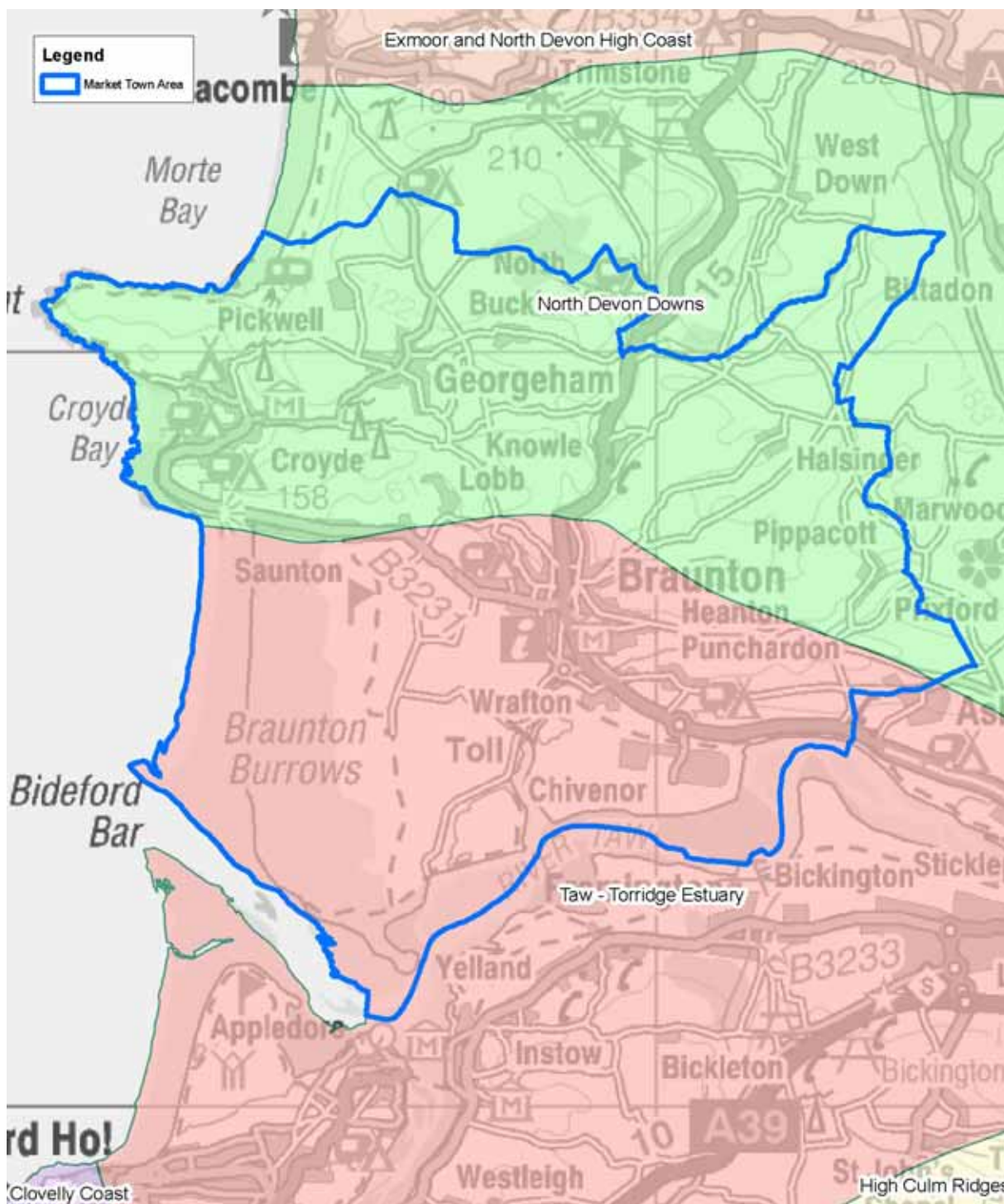
Location – The zone occupies the central part of the coast of northern Devon centred on the two towns of Bideford to the west and Barnstaple to the east and encompassing the estuaries of the Taw and Torridge rivers, including their joint outflow to the sea. The most southern part of the market town area is covered by this zone.

Designations – The coastal strip of the zone, effectively confined to the marsh and dune systems of Northam Burrows and Braunton Burrows, is part of the North Devon Area of Outstanding Natural Beauty, indicating the national landscape importance of this area. A rather wider coastal area, stretching inland and including Braunton Marsh and Great Field, is within the County Council's designated Coastal Preservation Area. This same area is defined by the Countryside Agency as Heritage Coast.

Key Characteristics Features

- Vast estuary of two river systems.
- Extensive flat land including salt marshes, sand and mudflats, dune systems and slacks, historic open field, beaches.
- Urban waterfronts and historic estuary settlements.
- Important ecological habitats.

Landscape Character Zones within the market town area.



The Environment – Wildlife and Geology

Summary

The last 60 years have seen many dramatic changes within the English countryside, with increasing urbanisation and shifting patterns of agriculture. Devon has fared better than most, however, being protected by its remoteness and undulating terrain.

There remains much wildlife and geology to enjoy and conserve, and many opportunities exist throughout the County to enhance the natural environment. Landowners, industry and, of course, local communities all have the chance to contribute to the conservation of Devon's rich natural history.

Braunton is a small Market Town Area but is packed full of important wildlife habitats, many of international importance. The stunning sand dunes of Braunton Burrows are joined by the mudflats and sand banks of the Taw-Torridge Estuary, the coastline of Baggy Point with its maritime heath and grassland and Braunton Marsh with its grasslands and wet ditches. Much of the area lies within a world class UNESCO Biosphere Reserve. This region, particularly around the coastline, is also very important for its geology. This is amply demonstrated by Lundy, which is also of tremendous wildlife value for its dry heath and cliff grassland. The seas around Lundy have been designated England's first Marine Nature Reserve.

This range of habitats supports a wealth of plants and animals. For example, the Burrows is home to over 400 flowering plants (including rarities such as the sea stock and water germander) and 33 species of butterflies have been recorded. The site is also of interest for its birds, as is the Taw-Torridge Estuary which supports large numbers of overwintering and migratory waders, such as curlew and lapwing (the total number of waders present at any one time can reach over 20,000). The area also has an important roost site for the rare greater horseshoe bat. On Lundy, puffins nest in burrows (Lundy is Norse for 'Puffin Island') and the Lundy cabbage is a plant found only on this island.

Key sites

The table below contains information on the key features of some of the most important wildlife sites of this part of Devon. A map is also included to illustrate these.

Site name	Interest	Designation
Braunton Burrows	Extensive, species-rich sand dune system.	SAC, SSSI
Lundy	Dry heath, species-rich grassland, migratory and breeding birds. Lundy cabbage.	SAC, MNR, SSSI
Braunton Swanpool	Reedbeds and species-rich marshy grasslands.	SSSI
Caen Valley Bats	Maternity roost and winter hibernacula for the greater horseshoe bat.	SSSI
Chapel Hill	Important population of the rare plant, Pennyroyal.	SSSI
Greenaways & Freshmarsh, Braunton	Species-rich marshy grasslands and water plant communities of drainage ditches.	SSSI
Saunton to Baggy Point Coast	Important geological exposures and maritime heathland and grassland.	SSSI
Taw-Torridge Estuary	Slatmarsh, mudflats and sandbanks which support large numbers of overwintering and migratory waders.	SSSI

In addition to the table above, the Braunton area has **10 County Wildlife Sites**. These cover a range of habitats including unimproved neutral grassland, broadleaved woodland, maritime grassland, saltmarsh and sand dunes.

Key:

Special Areas of Conservation (SAC): these sites are notified because they contain species and/or habitats of European importance (listed in the Habitats Directive 1994). SAC is a statutory designation with legal implications.

Marine Nature Reserve (MNR): is a site recognised as being a marine reserve of national significance. It includes both the sea and seabed and is a statutory designation.

Sites of Special Scientific Interest (SSSI): these sites are notified because of their national importance for wildlife or geological features (gSSSI, above). SSSI is a statutory designation with legal implications. SSSI status does not confer any right of access to the public.

County Wildlife Sites (CWS): these are sites of county importance for wildlife. CWS is not a statutory designation and does not have any legal status, though CWSs are usually included in district planning documents. CWS recognition places no formal obligation on the landowner, but may increase eligibility for land management grants.

Key sites within the market town area

