

PART 3
BACKGROUND PAPER
FOR THE EXAMINATION IN PUBLIC

Background Paper 5
‘Maps and Diagrams’

This paper sets out a compendium of relevant Maps and Diagrams that may be relevant for the discussions at the Examination in Public in June 2003 from the

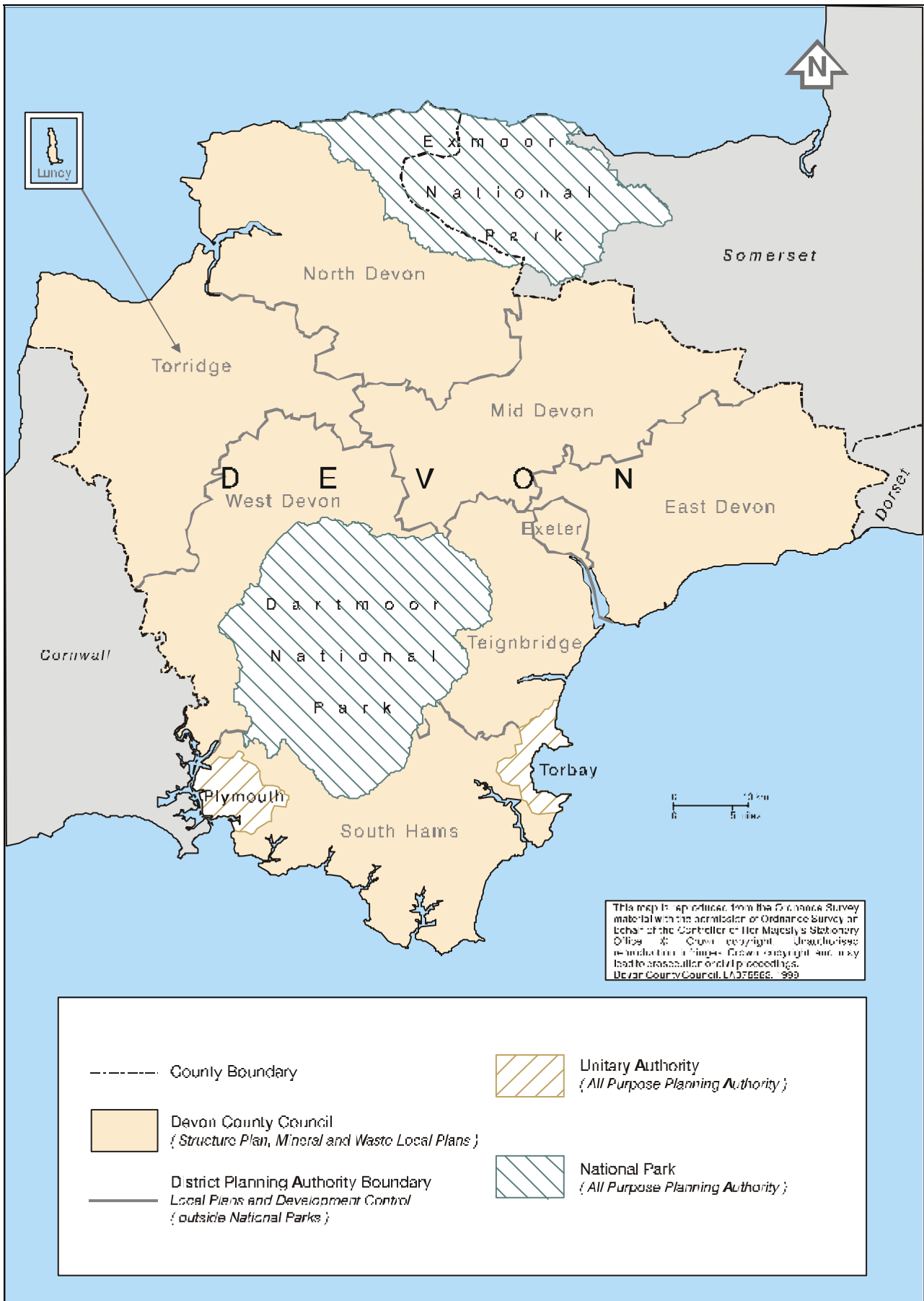
- a) Deposit Plan*
- b) Pre-EIP Changes to the Deposit Draft,*
- c) relevant Background Papers*

May 2003

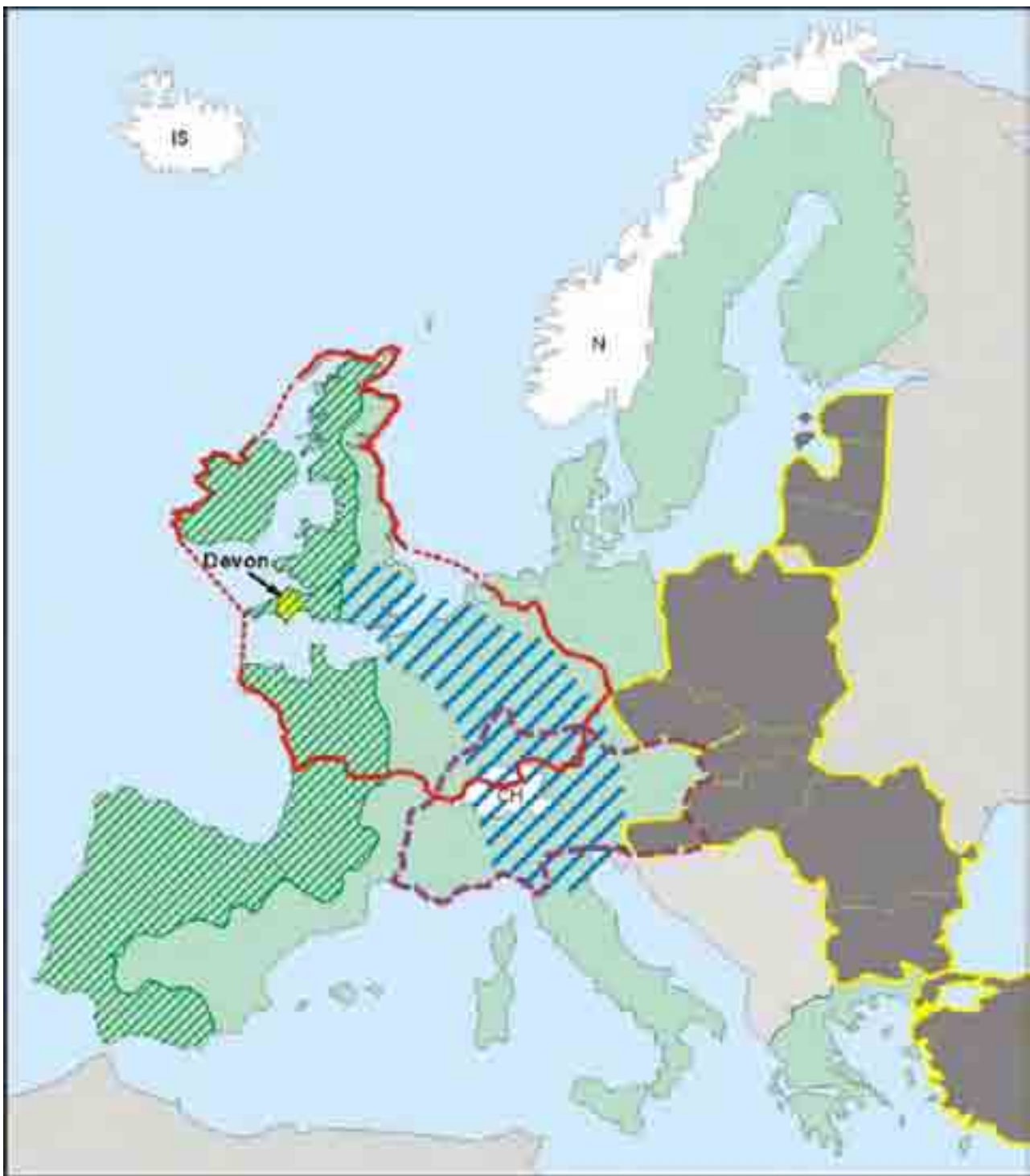
PART 3

MAPS AND DIAGRAMS

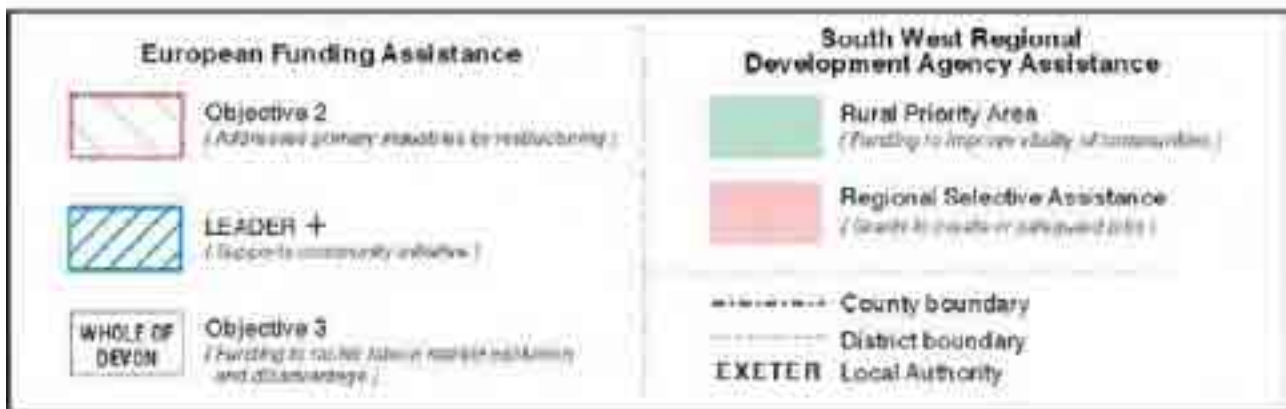
Map 1:	Administrative Boundaries	119
Map 2:	European Context	120
Map 3:	Areas Eligible for Funding	121
Map 4:	South West Regional Planning Guidance - Spatial Development Strategy	122
Map 5:	Devon Strategy Diagram.....	123
Diagram 6:	Plymouth Principal Urban Area (revised Map 6 in Deposit Draft)	124
Diagram 7:	Exeter Principal Area (revised Map 7 in Deposit Draft).....	125
Diagram 8:	Torbay Principal Area (Revised Map 8 in Deposit Draft).....	126
Map 9:	Landscape Character Zones.....	127
Map 10:	Landscape Policy Area.....	128
Map 11:	Natural Areas	129
Map 12:	Nature Conservation Designations (June 2002)	130
Map 13:	Agricultural Land Classification	131
Map 14:	Regional Transport Strategy	132
Map 15:	Strategic Bus Routes.....	133
Map 16:	Rail Network.....	134
Map 17:	Devon Road Network.....	135
Map 18:	Strategic Road Network	136
Map 19:	Long Distance Cycle and Walking Routes	137
Map 20:	KEY DIAGRAM.....	138
Map 21:	Plymouth Constraint	139
Map 22:	Exeter Constraints.....	140
Map 23:	Torbay Constraints.....	141
	Local Planning Authority Addresses.....	143



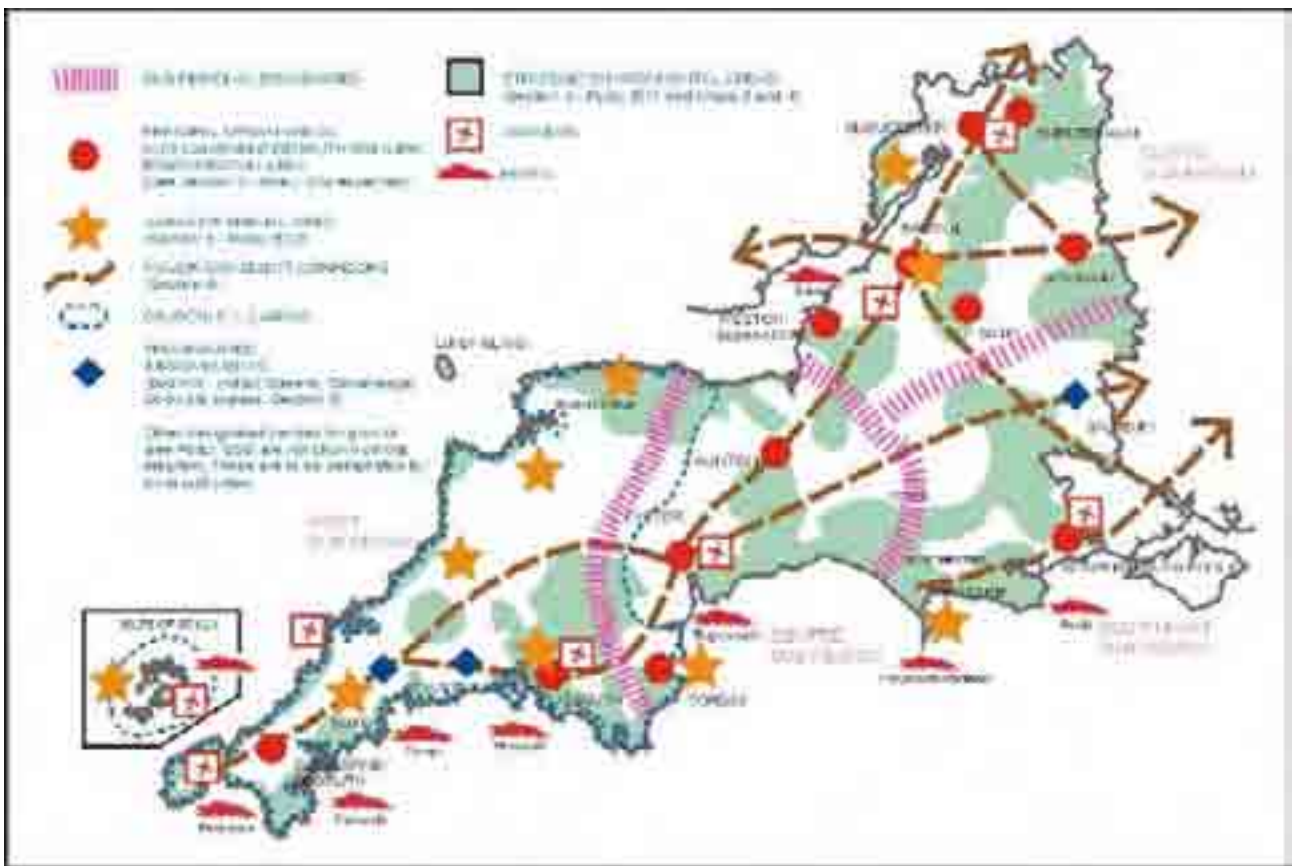
Map 1: Administrative Boundaries



Map 2: European Context



Map 3: Areas Eligible for Funding



Map 4: South West Regional Planning Guidance - Spatial Development Strategy



Map 5: Devon Strategy Diagram



Diagram 7: Exeter Principal Area (revised Map 7 in Deposit Draft)

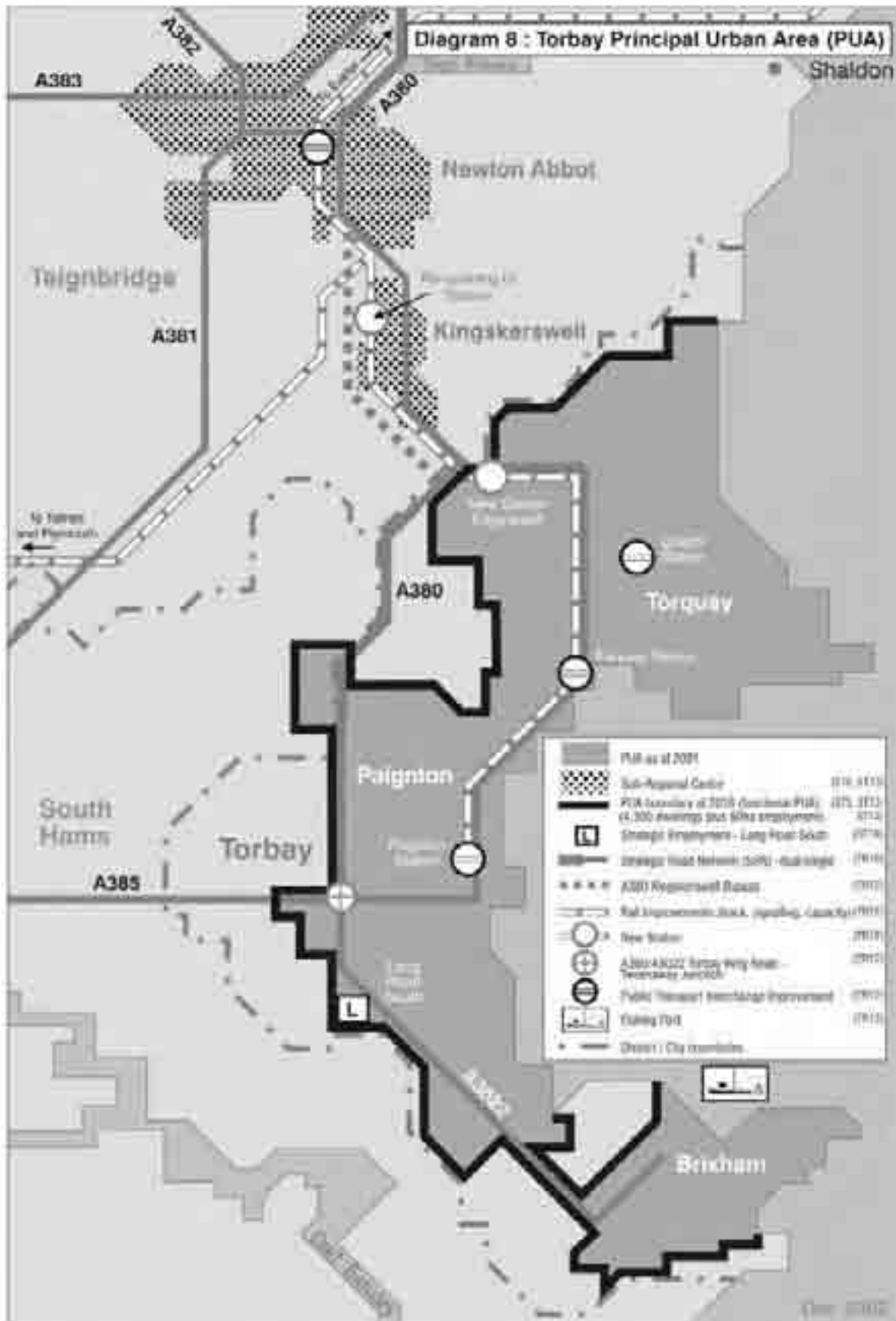
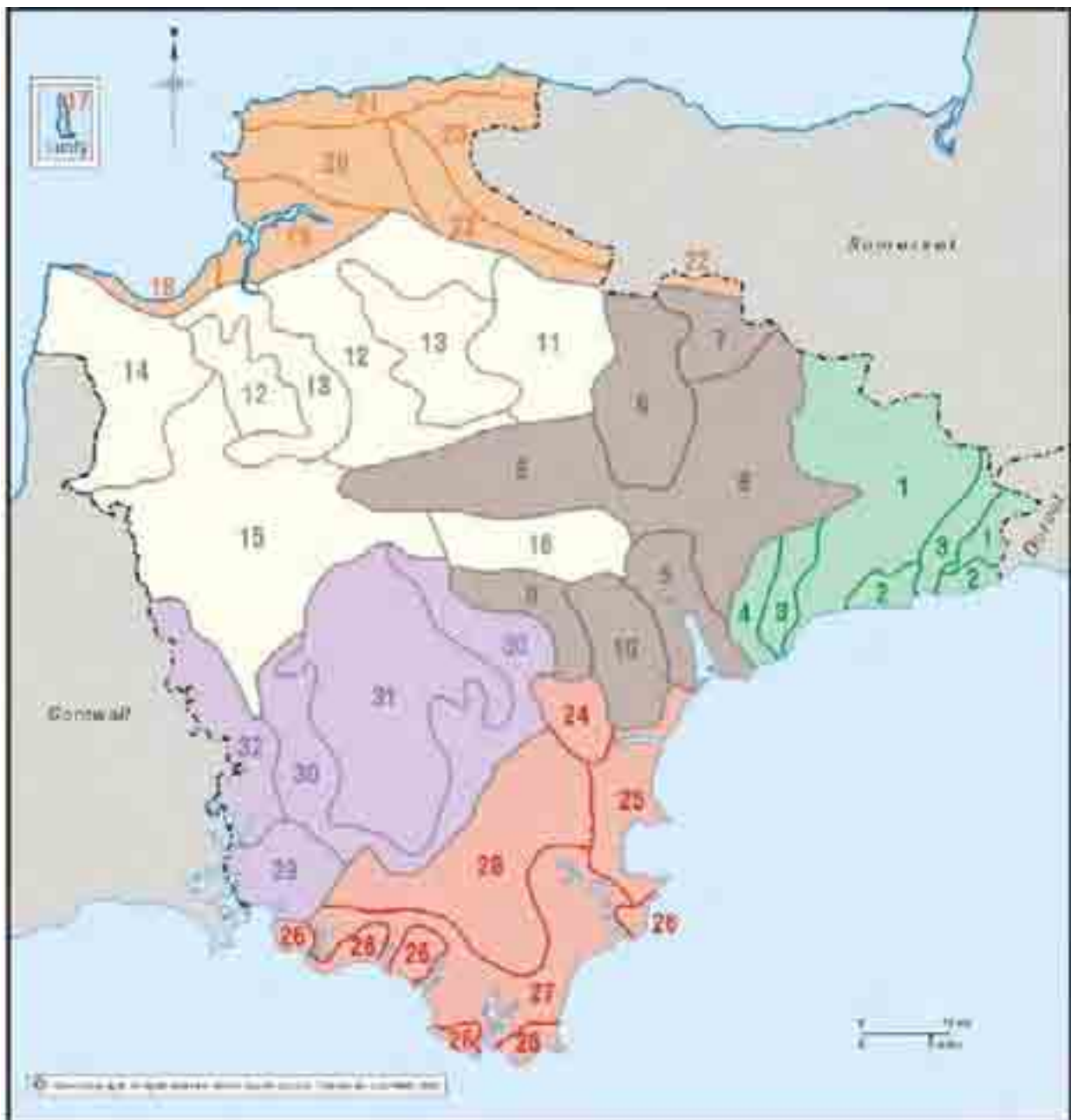


Diagram 8: Torbay Principal Area (Revised Map 8 in Deposit Draft)

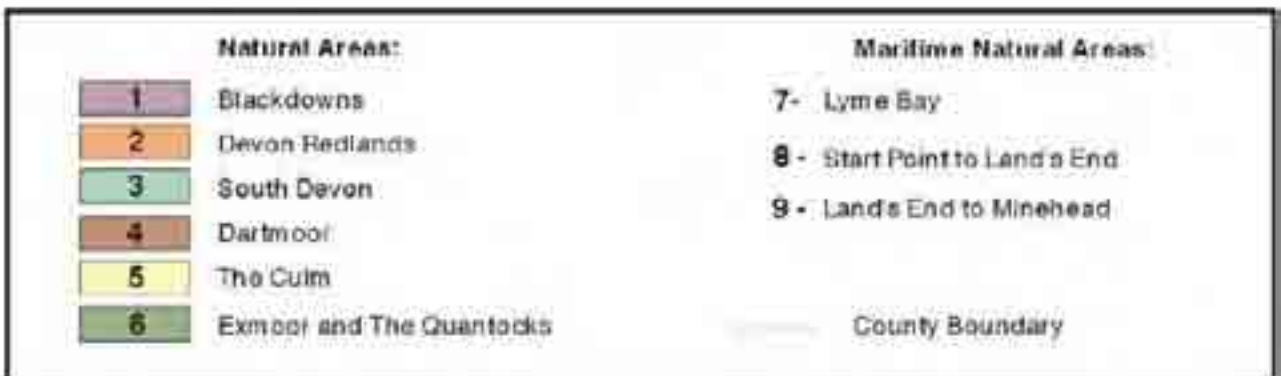


<p>Eastern Devon</p> <ul style="list-style-type: none"> 1. Greensand Ridges 2. Coastal Chalk Plateaux 3. Axe and Otter Valleys 4. Pebble Bed Heaths <p>Central Devon</p> <ul style="list-style-type: none"> 5. Exeter and Estuary Fringe 6. Exe Valley and Environs 7. Bampton and Beer Downs 8. Mid Devon Farming Belt 9. Teign Valley 10. Haldon Ridge 	<p>Culm Measures</p> <ul style="list-style-type: none"> 11. Witheridge - Rockenford Moor 12. High Culm Ridges 13. Taw and Torridge River Systems 14. Hartland and Atlantic Coast Interior 15. Broadbury and Western Devon Ridges 16. Teelton St Mary Area <p>Northern Devon</p> <ul style="list-style-type: none"> 17. Lundy 18. Clovelly Coast 19. Taw - Torridge Estuary 20. North Devon Downs 21. Exmoor and North Devon High Coast 22. Exmoor Fringe 23. Exmoor Upland 	<p>Southern Devon</p> <ul style="list-style-type: none"> 24. Bovey Basin 25. Torridge Riviera 26. South Devon Coastal Plateaux 27. Ria Coastline 28. Under Dartmoor <p>Dartmoor and West Devon</p> <ul style="list-style-type: none"> 29. Plymouth City, Estuary and Environs 30. Dartmoor - Enclosed 31. Dartmoor - High Moor 32. Tamar and Tavay Valleys
------------------------------------------------------------------------------------------------------------------------------------------------------------------------------------------------------------------------------------------------------------------------------------------------------------------------------------------------------------------------------------------------------------------------------------------------------------------------------	---------------------------------------------------------------------------------------------------------------------------------------------------------------------------------------------------------------------------------------------------------------------------------------------------------------------------------------------------------------------------------------------------------------------------------------------------------------------------------------------------------------------------------------------------------------------------------------------------------------------------	-----------------------------------------------------------------------------------------------------------------------------------------------------------------------------------------------------------------------------------------------------------------------------------------------------------------------------------------------------------------------------------------------------------------------------------------------------------------------

Map 9: Landscape Character Zones



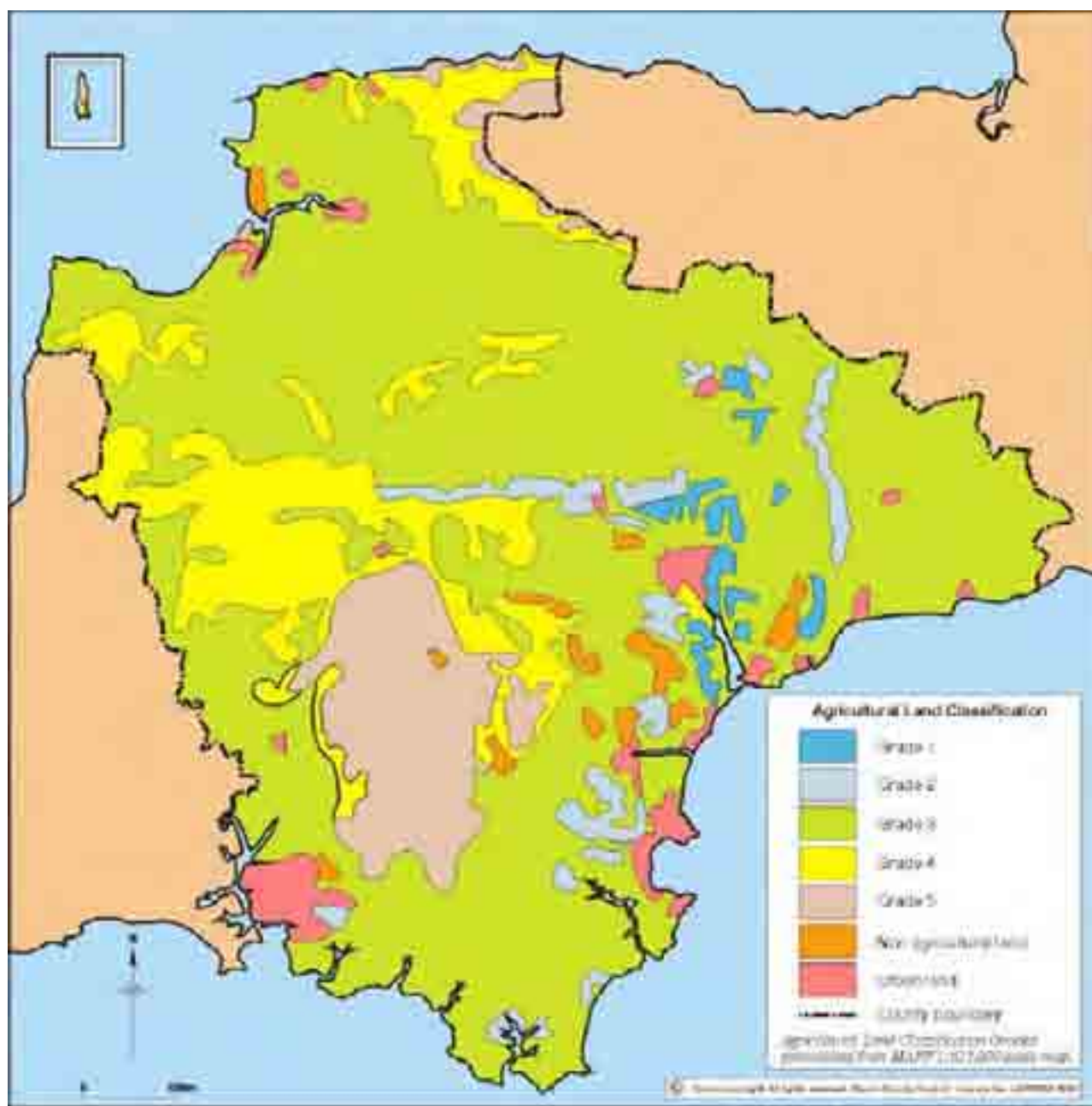
Map 10: Landscape Policy Area



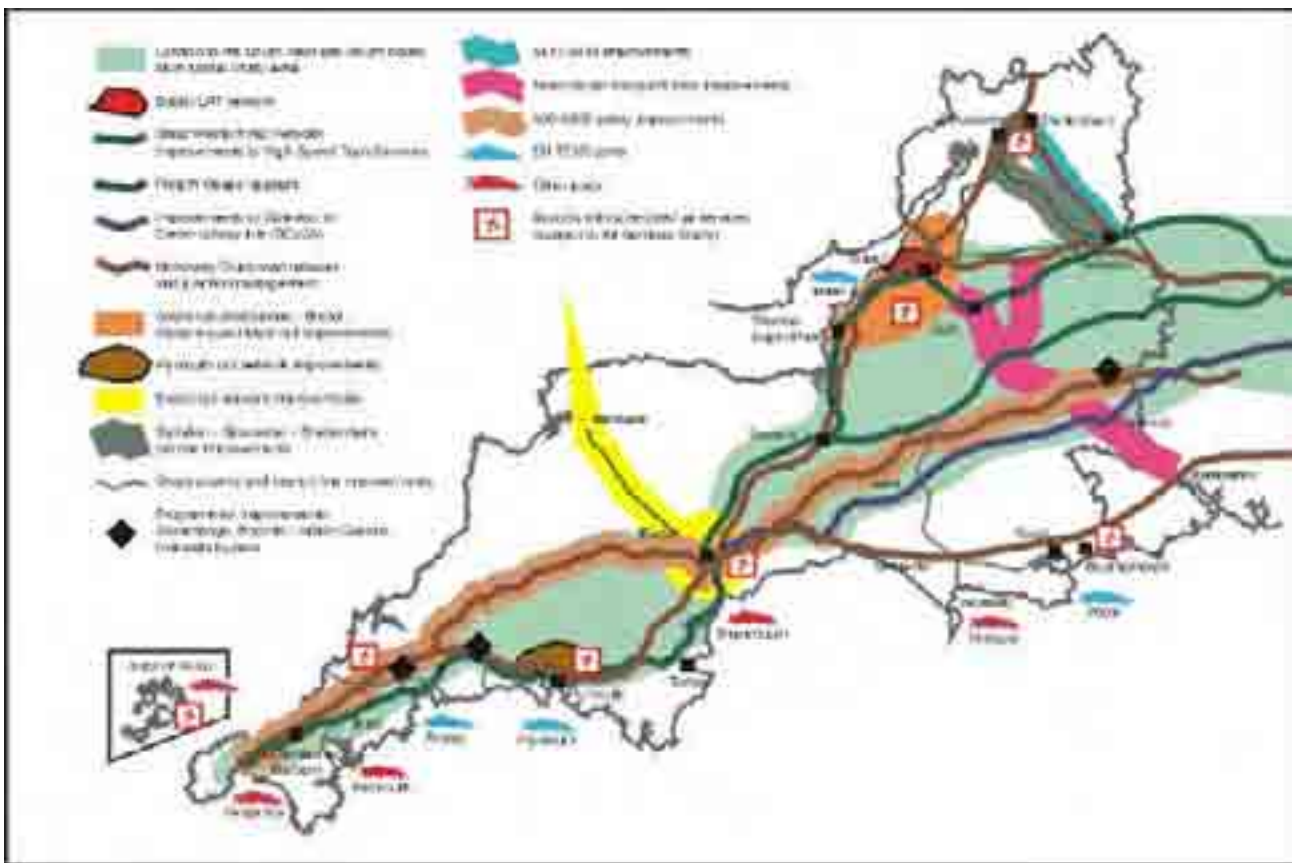
Map 11: Natural Areas



Map 12: Nature Conservation Designations (June 2002)



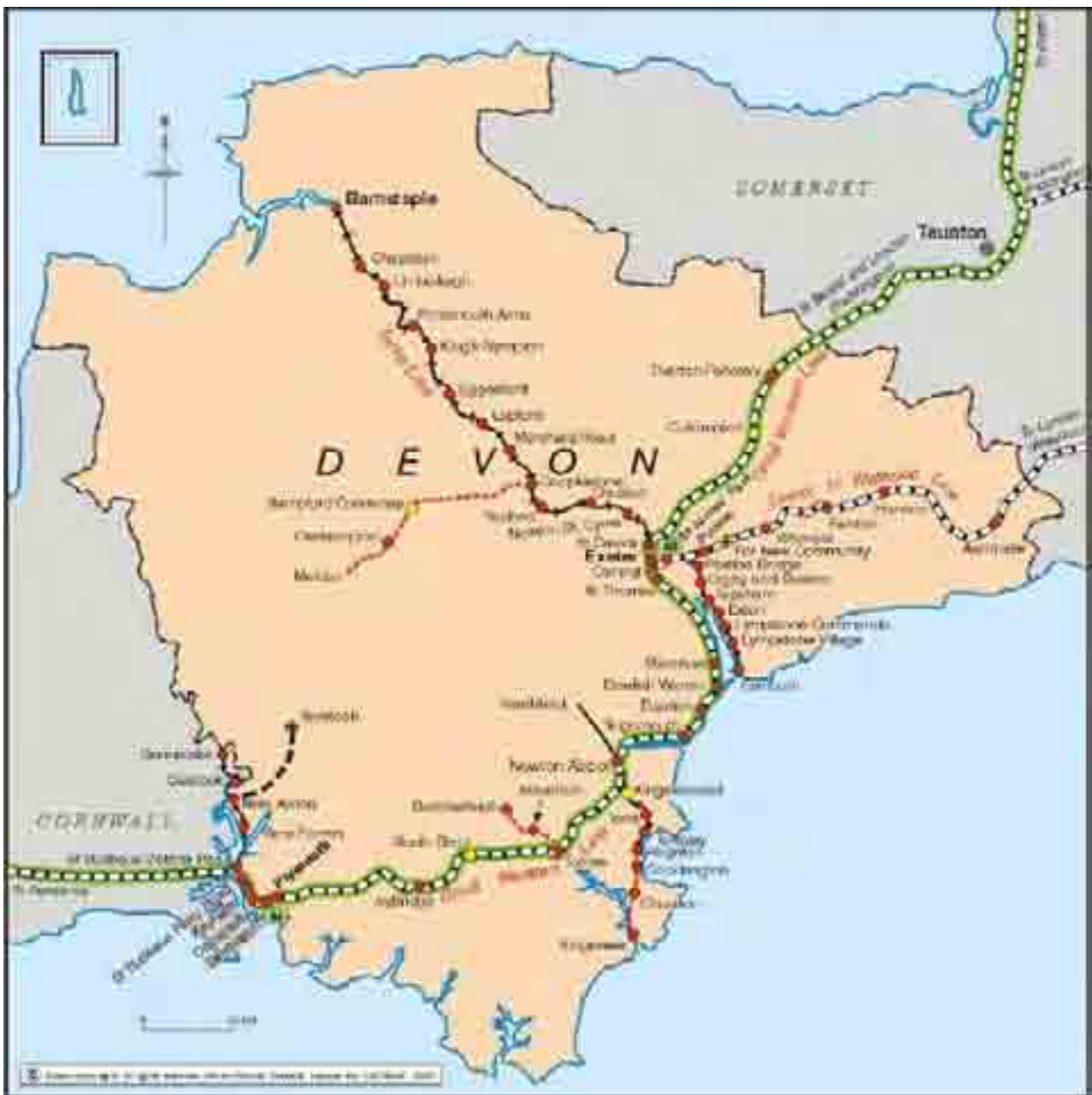
Map 13: Agricultural Land Classification



Map 14: Regional Transport Strategy



Map 15: Strategic Bus Routes



Map 16: Rail Network



Map 17: Devon Road Network

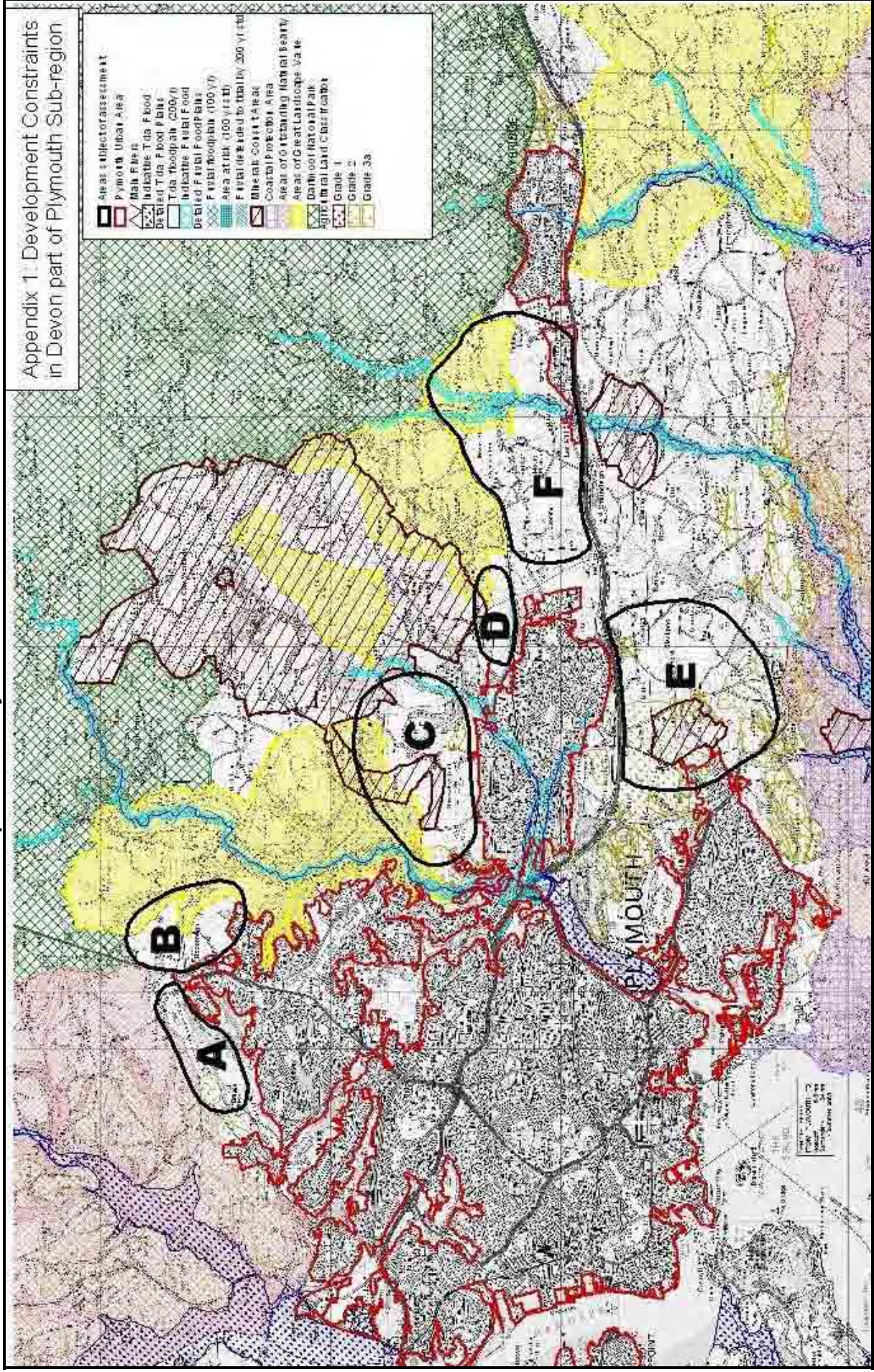


Map 18: Strategic Road Network



Map 19: Long Distance Cycle and Walking Routes

Map 21: Plymouth Constraints



Map 23: Torbay Constraints



Local Planning Authority Addresses

Structure/Unitary Authority	Planning	District Planning Authority
<p>Devon County Council Environment Directorate Lucombe House County Hall EXETER EX2 4QW Tel: 01392 382275 Fax: 01392 382135 email: structureplan@devon.gov.uk Website: www.devon.gov.uk</p>		<p>East Devon District Council Environment Directorate Council Offices Knowle SIDMOUTH EX10 8HL Tel: 01395 516551 Fax: 01395 517509 email: localplan@eastdevon.gov.uk Website: www.eastdevon.gov.uk</p>
		<p>South Hams District Council Forward Planning Follaton House Plymouth Road TOTNES TQ9 5NE Tel: 01803 861234 Fax: 01803 861166 email: Local.Plan@south-hams-dc.gov.uk Website: www.south-hams-dc.gov.uk</p>
<p>Plymouth City Council Department Development Civic Centre PLYMOUTH PL1 2EW Tel: 01752 305473 Fax: 01752 304231 email: structure.plan@plymouth.gov.uk Website: www.plymouth.gov.uk</p>		<p>Exeter City Council Forward Planning Economy and Dev't Directorate Civic Centre EXETER EX1 1JN Tel: 01392 277888 Fax: 01392 265165 email: local.plan@exeter.gov.uk Website: www.exeter.gov.uk</p>
		<p>Teignbridge District Council Directorate of Planning and Environment Forde House, Brunel Road NEWTON ABBOT TQ12 4XX Tel: 01626 361101 Fax: 01626 215760 email: planning@teignbridge.gov.uk Website: www.teignbridge.gov.uk</p>
<p>Torbay Council Strategic Services Directorate Town Hall Castle Circus TORQUAY TQ1 3PQ Tel: 01803 208888 Fax: 01803 208882 email: strategic@torbay.gov.uk Website: www.torbay.gov.uk</p>		<p>Mid Devon District Council Planning and Technical Services Ailsa House Tidcombe Lane TIVERTON EX16 4DZ Tel: 01884 255255 Fax: 01884 255584 email: fplan@middevon.gov.uk Website: www.middevon.gov.uk</p>
		<p>Torridge District Council Planning and Technical Services Riverbank House BIDEFORD EX39 2QG Tel: 01237 428700 Fax: 01237 424971 / 478849 email: local.plans@torridge.gov.uk Website: www.torridge.gov.uk</p>
<p>Dartmoor National Park Authority Parke Haytor Road Bovey Tracey NEWTON ABBOT TQ13 9JQ Tel: 01626 832093 Fax: 01626 834684 email: ForwardPlanning@dartmoor-mpa.gov.uk Website: www.dartmoor-mpa.gov.uk</p>		<p>North Devon District Council Senior Policy Planner Civic Centre BARNSTAPLE EX31 1EA Tel: 01271 388392 Fax: 01271 323638 email: localplan@northdevon.gov.uk Website: www.northdevon.gov.uk</p>
		<p>West Devon Borough Council Planning and Development Oaklands Drive OKEHAMPTON EX20 1LH Tel: 01822 813600 Fax: 01822 813635 email: localplan@westdevon.gov.uk Website: www.wdbc.gov.uk</p>

Cornwall Addresses

Cornwall County Council
County Hall
Truro
TR1 3AY
Tel: 01872 323466
Fax: 01872 323808
e-mail: structureplan@cornwall.gov.uk
Website: www.cornwall.gov.uk

Caradon District Council
Luxstowe House
Liskeard
Cornwall
PL14 3DJ
Tel: 01579 341000
Fax: 01579 341001
Email: postroom@caradon.gov.uk
Website: www.caradon.gov.uk

Government Office South West

Plymouth Office
Mast House
Shepherds Wharf
24 Sutton Road
Plymouth PL4 0HJ
Tel: 01752 635000
Fax: 01752 227647
email: goswdc@eurobell.co.uk
Website: www.gosw.gov.uk

