

adva vision and strategy

2009-2011

"Domestic violence hurts everyone"



Home is where
the **hurt** is

National cost of domestic violence: **£23 billion** Devon cost of domestic violence: **over £60 million**

Introduction

This is adva's 2009-2011 Strategic Plan which sets out the vision for long-term development of domestic violence and abuse services in Devon. The strategy is focused on two areas: a) the role of statutory agencies in developing their mainstream responsibilities to domestic violence and abuse and b) the sustaining and further development of specialist domestic violence and abuse services via the adva partnership.

The adva partnership recognises that domestic violence and abuse is a crime that affects the safety and wellbeing of children and families. All social, geographical and cultural groups suffer. Home Office research indicates that there are 30,000 victims of domestic violence and abuse in Devon.

The major thrust of this strategy is to emphasise the need for long-term prevention through a family intervention approach focussing primarily on the needs of children and young people. In the long term domestic violence and abuse will only be eradicated by tackling it as a children and family health and wellbeing issue.

advā's vision

To increase the safety of families living with domestic violence and abuse, promote their health and wellbeing and empower children and young people to live lives free of violence.

advā's goals

In seeking to achieve this vision adva will implement the Government's National Delivery Plan for domestic violence and abuse. The following are our key objectives:

1. To increase the safety of those affected by domestic violence and abuse.
2. To promote the health and wellbeing of all those affected by domestic abuse
3. To empower children and young people to tackle domestic violence and abuse so they live lives free of violence.

advā believes the only way of achieving our vision and objectives is by working in conjunction with the Devon Strategic Partnership's Sustainable Community Strategy and all primary statutory agencies' visions and priorities.

The Strategy focuses on:

- An analysis of existing Devon Strategic Partnership and statutory agencies' visions and priorities and how domestic violence and abuse relates to them and what actions are needed to develop the breadth of approach required to tackle the issue
- Recognition that there will always be a need for community-based specialist services delivered outside the statutory sector and that these need permanent funding and further development.

Devon Strategic Partnership, DPT, PCT, DCC and Police visions & priorities 2008 – 2011

In analysing the Devon Strategic Partnership and its four primary agencies' priorities in relation to domestic violence and abuse the colour coding identifies how they relate to adva's goals:

- 1. To increase the safety of those affected by domestic violence and abuse
- 2. To promote the health and wellbeing of all those affected by domestic abuse
- 3. To empower children and young people to tackle dva so they live lives free of violence

VISION	DPT	PCT	DCC	Police	DSP
	To be a progressive organisation that inspires confidence in the people who use our services, our staff and our stakeholders	Our vision is to commission and provide excellent health services that are built around the patient, and to develop and deliver evidence-based approaches to keeping people healthy, particularly those with the greatest health needs	A county with safe, healthy and inclusive communities. A strong and diverse economy and a cherished environment.	To be a national top ten performing force. To be amongst the top ten performing Forces out of the 43 in England and Wales in order to provide the best possible police service to the people of Devon, Cornwall and the Isles of Scilly	We want Devon to be: England's greenest county with strong local communities that are prosperous and welcoming with an excellent quality of life and a sustainable future
AGENCY PRIORITIES	DPT	PCT	DCC	Police	DSP
	To put service users and their carers at the centre of all it does	Putting more emphasis on helping people to stay healthy	Giving Devon's children and young people the best possible start in life	Local Policing Plan 2008-2011 To be one of the 10 Forces nationally with the lowest levels of Serious Acquisitive Crime	Sustainable Community Strategy 2008 - 2011 A world class environment: Supporting our County's world class natural environment, our built environment and cultural heritage to improve the look and feel of the places where we live
		The Way Ahead	Devon Strategic Plan 2006-2011		

cont. over...

	To provide the best possible experience for the people who use services	Targeting extra support towards more deprived communities	Strengthening Devon's economy	To be one of the 10 Forces nationally with the lowest levels of Serious Violent Crime	Strong and inclusive communities: working to ensure strong, prosperous and inclusive communities with a sustainable and vibrant future
	To be recognised for the high quality services it provides	Helping every child and young person get the best start in life	Celebrating Devon's culture	To be one of the 10 Forces nationally with the highest Total Crime Sanction Detection Rate	A growing economy: creating the conditions to enable Devon to have a strong and growing economy, ensuring maximum opportunities are available for everyone to contribute to and benefit from it
	To make the best possible use of all its resources	Shifting more care into people's homes and local communities	Improving Devon's environment	To be one of the 10 Forces nationally with the highest percentage of victims who are satisfied with the overall service provided by the police	Homes and Housing: ensuring the availability and balance of appropriate housing
	To include service users, staff and partners in delivering, developing and improving services	Making a difference to caring for people with long term conditions or disabilities – and their carers	Promoting independence and choice for Devon's adults	To be one of the 10 Forces nationally with the highest percentage of victims of racist incidents satisfied with the overall service provided by the police	Inspiring Young People: inspiring our county's young people to achieve their best and supporting them in tackling the issues that concern them most
		Picking up mental health problems early on and keeping the focus on recovery and therapy		To be one of the 10 Forces nationally with the highest percentage of people who 'think the police in their area are doing a good job'	Health and Wellbeing: promoting health and personal wellbeing
		Ensuring that services in Devon match the very best nationally		To be one of the 10 Forces nationally with the highest percentage of victims who are satisfied with ease of contacting someone who could assist	A Safer Devon: tackling behaviour that intimidates, hurts or offends people in Devon

The following analysis looks at agencies' priorities related to adva's 3 goals and groups them into common themes.

1. To increase the safety of those affected by domestic violence and abuse

- Reducing the levels of serious violent crime and improve sanction detection rates (Police)
- Improve public and victim satisfaction, especially amongst minority groups, with the criminal justice system (Police)
- Tackling behaviour that intimidates, hurts or offends people in Devon (DSP)

DSP and Agency Priorities	Domestic violence target groups	National and local evidence of impact	Cost to services in Devon per annum	Actions to be taken by agencies
<p>Reducing the levels of serious violent crime and improve sanction detection rates (Police)</p> <p>Improve public and victim satisfaction, especially amongst minority groups, with the criminal justice system (Police)</p> <p>Tackling behaviour that intimidates, hurts or offends people in Devon (DSP)</p>	<p>Adult female victims</p> <p>Adult male victims</p> <p>Vulnerable (f&m) adults</p> <p>Perpetrators (m&f)</p> <p>Employees</p> <p>Those with learning & physical disability</p> <p>LGBT communities</p> <p>Children and Young People</p> <p>Black and ethnic minority communities including those experiencing honour-based violence</p>	<p>51% of all homicides are dva</p> <p>Cost of police investigation of dva incidents - 8,925 reported in 2007/8 @ £207 per incident</p> <p>Cost to CPS and Courts for SDVC</p> <p>Domestic violence and abuse violent crime offences 2007/8 = 2,607</p> <p>Cost of 600 MARAC cases per year @ £10,000 per case (based on CAADA average cost to agencies and society of a family that reaches MARAC status)</p> <p>20% of offenders in custody are identified as dva perpetrators</p> <p>25% of offenders serving community sentences are dva perpetrators</p>	<p>Average homicides in last 6 years 3 a year at cost per annum of £4,200,000</p> <p>£1,847,475</p> <p>Cost unknown</p> <p>Cost unknown</p> <p>£6,000,000</p>	<p>LCJB to manage and performance monitor SDVC and MARAC</p> <p>LSCB to manage and performance monitor children and family related aspects of MARAC</p> <p>Expansion of MARACs to take all agency referrals</p> <p>Establish Public Protection Units across Devon</p> <p>Improved data collection and monitoring of minority groups affected by dva</p> <p>Improve statutory services' sensitivity to minority group needs</p> <p>Consultation with victims, perpetrators and the public on dva service provision</p> <p>All LCJB partners to have a fully implemented employer and service commissioning dva policy</p>

2. To promote the health and wellbeing of all those affected by domestic abuse

- Promoting health and wellbeing including mental health (PCT, DSP)
- Targeting extra support on vulnerable communities (PCT, DSP)
- Promoting independence and choice for adults including availability of appropriate housing (DCC and DSP)
- Participation by all sectors of community in economic opportunity (DCC, DSP)

DSP and Agency Priorities	Domestic violence target groups	National and local evidence of impact	Cost to services in Devon	Actions to be taken by agencies
Promoting health and wellbeing including mental health (PCT, DSP)	Adult female victims Adult male victims Vulnerable (f&m) adults Perpetrators (m&f) Children and Young People Employees Those with learning & physical disability LGBT communities Homeless including those in refuge and emergency accommodation Pregnant women Non economically active victims Black and ethnic minority communities including those experiencing honour-based violence	3% of NHS expenditure is due to physical injury associated with dva (total NHS annual costs in Devon £956,903,000) 1.2% of A&E attendances are dva related - Devon annual rate is 135,834 @ £9,190 per serious wounding, £680 other injury 11% of visits to GP surgeries suffered dva - 107 GP surgeries in Devon, average 11,650 annual visits @ £121 each 20% of women mental health service users are currently experiencing dva - 9,391 women MH users in 2006/7 @ £332 per user per annum 11% homeless acceptances are dva related - 98 homeless acceptances in Devon 2006/7 @ £303 average per week for 6 weeks	£28,707,090 £3,744,952 (serious) + £831,300 (other) £16,591,581 £62,356 £178,164	Routine enquiry across health and social care services to identify the scale of dva within existing services Delivery of staff awareness programme on dva Training to be able to refer to MARAC process Identification of champions to drive dva issues within services Early identification of clients referred to services to identify those living with dva, from birth to older age Re-shaping of services to deal with the causes of dva so that those affected become socially, economically and culturally more active Engagement with specialist minority groups to make core services sensitive to the different ways dva is presented in these communities Expanding range of accommodation services Ensuring all DSP partners have employer policies and management training
Targeting extra support on vulnerable communities				
Promoting independence and choice for adults including availability of appropriate housing				
Participation by all sectors of community in economic opportunity				

3. To empower children and yp to tackle dva so they live lives free of violence

- Giving Devon's children and young people the best possible start in life (DCC & PCT)
- Inspiring Devon's young people to achieve their best and supporting them in tackling the issues that concern them most (DSP)

DSP and Agency Priorities	Domestic violence target groups	National and local evidence of impact	Cost to services in Devon	Actions to be taken by agencies
<p>Giving Devon's children and young people the best possible start in life (DCC & PCT)</p> <p>Inspiring Devon's young people to achieve their best and supporting them in tackling the issues that concern them most (DSP)</p>	<p>Parents Perpetrators (m & f) Children and Young People Youth Offenders Those with learning & physical disability LGBT communities Homeless including those in refuge and emergency accommodation Pregnant women Black and ethnic minority communities including those experiencing honour-based violence</p>	<p>35-55% of child protection case conferences report dva - 2006/7 382 case conferences in Devon @ £600 average per case</p> <p>55% of cyp in care are from dva households - 590 in care at any one point @ £500 per week</p> <p>26% of children in need for whom dva is a factor - 3,970 @ £120 per child per week</p> <p>cyp in MARAC in a year - 300 family cases per annum</p> <p>number of cyp born in Devon per year (2006)</p> <p>225 cyp in Devon's three dva refuges per year</p> <p>2,339 adult women victims supported by Women's Aid in 2007/8; 1,733 cyp live with them</p>	<p>£130,140</p> <p>£162,250 per week</p> <p>£123,864 per week</p> <p>Cost unknown</p> <p>6,802</p> <p>£103,700</p>	<p>Assess dva at Common Assessment Framework stage across all sectors</p> <p>LSCB agree and monitor action plan of dva (from LSCB sub-group):</p> <ul style="list-style-type: none"> • Improve the link between MARAC and cases involving cyp • Improve support services to cyp affected by dva • Ensure parenting strategy encompasses dealing with dva • Improve response to 16-18 year olds who are victims of dva • Improve the information flow to schools and educational / youth establishments about cyp living with dva <p>Strategic coordination of routine enquiry in midwifery and health visiting</p> <p>All LSCB partners to have a fully implemented dva employer and service commissioning policy</p> <p>All professionals dealing with children and families to attain minimum of adva level 2 'Children and Young People's' validation</p>

Impact of domestic violence and abuse and related services

This model demonstrates a hierarchy of the increasing levels of serious impact that arise from domestic violence and abuse. It also links to the increased costs associated with the management of the impact of domestic abuse within the three priority areas, health and wellbeing, violence and children and young people. It shows the most serious impacts can be heart attack and failure, homicide and child death. The services listed under each theme are those that will be engaged in dealing with the consequences of domestic violence and abuse although for most this will not be explicit in their strategies, policies and practices. The model attempts to demonstrate that, despite this, domestic violence and abuse does have an impact on agency mainstream activity.



Funding sources for adva partnership

adva has been funded from a variety of sources to resource the service depicted under the umbrella (p.9). The table below outlines the detailed funding sources and costings, as known, for 2009-10. It shows the potential funding gap between income and essential expenditure, which is a fundamental problem for our longer-term strategy, outlined below.

Future options 2009 onwards

Funding 2009-10	Services	Service Cost rounded up at 2008-9 costs	Service need and impact
DCC £890,000	Outreach	290,000	Provides service to 2,000 women a year. Majority not reported to police
CYPS £5,000	MARAC idva	145,000	Cannot operate MARAC without independent advocates
SDP £116,000	SDVC idva	109,000	Cannot operate SDVCs without independent advocates
Police £100,000	Children in refuge	76,000	220 children a year living in refuge, at very high risk
PCT £43,000	Children in Community	130,000	Children linked to REPAIR or MARAC high risk in community
Probation £5,000	Pattern Changing	55,000	Assisting women victims to integrate back into the community
District Councils £40,000	Children and young people in SAFE	10,000	High risk 16-25 year olds safety & development plans (number)
Home Office £40,000	REPAIR (women's support)	35,000	Core component of voluntary community programme for male perpetrators
Total £1,239,000	REPAIR (men's support)	105,000	Community-based service for male perpetrators; necessary to support employer policies in DCC, PCT, Police
	Training	70,000	Trains 1,500 agency staff a year. Core to early identification/risk-assessment
	Awareness Raising and Marketing	18,000	Awareness materials, public media campaigns & publicity & awareness week
	Sexual Abuse Line	10,000	Contribution to part-funded sexual abuse helpline linked to dva
	Male Victims service	39,000	Gender equal service for male victims
	Partnership running costs: Running costs £21,000 (printing, meetings, etc)	123,000	General running of adva partnership, publicity materials, printing, meetings, stationery
	adva team (co-ordinator + project support) £71,000		Staffing additional to core DCC staff to manage volume of work
	Seeds Devon	10,000	Survivor consultation group to inform agency policy & practice
	Diversity support	5,000	Developing support to marginalised groups
	Data System (modus)	9,000	Licence and maintenance of modus database system
		1,239,000	

Vision for the future

Adva has established a firm base of core services. This responds to the Government's National Co-ordinated Community Model and the emerging Devon and Cornwall Peninsula Vision. In moving forward there are a number of aspirations and challenges that the following strategy is aiming to achieve:

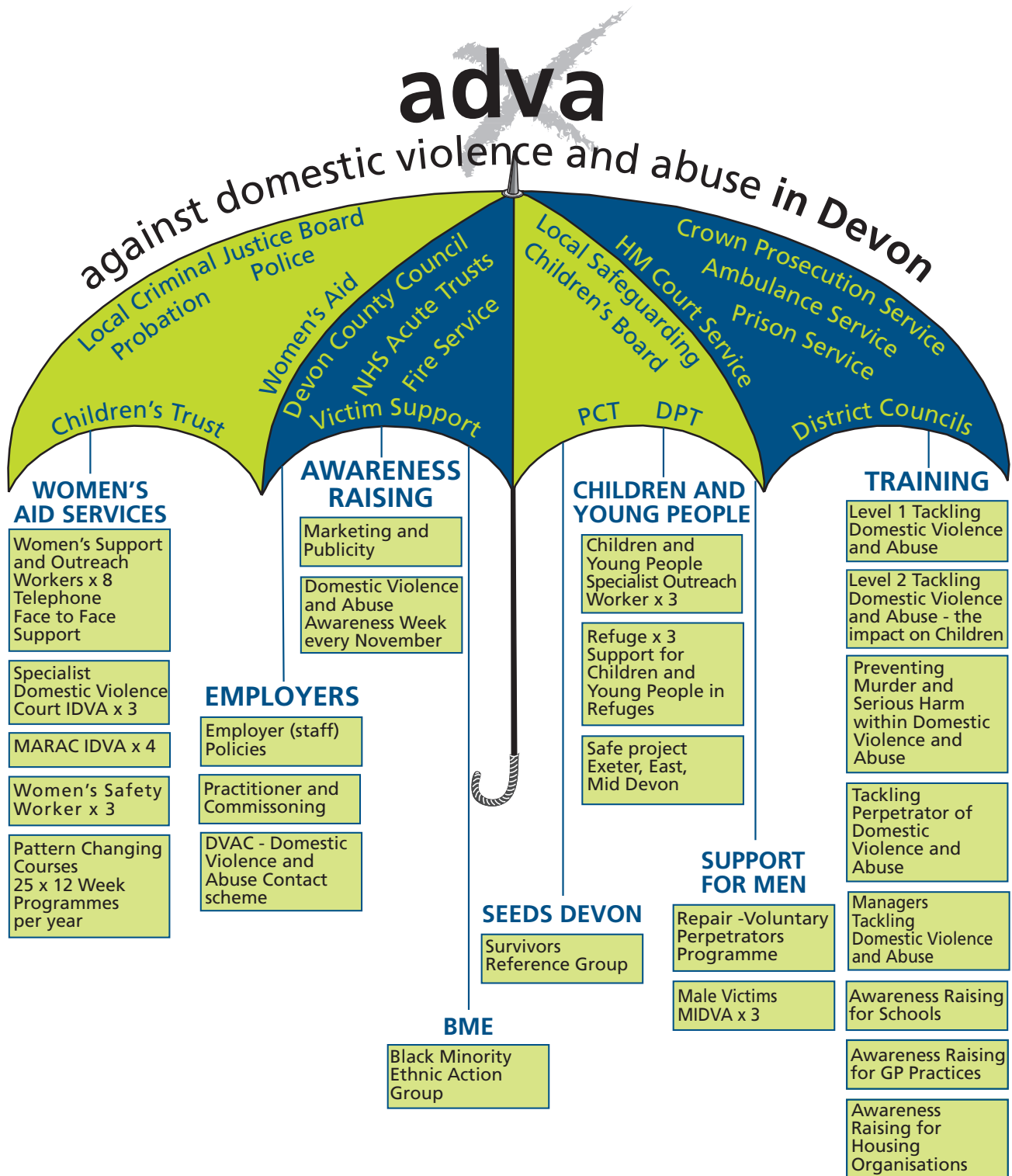
Action	Responsible agency/ies	Timescale
Securing sustainable funding to deliver core services at cost of £1.3m per annum (08-09 prices)	Primary Care Trust; Devon Partnership Trust; Police and Local Authorities	By April 2009
Inculcating responses to domestic violence and abuse within statutory agencies' vision, policies and practices	Primary Care Trust; Devon Partnership Trust; RD&E Trust; NHS Acute Trusts; Police; Local Authorities; CAFCASS; Courts; CPS; Prison; Probation; Fire and Ambulance Services; Criminal Justice Board; Safeguarding Children's Board; Safeguarding Adult's Board; Devon Strategic Partnership; Children's Trust;	By April 2010
Ensure all adva partner agencies have a domestic violence and abuse Employer Policy and implementation plan	All above	By April 2010
Evaluate the potential gains from establishing a Family Justice Centre in Devon	adva	By October 2009

Glossary of Terms

ABH	Actual bodily harm	ISB	Invest to Save Budget
adva	Against Domestic Violence and Abuse	LCJB	Local Criminal Justice Board
CAADA	Co-ordinated Action Against Domestic Abuse	LSCB	Local Safeguarding Children Board
CAFCASS	Children & Family Court Advisory & Support Service	LGBT	Lesbian, Gay, Bisexual and Transsexual/ Transgender
CAMHS	Child & Adolescent Mental Health Services	LPSA	Local Public Service Agreement
CPS	Crown Prosecution Service	MALE	Men's Advice Line and Enquiries
CYP	Children & Young People	MARAC	Multi Agency Risk Assessment Conference
CYPS	Children & Young People's Service	MIDVA	Male Independent Domestic Violence Adviser
DAO	Domestic Abuse Officer	NHS	National Health Service
DCC	Devon County Council	PCT	Primary Care Trust
DPT	Devon Partnership Trust	REPAIR	Resolve to End the Perpetration of Abuse in Relationships
DSP	Devon Strategic Partnership	SAFE	Young Women's Project
DVA	Domestic Violence and Abuse	SARC	Sexual Abuse Referral Centre
DVAC	Domestic Violence and Abuse Contact	SDP	Safer Devon Partnership
GBH	Grievous bodily harm	SDVC	Specialist Domestic Violence Court
GP	General Practitioner	YOT	Youth Offending Team
IDVA	Independent Domestic Violence Adviser		

adva-funded Domestic Violence and Abuse Services in Devon

This is a graphical representation of the core specialist community-based support services in Devon, funded and commissioned by the adva partnership.



www.adva.org.uk

01392 382233

Published March 2009