

# The Next Step

How to apply for your child's transfer to  
Secondary Education in September 2015



**Don't be late for school:** Closing date for submissions is 31 October 2014

# Contents

A letter from Jennie Stephens, Strategic Director, People	1
Transferring to secondary school - The Next Step	2
choosing a school: choice and preference	2
co-ordinated admissions	2
types of schools - who is responsible for admission arrangements and decisions?	2
Three Easy Steps	3
You must apply for a school place	4
Applying for a school place	5
how do you apply?	5
Issues to consider before making an application	5
residency	5
moving house	5
children in care and children formerly in care	5
exceptional need	6
designated area	6
children of staff	6
sibling priority	6
faith priority	6
selective schools	6
aptitude	6
multiple birth siblings	6
children of UK service personnel	7
parents with shared responsibility	7
waiting lists	7
information on the application form	7
what will we do with your application?	7
academy and foundation conversions	8
School Admissions Code	8
The Department for Education	8
The Education Funding Agency	8
Children's Education Advisory Service	8
The Office of the Schools' Adjudicator	8
Equally ranked preferences and the application process	9
published admission numbers (PAN)	9
which schools can you apply for?	9
will your preference be met?	9
what if a school is oversubscribed?	9
what if a school is NOT oversubscribed?	10
what if you name a school twice?	10
what if you only name one school?	10
what if you just want your local school?	10
what if you don't apply?	10

what if you don't want a particular school?	10
be honest in your application	10
reasons for your preference	10
address and sibling changes	10
what if you change your mind?	11
what if your application is late?	11
- after 31 October but before 9 February	11
- after 9 February	11
- after 6 April	11
- after 31 August	11
when will you know the outcome of your application?	12
what to do when you receive an offer	12
what to do if your application is refused - waiting lists and the right of appeal	12
Free, Independent advice	12
The Advisory Centre for Education	12
The Devon Parent Partnership Service	12
School Transport	13
Other Local Authority areas	15
Statements of Special Educational Need and Education, Health and Care Plans	16
Early or Late Transfer to secondary education	16
Other information	17
In-Year Admissions	17
Fair Access Protocol for In-Year Admissions	17
help with school meals	17
the pupil premium	17
school uniform	18
private fostering arrangements	18
insurance	18
Home-School Agreements	18
religion and belief	18
contribution to school funds and trips	18
Glossary and Definitions	19
2015-16 Oversubscription Criteria	21
<b>The Devon Common Application Form</b>	<b>24</b>
2015-16 Oversubscription Criteria continued	28
Individual school information	34
Timeline	51
Location map of secondary schools	back cover

# A Letter from Jennie Stephens, Strategic Director, People



**Jennie Stephens**  
Strategic Director, People  
Devon County Council

Dear parent or carer,

Secondary school is the next important step in your child's life. In Devon we want to help your child achieve their full potential. All of our secondary schools are working hard to offer pupils a full and rounded curriculum, as well as to help them develop the skills they will need to move on after secondary school.

As a parent you have a significant role to play in helping your child do well and we are keen to work with you, to try and ensure that secondary school is a positive and successful experience. No doubt you will be thinking about the school you would like your child to attend. He or she may already have an awareness of secondary schools through links with the primary or junior school or from older brothers and sisters who attend. You may have talked with your child about what moving onto secondary school means.

The Next Step on the journey is choosing the right school place for your child. This booklet is designed to help you do that and to explain the process for applying for admission to a secondary school.

If you have any questions about the admissions process please contact the Education Helpline on **0345 155 1019**.

Don't forget, you can apply online for a school place until 31 October at **[www.devon.gov.uk/admissionsonline](http://www.devon.gov.uk/admissionsonline)**

## Dates for your diary

For children in Devon state-funded schools, details on how to apply will be sent to you during **the first week in September**. If you have not received this, please contact your child's school or the Admissions Team.

You must apply for a school place. You can apply online **or** return the Common Application Form to your child's primary school **or** direct to the Admissions Team by **31 October**. **Applications after this will be considered late** unless you can show that you were unable to apply on time

We will email you **or** write to you to tell you about the school place we can offer your child on **2 March 2015**.

# Transferring to secondary school - The Next Step

There are two types of admission to a school:

1. **Normal entry at a school**, when children start at that school for the first time:
  - First, Infant and Primary schools – the Reception year. See the *First Step* booklet.
  - Junior schools - Year 3. See the *Junior Step*.
  - Middle schools (and High schools) - Year 5 (and Year 8). See the *Middle Step*.
  - Secondary schools - Year 7. Information in the *Next Step*.
  - Studio Schools and University Technical Colleges - Year 9 or 10. See the *Step Ahead*.
  - Sixth Forms - Year 12. See the *Sixth Form Guide*.
2. **In-year admissions**. This is either when a child starts in a school part way through the school year or in September in a Year Group that isn't the normal entry for that school. See the *In-Year Admissions Guide*.

The Next Step is Devon's composite prospectus and is published to tell you about normal round admissions to secondary school. Each prospectus is at [www.devon.gov.uk/admissions](http://www.devon.gov.uk/admissions)

## Choosing a school: choice and preference

As a parent of a child living in Devon, you can name up to three different schools on our common application form in the order you would most like your child to attend. Your most preferred school would be Preference 1. You don't have to name three schools. When you do this, you are expressing a preference for the school you wish your child to attend. *Preference* is not the same as *choice*: you cannot choose a particular school. We will always try to provide a place according to your preference but some schools will have more applications for admissions than the number of places available. Some applications will be refused and we advise any parent to consider putting more than one school, including one designated for your child's home address (the catchment school).

## Co-ordinated Admissions

Local authorities are legally required to make the admissions process fairer for children and families and to make sure that every child who needs a secondary school place for September is offered one, but only one, school place. To do this, we operate a co-ordinated admissions scheme which requires all schools to work with us and enable you to apply for an appropriate school. You can view our scheme at [www.devon.gov.uk/admissionarrangements](http://www.devon.gov.uk/admissionarrangements).

## Types of Schools - who is responsible for admissions arrangements and decisions?

- C** community non-denominational schools - Devon County Council
- VC** voluntary controlled schools - Devon County Council
- VA** voluntary aided church schools - the school governing body
- F** foundation, non-denominational schools - the school governing body
- A** academy schools - the academy trust

All schools operate within the terms of the law, their own published admissions policy and Devon's co-ordinated admissions scheme.

# Three Easy Steps

- 1**      **Research**
  - read this booklet
  - read the individual school information (from page 34)
  - find out what the schools have to offer your child
  - if possible, visit schools you are interested in
  - know which school is designated for your address
  - understand what equally ranked preferences means (see page 9)
  - be aware of the school transport policy (see page 13)
  
- 2**      **Apply**
  - complete a local authority common application form
  - apply at **[www.devon.gov.uk/admissionsonline](http://www.devon.gov.uk/admissionsonline)** or on the form in the centre of this booklet
  - consider completing a Supplementary Information Form if there is one for the school
  - express a preference for 1, 2 or 3 schools
  - consider naming your designated school as one of your preferences
  - provide accurate and complete information
  - if you do not apply, the schools you prefer may be filled
  
- 3**      **Apply on time**
  - the closing date is **31 October**
  - you cannot apply online after the closing date
  - if you use a paper form, hand it in to your child's current school or post it to the Admissions Team
  - if your application is late, places at the schools you prefer may already have been filled – no places are held in reserve
  - if your application is late you may be responsible for transport to and from a school further away from your home

Information was correct at the time of publishing the hard copy of the Next Step. This is also a dynamic document at **[www.devon.gov.uk/admissions](http://www.devon.gov.uk/admissions)** and will be updated as new information is available or changes are necessary. The information relates to admissions in 2015-16. There may be changes to the details shown to correct errors, update entries or due to developments in government policy and determinations of the Office of the Schools' Adjudicator.

## You must apply for a school place

- even if you have another child already on roll at the school
- even if your child attends a linked primary or junior school
- even if it is the school designated for your address

No places are held in reserve in case you are not offered a place at another school, change your mind or apply late.

If you aren't successful with any application, you can't assume that there will still be a vacancy at your designated school: it may be full. We advise every parent to consider naming a designated school as one of the preferences.

If you don't put a particular school on your form, it won't be considered for you unless it is the nearest one to home with a vacancy after every application has been dealt with.

**When we ask you to tell us about your circumstances, that must be on your application form, on a school Supplementary Information Form or separately in writing.**

### Do

- Make sure that your child is resident in the Devon County Council area (not Torbay or Plymouth)
- Complete a Devon common application form at [www.devon.gov.uk/admissionsonline](http://www.devon.gov.uk/admissionsonline) and submit by the closing date of **31 October**.
- If you cannot apply online, complete a paper Common Application Form and return it by the closing date of **31 October**.
- Express a preference for 1, 2 or 3 schools.
- Consider how you will get your child to school.
- Consider naming your designated school as one of the preferences.
- Tell us in writing if you have another child already at the school or new to the school.
- Provide evidence if you feel there are exceptional reasons for your preference; why you feel a place must be made available at a specific school.
- Tell us in writing if your circumstances change.
- Tell us in writing if you know your child's address is going to change before September.
- Check whether any school you are interested in asks you to complete a Supplementary Information Form.
- Return your Supplementary Information Form to the school itself by **31 October**.

### Don't

- Assume that you don't need to apply for your designated school – you must tell us you want a place.
- Assume that you don't need to apply for the school where you already have other children – you must tell us you want a place.
- Name the same school three times – this will be considered as one preference.
- Name a school if you don't want a place there.

## Applying for a school place

The application process enables parents to express a preference for any secondary school in Devon or elsewhere and we will do our best to meet your preference. You may want to look at information which has been published about schools to help you make your decision.

Each school will have a website and prospectus and you can get a copy of this direct from the school. We would advise you do this for any school you are considering as one of your preferences. You may also want to know some specific information about a school - there are some details about all Devon secondary schools from page 34.

You can look at published reports of recent school inspections at [www.ofsted.gov.uk](http://www.ofsted.gov.uk)

You can contact the Department for Education on 0870 000 2288 to view school achievement and attainment tables or you can visit [www.education.gov.uk/performanceables](http://www.education.gov.uk/performanceables)

### How do you apply?

At [www.devon.gov.uk/admissionsonline](http://www.devon.gov.uk/admissionsonline) or you can use the paper common application form in the Next Step booklet. In recent years, over 95% of applications have been made online.

You can change your application at any time up to **31 October**. If you apply online, you can view your offer online on **2 March**. You can apply from home 24 hours a day and you'll receive confirmation that your application has been received.

To apply online, you will be asked to create an account which is protected by a password. When you submit an application, we will acknowledge it by email. If you return to your online account to make any changes, **this will automatically withdraw your application. You would have to press the submit button again to ensure this new application is received by us.** You will get another email to confirm we have received this new application.

Please note that we will only discuss your application with you or someone you write to tell us we can discuss it with.

## Issues to consider before making an application

### Residency

Applications are considered on the basis of the address from which a child will be attending school. This is very important when a school is oversubscribed as a child's priority for a place is affected by where he or she lives.

Proof of address and residency may be required by the admissions authority for a school. Offers can be withdrawn if there has been a fraudulent or intentionally misleading application or where there has been an error in the application and allocation process.

### Moving House

You must inform us immediately of a change of address, even if details of a future change of residency were included on the application form. We may require supporting evidence to show that the place of residency has changed, documents required are tenancy agreements (if applicable), council tax and utility bills, child tax credit or child benefit documents and any other information considered relevant to the application, including the disposal of the previous home. The decision whether a new address is accepted lies with the admission authority for the school. It is important to keep us informed, including where you believe that you will be moving.

### Children in Care and Children formerly in Care

Every school must give the highest priority for admission to children who are looked after by a local authority or who were looked after before either being adopted or made the subject of a residency or special guardianship order. If you are an adoptive parent, you don't have to mention this on an application form if you don't wish to.



### **Exceptional Need**

For most schools in Devon, priority is given if a parent can demonstrate that there is an exceptional social or medical need to attend that school - and specifically that school. Your child or family may face very challenging circumstances but for there to be admissions priority, the circumstances must mean that only that school can meet your child's needs. Every request for priority under exceptional need will be considered by the admission authority for the school on its own merits. However, you should be aware that a wish for a child to attend a school because his or her friends are expected to go there is NOT considered to be an exceptional need. Nor would the convenience of transport or general child care arrangements generally be sufficient. Exceptional need priority is agreed only in a small number of cases across the county. It is likely that successful requests will have independent supporting evidence which must indicate why a particular school is required, not simply describe the medical or social need. Where the admission authority for a school agrees that there is an exceptional need for admission, the application is prioritised - it is not a guarantee of admission.

### **Designated area**

Almost every address in Devon has a designated primary and secondary school. A small number have more than one designated school. Children living in the designated area for a school - also called a catchment area - will have priority for admissions over other children. This does not mean that they are guaranteed admission but generally an application will be successful if submitted on time.

Where an address is in the designated area for a school and is further than the walking distance of two miles for primary children and three miles for secondary children, there is an entitlement to free transport. This applies only to one primary and one secondary school. Where there is more than one, we will nominate one of the schools for entitlement to free transport on designated school grounds.

### **Children of staff**

Some schools give priority to the children of staff working there. This is not a guarantee of a place.

### **Sibling priority**

Most schools give priority to children who have a brother or sister at the school or one with close links to it. This is not a guarantee of a place.

### **Faith priority**

Voluntary aided and some academy schools have a formal faith character and can prioritise applicants where there is evidence of a faith. Usually this is where the parent can show that they regularly attend a particular church or place of worship and have been doing so for a minimum period of time. You can do this by completing a school Supplementary Information Form and returning it to the school.

### **Selective schools**

You have the option to seek a place for your child at a selective school. To be eligible for admission, your child would have to be successful in an entrance test called the Eleven Plus (11+). In Devon, there is one selective school, Colyton Grammar School. Otherwise, there are grammar schools in Plymouth and Torbay.

So that you have a reasonable idea of whether an application for a place would be successful, the 11+ tests are held in September. This means the tests can be marked and the schools themselves will tell you how your child performed by mid-October. This is not an offer of a place. Testing before preference means that you should start to look at these schools as an option as soon as possible - most parents will have done so in Year 5.

### **Aptitude**

St Luke's Sports and Science College admits up to 10% of its intake where children can demonstrate an aptitude for sports. This means the children can benefit from the sports provision there, not simply that they are exceptionally gifted in sports. The assessments for sports aptitude are held in September, around the same time as 11+ tests.

The Woodroffe School admits according to an aptitude in arts

### **Multiple birth siblings**

We cannot guarantee that places will be available for twins (or triplets). If one twin can be offered the final place, we will try to offer the other twin but it is possible that a school can't admit more than its PAN. If this is the case, it will be for you to decide whether to accept one place or to seek places for both twins elsewhere.

### **Children of UK service personnel**

Places will be allocated in advance of the family arriving in the area for children of UK service personnel. The application must be accompanied by an official government letter which declares a relocation date and a Unit postal address or quartering area address. This will be used in considering the application against a school's oversubscription criteria. There is no additional priority for service children.

### **Parents with shared responsibility**

Only one home address will be accepted for a child. Each admission authority will make a decision on what is the child's home address, if necessary, according to its own admissions policy. This may be according to a court order. Schools will consider all information submitted by either parent.

Very rarely, two parents submit applications for different schools. This can be very upsetting for children and we strongly urge parents to reach agreement in the best interests of the child. Where this does not happen and, in the absence of a court order, a place will not be held open at another school once a child has physically started at school.

Where a parent who is not the applicant wishes to know which school has been allocated, we would expect that parent to approach the applicant for information.

### **Waiting Lists**

Waiting lists are kept in case places arise at schools which were full. They are kept in priority

order using the oversubscription criteria relevant to the school. **This means your position could go down as well as up.** You should be aware that children who arrive after **31 August** and who don't have a school place will take priority for admission over children on the waiting list.

If your circumstances change after the allocation of places, you must inform us in writing. This includes children appealing for a place where the home address changes or there is a new preference.

### **Information on the application form**

It is your responsibility to provide accurate and up-to-date information on your application. You should find out about the school you are interested in and the information required. This will include telling us about brothers and sisters at a school where this would give priority for admission, telling us if your child has a Statement of Special Educational Needs or an Education, Health and Care Plan or telling us if your child is in the Care of a Local Authority or was in Care. For some schools, you may also need to complete a Supplementary Information Form (a SIF) if you want your application to be prioritised on faith grounds or because you or your partner is a member of staff at the school.

Any additional information for consideration should be included with the application.

### **What will we do with your application?**

We will verify the details on your application with data we already hold. If we can't match the details, we may contact you for clarification. If you apply online, using the UID (unique identification) number we allocate for your child, the details will be correct unless there has been a very recent change of address or name.

Details of preferences for Devon voluntary aided, foundation, academy and free schools will be passed to them, together with supporting information, for their admission authorities to consider. They will rank all preferences they receive according to their own oversubscription

criteria. Details of preferences for schools elsewhere in England will be passed to the local authority in those areas for consideration by the relevant admission authorities there.

Schools will not be informed whether they were your first, second or third preference as that information is not relevant to their ranking. This is what is meant by **equally ranked preferences**.

We will rank the preferences for Devon community and voluntary controlled schools.

When they have been ranked by the relevant admission authorities, we will receive information back from the schools and other local authorities. We will use this ranking to process applications so that a place is offered for each child: at the school able to offer a place or at an alternative if no preference could be met. Where more than one preference can be met for a child, a place will be offered at the one school that could offer a place and was most preferred by the parent.

### **Academy and Foundation conversions**

A number of Devon schools have converted to academy status; others may do so. New academies or free schools may open. Other schools have converted to become foundation schools with a co-operative trust. They are schools maintained by the LA but with responsibility for their own admission arrangements.

Academies and foundation schools are legally bound to manage admissions fairly in the same way as all other state-funded schools.

### **School Admissions Code**

The management of school admissions for 2015-16 comes under the statutory requirements of the government's **School Admissions Code 2012**. In addition, the **School Admissions Appeals Code 2012** provides statutory guidance on the appeals process. Both are available online from the Department for Education at **www.education.gov.uk/publications**

The government will undertake a consultation on changes to the Admissions Code up to 29 September 2014. A new Code will come into force in December 2014 and will impact on admission arrangements for the 2016-17 academic year. Admissions policies already determined for 2015-16 will be unaffected.

### **The Department for Education**

is responsible for education and children's services in England. The DfE is a ministerial department, supported by nine agencies and public bodies.

### **The Education Funding Agency**

is an executive agency of the DfE, managing funding to support all state-provided education. The EFA has a role in dealing with complaints about academies.

### **Children's Education Advisory Service**

is a service organisation funded by the Ministry of Defence. It was established to provide information and support to service families and eligible MOD civilians on all aspects of the education of their children in the UK and overseas.

### **The Office of the Schools' Adjudicator**

Where a local authority, parent or other interested party believes that an admissions policy is unfair and breaches the requirements of the Admissions Code or other relevant legislation, an objection may be submitted to the Office of the Schools' Adjudicator. Decisions of the Adjudicator are binding.

## Equally ranked preferences and the application process

All preferences will be considered on the basis of equal ranking. This means that the schools you put on your application form will be considered without reference to whether you ranked them first, second or third. If you could be offered a place at more than one of your preferences your offer will be for the school you ranked the highest that is able to offer a place. The co-ordinated admissions process provides a way of ensuring that, as far as it is practical, every parent living in a local authority area who has applied receives a single offer of a school place on the same day.

Admission authorities will not know your order of preference. This is because they don't need to know to reach a decision so you can be confident that your application for a school further away from home will not put at risk your application for another school, perhaps your designated school.

You should apply for schools in the order you would most like a place.

### **Published Admission Numbers (PANs)**

All schools must have a PAN for their normal intake year. This is the number of places planned for at that school for this intake. The PAN is the number of places when the school believes it is full. The PANs for each secondary school are listed in this booklet. This is the minimum number of places that will be allocated to the Year 7 class for September if there are enough applications.

If there are more applications and the school believes it could, for instance, reorganise and admit another class, the PAN could be increased. The school must be satisfied that it has the resources to do so and inform us in time to amend the allocation process.

We will use the PANs and the ranked list of applications for each school in the process of allocating a place for each child. If we are unable to meet any preference for a Devon child, we will allocate a place at the school designated for his or her address (but only if there is a vacancy

remaining there) or at the nearest school to home with a vacancy. We may liaise with our neighbouring local authorities if the nearest alternative is outside Devon.

If your child doesn't live in Devon and we can't meet your preferences, we will not offer an alternative school. The responsibility to do that lies with whichever is your child's home local authority.

### **Which schools can you apply for?**

You can apply for any state-funded school in England. This includes community, voluntary controlled, voluntary aided, foundation, academy and free schools.

You cannot apply for a school outside of England. You cannot apply for an independent (private) school. If you would like places at any school other than an English state-funded school, you must contact the school or relevant body directly.

### **Will your preference be met?**

Your preference will be met, unless meeting your preference would 'prejudice the provision of efficient education or the efficient use of resources'. That is the legal reason for an application being refused.

As long as there are places available at a school, preferences will be met. For many schools, more applications will be received than the number of places available. If so, applications are prioritised on the basis of the school's published oversubscription criteria, details of which are included in this booklet, from page 21.

### **What if a school is oversubscribed?**

If a school has more applications than places, the admission authority will operate its published oversubscription criteria to prioritise applications. Children in care, those who have siblings at a school, children who live in the school's catchment area and for some schools, children who can satisfy faith criteria will have a higher priority. It matters that the information in your application is accurate and up-to-date.

### **What if a school is NOT oversubscribed?**

Schools rank their applications but if there are fewer (or the same number of) applications than places available its oversubscription criteria will not be used and no applicant requiring a place will be refused. You won't be offered a place, however, if another school you ranked higher can also offer a place.

If your preferred school is undersubscribed, your child's address doesn't matter - though of course you must be able to get your child to and from school.

### **What if you name a school twice?**

You should not write the same school down more than once – this will count as one preference and it means you may miss out on another school you may have preferred over the school you are offered.

### **What if you only name one school?**

If you only name one school and it can't offer you a place, we will allocate a place at your designated school or nearest school with a vacancy after other children have been allocated. This may be at a school you did not want so, to increase your chances of being allocated a place at a school you would like, we recommend that you name more than one preference. Only putting one preference will not affect whether a place can be allocated there.

### **What if you just want your local school?**

We won't assume that you want a place at the school designated for your address or the school your other children have attended. It may be that you have other plans for your child's education or are moving away from the area so you must make an application.

### **What if you don't apply?**

If you don't make an application for your child, so long as he or she is known to the School Admissions Team, you will be offered a place at the school designated for your address or, if that is full, at the closest school to your home address with a vacancy. You should not rely on this process allocating the school you want.

### **What if you don't want a particular school?**

You shouldn't name a school if you don't want a place there. If we can't offer you a place at one of your preferences, the school we offer might be one you actually didn't want.

**No places are held in reserve. Where a place is offered at a school further away than your designated school, you may be responsible getting your child to and from school.**

### **Be honest in your application**

When you apply you need to make sure that the information you give is complete and accurate. If there is clear evidence that a parent has given fraudulent or misleading information, particularly to gain an advantage over others and if the correct information would have meant they'd be refused a place in a particular school **the offer will be withdrawn.**

Places have been withdrawn in the past – please be aware of this when completing and signing the application form.

Places are offered on the basis of the address from which your child is to attend school. This may be different to the address your child lived at when the application was considered.

If your circumstances change during the process or if you know your circumstances are going to change (for example, you move house or know you will be moving house before your child starts at the school) you must tell us in writing. If we or the school are unable to get in touch with you, your school place may have to be offered to another child. If you decide that you no longer require a place that we have offered, please let us know in writing as soon as possible.

### **Reasons for your preference**

There is space on the form to tell us about the reasons for your preference. This doesn't mean the decision whether a place can be offered will be affected - you must show that there is an exceptional need for that to happen.

### Address and Sibling changes

We will only consider a new address you tell us about if you provide evidence of the move. We will confirm with you when the new address has been accepted. Evidence may not be required where the school is undersubscribed or where your new address makes your child a lower priority for admission (further away from the school or outside a designated area).

If you have another child who is offered a place at the school after the closing date for applications but before applications are processed on **9 February** and you tell us about it in writing, he or she will be counted as a sibling for admissions priority purposes in this application process. After the first offers, siblings will count once they are on roll.

It is your responsibility to tell us in writing about **all** changes of circumstances, including but not limited to, siblings and addresses.

### What if you change your mind?

If you change your mind about the schools you prefer or the order of your preferences, you should let us know immediately. If it is before the deadline for submitting applications on **31 October**, you can complete a fresh application with your new preferences and your original application will be disregarded. Please make sure that the same person signs a fresh application. If it is after this, any change of preference or new request may be considered at a second admission round on **6 April**. It is very likely that some schools will be full at this stage and we may not be able to offer you the place you want.

### What if your application is late?

Late applications will receive the offer of a school place but not at the expense of an application which was on time or considered to be on time. Unless you can demonstrate that you were unable to apply by **31 October** - for example, you moved house or there was an illness or other circumstance which prevented you from applying on time, your application will be considered as late. Where a change of

preference is as a result of updated information about a new school in Devon, it will be accepted as timely.

All children whose applications were on time will be allocated a school place before late applications. It may be that your local or designated school has been filled.

**No places are held in reserve.** Where a place is offered at a school further away than your designated school, you may be responsible for the cost of getting your child to and from school. Please make sure that you submit your application **by 31 October**.

### Application after 31 October but before 9 February:

- a. if your reason is accepted by the admissions authority for the school, your application is on-time - it will be considered alongside other applications and a place offered on **2 March**.
- b. if your reason is not accepted by the admissions authority for the school, your application is late - it will be considered after on-time applications and a place offered on **2 March**.

### Application after 9 February:

No further applications or changes of preference will be accepted for inclusion in the first round of allocations on **2 March**. It may not be possible to take into account changes in circumstances. Late applications will go forward alongside all others pending to a second round of allocations on **6 April**. All applications at the second round will be considered together.

### Application after 6 April:

Will be processed as they are received. Places will be offered when there are vacancies or the child's name will be added to the waiting list order of the school's own oversubscription order (see from page 21 for details).

### Application after 31 August:

Will be considered as in-year admissions.

### **When will you know the outcome of your application?**

For Devon-resident children, we will advise you about the secondary school place offered for your child. We will offer one place. The letter will be posted by second class post on **2 March** or, if you apply online, you will receive an email on **2 March**. It is your responsibility to keep your email address updated. You can also log into your online account on **2 March** to find out which school has been offered.

Only applications submitted using the online facility will receive an offer by email.

### **What to do when you receive an offer**

If we have met your preference for a school, we will assume that the offer is accepted by you. We do not expect you to write to tell us you accept it. The school will be in contact with you shortly after the offer is made and all future contact should be between you and the school.

If you do not wish to accept an offer - either because your circumstances have changed or you are unhappy with the alternative offer we have made, please confirm this in writing either to the School Admissions Team or the school.

### **What to do if your application is refused - waiting lists and the right of appeal**

If you have been refused a place, your child's name will be placed on a waiting list and you have the right of appeal to an Admissions Appeal Panel, independent of the admissions authority. When we inform you of your offer, we will explain how the appeals process works. If you are refused a place, you can also make additional preferences. If you appeal for a place at a school, the offer we have made is not affected - you do not risk that place on the grounds that you have appealed elsewhere.

If you are refused a place at Colyton Grammar School, Steiner Academy Exeter or a school in another LA area you will need to contact the school or the admissions authority to find out about their appeals process.

There will be a second round of offers taking place on **6 April**. New applications and changes of preference which were received after the processing date will be considered alongside children on waiting lists. All applications will be considered as if they were new applications.

After **6 April**, places will be offered from the waiting list as vacancies arise.

## **Free, Independent advice**

### **The Advisory Centre for Education (ACE)**

This is a charity which offers information about state education in England for parents of school-age children. Information booklets can be ordered at [www.ace-ed.org.uk](http://www.ace-ed.org.uk). You can call free on **0808 800 5793**, or text AskACE on **68808**.

### **The Devon Parent Partnership Service**

This is a local, impartial, free and confidential service for parents and carers, children and young people 0-25 years old regarding Special Educational Needs and Disability. If you or your child receive SEN Support, have a Statement of SEN or an EHC Plan, they can provide you with information, advice and support about admissions and transition between schools. They can help you to understand your options, talk to you about the admissions process, help you to find the right person to talk to and support you with admission appeals. Their website has leaflets about starting or changing schools. Visit [www.parentpartnershipdevon.org.uk](http://www.parentpartnershipdevon.org.uk), email [parentpartnershipservice-mailbox@devon.gov.uk](mailto:parentpartnershipservice-mailbox@devon.gov.uk) or call **01392 383080**,

Advice is also available from **Contact a Family - SEN National Advice Service** on 0808 808 3555 and from **Coram Children's Legal Centre - Family, Child and Education Legal Advice Line** on 08088 020 008.

### **Direct.gov website**

This website provides information and links on many subjects, including school admissions.

## School transport

You can express a preference for a place at any school, but your child may not be entitled to free school transport. It is important that you check whether your child will be entitled to transport and, if not, consider carefully how your child is going to get to the school you prefer for the whole of the time they will be there. Please note transport for non-entitled students such as foreign exchange students, taking friends home to tea and to work experience placements and induction days is not provided.

### How do I check if my child is eligible?

If you apply for a place at the school designated to serve your child's home address and that is more than three miles away by the shortest walking route, you will be entitled to free transport. You can check your child's designated school at [www.devon.gov.uk/schoolareamaps](http://www.devon.gov.uk/schoolareamaps) or by calling **0345 155 1019**.

**In Newton Abbot there are two designated secondary schools for admission purposes: Coombeshead Academy and Newton Abbot College. Transport on designated schools grounds is available to the single school which was designated for each address in 2010. You will also be entitled to free transport to the school nearest to your home, provided it is still over three miles from your home by the shortest walking route.**

### How are distances measured?

Walking distances are measured using the shortest available walking route. This may include roads, recognised footpaths and bridleways. The measurement is made between the nearest entrance to your child's home (for example, the front door) and the nearest entrance to the school grounds. Private driveways to homes and in schools are not included in the measurement. Distances are measured using Devon's geographic information system (GIS).

### What if I am on a low income?

The statutory right to free transport for secondary education covers all children aged 11–16 from low income families to a choice of

the three nearest schools to their home address. However, transport will only be provided if the qualifying school is between two and six miles of the home address. Distances of up to two miles are measured using the shortest available walking route as described above, and distances of over two miles and up to six miles are measured by road. If your child is entitled to free school meals, or your family is in receipt of the maximum level of Working Tax Credit, then your family is considered to be on a low income. You will need to provide us with proof of receipt of the maximum level of Working Tax Credit.

### What if my circumstances change?

This entitlement has to be reapplied for every year so you should not assume you will continue to have support if your circumstances change, for example, if your child is no longer receiving free school meals, or if your family is no longer receiving the maximum level of Working Tax Credit. If you feel you may be eligible you are advised to consider carefully whether you would be able to continue to get your child to the school of your choice if this happened and assistance was withdrawn.

### What if I have expressed a preference for a school because of religion or belief?

You should consider how you will get your child to school. If you prefer a school on the grounds of religion or belief please be aware that Devon will only provide transport to the designated or nearest school to home (more than three miles away via the shortest available walking route). Children eligible for free school meals, or whose families receive the maximum level of Working Tax Credit are entitled to free transport to the nearest **faith** school if the school is between two and 15 miles from home. Distances of up to 2 miles are measured using the shortest available walking route and distances between 2 and 15 miles by road. This entitlement will also be assessed annually. Evidence will be required.



### **Is transport provided to grammar schools?**

Not unless it is the nearest school to your child's home (and more than three miles away via the shortest available walking route). Please also see "what if I am on a low income" above.

### **Transport entitlement to Queen Elizabeth's will be assessed on whether education is provided at the upper or lower school.**

### **Whose responsibility is it to get my child to school?**

You must make sure that your child gets to and from school. If you are entitled to free transport for your child, that responsibility is met when you take up your entitlement. Otherwise you must make your own arrangements. You are encouraged to consider the practicalities of getting to a school which is not in walking distance if it is not the designated or nearest.

### **If free transport is withdrawn can I appeal?**

Yes, if you are unhappy with the decision about eligibility for education transport or the withdrawal of transport please contact the Education Transport Team on **0345 155 1019** and explain the problem fully. They will advise you on your options.

### **Do I have to apply for school transport?**

If your child is starting school at the designated or nearest school to your home address in September and you live more than three miles from the school, the Education Transport Team will contact you, normally by email, during April or May to let you know your child is entitled to free school transport.

If your child is not attending the designated or nearest school to your home address and you think he or she might qualify on faith or low income grounds please ring **0345 155 1019** for an application form and return it with a copy of your current benefit evidence.

If your child is starting school at any other time please contact the Education Transport Team.

### **Travelling to school**

It is our vision that Devon will be the 'greenest' county in England and that every child will be able to travel to school as healthily, sustainably and, most of all, as safely as possible. Please consider when selecting a school for your child, the proximity and accessibility of the school to your home. Daily physical exercise in the form of walking, cycling and walking for a bus or train are all beneficial for your child's health, as well as being sociable, better for your pocket and better for the local and global environment. Devon works with a hierarchy of travel options giving priority to walking and cycling, then school and public transport followed lastly by taxi and car travel. For more information, email **stplans@devon.gov.uk**

Your local school could be filled by 'positive' preferences. If you don't apply for your local or designated school on time your child may be allocated to a school further from home. If this happens any transport arrangements will be your responsibility.

### **Other local authority areas and transport**

A secondary school in another county may be closer to your child's home than the nearest Devon school. If the school in Devon that you would like your child to go to is **not** your designated school, and there is a closer school across the county boundary, you may not be eligible for free school transport. If you live close to the boundary and you are thinking of applying for a school which is not the one designated for your child's home address, please consider how your child will get to school.

If your child **does not** have a Statement of Special Educational Need or an Education, Health and Care Plan and is attending a mainstream school, please contact us on **0345 155 1019** if they have special needs or medical issues that affect their ability to get to school or to use the transport that is provided.

## Other Local Authority areas

If your child lives in Devon, near to the border of another local authority (LA) area, you may want to make a preference for a school in that area as well as, or instead of, a Devon school. If this is the case, you must still apply to Devon.

If your child lives outside England and you wish to apply for a place in a Devon school ahead of a move to the area, you can apply to Devon.

The following areas of Devon have a designated secondary school located in another LA. Children there have a priority for the school outside Devon:

**Lifton** (Launceston College, Cornwall),

**Hartland** (Budehaven Community School, Cornwall),

**Uplyme** (The Woodroffe School, Dorset).

When we receive your application we will contact the neighbouring LA to tell them about the school(s) in their area for which you have expressed a preference. They will consider your application alongside the others that they receive. They will then let us know their decision.

If you don't live in the Devon LA area but you would like a place in a Devon school, you must complete the application form for your child's 'home' LA. They will then tell us that you would like a place in a Devon school. In turn, we will advise your child's home LA whether a place is available. That LA will write to tell you about the secondary school place which is offered for your child, even if it is a school in the Devon LA area.

The contact details for the five neighbouring LAs to Devon are:

### Cornwall

- **0300 1234 101**
  - **[schooladmissions@cornwall.gov.uk](mailto:schooladmissions@cornwall.gov.uk)**
  - **[www.cornwall.gov.uk/admissions](http://www.cornwall.gov.uk/admissions)**
- Schools often applied to in Cornwall by Devon residents: Budehaven Community School, Launceston College, Callington Community College

### Dorset

- **01305 221060**
- **[admissions@dorsetcc.gov.uk](mailto:admissions@dorsetcc.gov.uk)**
- **[www.dorsetforyou.com/schooladmissions](http://www.dorsetforyou.com/schooladmissions)**

A school often applied to in Dorset by Devon residents: The Woodroffe School.

### Plymouth

- **01752 307469**
- **[school.admissions@plymouth.gov.uk](mailto:school.admissions@plymouth.gov.uk)**
- **[www.plymouth.gov.uk/schooladmissions](http://www.plymouth.gov.uk/schooladmissions)**

Schools often applied to in Plymouth by Devon residents: Coombe Dean School, Devonport High School for Boys, Devonport High School for Girls, Tor Bridge High, Notre Dame RC School, Plymouth High School for Girls, Plymstock School, St Boniface's RC College.

### Somerset

- **0845 456 4038**
- **[schooladmissions@somerset.gov.uk](mailto:schooladmissions@somerset.gov.uk)**
- **[www.somerset.gov.uk/admissions](http://www.somerset.gov.uk/admissions)**

Schools often applied to in Somerset by Devon residents: Holyrood Academy, Kingsmead Community School.

### Torbay

- **01803 208908**
- **[pupil.services@torbay.gov.uk](mailto:pupil.services@torbay.gov.uk)**
- **[www.torbay.gov.uk/schooladmissions](http://www.torbay.gov.uk/schooladmissions)**

Schools often applied to in Torbay by Devon residents: Torquay Girls' Grammar School, Torquay Boys' Grammar School, St Cuthbert Mayne School, Westlands School, Torquay Academy, Paignton Community & Sports College, Brixham College, Churston Ferrers Grammar School.

Admissions to any school in another LA may require the completion of a Supplementary Information Form. Please contact the school or the relevant LA for further information.

## Statements and EHC Plans

If your child has a Statement of Special Educational Needs or an Education, Health and Care Plan, you can apply in the same way: online at [www.devon.gov.uk/admissionsonline](http://www.devon.gov.uk/admissionsonline) though the information process is slightly different.

You will receive a letter from the Devon's 0-25 SEN Team explaining the changes they intend to make to your child's Statement or Plan and to ask you what your preferred school is for their secondary education. You can express your preferences this way, telling them by **1 October**.

Your preferences can be for a state-funded mainstream school, support centre in a mainstream school, special school or a free school. You will want to consider carefully the views of your child's current school and other professionals who work with your child. These should have been discussed at the Annual Review Meeting held when your child was in Year 5. The Admissions Team will pass your preference details to the 0-25 Team by **15 November**, so it is very important that you apply on time.

The 0-25 Team will write to you by **15 February** to tell you how your child's Statement or Plan will be amended, including the name of the secondary school allocated for September 2015. If we cannot offer the school you told us is your first preference, you will have the right of appeal to the Special Educational Needs and Disability Tribunal (SENDIST). Details about the appeal process and any other information you may need about these arrangements are available from the 0-25 Team which can be contacted on **01392 383913**.

You will receive another letter sent on **2 March** to confirm the name of the secondary school allocated for the following September.

## Early or Late Transfer

It is very unusual for children not to transfer to secondary school at the end of Year 6. In very exceptional circumstances, if your child is extremely intelligent **and** is socially and emotionally mature enough to cope with secondary school, early transfer may be appropriate.

Similarly, if your child has severe educational or social needs, in some exceptional circumstances they may remain at primary school for an extra year.

If you feel that your child should be considered for early or late transfer to secondary school, you should first discuss this with the head teacher at your child's primary school. You must contact us here in Admissions to discuss this further and tell us about it on your application form.

If you do wish to request early or late transfer, you will be required to provide independent professional evidence to support your request. This would be to establish that your child needs to be accelerated or held back a year. This will be discussed with your child's headteacher and the headteacher of the secondary school your child might attend.

**For early transfer, the admission authority for the secondary school must agree that it is appropriate. Where we are the admission authority, we will always seek the views of the head teacher.**

For late transfer into Year 7, the admission authority for the secondary school must agree that it is appropriate. Where we are the admission authority, we will always seek the views of the head teacher. If the headteacher does not agree, you must make a decision on whether to seek a place elsewhere in Year 7 or to seek a place in your child's chronological Year Group.

## Other information

### In-Year Admissions

You can apply through us for a place at most state-funded schools in Devon using our in-year common application form. This is available at [www.devon.gov.uk/admissions](http://www.devon.gov.uk/admissions) or by calling **0345 115 1019**. St Peter's Church of England Aided School and Steiner Academy Exeter provide their own in-year application forms. You can apply at any time to change schools in year, whether you have moved home or have changed your preference for a local school.

Moving to a new school is an important step for any child. Sometimes it is necessary because of a house move to a new area. If you are not moving address and would like to change your child's school, you should take the following into consideration:

- How will your child cope with learning new rules and having to do things differently, or possibly having missed important work? Children who transfer schools after their exam subjects have been chosen in Year 9 may find that they can't do the same subjects, or that the exam board and courses are different.
- If your child has brothers or sisters at the same school, transferring one child may affect the others. Will it be difficult for you to have children attending different schools? How will you manage the start and finish times? Some schools in Devon are full and may not be able to offer you a place.
- In addition to reading the In-Year Admissions Guide, we advise that you sit down with your child and ask them why they want to move to a different school. If they mention that they are being bullied or not getting on with other pupils, you should speak to your child's Form Tutor or Head of Year first in order to try and resolve the situation. All schools have an 'Anti-Bullying Policy' that must be followed. If, after doing this, you still have major concerns or are unhappy about the way the school is dealing with your complaint, you should make an appointment to speak to the Headteacher. You may also write to the Chair of Governors.

### Fair Access Protocol for In-Year Admissions

Devon operates a Fair Access Protocol which provides for the in-year admission of children in certain circumstances when the school is full and the Year Group has begun. The Fair Access Protocol does not apply for normal intake admissions. For further information, please contact the Admissions Team on **0345 155 1019** or at [admissions@devon.gov.uk](mailto:admissions@devon.gov.uk)

### Help with school meals

If you receive the following benefits, your child is eligible for free school meals:

- Income Support (IS)
- Income-based and Contribution-based Jobseeker's Allowance (JSA) or Employment and Support Allowance (ESA) on an equal basis
- Income-based Jobseeker's Allowance (IBJSA)
- Income-related Employment and Support Allowance (IRESA)
- Child Tax Credit without Working Tax Credit (WTC) with an annual taxable income (as assessed by HMR&C) of less than £16,190
- entitled to Working Tax Credit run-on (for a further 4 weeks after no longer qualifying for WTC)
- Guaranteed Element of State Pension Credit
- Support under Part VI of the Immigration and Asylum Act 1999.

You can get more individual advice by calling the Education Helpline on **0345 155 1019**.

### The Pupil Premium

The pupil premium is additional school funding for children registered for free school meals at any point in the last six years, those who have been looked after continuously for more than six months, and children of service personnel.

Your child doesn't need to take free school meals for the school to receive the additional funding.

## School Uniform

Many schools feel that a uniform plays a valuable role in setting the tone of a school. Uniforms for a school should be widely available rather than from a sole supplier. Schools should not use uniforms to raise additional funds. Schools with a uniform should make discrete arrangements so that no family feels unable to apply for admission on account of the cost of uniform. This applies equally to sports kits and any other equipment which is required by pupils.

Devon does not provide a uniform grant. In cases of exceptional hardship, parents may seek advice from the Education Welfare Service: [www.devonldp.org/edwelfare](http://www.devonldp.org/edwelfare)

## Private Fostering arrangements

This is when a child under 16 years (or 18 if they have a disability) is looked after for 28 days or more by someone who is not a close relative, guardian or person with parental responsibility. Close relatives include parents, step-parents, aunts, uncles and grandparents. It is not private fostering if the arrangement was made by Devon County Council or if the person looking after the child is an approved foster carer.

The child's parent(s), private foster carer and anyone else involved in the arrangement are legally required to tell Devon County Council in writing, immediately, if the arrangement has already started or is due to begin within six weeks. We will work in partnership with the child, parents and private foster carer to make sure that the best possible arrangements are in place. This includes advice on cultural, religious and linguistic needs as well as support for the child, parents and private foster carer.

You can contact the Private Fostering Team by email [mashsecure@devon.gcsx.gov.uk](mailto:mashsecure@devon.gcsx.gov.uk), visit [www.devon.gov.uk/fostering](http://www.devon.gov.uk/fostering) or call **0345 155 1013**.

## Insurance

Devon County Council is insured against its legal liability for any injury, loss or damage caused to pupils as a result of negligence on its part of

that of its employees. Pupils attending County Council schools are not insured for personal accident benefits while on education premises or on work experience schemes. However, insurance cover is provided for pupils taking part in organised school trips and visits. We expect pupils to accept responsibility for their personal possessions, including money. Parents may consider taking out insurance themselves to cover any risks. Further information is available from schools - particularly academies which are not maintained by Devon.

## Home-School Agreements

These agreements can promote greater involvement by parents in children's education. They can set out what is expected of and for children and families at a school. After a place has been offered, the school may ask parents to sign an agreement. Admission is not conditional on an agreement being signed.

## Religion and Belief

All schools are required to provide religious education that fulfils the requirements of a locally agreed syllabus. Voluntary aided schools with a religious character normally follow a Diocesan syllabus or one agreed by the governing body. Religious Education (RE) is intended for all pupils. However, parents have the right to withdraw their child from the subject. We encourage parents to discuss the school's RE provision with Headteachers. All schools are also required to have collective worship for all pupils every day. This will follow a pattern agreed by the governors of the school. Collective worship is intended for all pupils. However parents also have the right to withdraw their child from collective worship.

## Contribution to school funds and trips

There is no charge or cost related to the admission of a child to a school.

Many schools operate a school fund to which and ask parents to contribute. Such donations are entirely voluntary and cannot form a condition for admission. The money collected in this way is used to pay for activities or to buy equipment that is not provided from the school budget.

School trips are an important part of school life and can contribute to the ethos of the school. Schools may ask parents for a voluntary contribution towards the cost of a school trip but may not charge for a trip which takes place in school hours or is part of the National Curriculum. Many schools provide support for those unable to afford the cost of school trips and activities.

## Glossary and Definitions

Academy, free, voluntary aided and foundation schools may use their own definitions for terms used in their admissions policies. Where one of these schools does not define their terms, the Devon definitions will be the default definition. You can view our Glossary for school admissions and transport at [www.devon.gov.uk/admissionarrangements](http://www.devon.gov.uk/admissionarrangements).

**Academy** - a state-funded school independent of local authority control. It must participate in admissions schemes.

**All-through school** - a school which admits children to primary and secondary year groups. Children in Year 6 automatically have a place in Year 7 though they can apply for another secondary school. We ask parents to complete an application form even if remaining at the school so that we know how many places are available at the all-through school for other children.

**Children in Care** - children who are looked after by or provided with accommodation by Devon County Council or any other local authority.

**Children formerly in Care** - children who were looked after by or provided with accommodation by Devon County Council or any other local authority but were then immediately adopted or made the subject of a residency order or made the subject of a special residency order. For admissions purposes, they are considered as if they were still in Care.

**Community schools** - state schools in England which are wholly owned and maintained by the LA which is the admitting authority with responsibility for deciding arrangements for admission.

**Designated area** - also known as a catchment area. The geographical area served by a school. Children living in a school's designated area will have a higher priority for a place. Residence "in-area" **does not** guarantee admission.

**Education, Health and Care Plan** - the replacement for Statements; a document that acknowledges and makes provision for a child's special educational needs. A child with an EHC Plan naming a school must be admitted.

**Foundation schools** - maintained by the LA but where the governing body is responsible for admission and appeal arrangements.

**Free school** - an academy governed by non-profit charitable trusts.

**Home address** - The local authority will not accept more than one address as the child's home address.

Where we ask for evidence of the address from which a child would attend school, this would usually be written confirmation of a house purchase or a formal tenancy agreement. We recognise that some families may be unable to provide this - for example, where a house move is at very short notice or where a family is escaping domestic violence. If you cannot provide this evidence, please contact us. We do not intend to penalise families where there is a genuine reason why the usual evidence cannot be provided.

The terms of a residency order may clarify the home address. Where necessary to determine which address to recognise and in the absence of a residency order, the LA will consider the home address to be with the parent with

primary day to day care and control of the child. Evidence may be requested to show the address to which any Child Benefit is paid and at which the child is registered with a medical GP. Any other evidence provided by parents will also be considered in reaching a decision on the home address for admissions purposes.

This may be necessary for instance where parents do not agree on the child's home address. Parents are urged to reach agreement or seek a Specific Issues Order from a court to decide which parent should or should not pursue an application. Where they do not, the admissions authority will determine the home address.

**In-year admissions** - these take place after a Year Group has begun at a school - during Years 7 to 11 at a secondary school. Oversubscription criteria will be the same as at the normal round transfer except that there will be no reference to attendance at a linked primary or junior school. **LA** - local authority, eg Devon County Council.

**Linked schools** - also known as feeder or contributory schools. These are schools with particular links with a secondary school for transition and the curriculum. Brings priority - but not a guarantee - for admission to the secondary school.

**Oversubscription criteria** - the criteria used to prioritise applications and decide who should be offered a place. They are not used where a school has fewer applications than there are places available.

**PAN** - the Published Admission Number. The minimum number of children to be admitted to a school in Year 7 where there are sufficient applications.

**Parents** - A parent is any person who has parental responsibility of care for the child. When we say parent, we also mean carer or guardian.

**Preference** - The school named in an admissions application.

**Sibling** - This will be a full, adopted half or step brother or sister and will include a full, adopted half or step brother or sister living at a different address. Foster children will count as a brother or sister to those living within the foster household or where appropriate, the natural parental home address.

**Statement of SEN** - Special Educational Needs, sometimes requiring a Statement or EHC Plan for a child. A child with a Statement of SEN which names a school must be admitted to that school.

**Supplementary Information Form (SIF)**  
All parents who list their preferred schools on an LA common application form are regarded as having made valid applications. An additional form may also allow applicants to be considered under faith criteria for faith schools, as a consequence of a parent being a member of staff at the school, for boarding schools and for selective schools. **In all cases, a Common Application Form must be completed.**

**Voluntary Aided School** - these schools have a religious ethos. The governing body is responsible for admission and appeal arrangements. These schools usually prioritise children of their faith.

**Voluntary Controlled School** - these are schools in England which are maintained by the local authority with a Foundation (generally religious) which appoints some – but not most – of the governing body. The LA is the admissions authority.

## 2015-16 Oversubscription Criteria

Each school has a limited number of places it can offer in Year 7 for new children joining the school - the Published Admission Number or PAN. If there are fewer applications than the PAN, no application is refused. If there are more applications than the PAN, they are prioritised using oversubscription criteria. These ensure that some groups of children, for example, those who live nearest the school, have a better chance of getting a place.

The criteria we use for community and voluntary controlled secondary schools in Devon are below.

These are the oversubscription criteria for the community and voluntary controlled secondary schools in Devon: **The Axe Valley Community College, Sidmouth College and St Luke's Science and Sports College** (not those seeking admission according to sporting aptitude).

These criteria are also used by:

**Bideford College**

**Braunton Academy**

**Cranbrook Education Campus**

**Cullompton Community College**

**Dartmouth Academy**

**Dawlish Community College**

**Holsworthy Community College**

**Honiton Community College**

**Okehampton College**

**The Park Community School**

**South Dartmoor Community College**

**South Molton Community College**

**Tavistock College**

**Tiverton High School**

**West Exe School**

A child with an Education, Health and Care Plan or Statement of Special Educational Need naming a school will be admitted to that school.

1. Children in Care or who ceased to be in Care because they were adopted or made the subject of a residence order or made the subject of a special guardianship order.
2. Children for whom exceptional social, medical or educational need is demonstrated.
3. Children living in the school's designated area with a sibling on roll at the school at the date of application.
4. Other children living in the school's designated area – no sibling, but attending a linked primary or junior school.
5. Other children living in the school's designated area.
6. Children living outside the school's designated area, but with a sibling on roll at the school at the date of application.
7. Children living outside the designated area – no sibling, but attending a linked primary or junior school.
8. Other children.

Please see page 31 for the full criteria for **St Luke's Science and Sports College**. The criteria above relate to children seeking admission other than on sporting aptitude grounds.

**Notes to the oversubscription criteria for Devon's community schools. There are similar notes to the criteria for all schools which are their own admission authority (please see the admission arrangements for individual schools):**



(a) If it is necessary to differentiate between children in category 3 or 5, those children attending a linked primary school will have priority over other children within that category.

(b) If it is necessary to distinguish between children in a particular category [or between pupils in a sub-category of category 3 or 5 – see note (a) above], priority will be determined on the basis of distance between home and school measured as a direct line from the entrance of the property (residential dwelling) to the school (blue establishment marker) as plotted on Mapscape (GIS). The shorter the distance, the higher the priority. Where necessary, measurements will be to the closest metre. Parents should note that the direct-line policy does not apply to school transport decisions.

(c) If the tie-breaker at (b) is not sufficient to distinguish between applicants in a particular category, there will be a random ballot. This will be undertaken by the LA Admissions Manager in the presence of a County Councillor or senior officer by the operation of an electronic list randomiser.

(d) For criterion 2, priority will be given to the admission of a child for whom an exceptional medical or social need to attend that particular school is demonstrated, including where a child is admitted to a special educational needs support centre at the school. Such decisions will be made using the Devon Protocol for admission to children with Exceptional Medical or Social Need.

(e) Where applications are received from families with multiple birth siblings (twins, triplets etc) every effort will be made in accordance with the school's oversubscription criteria to allocate places at the same school, including offering place(s) above the Published Admission Number (PAN) wherever possible. This recognises the exceptional nature of the emotional bonds between multiple birth siblings. Where that is not possible, parents will be invited to decide which of the children should be offered the available place(s) or seek places at an alternative school with sufficient places to accommodate

both or all of the multiple birth siblings.

(f) Where applications are made at the same time for two children not falling within multiple birth siblings, (sometimes referred to as contemporaneous admissions) the application will not be considered under the 'sibling' criteria.

(g) Waiting lists are kept where there are more applications than places available. They are held in order of oversubscription criteria by the LA and may be passed to the relevant school after the first full week in September. Waiting lists will be kept so long as there is at least one name on them. When the secondary co-ordinated scheme ends (31 August 2015), lists will be recalculated on the basis that children will no longer be attending linked primary or junior schools.

(h) A list of linked primary and junior schools for each secondary school is available in the school details section.

(i) Where two or more children reside within a block of flats, they will be deemed to live at an equal distance from the school.

(j) For children of UK service personnel and other Crown Servants the School Admissions Code requires schools to treat a family posted to their area as meeting residence criteria for the designated area even if a residential address has not been identified. This would require confirmation in the form of a letter from the relevant government department (for example, the Ministry of Defence, the Foreign and Commonwealth Office or Government Communications Headquarters.)

(k) For normal round admissions, the date of application will be taken to be the close of applications. If a sibling is then admitted on roll and the parent informs the School Admissions Team of the LA before the application processing date for the co-ordination scheme, the child will be accepted as having sibling priority for the first round of applications. Such a change in status made known to the Admissions Team after the processing date for the co-ordination scheme will apply at the second round of allocations and later.

### **Budehaven Community School** - a Cornwall school

1. Children In Care or children who were previously in care.
2. Children who live in the designated area of Budehaven Community School, or whose parents can provide evidence that they will be living in the designated area of Budehaven Community School by the beginning of the autumn term of the 2015-16 school year. If there are more designated area children wanting places at the School than there are places available, criteria 3 to 6 below will be used to decide which of these children should have priority for admission. If there are still places available after all the designated area children have been allocated places, criteria 3 to 6 will be used to decide which of the remaining children should have priority for any spare places.
3. Children with an unequivocal professional recommendation from a doctor, school medical officer, educational psychologist, health visitor, education welfare officer or social worker that non-placement at Budehaven Community School would cause harm to the child and that placement at Budehaven Community School is essential. Such recommendations must be made in writing and must give full supporting reasons.
4. Children with siblings who will still be attending Budehaven Community School at the time of their admission.
5. Children on the roll of a feeder primary school (at the time of allocation) whose designated area is contained within or forms part of the designated area of Budehaven Community School.
6. All other children

### **Chulmleigh Community College, Coombeshead Academy, Exmouth Community College, Great Torrington School, Ivybridge Community College, King Edward VI Community College, The King's School, Queen Elizabeth's, St James School and Teign School.**

(Supplementary Information Form for criterion 6)

1. Children in Care or who were in Care but ceased to be in Care because they were adopted, made the subject of a residence order or a special guardianship order.
2. Children for whom an exceptional medical or social need is demonstrated.
3. Children who live in the college's designated area, with a sibling on roll at application.
4. Other children who live in the college's designated area, attending a linked primary school.
5. Other children who live in the college's designated area.
6. Children of members of staff employed for more than two years by the college or recruited within the past two years to fill a vacancy for which there was a skills shortage.
7. Children who live outside the college's designated area, with a sibling on roll at application.
8. Children who live outside the designated area, attending a linked primary school.
9. Other children.

### **Clyst Vale Community College** (Supplementary Information Form for criterion 7)

1. Children in Care or who were in Care but ceased to be in Care because they were adopted, made the subject of a residence order or a special guardianship order.
2. Children for whom an exceptional medical or social need is demonstrated.
3. Children who live in the college's designated area, with a sibling on roll at application.
4. Other children who live in the college's designated area, attending a linked primary school.
5. Other children who live in the college's designated area.
6. Children who live outside the college's designated area, with a sibling on roll at application.
7. Children of members of staff employed for more than two years by the college or recruited in

## Application for secondary transfer - September 2015

Use this form if:

- your child lives in the Devon local authority area;
- your child was born between **1 September 2003 and 31 August 2004** (inclusive);
- your child is in Year 6 of a Primary or Junior school or home educated and you want a place in Year 7 at a Secondary School in September 2015;
- even if one or more of your preferences is for a school outside of Devon.

Your application may be considered late if submitted after **31 October 2015**. Return it either to the **School Admissions Team, Room L102, County Hall, Exeter EX2 4QU** or to your child's current school.

You can express a preference for up to three schools and tell us about any reasons for your preferences.

If any of your preferences are for **Academies or Free, Voluntary Aided, Foundation Schools**, you may want to provide evidence for particular criteria by completing a school Supplementary Information Form as well as this form.

You must register your child to sit any entrance or aptitude test for a school in early September.

**You are strongly advised to read the Next Step booklet and to ask if you have any questions - you can call 0345 155 1019 or email [admissions@devon.gov.uk](mailto:admissions@devon.gov.uk)**

### Section A - Details about your child

Forename(s)		Surname/Family Name	
Home Address			
Postcode			
This must be the address where your child is normally resident. If you expect to move from this address before September 2015, you must let us know as this may affect your application. Evidence of a new address will be necessary - the Admissions Team will confirm with you whether a change of address is accepted.			
School currently attended			
		Date of Birth	Gender (M or F)
Is your child in the care of a local authority or was your child in care until adopted, made the subject of a residency order or special guardianship order?		Yes / No	
If Yes, which Local Authority?			
Does your child have a Statement of Special Educational Need or an Education, Health and Care Plan?		Yes / No	
Are you moving due to a new posting as Service or Crown Servant Personnel?		Yes / No	

## Section B - Details about you

Your Title (Mr, Mrs, Ms, Miss, Dr)	Forename
Home Address (if different from your child's)	Surname/Family Name
	Postcode
	Telephone (Daytime)
	Your relationship to your child
Email address	
Do you have parental responsibility for your child?	Yes / No

## Section C - Your preferred schools

### 1) First preference school (where you would most like a place)

Name of school	
Reasons for your preference	
Does your child have an exceptional social or medical need for a place at this school?	Yes/No
Please provide details. (You should read about exceptional social and medical need in the Next Step.)	
Does your child have a sibling attending this school?	Yes/No
Name of sibling:	Date of Birth

## Section C - Your preferred schools

**2) Second preference school** (where you would like a place if one is not available at your first preference school)

Name of school

Reasons for your preference

Does your child have an exceptional social or medical need for a place at this school?

Yes/No

Please provide details. (You should read about exceptional social and medical need in the Next Step.)

Does your child have a sibling attending this school?

Yes/No

Name of sibling:

Date of Birth

**3) Third preference school** (where you would like a place if one is not available at your first or second preference school)

Name of school

Reasons for your preference

Does your child have an exceptional social or medical need for a place at this school?

Yes/No

Please provide details. (You should read about exceptional social and medical need in the Next Step.)

Does your child have a sibling attending this school?

Yes/No

Name of sibling:

Date of Birth

## Section D - Your declaration and signature

You may be asked to provide proof of your child's date of birth.

You may be asked to provide proof of your address.

Devon takes very seriously any attempt to gain an advantage in the admissions process by giving false information and will investigate possible fraudulent claims. If we offer a place at a school and then discover that the offer was made on fraudulent or misleading information (for example, a false claim to be living at an address) the offer may be withdrawn. This has happened in previous years. Where a place has been offered based on false information, we can withdraw the offer even after your child has started at school.

You understand that a parent may make only one application with up to three schools for a child. If you make more than one application, your later application will render your earlier application invalid.

You understand that admission to a school which is neither the closest available to your child's home or the school designated for the address may affect your entitlement to Education Transport from the Local Authority. You are strongly advised to read the information in the Next Step booklet regarding the Education Travel Policy.

You must apply using a Common Application Form from your child's home local authority.

**I/we confirm that the details provided are accurate.**

**I/we understand that transport to a preferred school which is neither the designated nor the nearest school may be my/our responsibility.**

**I/we will advise the School Admissions Team direct of any changes to circumstances affecting this application or the offer of a school place including changes of address, preferences for schools and the allocation of a place to a sibling at any school I/we have named on this form.**

**I/we confirm that I have read and understood information in the Local Authority admissions booklets or had access to do so.**

Your signature

Name (please print)

Date

Your signature

Name (please print)

Date

We encourage both parents to be in agreement over preferences but only one signature is required.

**Please return this form to your child's school or the School Admissions Team by 31 October (or as soon as possible, with reasons why you feel your application should be considered on time).**

### Data Protection

The Information collected on this form will be processed and stored electronically by Devon County Council in compliance with the UK Data Protection Act. The Data may be shared with other areas of the County Council, but only for administrative or other service provision purposes and Government Departments where there is a Legal requirement to do so. In accordance with the School Admissions Code,

should the information given be found to be fraudulent then the offer of a school place can be withdrawn. If you would like further information about Data Protection please see: [www.devon.gov.uk/data\\_protection](http://www.devon.gov.uk/data_protection) or contact the Corporate Information Governance Team at [dpoffice@devon.gov.uk](mailto:dpoffice@devon.gov.uk). By signing and returning this form you acknowledge that you have read, understand and agree to this data processing.

**You can apply online at [www.devon.gov.uk/admissionsonline](http://www.devon.gov.uk/admissionsonline)**

the past two years to fill a vacancy for which there was a skills shortage.

8. Children who live outside the designated area, attending a linked primary school.
9. Other children.

### **Colyton Grammar School** (Registration Form required to sit the entrance test)

1. Eligible children in Care or who were in Care until they were adopted or made the subject of a special guardianship order or a residency order.
2. Eligible children from families entitled to claim free school meals at the time of the test.
3. Other eligible children.

Entry is determined by performance indicating appropriate ability in the entrance tests. Applicants achieving qualified scores will be ranked on the basis of performance in the tests. All children, including those with an EHC Plan or Statement naming the school must be eligible to be admitted by being ranked in category A (eligible scores in all three elements of the test) or B (eligible scores in at least two of the three elements of the test).

A school Registration Form is available - returned to the school by midday 12 September. Forms returned after the closing date will only be accepted where the school is satisfied that illness, bereavement or other circumstance beyond the control of the parent(s) prevented timely registration, or the child moved into the area after the closing date. Evidence will be required. Late notification of the testing timetable will not be accepted as a reason. For children whose registration or common application form (or both) were submitted after the closing dates, there will be an opportunity to sit the school entrance tests for consideration after the first round of allocations. For further information regarding the test, please contact the School.

### **Coombe Dean School and Tor Bridge High** - Plymouth schools (Supplementary Information Form for criterion 5)

1. A looked after child or a child who was previously looked after but immediately after becoming looked after became subject to an adoption, residence or special guardianship order.
2. A child with exceptional social or medical grounds.
3. Children with a sibling already attending the school at the time of admission.
4. Children attending a feeder primary school.
5. Children whose parent is a member of staff employed at the school for two or more years at the time at which the application for admission to the school is made or where the member of staff is recruited to fill a vacant post for which there is a demonstrable skill shortage.
6. Other children.

**The Ilfracombe Academy** (Supplementary Information Form for criterion 7)

1. Children in Care or who were in Care but ceased to be in Care because they were adopted, made the subject of a residence order or a special guardianship order.
2. Children living in the catchment area with a sibling on roll at The Ilfracombe Academy at the date of application.
3. Children living in the catchment area and attending one of our partnership schools at the time of application.
4. Other children living in the catchment area.
5. Children living outside the catchment area with a sibling on roll at The Ilfracombe Academy at the date of application.
6. Children living outside the catchment area and attending one of our partnership schools at the time of application.
7. Children of members of staff employed for more than two years by the academy or recruited within the past two years to fill a vacancy for which there was a skills shortage.
8. Other children.

**Kingsbridge Academy** (Supplementary Information Form for criterion 5)

1. Children in Care or who were in Care but ceased to be in Care because they were adopted, made the subject of a residence order or a special guardianship order.
2. Children who live in the college's designated area, with a sibling on roll at application.
3. Other children who live in the college's designated area, attending a linked primary school.
4. Other children who live in the college's designated area.
5. Children of members of staff employed for more than two years by the college or recruited within the past two years to fill a vacancy for which there was a skills shortage.
6. Children who live outside the college's designated area, with a sibling on roll at application.
7. Children who live outside the designated area, attending a linked primary school.
8. Other children

**Launceston College** - a Cornwall school

1. Children in care and children who were in care but ceased to be so because they were adopted (or became subject to a residence order or special guardianship order) immediately after being in care.
2. Children who live within the designated area of the school, as defined by the Local Authority, or whose parents/carers can provide evidence that they will be living in the designated area of the school by the beginning of the autumn term of the 2015-16 school year.
3. Children with an unequivocal professional recommendation from a doctor, school medical officer, educational psychologist or education welfare officer that non-placement at the school would not be in the best interest of the child. Such recommendations must be made in writing and must give full supporting reasons and will be reviewed by the LA.
4. Children with siblings who will still be attending the school at the time of their admission.
5. Children on the roll of a primary school (at the time of allocation) whose designated area is contained within or forms part of the designated area of the preferred secondary school.
6. All other children.



**Newton Abbot College** (Supplementary Information Form for criterion 4)

1. Children in Care or who were in Care but ceased to be in Care because they were adopted, made the subject of a residence order or a special guardianship order.
2. Children living in the College's designated area – with a sibling who will be attending the College at the closing date for applications.
3. Other children living in the College's designated area – no sibling but attending a linked primary school.
4. Children of members of staff employed for more than 2 years by the College or recruited within the past 2 years to fill a vacancy for which there was a skills shortage.
5. Other children living in the College's designated area – no sibling and not attending a linked primary school.
6. Children living outside the College's designated area – with a sibling who will be attending the College at the closing date for applications.
7. Children living outside the designated area – no sibling but attending a linked school
8. Other children living outside the College's designated area.

**Pilton Community College** (Supplementary Information Form for criterion 8)

1. Children in Care or who were in Care but ceased to be in Care because they were adopted, made the subject of a residence order or a special guardianship order.
2. Children for whom an exceptional medical or social need is demonstrated.
3. Children who live in the college's designated area, with a sibling on roll at application.
4. Other children who live in the college's designated area, attending a linked primary school.
5. Other children who live in the college's designated area.
6. Children of members of staff employed for more than two years by the college or recruited within the past two years to fill a vacancy for which there was a skills shortage.
7. Children who live outside the college's designated area, with a sibling on roll at application.
8. Children who live outside the designated area, attending a linked primary school.
9. Other children.

**Route 39 Academy** (Supplementary Information Form for criterion 4 or 5)

1. Children in Care or who were in Care but ceased to be in Care because they were adopted, made the subject of a residence order or a special guardianship order.
2. Children for whom an exceptional medical or social need is demonstrated.
3. Children with a sibling on roll at application.
4. Children of Founders of the school.
5. Children of members of staff employed by the school.
6. Children for whom Route 39 Academy is the nearest state funded secondary school.
7. Other children.

### **St Luke's Science and Sports College** (Aptitude Supplementary Information Form)

**Note that up to 10% of places will be allocated according to sporting aptitude.**

The Sporting Aptitude Supplementary Information Form **must be completed and returned to the school by Monday 15 September. For further information, contact the College. Where two or more qualifying candidates are ranked equally at 20, these criteria will be used:**

1. Children in Care or who were in Care until they were adopted or made the subject of a special guardianship order or a residency order.
2. Registration with a relevant professional club for further development.
3. Inclusion in a National Governing Body Performance Programme or their equivalent.

For the remaining places, the following criteria will be used, as for community schools:

4. Children in Care or who were in Care but ceased to be in Care because they were adopted, made the subject of a residence order or a special guardianship order.
5. Children for whom an exceptional medical or social need is demonstrated.
6. Children who live in the college's designated area, with a sibling on roll at the college at application.
7. Other children who live in the college's designated area, attending a linked primary school.
8. Other children who live in the college's designated area.
9. Children who live outside the college's designated area, with a sibling on roll at the college at application.
10. Children who live outside the designated area, attending a linked primary school
11. Other children.

### **St Peter's Church of England Aided School** (Supplementary Information Form for criterion 4 or 5)

**Of the PAN of 250, places are available according to these eligibility criteria:**

**115 Foundation places - child and/or parent(s) frequently worship in the Church of England.**

**55 other Christian Church places - child and/or parent(s) frequently worship at churches which are members of Churches Together in Britain and Ireland or Churches Together in England, or Churches Together across Exeter or are members of the Evangelical Alliance.**

**15 other Faith places - child and/or parent(s) frequently worship within a faith other than Christianity which is part of the UK Inter-Faith Network.**

**65 open places - child and/or parent(s) do not meet the criteria for Foundation, Other Christian Church or Other Faith places.**

1. Children in Care or who were in Care until they were adopted or made the subject of a residency or special guardianship order.
2. Children with a sibling (using LA definition) in attendance at St Peter's on 2 March, 2015.
3. Children of current staff (as defined as staff who have been employed at the school for two years or more or where there is a vacancy and where it can be demonstrated that there is a skill shortage).
4. Children with exceptional social and/or medical reasons for attending St Peter's with strong supporting evidence from an appropriate professional person [see school protocol].
5. Distance from school (using LA definition), with priority given to those living nearest the school.

### **Steiner Academy Exeter** (Supplementary Information Form for criterion 3)

1. A 'looked after child' or a child who was previously looked after but immediately after being looked after became subject to an adoption, residence, or special guardianship order;
2. Children with a sibling attending the Academy at the time of application, who is still attending at the time of admission. However:
  - a) Where applications are received from families with multiple birth siblings (twins, triplets, etc.) and a place can be offered to one of the siblings, places will be offered to the other siblings wherever possible, including offering place(s) above the agreed admission number;
  - b) Where simultaneous applications are made for two or more children who are not multiple birth siblings, the application will not be considered under the sibling criteria.
3. Children of staff in the following circumstances (and in the following order):
  - a) When the member of staff is recruited to fill a vacant post for which there is a demonstrable skill shortage;
  - b) When the member of staff has been employed at the Academy for two or more years at the time at which the application for admission to the Academy is made;
4. Children not satisfying a higher criterion.

### **Teignmouth Community School** (Supplementary Information Form for criterion 7)

1. Children in Care or who were in Care but ceased to be in Care because they were adopted, made the subject of a residence order or a special guardianship order.
2. Children for whom an exceptional medical or social need is demonstrated.
3. Children attending a school which is part of the Teignmouth Learning Trust.
4. Children who live in the school's designated area, with a sibling on roll at a school is part of the Teignmouth Learning Trust at application.
5. Other children who live in the school's designated area, attending a linked primary school.
6. Other children who live in the school's designated area.
7. Children of members of staff employed for more than two years by the school or recruited within the past two years to fill a vacancy for which there was a skills shortage.
8. Children who live outside the school's designated area, with a sibling on roll at a school is part of the Teignmouth Learning Trust at application.
9. Children who live outside the designated area, attending a linked primary school.
10. Other children.

### **Uffculme School** (Supplementary Information Form for criterion 7)

1. Children in Care or who were in Care but ceased to be in Care because they were adopted, made the subject of a residence order or a special guardianship order.
2. Children for whom an exceptional medical or social need is demonstrated.
3. Children attending a primary school which is a member of the Uffculme School Trust.
4. Children who live in the school's designated area, with a sibling on roll at application.
5. Other children who live in the school's designated area, attending a linked primary school.
6. Other children who live in the school's designated area.
7. Children of members of staff employed for more than two years by the school or recruited within the past two years to fill a vacancy for which there was a skills shortage.
8. Children who live outside the school's designated area, with a sibling on roll at application.
9. Children who live outside the school's designated area, attending a linked primary school.
10. Other children.

**The Woodroffe School** - a Dorset school (School Entry Form for criteria 2 and 7)

1. Students who are looked after by the local authority and children who were looked after, but ceased to be so because they were adopted or became subject to a residence order or special guardianship order
2. Students who can demonstrate an aptitude in the Visual Arts.
3. Students living within the school's catchment area and who will have a sibling(s) attending the school at the time of admission.
4. Students living within the school's catchment area.
5. Students living outside the school's catchment area who have a sibling(s) attending the school at the time of admission.
6. Students who were attending one of the Woodroffe School's five recognised maintained feeder schools as at the deadline date during the previous year.
7. The children of teachers and support staff with at least two year's continuous service at the school or who have been recruited to a vacancy to meet a demonstrable skills shortage.
8. Students living outside the catchment area.

## Individual school information

You can view the oversubscription criteria for the 39 secondary schools in Devon and the five in Cornwall, Dorset and Plymouth whose designated areas extend into Devon now or have done historically, between pages 21 and 33. You are encouraged to view the entire admission arrangements to check matters such as tie breaks, how distances are measured and definitions specific to a school. You can find the admissions policies at [www.devon.gov.uk/admissionarrangements](http://www.devon.gov.uk/admissionarrangements) or by contacting individual schools.

On the following pages, you will find basic information on these schools. This will tell you where they are, how to contact them, what the website is and how big the school is - the number of places available for 2015 and how many children were on roll there in the middle of the last academic year. You will also see when the school's open days are scheduled - open days are subject to change and we recommend that you check the schools' own websites before attending.

We encourage all parents to visit schools if possible and to find out more about what the school can offer your child. You can use the schools' website as well as look at performance league tables and Ofsted reports. The reasons why you might want to apply for a school will include how the school has performed, what its strengths are, how the school cares for children and encourages them to develop, how your child will get to school, whether you would be eligible for free school transport and whether other children in your family have attended the school. You may have other matters important to you and your preferences.

Please use the information on these pages as a starting point to help you decide on the school or schools you are to apply for.

### School type

this can be community or voluntary controlled (where Devon is the admissions authority) or academy, free, foundation or voluntary aided (where the trust or governing body of the school

itself is the admissions authority). All Devon schools are comprehensive with the exception of Colyton Grammar School which is wholly selective and St Luke's Science and Sports College which may allocate up to 10% of its intake to children demonstrating an aptitude for a sport in which it specialises. The Woodroffe School also prioritises children who demonstrate an aptitude in art.

### School number

this is the Department of Education number for the school. The first three digits for schools in other local authorities are the LA code. (Devon's code is 878.)

### Age range

secondary schools admit children from 11 onwards, up to either 16 or 18 if they have a sixth form. All-through schools admit children from Reception or earlier if they also have a nursery.

### Number on roll

this indicates the number of children in the school in January 2014 - during the middle of the academic year in Years 7 and above.

### PAN Year 7

this is the Published Admissions Number for September 2015 - the number of places available for children joining Year 7.

### PAN Year 12

this is the Published Admissions Number for September 2015 - the number of places available for children joining Year 12.

### SIF - Supplementary Information Form

this indicates whether the school provides a SIF for parents to provide evidence to satisfy a particular oversubscription criteria (faith or having a parent who is a member of staff at the school). SIFs should be completed and handed to the school at the same time as the LA common application form is completed. A form is also used to enable you to register your child for selection or aptitude testing at Colyton, St Luke's and at The Woodroffe School.

## Individual school information

### Criteria on page

the schools' own admissions oversubscription criteria are listed on the page indicated. The criteria only affect applications where the school is oversubscribed. When a school is undersubscribed, no applicants will be refused if they want a place.

### Last year

this indicates the PAN last year, how many places were allocated for the normal round, which category saw the cut-off for allocations if the school was full and what happened with appeals if there were any. Data is at the end of the summer term. Further allocations may be made to schools as new applications are made and as vacancies arise.

Please note that demand can vary from year to year. The availability of places in one year does not guarantee availability the next year. Neither should you assume that a place will not be available if you apply just because the school was full last year.

### Linked schools

there is a priority for secondary transfer for children attending these linked primary or junior schools. Sometimes, they are called feeder or partner schools. Admission is not guaranteed for children attending a linked school. The schools linked to each secondary school are listed.

For children attending St Nicholas Catholic Primary School in Exeter, there is no formal link with a secondary school. If your child attends this school the linked secondary school will be that designated to serve your home address. This applies to Isca, St James School, St Luke's Science and Sports College and West Exe School.

### Open days/evenings

most schools arrange for tours of the school either during a school day or after school or both. Often there will also be a talk by the headteacher. You should also be able to make arrangements to visit at other times if you are unable to make an open day. For more information on times etc: [www.devon.gov.uk/nextstep-opendays](http://www.devon.gov.uk/nextstep-opendays)

Dates for open days and evenings are subject to change - you are advised to check with the school before attending and to check times and whether you are asked to book.

### Co-education

all Devon schools admit boys and girls.

### Transport

free transport is available by law to the nearest available school for children living beyond a minimum walking distance of 3 miles and where there is an entitlement on low income grounds for children living between 2 and 6 miles, measured by the shortest road route (please see the section on School Transport at page 13).

Devon also provides free transport to a single school designated for addresses which are further than 3 miles' walking distance from home. You should be aware that only one of the two schools in Newton Abbot is recognised for designated school transport. This does not affect the legal entitlement to transport to whichever school is the closest or on low income grounds.

For assessment of whether Queen Elizabeth's is the nearest available school, distances will be measured to the lower school site and then to the upper school site as the delivery of education for a child changes. This does not affect the discretionary entitlement to transport on designated school grounds for children who live in the designated area for the academy.

### Designated areas for school

To view the designated areas for schools, go to [www.devon.gov.uk/schoolareamaps](http://www.devon.gov.uk/schoolareamaps) or call the Education Helpline on **0345 155 1019**.

### Disclaimer

While every effort has been made to ensure the accuracy of information at the time of print, please be aware that other schools and colleges may convert to become academies during the academic year and so details may change. Information will be updated as necessary on the online version of *The Next Step*.

Dates and times for open days and evenings are subject to change and are included here as an indication only. Please check the school's website to confirm.

School type	School number	Age range	Number on roll	PAN Year 7	PAN Year 12	SIF?	Criteria on page
-------------	---------------	-----------	----------------	------------	-------------	------	------------------

### The Axe Valley Community College, Axminster

Community	4000	11-18	788	150	10	No	21
-----------	------	-------	-----	-----	----	----	----

**Headteacher** Mr Martin Smith

[www.axevalley.devon.sch.uk](http://www.axevalley.devon.sch.uk)

**Telephone** 01297 32146

Chard Street, Axminster EX13 5EA

**Last year**

PAN was 150 and 132 places were offered.

**Linked schools**

All Saints, Axminster, Beer, Colyton, Hawkchurch, Kilmington, Membury, Musbury, Seaton, Shute, St Andrew's, St Mary's.

**Open day/evening**

Thursday 18 September; daytime and evening.

### Bideford College

Foundation	4061	11-18	1411	330	25	No	21
------------	------	-------	------	-----	----	----	----

**Principal** Miss Veronica Matthews

[www.bideford.devon.sch.uk](http://www.bideford.devon.sch.uk)

**Telephone** 01237 477611

Abbotsham Road, Bideford EX39 3AR

**Last year**

PAN was 330 and 243 places were offered.

**Linked schools**

Appledore, East-the-Water, Hartland, Instow, Parkham, St Helen's, St Margaret's Junior, St Mary's, West Croft Junior, Woolsery.

**Open day/evening**

Monday 22 and Tuesday 23 September; daytime.  
Wednesday 24 September; daytime and evening.

### Braunton Academy

Academy	4053	11-16	655	150	-	No	21
---------	------	-------	-----	-----	---	----	----

**Principal** Mr Mick Cammack

[www.braunton.devon.sch.uk](http://www.braunton.devon.sch.uk)

**Telephone** 01271 812221

Barton Lane, Braunton EX33 2BP

**Last year**

PAN was 150 and 137 places were offered.

**Linked schools**

Caen, Georgeham, Kingsacre, Marwood, Southmead.

**Open day/evening**

Wednesday 24 September; evening.  
Week of Monday 29 September; daytime.

## Individual school information

School type	School number	Age range	Number on roll	PAN Year 7	PAN Year 12	SIF?	Criteria on page
-------------	---------------	-----------	----------------	------------	-------------	------	------------------

### Budehaven Community School

Foundation	9084150	11-18		210	20	No	23
------------	---------	-------	--	-----	----	----	----

**Headteacher** Mr David Barton

[www.budehaven.cornwall.sch.uk](http://www.budehaven.cornwall.sch.uk)

**Telephone** 01288 353271

Valley Road, Bude EX23 8DQ

**Last year**

PAN was 210 and 9 places were offered to Devon residents.

**Linked schools**

Bude Junior, Hartland, Jacobstow, Kilkhampton, Marhamchurch, St Mark's, Stratton, Whitstone.

**Open day/evening**

Please contact the school.

### Chulmleigh Community College

Academy	4054	11-16	562	120	-	Yes	23
---------	------	-------	-----	-----	---	-----	----

**Headteacher** Mr Michael Johnson

[www.chulmleigh.devon.sch.uk](http://www.chulmleigh.devon.sch.uk)

**Telephone** 01769 580215

Chulmleigh EX18 7AA

**Last year**

PAN was 120 and 113 places were offered.

**Linked schools**

Burrington, Chulmleigh, East Worlington, High Bickington, Kings Nympton, Lapford, Morchard Bishop, Winkleigh, Witheridge.

**Open day/evening**

Tuesday 16 September; evening.

### Clyst Vale Community College, Broadclyst

Academy	4009	11-18	980	182	17	Yes	23
---------	------	-------	-----	-----	----	-----	----

**Principal** Dr Kevin Bawn

[www.clyst-vale.devon.sch.uk](http://www.clyst-vale.devon.sch.uk)

**Telephone** 01392 461407

Station Road, Broadclyst EX5 3AJ

**Last year**

PAN was 182 and 154 places were offered.

**Linked schools**

Broadclyst, Clyst St Mary, Lady Seaward's, Rockbeare, Silverton, Stoke Canon, St Martin's, Whimple.

**Open day/evening**

Wednesday 17 September; evening.  
Monday 6 to Friday 10 October; mornings



Dates and times for open days and evenings are subject to change and are included here as an indication only. Please check the school's website to confirm.

School type	School number	Age range	Number on roll	PAN Year 7	PAN Year 12	SIF?	Criteria on page
-------------	---------------	-----------	----------------	------------	-------------	------	------------------

### Colyton Grammar School

Selective academy	5400	11-18	823	124	0	Yes	28
-------------------	------	-------	-----	-----	---	-----	----

**Headteacher** Mr Paul Evans

[www.colytongrammar.devon.sch.uk](http://www.colytongrammar.devon.sch.uk)

**Telephone** 01297 552327

Whitwell Lane, Colyton EX24 6HN

**Last year**

PAN was 120. A further 5 places were made available, including 2 successful appeals. Of 5 appeals, 2 were successful and 3 refused.

**Linked schools**

No linked schools.

**Open day/evening**

Saturday 6 September; morning.

The deadline for 11+ Registration Forms is Friday 12 September 2014.

### Coombe Dean School, Plymouth

Academy	8794181	11-18		180	20	No	28
---------	---------	-------	--	-----	----	----	----

**Headteacher** Mr Patrick Freat

[www.coombedean.co.uk](http://www.coombedean.co.uk)

**Telephone** 01752 406961

Charnhill Way, Plymouth PL9 8ES

**Last year**

PAN was 180 and 25 places were offered to Devon residents.

**Linked schools**

Goosewell, Wembury.

**Open day/evening**

Wednesday 10 September; evening.

### Coombeshead Academy, Newton Abbot

Academy	4112	11-18	1055	175	30	Yes	23
---------	------	-------	------	-----	----	-----	----

**Headteacher** Mr Matthew Shanks

[online.coombeshead.devon.sch.uk](http://online.coombeshead.devon.sch.uk)

**Telephone** 01626 201800

Coombeshead Road, Newton Abbot TQ12 1PT

**Last year**

PAN was 180 and 143 places were offered.

**Linked schools**

Abbotskerswell, All Saints (Marsh), Bearnas, Bradley Barton, Canada Hill, Decoy, Denbury, Haytor View, Highweek, Ipplepen, Kingskerswell, St Joseph's, Wolborough.

**Open day/evening**

Thursday 11 September; evening.  
Monday 15 September; morning.

Free transport on designated school grounds for qualifying addresses in the designated areas for Abbotskerswell, All Saints (Marsh), Denbury, Bearnas, Bradley Barton, Highweek, Canada Hill and Ipplepen only. This is in addition to statutory entitlement to free transport.

## Individual school information

School type	School number	Age range	Number on roll	PAN Year 7	PAN Year 12	SIF?	Criteria on page
-------------	---------------	-----------	----------------	------------	-------------	------	------------------

<b>Cranbrook Education Campus</b>							
Academy	TBC	2-16	0	112	-	No	21

**Executive Headteacher** Ms Moira Marder [www.cranbrookeducationcampus.org.uk](http://www.cranbrookeducationcampus.org.uk)

01392 209922 ext 285

Full address to be confirmed

**Last year** This school is due to open in September 2015.

**Linked schools** St Martin's.

**Open day/evening** Please contact school.

<b>Cullompton Community College</b>							
Foundation	4010	11-16	511	150	-	No	21

**Headteacher** Mrs Julie Phelan

[www.cullompton.devon.sch.uk](http://www.cullompton.devon.sch.uk)

**Telephone** 01884 33364

Exeter Road, Cullompton EX15 1DX

**Last year** PAN was 150 and 120 places were offered.

**Linked schools** Clyst Hydon, The Duchy, Plymtree, St Andrew's, Willand, Willowbank.

**Open day/evening** Thursday 18 and Friday 19 September; morning.  
Thursday 18 September; evening.

<b>Dartmouth Academy</b>							
Academy	6905	3-19	369	90*	6	No	21

**Principal** Mr Nick Hindmarsh

[www.dartmouthacademy.org.uk](http://www.dartmouthacademy.org.uk)

**Telephone** 01803 839700

Milton Lane, Dartmouth TQ6 9HW

**Last year** PAN was 90 and 67 places were offered.

**Linked schools** Blackawton, Kingswear, Stoke Fleming, St John the Baptist.

**Open day/evening** Tuesday 30 September and Thursday 2 October; morning.  
Wednesday 24 September; evening.

\*Children in Year 6 of the academy will automatically be entitled to a place in Year 7. The PAN refers only to children from other schools transferring to the academy. Additional places will be available where there are fewer than 30 children moving on from Year 6 within the academy.

Dates and times for open days and evenings are subject to change and are included here as an indication only. Please check the school's website to confirm.

School type	School number	Age range	Number on roll	PAN Year 7	PAN Year 12	SIF?	Criteria on page
-------------	---------------	-----------	----------------	------------	-------------	------	------------------

### Dawlish Community College

Foundation	4101	11-16	744	180	-	No	21
------------	------	-------	-----	-----	---	----	----

**Headteacher** Mr John Simon

[www.dawlish.devon.sch.uk](http://www.dawlish.devon.sch.uk)

**Telephone** 01626 862318

Elm Grove Road, Dawlish EX7 0BY

**Last year**

PAN was 180 and 136 places were offered.

**Linked schools**

Cockwood, Exminster, Gatehouse, Kenn, Kenton, Starcross, Westcliff.

**Open day/evening**

Thursday 25 September; morning and evening.

### Exmouth Community College

Academy	4012	11-18	2451	390	15	Yes	23
---------	------	-------	------	-----	----	-----	----

**Principal** Mr Tony Alexander

[www.exmouthcollege.devon.sch.uk](http://www.exmouthcollege.devon.sch.uk)

**Telephone** 01395 264761

Gipsy Lane, Exmouth EX8 3AF

**Last year**

PAN was 390 and 384 places were offered.

**Linked schools**

Bassetts Farm, The Beacon, Brixington, Drake's, Exeter Road, Littleham, Lymptone, Marpool, Otterton, St Joseph's, St Peter's, Withycombe Raleigh, Woodbury, Woodbury Salterton.

**Open day/evening**

Wednesday 1 October; evening.

### Great Torrington School

Academy	4055	11-16	752	160	-	Yes	23
---------	------	-------	-----	-----	---	-----	----

**Headteacher** Miss Tracey Amos

[www.gts.devon.sch.uk](http://www.gts.devon.sch.uk)

**Telephone** 01805 623531

Calvesford Road, Torrington EX38 7DJ

**Last year**

PAN was 160 and 138 places were offered.

**Linked schools**

Beaford, Buckland Brewer, The Clinton, Dolton, Great Torrington, Horwood & Newton Tracey, Langtree, Monkleigh, Parkham, Shebbear.

**Open day/evening**

Monday 29 September to Friday 3 October; morning.  
Thursday 25 September; evening.

## Individual school information

School type	School number	Age range	Number on roll	PAN Year 7	PAN Year 12	SIF?	Criteria on page
-------------	---------------	-----------	----------------	------------	-------------	------	------------------

### Holsworthy Community College

Foundation	4056	11-16	629	150	-	No	21
------------	------	-------	-----	-----	---	----	----

**Principal** Mr David Fitzsimmons

[www.holsworthycollege.devon.sch.uk](http://www.holsworthycollege.devon.sch.uk)

**Telephone** 01409 253430

Victoria Hill, Holsworthy EX22 6JD

**Last year** PAN was 150 and 104 places were offered.

**Linked schools** Ashwater, Black Torrington, Bradford, Bradworthy, Bridgerule, Clawton, Halwill, Highampton, Holsworthy, Pyworthy, St Giles-on-the-Heath, Sutcombe.

**Open day/evening** Wednesday 24 September; morning.

### Honiton Community College

Academy	4004	11-18	830	150	10	No	21
---------	------	-------	-----	-----	----	----	----

**Principal** Mr Glenn Smith

[www.honitoncollege.devon.sch.uk](http://www.honitoncollege.devon.sch.uk)

**Telephone** 01404 42283

School Lane, Honiton EX14 1QT

**Last year** PAN was 150 and 102 places were offered.

**Linked schools** Awliscombe, Broadhembury, Farway, Honiton, Littleton, Offwell, Stockland, Upottery.

**Open day/evening** Tuesday 23 September; evening.

### The Ilfracombe Academy

Academy	4001	11-18	970	240	30	Yes	29
---------	------	-------	-----	-----	----	-----	----

**Headteacher** Mrs Sharon Marshall

[www.ilfracombeacademy.org.uk](http://www.ilfracombeacademy.org.uk)

**Telephone** 01271 863427

Worth Road, Ilfracombe EX34 9JB

**Last year** PAN was 240 and 150 places were offered.

**Linked or partnership schools** Berrynarbor, Combe Martin, Ilfracombe Junior, Kentisbury, Lynton, Parracombe, West Down, Woolacombe.

**Open day/evening** Wednesday 17 September; evening.

Dates and times for open days and evenings are subject to change and are included here as an indication only. Please check the school's website to confirm.

School type	School number	Age range	Number on roll	PAN Year 7	PAN Year 12	SIF?	Criteria on page
-------------	---------------	-----------	----------------	------------	-------------	------	------------------

### Isca, Exeter

Academy	4006	11-16	693	196	-	No	21
---------	------	-------	-----	-----	---	----	----

**Executive Principal** Ms Beverley Martin

[www.iscaexeter.co.uk](http://www.iscaexeter.co.uk)

**Telephone** 01392 204082

Earl Richards Road South, Exeter EX2 6AP

**Last year**

PAN was 196 and 138 places were offered.

**Linked schools**

Clyst Heath, Countess Wear, Newtown, St Leonard's, The Topsham, The Woodwater, Wynstream.

**Open day/evening**

Tuesday 30 September and Thursday 2 October; morning.  
Thursday 25 September; evening.

### Ivybridge Community College

Academy	4184	11-18	2354	360	25	Yes	23
---------	------	-------	------	-----	----	-----	----

**Principal** Mr Rob Haring

[www.ivybridge.devon.sch.uk](http://www.ivybridge.devon.sch.uk)

**Telephone** 01752 691000

Harford Road, Ivybridge PL21 0JA

**Last year**

PAN was 360, increased to 420 and 419 places were offered. This included 109 children in the "other children" category. Two appeals were conceded.

**Linked schools**

Cornwood, The Erme, Ermington, Holbeton, Manor, Modbury, Newton Ferrers, Shaugh Prior, St Mary's, Stowford, Ugborough, Woodlands Park, Yealmpton.

**Open day/evening**

Thursday 18 and Thursday 25 September; evening.

### King Edward VI Community College, Totnes

Foundation	4109	11-18	1440	243	30	Yes	23
------------	------	-------	------	-----	----	-----	----

**Principal** Mr Alan Salt

[www.kingedwardvi.devon.sch.uk](http://www.kingedwardvi.devon.sch.uk)

**Telephone** 01803 869200

Ashburton Road, Totnes TQ9 5JX

**Last year**

PAN was 243 and 171 places were offered.

**Linked schools**

Berry Pomeroy, Broadhempston, Dartington, Diptford, The Grove, Harbertonford, Landscope, Marldon, South Brent, St John's, Stoke Gabriel.

**Open day/evening**

Tuesday, Wednesday, Thursday 30 September to 2 October; morning.  
Wednesday 24 September; evening.

## Individual school information

School type	School number	Age range	Number on roll	PAN Year 7	PAN Year 12	SIF?	Criteria on page
-------------	---------------	-----------	----------------	------------	-------------	------	------------------

<b>Kingsbridge Academy</b>							
Academy	4110	11-18	1406	203	35	Yes	29

**Principal** Mr Roger Pope

[www.kingsbridgecollege.org.uk](http://www.kingsbridgecollege.org.uk)

**Telephone** 01548 852641

Balkwill Road, Kingsbridge TQ7 1PL

**Last year**

PAN was 203 and 203 places were offered. This included 4 children in the "Other children" category. Of 4 appeals, 1 was conceded, 2 refused and 1 allowed.

**Linked schools**

Aveton Gifford, Blackawton, Charleton, East Allington, Kingsbridge, Loddiswell, Malborough, Salcombe, Stoke Fleming, Stokenham, Thurlestone All Saints, West Alvington.

**Open day/evening**

Thursday 25 September and Friday 3 October; morning.

<b>The King's School, Ottery St Mary</b>							
Academy	4005	11-18	1128	180	30	Yes	23

**Headteacher** Ms Faith Jarrett

[www.thekings.devon.sch.uk](http://www.thekings.devon.sch.uk)

**Telephone** 01404 812982

Ottery St Mary EX11 1RA

**Last year**

PAN was 180 and 180 places were offered. This included 28 children in the "other children" category. Two appeals were refused.

**Linked schools**

Feniton, Ottery St Mary, Payhembury, Tipton St John, West Hill.

**Open day/evening**

Thursday 25 September; evening.  
Friday 26 September; daytime.  
Please ring to confirm your place on a tour.

<b>Launceston College</b>							
Academy	9084009	11-18		223	20	Yes	29

**Principal** Mr Jack Jackson

[www.launceston-college.cornwall.sch.uk](http://www.launceston-college.cornwall.sch.uk)

**Telephone** 01566 772468

Hurdon Road, Launceston PL15 9JR

**Last year**

PAN was 223 and 22 places were offered to Devon residents.

**Linked schools**

Altarnun, Boyton, Coads Green, Egloskerry, Lewannick, Lifton, North Petherwin, South Petherwin, St Catherine's, St Stephen's, Tregadillet, Trekenner, Warbstow, Werrington, Windmill Hill.

**Open day/evening**

Thursday 2 October; evening.

Dates and times for open days and evenings are subject to change and are included here as an indication only. Please check the school's website to confirm.

School type	School number	Age range	Number on roll	PAN Year 7	PAN Year 12	SIF?	Criteria on page
-------------	---------------	-----------	----------------	------------	-------------	------	------------------

### Newton Abbot College

Academy	5404	11-18	1046	150	30	Yes	30
---------	------	-------	------	-----	----	-----	----

**Principal** Mr Paul Cornish

[www.nacollege.devon.sch.uk](http://www.nacollege.devon.sch.uk)

**Telephone** 01626 367335

Old Exeter Road, Newton Abbot TQ12 2NF

**Last year**

PAN was 150, increased to 180 and 168 places were offered. This included 18 children in the "other children" category.

**Linked schools**

Abbotskerswell, All Saints (Marsh), Bearnas, Bradley Barton, Canada Hill, Decoy, Denbury, Haytor View, Highweek, Ipplepen, Kingskerswell, St Joseph's, Wolborough.

**Open day/evening**

Thursday 11 and Friday 12 September; morning.  
Wednesday 10 September; evening.

Free transport is provided by the LA on designated school grounds for qualifying addresses in the designated areas for Decoy, Haytor View, Kingskerswell and Wolborough only. This is in addition to statutory entitlement to free transport.

### Okehampton College

Foundation	4183	11-18	1318	240	30	No	21
------------	------	-------	------	-----	----	----	----

**Principal** Mr Daryll Chapman

[www.okehamptoncollege.devon.sch.uk](http://www.okehamptoncollege.devon.sch.uk)

**Telephone** 01837 650910

Mill Road, Okehampton EX20 1PW

**Last year**

PAN was 240 and 236 places were offered.

**Linked schools**

Boasley Cross, Bridestowe, Chagford, Exbourne, Halwill, Hatherleigh, Lew Trenchard, Lydford, North Tawton, Northlew and Ashbury, Okehampton, South Tawton.

**Open day/evening**

Thursday 25 September; daytime and evening.  
Friday 26 September; morning.

### The Park Community School, Barnstaple

Foundation	4059	11-16	1311	300	-	No	21
------------	------	-------	------	-----	---	----	----

**Headteacher** Mr David Atton

[www.parkcommunity.devon.sch.uk](http://www.parkcommunity.devon.sch.uk)

**Telephone** 01271 373131

Park Lane, Barnstaple EX32 9AX

**Last year**

PAN was 300 and 232 places were offered.

**Linked schools**

Ashleigh, Bishop's Tawton, Forches Cross, Holywell, Landkey, Newport, Orchard Vale, Our Lady's, Sticklepath.

**Open day/evening**

Monday 22 to Friday 26 September; mornings.  
Thursday 18 September; evening.

## Individual school information

School type	School number	Age range	Number on roll	PAN Year 7	PAN Year 12	SIF?	Criteria on page
-------------	---------------	-----------	----------------	------------	-------------	------	------------------

<b>Pilton Community College, Barnstaple</b>							
Academy	4060	11-16	1261	270	-	No	30

**Principal** Ms Louise Miller-Marshall

[www.piltoncollege.org.uk](http://www.piltoncollege.org.uk)

**Telephone** 01271 374381

Chaddiford Lane, Barnstaple EX31 1RB

**Last year** PAN was 270 and 270 places were offered. This included 79 children in the "other children" category.

**Linked schools** Ashleigh, Bratton Fleming, Fremington, Goodleigh, Our Lady's, Pilton The Bluecoat Junior, Shirwell, Sticklepath, Yeo Valley.

**Open day/evening** Monday 22 September; evening.  
Wednesday 24 to Friday 26 September; morning.

<b>Queen Elizabeth's, Crediton</b>							
Academy	4003	11-18	1400	265*	30	Yes	23

**Principal** Mr Rupert Poole

[www.queenelizabeths.devon.sch.uk](http://www.queenelizabeths.devon.sch.uk)

**Telephone** 01363 773401

Western Road, Crediton EX17 3LU

**Last year** PAN was 265 and 262 places were offered

**Linked schools** Bow, Brampford Speke, Cheriton Bishop, Cheriton Fitzpaine, Coplestone, Hayward's, Landscore, Newton St Cyres, Sandford, Spreyton, Tedburn St Mary, Thorverton, Yeoford.

**Open day/evening** Monday 29 and Tuesday 30 September; daytime on both sites.  
Tuesday 30 September; evening on the lower school site.

\*Queen Elizabeth's offers 5 places for boarding pupils.

Measurements for the assessment of free transport provided by the LA will be to the Upper or Lower School, according to where a child is educated.

<b>Route 39 Academy, Torridge</b>							
Free	4007	11-18	61	100	-	Yes	30

**Headteacher** Mrs Joss Hayes

[www.route39.org.uk](http://www.route39.org.uk)

**Telephone** 01237 431969

Higher Clovelly, Bideford EX39 5SU

**Last year** PAN was 100 and 55 places were offered.

**Linked schools** No linked schools.

**Open day/evening** Please contact the school.



Dates and times for open days and evenings are subject to change and are included here as an indication only. Please check the school's website to confirm.

School type	School number	Age range	Number on roll	PAN Year 7	PAN Year 12	SIF?	Criteria on page
-------------	---------------	-----------	----------------	------------	-------------	------	------------------

### Sidmouth College

Community	4011	11-18	810	150	10	No	21
-----------	------	-------	-----	-----	----	----	----

**Principal** Mr Kenneth Duncan [www.sidmouthcollege.devon.sch.uk](http://www.sidmouthcollege.devon.sch.uk)

**Telephone** 01395 514823 Primley Road, Sidmouth EX10 9LG

**Last year** PAN was 150 and 131 places were offered.

**Linked schools** Branscombe, Newton Poppleford, Sidbury, Sidmouth.

**Open day/evening** Thursday 2 October; daytime and evening.

### South Dartmoor Community College, Ashburton

Academy	4108	11-18	1609	280	25	No	21
---------	------	-------	------	-----	----	----	----

**Principal** Mr Hugh Bellamy [www.southdartmoor.devon.sch.uk](http://www.southdartmoor.devon.sch.uk)

**Telephone** 01364 652230 Balland Lane, Ashburton TQ13 7EW

**Last year** PAN was 280 and 279 places were offered.

**Linked schools** Ashburton, Blackpool, Bovey Tracey, Buckfastleigh, Ilsington, Moretonhampstead, St Catherine's, St Mary's, Widecombe in the Moor.

**Open day/evening** Tuesday 30 September to Thursday 2 October; morning (schools will be sent invitations). Monday 6 October; evening.

### South Molton Community College

Foundation	4057	11-16	551	120	-	No	21
------------	------	-------	-----	-----	---	----	----

**Principal** Mr Andrew Finney [www.smcc.devon.sch.uk](http://www.smcc.devon.sch.uk)

**Telephone** 01769 572129 Old Alswear Road, South Molton EX36 4LA

**Last year** PAN was 120 and 114 places were offered.

**Linked schools** Bishops Nympton, Brayford, Chittlehampton, East Anstey, Filleigh, North Molton, South Molton United Junior, Swimbridge, Umberleigh.

**Open day/evening** Thursday 25 September; daytime and evening.

## Individual school information

School type	School number	Age range	Number on roll	PAN Year 7	PAN Year 12	SIF?	Criteria on page
-------------	---------------	-----------	----------------	------------	-------------	------	------------------

### St James School, Exeter

Foundation	4016	11-16	657	196	-	Yes	23
------------	------	-------	-----	-----	---	-----	----

**Headteacher** Ms Moira Marder [www.st-james.devon.sch.uk](http://www.st-james.devon.sch.uk)

**Telephone** 01392 209922 Summer Lane, Exeter EX4 8NN

**Last year** PAN was 196 and 171 places were offered.

**Linked schools** Exwick Heights, St David's, St Sidwells, Stoke Hill Junior, Willowbrook.

**Open day/evening** Thursday 18 September; evening.  
Friday 19 September to Friday 3 October; morning.  
Phone to book a tour.

### St Luke's Science and Sports College, Exeter

Voluntary Controlled	4501	11-16	952	196*	-	Yes	31
----------------------	------	-------	-----	------	---	-----	----

**Acting Principal** Mr Dave Holt [www.st-lukes.devon.sch.uk](http://www.st-lukes.devon.sch.uk)

**Telephone** 01392 204600 Harts Lane, Exeter EX1 3RD

**Last year** PAN was 196 and 167 places were offered

**Linked schools** Ladysmith Junior, Pinhoe, St Michael's, Whipton Barton Junior.

**Open day/evening** Wednesday 17 September; morning and evening.  
Monday 22 September; morning.

\*10% of admissions are for children who can demonstrate sporting aptitude.

### St Peter's Church of England Aided School, Exeter

Voluntary Aided	4607	11-16	1236	250*	-	Yes	31
-----------------	------	-------	------	------	---	-----	----

**Headteacher** Mrs Rachel Hutchinson [www.st-peters-exeter.devon.sch.uk](http://www.st-peters-exeter.devon.sch.uk)

**Telephone** 01392 204764 Quarry Lane, Exeter EX2 5AP

**Last year** PAN was 250 and 250 places were offered. Two appeals were refused.

**Linked schools** No linked schools.

**Open day/evening** Tuesday 23 September; morning and evening.

\*Within this PAN, there are 115 Foundation, 55 Other Christian Church, 15 Other Faith and 65 open places.

Dates and times for open days and evenings are subject to change and are included here as an indication only. Please check the school's website to confirm.

School type	School number	Age range	Number on roll	PAN Year 7	PAN Year 12	SIF?	Criteria on page
-------------	---------------	-----------	----------------	------------	-------------	------	------------------

### Steiner Academy, Exeter

Free	4002	3-16	26	26	-	Yes	32
------	------	------	----	----	---	-----	----

**Principal** Mr Alan Swindell

[www.steineracademyexeter.org.uk](http://www.steineracademyexeter.org.uk)

**Telephone** 01392 757371

Foxhayes, Gloucester Road, Exeter EX4 2EE

**Last year**

PAN was 26 and 26 places were offered. The final offer was for a child in category 4.

**Linked schools**

No linked schools.

**Open day/evening**

Wednesday 17 September and Wednesday 15 October; evening. Open afternoons on first Friday of the month, 12 September and 3 October.

### Tavistock College

Foundation	4182	11-18	1285	210	30	No	21
------------	------	-------	------	-----	----	----	----

**Principal** Mrs Helen Salmon

[www.tavistockcollege.devon.sch.uk](http://www.tavistockcollege.devon.sch.uk)

**Telephone** 01822 614231

Crowndale Road, Tavistock PL19 8DD

**Last year**

PAN was 210 and 194 places were offered.

**Linked schools**

Bere Alston, Bickleigh Down, Gulworthy, Horrabridge, Lady Modiford's, Lamerton, Lifton, Mary Tavy and Brentor, Meavy, Milton Abbot, Princetown, St Andrew's, St Peter's Junior, Tavistock, Whitchurch.

**Open day/evening**

Tuesday 23 and Friday 26 September; morning.  
Thursday 18 September; evening.

### Teign School, Kingsteignton

Academy	5402	11-18	1251	203	23	Yes	23
---------	------	-------	------	-----	----	-----	----

**Head of School** Mr Mark Woodlock

[www.teignacademy.co.uk](http://www.teignacademy.co.uk)

**Telephone** 01626 366969

Chudleigh Road, Kingsteignton TQ12 3JG

**Last year**

PAN was 203 and 168 places were offered.

**Linked schools**

Christow, Chudleigh, Chudleigh Knighton, Doddiscombsleigh, Dunsford, Hennock, Rydon, St Michael's.

**Open day/evening**

Thursday 25 September; evening.  
Tuesday 30 September and Thursday 2 October; morning.

## Individual school information

School type	School number	Age range	Number on roll	PAN Year 7	PAN Year 12	SIF?	Criteria on page
-------------	---------------	-----------	----------------	------------	-------------	------	------------------

<b>Teignmouth Community School, Exeter Road</b>							
Academy	4120	11-18	1062	180	10	Yes	32

**Principal** Dr Tony Gray [www.teignmouth.devon.sch.uk](http://www.teignmouth.devon.sch.uk)

**Telephone** 01626 774091 Exeter Road, Teignmouth TQ14 9HZ

**Last year** PAN was 180 and 176 places were offered.

**Linked schools** Bishopsteignton, Hazeldown, Our Lady & Patrick's, Shaldon, Stokeinteignhead, Teignmouth Community School, Mill Lane\*.

**Open day/evening** Thursday 18 September; evening.

\*there is a higher priority for children at Teignmouth Community School, Mill Lane which forms part of the Teignmouth Learning Trust.

<b>Tiverton High School</b>							
Foundation	4192	11-16	1272	280	-	No	21

**Headteacher** Mr Andrew Lovett [www.tiverton.devon.sch.uk](http://www.tiverton.devon.sch.uk)

**Telephone** 01884 256655 Bolham Road, Tiverton EX16 6SQ

**Last year** PAN was 280 and 257 places were offered.

**Linked schools** Bampton, Bickleigh-on-Exe, Bolham, The Castle, Halberton, Heathcoat, Rackenford, St John's, Tidcombe, Two Moors, Wilcombe.

**Open day/evening** Tuesday 7 October; evening.

<b>Tor Bridge High, Plymouth</b>							
Academy	8794186	11-18		210	20	No	28

**Principal** Mrs Liz Dunstan [www.torbridge.net](http://www.torbridge.net)

**Telephone** 01752 207907 Miller Way, Estover, Plymouth PL6 8UN

**Last year** PAN was 210 and 20 places were offered to Devon residents.

**Linked schools** Bickleigh Down, Leigham, Thornbury, Tor Bridge, Widewell.

**Open day/evening** Friday 26 September; morning.  
Thursday 25 September; evening.

Although this school no longer has a designated area, Devon provides transport on designated school grounds for qualifying addresses in an area around Bickleigh Down Church of England Primary School.

Dates and times for open days and evenings are subject to change and are included here as an indication only. Please check the school's website to confirm.

School type	School number	Age range	Number on roll	PAN Year 7	PAN Year 12	SIF?	Criteria on page
-------------	---------------	-----------	----------------	------------	-------------	------	------------------

### Uffculme School

Academy	5405	11-16	968	200	-	Yes	32
---------	------	-------	-----	-----	---	-----	----

**Headteacher** Mrs Lorraine Heath

[www.uffculmeschool.net](http://www.uffculmeschool.net)

**Telephone** 01884 840458

Chapel Hill, Uffculme, Cullompton EX15 3AG

**Last year**

PAN was 200 and 201 places were offered. This included 43 children in the "other children" category. Of 10 appeals, 8 were refused, 1 conceded and 1 allowed.

**Linked schools**

Burlescombe, Culmstock, Hemyock, Kentisbeare, Sampford Peverell, Uffculme\*, Uplowman, Webber's.

**Open day/evening**

Thursday 2 October; evening.

\*there is a higher priority for children at Uffculme Primary School which forms part of the Uffculme multi-academy trust.

### West Exe School, Exeter

Foundation	4014	11-16	1148	260	-	No	21
------------	------	-------	------	-----	---	----	----

**Headteacher** Mrs Vicki Carah

[www.westexetc.devon.sch.uk](http://www.westexetc.devon.sch.uk)

**Telephone** 01392 660100

Hatherleigh Road, Exeter EX2 9JU

**Last year**

PAN was 260 and 205 places were offered.

**Linked schools**

Alphington, Bowhill, Ide, Montgomery, Redhills, St Thomas.

**Open day/evening**

Monday 22 September; evening.

### The Woodroffe School, Lyme Regis

Foundation	5401	11-18		168*	30	Yes	33
------------	------	-------	--	------	----	-----	----

**Headteacher** Dr Richard Steward

[www.woodroffe.dorset.sch.uk](http://www.woodroffe.dorset.sch.uk)

**Telephone** 01297 442232

Uplyme Road, Lyme Regis, Dorset DT7 3LX

**Last year**

PAN was 168 and 91 places were offered to Devon residents.

**Linked schools**

Charmouth, Marshwood, Mrs Ethelston's, St Mary's, St Michael's.

**Open day/evening**

Please contact the school.

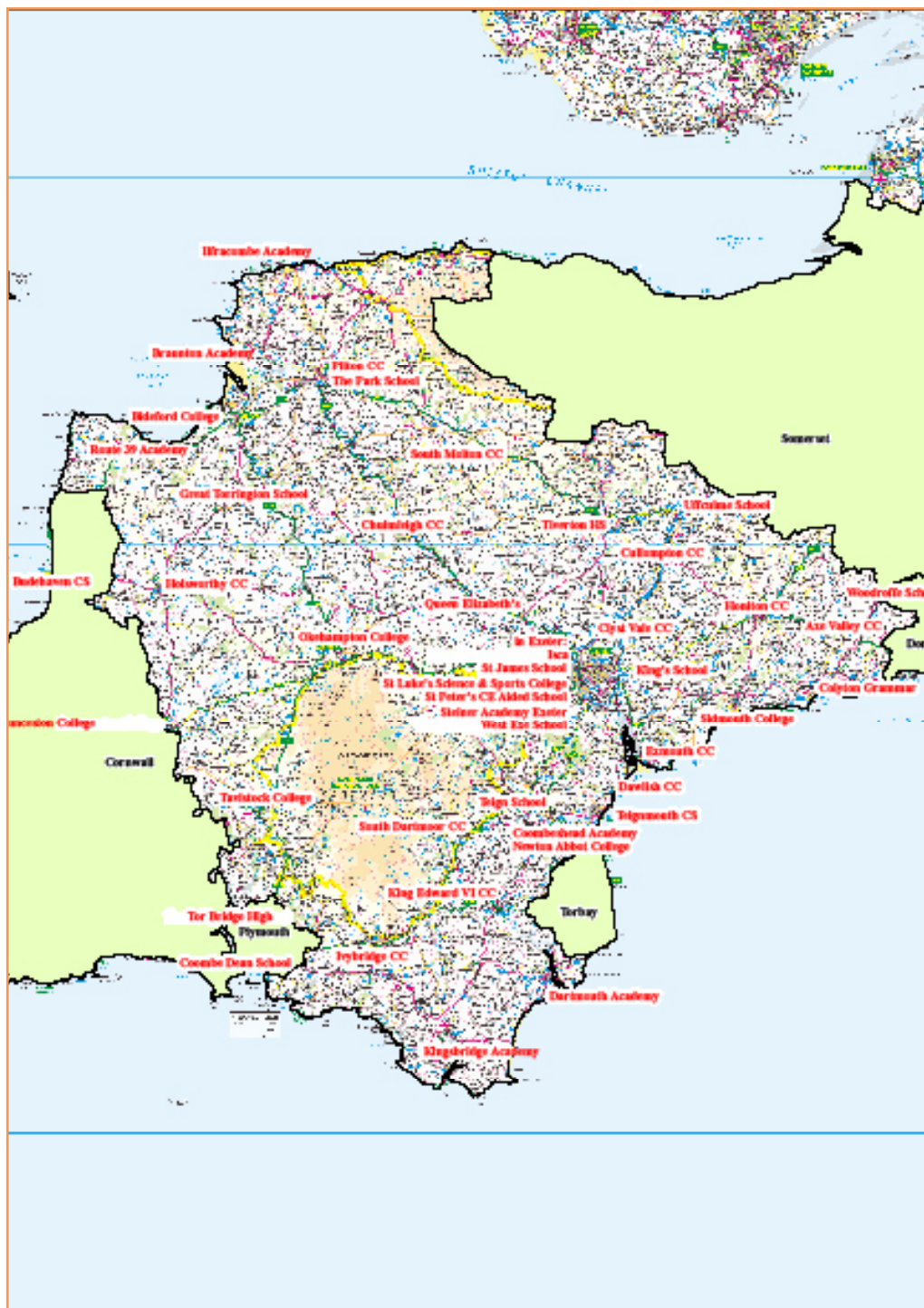
\*10% of admissions are for children who can demonstrate an arts aptitude.

# Timeline

<b>End of August 2014</b>	Unique Identification Numbers sent direct to parents of children in Devon state-funded schools with links to online booklet and online application form.
<b>1 September 2014</b>	Online facility open at <a href="http://www.devon.gov.uk/admissionsonline">www.devon.gov.uk/admissionsonline</a> or Next Step booklets available on request from Education Helpline <b>0345 155 1019</b> .
<b>5 September</b>	Closing date for timely registration forms for selective schools in Plymouth.
<b>12 September</b>	Closing date for timely registration forms for Colyton Grammar School and for selective schools in Torbay.
<b>15 September</b>	Closing date for timely sports aptitude forms for St Luke's Science and Sports College.
<b>20 September</b>	Familiarisation morning for Colyton candidates; Selection testing for Torbay and Plymouth schools.
<b>24 September</b>	Aptitude assessment for St Luke's.
<b>26 September</b>	Parents notified of outcomes of St Luke's assessment.
<b>27 September</b>	Closing date for timely arts aptitude forms for The Woodroffe School; Aptitude assessment for Woodroffe; Selection testing for Torbay and Plymouth schools.
<b>4 October 2014</b>	Selection testing for Colyton.
<b>13 October</b>	Parents notified of outcomes of testing for girls for Plymouth schools.
<b>14 October</b>	Parents notified of outcomes of testing for Colyton.
<b>mid-October</b>	Parents notified of outcomes of Woodroffe assessment.
<b>15 October</b>	Parents notified of outcomes of testing for boys for Plymouth schools.
<b>17 October</b>	Parents notified of outcomes of testing for Torbay schools.
<b>31 October</b>	Closing date for online applications at midnight. Closing date for timely paper Common Application Forms to be submitted. Closing date for timely Supplementary Information Forms to be submitted to the relevant school.
<b>21 November 2014</b>	Details of applications for schools in other LA areas to be sent to those LAs. Details of applications for own admission authority schools in Devon to be sent to those schools.
<b>by 9 January 2015</b>	Devon own admission authority schools to provide the LA with ranked lists of their applicants.
<b>by 9 February 2015</b>	Devon will match the ranked lists of applicants for all schools and allocate places. Devon will inform other LAs of offers to be made to applicants resident in their areas.
<b>9 February</b>	The Devon processing date for applications. No further applications will be included in the first round of allocations.
<b>23 February</b>	Devon will inform schools of the children to be offered places on their behalf.
<b>2 March 2015</b>	<b>National Allocation Day</b> Your child's allocation letter will be posted to you by second class post. You will receive an email confirming your child's allocated school if you applied online.

<b>16 March</b>	Your child's allocation will be deemed to have been accepted by you if you have not informed the school or the LA in writing of alternative arrangements; Date by which parents should request appeal forms.
<b>27 March</b>	Closing date for parents to submit appeals to ensure inclusion in main round of appeals.
<b>6 April 2015</b>	Second round of allocations to be made by the LA. Further allocations will be made as new applications are received and as new vacancies arise.
<b>13 April</b>	Date by which appeal forms should be returned by parents for inclusion in the main body of appeals for Colyton.
<b>May and June 2015</b>	Appeals heard by the Independent Appeals Panel and otherwise for those schools making their own arrangements or those schools located in other LA areas.
<b>1 June 2015</b>	Appeals scheduled for Colyton this week.
<b>July 2014</b>	Induction day at your child's allocated school, as advised by them.
<b>1 September 2015</b>	Date from which requests for school places will be considered under In-Year Admissions arrangements
<b>September</b>	Your child starts in Year 7 on the first day of term for each school.

## Location of secondary schools



The Next Step: transfer to secondary education