

14-19 PERFORMANCE INDICATORS – DCSF/GOSW REVIEW		Sep 2007	Targets (National)	Ratings
1	% of 17 year olds participating in education and work based learning (judged against the 2005/06 national trajectory and progress made since 2004/05) <a href="http://www.dfes.gov.uk/rsgateway/DB/SFR/s000645/index.shtml">http://www.dfes.gov.uk/rsgateway/DB/SFR/s000645/index.shtml</a>	76.1%	90% 2014	Sep 07 G May 07 A/R Sep 06 A/R
2	Reduce the proportion of 16-18 year olds who are NEET (based on where people live) <a href="http://www.dfes.gov.uk/14-19/index.cfm?sid=40&amp;pid=327&amp;lid=299&amp;ctype=Text&amp;ptype=Single">http://www.dfes.gov.uk/14-19/index.cfm?sid=40&amp;pid=327&amp;lid=299&amp;ctype=Text&amp;ptype=Single</a>	6.1% 1.7% increase	6% 2010	Sep 07 R May 07 R Sep 06 A/R
3	Increase in the % of pupils getting 5+ A*-Cs at GCSE or equivalent (including GCSE English and Mathematics) <a href="http://www.dfes.gov.uk/rsgateway/DB/SFR/s000702/index.shtml">http://www.dfes.gov.uk/rsgateway/DB/SFR/s000702/index.shtml</a>	45.9%	50%+ 2010	Sep 07 G May 07 A/G
4	% of young people achieving L2 by 19 (based on where people were studying at age 15) <a href="http://www.lsc.gov.uk/providers/Data/statistics/learner/Level2and3attainmentbyyoungpeople-Localsummary.htm">http://www.lsc.gov.uk/providers/Data/statistics/learner/Level2and3attainmentbyyoungpeople-Localsummary.htm</a>	70.9%	85% 2013	Sep 07 A/G May 07 G Sep 06 A/G
5	% of young people achieving L3 by 19 (based on where people were studying at age 15) <a href="http://www.lsc.gov.uk/providers/Data/statistics/learner/Level2and3attainmentbyyoungpeople-Localsummary.htm">http://www.lsc.gov.uk/providers/Data/statistics/learner/Level2and3attainmentbyyoungpeople-Localsummary.htm</a>	46.4%	56% 2013	Sep 07 A/R May 07 A/G Sep 06 A/G
6	Increase in the % of young people completing an Apprenticeship (based on learner's home postcode) <a href="http://www.lsc.gov.uk/providers/Data/statistics/learner/Level2and3attainmentbyyoungpeople-Localsummary.htm">http://www.lsc.gov.uk/providers/Data/statistics/learner/Level2and3attainmentbyyoungpeople-Localsummary.htm</a>	0.7% increase	0.5% pa	Sep 07 A/G May 07 G Sep 06 A/G
7	The proportion of Y11 learners who progress through the qualifications framework (i.e. L1, L2 and L3) by the age of 19	Expected 2008		
G – Green		A/G – Amber/Green		R – Red
8	Does the area have effective collaborative arrangements in place? – Well formed strategic/leadership groups with co-ordinators in support from LA – Area groups working on transport, timetabling, funding flows, admin, learner welfare and shared resources – Collaboration around curriculum level in place for vocational areas in different degrees across areas. – Need to develop shared QA strategies – Area support infrastructure in place from all 14-19 partners	Sep 07 A/G	May 07 A/G Sep 06 A/G	
9	Development of a local prospectus, and is there good quality IAG to support young people in their choices? – Prospectus launched and available to all development work ongoing. – E-ILP under development and pilot started – will allow greater data transfer – Links made to improve engagement of employers in informing IAG strategy – Commonality linked to IAG protocols and procedures under development – led by recently appointed consultant – More development around challenging young peoples aspirations required	Sep 07 A/G	May 07 A/R Sep 06 A/R	
10	Are there effective links with employers to involve them in sufficient high quality delivery – Employer group established to work on common approach and menu of activities – Partnerships working on sharing links and developing menu of activities with linked champions – Effective links between FE and employers to be broadened out across areas especially in proposed delivery areas – EBP a major partner in 14-19 strategy – secondment from EBP to work on targeted diploma approach and placements – Jobs with training and increased young apprenticeship opportunities for young people are areas for improvement	Sep 07 A/R	May 07 A/R	
11	Capacity to improve 5 A* to C at GCSE or equivalent (including English and Maths) – SIP procedures well established and monitoring and support in place – KS4 results indicate improvement in 5 GCSE A*-C to 57.5% (up 3%) and continues a steady rise. – Support packages are agreed with schools and Action plans drawn up with data driven success criteria – Tracking takes place and support provided for identified schools through advisers and strategy consultants – Need to improve the progress made by specific black and minority ethnic pupil groups	Sep 07 A/G		
12	Is there a sufficiently broad range of quality 14-19 provision, including vocational options? – Are prospectus gives curriculum offer and delivery map – Partnerships have access to provision data – links to gaps and duplication issues. – Quality assurance systems across different sectors need to be shared to inform area planning and evaluation – Issues linked to demand, employer and economic needs should be evaluated across area not at institutional level – Work to be developed on ensuring all learners following suitable courses	Sep 07 A/R	May 07 A/R Sep 06 A/R	
13	Effective targeted provision for those young people who are disengaged or at risk of disengagement? – Good foundation from which to build on further tackling NEET issues – sustainability of project work is an issue – Partnership groups need to consider how to address NEET issues and take ownership of NEET targets – Work on data analysis and tracking to be broadened – partnerships agree to set up systems – Transition work will benefit from greater use of data evidence base being developed – E-ILP will share data across sectors – Accessibility and achievement (post 16 level 2 especially) key issues	Sep 07 A/R	May 07 A/R Sep 06 A/R	
14	Are there sufficient facilities across the area to deliver a broad range of high quality vocational provision? – Facilities improving but from specific capital injection rather than a planned approach. – Area partnerships starting to develop approaches to assess capacity to meet demands for applied/vocational learning. – Acknowledged require to enrich work with employers through Partnership activity. – Capital funding arrangements from all sectors need alignment with 14-19 policy. – Little evidence of shared facilities outside of 14-16	Sep 07 A/R	May 07 A/R Sep 06 A/R	
15	Is the workforce across the area prepared to deliver a broad range of high quality provision? – Initial work on workforce analysis begun in East area supported by LSN project – Analysis of workforce number and mix needs to be undertaken in each area – partnership audits are planned. – Rurality issues in relation to workforce need to be overcome – Transport strategy for 14-19 acknowledged as need in DCC – Evidence from Inspections show teaching and learning promote completion, achievement and progression – Learning visits should be arranged	Sep 07 A/G	May 07 A/R Sep 06 A/R	



# IMPLEMENTING THE 14-19 STRATEGY



## FOCUS FOR 2007-2008

- The immediate focus for Devon providers right now is:
- the development of a richer, more diverse curriculum
  - the pathways to achieve personalised learning for young people
  - working with partners to maximise opportunities
  - the development of realistic and relevant learning experiences in preparation for employment.

14-19 means more young people achieving an appropriate level 2 in order to build a level 3 workforce. That in turn means a richer and more diverse curriculum which can offer young people more opportunities to achieve.

What is proposed for key stage 3 is of course also relevant – greater flexibility (with the promised 25% of time freed up) and a fundamental shift toward skills from the subject basis of the 1988 National Curriculum. There is also an implicit increase in trust of the teacher's judgement.

This creates a real opportunity, therefore, for schools to build new pathways more closely matched to their students' needs with all the benefits that flow from that.

Diplomas are a part of this, but they are not 14-19 development in themselves. There are clear issues with the diplomas at the present, not least their suitability for lower achievers, their fit with existing qualifications, marketability and the relative dearth of rural models.

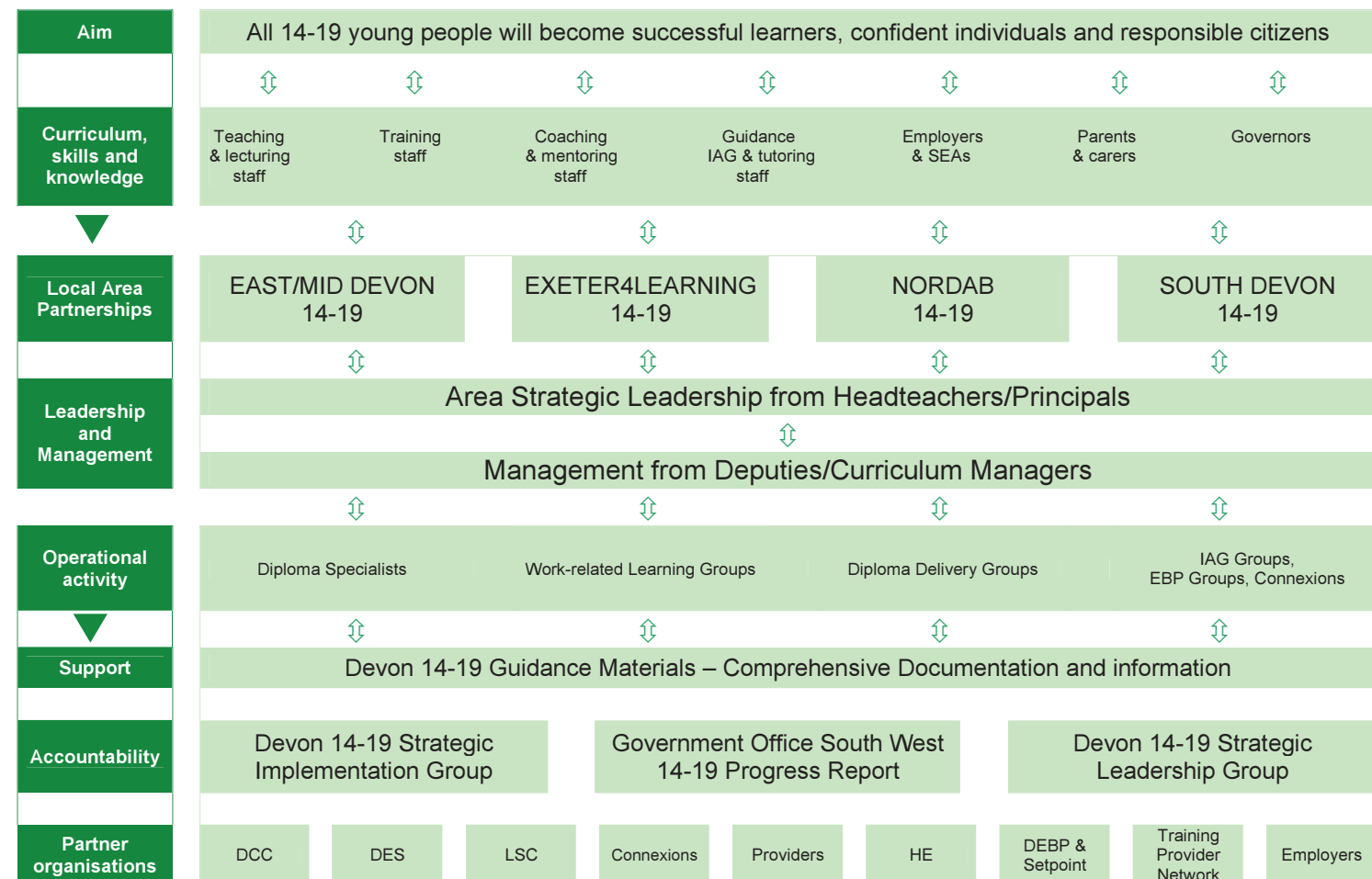
## 14-19 STRATEGIC IMPLEMENTATION GROUP

Mike Young	Devon County Council	Strategic Lead 14-19
Julia Wilkinson	Devon County Council	14-19 Lead
Gilly Browning	Devon Education Services	14-19 Lead
John Davey	Connexions	Devon Area Manager
Geoff Hallett	Devon EBP	Director
Hilary Jones	Devon Education Services	Secondary Advisor
Tony Skeel	LSC, Devon	Economic Development Manager
Glen Crocker	LSC, Devon	Partnership Manager
Martin Robathan	Peninsula Programme	Assistant Manager
Craig Marshall	Training Provider Network	Managing Director

## AREA COORDINATORS

Richard Hussey	East/Mid Devon
Liz Hayes	Exeter
Michelle Nielson	North
Chris Maccullie	South

# 14-19 STRUCTURES IN DEVON



# 14-19 ACTION PLAN 07-08

LSC/LA/CONNEXIONS

Action: What will be done?	Responsibility	Review	Resources	Success Criteria
<b>8 – To establish effective 14-19 Partnerships across the area</b>				
a- build capacity of strategic area groups: develop as self supporting 14-19 Area Partnerships	- Julia Wilkinson/Gilly Browning	- Termly Strategy Group	- Existing	- Self supporting 14-19 Partnerships established in all areas with agreed role and remit - Facilitate Area Partnerships with targeted support and guidance materials
b- maintain leadership role across 14-19	- Mike Young	- Termly Leadership Group	- £30,000 DCSF Infrastructure	- Formal remit established for Leadership Group and 14-19 Partnerships - Proposal to Children's Trust identifying possible alignment to 14-19 structure
c- support and facilitate role of area partnerships through Area Coordinators	- Julia Wilkinson/Gilly Browning	- Termly Strategy Group	- £110,000 (4 areas) DCSF Infrastructure	- Area Coordinators in post - Successful partnership development against guidance material
d- improve engagement of Training Providers within 14-19	- Craig Marshall	- July 08	- £2,000 DCSF Infrastructure	- Involvement of training providers in all 14-19 Area Partnerships - Inclusion in plans for diploma delivery
e- support diploma consortia in planning for future delivery/Gateway applications	- Julia Wilkinson/Area Coordinators	- Termly	- £126,000 Gateway support	- Agreed Action Plan against spend allocated to each partnership (£18,000) by Sep 07 - Partnership development against criteria in above Action Plan
<b>9 – Development of local prospectus and quality IAG</b>				
a- develop reporting functions of Area Prospectus	- Julia Wilkinson	- Termly Strategy Group	- £15,000 DCSF Infrastructure	- All information up to date and prospectus used in all providers - Curriculum mapping of offer against delivery used by each partnership group
b- pilot E-ILP and roll out to all from Feb 08	- Jeremy Cloke	- Jan 08 (pilot) - July 08	- £12,000 DCSF Infrastructure - £ 6,500 GOSW Support	- Pilot across all ages covering movement of learners and special schools - Develop E-ILP to allow dynamic links – accessibility for employers, WBL, parents etc
c- Support local area IAG Groups in developing common strategies	- Jeremy Cloke	- Termly	- Resource to be determined by Area Groups	- Establish 14-19 IAG entitlement across all partners - NEET/Participation targets set by each partnership
d- support schools/colleges in developing and delivering underpinning IAG as entitlement for every young person	- Julia Wilkinson	- Termly	- £30,000 DCSF Infrastructure - £30,000 DES/Connexions	- Employment of 14-19 IAG Advisor with training/support made available for all partners - Diplomas embedded in IAG, Achievement of Investors in Careers by all partners
e- establish a process for projection of Diploma needs	- Tony Skeel/Julia Wilkinson	- Dec 07	- £10,000 DCSF Infrastructure	- Matrix of diploma requirements established and agreed by partnerships - Models used to support effectiveness of 14-19 Area Partnerships
<b>10 – Are there effective links with employers to involve them in sufficient high quality delivery?</b>				
a- improve the engagement of Employers and Sector Skills Councils	- Gilly Browning/Craig Marshall	Termly	- £20,000 DCSF Infrastructure	- Action Plan with employer commitment identifying methods of engaging employers - Menu of activities linking employers to diploma lines and area partnerships
b- secondment through EBP to improve employer links to local partnerships	- Gilly Browning/Geoff Hallett	Termly	- £11,000 GOSW Support	- Linked employer Diploma Ambassadors to each partnership - Action Plans supporting each Partnership for gateway submission
c- organisation of appropriate CPD with targeted employers	- Gilly Browning	Termly	- £ 5,000 GOSW Support	- Professional placements organised for each 14-19 partnership - Employers part of each partnership and linked to each gateway submission
<b>11 – Capacity to improve 5 A* to C% at GCSE or equivalent (inc Maths and English) – see CYPs Raising Achievement Plan <a href="http://www.devon.gov.uk/cyps-raising-achievement-plan.pdf">http://www.devon.gov.uk/cyps-raising-achievement-plan.pdf</a></b>				
<b>12 – Development of broad range of provision and (13) effective targeted provision</b>				
a- Work with area groups to develop 14-16 practical learning	- Area Coordinators	- Termly Strategy Group	- Existing resources	- A comprehensive map of area opportunities across different routes/pathways - Firm offer made to year 9 for opportunities in 08-09 year
b- Maintain KS4 engagement programme in Exeter and expand possibilities across Devon	- Julia Wilkinson (project managed by Trevor Day)	- Termly Strategy Group	- £300,000	- Programme embedded within Exeter offer to young people - Evaluation of participation and achievement of young people on programme
c- Co-ordinate work with vulnerable young people within 14-19 activities including review of Foundation Learning Tier (FLT)	- John Davey - Tony Skeel	- Termly - April 2008	- Existing - £50,000 LSC	- Completion of Transition Plan by Mar 07 to pull together targeted services - Map of scope of FLT and framework to commission new provision
d- develop knowledge of opportunity structure in work related offer through 3 local learning fairs	- Area Co-ordinators	- July 08	- £12,000 Aim Higher - £15,000 L2W ESF/LSC	- Evaluation of each learning fair through pre and post work with young people - Participation of partners: employers, providers, schools, colleges in all 14 Lines
e- Work with providers to provide opportunities for IB	- Mike Young	- July 08	- Existing resources	- Two providers to offer IB - Evaluation of learner progress
<b>14/15 – Developing facilities and workforce to deliver range of provision</b>				
a- dissemination of national 14-19 requirements and developments	- Julia Wilkinson	- Termly Strategy Group	- £9,000 DCSF Infrastructure	- Guidance material/website development and dissemination - 14-19 website & newsletters, DCSF Learning visits
b- Support area groups in development of workforce through Diploma champion(s) and Functional Skills training	- Gilly Browning	- Termly	- £25,000 DCSF Infrastructure	- Champions(s) in place to support relevant gateway submissions - Action research through Functional Skills training with pilot centres
c- Post 16 Conference	- Hilary Jones	- July 08	- £ 5,000 DCSF Infrastructure	- Termly network meetings with Heads of 6 <sup>th</sup> to agree priorities - Annual conference in Summer term